



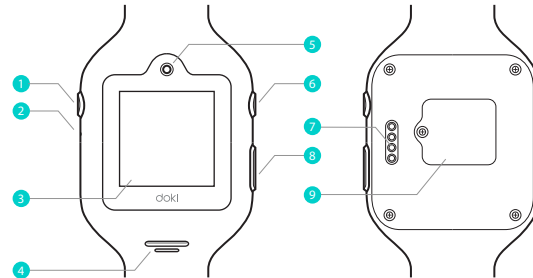
Doki APP

Download APP
Search "Doki"



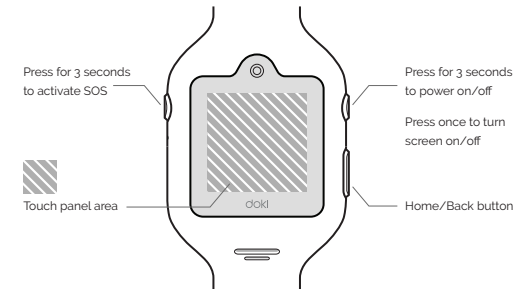
Or download from: www.doki.com

Features



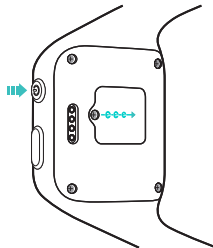
- | | | |
|---------------|-----------------|--------------------|
| 1 SOS button | 4 Speaker | 7 Charging port |
| 2 Microphone | 5 Camera | 8 Home/Back button |
| 3 Touch panel | 6 On/Off button | 9 SIM card cover |

Features



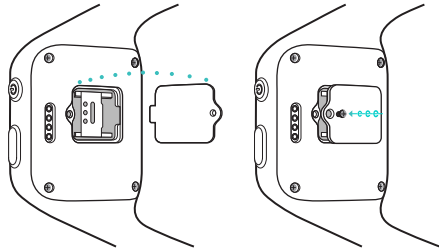
SIM Card Installation

- 1 Power off the device before inserting SIM card
- 2 Use screwdriver to open the SIM card cover



SIM Card Installation

- 3 Slide right to open the metal sleeve
- 4 Place the SIM card into the sleeve
- 5 Slide left to lock the metal sleeve
- 6 Place the SIM card cover back and secure the screw
- 7 Start the device by pressing on/off button for 3 seconds



Warning

- All packing materials such as internal bags, plastic collars, plastic films are not part of this product and should be discarded for your child's safety.
- Do not try to disassemble the unit.
- To charge dokiWatch, only use the USB cable supplied with dokiWatch.
- Keep the device out of direct sunlight and away from any direct heat source.
- Do not submerge into water.
- Keep the device clean by wiping it with a slightly damp cloth.
- If there is any discomfort or irritation during use, please remove device immediately.
- The product and the USB cable should be periodically examined for conditions that may result in the risk of fire, electric shock, or injury to persons and that, in such an event, the USB cable should not be used until properly repaired.
- CAUTION - ELECTRICAL OPERATED PRODUCT
- As with all electric products, precautions should be observed during handling and use to prevent electric shock. Adult supervision is recommended.
- Please do not wear dokiWatch during thunderstorm to avoid any danger caused by lightning.
- If the device screen is broken, please stop using it. Do not touch or attempt to remove the broken parts, and contact the service centre immediately.
- For all warning and disclaimer, please visit www.doki.com

Caution

1. Risk of explosion if battery is replaced by an incorrect type. Dispose of used batteries according to the instructions.
2. The product shall only be connected to a USB interface of version USB2.0.
3. Adapter shall be installed near the equipment and shall be easily accessible.
4. USB port to charge the watch.
5. The max operating of the EUT is 50 °C and shouldn't be lower than -20 °C ..
6. The plug considered as disconnect device of adapter.
7. The device complies with RF specifications when the device used at 0mm from your limb and 10mm for your mouth
8. Declaration of Conformity

Hereby, Wherecom Technologies Limited declares that this Smart Watch product is in compliance with essential requirements and other relevant provisions of Directive 1999/5/EC.

FCC Caution

§ 15.19 Labelling requirements.

This device complies with part 15 of the FCC Rules. Operation is subject to the condition that this device does not cause harmful interference.

§ 15.21 Information to user.

Any Changes or modifications not expressly approved by the party responsible for compliance could void the user's authority to operate the equipment.

§ 15.105 Information to the user.

Note: This equipment has been tested and found to comply with the limits for a Class B digital device, pursuant to part 15 of the FCC Rules. These limits are designed to provide reasonable protection against harmful interference in a residential installation. This equipment generates uses and can radiate radio frequency energy and, if not installed and used in accordance with the instructions, may cause harmful interference to radio communications. However, there is no guarantee that interference will not occur in a particular installation. If this equipment does cause harmful interference to radio or television reception, which can be determined by turning the equipment off and on, the user is encouraged to try to correct the interference by one or more of the following measures:

- Reorient or relocate the receiving antenna.
- Increase the separation between the equipment and receiver.
- Connect the equipment into an outlet on a circuit different from that to which the receiver is connected.
- Consult the dealer or an experienced radio/TV technician for help.

Specific Absorption Rate (SAR) information:

This Smart Watch meets the government's requirements for exposure to radio waves. The guidelines are based on standards that were developed by independent scientific organizations through periodic and thorough evaluation of scientific studies. The standards include a substantial safety margin designed to assure the safety of all persons regardless of age or health. FCC RF Exposure Information and Statement The SAR limit of FCC is 1.6 W/kg averaged over 1g of tissue for head and 4.0 W/kg (10g) for limb. Device types: dokiWatch has also been tested against this SAR limit. The highest SAR value reported under this standard during product certification for use at the mouth is 0.350 W/Kg(1g) and when properly worn on the limb is 2.353 W/Kg(10g). This device was tested for typical body-worn operations with back side , kept 0mm for limb and 10mm for mouth. To maintain compliance with FCC RF exposure requirements.

Body-worn Operation

This device was tested for typical body-worn operations. To comply with RF exposure requirements, the minimum separation distance of 0mm for limb and 10mm for mouth .