

# Installation Manual of Smart Booster

## 1 . Notice:

- 1) Please note the power voltage range which is written in the product manual. See Page 4 for details.
- 2) We suggest you power the repeater without interval. While if you don't run your car in 15days or more, you'd better power it off lest you cannot start your car after the car power is exhausted.
- 3) Please pay attention that the trailer's connecting line should be connected with the power in quick waterproof coupler's way.
- 4) This product cannot be used unless it is matched with DORAN360SL.

## 2 . Parts of Repeater

### 1) Picture of Repeater



### 2) Picture of Cable tie



## 3 . Installation of Repeater

- 1) Select the proper place\position to install

For 10or 14-wheels truck without head separation, we'd better fix the repeater in the center position which is near its rear wheels and under the truck's chassis transom support. If the support has no screw hole, we have to bore one.

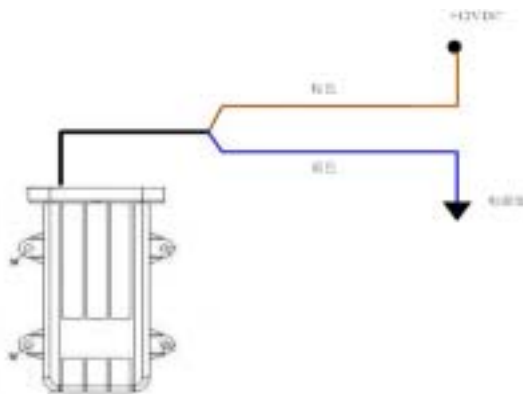
As for trailer truck, we suggest customers to fix a quick-connector for the truck head usually separate with its carriage.

- 2) According to the poles of the electrical wire, connect the right poles of the electrical wire with the power cable. See the connecting line map below for more information.

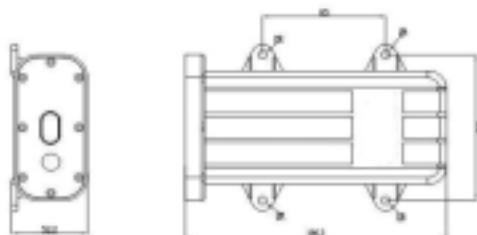
Notice:

If the electrical line is not long enough, please lengthen the wire to the power cable according the poles and color of the power.

#### 4 . Connecting line Map of Repeater



#### 5 . Mechanical Size Map of Repeater



#### FCC Caution

This device complies with Part 15 of the FCC Rules. Operation is subject to the following two conditions:

- (1) this device may not cause harmful interference, and (2) this device must accept any interference received, including interference that may cause undesired operation.

#### FCC Notes:

The manufacturer is not responsible for and radio or TV interference caused by unauthorized modifications to this equipment. Such modifications could void the user's authority to operate the equipment.