

## Table of Contents

<b>Table of Contents</b>	<b>1</b>
<b>1 Wireless Book Description</b>	<b>3</b>
1.1 Outlook Description	3
1.2 Desktop Description	3
<b>2 Battery Charging</b>	<b>4</b>
<b>3 Basic Operation</b>	<b>5</b>
3.1 Power On and Off	5
3.2 Start Applications	5
3.3 Keyboard	6
3.4 Touchpad	7
3.5 How to use SD Card	7
3.6 USB Device	8
3.7 Connecting to the internet	8
<b>4 Application</b>	<b>10</b>
4.1 Internet Explorer	10
4.2 Camera	11
4.3 Office Software	12
4.4 Instant Messenger	12
4.5 Multimedia	13
4.6 Games	17
4.7 Others	17
<b>5 System Setting</b>	<b>19</b>
5.1 Time Setting	19
5.2 Display	19
5.3 Input Panel	20
5.4 Internet Options	20
5.5 Keyboard	21
5.6 Mouse	21
5.7 Network and Dial-up Connections	22
5.8 Owner	22
5.9 Password Setting	23
5.10 Power	23
5.11 Regional Settings	24
5.12 Remove Programs	24
5.13 Storage Manager	25
5.14 System	25
5.15 Volume and Sounds	26

## FCC Statement:

NOTICE: This device complies with Part 15 of the FCC Rules. Operation is subject to the following two conditions: (1) this device may not cause harmful interference, and (2) this device must accept any interference received, including interference that may cause undesired operation.

Changes or modifications made to this equipment not expressly approved by DORRY ELECTRONICS INTERNATIONAL CO., LTD may void the FCC authorization to operate this equipment.

This equipment has been tested and found to comply with the limits for a Class B digital device, pursuant to Part 15 of the FCC Rules. These limits are designed to provide reasonable protection against harmful interference in a residential installation. This equipment generates, uses and can radiate radio frequency energy and, if not installed and used in accordance with the instructions, may cause harmful interference to radio communications. However, there is no guarantee that interference will not occur in a particular installation. If this equipment does cause harmful interference to radio or television reception, which can be determined by turning the equipment off and on, the user is encouraged to try to correct the interference by one or more of the following measures:

- Reorient or relocate the receiving antenna.
- Increase the separation between the equipment and receiver.
- Connect the equipment into an outlet on a circuit different from that to which the receiver is connected.
- Consult the dealer or an experienced radio/TV technician for help.

Radiofrequency radiation exposure Information:

This equipment complies with FCC radiation exposure limits set forth for an uncontrolled environment. Please see the RF Exposure information. This transmitter must not be co-located or operating in conjunction with any other antenna or transmitter.

## 1 Wireless Book Description

### 1.1 Outlook Description

Front View:



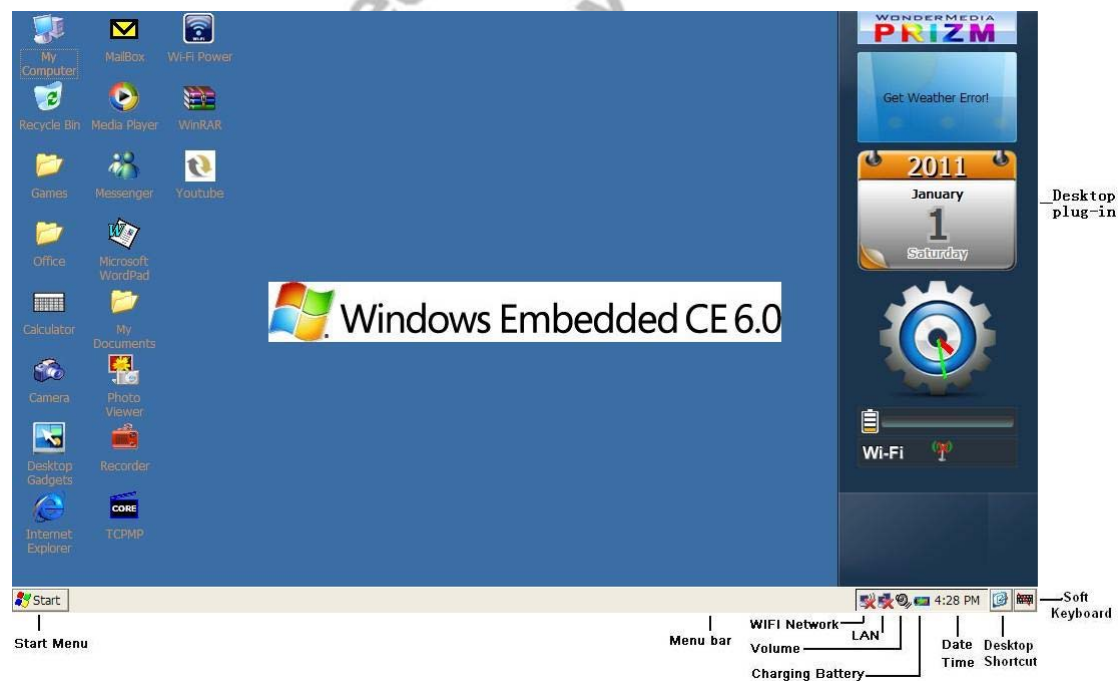
Right side View:



Left side View:



### 1.2 Desktop Description



## 2 Battery Charging

### 1) Power Adapter

Wireless Book has an internal charging battery. We suggest to charge up the battery when the battery power is low.


### 2) Way to Charging Battery

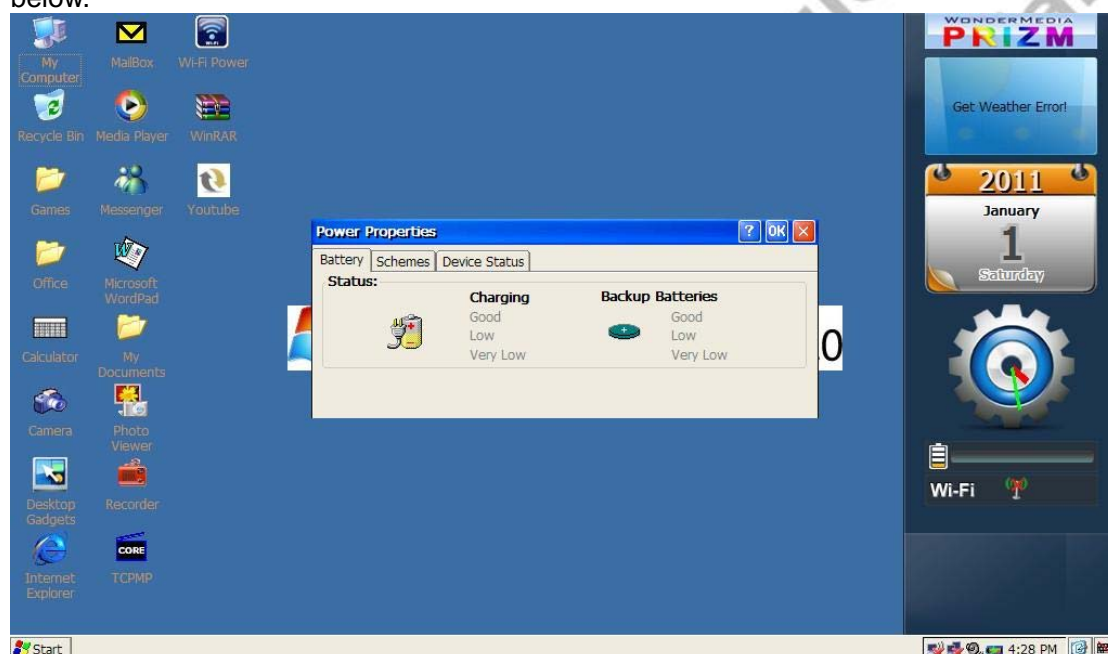
1. Plug in the power adapter, the battery charge indicator turns red, indicating charging. Plug when the battery is fully charged, the indicator shows green. After unplug the power adapter, the indicator always shows green.
2. During Battery Charging, user can operate Wireless Book.

### Note:

The charging time will be longer when operating and charging at same time.

### 3) Checking Battery Level

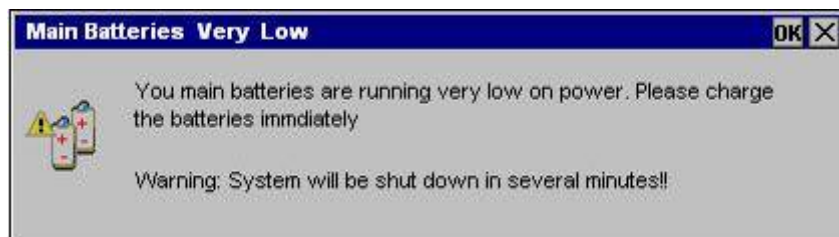
You can double click icon  in menu bar to check the battery level as the window shown below.



You also can check the status by click the "Start" - "Setting" - "Control Panel", then double click "Power" icon to open power properties window.

Status	Description
Good	Good battery level
Low	Low battery level, need to have charging
Very low	Low battery level, must have charging

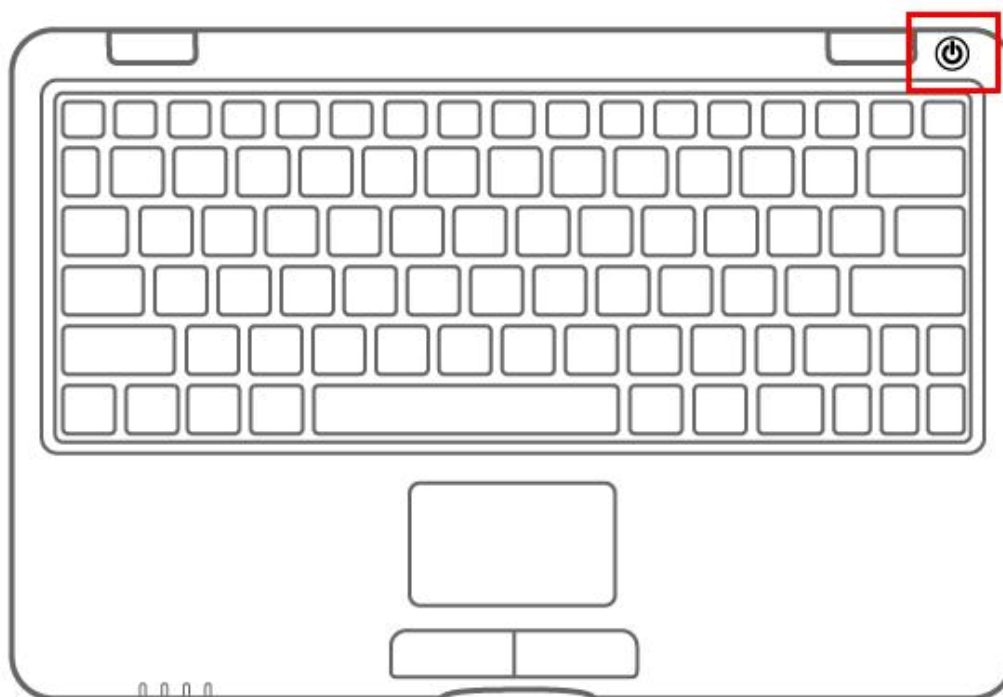
Once battery is in low level condition, the display will show "Main Batteries very low" window as below, Wireless Book will be automatically shutdown in a few minutes.



## 3 Basic Operation

### 3.1 Power On and Off

Power on the machine by pressing the button can power on it.




1. Power On: When power adaptor is plugged, User can press Power button to enter the Window Platform.
2. Power Off:
  - a) User can long press (2 seconds) power button, after popped up a dialog box, and click "Yes" to switch off.
  - b) Power off through "Start" Menu selection.
  - c) User can long press (8 seconds) power button to shutdown the machine.

### 3.2 Start Applications

Applications can be started either by clicking on the icon of the relative application on the desktop, or by clicking the "Start" button and selecting the required program from the "Programs" menu.

#### Note:















Once several applications have been started, the icon  can be used to minimize all the program windows displayed.

It is suggested that not to start too many applications at the same time, or have too many Internet Explorer windows opened together. Otherwise the system may slow down.

### 3.3 Keyboard


Wireless Book was used 80 keys of standard keyboard template.

There are some functions of Key combination

		Page Up
		Home
		Page Down
		End
		F11
		F12
		Scroll Lock

Num keyboard



Users press  to change Num mode and then they can input the corresponding number by Num key. Press it again to get back normal mode.

### 3.4 Touchpad

Touchpad is a mouse device it can be used as a regular mouse. Touch pad buttons on both sides of the left and right mouse buttons and common features with the same.

**Note:**

Do not place heavy objects on the touchpad to avoid being scratched or deformed

### 3.5 How to use SD Card

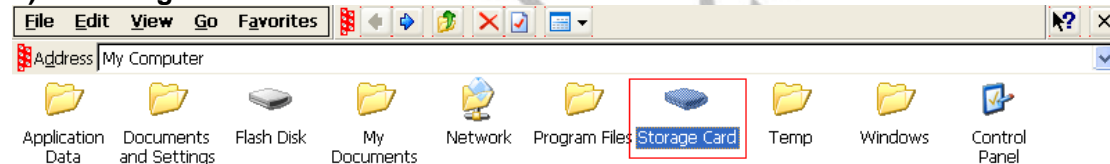
**1) Insert card:**

Insert SD card (Brand name side face down) to the Card slot.



Use finger to put the card into the slot until "click" sound heard.

**2) Browsing files in card:**



Double Click "My Computer" on the desktop.



Double click **Storage Card** to browse Card.

**3) Remove SD card:**

Close all applications or documents which have been opened from the card.

Press the card lightly. It will be ejected partly.  
Pull the card out.

**Note:**

1. Insert card to the right position. Otherwise it will damage the card.
2. Once the card has been locked, it can not be formatted or written.
3. Don't insert and remove the card repeatedly in a short time. It may cause the card damaged.
4. Suggest using major brands of SD card to avoid any incompatibility.

### 3.6 USB Device

Wireless Book have 3 major USB interface, you can connect various USB devices such as USB storage devices, USB keyboard and USB mouse.

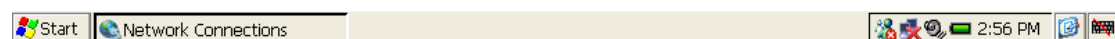
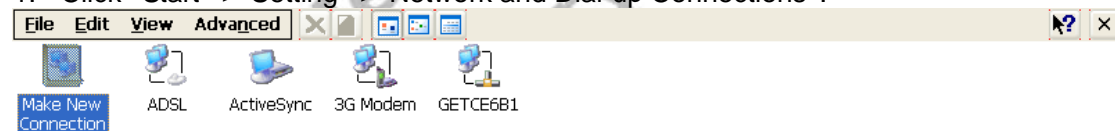
### 3.7 Connecting to the internet

#### Connecting to the internet by Ethernet



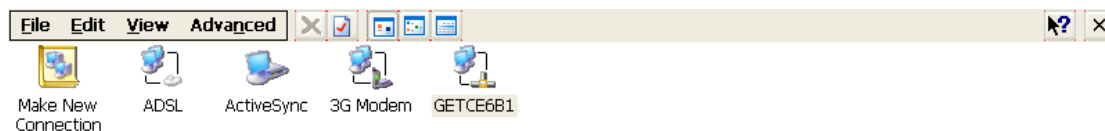
Set up the Ethernet connection:



1. Click "Start"->"Setting"->"Network and Dial-up Connections".



2. Double click "GETCE681".

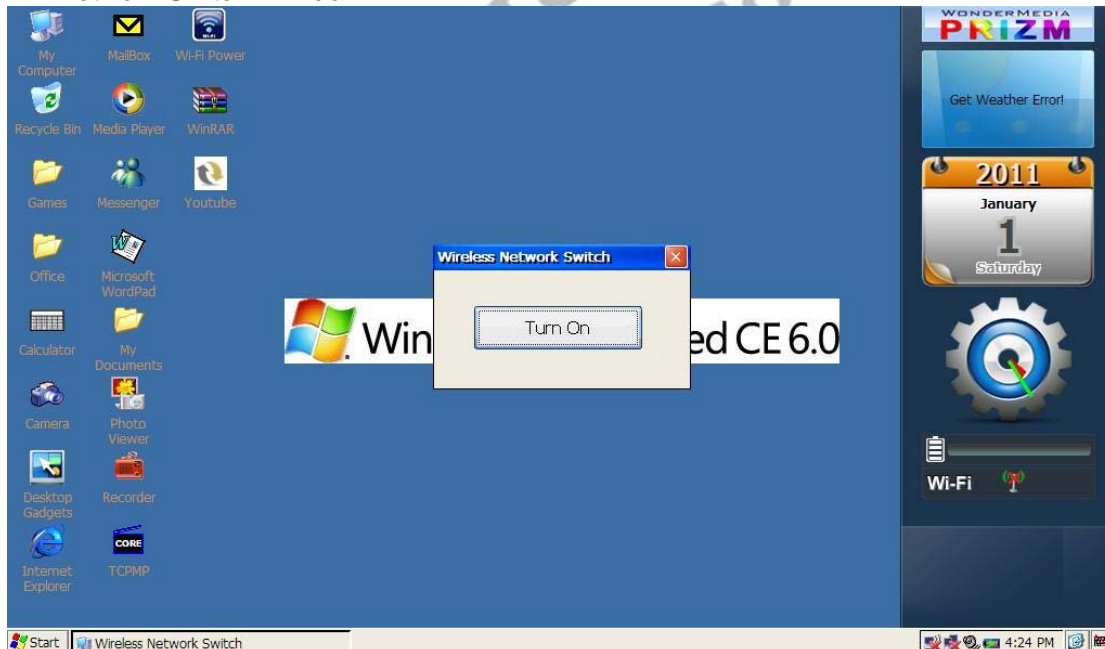




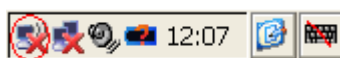
3. Select "Obtain an IP address via DHCP".
4. Click "OK" to save and exit.
5. User can also select "Specify an IP address" to set the address manually.
6. After connected to LAN, icon  in the task tray will be changed to .

### Connecting to the internet by Wi-Fi

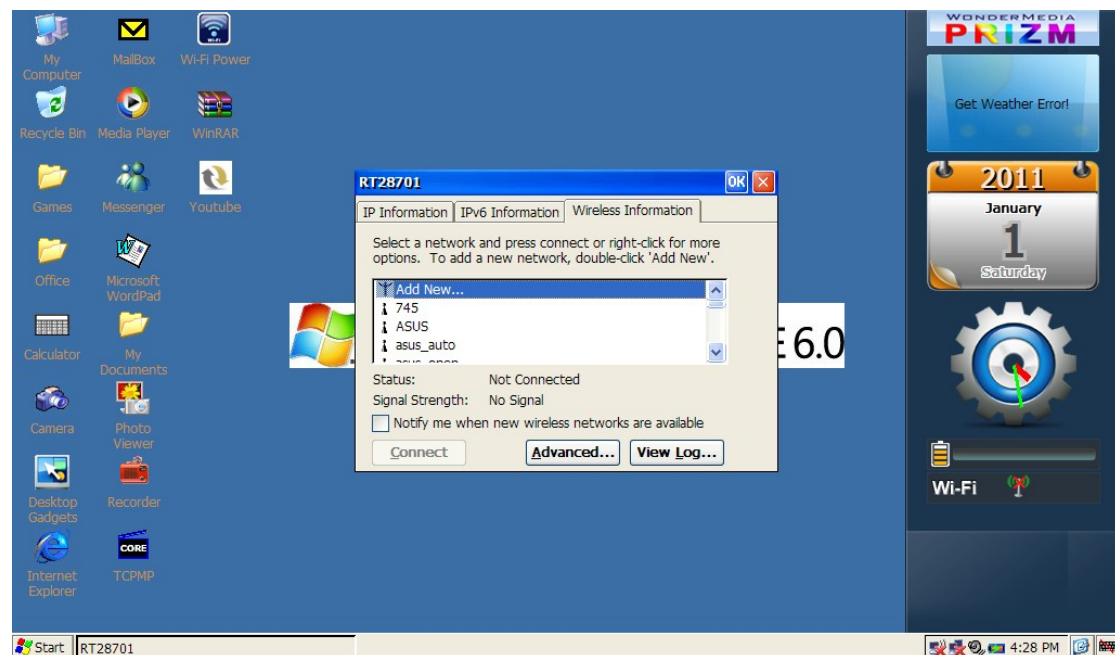
1. Double click "WIFI Power" in the desktop, and then click "Turn On" in the "Wireless Network Switch" window.



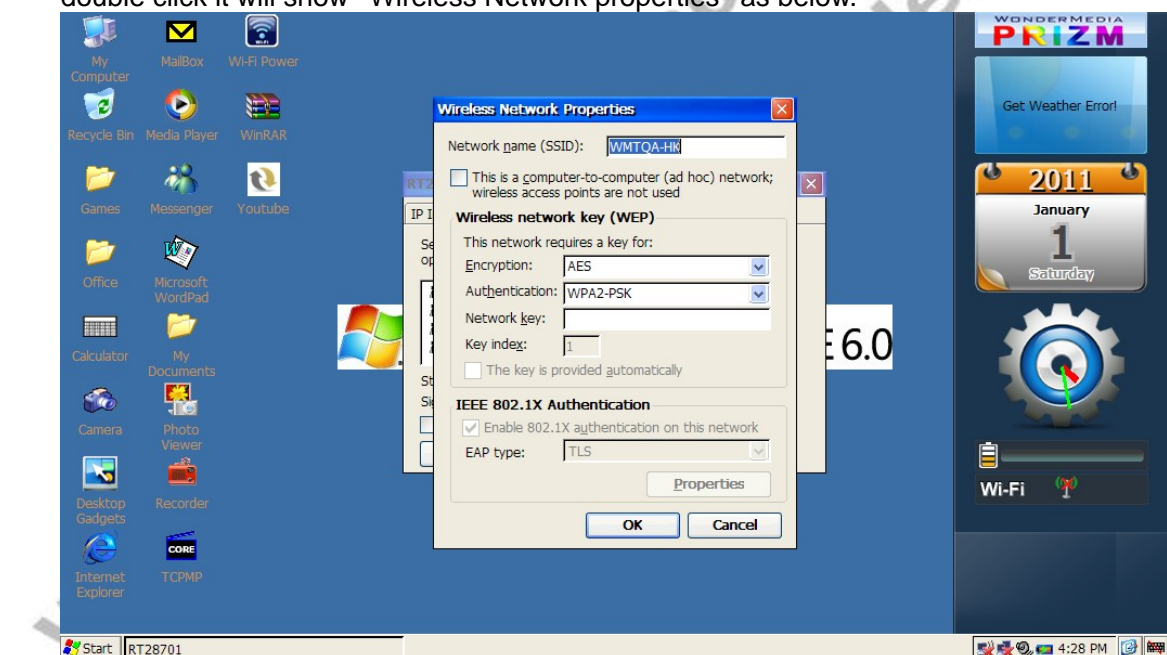
2. The icon of Wi-Fi connection (circled in red on this photo) is turned up in the menu bar of Wireless Book.



3. Make a double click with the left button next to your touchpad.
4. Click on the tab "Wireless Network Information".
5. All the name of your modem / internet box will be listed in the frame.



6. Select the name of your modem.
7. If network doesn't have password, you can click "Connect" to start the connection. If the security encryption is enabled on the wireless network you are connecting to, double click it will show "Wireless Network properties" as below.




8. Input the Password in "Network Key" box with soft keyboard.
9. After confirmed by clicking "OK", it will go back to "RT28701" interface. Click "Connect" to start connecting.
10. If the connection is successful, the menu bar icon will change from Disconnect to Connect.

## 4 Application

### 4.1 Internet Explorer

You can make use of IE to obtain information from internet web, music download, etc.

1. Click  on desktop to open Web Browser.

2. Enter web address  for the website you wish to browse.

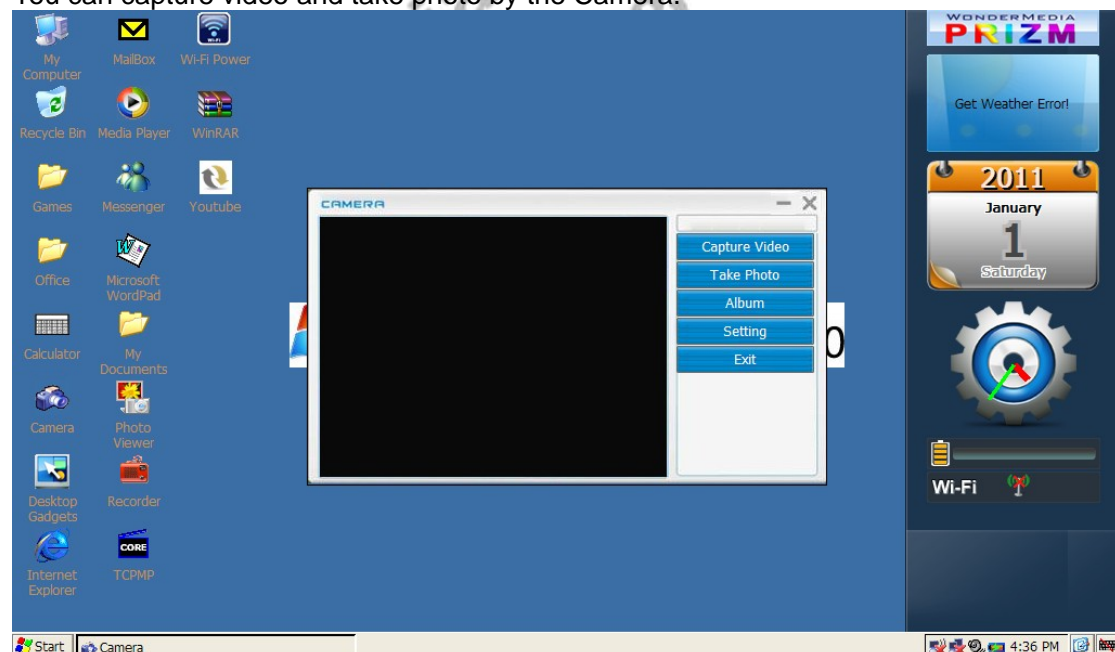


3. Select File -> Directly click  can close the Web Browsing window.

4. Select File -> "Save page..." can save up web page to Flash Disk directory.

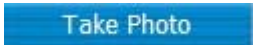




## 4.2 Camera

You can capture video and take photo by the Camera.



1. Check  on desktop to open Camera.

2. Check  to capture video.

3. Check  to take photo.
4. Check  to enter the directory which saving video and photo.
5. Check  to change the directory which saving video and photo.
6. If you want to exit the software , check  or .

### 4.3 Office Software

Wireless Book includes many word processors. They can process PDF, Word, Excel, PPT and many other document formats.

#### 1) Word Processor

WordPad and Text Maker are two of simple word processor, which consists of simple word editing function. They can process many word format such as \*.pwd, \*.rtf, \*.txt, \*.pwt, \*.doc, \*.dot.

Double click the icon to run.

#### 2) Spread Sheet

Excel and Plan Maker are two types of spread sheet processors. They can perform \*.xls file view and editing function.

Double click the icon to run.

#### 3) Text Reader

Wireless Book contains document reader such as Presentations and Foxit Reader, and support most common office document.

Presentations can open document in PPT or PPS format, and perform zoom in / out function.

Foxit Reader can read PDF format file.

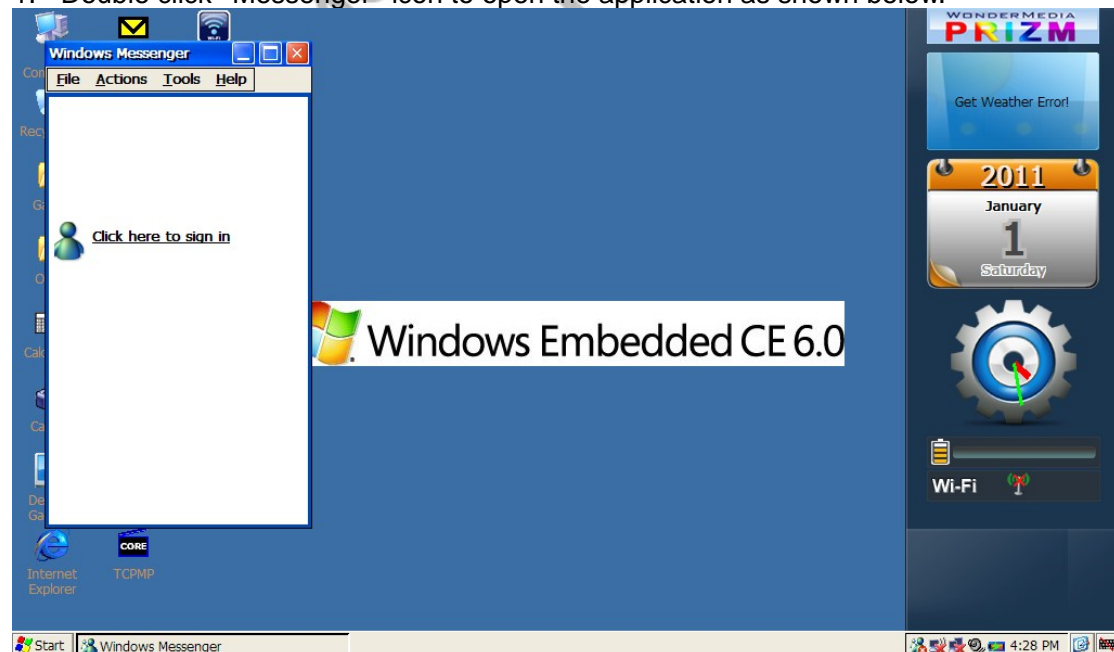
Double click the icon to run.

### 4.4 Instant Messenger

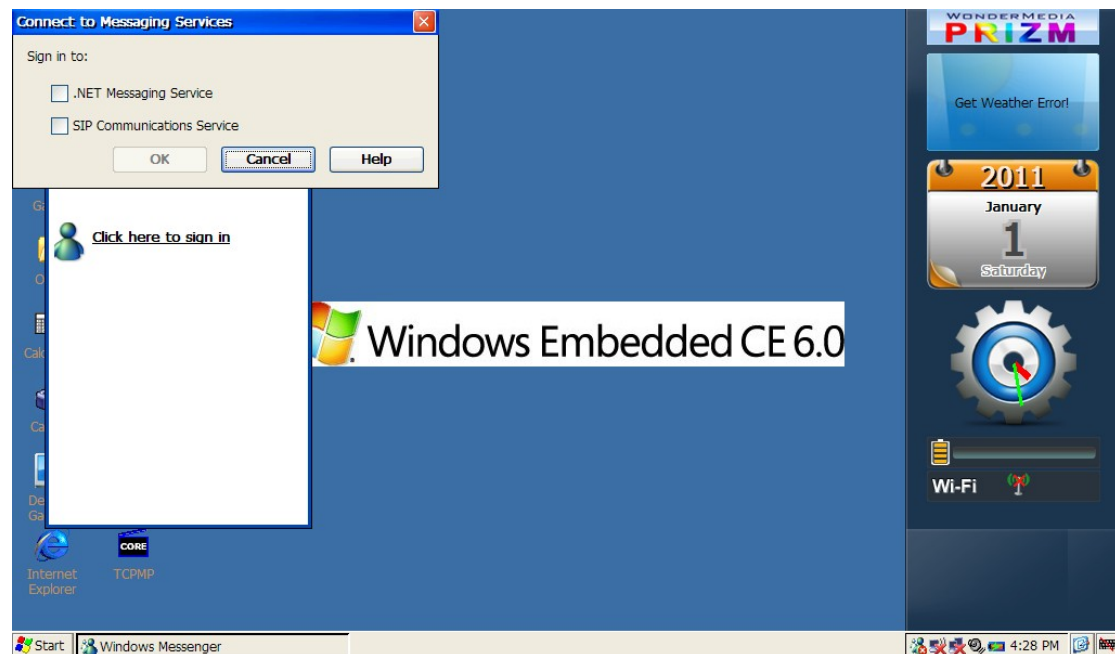
Wireless Book have a kinds of communication tools –Internet Messenger. We can use it chatting all over the world.

#### 1) Internet Messenger

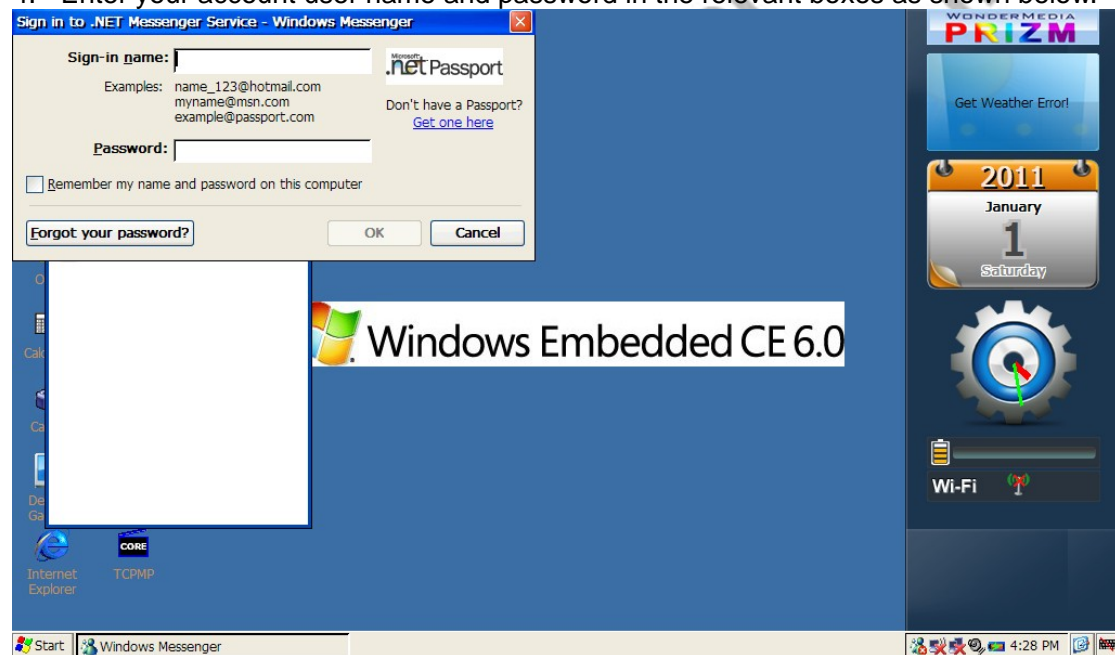
1. Double click “Messenger” icon to open the application as shown below.



2. Click “Click here to sign in” as shown below.



3. Select the ".NET Messaging Service", and then click OK.
4. Enter your account user name and password in the relevant boxes as shown below.



5. You can contact with your friends after login is successful.

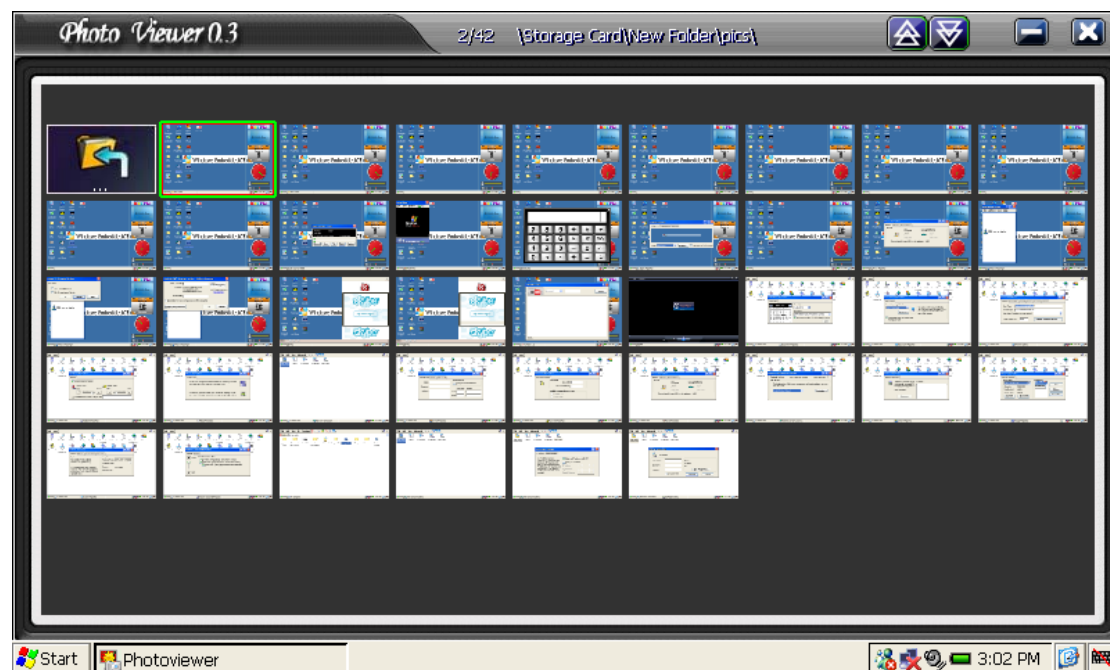
## 4.5 Multimedia

### 1) Photo Viewer

Photo Viewer is a kind of picture view tools, it have browsing, zooming and simple picture editing function.

Double click "Photo Viewer" icon and it will open as shown below. Select the folder in the top of the window, the image files in this folder will be shown as thumbnails mode in the bottom of the window.

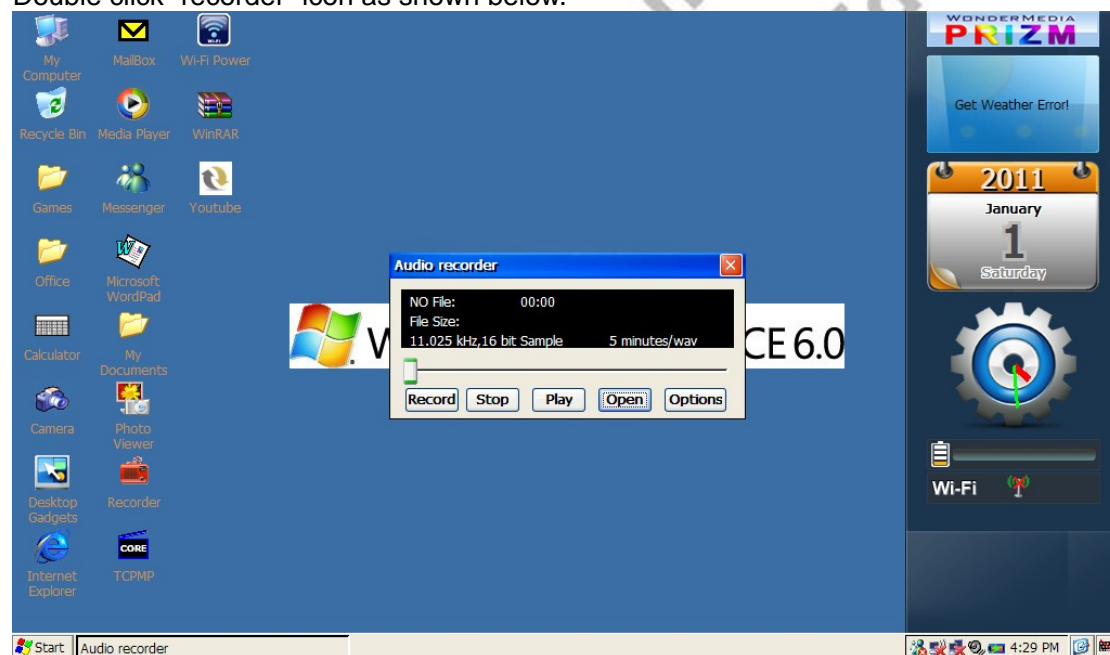




Double clicking the thumbnail, you can see the picture full screen. Through the "View" and the "Tools" menu can do some simple operations.

## 2) Sound Record

Double click "recorder" icon as shown below.



Click "Record" icon, save the recorded file in Flash Disk, then it will change to record status. Use the microphone On-board or an external microphone to record. Click "Stop" to stop recording, "Play" to play recorded file, "Open" to open the recorded file saved in Wireless Book. Each audio file is limited to 5 minutes.

## 3) Multimedia Player--TCPMP

TCPMP support player music and video in different file format, such as mp3, wma of audio, AVI, mp4 of video. It supports videos of 320×240, 500kbps.

Double click "Player" icon to open the media player as shown below.

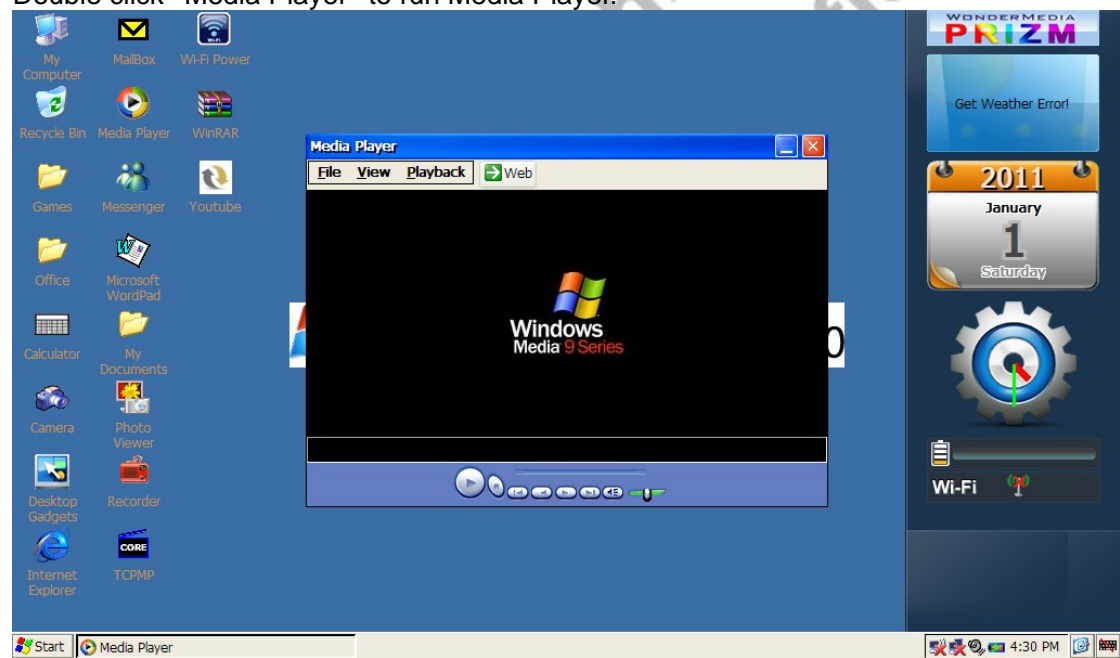


Select "File" -> "Open file..." -> selected file or double click the selected file can open the file.

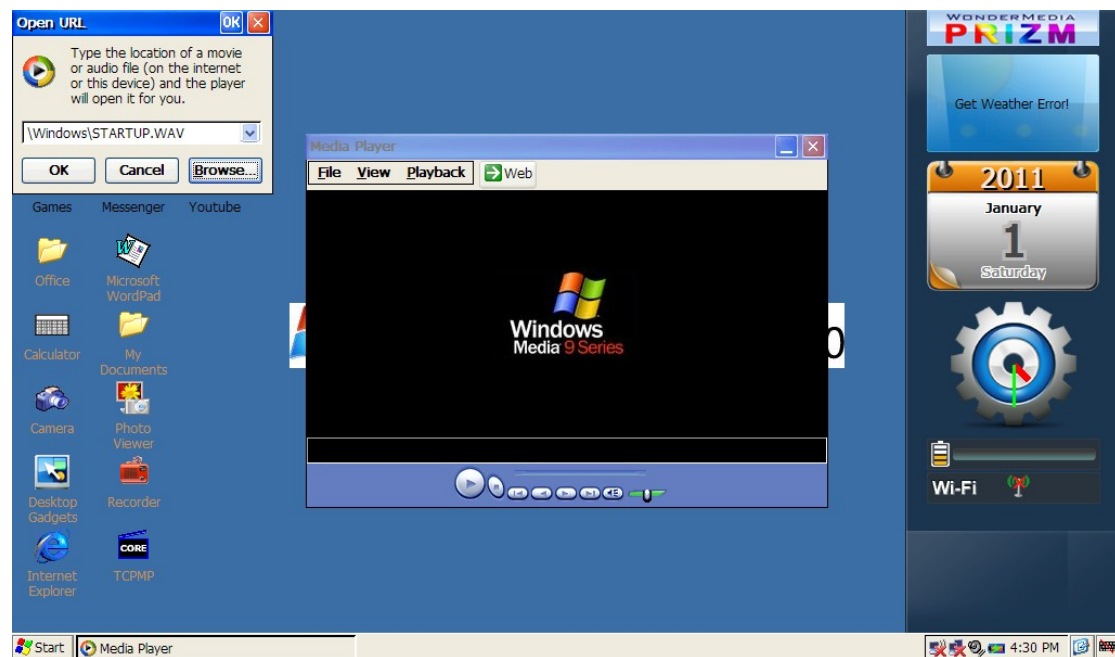
Click the Play/Pause, Stop, Previous, Next, Volume icon can do related operation.

#### 4) Multimedia Player--Media Player

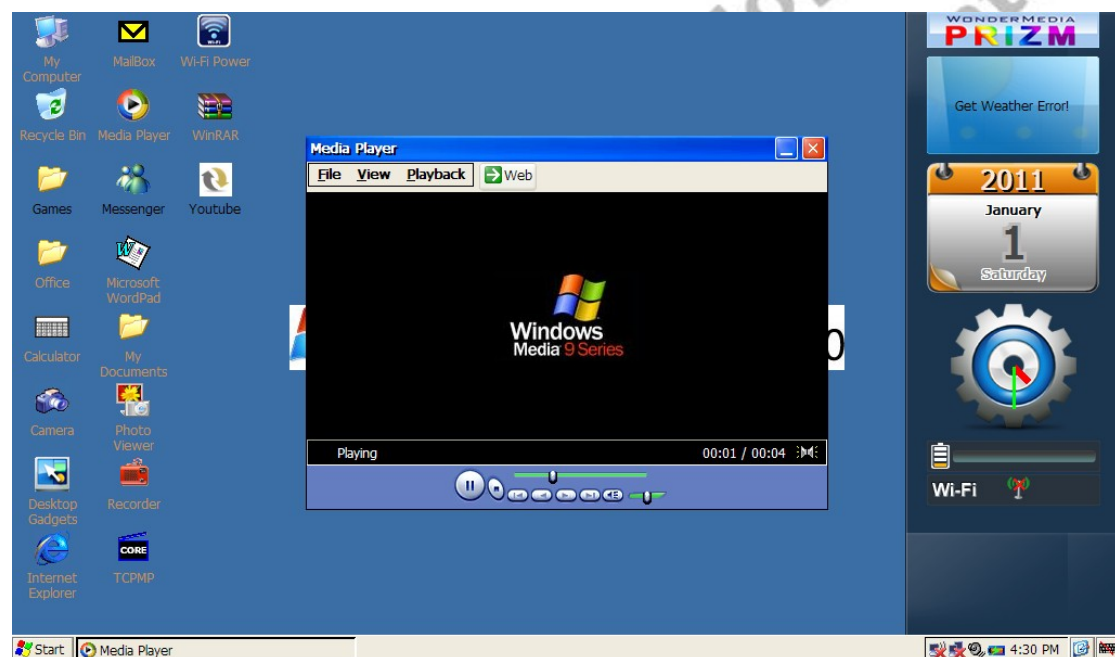
Double click "Media Player" to run Media Player.



Click "File"->"Open", click "Browse..." in pop-up window to select file to play. It supports videos of 720×480.



Click "OK", the selected file start to playing.

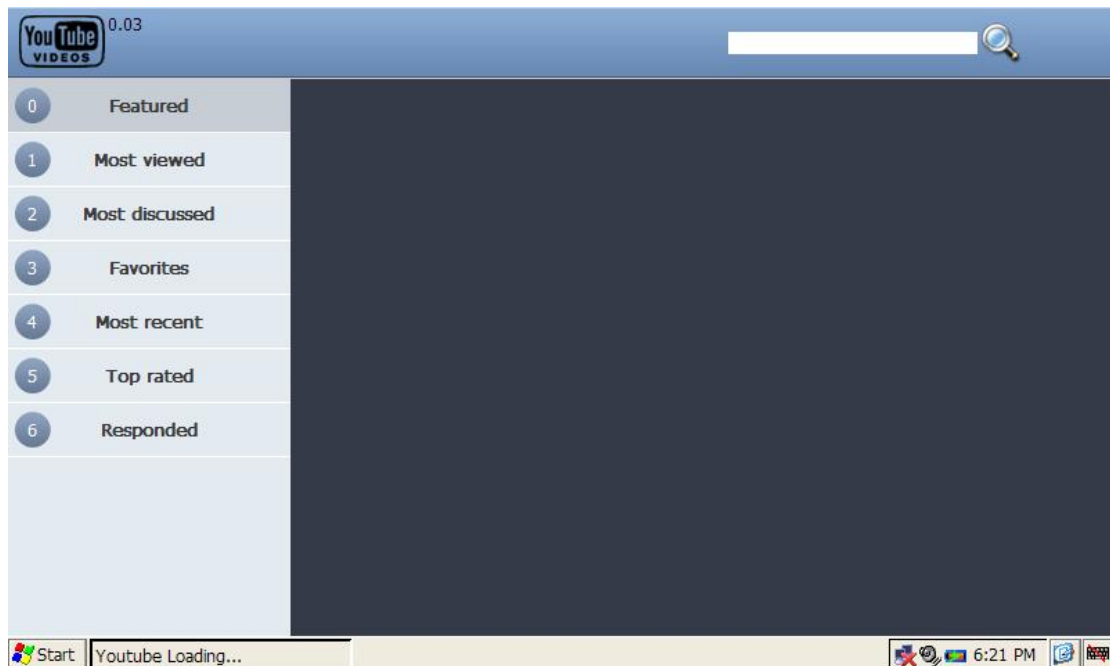


Window is automatically minimized when music playing.

## 5) YouTube

Double click "YouTube" icon. Select "Search" in the left box of window, and input interested contents in the right box, then click "Search" button. After the searching is finished, the relative videos are listed. Double click the vedio to play it.





You can also list the recently featured, most discussed, most viewed and top favorite videos by clicking in the left box, and then select one of them in the drop-down menu.

#### 4.6 Games

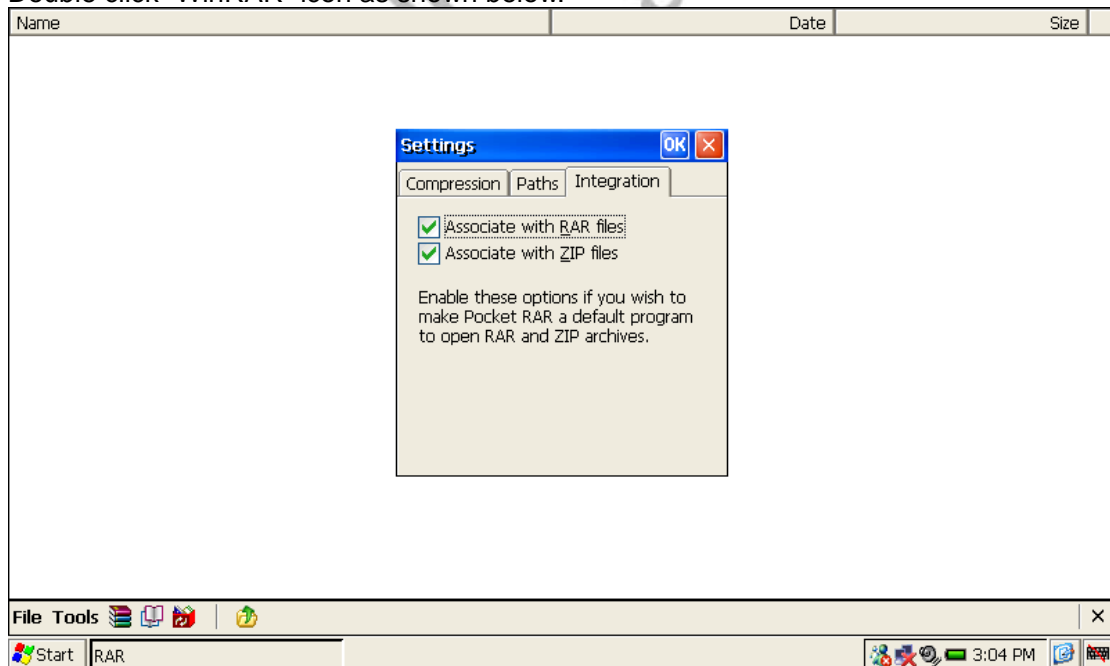
Wireless Book build-in games are: Solitaire, FREECELL and Jawbreaker. Double-click the name of the game will enter game screen to run it.

#### 4.7 Others

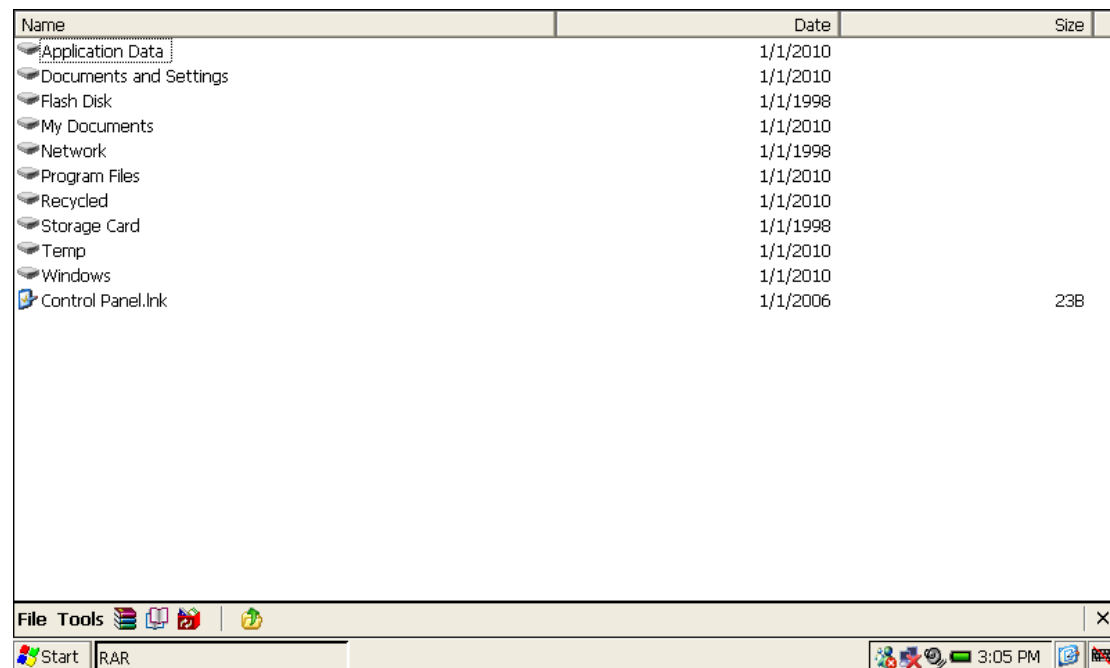
##### 1) File Compression-WinRAR

WinRAR is a program of creating, managing and controlling of compressed and decompressed file. It can support RAR and ZIP format files.

Double click "WinRAR" icon as shown below.



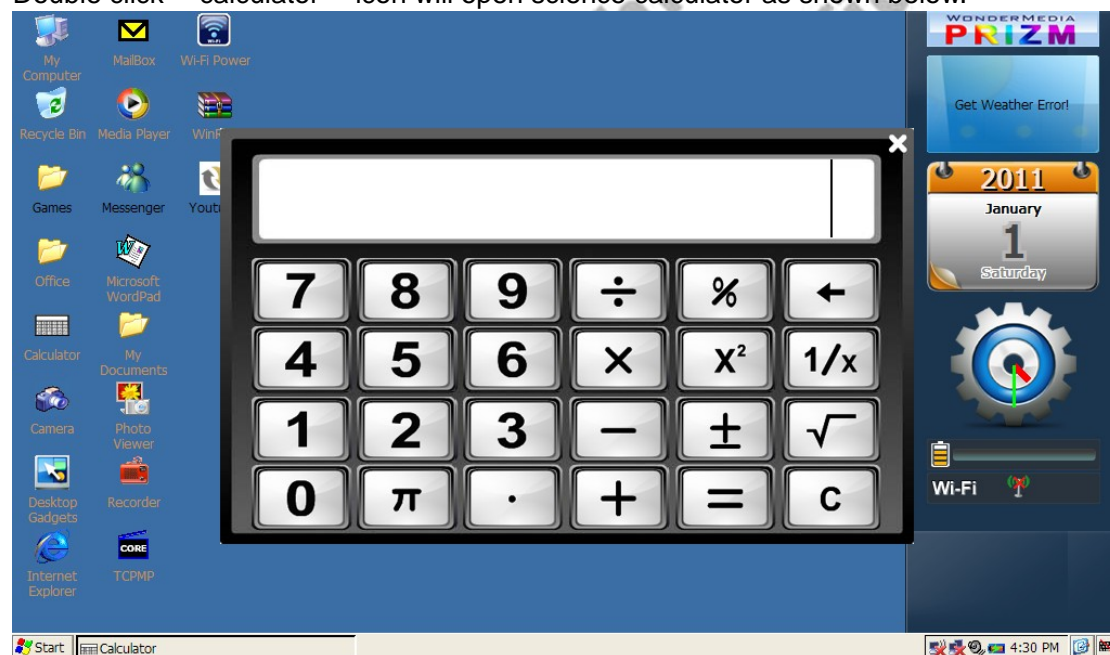
It will pop up "Settings" window when it first running. Select "OK" to view document.



Select file, then press “WinRAR” icon in the menu to compress the file. Select the compressed package file can browse the contents inside. Double click the file in compressed package can be extract and view directly.

## 2) Calculator

Double click “calculator” icon will open science calculator as shown below.



Operation is the same as the scientific calculator.

## 3) Desktop Gadgets

Double click “Desktop Gadgets” icon will open science calculator as shown below.



You can choose Clock, Calendar, Whether, Info and LOGO to display the icon on the desktop. Click the icon to select or cancel the desktop display. Select or cancel “AUTO RUN” can choose whether display the Desktop Gadgets with power on.

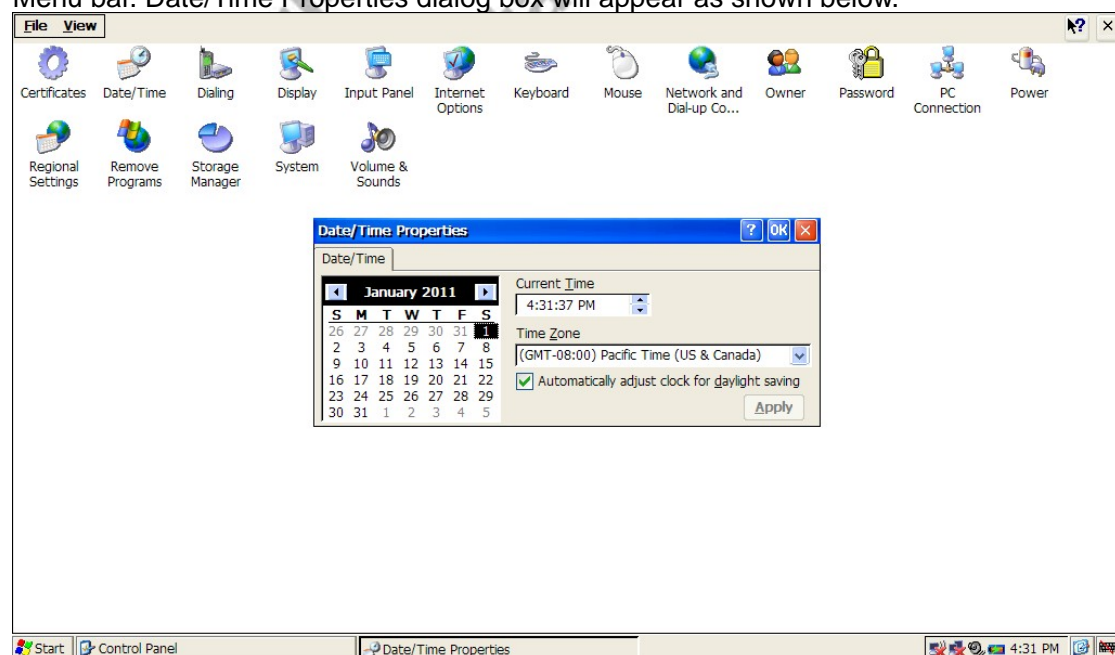
## 5 System Setting

Systems setting allow you to manage many systems settings like system clock, date, sound, power etc.

Settings are described below.

### 5.1 Time Setting

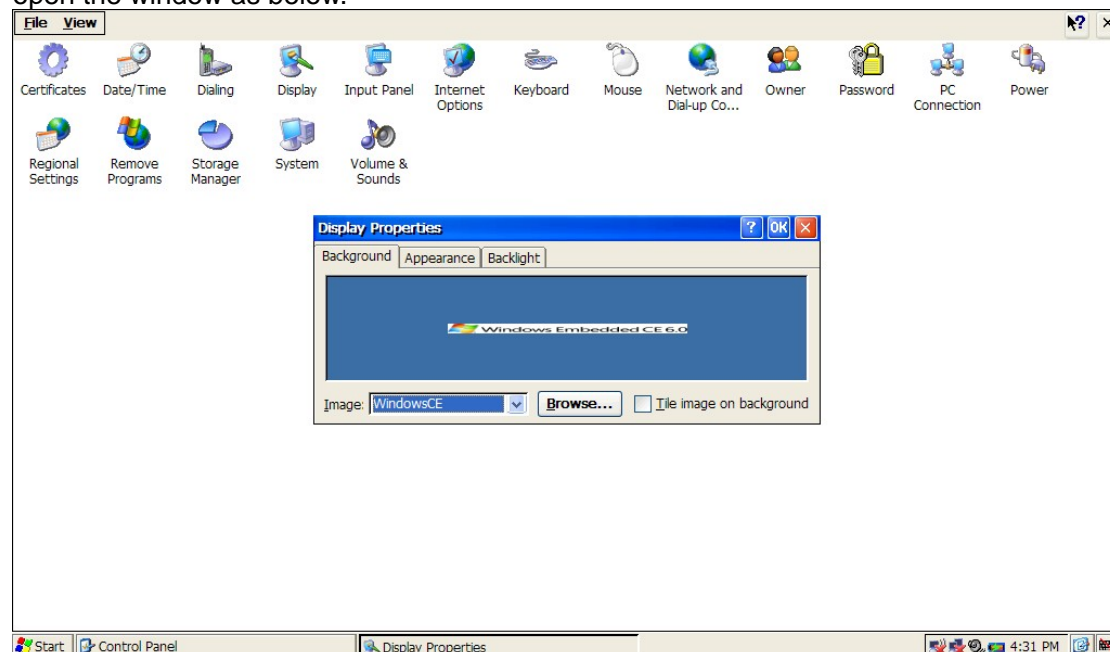
To modify Date, Time, and Regional time zone information, double clicks the time zone in Menu bar. Date/Time Properties dialog box will appear as shown below.



### 5.2 Display

To change the wallpaper background, default appearance and backlight settings, move the pointer on desktop background and press the right button, the "Display Properties" window will appear as shown below.

Click "Start" -> click "Setting"->click "Control Panel", then double click "Display" can also open the window as below.

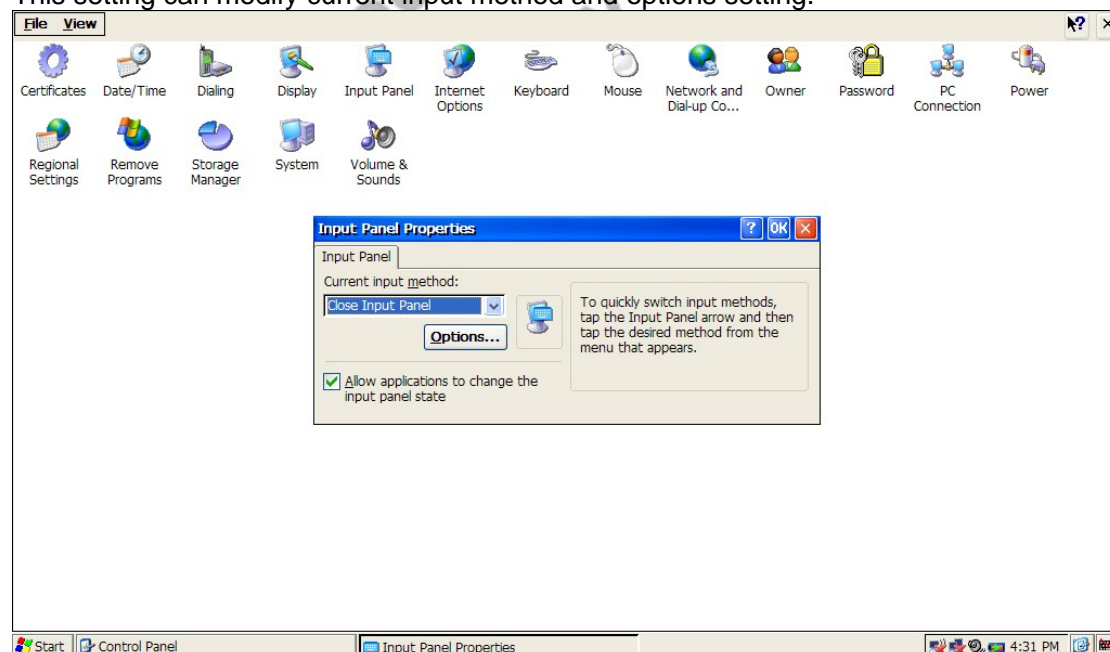


User can change the background wallpaper by selecting a different image from the pull down image list or by clicking the "Browse" button and select an image file to use. Appearance and backlight level can also be set from the relevant tabs within the Display Properties window.

Please be noted that wallpaper picture should be stored in "Flash Disk" for the setting.

### 5.3 Input Panel

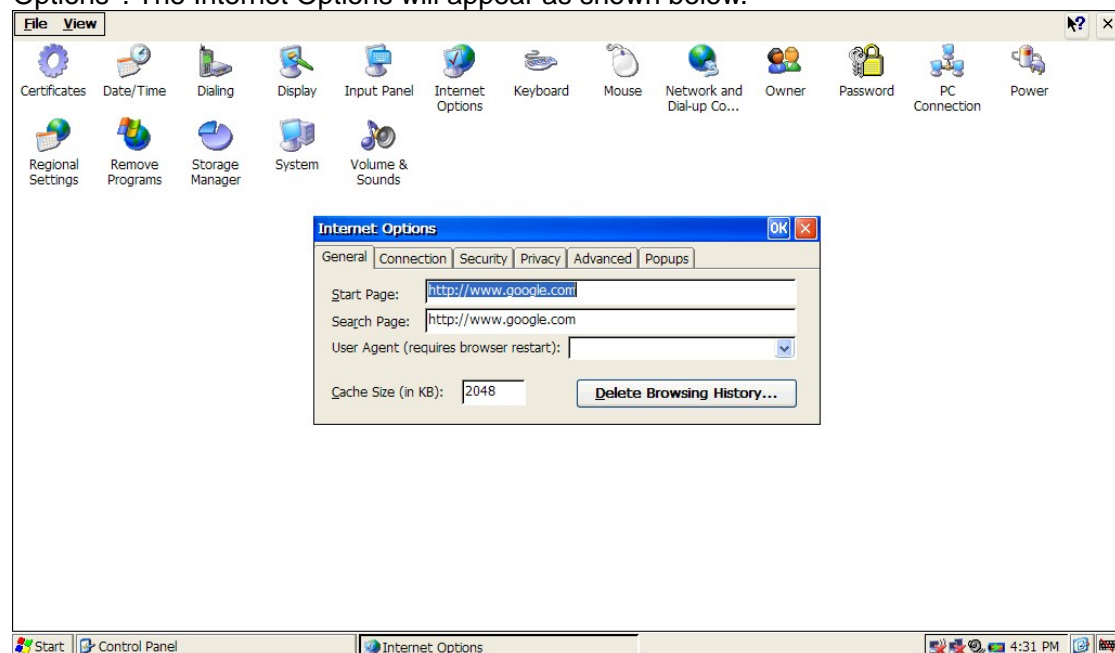
Click "Start" -> click "Setting"->click "Control Panel", then double click "Input Panel" icon. This setting can modify current input method and options setting.



### 5.4 Internet Options

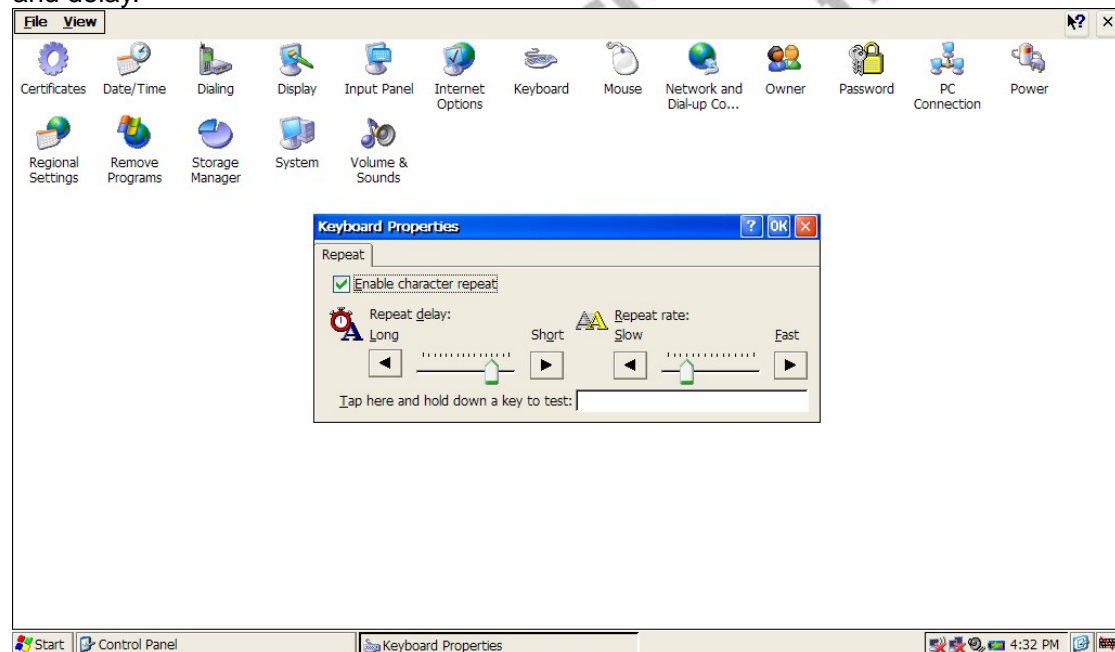
All the options for Internet Explorer can be managed within Internet Options, including the default Start Page, Search Page, Security and Privacy settings as well as popup blocking.

Click "Start" -> click "Setting"->click "Control Panel", and then double click "Internet Options". The Internet Options will appear as shown below.



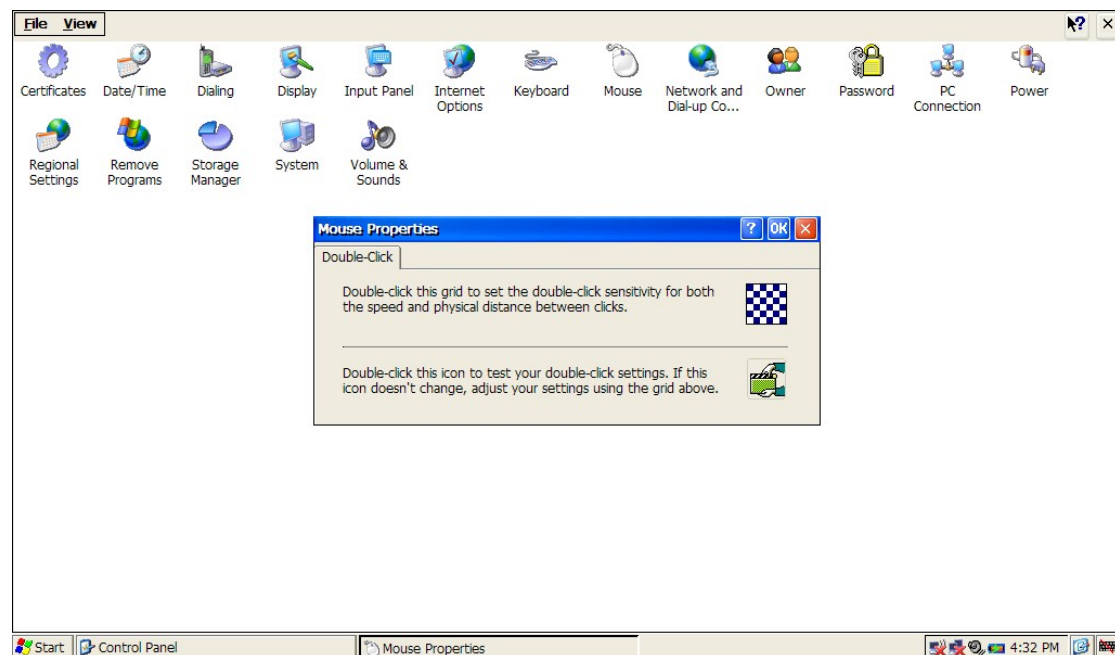
## 5.5 Keyboard

Click "Start" -> click "Setting"->click "Control Panel", and then double click "Keyboard", the Keyboard Properties window as below. This setting can change Keyboard repeat rate and delay.



## 5.6 Mouse

Click "Start" -> click "Setting"->click "Control Panel", then double click "Mouse", the Mouse Option window will be shown as below. This setting can change the mouse Double-click sensitivity.



## 5.7 Network and Dial-up Connections

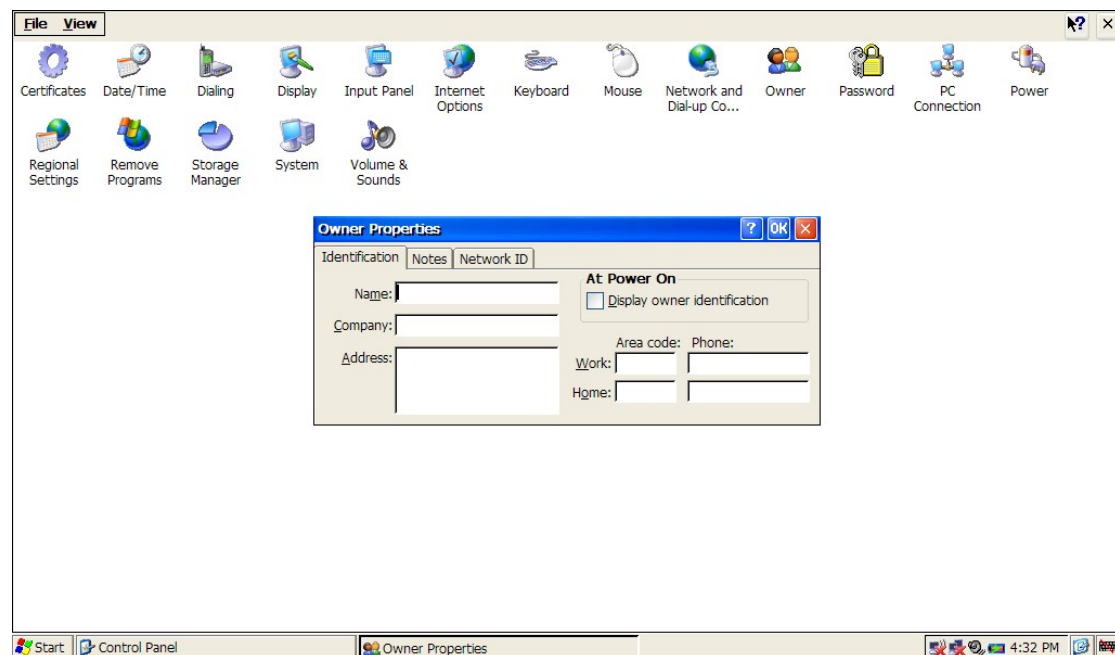
Click "Start" -> click "Setting"->click "Control Panel", then double click "Network and Dial-up Connections", the Network and Dial-up Connections window will be shown as below.



## 5.8 Owner

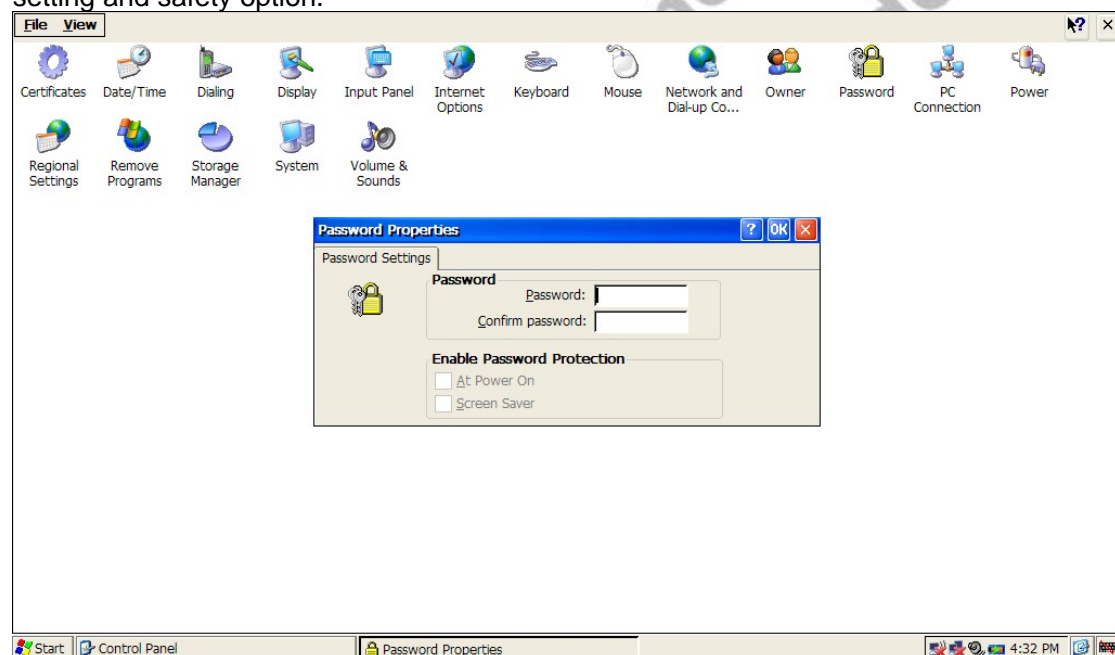
Click "Start" -> click "Setting"->click "Control Panel", then double click "Owner", the Owner Properties window will be shown as below. You can use it to modify your identity details which are stores on Wireless Book, such as name, company and address, etc.





## 5.9 Password Setting

Click "Start" -> click "Setting"->click "Control Panel", then double click "Password", the Password Properties window will be shown as below. It can change the owner's password setting and safety option.

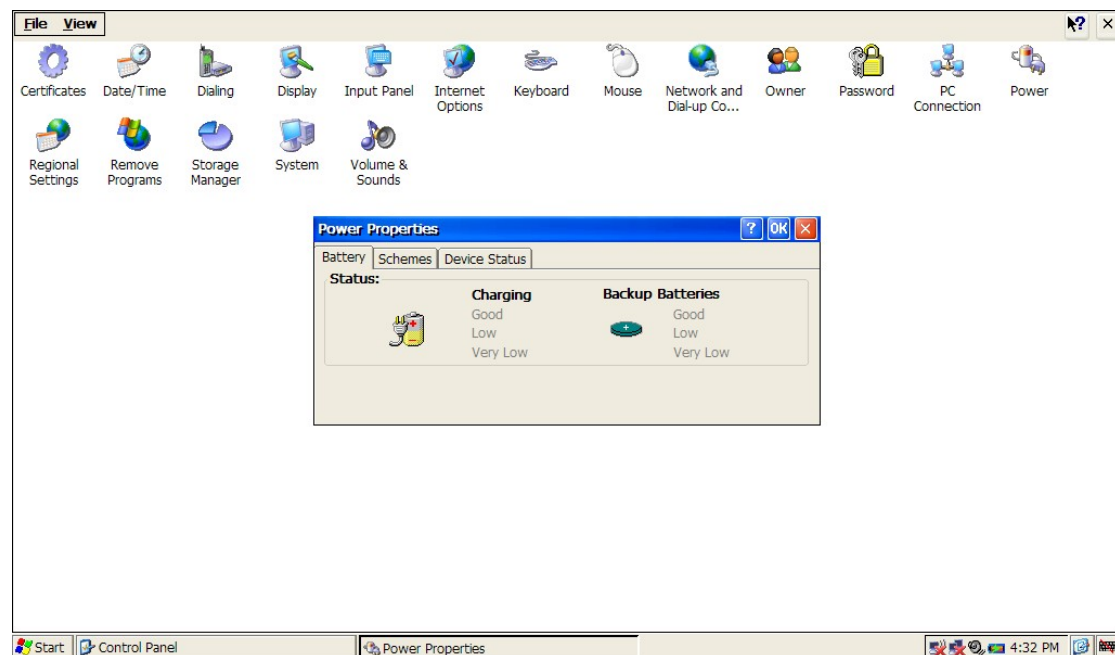


After setting the password protection, the password will need to be entered once you turn on the Wireless Book.

## 5.10 Power

You can get the power properties, Batteries status with this dialog box.

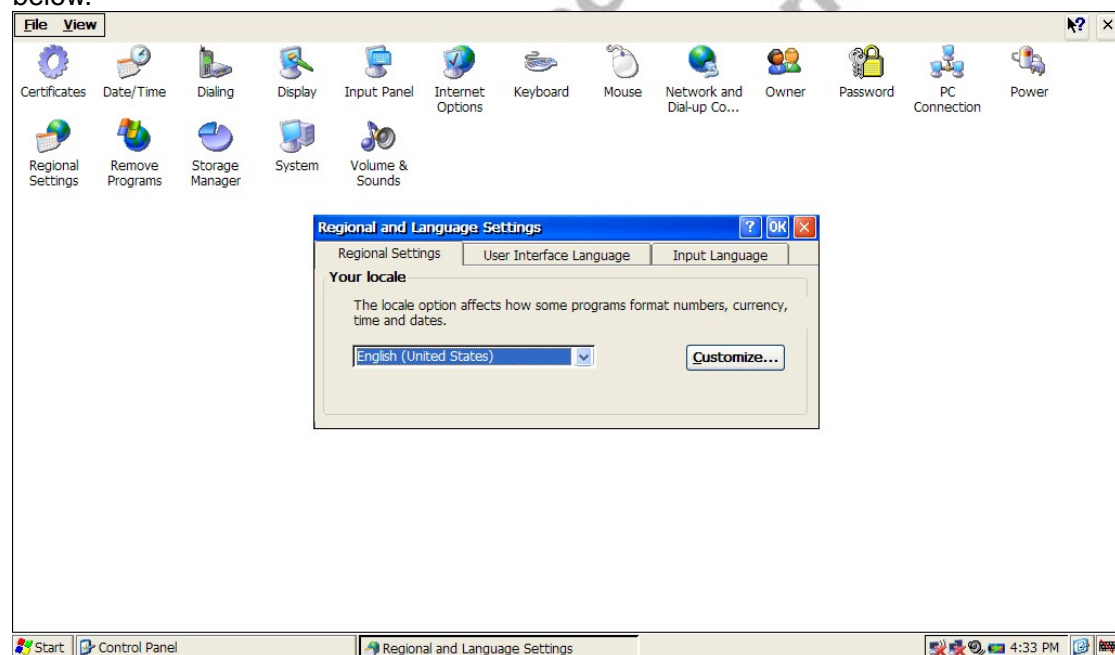
Click "Start" -> click "Setting"->click "Control Panel", then double click "Power", the Power Properties window will be shown as below.



Please note that batteries status can only indicate once no adapter is plug in for charging.

### 5.11 Regional Settings

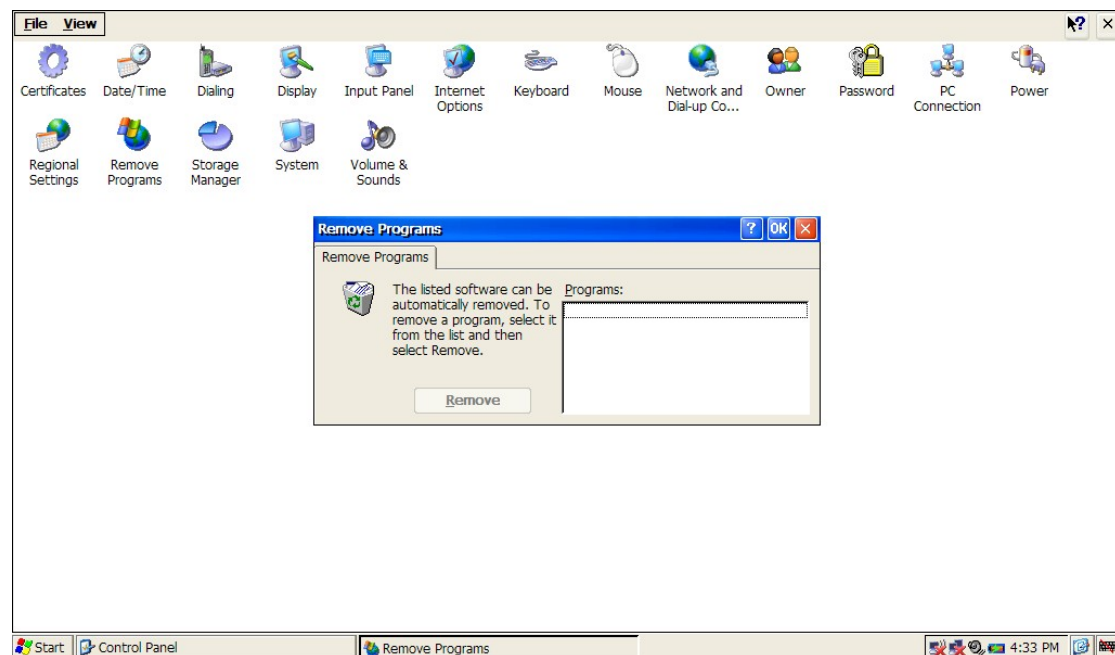
This setting can change display format of number, currency, date and time. It is suggested using default setting for "User Interface Language" and "Input language" options. Click "Start" -> click "Setting"->click "Control Panel", then double click "Regional Settings", the Regional and Language Settings Properties window will be shown as below.



### 5.12 Remove Programs

Click "Start" -> click "Setting"->click "Control Panel", then double click " Remove Programs", the Remove Programs Properties window will be shown as below. User can remove the installed program.

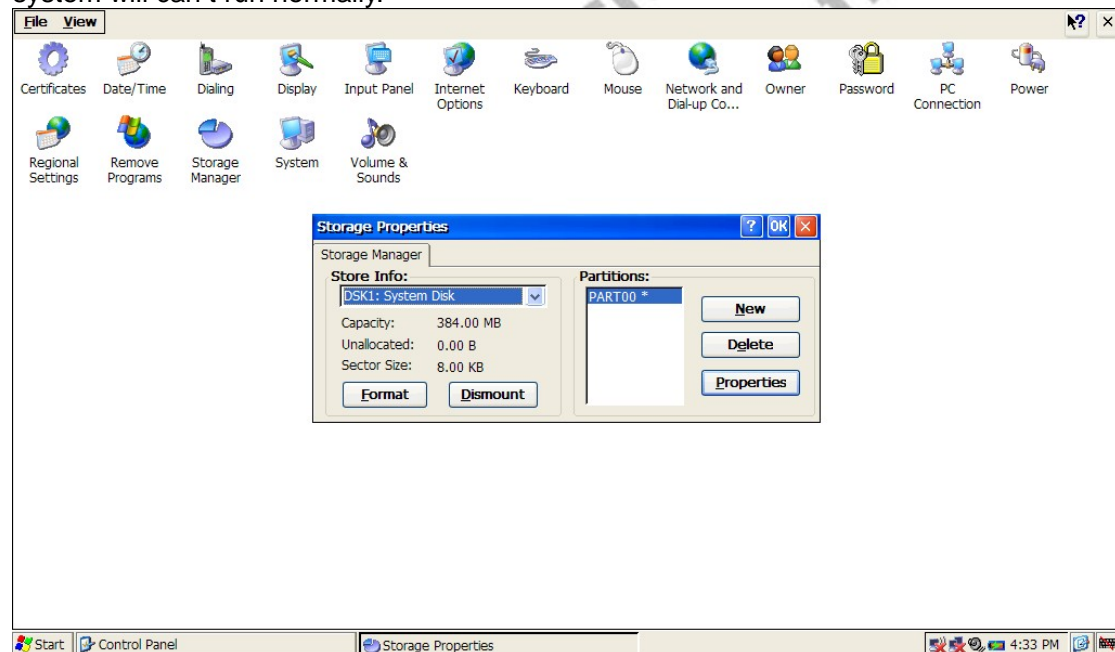




### 5.13 Storage Manager

Storage device can be managed within "Store info". Select storage device, the total capacity, unallocated capacity and sector size will be listed. The selected device can be format or dismounted in this window.

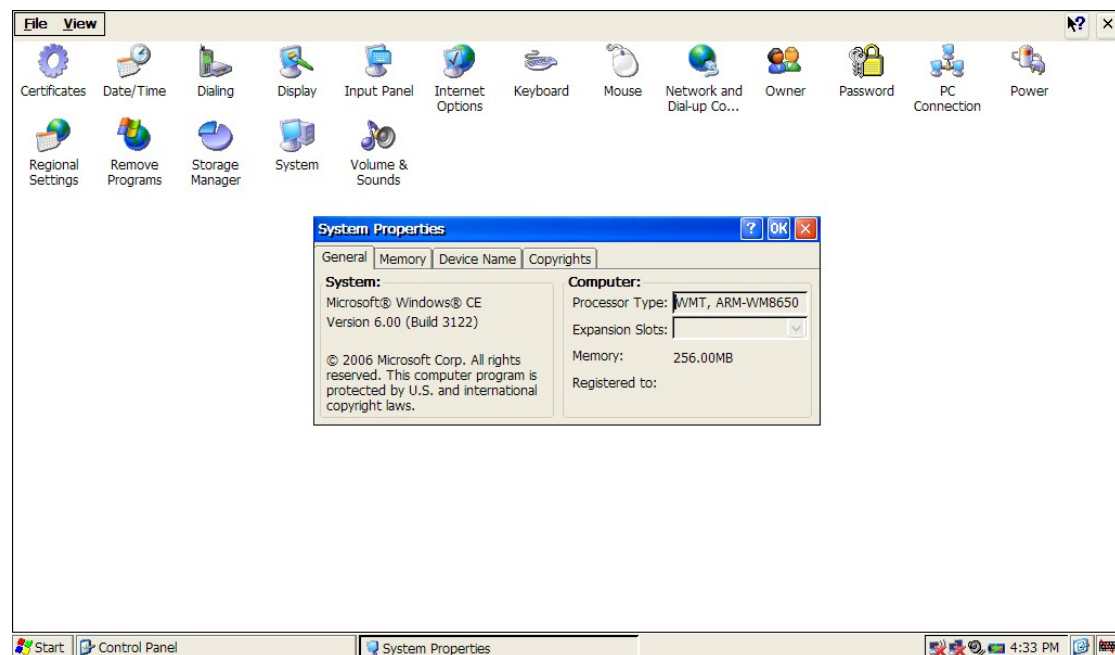
**Note:** Don't format "dsk1" and "dsk2" in the storage manager, or the Wireless Book system will can't run normally.



### 5.14 System

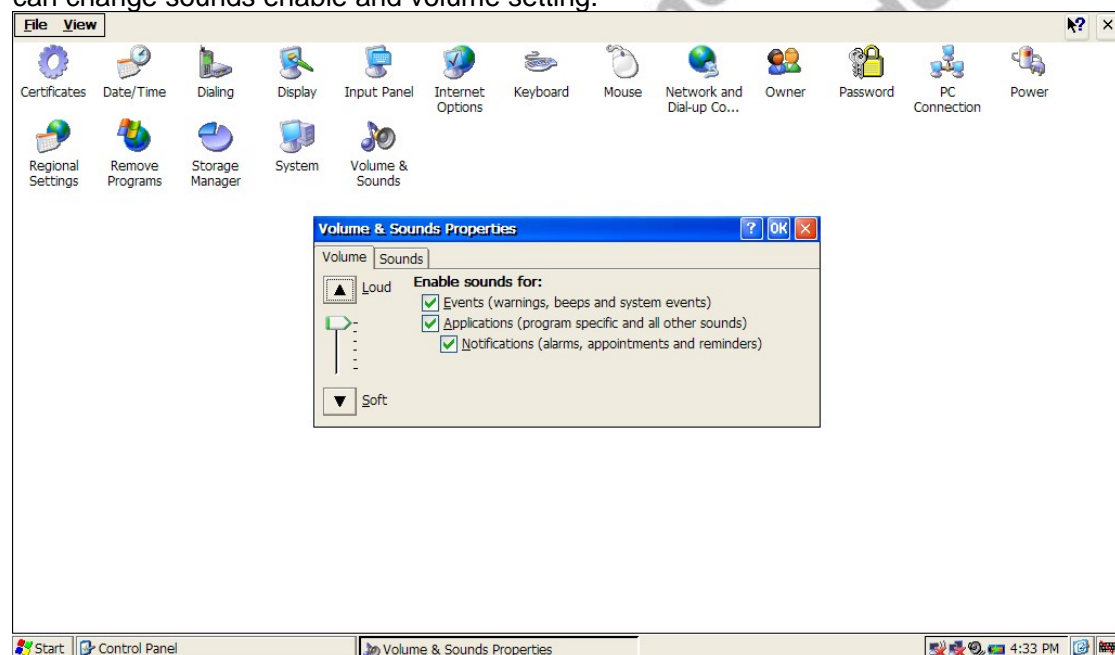
Click "Start" -> click "Setting"->click "Control Panel", then double click "System", the System Properties window will be shown as below. Check the system information and modify the memory allocation of system.

Note: Don't modify the memory allocation of system freely, or the Wireless Book system will can't run normally.



### 5.15 Volume and Sounds

Click "Start" -> click "Setting"->click "Control Panel", then double click "Volume & Sounds", the Volume & Sounds Properties window will be shown as below. This setting can change sounds enable and volume setting.



Inconsistent with the physical specifications, please prevail in kind.