

BATTERY WARNINGS:

1. Non-rechargeable batteries are not to be recharged.
2. Rechargeable batteries are only to be charged under adult supervision.
3. Rechargeable batteries are to be removed from the toy before being charged.
4. Different types of batteries or new and used batteries are not to be mixed.
5. Batteries are to be inserted with the correct polarity.
6. Exhausted batteries are to be removed from the toy.
7. The supply terminals are not to be short-circuited.
8. The toy is not to be connected to more than recommended number of cover supplies.
9. The toy is not intended for children under 3 years old.
10. Regular examination of transformer or battery charge for any damage to their cord, plug, enclosure and other parts; they must not be used until the damage has been repaired.
11. Do not mix old and new batteries.
12. Do not mix alkaline batteries (standard (carbon-zinc) or rechargeable batteries).



INSTRUCTIONS

- Rechargeable batteries into the car, put 1 pack of 4.8V AA batteries into the battery box located on the chassis, then screw the cover.
- Please insert batteries into the controller, open the cover and insert 2 pcs of 1.5V AA batteries into the battery box, then screw the cover.
- Push the switch to the "ON" position on the car.
- Play the tower by controlling the control units.

Notice: This product shall be charged for four to five hours. Please note that rechargeable battery should be fully charged before first use.

Manufacturer: Doubleeagle Industry (CHINA) Limited.
Address: Xingde Industrial District, Chengde, Shantou, Guangdong, China

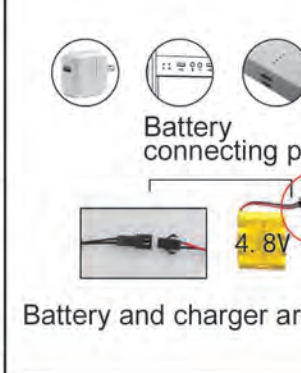
SPICIFICATIONS, COLORS AND CONTENTS MAY VARY FROM ILLUSTRATIONS.
Please refer to the package as it contains important information.
The toy is to be connected to Class II equipment bearing the symbol II.



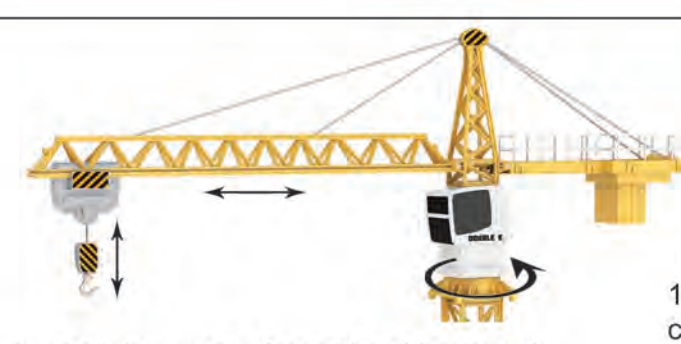
WARNING:
CHOKING HAZARD - small parts.
Not for children under 3 years.



Load 1PC of 4.8V rechargeable battery pack as per the correct polarity of the battery.



Battery connecting port.
Battery and charger are included.



Hook Down
Rotation:
Indicator

Instruction of 2.4GHz Auto-coding

1. After installing the batteries into the r/c hook and remote controller, turn on the power of both, the hook is in a state of coding. The auto-coding is successful if the indicator on remote controller turning from slow to quick flashing and then turn off after 1sec.
2. One remote controller only could code one hook. After the success of coding, there is non-interference of each hook.
3. If the remote controller could not find out the 2.4G signal of the hook in 1minute, it would turn in a sleeping state(light off of the indicator). To press any key to activate.
4. To remake a pair with other hooks or remote controllers after turning off the power of both.



Hook Down
Rotation:
Indicator

Cell cover

ITEM NO. E563-003

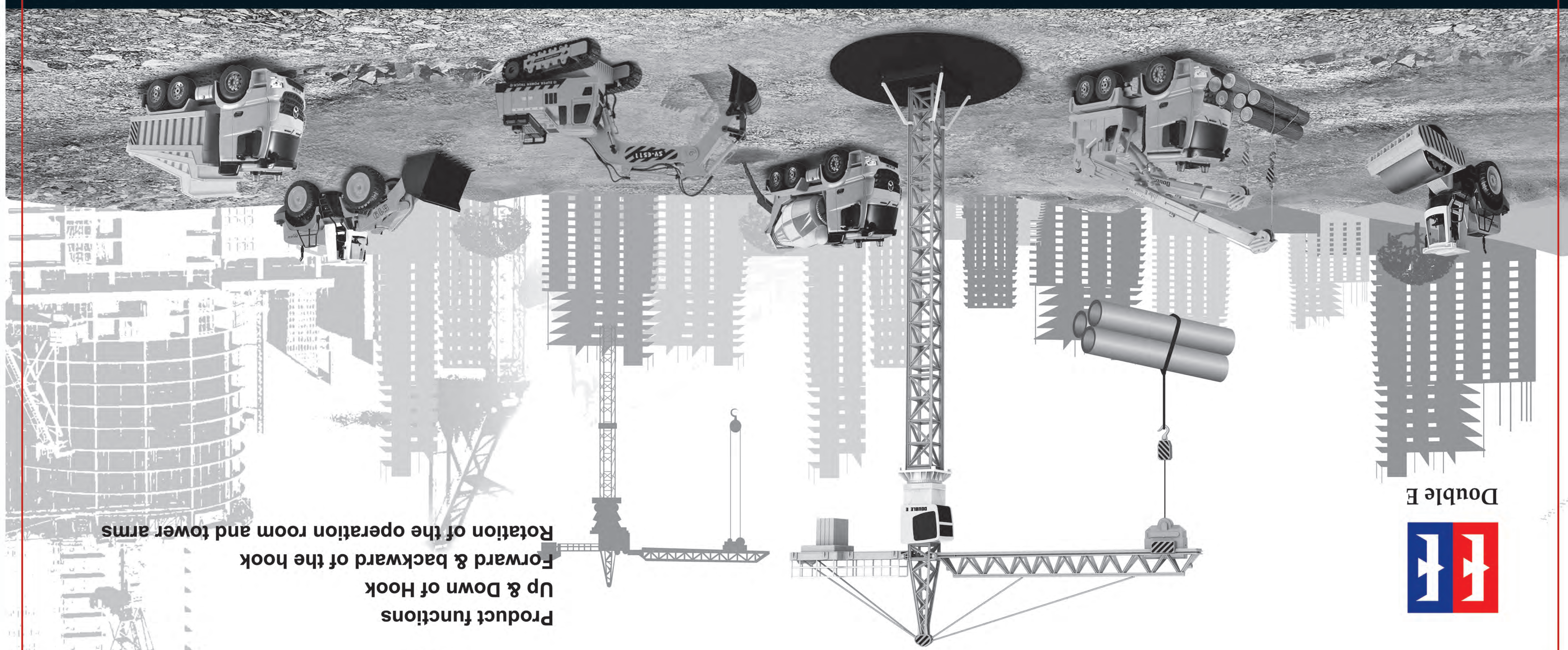


Frequency band: 2400MHz to 2475MHz
Maximum output power: $0.30W$
Manufacturer: Doubleeagle Industry (China) Limited.
Address: Xingde Industrial Park, Chengde, Shantou, Guangdong Province, China.
Address: 1st, Mainul Nattear
An Lauterbach 11 - DE-88117 Albstadt Germany
changes or modifications not expressly approved by the party responsible for compliance could void the user's authority to operate the equipment.
This equipment has been tested and found to comply with the limits for a Class B digital device, pursuant to Part 15 of the FCC Rules. These limits are designed to provide reasonable protection against harmful interference in a residential installation. This equipment generates, uses and can radiate radio frequency energy and, if not installed and used in accordance with the instructions, may cause harmful interference to radio communications. However, there is no guarantee that interference will not occur in a particular installation.
If this equipment does cause harmful interference to radio or television reception, which can be determined by turning the equipment off and on, the user is encouraged to try to correct the interference by one or more of the following measures:
- Reorient or relocate the receiving antenna.
- Increase the separation between the equipment and receiver.
- Connect the equipment into an outlet on a circuit different from that to which the receiver is connected.
- Consult the dealer or an experienced radio/TV technician for help.

Remote Control Tower Crane

www.doubleeagle.cn

Manufactured by Double E



Product functions
Up & Down of Hook
Forward & backward of the hook
Rotation of the operation room and tower arms

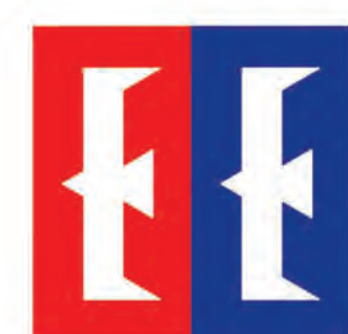
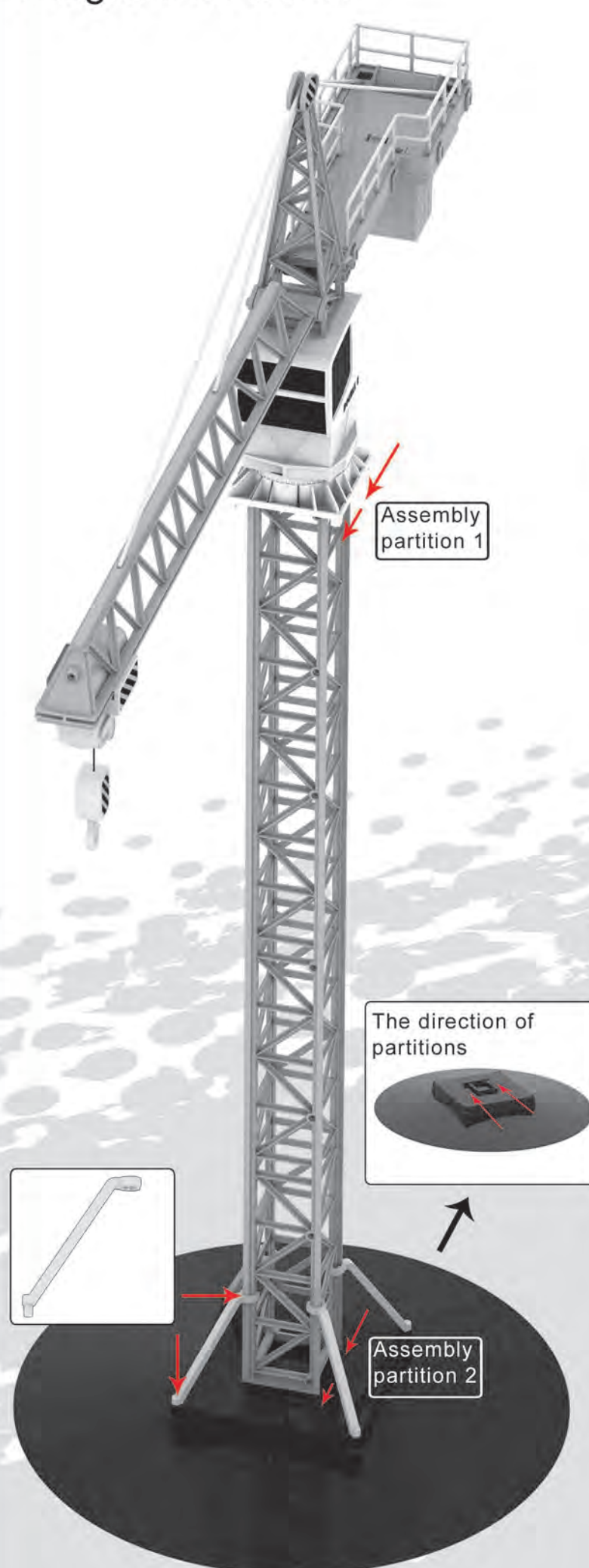


Remote Control Tower Crane

DOUBLE E
HEAVY INDUSTRY

6+

Double E Heavy Industry
Assembly
diagram of tower

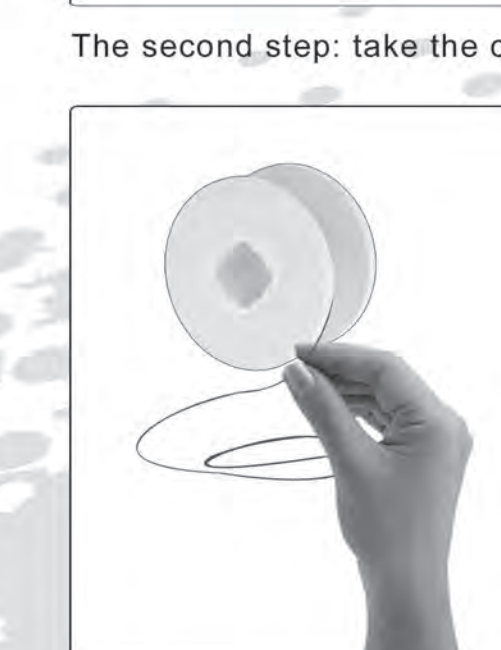
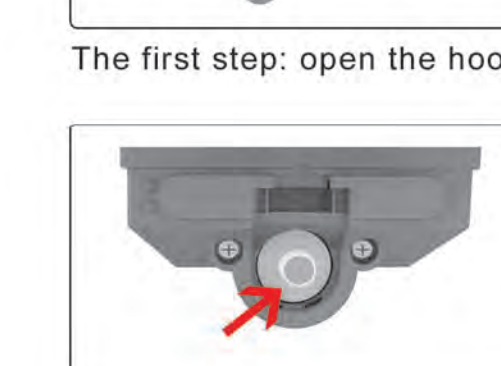
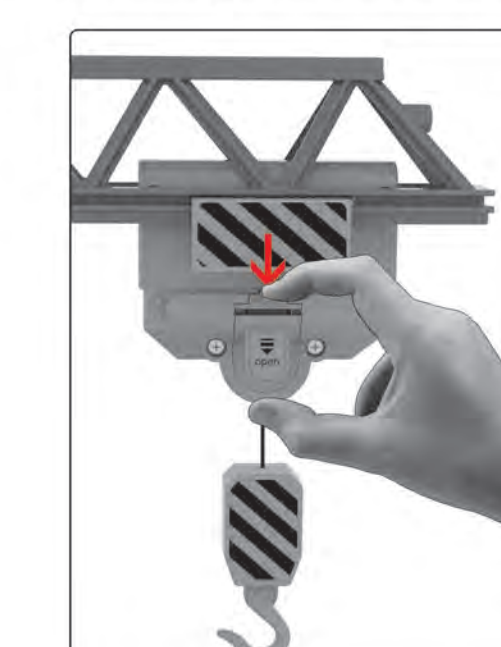


Double E
E563-003

RC
RADIO CONTROL
1/20



Flowchart of dismounting/
assembling the coil of the hook



The third step: remove all thread from the coil, put the coil into the original place and then close the cover. (Do not squeeze the thread when putting the coil into place.)

Manufactured by Double E

www.doubleeagle.cn

Remote Control Tower Crane