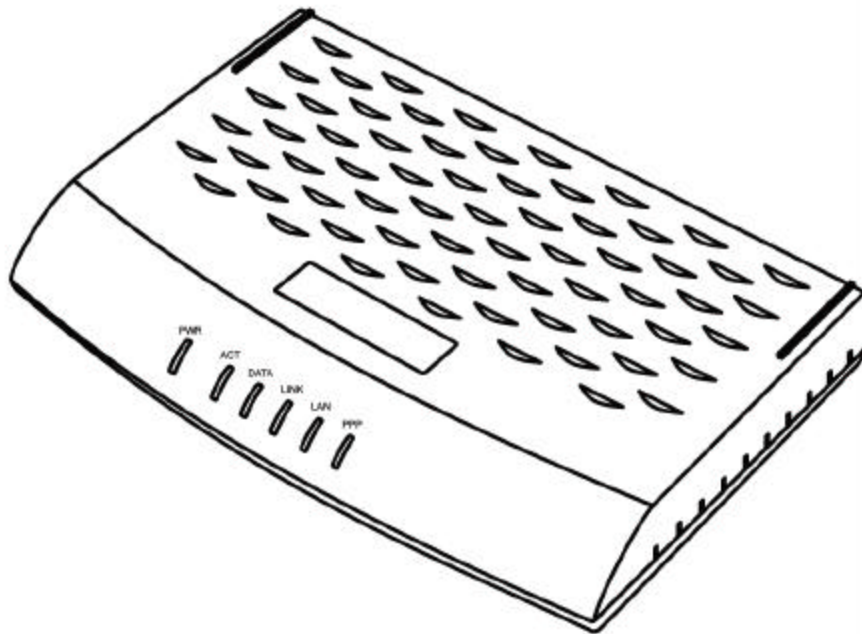

201 (ER/ES)

User's Manual

201 ADSL Ethernet Modem



Copyright© 2002 SEROME Electronics Inc.

All Rights Reserved.

No part of this publication may be reproduced or distributed in any form or by any means, or stored in a database or retrieval system, without the prior written permission of SEROME Electronics, Inc.

FCC NOTICE

THIS DEVICE COMPLIES WITH PART 15 OF THE FCC RULES.
OPERATION IS SUBJECT TO THE FOLLOWING TWO CONDITION:
(1) THIS DEVICE MAY NOT CAUSE HARMFUL INTERFERENCE, AND
(2) THIS DEVICE MUST ACCEPT ANY INTERFERENCE RECEIVED,
INCLUDING INTERFERENCE THAT MAY CAUSE UNDERSIRED
OPERATION.

This equipment has been tested and found to comply with the limits for a Class B digital device, pursuant to part 15 of the FCC Rules. These limits are designed to provide reasonable protection against harmful interference in a residential installation.

This equipment generates, uses and can radiate radio frequency energy and, if not installed and used in accordance with the instructions, may cause harmful interference to radio communication. However, there is no guarantee that interference will not occur in a particular installation. If this equipment does cause harmful interference to radio or television reception, which can be determined by turning the equipment off and on, the user is encouraged to try to correct the interference by one or more of the following measures :

- Reorient or relocate the receiving antenna.
- Increase the separation between the equipment and receiver.
- Connect the equipment into an outlet on a circuit different from that to which the receiver is connected.
- Consult the dealer of an experienced radio/TV technician for help.

NOTE : The manufacturer is not responsible for any radio or TV interference caused by unauthorized modifications to this equipment. Such modifications could void the user's authority to operate the equipment.

Contents

Chapter 1. Introduction

What is ADSL	5
201 Layout and LED Description	6
201 Specification	9

Chapter 2. Before Installation

Safety Check.....	11
The climate condition Check.....	11
System Requirement Check	12
201 Package Check	13

Chapter 3. Installation Of 201

Installation 201	15
Connect and Disconnect the Internet	30

Chapter 1. Introduction

This chapter provides the brief concept of ADSL, and the external form and specification of 201.

This chapter covers the following topics:

What is ADSL

201 Layout and LED Description

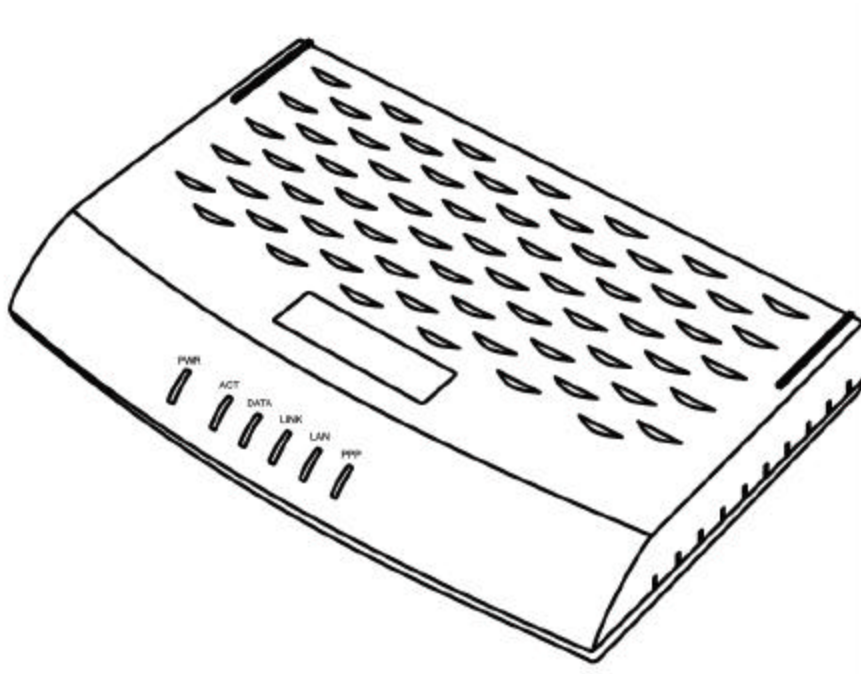
201 Specification

What is ADSL

ADSL (Asymmetric Digital Subscriber Line) is a technology for transmitting digital information at a high bandwidth on existing phone lines to homes and businesses. Unlike regular dialup phone service, ADSL provides continuously available, "always on" connection. ADSL is asymmetric in that it uses most of the channel to transmit downstream to the user and only a small part to receive information from the user. ADSL simultaneously accommodates analog (voice) information on the same line. ADSL is generally offered at downstream data rates from 512 Kbps to about 8 Mbps, upstream data rates up to 1Mbps.

ADSL was specifically designed to exploit the one-way nature of most multimedia communication in which large amounts of information flow toward the user and only a small amount of interactive control information is returned.

201 Layout and LED Description

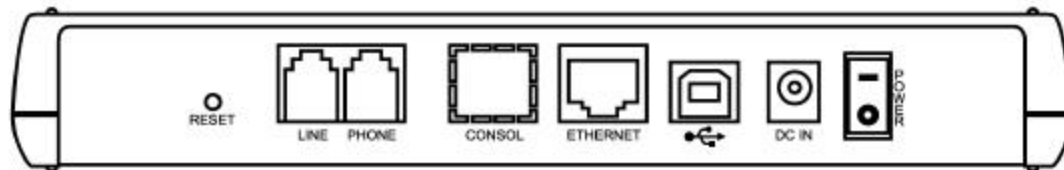


201 (Front view)

Front Panel LED layout (LED numbering from the left side)

LEDs	Color	Status	Meaning
PWR	Green	- Solid - Off	- Power Detected - Power Off
ACT	Green	- Solid - Flashing	- Device passed self test - Device failed self test
DATA	Green	- Flashing	- Data is transmitted to the ADSL line
LINK	Green	- Flashing - Solid	- Trying to connect the ADSL line - ADSL line has synchronized with your service provider
LAN	Green	- Flashing - Solid	- Data is transmitted or received to the LAN side - Ethernet interface is active
PPP	Green	- Solid - Off	- PPP connection - PPP disconnection

* Note: The PPP LED will only work when PPPoE or PPPoA encapsulation is selected



201 (Back side view)

(Back Panel numbering from left side)

Location	Lable	Port	Function
	LINE	ADSL Line Port	Connects telephone Line cable in ADSL line.
	PHONE	Telephone Connection Port	Connects the telephone cable in your telephone.
	Ethernet	Ethernet port	Connects Ethern et cable from the LAN port in your PC.
	USB	USB port	Ethernet Firmware Upgrade (Option), USB connection
	DC IN	DC IN port	Connects Adaptor
	Power	Power Switch	201 Ethernet Power On/Off

<<Notice >>

When you connect the telephone cable in your telephone, Micro filter must be attached.

201 Modem Specification

	Specification
Size (outfit)	135mm(W) x 200mm(D) x 20mm(H)
Power (V / A)	Input AC 120V/60Hz, Output DC 12V 1A
Operating Temperature	5 ~ 45
ADSL Standards compliant	ANSI T1.413 Issus 2, ITU G.DMT(G.992.1), ITU G.Lite(G.992.2)
Connection Speed	Down Stream(Rx) : 8Mbps(Max) , Up Stream(Tx) : 1Mbps (Max)
Modulation	DMT (Discrete multi-tone)
Connector	Telephone Line(RJ -11) connector -2 port , Ethernet 1 port, USB Line 1 port,
Interface	Ethernet Interface
Operating System	Windows 98/98SE/ME/NT 4.0/2000/XP, Macintosh, Linux, UNIX compliant
Protocol	PPP Over ATM (RFC 2364) Bridged/RoutedEthernet Over ATM (RFC 1483/2516) Classical IP Over ATM (RFC 1577)
P V C value range	VPI: 0~255 , VCI :0~65,535

<<Notice >>

The connection speed of 201 may vary depending on your ADSL service, the ADSL line condition, your PC specification and the distance between ADSL modem and Central Office of your local ADSL service provider.

Chapter 2. Before Installation

This chapter provides basic safety information before installation. Please read this chapter very carefully before installation.

This chapter covers following topics:

Safety Check

The climate condition Check

System Requirements Check

201 Package Check

Safety Check

Before installing and using 201, please the following topics must be checked first.

Safety check related to the electricity, heat and water.

201 is Ethernet type ADSL modem, so you must connect 201 to the Ethernet Port in your PC.

201 must be located in safe space such as near non-grounded extension cable, torn power cable and very close to the power outlet.

201 generates the heat when it is operating. It must not be exposed to heat trap conditions.

It must not be used near water, like a bathtub, kitchen sink or in a wet basement.

These environments could damage 201 or effect the performance of 201.

The climate condition Check

For installing 201 in safe and being used properly, please be aware of the climate

Condition first.

201 is connected either Desktop PC or Laptop PC, so check the climate conditions of your PC and follow those instruction first.

It's recommendable that 201 is being used in same temperature and humidity.

The range of operating 201 is

Operating temperature : 5 ~ 45

relative humidity : 10 ~ 85 % (non-condensation case)

System Requirements Check

Before installing and using 201, please the following topics must be checked first.

PC Operating System

Windows 95

Windows 98

Windows 98SE

Windows Millennium Edition

Windows 2000 Home Edition & Professional

Windows XP Home Edition & Professional

Macintosh, Linux, UNIX

System Specification (Recommended).

The performance of 201 depends on your system specification, so following specification is recommended.

OS : Windows 98/98SE

CPU :Pentium II 350MHz or higher

System Memory(RAM): 64MB or higher

LAN Card : Connect Ethernet Port

201 package Check

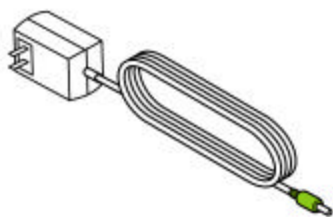
When opening 201 Package, please check the following items in the Package.



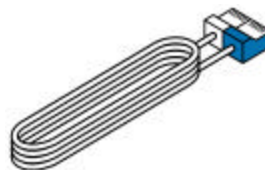


201 (ADSL Ethernet Modem)

CD(Manual and USB Driver)



Power Adaptor



Direct UTP Cable (RJ-45)



Telephone Line Cable (RJ-11)

Items	Quantity
201 (ADSL Ethernet Modem)	: 1
Power Adaptor	: 1
Telephone Line Cable (RJ-11)	: 1
CD(Manual & USB Driver)	:1
Direct UTP Cable (RJ-45)	: 1

Chapter 3. Installation of 201

This chapter provides the brief concept of ADSL, and the external form and specification of 201.

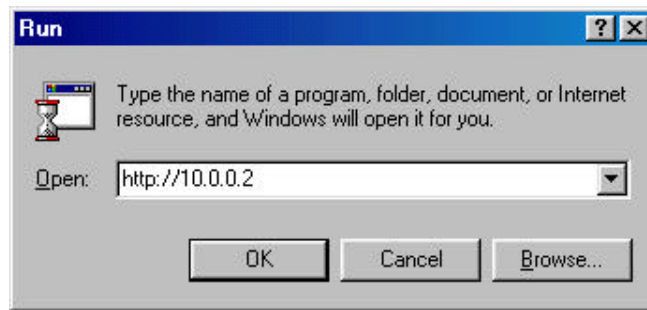
This chapter covers the following topics:

Installation 201

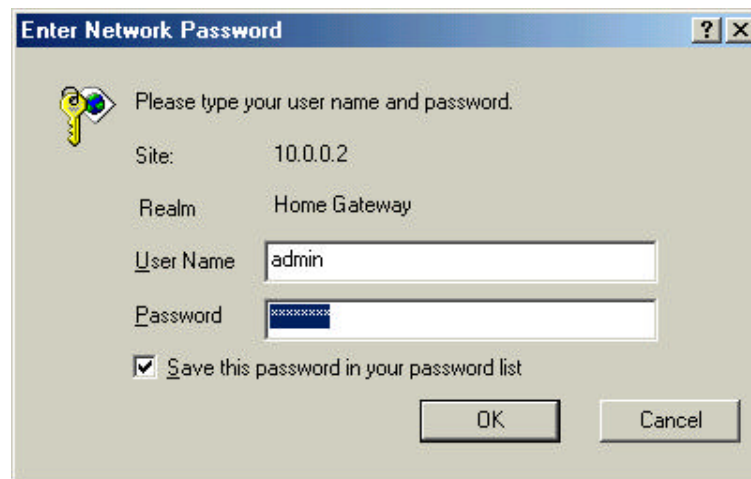
Connect and Disconnect the Internet

Installation 201

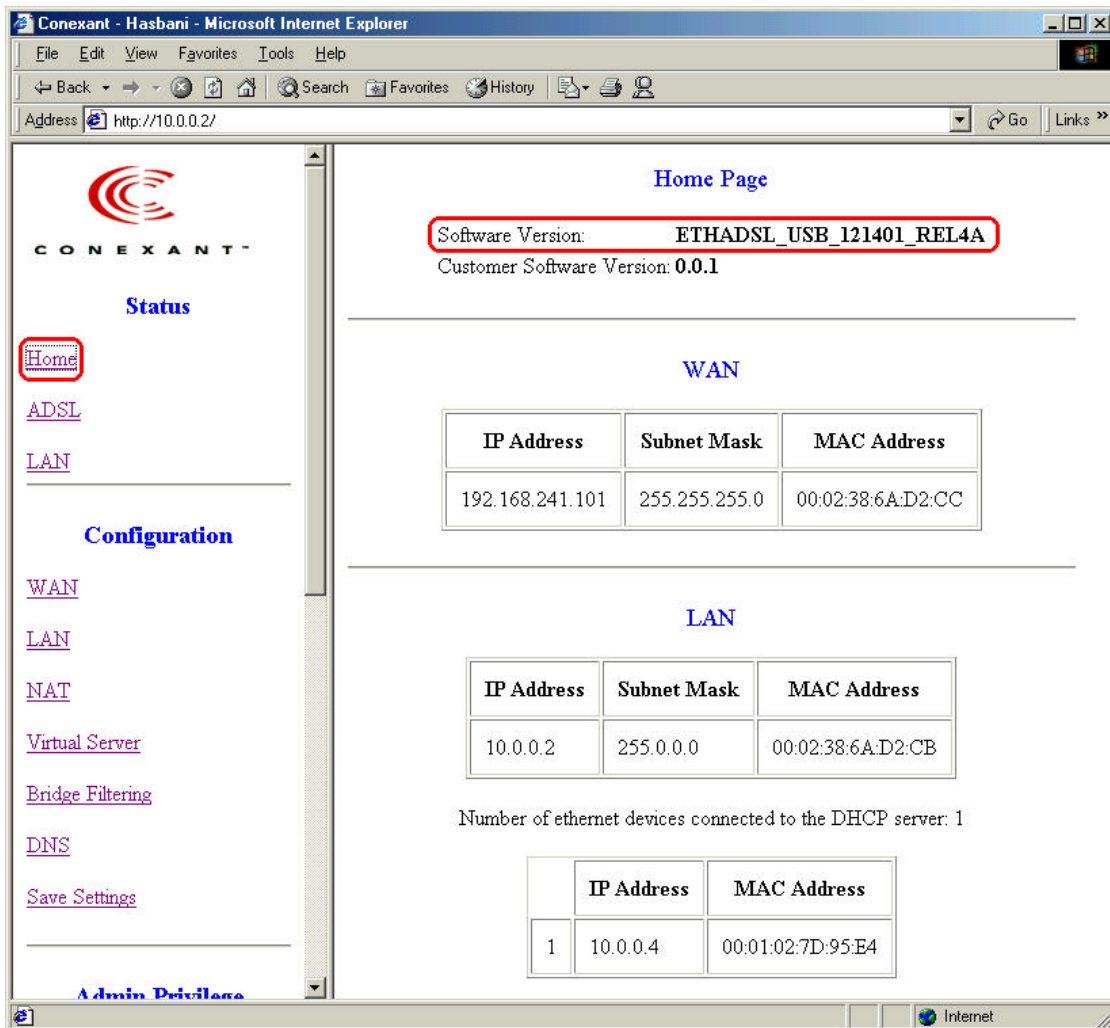
1. Start Internet Explorer to view or reset the configuration of the ADSL
And type [**http://10.0.0.2**] at [Open] and click [OK] button.



2. Enter “**admin**” at [User Name], “**conexant**” at [Password] as below and click [OK] button to proceed.



- (1) ADSL Home Page : If it is connected, the homepage as below is to appear.



(2) ADSL Status Information : You can check the connection status and the connection speed(Upstream and Downstream).