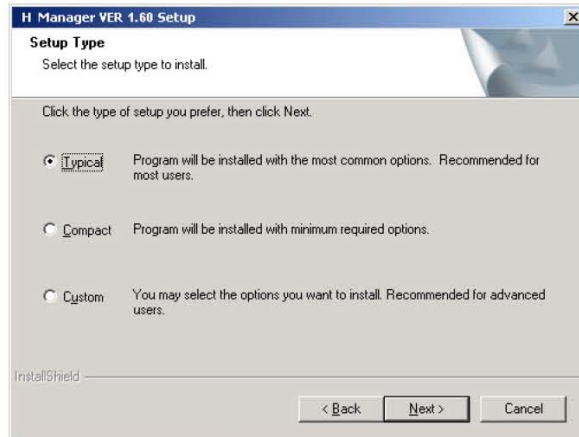
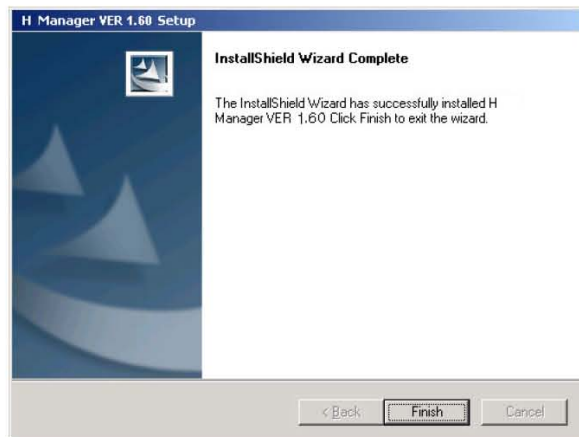


6 Click the installation option and click the "Next" button.



7 Click the "Finish" button when the installation complete screen is displayed.



### Installing the device driver

The device driver is required for the Windows 98 SE operating system.



**[Note]**

- The managing software needs to be installed before installing the device driver. Please see [Page 28, 2. Getting started - 3. Installing the software - installing the managing software] for details on installing the managing software.

- 1 Connect the product to a PC with the USB cable included.
- 2 If the product is not recognized by the PC, an "Add new hardware wizard" window is opened. Click the "Next" button.



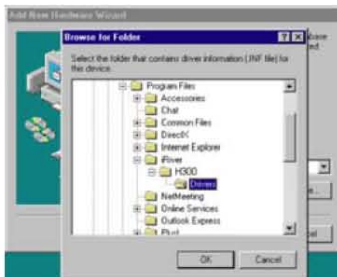
- 3 Click the "Search for the best device driver (recommended)" and click the "Next" button.



4 Click "Locate folder to search (L)" and click the **"Browse"** button.



5 Select the installation folder that includes the iRiverH.inf file (C:\Program Files\iRiver\H300\drivers) and click the **"OK"** button.



6 When the folder is located, click the **"Next"** button.



7 Click the **"Next"** button



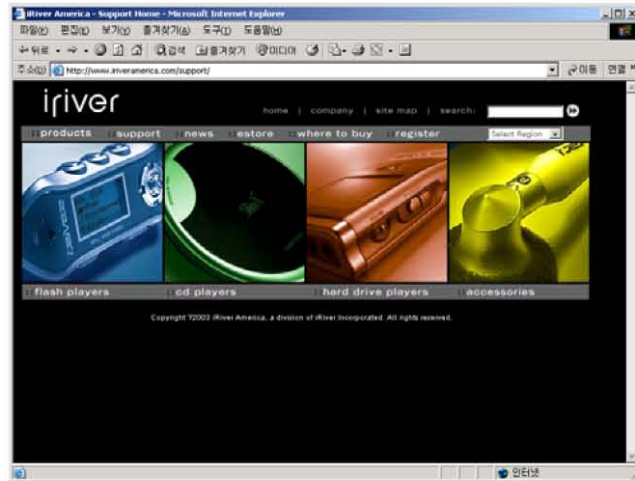
8 Click the **"Finish"** button to finish the installation.



## Upgrading the Firmware

The Firmware is the internal operating system of the H300. The company is continuously improving the product by upgrading the Firmware.

- 1 Connect the product to a PC with the USB cable. Please see [Page 24, 2. Getting Started - 2. Connecting the product - Connecting to a PC] for how to connect the product to a PC.



- 2 Download the latest Firmware file from the company website ([www.iRiver.co.kr](http://www.iRiver.co.kr) - Customer Service -> Download)
- 3 Uncompress the H300.hex file from the download file.
- 4 Copy the H300.hex file to the top folder of the H300 drive.
- 5 Connect the AC adapter to the product.

### ⚠ [Warning]

- ▶ Without the AC adapter, the firmware upgrade may fail due to battery power shortage.

- 6 Press and hold the **Menu** button to open the Menu screen.



- 7 Use the **Left**, **Right**, **Up**, and **Down** buttons in the Menu to select the General option. Click the **Menu** button to open the General sub menu screen.



- 8 Use the **Left**, **Right**, **Up**, and **Down** buttons to select the **Firmware Upgrade** item. Press the **Menu** button to open the Firmware Upgrade screen.



- 9 Select YES in the Firmware Upgrade screen then confirm with the **Menu** button. Do not disconnect the AC adapter or turn the power off until the Firmware Upgrade is completed.

- 10 The system is automatically turned off after completing the Firmware Upgrade. Press the **Power** button to turn the power on. Check out the improvements in the H300.



## Getting up and running

1 Connect the Remote Controller and Earphones to the product.

2 Press the button to turn the power on.



**[Note]**

• If the product is not responding, check if the HOLD switch is OFF. If the HOLD switch is set, the following message is displayed in the product.



3 See the initializing screen.



4 The playback standby screen is displayed.



5 Use the button to playback a music file. Use the buttons while playing to playback another music file.



**[Note]**

- Use the buttons to control volume.
- Press the button again to pause the playback.
- Press the button to end the playback. The playback standby screen is displayed.
- Press and hold the button to turn the power off.
- Press and hold the button to open the function selection screen.
- Use the buttons in the function selection screen to select a desired function. Press the button to confirm the selection and run the selected function.








## Using the buttons

### Main System

Item	Description
	<ul style="list-style-type: none"> <li>• Turns the power on when the power is off.</li> <li>• Plays a music file in the playback standby screen.</li> <li>• Pauses the play while playing a music file.</li> </ul>
	<ul style="list-style-type: none"> <li>• Press and hold the button to turn the power off when the power is on.</li> <li>• Stops the play while playing a music file.</li> <li>• Stops the recording while recording.</li> </ul>
	<ul style="list-style-type: none"> <li>• Changes the repeat mode while in playback standby or playing.</li> <li>• Press and hold the button to open the functions screen.</li> <li>• Starts recording in the recording standby screen.</li> <li>• Pauses the recording during a recording.</li> </ul>
	<ul style="list-style-type: none"> <li>• Press and hold the button while in playback standby or playing to open the EQ Setting mode.</li> <li>• Changes EQ/SRS in the EQ Setting mode.</li> <li>• Press the button twice during playback for the section repeat function. Please see [Page 57, 4. Useful features - 7. Setting Play Mode - Section repeat] for details.</li> </ul>
	<ul style="list-style-type: none"> <li>• Opens the Navigation screen during playback.</li> <li>• Press and hold the button while in playback standby or playing to open the Menu screen.</li> </ul>
	<ul style="list-style-type: none"> <li>• Increases volume while in playback standby, playing, or listening to radio.</li> </ul>
	<ul style="list-style-type: none"> <li>• Decreases volume while in playback standby, playing, or listening to radio.</li> </ul>
	<ul style="list-style-type: none"> <li>• Plays the previous title, when in playback.</li> <li>• Press and hold the button while playing to fast rewind.</li> <li>• Press the button twice and hold while in playback standby to move back to the previous folder.</li> <li>• Select the previous channel when listening to radio.</li> </ul>
	<ul style="list-style-type: none"> <li>• Plays the next title when playing.</li> <li>• Press and hold the button while playing to fast forward.</li> <li>• Press the button twice and hold while in playback standby to move forward to the next folder.</li> <li>• Select the next channel when listening to radio.</li> </ul>




## Remote Controller

Item	Description
	<ul style="list-style-type: none"> <li>• Turns the power on when the power is off.</li> <li>• Plays a music file in the playback standby screen.</li> <li>• Stops the play while playing a music file.</li> <li>• Press and hold the button to turn the power off when the power is on.</li> </ul>
	<ul style="list-style-type: none"> <li>• Plays the previous title when playing.</li> <li>• Press and hold the button while playing to fast rewind.</li> <li>• Press the button twice and hold it to return to the previous folder.</li> <li>• Select the previous channel when listening to radio.</li> </ul>
	<ul style="list-style-type: none"> <li>• Plays the next title when playing.</li> <li>• Press and hold the button while playing to fast forward.</li> <li>• Press the button twice and hold it to return to the next folder.</li> <li>• Select the next channel when listening to radio.</li> </ul>
	<ul style="list-style-type: none"> <li>• Increases volume while in playback standby, playing, or listening to radio.</li> </ul>
	<ul style="list-style-type: none"> <li>• Decreases volume while in playback standby, playing, or listening to radio.</li> </ul>








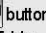

## Playing music files

### Playing music

- 1 The playback standby screen follows the initialization screen when the power is turned on. Basic playback information, including the number of folders and music files, is displayed.
- 2 Start playing with the  button. Use the  and  buttons while playing to play another title.



#### [Note]

- Use the  buttons to control volume.
- Press the  button again to pause the playback.
- Press the  button to end the playback. The playback standby screen is displayed.
- Press and hold the  buttons while playing to fast forward or fast rewind the title.
- Press the  or  button twice and hold it to return to the previous folder or forward to the next folder.
- Please see [Page 53, 4. Useful features - 10. Music title search] for the details on the music file search.
- Press the  button while playing to change the Repeat mode. Please see [Page 56, 4. Useful features - 10. Setting the playback mode] for the details.
- ID3 Tag information is displayed during the playback.
- Only MP3, OGG, WMA, and ASF, IRM files are supported.
- If the music file is damaged, the damaged section is skipped. If the file is seriously damaged, the file is skipped.



## Listening to the FM radio

Listen to FM radio broadcasting

### Listening to the FM radio

- 1 Press and hold the button to open the functions menu.



- 2 Use the buttons to select the Radio icon then press the button to open the radio screen.

- 3 Press the buttons to select a channel. Press and hold the buttons to search for channels automatically. When a frequency is found, the radio will play.



#### [Note]

- Press the button to switch between Stereo / Mono.
- In areas where the signal is weak, some channels may be unavailable, or reception may be patchy.

### Searching for a FM radio frequency

#### Manual Search

Press the buttons in the radio screen to change frequency by 0.1 MHz. Keep pressing the button until the desired channel is found.

#### Auto Scan

Press and hold the buttons to search for an available channel automatically. Hold the button until the desired channel is scanned.



#### Preset Function

- 1 Press the button in the radio screen to set the Preset ON.



- 2 Press the buttons to select the next / previous channel. Use the buttons again until the desired channel is selected.



#### [Note]

- The AUTO SCAN and AUTO MEMORY functions do not work while Preset is ON.
- In manual search, using the buttons changes the frequency by 0.1MHz in Korea / U.S.A / Japan, and 0.05 MHz in Europe.



## Setting preset channels

### Manual setting

1 Use the button in the radio screen to set the Preset OFF.

2 Use the buttons to select the desired channel then press the button to display the channel number.



3 Use the buttons to select the desired channel number. Press the button to set it. The number of preset channels are displayed as 'TOTAL XXCHs'. Press the button to cancel the saving. A maximum of 20 channels can be set using the same procedure.

### AUTO MEMORY

1 Use the button in the radio screen to set the Preset OFF.

2 Press and hold the buttons: you can see the frequency increasing. Channels are automatically scanned and saved in order in Preset.



**[Note]**

• In area with weak signals, some channels may not be saved.

### Deleting Preset Memory

1 Use the button in the radio screen to set the Preset ON. (Preset Listening Mode)

2 Use the buttons while the Preset is ON to select a channel to delete.

3 Press and hold the button to delete the channel and display the next channel. Press and hold the button again to delete the next channel.



**[Note]**

• If all preset channels are deleted, 'TOTAL 00CHs' is displayed, and pressing the button does not switch the system to Preset ON mode.

### Recording FM radio broadcasting

1 Press the button while receiving FM radio to record it.

2 Press the button while recording to pause the recording. Press the button again to resume the recording.

3 Press the button while recording to end the recording.



**[Note]**

• Volume control is disabled while recording.  
• The recorded file is saved as 'ROOT\RECORD\AUDIO\TUNERXX.MP3'



# Recording

## Recording

1 Press and hold the button to open the functions menu.



2 Use the buttons to select the Record icon then press the button to open the record standby screen.



3 Press the button in the record standby screen to open the Record Setting screen.



4 Press and hold the buttons in the Record Setting screen to select the Source item. Setting the Source option will change Bit rate, Input Volume, and Output Volume accordingly.



### [Note]

- Required options (Bit rate/Input Volume/Output Volume) are preset according to each Source option. It is also possible to change the preset options for each Source option for recording.
- Source Types  
 LINE IN: Analog signal from an external device  
 INT. MIC: Voice using the internal microphone  
 EXT. MIC: Voice using an external microphone  
 TUNER: When record FM radio
- Bit rate  
 Voice quality of the recording. (40~320Kbps)
- Input Volume  
 Volume of the recording. High Input Volume increases the volume of the recording file.
- Output Volume  
 The product supports monitoring of the recording sound. This option changes the monitoring volume and does not affect the recording file.

5 Use the buttons to select an option and use the buttons to change the Bit rate, Input Volume, or Output Volume.

6 Press the button to start the MP3 recording.



### [Note]

- While recording from an external device, the external signal has priority for playing.
- Volume control is not available while recording
- Please do not place the microphone too close to or far from the lips.

Useful features