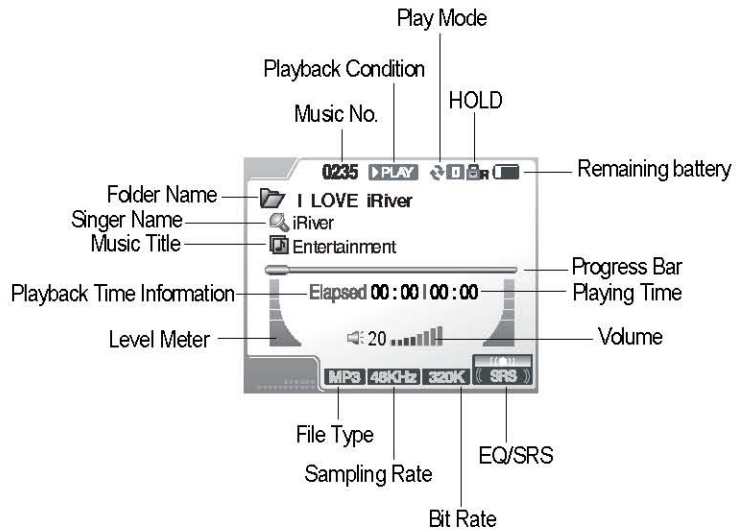


## Using the LCD screen



### [Note]

The following icons are displayed to indicate the type of file playing.

- MP3** MP3 file
- WMA** WMA file
- OGG** OGG file
- ASF** ASF file
- IRM** IRM file

#### ► What is IRM (iRiver Rights Management)?

The IRM is digital copyright information file designed by iRiver Limited. The IRM technology protects copyright and property from unauthorized usage of digital contents provided through iRiver Limited.

The following icons are displayed to indicate HOLD status.

- HOLD (both):** The HOLD function is set in both the product and the remote controller.
- HOLD (product):** The HOLD function is set in the product.
- HOLD (remote):** The HOLD function is set in the remote controller.



## Connecting the product

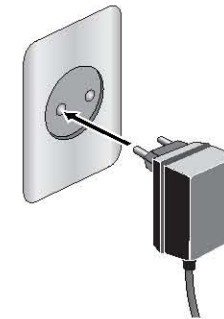
### Connecting the Power


#### Connecting the adapter

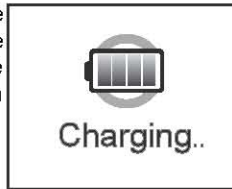
- 1 Connect the AC adapter to the system's 5.0V DC connector.



- 2 Connect the AC adapter plug to a power socket.



- 3** If a power source is connected when the product is turned off, the following message is displayed in the system LCD. Press the  button while charging to start the system in play mode.



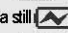

- 4** If the battery is fully charged, the charging process is automatically terminated and the charging indicator lamp is turned off.

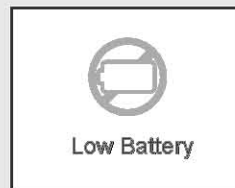


· Charge Time: 3 hours (if the battery is fully discharged)



**[Note]**

- If the power source is connected when the product is turned on, the battery icon  is animated. After charging is finished, the icon becomes a still .
- If the battery is fully discharged, the following message is displayed in the system LCD.



**Inserting external batteries**

- 1** Push the external battery case cover to open it.



- 2** Make sure the correct polarity and insert four AA size batteries. Close the cover.
- 3** Twist the external battery case to UNLOCK direction. Insert the H300 to the system slot of the external battery case.



4 Twist the external battery case to LOCK direction to secure the H300.

5 Connect the external battery case cable located under the case to the 5.0V DC connector of the H300.



6 Push the power button to turn on the external battery case.



**[Note]**

- Press the Battery Check button to check the remaining battery charge.  
Color of the LED indicates amount of the remaining battery charge.  
Green: The battery is well charged  
Red: The battery charge is low  
Off: The battery is fully discharged
- Push the Power button to off to disconnect the external battery link. Even if the external battery is connected, the system is not supplied with the power source.

## ■ Connecting the cradle

1 Insert the product into the cradle.

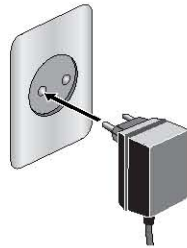


2 Connect the AC adapter to the cradle's 5.0V DC connector.



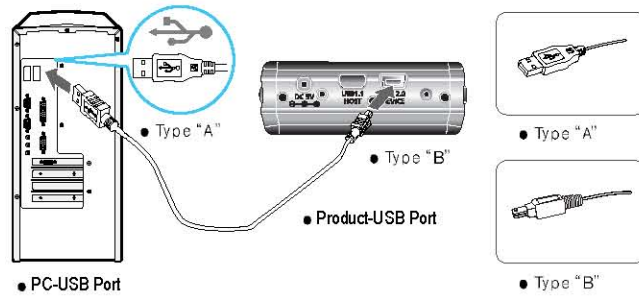
Getting started

3 Connect the AC adapter plug to a power socket.



### Connecting to a PC

1 Connect the product to a PC with the USB cable while the product is turned off.



2 The system LCD displays the battery-charging screen. Press the [Power] button while charging to switch to the PC connection mode.



**[Note]**

• If the USB Charging option in the Control menu under the main menu is set to OFF, the battery will not charge when the system is connected to a PC.

### Connecting the remote controller / earphones

1 Connect the remote controller to the remote controller socket in the system



2 Connect the earphones to the earphone socket of the remote controller.



Getting started

## Connecting external devices

Connect external devices for recording or playback.

### Line-In

Connects external input devices

- 1 Connect the Line-Out or earphone socket of the external device to the Line-In socket of the product with the Line In/Out cable.



- 2 Use the recording feature to record with the desired setting. Please see [Page 44, 4. Useful features - 4. Recording] for details.



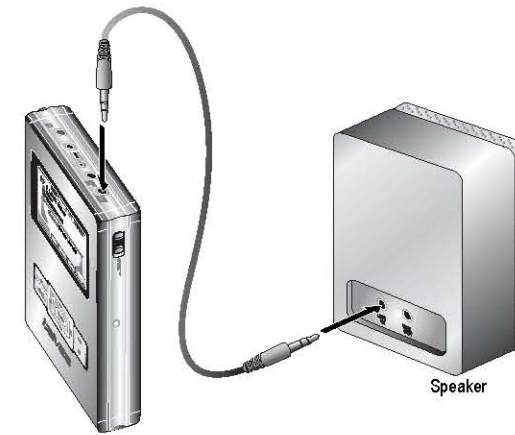
#### [Note]

.To use an external microphone for recording, connect the external microphone cable to the Line-In socket.

### Line-Out

Use external devices such as speakers for output.

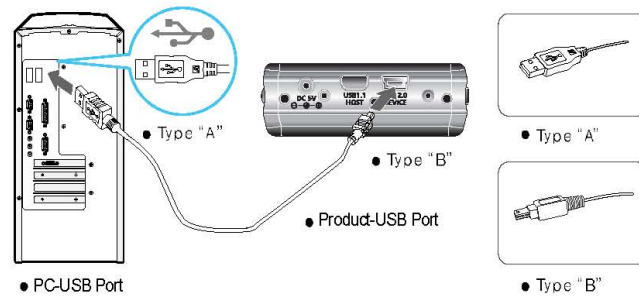
- 1 Connect the Line-In socket of an external device to the Line-Out socket of the product with the Line In/Out cable.




- 2 Play as desired. Please see [Page 39, 4. Useful features - 1. Playing music files] for details.

## Connecting to a PC

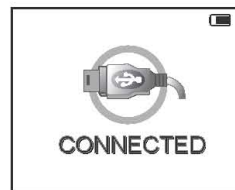
- 1 Turn on the power of the product and the PC.
- 2 Use the USB cable included to connect the product to the PC.



- 3 The  icon is displayed in the PC tray if successfully connected

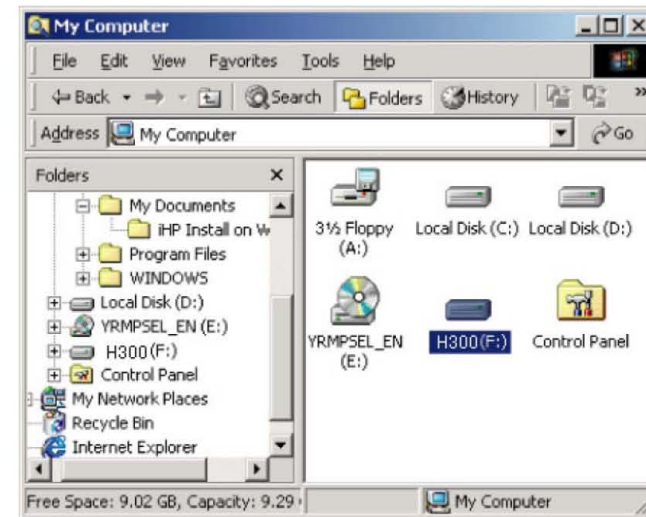


The following screen is displayed in the product LCD.



- 4 Click the Start button then click Programs -> Accessories -> Windows

- 5 Check the new local disk drive is added. The factory default drive name is H300.



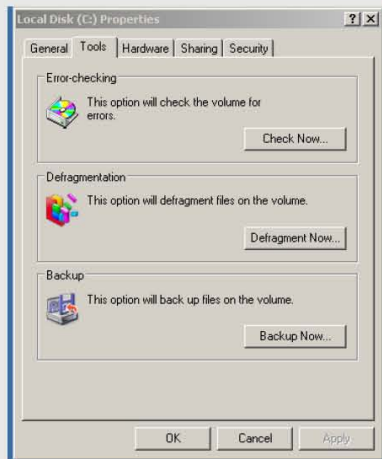
### ⚠ [Warning]

- ▶ Please be careful while the product is connected to a PC with the USB cable for file upload or download. If the PC power is turned off or the USB cable is disconnected while data is being transferred, an HDD error in the product may be generated. In some cases, an error message is displayed: "Total: 0000 Folder(s)".



**[Note]**

- The product is not automatically recognized in the Windows 98 SE operating system. See [Page 31, 2. Getting Started, 3. Installing the software - Installing device driver] to install the device driver.
- The system supports a maximum of 2000 folders and 9999 files.
- If another external device is connected to the PC, connecting the product does not add a second icon to the PC tray. Click the PC tray icon to view information on both devices.
- If an HDD error is detected, use the PC scan disk function to fix the error.
- ⇒ To start scan disk,
  - ① Select the product HDD in Windows Explorer and click with the right mouse button.
  - ② Click the Properties in the popup window.
  - ③ Click the Tools tab in the Properties window.



④ Click the "Check Now" button in the "Check Errors" box

**Disconnecting from the PC**

Disconnect the product from the PC after finishing the desired operation, such as uploading or downloading.

1 Click the icon in the PC tray



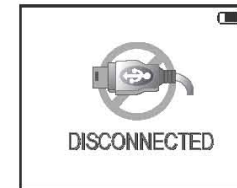
2 Click the following popup message.



3 Click the Confirm button in the hardware safe removal window and physically disconnect the USB cable.



The following message is displayed in the system LCD



**[Note]**

- The tray icon may be hidden in some Windows XP operating system settings. Click the "Display hidden icon" to view the hidden icon.
- Hardware safe removal may not be available while using some applications such as Windows Explorer or Windows Media Player. Please close all applications using the product before the hardware safe removal process.
- In some Windows XP operation system settings, hardware safe removal is temporarily unavailable due to some internal system communication. Please wait and try again.



## Installing the software

### Installing the managing software

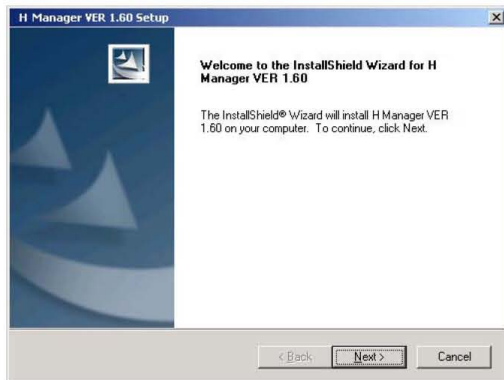
Please use the managing software to control product features such as music information (ID3 Tag)



#### [Note]

- Windows ME, Windows 2000, and Windows XP operating systems support USB 2.0 storage without additional setup. Windows Explorer may be employed to use the product as a portable storage device without installing any other information.
- In the Windows 98 SE operating system however, the managing software is required to use the product as a portable storage device.

- 1 Insert the program installation CD and double click the HManager\HManager1.60.exe file. The following installation screen is displayed.

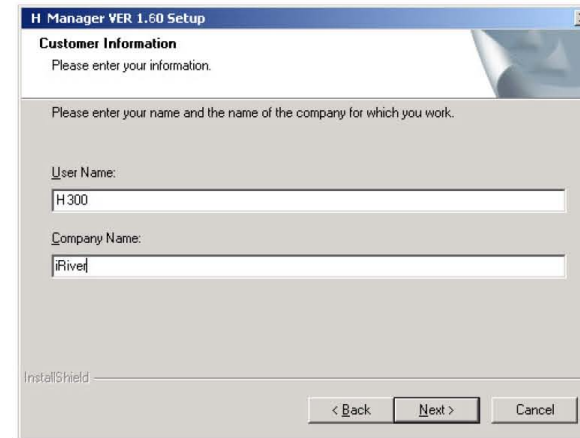


- 2 Click the "Next" button in the installation window

- 3 A message is displayed to disconnect the product from the PC. If the product is connected, disconnect it from the PC and press the "OK" button. The message is displayed even if the product is not connected to the PC.



- 4 Input user information and click the "Next" button



- 5 Select the installation folder and click the "Next" button.

