



# Instruction Manual

## PORTABLE STORAGE DEVICE & MULTI - CODEC JUKE BOX Model iGP-100

**iRiver**  
Model iGP-100



**Firmware Upgradable**

Thank you for your purchase.  
Please read this manual carefully  
before using your new player.

<http://www.iRiverAmerica.com>

<http://www.iRiverAmerica.com>

THIS DEVICE COMPLIES WITH PART 15 OF THE FCC RULES. OPERATION IS SUBJECT TO THE FOLLOWING TWO CONDITIONS:  
(1) THIS DEVICE MAY NOT CAUSE HARMFUL INTERFERENCE, AND  
(2) THIS DEVICE MUST ACCEPT ANY INTERFERENCE, RECEIVED, INCLUDING INTERFERENCE THAT MAY CAUSE UNDESIRE OPERATION.

**NOTE :** This equipment has been tested and found to comply with the limits for a Class B digital device, pursuant to part 15 of the FCC Rules. These limits are designed to provide reasonable protection against harmful interference in a residential installation.

This equipment generates, uses and can radiate radio frequency energy and, if not installed and used in accordance with the instructions, may cause harmful interference to radio communications. However, there is no guarantee that interference will not occur in a particular installation. If this equipment does cause harmful interference to radio or television reception, which can be determined by turning the equipment off and on, the user is encouraged to try to correct the interference by one or more of the following measures :

- Reorient or relocate the receiving antenna.
- Increase the separation between the equipment and receiver.
- Connect the equipment into an outlet on a circuit different from that to which the receiver is connected.
- Consult the dealer or an experienced radio/TV technician for help.

**NOTE:** THE MANUFACTURER IS NOT RESPONSIBLE FOR ANY RADIO OR TV INTERFERENCE CAUSED BY UNAUTHORIZED MODIFICATIONS TO THIS EQUIPMENT. SUCH MODIFICATIONS COULD VOID THE USER'S AUTHORITY TO OPERATE THE EQUIPMENT.

- **Portable Storage Device**  
iGP-100 can be used as a storage device (1.5 GB media).
- **USB 2.0 is supported**  
iGP-100 supports USB 2.0 with maximum transfer speed of 480 Mbit/Sec as well as USB 1.1.
- **Multi-Codec Player**  
Supports MP3, WMA, ASF, and OGG formats as a Multi-Codec player.  
The iGP-100 also supports 44.1 KHz, 32-500Kbps based OGG files.
- **Firmware Upgrade**  
Provides the latest updated features via firmware upgrade.
- **Graphic LCD supporting Multiple Languages**  
iGP-100 comes with a graphic LCD which can support multiple languages, including: English, French, Spanish, German, Italian, other alphabet-oriented fonts, Korean, Japanese (Katakana, Hiragana, Kanji), Chinese (Traditional, Simplified) and others. A total of 38 languages are supported.
- **FM Tuner**  
Auto scanning and station memory functions make it easy for you to enjoy listening to the FM Radio.
- **Supports 6 Equalizer Patterns.**  
Normal, Rock, Jazz, Classic, Ultra Bass, User EQ
- **This player supports 3D Surround Sound developed by SRS Lab.**
- **The player can recognize up to 1000 folders and 5000 files.**
- **Graphic User Interface Menu Support**

- URL : <http://www.iRiverAmerica.com>
- Provides information on our company, products, and customer support information.
- Download the latest Software and Firmware Upgrades
- Register your iRiver product online so that our Customer Service is enabled to provide support as efficiently as possible.
- Contents described in this manual may be changed with out notice.

The information, artwork, text, video, audio, pictures, software and other intellectual property are protected by copyright and international laws.

You may not reproduce, distribute, publicly perform, publicly display, modify or create derivative works of the intellectual property, unless authorized by the appropriate copyright owner(s). iRiver does not encourage any of our customers to use copy-righted Intellectual property illegally by using this product.

iRiver Limited does not assume any responsibility for errors or omissions in this document or make any commitment to update the information contained herein. iRiver is a registered trademark of iRiver Limited in the Republic of Korea and/or other countries and is used under license. All other brand and product names are trademarks of their respective companies or organization. All other product names may be trademarks of the companies with which they are associated.

©1999~2003 iRiver Limited, All rights reserved.

Microsoft Windows Media and the Windows logo are trademarks or registered trademarks of Microsoft Corporation in the United States and /or other countries.

**1. Locating the Controls**

Front View, Side View.....	5
Side View.....	6
LCD Window.....	7

**2. Getting started**

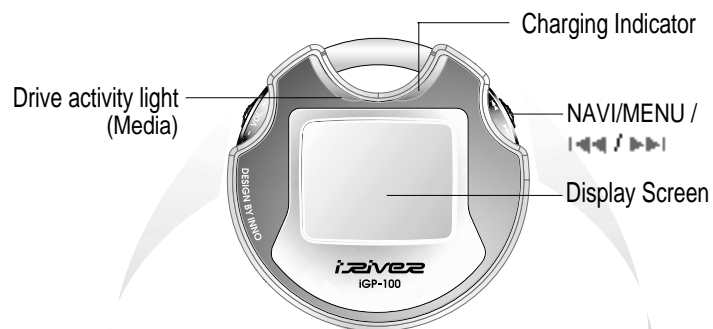
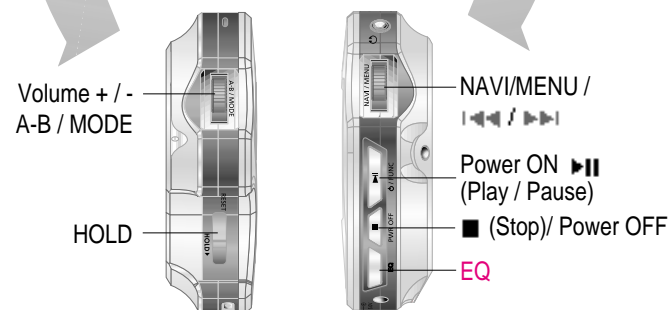
Using AC POWER ADAPTER.....	8
Software Installation.....	9~10
Connecting the iGP to the Host PC.....	10
Installing the iGP Device Driver.....	11~12
Using as a Portable Storage Device.....	13
Disconnecting the iGP from the Host PC.....	14
Listening to Music.....	15~16
Basic Operation.....	17~18

**3. Useful Features**

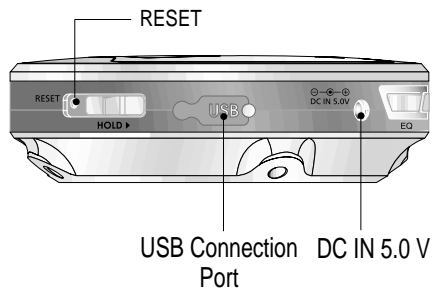
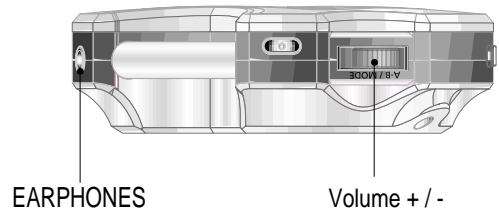
Playback Mode.....	19
Navigation.....	20
Operating the FM Tuner.....	21~23
Playback Mode.....	24
EQ/SRS.....	25
Menu.....	26~33
Using WINAMP Playlist.....	34~35
Firmware Upgrade.....	36

**4. Additional Information**

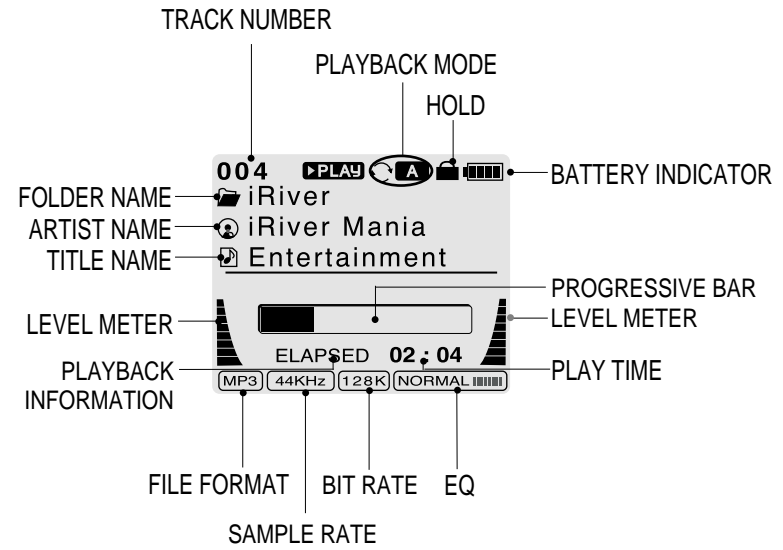
References.....	37
Precautions.....	38
Trouble Shooting.....	39
Accessories.....	40
Product Specifications.....	41
Regulatory Information.....	42

**FRONT VIEW****SIDE VIEW**

SIDE VIEW

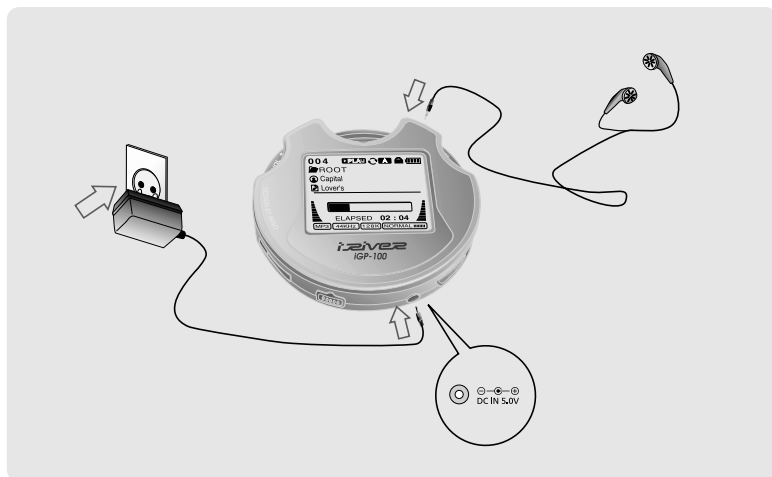


LCD Window



## Using AC POWER ADAPTER

- 1 Use only the AC Power Adapter supplied with the player.  
The AC operating voltage of this player is 100~240V, 50~60Hz.
- 2 Connect the adapter to the 5.0V DC jack on the player and into an AC outlet.



## Recharging Method

- The player will charge automatically when the AC adapter is connected to the player.
- When fully charged, charge indicator light turns off.

Charging : Approx. 2 hours (At full discharge)

Discharging (Playback time) : Approx. 10 hours (At full charge)

\* Playtime is measured under playback of MP3 128Kbps at full charge.

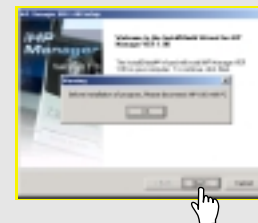
## To install "Program"

Windows ME, Windows 2000 and Windows XP will recognize the iGP as a USB drive automatically and you can use the player with out installing iGP Manager. For Windows 98 SE users, the iGP Manager must be installed for the computer to recognize the player. All users must install iGP Manager to use the Database function.

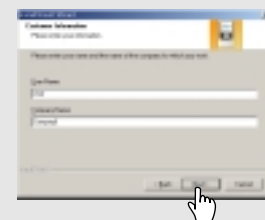
- 1 Insert the installation CD in the PC. Locate and execute the file "iGP-100Manager 1.10.exe". The installation screen will appear.



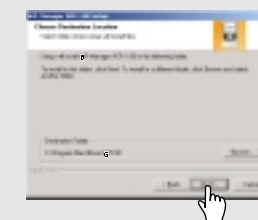
- 2 If the player has been connected to the PC, disconnect it. Click "OK" to install the installation program.



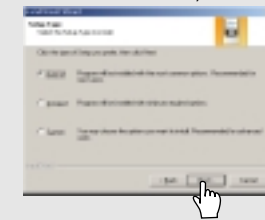
- 3 Enter user information, click "Next".



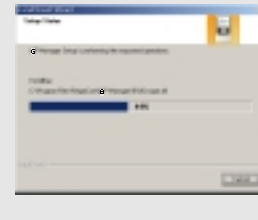
- 4 Select installation folder, click "Next".



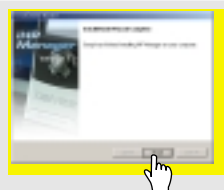
- 5 Select installation type (Typical, Minimal, or Custom), click "Next".



- 6 Installation is progressing.



- 7 Click "Finish".  
The installation is completed.

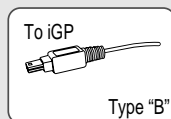
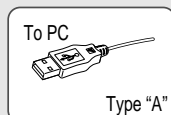
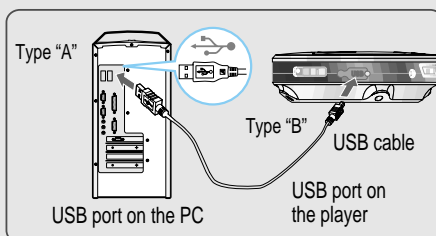


## TO CONNECT THE IGP TO THE HOST PC

- 1 Click to turn on the player.



- 2 Connect the USB cable to the player and the host PC.



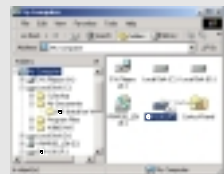
- 3 Windows XP and Windows 2000 will display a "Device Attached" icon.



### Note

- Windows may ask to install a driver for the iGP. Please follow the provided driver installation guide on the following page.

- 4 Once installed, open Windows Explorer and an additional drive should be listed called "iGP-100".



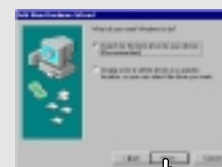
## TO INSTALL THE IGP DEVICE DRIVER AUTOMATICALLY

Complete the driver installation after installing the iGP Manager software.

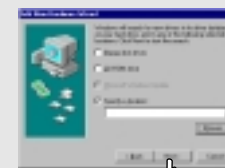
- 1 Connect the player to your PC, Windows will display the "Add New Hardware Wizard". Click Next.



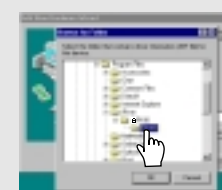
- 2 Chose "Search for the best driver for your device (Recommended)." Click Next.



- 3 Place a checkmark next to "Specify a location" and click Browse.



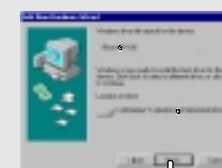
- 4 Locate the following path on your computer. C:\Program Files\iRiver\iGP 100\drivers, click "OK".



- 5 Once the path has been located, Click "Next".



- 6 Click "Next"



- 7 Click "Finish"  
The installation of the Device Driver is complete.



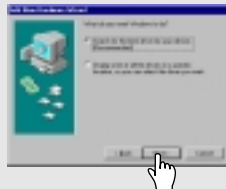
## TO INSTALL THE IGP DEVICE DRIVER MANUALLY

Complete the driver installation after installing the iGP Manager software.

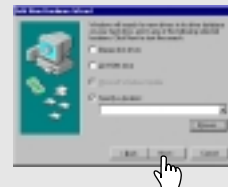
- 1 Connect the player to your PC, Windows will display the "Add New Hardware Wizard." Click Next.



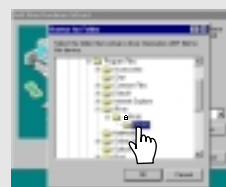
- 2 Chose "Search for the best driver for your device (Recommended)." Click Next.



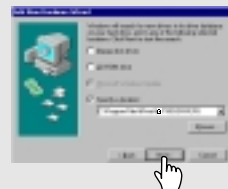
- 3 Place a checkmark next to "Specify a location" and click Browse.



- 4 Locate the following path on your computer. C:\Program Files\iRiver\iGP 100\drivers, click "OK".



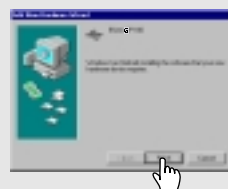
- 5 Once the path has been located, Click "Next".



- 6 Click "Next"



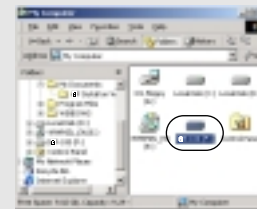
- 7 Click "Finish"  
The installation of the Device Driver is complete.



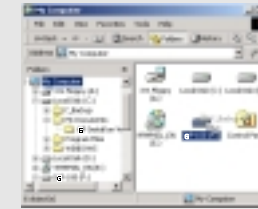
## TO USE AS A PORTABLE STORAGE DEVICE

If the player is not connected to the host PC, connect it to the host PC. (Refer to page 10)

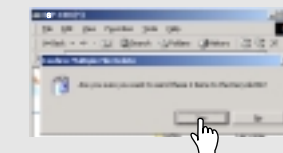
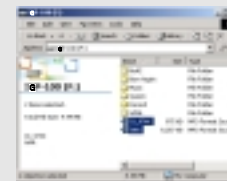
- 1 The player will show up as a new drive in Windows Explorer.



- 2 Click and Drag files from the PC to the iGP player.



- 3 To delete files or folders from the iGP, select the files (folders) to be deleted and press "Delete" on the keyboard. Click "Yes" when asked to confirm the delete.



The iGP operates just like an additional hard drive in Windows Explorer. Files can be copied, deleted, etc.

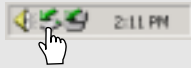
### ⚠ Note

- When the iGP is attached to a computer for an extended period of time, be sure to plug in the AC adapter. Low batteries can prevent the proper functioning of the iGP.



## TO DISCONNECT THE PLAYER FROM THE HOST PC

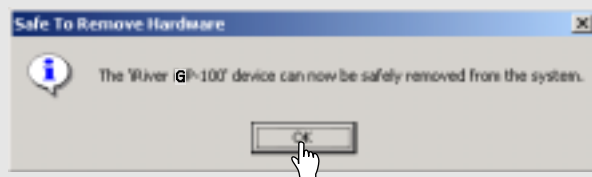
- 1 Click the 'Safely Remove Hardware' icon in the System Tray.



- 2 Click "Stop iRiver iGP-100-Driver(X)" or "Safely Remove CORNICE". (Where X is the drive letter assigned to the iGP)



- 3 Click 'OK' after confirming the "Safe To Remove Hardware" message.



- 4 Disconnect the USB cable between the iGP and host PC.

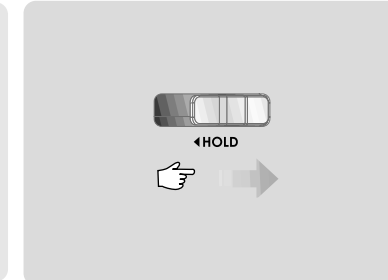
### ⚠ Caution

- Do not disconnect the player while the drive is in use. Complete any file copying or DB creation activity before attempting to disconnect the iGP from your PC.

- 1 Connect the headphones as shown below.



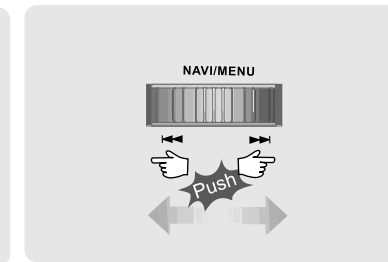
- 2 Switch the HOLD button to "off".



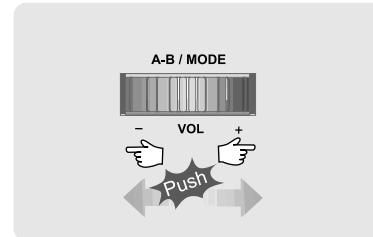
- 3 Press the PLAY/STOP button to turn on the player. Press it again to play.



- 4 To select music  
 ⏮: To select previous track  
 ⏭: To select next track



- 5 To adjust the volume  
 |+| : To increase volume  
 |-| : To decrease volume



### NOTE

- When "Hold" is ON, the buttons on the player will not function.
- When the player is stopped, it will shut off according to the "Stop Power Off" setting in the Menu. (Refer to [page 31](#).)

■ Power ON



■ To turn off the player



■ To play / pause



■ To fast forward



■ To stop



■ To fast reverse



■ To play next track



■ To play previous track

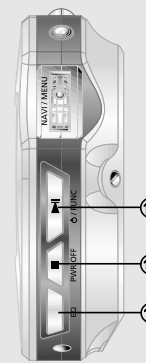
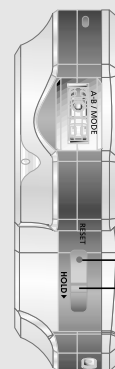
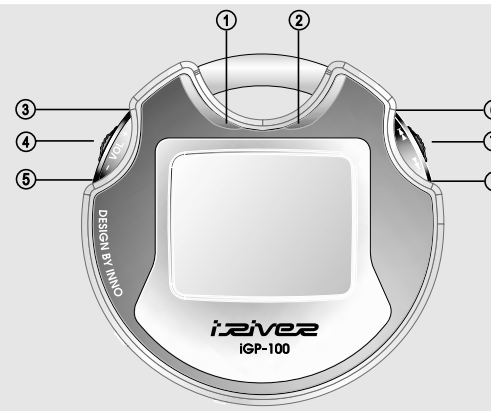


■ To turn off the player

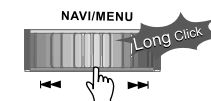
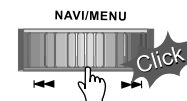


File Format displayed as below

- MP3 ▶ MP3      WMA ▶ WMA
- ASF ▶ ASF      OGG ▶ OGG



● To activate Navigation    ● To activate Menu

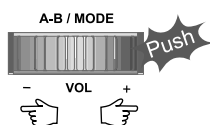


1. Operating light is illuminated when the iGP-100 is turned on.
2. Charging light is illuminated during charging.
3. To increase volume.
4. A-B repeat / MODE :
5. To decrease volume.
6. To select the previous track.
7. To select NAVI/MENU function or search files.
8. To select the next track.
9. Reset button : To initialize the iGP-100.
10. HOLD: Enable or disable HOLD function.  
Buttons do not work when HOLD is enabled.
11. To start or pause playback
12. To stop playback or turn off.
13. EQ Mode

## Basic Operation



- To adjust the volume**  
 Press + on volume button to increase volume and press – on button to decrease volume.



File playback → FM receiving



(Refer to page 21)

Selecting FM Mode when listening FM Stereo → Mono



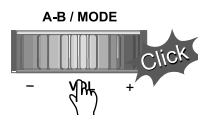
## NAVIGATION

- Press NAVI/MENU button and find the desired track by pressing **⏪** or **⏩**, NAVI/MENU button.
- There are two methods using ID3 Tag and PATH/NAME of File on NAVIGATION. Refer to page 20 for details.

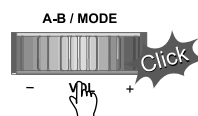
## Interval Repeat

Select interval to play repeatedly.

Press A-B button once to select the beginning <A> Point.



Press A-B button again to select the ending <B> Point.



- A-B interval will be repeated.

Navigation mode is useful for quickly searching your files by using file name.

## 1. Navigation

- 1 Press the NAVI/MENU button to display the list of audio tracks. The current track will also be displayed.



- 2 Push the NAVI/MENU switch toward  $\lll$  or  $\ggg$  to select a track or folder to play.



- 3 Press the NAVI/MENU button to play the selected track or display the contents of a folder.



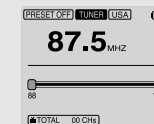
- Once you select a folder, choose the song you wish to listen to and press the NAVI/MENU button.
- Push the NAVI/MENU switch toward  $\lll$  to go the upper folder or the previous menu.

## OPERATING THE FM TUNER

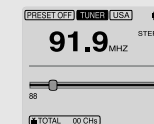
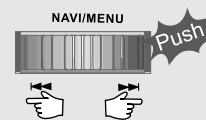
- While playing an Audio File, Press and hold the PLAY/PAUSE button.



The FM function picture displays on the LCD. ▶



- Push the  $\lll$  or  $\ggg$  button to select FM frequency.

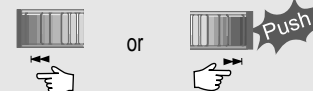


- Press the STEREO/PLAY/PAUSE button to select Stereo/Mono.

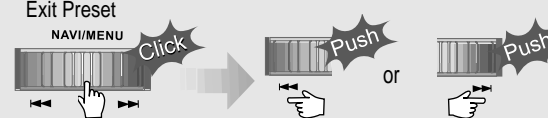


## SELECTING FREQUENCY

- 1 To change frequency, push the  $\lll$  or  $\ggg$  switch to the left or the right.



- 2 Auto Scan function: To select a station to store, press the NAVI/MENU button to exit Preset mode and find a station by using  $\lll$  or  $\ggg$ .  
Exit Preset

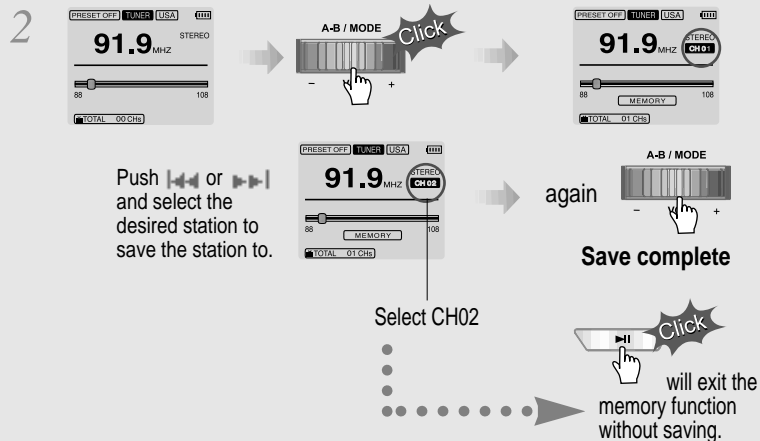


- 3 PRESET Mode : To select a station saved in memory, press the NAVI/MENU button to enter Preset mode. Select a stored station by using the  $\lll$  or  $\ggg$  switch.



### MEMORY FUNCTION (Save stations manually)

1 Select a station by pushing the ◀◀ or ▶▶ switch to the left or the right.



3 Up to 20 stations can be stored.

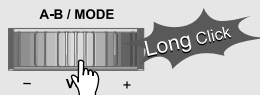
### AUTO MEMORY FUNCTION (Save stations automatically)

Automatically select station and save them in sequential order.

1 Press the NAVI/MENU button to exit the Preset mode.



2 Press and hold the A-B/MODE button.

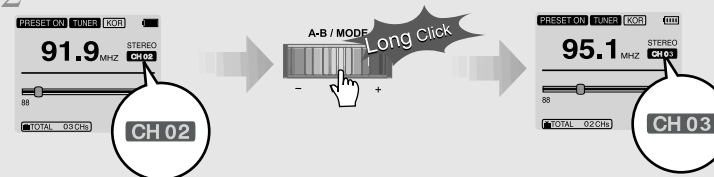


▶ **Note:** The Auto Memory Function may not function well in weak transmission areas.

### MEMORY DELETE FUNCTION (Delete saved channels)

1 Select the channel to be deleted at preset mode.

2 Press and hold the MEMORY button.



- The next channel will appear when channel deletion is completed. Push the MEMORY button if you want to delete the next channel also.

- ▶ FM Tuner reception may vary in different areas.
- ▶ While in Preset mode, Auto Scan and Auto Memory functions are not available.
- ▶ When the player does not have any preset channels, EMPTY will be blinking at preset mode.

The iGP-100 has various playback modes.  
Please refer to the function controls (see page 32 for details) for user-defined configurations.



When the A-B/MODE button is pushed, the playback mode changes and an icon indicating the mode is displayed.

### REPEAT

	Play a single track repeatedly. Press  or  to play the previous or next track.
	Play all tracks in the folder and stop.
	Play all tracks in the folder repeatedly.
	Play all tracks in the player repeatedly.

### SHUFFLE

SFL	Randomly play all tracks in the player and stop.
SFL	Play a single track repeatedly. Press  or  to switch to a new random track.
SFL	Randomly play all tracks in the folder and stop. Press  or  to switch to a new random folder.
SFL	Randomly play all tracks in the folder repeatedly.
SFL	Randomly play all tracks in the player repeatedly.

### INTRO

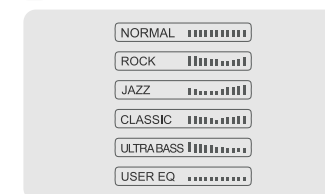
	<b>INTRO:</b> Play beginning 10 seconds of each track in sequential order.
	<b>INTRO HIGHLIGHT:</b> Plays 10 seconds from 1 minute into each track in sequential order. You can set this function in the MENU function.

## EQ / SRS

- You can change the EQ to match your music style.
  - Normal / Rock / Jazz / Classic / Ultra Bass / User EQ
  - SRS / TruBass / WOW (Preset) / WOW (User)
- Whenever the EQ button is pressed, EQ changes as the following order : (Normal → Rock → Jazz → Classic → Ubass → User EQ → SRS → TruBass → WOW(Preset) → WOW(User))
- You can set the EQ function by using Function Menu. Refer to page 32~33.



### EQ

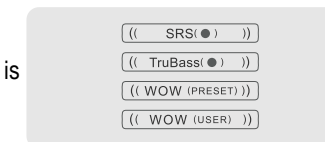


- EQ (SRS Off) : SRS is deactivated and EQ set by user is operated.  
(Normal, Rock, Jazz, Classic, UBass, User EQ)

### SRS

#### 1) SRS Selection

- SRS(): SRS is activated.
- TruBass : TruBass is activated.
- WOW (Preset) : WOW (Preset) is operated as a preset setting organized by SRS +TruBass +Focus function.
- WOW (User) : WOW (User) is operated as a setting of SRS +TruBass +Focus adjusted in the SRS Settings on the menu by user.



#### 2) SRS Settings (The defaults is 5, 7, High, 60Hz)

- SRS(): SRS range can be set from 1 to 10.
- TruBass : TruBass range can be set from 1 to 10.
- Focus : The fineness of the sound can be selected. (Low, High)
- Boost : You can set the Bass according to the using earphones or the Bass. (40, 60, 100, 150, 200, 250, 300, 400Hz)

\* SRS() is the trade mark of SRS Labs. Inc.

#### What is SRS()?.....

SRS-WOW is simulated 3D surround sound developed by SRS Lab and is composed by SRS, TruBass, Focus, and WOW.

## CONFIGURATION



Function Control is subject to change with different firmware versions. Users can configure their own settings.

### General

- ☐ Beep Volume
- ☐ Resume
- ☐ Fade In
- ☐ Language
- ☐ Tuner Region
- ☐ Load Default
- ☐ Firmware Upgrade

### Display

- ☐ Back Light (Battery)
- ☐ Back Light (Adapter)
- ☐ LCD Contrast(Main)
- ☐ Tag Information
- ☐ Time

### Timer

- ☐ Sleep Timer
- ☐ Stop Power Off

### Control

- ☐ Scan Speed
- ☐ Scroll Type
- ☐ Fast Skip

### Mode

- ☐ Repeat
- ☐ Shuffle
- ☐ Intro

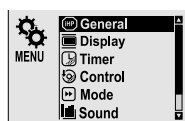
### Sound

- ☐ Sound Balance
- ☐ EQ
- ☐ Bass Boost
- ☐ Treble Boost
- ☐ SRS (M)
- ☐ SRS Settings

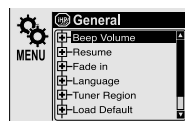
## MENU OPERATION

1 Press and hold the NAVI/MENU button to display the menu system. It is composed of 6 main menus with sub-menus.

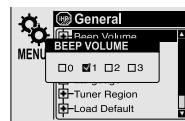
#### MAIN MENU



#### SUB MENU

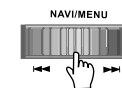


#### Window for SUB MENU SETTING

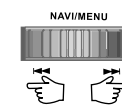
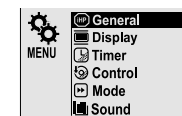


2 When you select a sub menu, you can set your preference to be displayed.

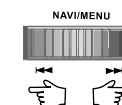
### Scroll between Menu



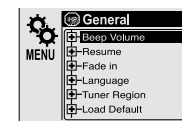
Press and hold the NAVI/MENU button to display the main menus. Push the **◀◀**, **▶▶** to scroll between main menus, press the NAVI/MENU button to select sub menu.



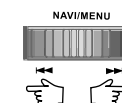
### From Main Menu to Sub Menu



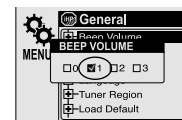
Use the **◀◀**, **▶▶** to select a sub menu, push the NAVI/MENU button to display the contents of that sub menu.



### Change Settings by user



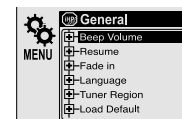
Use the **◀◀**, **▶▶** to change the settings. Push NAVI/MENU to save the setting.



### Exit Sub Menu



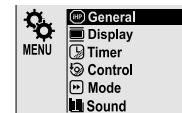
Press STOP(■) button to display the initial setting menu.



### Exit Main Menu



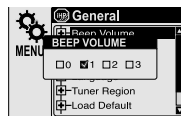
Press STOP(■) button at the initial setting menu to exit Function Control Mode.



## GENERAL

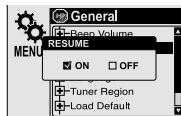
### ■ BEEP VOLUME

Set beep volume level to 0 / 1 / 2 / 3 step.



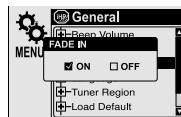
### ■ RESUME

When ON, player resumes to previous place in song after STOP or Power OFF.



### ■ FADE IN

When activated, volume increases gradually at playback mode to prevent sudden loudness.



### ■ LANGUAGE (Supports 38 languages)

Song title and ID3 tag information is dependent on the version of the PC operating system that was used to create it. (For example, if a MP3 files is created in a Korean version of Windows, the language setting should be Korean for proper title display)



### ■ TUNER REGION

You can set the FM frequency and step according to your area.

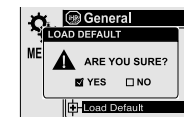
Set them to fit your region to receive FM Radio.

If tuner region is newly set, the old preset stations is deleted.



### ■ LOAD DEFAULT VALUE

Initialize all settings to original factory setting.



### ■ FIRMWARE UPGRADE

You can upgrade the player's Firmware.  
Refer to [page 36](#) for details.

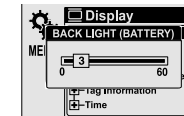


## DISPLAY

### ■ BACK LIGHT (Battery)

You can adjust the time that the Backlight stays on while the player is operated using the battery built in the player.

(Time range can be made from 1~60 sec.)

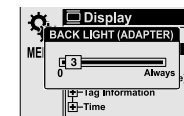


### ■ BACK LIGHT (Adapter)

You can adjust the time that the Backlight stays on while the player is operated using AC adapter.

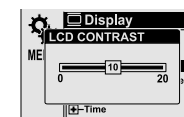
(Time range can be made from 1~59 sec.)

If 60 sec is selected, backlight is always on.



### ■ LCD CONTRAST

Adjust LCD contrast of the player.





### ■ TAG INFORMATION

ON : Displays track with ID3 tag information and you can change the configuration of Tag information.  
 OFF : Displays track with file name.

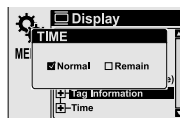
The change will take affect when the next track is played.



### ■ TIME

Normal : display elapsed time.  
 Remain : display remaining time.

**NOTE** : In case of VBR MP3 file, the remaining time may display inaccurately.



## TIMER (Set Auto Power Off)

### ■ SLEEP POWER OFF

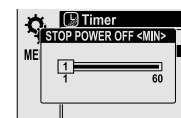
Automatically power off after fixed time  
 (Time range can be set from 1 to 99 minutes).

▶ When the power is off, the sleep power off setting goes back to 0.



### ■ STOP POWER OFF

Automatically turns power off at stop mode.  
 (Time range can be made from 1~60 minutes.)



## CONTROL

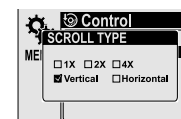
### ■ SCAN SPEED

The fast scan speed can range from  
 OFF / 1x / 2x / 4x.



### ■ SCROLL TYPE

Adjust scroll speed by  
 1x / 2x / 4x / Vertical / Horizontal.  
 Vertical : The scroll goes up and down  
 Horizontal : The scroll goes from the left to  
 the right.



### ■ FAST SKIP

OFF : Disables the skip feature.  
 10: Plays the previous 10th or the next 10th song.  
 Directory: Jump to the Previous/Next directory.  
 ⏮ and ⏭ button can be used for this setting.



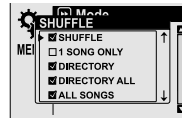
## MODE (PLAYBACK MODE)

### REPEAT MODE / SHUFFLE MODE

You can select a file or directory to listen to repeatedly.



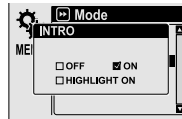
You can play the selected mode simultaneously by setting REPEAT MODE / SHUFFLE MODE respectively.  
(Refer to [page 24](#) for details about each mode)



### INTRO MODE

**INTRO MODE** plays the beginning 10 seconds of each track.

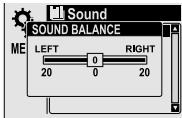
**INTRO HIGHLIGHT** plays 10 seconds from 1 minute into each track in sequential order.



## SOUND

### SOUND BALANCE

Balance your sound to the right or left or keep it in the center according to your preference. When Sound Balance bar is moved to L (Left, 20), the sound outputs at the left earphone. When the bar is moved to R (Right, 20) the sound outputs at the right earphone. The default value is 0 the sound outputs the same level at both earphones.

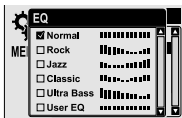


### EQ

You can select 6 EQ.

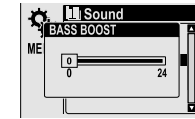
EQ is selected as follows :

Normal → Rock → Jazz → Classic → Ultra Bass → User EQ



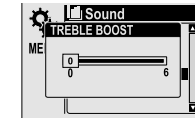
### BASS BOOST

Bass Boost level is from 0 to 24dB by 2 step.  
The value set on the BASS BOOST is applied to USER EQ.



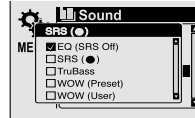
### TREBLE BOOST

Treble Boost level is from 0 to 6dB by 2 step.  
The value set on the TREBLE BOOST is applied to USER EQ.



### SRS

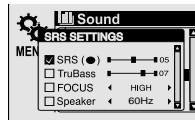
You can enjoy EQ or 4 mode surround sound.  
EQ (SRS OFF) → SRS → TruBass → WOW (Preset) → WOW (User)



### SRS Settings

You can enjoy various surround sound by setting the sound levels.

SRS : 1~10  
TruBass : 1~10  
Focus : Low, High  
Boost : 40Hz/ 60Hz/ 100Hz/ 150Hz/  
200Hz/ 250Hz/ 300Hz/ 400Hz



### NOTE

- To adjust the USER EQ, set the BASS BOOST and TREBLE BOOST.
- When you set the BASS BOOST or TREBLE BOOST, the EQ is automatically set to USER EQ.

## HOW TO USE WINAMP PLAYLIST

- 1 Make a PLAYLIST (\* .M3U) using WINAMP.  
 Note : WINAMP software is not included with the player.

▼ Winamp execution picture



1. Launch WINAMP and add songs to make a list.

2. Click "LIST OPTS" located on the right bottom and click "SAVE LIST"

▲ Click the SAVE LIST button.




3. Name the file name (ex: iriver.m3u) and click "SAVE" to save the list.

- 2 Save to the player with the \* .M3U and the files added to the playlist.

- 3 Press A-B/MODE button at stop mode and LCD displays a list of M3U playlist files on the player. You can find the playlist you want to play by using the ▲, ▼ button and the ⏪ or ⏩ button.



4

Press NAVI/MENU button or  button to play the tracks in the order of the playlist.

PL icon indicates PLAY LIST. ▶



**NOTE** A total of 200 playlists can be recognized.



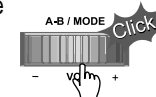
### RESERVATION FUNCTION

Press NAVI/MENU button during playback to select the next song to be played, then press A-B/MODE button to queue that song.

Press NAVI/MENU button during playback,



After selecting the song to play next,



## Firmware Upgradable

Upgrade your firmware at [www.iriveramerica.com](http://www.iriveramerica.com).

### What is FIRMWARE?

It is the operating system that works in the iGP-100. iRiver provides you with the latest and best features through Firmware Upgrade. Visit [www.iriveramerica.com](http://www.iriveramerica.com) to upgrade your Firmware.

### How to UPGRADE?

1. Download the latest firmware upgrade file from [www.iriveramerica.com](http://www.iriveramerica.com)
2. Extract the file and save it to the ROOT of the iGP-100.
3. Connect the AC adapter to the iGP-100.  
(Caution: Only upgrade the firmware on the iGP-100 with the AC adapter connected.)
4. Select the Firmware Upgrade on the MENU.
5. Click the NAVI/MENU button after selecting "YES" on the Alert window.
6. The LCD will display "Firmware Upgrading..." while the firmware file is loaded.



7. Do not turn the player off or disconnect the player from the PC until the Firmware Upgrading is done. When the power goes off automatically, the upgrade is done. After turning the player on, confirm the Firmware Upgraded operating.

- Supported file types will have the extension MP3, OGG, WMA and ASF.
- Tracks with damaged or corrupted parts are skipped or forwarded to next track.
- Folders and files are sorted in alphabetical order.
- Track information is displayed as either filename or ID3 TAG information.
- Physical shock can cause bad sectors on the media inside the iGP-100. This can be recovered using Windows Scandisk.

## SAFETY

- **Avoid dropping or impacting the player.**  
The player is designed to operate while walking or running, but dropping or excessively impacting the player may cause damage.
- **Avoid contacting the player with water.**  
Damage to the internal parts of the player may occur if the player comes into contact with water. If your player gets wet, dry the outside with a soft cloth as soon as possible.
- Do not leave the player in a location near heat sources, or in a place subject to direct sunlight, excessive dust or sand, moisture, rain, mechanical shock, unlevelled surface, or in a car with its windows closed.
- **Keep the player away from a material with strong magnetic forces. This can cause malfunction in the Hard Drive.**
- If the iGP is disconnected suddenly during file transfer, it may cause data loss and an error "Total of 0000 Folder(s)" may display on the iGP. If this happens, attach the iGP to your PC and run the Windows Scan Disk utility.

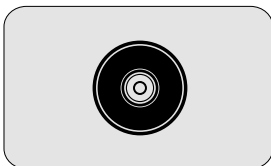
## ON HEADPHONES AND EARPHONES

- **Road Safety**  
Do not use headphones/earphones while driving, cycling, or operating any motorized vehicle. It may create a traffic hazard and is illegal in some areas. It can also be potentially dangerous to play your headset at high volume while walking, especially at pedestrian crossings. You should exercise extreme caution or discontinue use in potentially hazardous situations.
- **Preventing hearing damage**  
Avoid using headphones/earphones at high volume. Hearing experts advise against listening to continuous, loud and extended play. If you experience a ringing in your ears, reduce volume or discontinue use.
- **Consideration for others**  
Keep the volume at a moderate level. This will allow you to hear outside sound and to be considerate of the people around you.

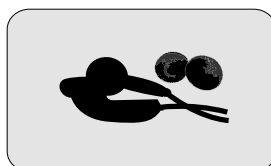
- Should any problem persist after you have checked these symptoms, consult your iRiver dealer or contact support at [iRiverAmerica.com](http://iRiverAmerica.com).

No Power	<ul style="list-style-type: none"> <li>● Check whether the battery is discharged. Check the operation after connecting AC Adapter.</li> </ul>
No sound is heard from the player or distortion is heard during playback.	<ul style="list-style-type: none"> <li>● Check whether VOLUME is set to "0". Connect the remote control / earphone plug firmly.</li> <li>● Check whether the plug is dirty (clean the plug with a dry and soft cloth).</li> <li>● Corrupted Audio file may have a noise or sound cut off.</li> </ul>
Characters in LCD are corrupted.	<ul style="list-style-type: none"> <li>● Check out Menu ▸ General ▸ Language and confirm whether the right language has been selected.(Refer to <a href="#">page 28</a>)</li> </ul>
Poor FM Reception.	<ul style="list-style-type: none"> <li>● Adjust the position of the player and earphones.</li> <li>● Turn off the power of other electronic devices near the player.</li> <li>● The headphone cord functions as the antenna, they must be plugged in for best reception.</li> </ul>
Failed download of a file to the player	<ul style="list-style-type: none"> <li>● Check the connection between your computer and the player to ensure that the cable is secure.</li> <li>● Check the condition of the battery.</li> <li>● Check the operation after connecting AC Adapter.</li> </ul>

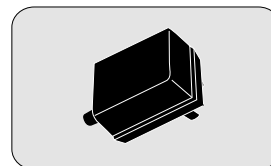
## 1 Installation CD



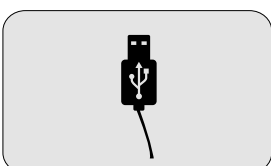
## 2 Headphones and foam covers

3 User Manual/  
Warranty card

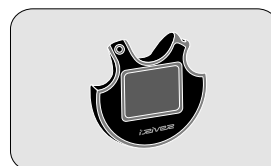
## 4 AC Adapter



## 5 USB Cable



## 6 Carrying Case



\* Accessories subject to change without notice and may vary from image shown.

Category	Item	Specifications
Audio	Frequency/Range	20Hz~20KHz
	Headphone output	20mW(L) +20mW(R) at 16 $\Omega$ Max. Volume
	S/N ratio	90dB(L), 90dB(R) (MP3)
	Frequency Characteristics	$\pm$ 2dB
Audio (FM TUNER)	No. of Channels	STEREO(L+R)
	FM Frequency range	87.5MHz~108MHz
	Headphone Output	20mW(L) +20mW(R) at 16 $\Omega$ Max. Volume
	S/N ratio	50dB
File Support	Antenna	Headphone/Earphone-Cord Antenna
	File TYPE	MPEG 1/2/2.5 Layer 3, Ogg Vorbis, WMA , ASF
	Bit Rate	32Kbps ~ 320Kbps (Ogg : 32Kbps~ 500Kbps, 44.1KHz)
Power Supply	Tag	ID3 V1 , ID3 V2 2.0, ID3 V2 3.0
	AC Adapter	DC 5V , 2A
General	Dimension	Approx. 60(W) x 19(D) x 105(H) mm
	Weight	Approx. 160 g
	Operational Temperature	0 $^{\circ}$ C ~ 40 $^{\circ}$ C
Max. Playtime	MP3 / WMA / ASF	Approx. 16 hours

## Federal Communications Commission (FCC)

The device manufactured and found to comply with limits for a Class B computing device according to the specifications in FCC rules Part 15. Operation is subject to the following two conditions;

1. This device may not cause harmful interference, and
2. This device must accept any interference received, including interference that may cause undesired operation.
3. If your device needs repairs, you must arrange for the manufacturer to make them if you are to keep the device's FCC registration valid.

This equipment, like other electronic equipment, generates and uses radio frequency energy. If not installed and used according to the instructions in this manual, this equipment may cause interference with your radio and television reception.

If you think this equipment is causing interference with your radio or television reception, try turning the equipment off and on. If the interference problems stop when the equipment is switched off, then the equipment is probably causing the interference. You may be able to correct the problem by doing one or more of the following:

- Adjust the position of the radio or TV antenna
- Move away the device from the radio or TV

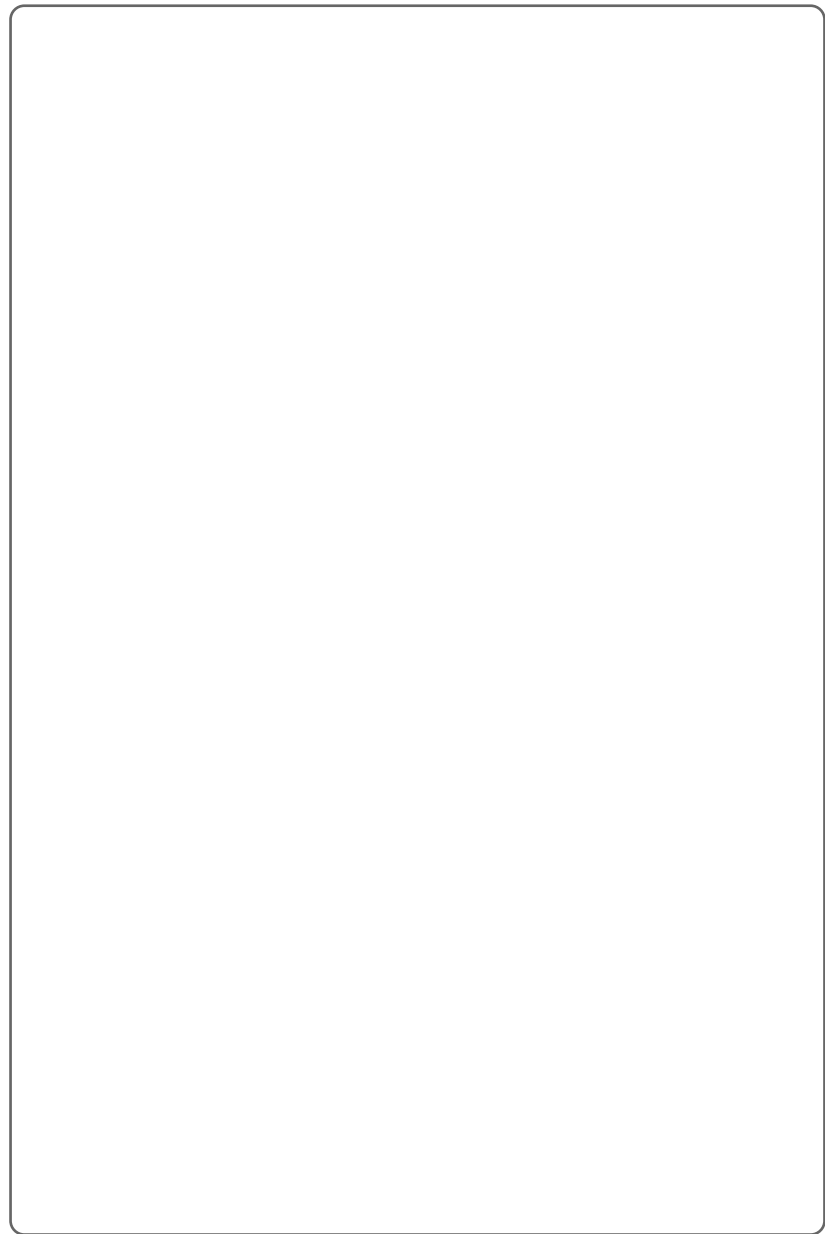
If necessary, consult your dealer or an experienced radio or television technician. You may find this booklet helpful: "How to Identify and Resolve Radio and TV Interference Problems" (Stock No. 004-000-00345-4), prepared by the FCC and available from the U.S Government Printing Office, Washington, DC 20402. See individual devices FCC ID and registration numbers.

## For customers in Europe

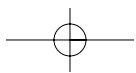
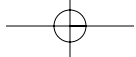


The CE mark on the player is valid only for products marketed in the European Union.

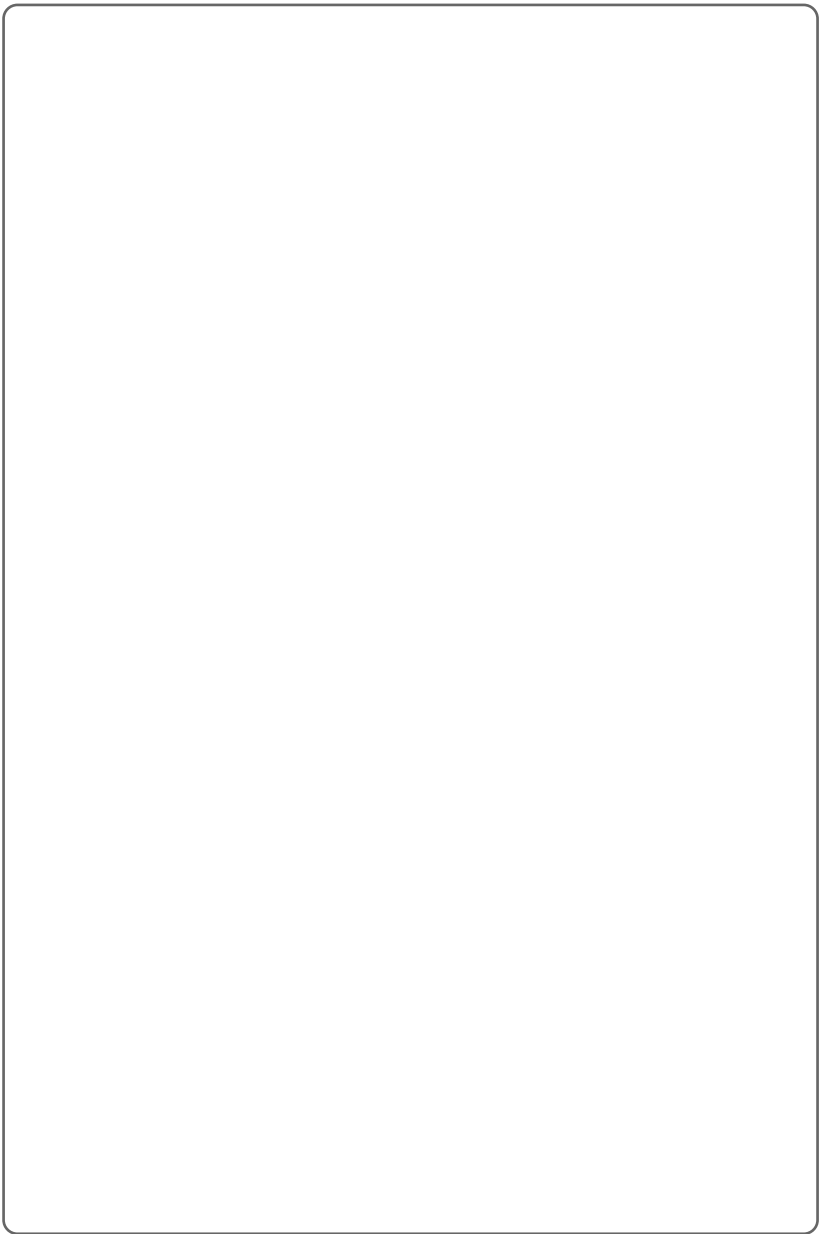
MEMO



44



MEMO



45

