

MP3
DIGITAL AUDIO

FM
TUNER

Plays
Windows
Media™

Instruction Manual

**PORTABLE STORAGE DEVICE
& MULTI - CODEC JUKE BOX**
Model iHP-100

iRiver
Model iHP-100

iRiver Limited
<http://www.iRiver.co.kr>

iRiver



Firmware Upgradable

Thank you for your purchase.
Please read this manual carefully
before using your new player.

iRiver Limited
<http://www.iRiver.com>

THIS DEVICE COMPLIES WITH PART 15 OF THE FCC RULES. OPERATION IS SUBJECT TO THE FOLLOWING TWO CONDITIONS:
(1) THIS DEVICES MAY NOT CAUSE HARMFUL INTERFERENCE, AND
(2) THIS DEVICE MUST ACCEPT ANY INTERFERENCE, RECEIVED, INCLUDING INTERFERENCE THAT MAY CAUSE UNDESIREED OPERATION.

Note : This equipment has been tested and found to comply with the limits for a Class B digital device, pursuant to part 15 of the FCC Rules. These limits are designed to provide reasonable protection against harmful interference in a residential installation.

This equipment generates, uses and can radiate radio frequency energy and, if not installed and used in accordance with the instructions, may cause harmful interference to radio communications. However, there is no guarantee that interference will not occur in a particular installation. If this equipment does cause harmful interference to radio or television reception, which can be determined by turning the equipment off and on, the user is encouraged to try to correct the interference by one or more of the following measures :

- Reorient or relocate the receiving antenna.
- Increase the separation between the equipment and receiver.
- Connect the equipment into an outlet on a circuit different from that to which the receiver is connected.
- Consult the dealer or an experienced radio/TV technician for help.

NOTE: THE MANUFACTURER IS NOT RESPONSIBLE FOR ANY RADIO OR TV INTERFERENCE CAUSED BY UNAUTHORIZED MODIFICATIONS TO THIS EQUIPMENT. SUCH MODIFICATIONS COULD VOID THE USER'S AUTHORITY TO OPERATE THE EQUIPMENT.

- **Portable Storage Device**
IHP-100 can be used as the storage device with 10GB capacity.
- **USB 2.0 is supported**
IHP-100 is the storage supporting USB 2.0 Interface which maximum transferring speed is 480 MBit/Sec.
- **Multi-Codec Player**
Supports MP3, WMA and ASF WAV format as multi-Codec player.
WAV file only support 44.1KHz / 16 Bit.
- **Firmware Upgrade**
Provides the latest updated features via firmware upgrade.
New formats such as OGG, AAC, MP3 Pro and etc can be supported in the future with a simple upgrade method. Player features such as add on, modification, and continuous improvement of the player are always provided.
- **Graphic LCD supporting Multiple Languages**
A total of 38 languages of 37 countries are supported.
- **FM Tuner**
Auto scanning and frequency memory function make it easy for you to enjoy listening to the FM Radio.
- **This player supports 6 Equalizer Patterns.**
Normal, Rock, Jazz, Classic, Ultra Bass, User EQ
- **Easy Navigation**
The simple navigation with tree configuration makes it easy to find or save any song.
- **Total 1000 folders and 5000 tracks within the player can be recognized.**
- **Graphic User Interface Menu Support**
- **FM recording, Voice recording and recording(Line-In/Optical In) from an external audio equipment is supported.**
When voice recording, recording level is automatically controlled at voice recording mode.
- **Line-Out / Optical-Out function is supported**

- URL : <http://www.iRiver.com>
- Provides information on our company, products, and email addresses for support.
- Unique feature of "Firmware (system software) Upgrade" is available for download on our site. The Firmware Upgrade provides new features as well as enhancements to current features.
- Register your iRiver product online so that our Customer Service is enabled to provide support as efficiently as possible.
- Contents described in this manual may be changed to improve or any specification without notice.

소프트웨어, 음원, 영상물 등 저작권이 있는 콘텐츠들은 저작권법 등의 관련 법규에 의거하여 저작권이 보호됩니다. 본 제품을 이용하여 저작권을 가진 콘텐츠를 무단 복제/ 배포할 경우, 법적인 책임은 사용자에게 있습니다.

iRiver Limited does not assume any responsibility for errors or omissions in this document or make any commitment to update the information contained herein. iRiver is a registered trademark of iRiver Limited in the Republic of Korea and/or other countries and is used under license. All other brand and product names are trademarks of their respective companies or organization. All other product names may be trademarks of the companies with which they are associated.

©1999~2003 iRiver Limited, All right reserved

▶ Microsoft Windows Media and the Windows logo are trademarks or registered trademarks of Microsoft Corporation in the United States and /or other countries.

1. Locating the Controls

Front View, Side View.....	5
Up/ Down Side, LCD Window.....	6
Remote Control.....	7

2. Getting started

Using AC POWER ADAPTER.....	8
Software Installation.....	9
Connecting the iHP-100 to the Host PC.....	10
Installing the iHP-100 Device Driver.....	11
Using as a Portable Storage.....	12
Disconnecting the iHP-100 to the Host PC.....	13
Listening to Music.....	14~15
Basic Operation.....	16~19

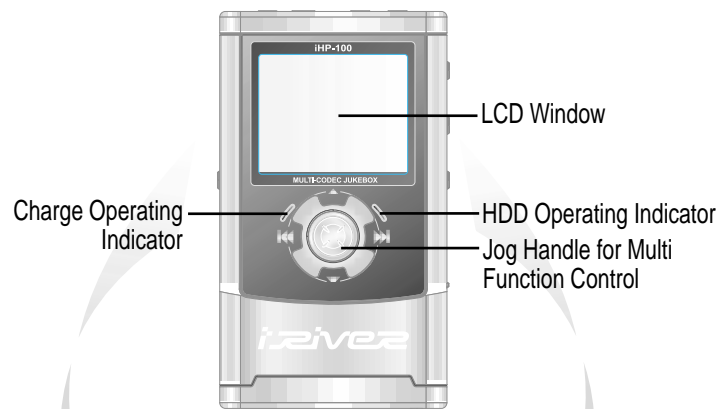
3. Useful Features

Navigation Mode / Menu / Mode.....	19
Playback Mode.....	20
Navigation.....	21~23
Upgrading DB.....	24
Adding DB.....	25
Operating the FM Tuner.....	26~28
Recording.....	29~32
Playback Mode.....	33
EQ.....	34
Menu.....	36~44
Firmware Upgrade.....	45

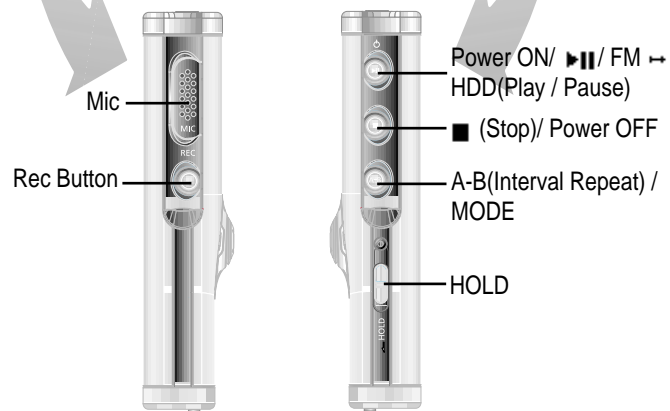
4. Additional Information

Reference.....	46
Precautions.....	47
Trouble Shooting.....	48
Accessories.....	49
Product Specifications.....	50
Regulatory information.....	51

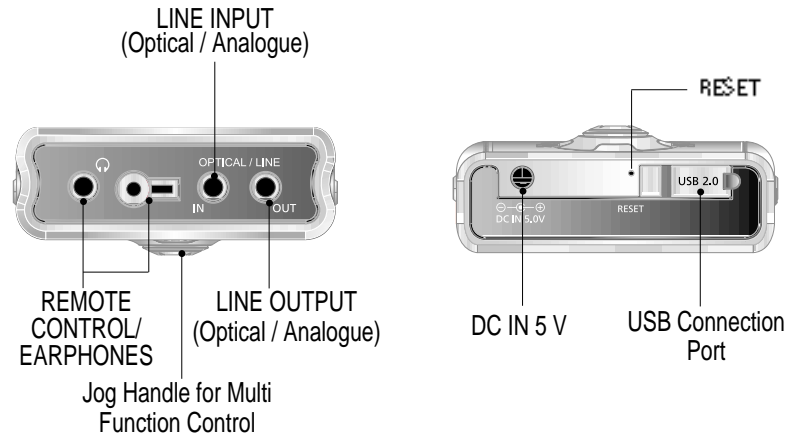
FRONT VIEW



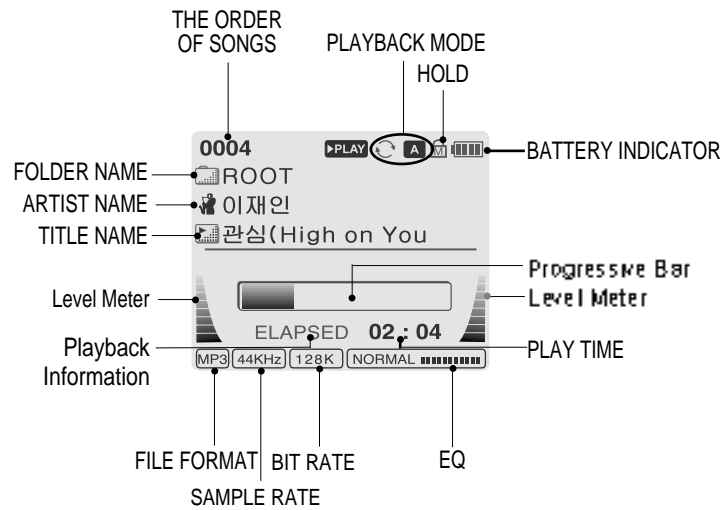
SIDE VIEW



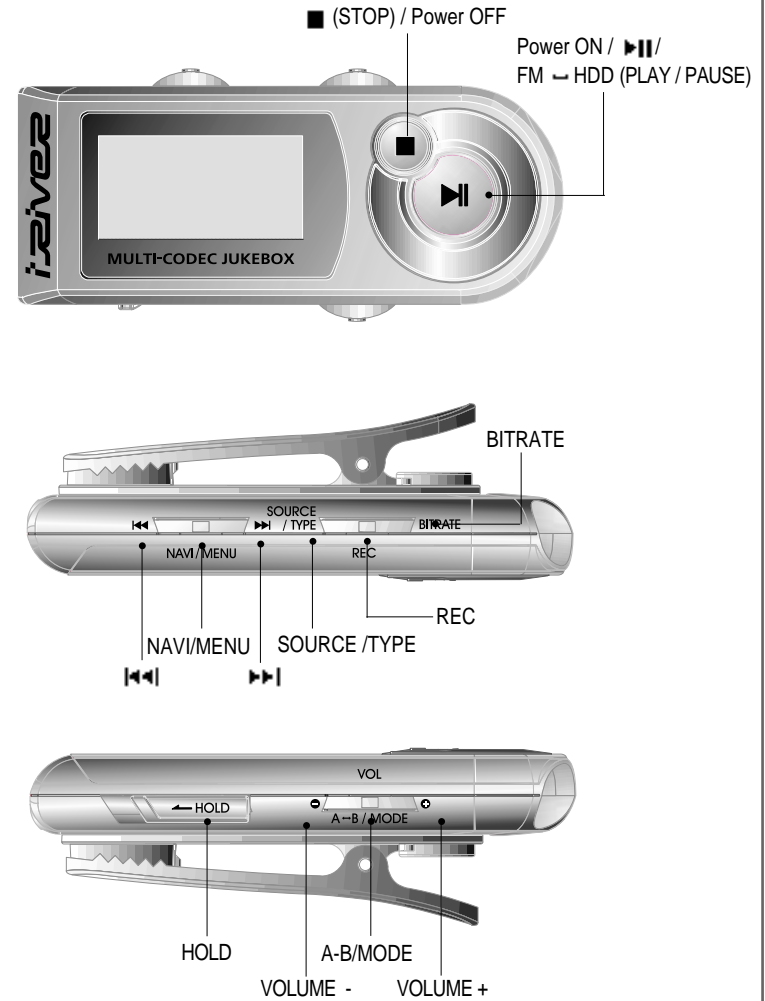
UP/ DOWN SIDE



LCD Window

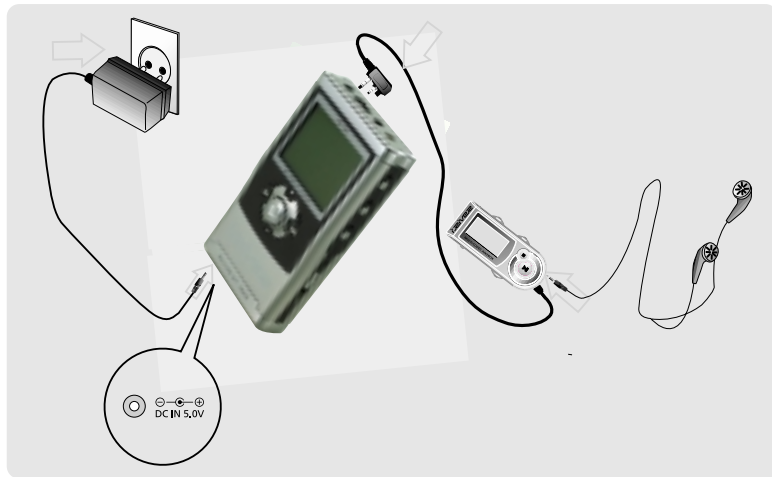


Remote Control



Using AC POWER ADAPTER

- 1 Use only the AC Power Adapter supplied with the player.
- 2 Connect the adapter to the 5V DC jack on the player and into an AC outlet.



Recharging Method

- Rechargeable function can automatically be activated while the AC adapter is connected to the player.
- When fully charged, charge operating indicator is extinguished.

Charging : Approx. 3 hours (At full discharge)

Discharging (Playback time) : Approx. 16 hours (At full charge)

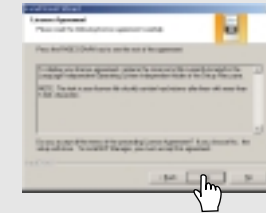
To install "Program"

Windows 2000 and Windows XP have the program to support USB 2.0 Storage Device, and you can use this player without any program installation. But install iHP manager to use DB function. And install this program to use this player as portable storage at Windows 98SE, ME O/S.

- 1 Insert the Installation CD into the CD-ROM drive. The following screen appears after inserting the CD.



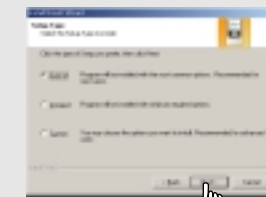
- 2 Click "Yes" to install the installation program.



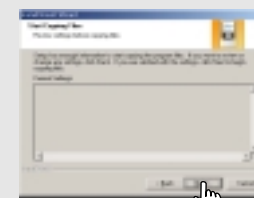
- 3 Click "NEXT" after writing user's information.



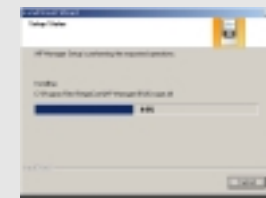
- 4 Click "Next" after selecting item to be installed.



- 5 Click "Next".



- 6 Installation is progressing.



- 7 Click "Finish".
The installation is completed.

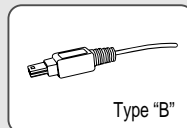
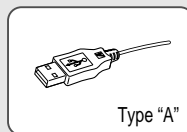
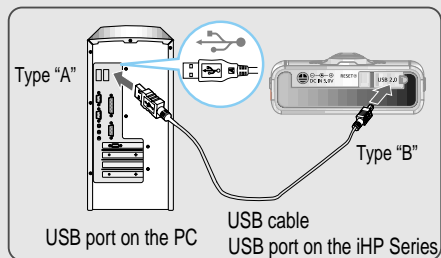


To connect the iHP-100 to the Host PC

- 1 Click to turn on the player.

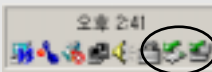


- 2 Connecting the USB cable between the player and Host PC.



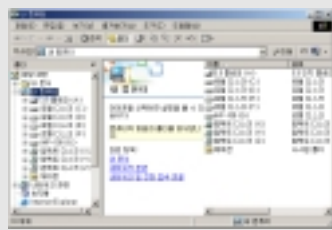
- 3 Check whether the icon on the window was made.
Only a icon may be made according to the O/S.

If the host PC using Windows98 etc. do not recognize the player,
install iHP-100 Device Driver to the host PC (Refer to page 12).



- 4 Confirm whether new driver is added
on the explorer.

The initial volume name is "iHP-100".



To install the iHP-100 Device Driver

This processing must be done after installing the iHP-100 Manager Program.

- 1 If the player is recognized on the
host PC, "Add New Hardware
Wizard" is activated. Click "Next".



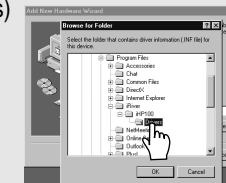
- 2 Click "Next" after selecting
"Driver Search" option.



- 3 Click "Next" after selecting the
folder saved the "iRiHP.inf"



- 4 Click "OK" after selecting the
folder installed the "iRiHP.inf" file
(C:\Program Files\River\iHP100\
drivers)



- 5 Click "Next"



- 6 Click "Next"



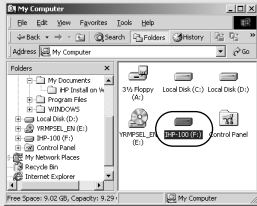
- 7 Click "Finish"
Completed the installation of "Device Driver".



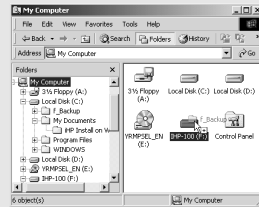
To use as a portable storage

If the player is not connected to the host PC, connect it to the host PC. (Refer to page 10)

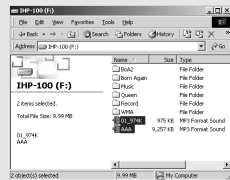
- 1 Check the icon of the player on the PC window and confirm whether the player is added as a new driver on the explorer.



- 2 To copy from the PC to the player
Drag and Drop to copy folders or files of the PC to the driver of the player.



- 3 Click "Delete" after selecting the files or folders to delete on the iHP-100 and Click "Yes" to delete.



You can use all functions using explorer and hard driver of the player as well as copying / deleting as like HDD driver.



Note

Use AC Adapter when you use the player with connection to the host PC for a long time.
If the battery's shortage occurs during tranfering datas, Data tranfering may be stopped.

To disconnect the player from the Host PC

- 1 Click anyone of 2 icons.



- 2 Click "Stop iRiver iHP-100-Driver(X)" or "Safely Remove TOSHIBA MK1—3GAL USB Disk - Drive(X)". (X : Disc Driver name)



- 3 Click "OK" after confirming the "Safe To Remove Hardware" message.

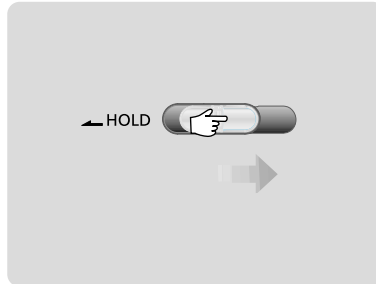


- 4 Disconnect the USB cable between the iHP-100 and host PC.

1 Connect the earphones and remote control as shown below.



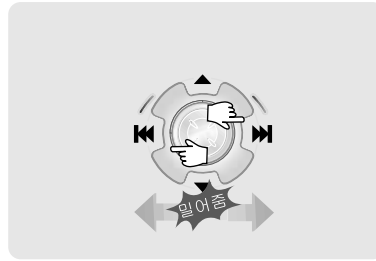
2 Put the HOLD switch to "OFF".



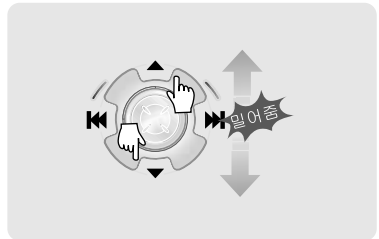
3 Press the PLAY/STOP button to turn on the player. Press it again to play.



4 To select music
 ◀◀: To select previous music
 ▶▶: To select next music

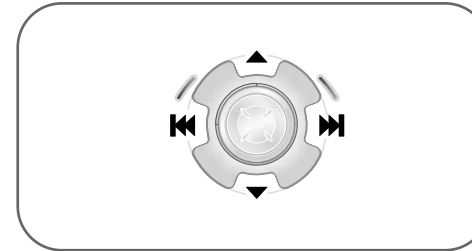


5 To adjust the volume
 + : To increase volume
 - : To decrease volume



NOTE

- When "Hold" is ON, the buttons on the player will not function.
- In case of stop status of the player or standby status of Voice recording, the player automatically turns off according to the setting of "STOP POWER OFF" on the MENU. (Refer to page 41)



■ To play / Pause



■ To fast forward



■ To stop



■ To fast reverse



■ To play next track



■ To turn off the player



■ To play previous track

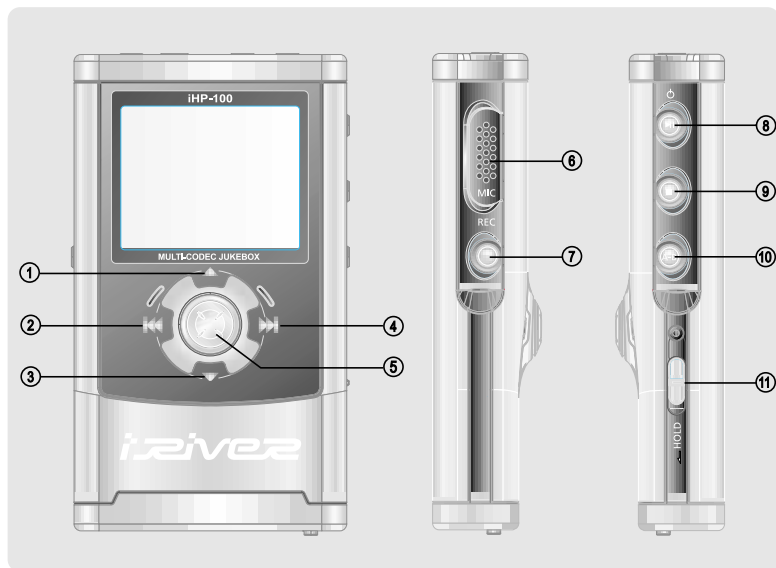


Tip

File Format displayed as below

- | | | | |
|-----|-------|-----|-------|
| MP3 | ▶ MP3 | WMA | ▶ WMA |
| ASF | ▶ ASF | WAV | ▶ WAV |





● To activate Navigation



● To activate Menu



1. To increase volume.
2. To select the previous music for Audio files or station for FM.
3. To increase volume.
4. To select the next music for Audio files or station for FM.
5. To select NAVI/MENU function.
6. Internal Microphone
7. To change record standby mode or start recording.
8. To start or pause playback to change FM ↔ HDD.
9. To stop playback or recording or turn off.
10. To select EQ mode, A-B repeat or memory stations for FM automatically.
EQ : NORMAL → ROCK → JAZZ → CLASSIC → U. BASS → User EQ
11. HOLD : the buttons on the player will not function or not.

Basic Operation

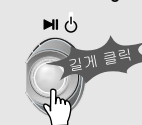


■ To adjust the volume

Press + on volume button to increase volume and press - on button to decrease volume.



File playback → FM receiving



(Refer to page 26)

* Selecting FM Mode when listening FM :



■ To Record

[Record standby]



[To select source to record]



[To start recording]



[To select Bitrate Type]

[To select File Type]



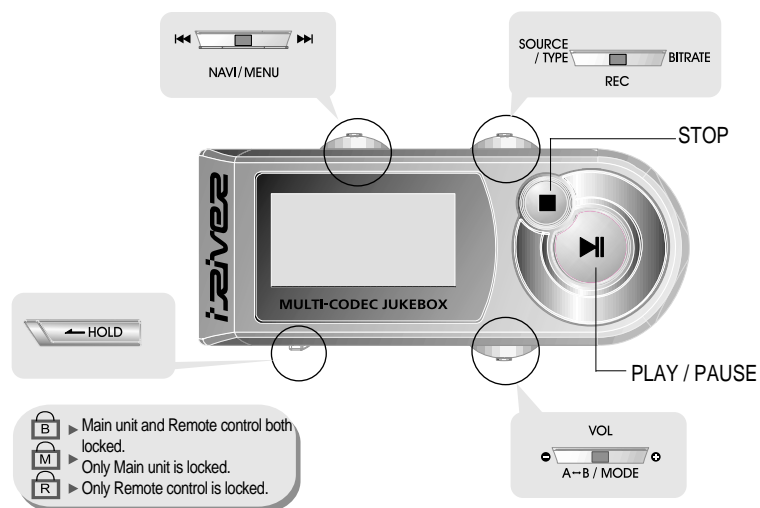
[To stop recording / Standby for recording]



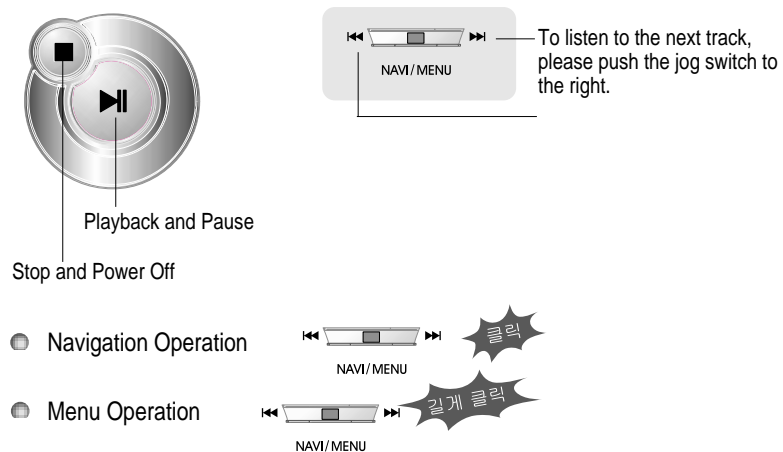
NAVIGATION

- Press NAVI/MENU button and find the desired track by pressing the VOL + or VOL - button, < or >, NAVI/MENU button.
- There are two methods using ID3 Tag and PATH/NAME of File on NAVIGATION. Refer to page 21 for details.

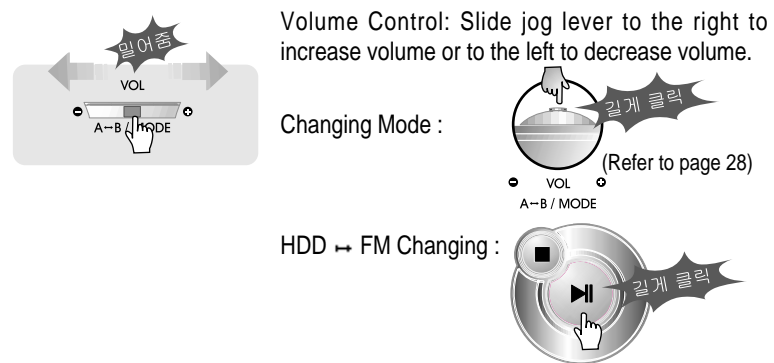
The remote control operates every function using 5 buttons.



Basic Operation Function



Basic Operation Function



NAVIGATION

Press the Navi/Menu jog lever with a short click and find the desired track by pressing **⏪** or **⏩**. To play the track, press Navi/Menu with a short click.

To move to the upper folder, press **■** with a short click. In case there is not the upper folder, exit NAVIGATION function.

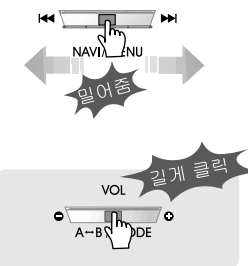
MENU

Long press of NAVI/MENU will execute menu function.

- 1 Scrolling between menus : Press **⏪** and **⏩**
- 2 Select Function: press Navi/Menu button.
- 3 Exit : Press **■** with a short click.

MODE

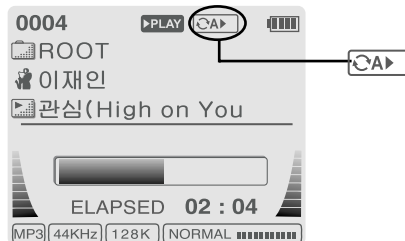
While Audio File is playing, press A-B/MODE button with a long click to activate selected modes, such as Repeat and Shuffle.



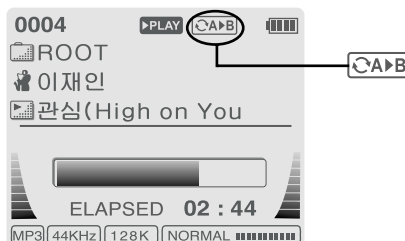
Interval Repeat

Play selected interval repeatedly while playing.

Press A-B button once to select the beginning <A> Point.



Press A-B button again to select the ending Point.



- A-B interval will be repeated.

It is useful when fast-searching your favorite file of files listed on the player by using ID3 Tag information and file name.

In case DB file (irivnavi.idb) was damaged or deleted, it is operated as a music searching function by using File Tree information.

1. Navigation using File Tree

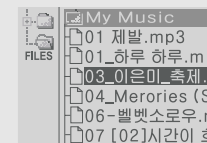
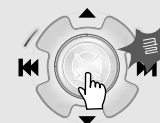
- 1 Press the NAVI/MENU handle to display the list of musics. And the current playing music is displayed.



- 2 Push the NAVI/MENU handle toward ▲ or ▼ to select a music or folder to play.



- 3 Press the NAVI/MENU handle to play the selected music or to display the contents of the selected folder.



- If you select a folder, start playback after selecting a music to play by repeating 2~3 steps.
- Push the NAVI/MENU handle toward ◀◀ to go the upper folder or the previous menu.

2. Navigation using Music Information

It is useful when fast-searching your favorite file of files listed on the player by using ID3 Tag information and file name.

In case DB file (irivnavi.idb) was damaged or deleted, it is operated as a music searching function by using File Tree information.

- 1 Press the NAVI/MENU button.
The function selection graphic displays on the LCD.



- 2 Push the NAVI/MENU handle toward **◀◀** or **▶▶** to select the searching function.



To search by artist's name	To search by album's name	To search by genre menu	To search by title name	To search by files & folders

- 3 Press the NAVI/MENU button to display detail picture of the selected searching function.



- 4 Press the NAVI/MENU handle toward **▲** or **▼** to select searching condition.



- 5 Press the NAVI/MENU button to display detail picture of the selected searching function.



- If the selected item has not any detail condition, the selected music starts playback immediately.

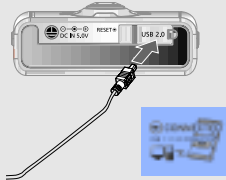


- When you select "Select All", all music fit to the selected condition are played repeatedly and **REPEAT** is displayed on the display.
- To cancel List Repeat Mode, press STOP button at the stop mode.
- Repeat 4 ~ 5 steps to search another file.
- Push **◀◀** to go back the previous step.

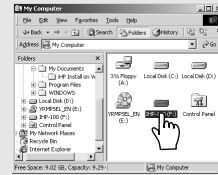
To update DB

When DB file (irivnavi.idb) was damaged or deleted by your mistake, you can not use NAVIGATION by using ID3 Tag information. You can create or restore DB file by using the host PC.

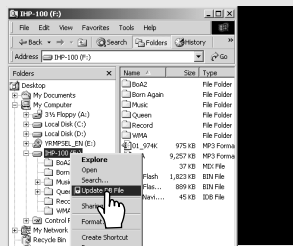
- 1 Connect the player to the host PC. (Refer to "Connecting the iHP-100 to the Host PC", page 10)



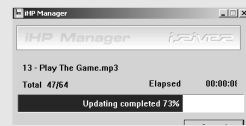
- 2 After activating the explorer on the PC, select iHP-100 driver.



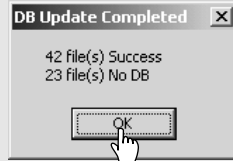
- 3 Click the right button of mouse.



- 4 Select "DB File update" to activate DB File update.



- 5 Click "OK".



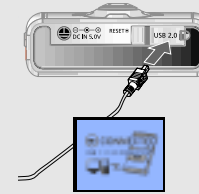
- 6 After disconnecting the player from the host PC, you can use the Navigation function using ID3 Tag. (Refer to "Disconnecting the player from the Host PC", page 13.)



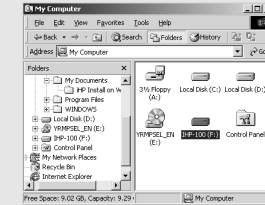
To add DB

When DB file (irivnavi.idb) was damaged or deleted by your mistake, you can not use NAVIGATION by using ID3 Tag information. You can create or restore DB file by using the host PC.

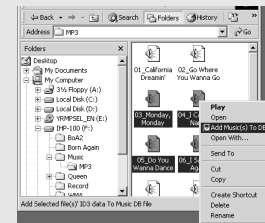
- 1 Connect the player to the host PC. (Refer to "Connecting the iHP-100 to the Host PC", page 10)



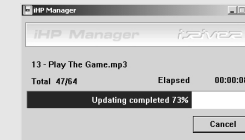
- 2 After activating the explorer on the PC, select iHP-100 driver.



- 3 Click the right button of mouse after selecting MP3 files or Folders to add to DB.



- 4 Select "Add Music(s) to DB" to activate this function.



- 5 ID3 Tag information of the selected files are added to DB. In case DB file is not, new DB file (iRivNavi.IDB) is created.

- 6 After disconnecting the player from the host PC, you can search the added musics by using ID3 Tag. (Refer to "Disconnecting the player from the Host PC", page 13.)

