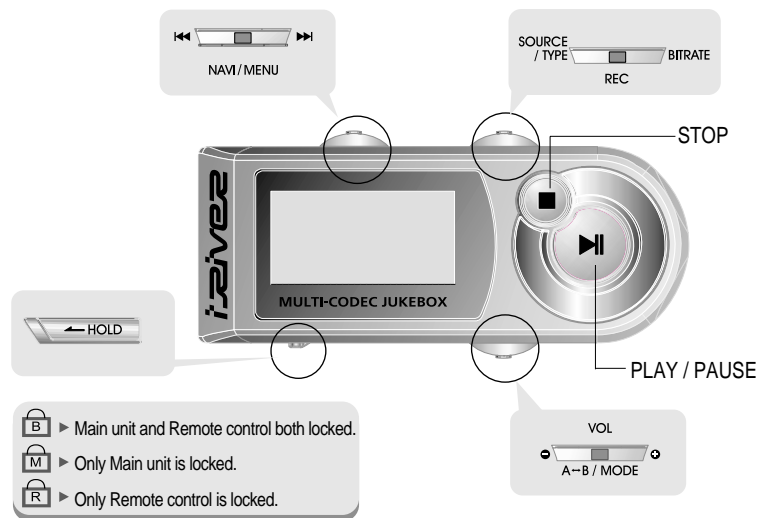


The remote control operates every function by using 5 buttons.



- L** Main unit and Remote control both locked.
- M** Only Main unit is locked.
- R** Only Remote control is locked.

BASIC OPERATION FUNCTION

- Click

Turn on the player Playback and Pause
- Long Click

Power Off
- Click

Stop the playback
- Push

To listen to the next track, push the jog switch to the right.
- Push

To listen to the previous track, push the jog switch to the left.
- Push

To listen to the previous folder
- Push

To listen to the next folder
- Click

Navigation Operation
- Long Click

Menu Operation

BASIC OPERATION FUNCTION

- Push

Volume Control

Slide jog lever to the right to increase volume or to the left to decrease volume.
- Long Click

Changing Mode
- Long Click

HDD ↔ FM Changing
- Click

To change EQ/SRS
- Long Click

Record Standby

NAVIGATION

Press the Navi/Menu jog lever with a short click and find the desired track by pressing or . To play the track, press Navi/Menu with a short click.

To move to upper folder, click the STOP button or long click NAVI/MENU button. If there is no upper folder, pressing the Stop button will exit the NAVIGATION mode.

MENU

Long press of NAVI/MENU will enter the MENU.

- Scrolling between menus : Press and .
- Select Function: press Navi/Menu button.
- Exit: Press the stop button.

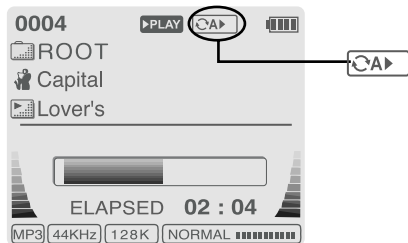
MODE

While an audio file is playing, press and hold the A-B/MODE button to activate playback modes (Repeat, Shuffle, etc.).

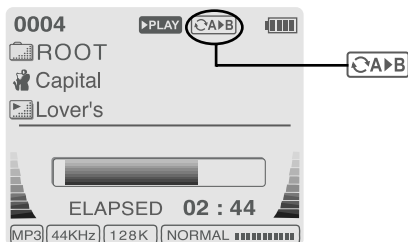
INTERVAL REPEAT

Play selected interval repeatedly while playing.

Press A-B button once to select the beginning <A> Point.



Press A-B button again to select the ending Point.



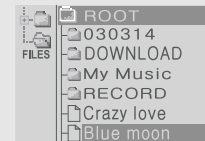
● A-B interval will be repeated.

Navigation mode is useful for quickly searching your files by using ID3 tag information and file name.

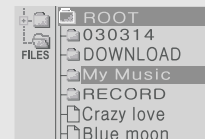
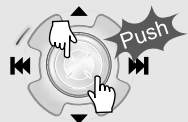
In case the database file is damaged or deleted or DB SCAN OPTION is set to "OFF", the Navigation function will use the normal "File Tree" method of searching. (Refer to page 24 for DB file information.)

1. NAVIGATION USING FILE TREE

1 Press the NAVI/MENU button to display the list of audio tracks. The current track will also be displayed.



2 Push the NAVI/MENU handle toward ▲ or ▼ to select a track or folder to play.



3 Press the NAVI/MENU button to play the selected track or display the contents of a folder.



- Once you select a folder, choose the song you wish to listen to and press the NAVI/MENU button.
- Push the NAVI/MENU handle toward ◀◀ to go the upper folder or the previous menu.

2. NAVIGATION USING MUSIC INFORMATION

In order to use the navigation by Artist/Album/Genre/ and Title, the DB SCAN setting must be set to YES in the firmware menu, (refer to page 41).

- 1 Press the NAVI/MENU button.
The function selection graphic displays on the LCD.



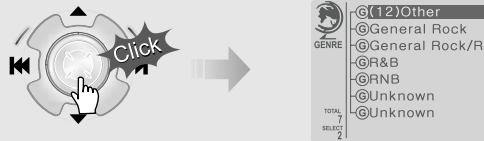
- 2 Push the NAVI/MENU handle toward ◀◀ or ▶▶ to select the searching function.



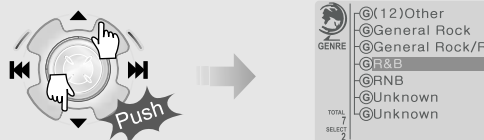
To search by artist's name To search by album's name To search by genre menu To search by song title To search by files & folders



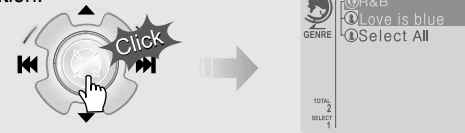
- 3 Press NAVI/MENU to display the details of the selected searching method.



- 4 Press the NAVI/MENU handle toward ▲ or ▼ to select searching condition.



- 5 Press the NAVI/MENU button to display the detail of the selected search condition.



- If the selected search condition does not have any details, playback of matching tracks will begin immediately.

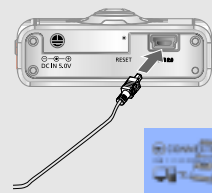


- When you select "Select All", all tracks matching the selected condition are played and "L" (Indicating List Repeat Mode) is displayed.
- To cancel List Repeat Mode, press Stop to stop playback and press Stop again to cancel the List Repeat Mode.
- Repeat 4 ~ 5 steps to search for other tracks.
- Push ◀◀ to go back the previous step.
- **Caution:DB navigation does not work when**
The directory or file name is over 52 characters

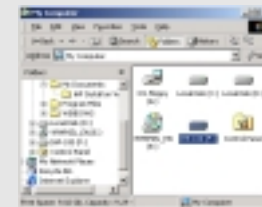
TO ADD DB

If you are adding songs to the iHP and not deleting any files, you can save time by adding the files to the DB instead of updating the entire DB file.

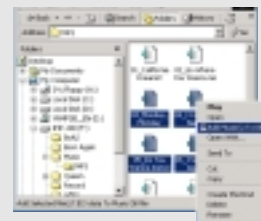
- 1 Connect the player to the host PC. (Refer to "Connecting the iHP to the Host PC", page 10)



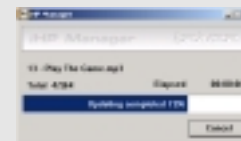
- 2 After activating the explorer on the PC, select iHP driver.



- 3 Click the right button of mouse after selecting MP3 files or Folders to add to DB.



- 4 Select "Add Music(s) to DB" to activate this function.



- 5 ID3 Tag information of the selected files are added to DB. In case DB file is not, new DB file (iRivNavi.iDB) is created.

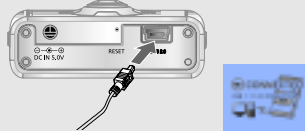
- 6 After disconnecting the player from the host PC, you can search the added music by using ID3 Tag. (Refer to "Disconnecting the player from the Host PC", page 13.)



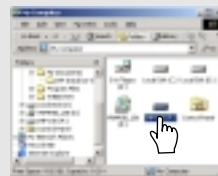
TO UPDATE DB

The DB is a DataBase of the songs on your iHP player. It indexes all the Artist, Album, Genre, and Title information as found in the ID tags of your MP3 files. It is important to perform the steps below after loading the iHP player for the first time. This can also be used to re-create the DB file if it is damaged or accidentally deleted. Any time songs are deleted from the player, the DB must be updated to keep the Artist, Album, Genre, and Title lists accurate. When new songs are added the DB must be updated or the songs must be added to the DB using the instructions on the following page.

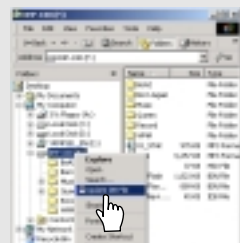
- 1 Connect the player to the host PC. (Refer to "Connecting the iHP to the Host PC", page 10)



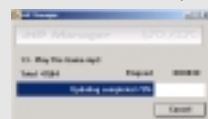
- 2 Open Windows Explorer and select the iHP drive.



- 3 Right click on the iHP.



- 4 Select "DB File update" to activate DB File update.



The DB update will take from three to five minutes depending on the number of songs loaded on the iHP.

- 5 Click "OK".



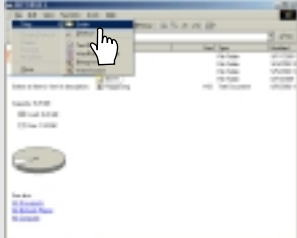
- 6 After disconnecting the player from the host PC, you can use the Navigation function to search for songs using ID3 Tag information. (Refer to "Disconnecting the player from the Host PC", page 13.)



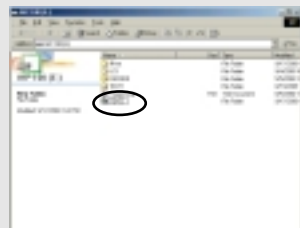
TO MAKE A TEXT FILE

You can read text files on your iHP player by creating a "TEXT" folder and copying .TXT files into it.

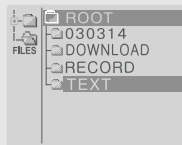
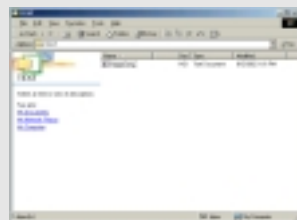
- 1 Make a new folder under ROOT folder on the Windows Explorer.



- 2 Type TEXT as a name of a new folder on the Windows Explorer.



- 3 Copy *.txt files on the PC to the player.



NOTE

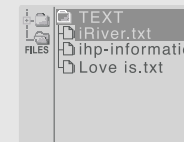
- The screen can display 19 characters across and 8 lines.
- The text is not displayed on the remote.
- Text files can not be deleted directly from the player, it must be connected to the PC and files deleted from Windows Explorer.
- The player can store 200 text files, and can read up to 240 Kbytes per each text file.

TO READ A TEXT FILE

- 1 Click the NAVI/MENU button to go to NAVI mode. Or select the fifth icon, "To search by files & folders" on the Navigation using Music Information



- 2 Push the NAVI/MENU lever toward ◀◀, ▶▶ or ▲, ▼ to select the TEXT file under the TEXT folder.



- 3 Click the NAVI/MENU button.



- 4 TEXT file is displayed on the LCD.

Your iRiver MP3 hard drive player can be updated to support new features, check below for the most recent updates and instructions. Also, to

- 5 Click the REC button to switch the display to the current song information. Click the REC button again to return to the text file.



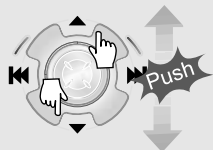
- 6 Click the STOP button to exit the text file and return to the song display screen.



TO SEARCH THE TEXT FILES

1. To Search a Text files generally

1 Push ▲, ▼ lever to move to the next line during reading the text.

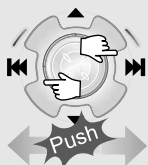


The remarkably small and lightweight iHP-100 plays over 300 hours of digital music. Within the sleek magnesium body lies a



small and lightweight iHP-120 plays over 300 hours of digital music. Within the sleek magnesium body lies a rechargeable

2 Push ◀◀, ▶▶ lever to move to the next page during reading the text.



The remarkably small and lightweight iHP-100 plays over 300 hours of digital music. Within the sleek magnesium body lies a



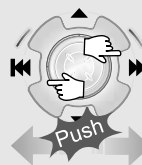
body lies a rechargeable battery that delivers up to 16 hours of life, a built-in FM tuner, an ultra-fast USB 2.0 connection and

2. To go to specific position (Useful for large files.)

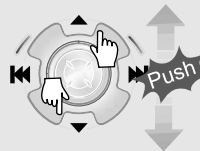
1 Click the NAVI/MENU button to move the desired position of the text.



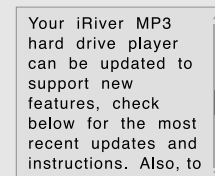
2 Push ◀◀, ▶▶ lever to select the desired Digit.



3 Push ▲, ▼ lever to select the desired numeral.



4 Click the NAVI/MENU button. The TEXT goes to the selected position.



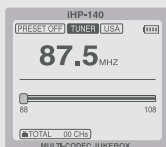
NOTE The number displayed is the Kilobyte size and Kilobyte location in the text file.

OPERATING THE FM TUNER

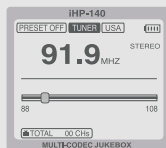
- While playing an Audio File, Press and hold the PLAY/PAUSE button.



The FM function picture displays on the LCD. ▶



- Push the ◀◀ or ▶▶ button to select FM frequency.



- Press the STEREO/PLAY/PAUSE button to select Stereo/Mono.



SELECTING FREQUENCY

- To change frequency, push the ◀◀ or ▶▶ switch to the left or the right.



- Auto Scan function: To select a station to store, press the NAVI/MENU button to exit Preset mode and find a station by using ◀◀ or ▶▶. Exit Preset

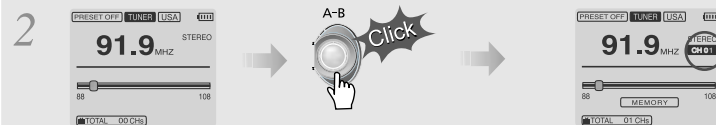


- PRESET Mode : To select a station saved in memory, press the NAVI/MENU button to enter Preset mode. Select a stored station by using the ◀◀ or ▶▶ switch.



MEMORY FUNCTION (Save stations manually)

- Select a station by pushing the ◀◀ or ▶▶ switch to the left or the right.



Push ◀◀ or ▶▶ and select the desired station to save the station to.



again

Save complete

Select CH02



will exit the memory function without saving.

- Up to 20 stations can be stored.

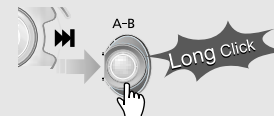
AUTO MEMORY FUNCTION (Save stations automatically)

Automatically select station and save them in sequential order.

- Press the NAVI/MENU button to exit the Preset mode.



- Press and hold the A-B/MODE button.



- Up to 20 stations will be stored in channels 1~20 automatically.

▶ **Note:** The Auto Memory Function may not function well in weak transmission areas.

MEMORY DELETE FUNCTION (Delete saved channels)

- 1 Select the channel to be deleted at preset mode.
- 2 Press and hold the memory button.



- The next channel will appear when channel deletion is completed.
Push the MEMORY button if you want to delete the next channel also.

- ▶ FM Tuner reception may vary in different areas.
- ▶ While in Preset mode, Auto Scan and Auto Memory functions are not available.
- ▶ When the player does not have any preset channels, EMPTY will be blinking at preset mode.

CONNECTING THE PLAYER TO EXTERNAL AUDIO SOURCE

Connect the stereo cable to the LINE IN jack on the iHP and to the LINE OUT or Headphone jack of an external audio device.

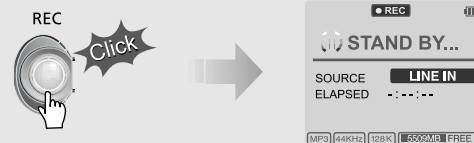
If the external audio device has an Optical output, connect an Optical cable to the Optical Out jack on the external device and to the Optical In jack on the iHP.

When recording by using the external microphone, connect the external microphone to the Line-In jack.



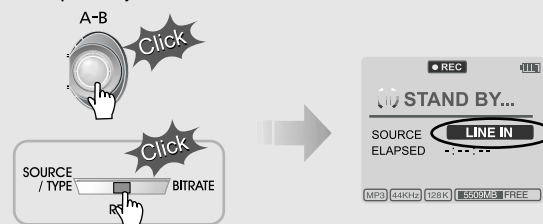
RECORDING

- 1 Press the REC button to activate recording standby mode.

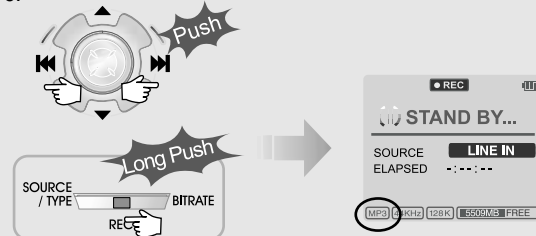


- 2 Press A-B/MODE button or push the REC switch toward SOURCE/TYPE to select the source to record

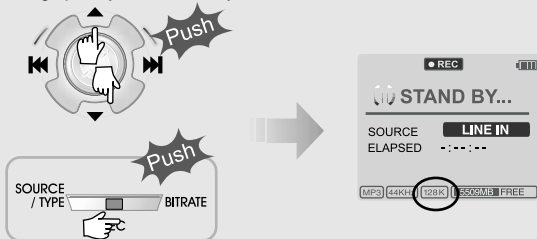
- To record voice with internal microphone : INT.MIC
- To record voice with the external microphone: EXT.MIC
- To record from an external audio device with an Optical Out: OPTICAL.
- To record from an external audio device with a standard Line Out or Headphone jack: LINE-IN



- 3 Push the MENU/NAVI handle toward or , or push the REC button on the remote control toward SOURCE/TYPE to select FILE TYPE to save.



- 4 Push the MENU/NAVI handle toward ▲ or ▼, or push the REC button on the remote control toward BITRATE to select BITRATE TYPE to set recording quality. This is only for MP3 file.



- When saving as WAV file, the Bitrate generally is 1411Kbps. (44.1 KHz, 16Bit, Stereo)
- When saving the optical signal with 48KHz as WAV file, the Bitrate is 1536Kbps. (48 KHz, 16Bit, Stereo)

- 5 Push the REC button to start recording. When recording from an external audio device, be sure to start the playback on that device when recording on to the iHP.



NOTE Volume level can not be controlled on the iHP while recording from an external device.

- 6 While recording, press ■ (STOP/PWR OFF) to stop recording and switch to recording standby mode. Press the REC button again to begin recording to a new file.



- Press the REC button to pause recording. And press the REC button again to restart recording.

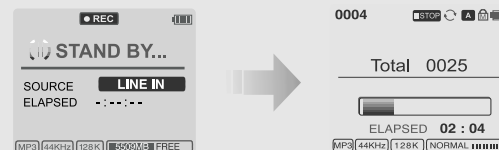
TO PAUSE RECORDING

- During recording, press REC button to pause recording, press REC button again to start recording.



TO STOP RECORDING

- At recording standby mode, press and hold ►► button to go previous mode.



- Recorded files are stored in folders matching the source name from where the audio was recorded.
 - Line In/Optical In : ROOT\RECORD\AUDIO\AUDIOXXX.MP3(WAV)
 - INT/EXT Mic : ROOT\RECORD\VOICE\VOICEXXX.MP3(WAV)
- Recording is automatically stopped if:
 - The iHP's memory is full.
 - When the recorded MP3 file size is over 195MB
 - When the recorded WAV file size is over 795MB
 - The recorded time is longer than 5 hours.
 - The battery is low.
 - When sampling rate is changed during optical recording
- **Caution**
Optical recording can sample at 44.1KHz or 48KHz. It is important to match the recording sampling rate with the playback sampling rate of your optical output device. Note, when the player is in Record Standby Mode, it will automatically shut off according to the "STOP POWER OFF" setting (Refer to page 43).

TO PLAY THE RECORDED FILE

Press ►► button to play the recorded file at the recording standby mode.



The iHP has various playback modes.

Please refer to the function controls (see page 44 for details) for user-defined configurations.



◀ When the A-B/MODE button is pushed, the playback mode changes and an icon indicating the mode is displayed.

REPEAT

	Play a single track repeatedly. Press or to play the previous or next track.
	Play all tracks in the folder and stop.
	Play all tracks in the folder repeatedly.
	Play all tracks in the player repeatedly.

SHUFFLE

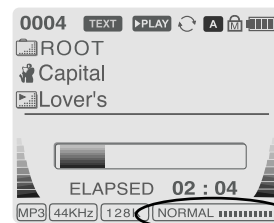
SFL	Randomly play all tracks in the player and stop.
SFL	Play a single track repeatedly. Press or to switch to a new random track.
SFL	Randomly play all tracks in the folder and stop. Press or to switch to a new random folder.
SFL	Randomly play all tracks in the folder repeatedly.
SFL	Randomly play all tracks in the player repeatedly.

INTRO

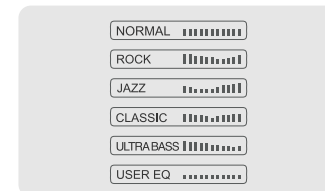
	INTRO: Play beginning 10 seconds of each track in sequential order.
	INTRO HIGHLIGHT: Plays 10 seconds from 1 minute into each track in sequential order. You can set this function in the MENU function.

EQ / SRS

- You can change the EQ to match your music style.
 - Normal / Rock / Jazz / Classic / Ultra Bass / User EQ
 - SRS / TruBass / WOW (Preset) / WOW (User)
- Whenever the REC button is pressed, EQ changes as the following order : (Normal → Rock → Jazz → Classic → Ubass → User EQ → SRS → TruBass → WOW(Preset) → WOW(User))
- You can set the EQ function by using Function Menu. Refer to page 44~45.



EQ

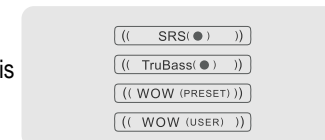


- EQ (SRS Off) : SRS is deactivated and EQ set by user is operated. (Normal, Rock, Jazz, Classic, UBass, User EQ)

SRS

1) SRS Selection

- SRS(●) : SRS is activated.
- TruBass : TruBass is activated.
- WOW (Preset) : WOW (Preset) is operated as a preset setting organized by SRS +TruBass +Focus function.
- WOW (User) : WOW (User) is operated as a setting of SRS +TruBass +Focus adjusted in the SRS Settings on the menu by user.



2) SRS Settings (The defaults is 5, 7, High, 60Hz)

- SRS(●) : SRS range can be set from 1 to 10.
- TruBass : TruBass range can be set from 1 to 10.
- Focus : The fineness of the sound can be selected. (Low, High)
- Boost : You can set the Bass according to the using earphones or the Bass. (40, 60, 100, 150, 200, 250, 300, 400Hz)

* SRS(●) is the trade mark of SRS Labs. Inc.

What is SRS(●)?.....

SRS-WOW is simulated 3D surround sound developed by SRS Lab and is composed by SRS, TruBass, Focus, and WOW.