



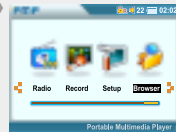
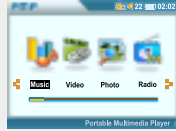
Turning on/off the player

2 Selecting the function

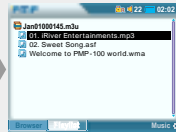


1 When displayed function selection mode, Press ◀ or ▶ button to select desired a function.

- | | |
|-----------|-------------------------|
| • Music | Playing music files |
| • Video | Playing video files |
| • Photo | Viewing photo files |
| • Radio | Listening FM station |
| • Record | Recording voice/audio |
| • Setup | Setting the functions |
| • Browser | Searching folders/files |



2 Press SELECT button to execute selected a function.



(Playlist)

3 Turning off the player



To turn off the player, press POWER button.



Sound control

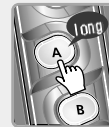
1 Adjusting the volume



During the music or video file playback, press ▲▼ button to increase or decrease volume



2 Muting the sound



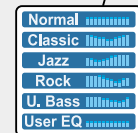
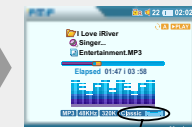
During the listening the FM, press A(A-B)button, to mute the sound.
To restore the sound, press A (A-B)button.



3 Changing the sound EQ



During the music file playback, press B(EQ/MODE) button, to change the sound EQ.



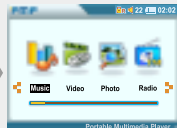


Playing music files

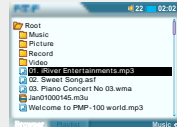
① Basic playback



- 1** Press the POWER button to turn on.
Function selection screen is displayed.



- 2** Press the SELECT button to select "MUSIC" by using the ◀ ▶ button.
The final saved playlist or the playlist played at last is displayed.



- You can select Browser or Playlist by turns by pressing the B button.
The playable files with the selected program is only displayed.



- 3** Press the SELECT button after selecting a music file to play by using the ◀ ▶ button.
Press ▶ button to enter into the folder.
Press ◀ button to go the upper folder.
If select Folder, all files and sub folder in the folder are selected.



Playing music files

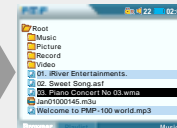


- 4** Press the SELECT button to add files to keep playing by using the ◀ ▶ button.

If select the selected file again, the selection is released.

You can only select files in the same folder.

If select another folder, the previous selected file is released.

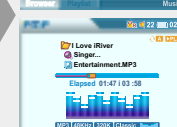


- 5** Press the SELECT button after selecting "Select All" on the pop-up menu to select all files in the folder.



- 6** Press the ▶ button to play the selected file directly or press the SELECT button after selecting "Play" on the pop-up menu.

The selected files add to Playlist and start playback.





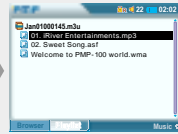
Playing music files

2 Skipping to Next/Previous File



During playing a music file, press the ◀▶ button to skip to the next or previous file in the playlist.

If pressing the ▶ button while the last file is playing, the playback is stopped and the Playlist screen is displayed.

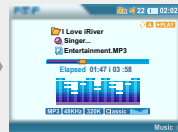


3 Fast searching



Press and hold ◀ or ▶ button to within a music file.

Release ◀ or ▶ button to play normal speed.



4 Help about a Music



Press the “?(Help)” button. The explanation about each button is displayed.

Press the “?(Help)” button again to exit Help.



<Help>



Playing music files

5 To pause playback



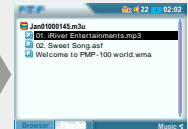
During playing, press the ⏸ button to pause playing, press ▶ button again to start playing.



6 Exit playing a music file



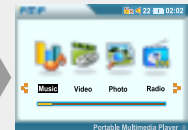
1 During playing, press and hold the ▶ button to stop playing. The playing finished and the Playlist screen is displayed.



Playlist



2 In Browser or Playlist screen, press and hold the ▶ button to exit playing music files. Function selection screen is displayed.



Function selection

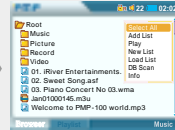


Playing with DB Scan

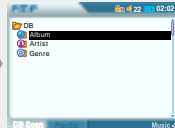
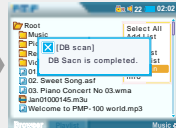
① Playing with DB Scan



1 Press the SELECT button to open the pop-up menu.



2 Press the SELECT button after selecting "DB Scan" by using the ▲▼ button.

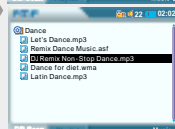


3 Press the SELECT button after selecting a music file by using the ◀▶▶▶ button.

Press ▶ button to enter into the folder.

Press ◀ button to go the upper folder.

If select Folder, all files and sub folder in the folder are selected.



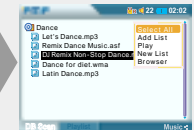
NOTE Files deleted after DB Scan are turned red. In this case, you can update DB file by using Manager Software.
In case DB Scan is failed, refer to "4-2 Using DB Scan (page ??)" to create DB file.



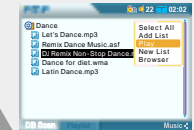
Playing with DB Scan



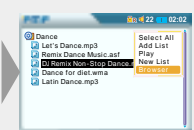
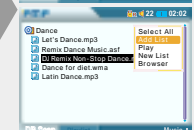
4 Press the SELECT button after selecting "All" on the pop-up menu to select all files in the



5 Press the ▶|▶ button to play the selected file directly or press the SELECT button after selecting "Play" on the pop-up menu. The selected files add to Playlist and start playback.



6 Press the SELECT button after selecting "Load List" on the pop-up menu by long click of the SELECT button to exit DB

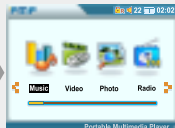


Playing a video file

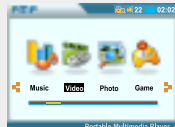
① Playing a video file directly



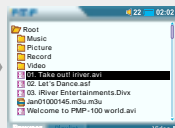
- 1 Press the POWER button to turn on.
Function selection screen is displayed.



- 2 Press the SELECT button to select Video Mode by using the ◀▶ button.



The final saved playlist or the playlist played at last is displayed.
You can select Browser or Playlist by turns by pressing the B button.
The playable files with the selected program is only displayed.



<Browser>



<Playlist>



- 3 Press the SELECT button after selecting a motion picture file to play by using the ◀▶▶▶ button.

Press ▶▶▶▶ button to enter into the folder.
Press ◀▶▶▶ button to go the upper folder.
If select Folder, all files and sub folder in the folder are selected.



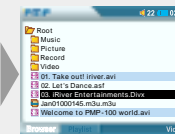
Playing a video file

- 4 Press the SELECT button to add files to keep playing by using the ◀▶▶▶ button.

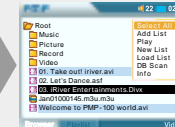
If select the selected file again, the selection is released.

You can only select files in the same folder.

If select another folder, the previous selected file is released.

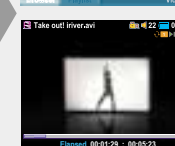
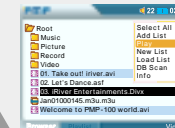


- 5 Press the SELECT button after selecting "Select All" on the pop-up menu to select all files in the folder.



- 6 Press the ▶▶▶▶ button to play the selected file directly or press the SELECT button after selecting "Play" on the pop-up menu.

The selected files add to Playlist and start playback.





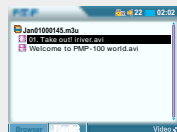
Playing a video file

2 Skipping to Next/Previous File



During playing a motion picture, press the ◀▶ button to skip to the next or previous file in the playlist.

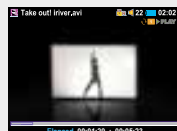
If pressing the ▶ button while the last file is playing, the playback is stopped and the Playlist screen is displayed.



3 Fast Playing



Press and hold the ◀▶ button for fast-forward or fast-reverse playback.
Release the button for normal playback.



4 Help about a Motion Picture



Press the “?/Help” button. The explanation about each button is displayed.
Press the “?/Help” button again to exit Help.



<Help>



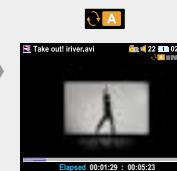
Playing a video file

5 Changing Playback Mode



While playing a video file, press the B (EQ/MODE) button to change the playback mode.

The playback mode is changed whenever it is pressed. (1 → All → Normal)

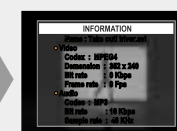


6 View information about a video file



Press the B (EQ/MODE) button to view information about a video file.

Press the B (EQ/MODE) button again to exit viewing information about a video file.

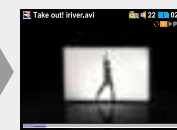


7 Muting Sound (BG Mute)



Press and hold the A (A-B) button to mute while playing a video file.

Press and hold the A (A-B) button again to release the muting.



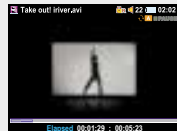


Playing a video file

8 Pause playing



During playing, press the **▶▶** button to pause playing, press **▶▶** button again to start playing.



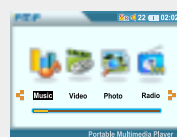
9 Exit playing a video file



1 During playing, press and hold the **▶▶** button to stop playing. The playing finished and the Playlist screen is displayed.



2 In Browser or Playlist screen, press and hold the **▶▶** button to exit playing a video file. Function selection screen is displayed.



Viewing photo files

1 Viewing photo files directly

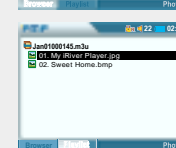


1 Press the **SELECT** button to select Photo Mode by using the **◀▶** button.

The final saved playlist or the playlist played at last is displayed.

You can select Browser or Playlist by turns by pressing the **B** button.

The playable files with the selected program is only displayed.

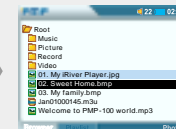


2 Press the **SELECT** button after selecting picture file to view by using the **◀▶▶▶** button.

Press **▶▶** button to enter into the folder.

Press **◀▶** button to go the upper folder.

If select Folder, all files and sub folder in the folder are selected.





Viewing Image Files



- 3** Press the SELECT button to add files to keep viewing by using the ◀▶▶▶ button.

If select the selected file again, the selection is released.

You can only select files in the same folder.

If select another folder, the previous selected file is released.

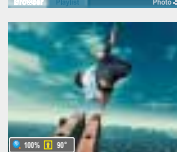
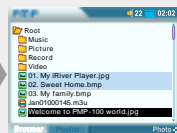


- 4** Press the SELECT button after selecting "Select All" on the pop-up menu to select all files in the folder.



- 5** Press the ▶▶ button to play the selected file directly or press the SELECT button after selecting "Play" on the pop-up menu.

The selected files add to Playlist and start playback.



Viewing photo files

- 2** View photo file's Information



Press the B (EQ/MODE) button to view image information.

In case of "exif" file, press it again for detail information.

Press the B (EQ/MODE) button again to exit viewing image information.



- 3** Skipping to next/previous file



During playing picture, press the ◀▶ button to skip to the next or previous file in the playlist.

If pressing the ▶ button while the last file is playing, the playback is stopped and the Playlist screen is displayed.



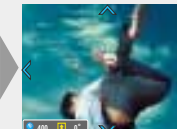
- 4** Zooming a picture



- 1** Press the A button to enlarge the picture by 2/ 4/ 8/ 1 times.



- 2** Press the ◀▶▶▶ button to move zoom point at Zoom mode.



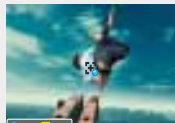


Viewing photo files

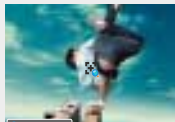
5 Zooming with zoom point



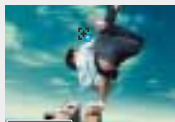
1 Press the B button to use zoom mode.



2 Press the A button to enlarge the image centering around zoom point.
The scale ratio is 2/ 4/ 8/ 1 times



3 Press the ◀▶▶▶ button to move the zoom point at the zoom mode.



4 Press the B button to exit zoom mode.
Zoom cursor is disappeared and the original image is played.



6 Help about photo viewing



Press the ?(Help) button.
The explanation about each button is displayed.

Press the ?(Help) button again to exit Help.



Viewing photo files

4 Exit viewing photo files



1 Press and hold the ▶▶ button to stop playback while image file is playing.
Playlist screen is displayed.



2 Press and hold the ▶▶ button again.
Image viewing exit and function selection screen is displayed.

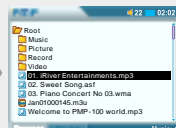


Using playlists

1 Playing with playlists



- 1** Press the B button to open Browser at the stop mode.
You can select Browser or Playlist by turns by pressing the B button.
The playable files with the selected program is only displayed



<Browser>



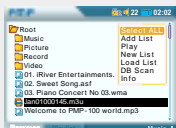
<Playlist>



- 2** Press the SELECT button after selecting Playlist to play by using the ◀▶▶▶ button.



- 3** Press and hold the SELECT to display the pop-up menu.



Using Playlists



- 4** Press the SELECT button after selecting "Open List" by using the ▲▼ button.
Files in the Playlist is displayed..



- 5** Press the B button to select "Playlist" screen.
Confirm the Playlist.



- 6** Press the ▶|▶ button to play the selected file directly or press the SELECT button after selecting "Play" on the pop-up menu.



The selected files play in sequential order.

