

PPS11

Astell&Kern

---

**INSTRUCTION BOOK**

User Guide

# CONTENTS

## Getting Started –<sup>01</sup>

Package Contents	02
Part Names	03
Power Management	04
Charging	05
Connections	06
Updating Firmware	10

## Using the Device –<sup>02</sup>

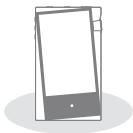
Basic Operations	11
Home Screen	15
Notification Panel	17
Purchasing or Streaming Music from Store	19
AK Connect	20
Listening to Music	23
Playlist Management	26
USB DAC Installation	29
How to Use USB Audio	30
Settings	31
Connecting to a Wireless Network	36
Using Bluetooth	37
Equalizer Setup	39

## Miscellaneous –<sup>03</sup>

Safety Precautions	42
Troubleshooting	44
Copyright	45
Registered Trademarks	46
Disclaimers	46
Specifications	47

# Package Contents

Contents may be changed without prior notice to improve the performance or quality of the product.



**PPS11**



**5-Pin Micro-USB Cable**



**Quick Start Guide & Warranty Card**

**5-Pin Micro-USB Cable:** Connects the product to a computer or utilize to charge the product.

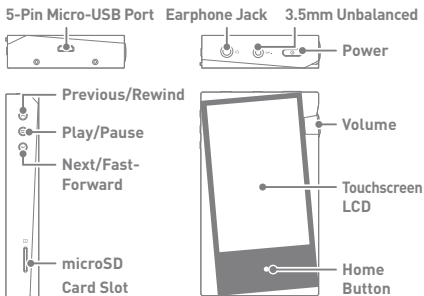
**Quick Start Guide:** Basic overview of using the product.

**Warranty Card:** This card is required for customer service and technical support. Please keep this card.

**User Guide:** The User Guide can be downloaded from the Activo website:  
[<http://www.activostyle.com>].

# Part Names

The appearance of the product, as well as the printed and engraved information, may vary depending on the model.



**5-Pin Micro-USB Port:**  $9V \approx 1.67A$  - DC Power symbol.

Connect to a computer or recharge the device.

**Earphones:**  - Earphone symbol.

Output sound to connected earphones.

**3.5mm Unbalanced:** BAL. - 3.5mm Unbalanced Port symbol.

Connects earphones or headphones with a 3.5mm unbalanced jack to output sound.

**Power:**  - Power symbol.

Short-press - Turns the screen on or off.

Long-press - Turn the device on and off.

**Previous/Rewind:**


Short-press - Plays the previous song or restarts the song.

Long-press - Rewind.

**Play/Pause:** Play/pause current track.

**Next/Fast Forward:** Short-press - Plays the next track.

Long-press - Fast-forward current track.

**microSD Card Slot:**  - MicroSD card slot symbol.

Insert a microSD card in the device to access the files on the microSD card.

**Volume:** Turn the wheel to adjust volume.

**LCD Touchscreen:** Activate the screen and touch it to start.

**Home Button:** Press to return to Home Screen.

# Power Management

### Turning on/off Power

1. Long-press the [Power] button of the device to turn it ON.
2. While the device is on, long-press the [Power] button to shut down the device. A confirmation message will appear.
3. Press [OK] to turn off the device.



This device has an automatic power saving function to conserve battery power. The device will turn off if there is no user input during the period defined in [Menu - Settings - Power - Automatic Shutdown]. (See Page 34.)

### Turning on/off the Screen

1. While the screen is on, short-press the [Power] button to turn off the screen.
2. Short-press [Power] button again to turn it on.



This device has an automatic screen timeout feature to reduce battery consumption. The screen will turn off when there is no user input during the period defined in [Menu - Settings - Power - Screen Off]. (See Page 34.)

### Reset Function

1. In cases of unexpected device failure or if the device becomes unresponsive, press [Power] for 7 seconds to force a shutdown. The device can be restarted after the shutdown is complete.



Resetting the device will not affect the stored data or time setting. Do not use the reset function while the product is in use. Doing so may corrupt the data on the device.

# Charging

### Charging via Computer

1. The device will charge automatically when connected to a computer via the 5-pin micro-USB cable.



Depending on computer specifications, the device will charge only when the computer is turned on.

When charging via computer connection, the charging time may vary depending on whether the device is turned on or off.

Some computers in power-saving mode may not charge the device.

The built-in battery will gradually lose capacity over time with repeated charging/discharging.

Do not use any cables other than the 5-pin micro-USB cable that is included in the package. Using an unauthorized cable may cause a malfunction.

### Charging via Adapter

1. Charging is possible by using a 5V 2A output adapter (sold separately).



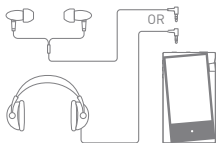
**Charging Time: Up to 4 hours (When the device is fully discharged and turned off and a 5V 2A adapter is used)**

A 5V 2A charger may be used. Using a fast charging adapter will not charge the product and may cause malfunctions.

# Connections

### Connecting to a 3.5mm Unbalance Port

1. Connect earphones or headphones to the 3.5mm unbalanced port.



### Connecting to a Computer

1. Turn on the device and your computer.
2. Connect the product to the computer with the 5-pin micro-USB cable to transfer media files.



For an optimal connection, quit any unnecessary programs before connecting the device to the computer.

Do not use any 5-pin micro-USB cable other than the one supplied with the device. Using an unauthorized cable may cause a malfunction.

Mac users need to download and install the MTP program from the Activo website in order for the device to pair with a Mac OS. [<http://www.activostyle.com>]

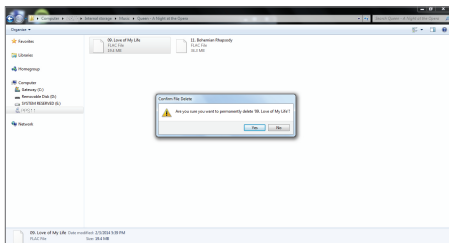
Both Windows and Mac, the device is only compatible with USB 2.0.





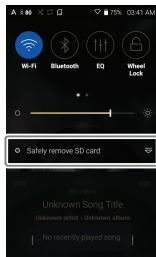
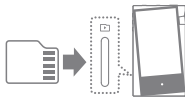
### Delete Files (or Folders) from the Device via Computer

1. Right-click the desired file/folder and then select [Delete].
2. Select [Yes] in the [Confirm File/Folder Deletion] window to delete the selected files/folders.



### Insert/Remove a microSD Card

1. Refer to the diagram and gently insert a microSD card into the microSD card slot.
2. To safely remove a microSD card, on the Home Screen, select [Safely remove SD card] from the Notification Panel or select [Unmount SD card] from [Menu - Settings - System Information].
3. Gently press in the microSD card to release it from the slot.



### Recommended microSD cards

SanDisk, Transcend



Maximum Capacity: 400GB

#### Notes on Inserting a microSD Card

- Do not force the microSD card into the slot. This may cause malfunction of the product and damage to the card.
- Do not repeatedly insert/remove the microSD card.
- If not inserted properly, the microSD card may cause product malfunctions and may get stuck in the product.

#### Notes on Removing a microSD Card

- Be sure to safely remove the microSD card from the device. Not following the proper procedure may corrupt data and cause serious damage to the system.
- Do not remove the microSD card during use. Doing so may cause malfunction, delete data and damage the microSD card.

#### Notes on Using a microSD Card

- If the microSD card is not recognized or functions improperly, format the card, preferably in the FAT32 system.
- Using cards other than the recommended microSD card may cause malfunctions.
- A microSD card is not included in the product package. microSD card must be purchased separately.

# Updating Firmware

### Wi-Fi Update / OTA (Over-the-Air)

1. Connect to a wireless network.
2. When a new firmware version is available, the screen will display a Firmware Update Guide window.
3. Select [Update] and choose the items for update.
4. Follow the on-screen directions to update the firmware.



For Wi-Fi connections, see Page 36.

The firmware update may not be successful if the battery level is too low. (A minimum battery level of 20% is required.)

Do not disconnect from the wireless network while downloading the firmware update. Doing so may cause data corruption and/or damage to the system.

If an error occurs or the notice in the Notification Panel disappears during an update, download the Firmware update can be initiated again through [Menu - Settings - Update - System].

# Basic Operations

### LCD Touchscreen

1. This device features a LCD touchscreen that allows you to perform operations by touch.

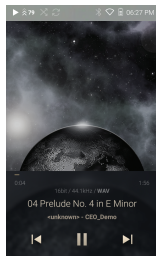
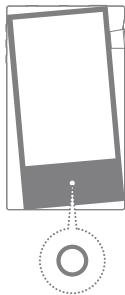
Interact with the device by touching the screen to access various features.



To prevent damage to the screen, do not use a sharp object or excessive force.

### Return to the Home Screen

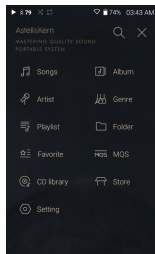
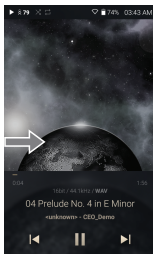
1. Press [O] to go to the Home Screen.



Home Screen

## Menus

1. Touch and hold, then drag your finger to the right or left in the home screen to display menus.



**!** The CD library menu is displayed when music files are extracted with AK CD-RIPPER and songs are stored in the Ripping folder.

## Notification Bar

