

Q95M-200 GAS-FIRED DIRECT VENT MODULATING HOT WATER BOILER

Dunkirk



DUNKIRK BOILERS
85 Middle Rd.
Dunkirk, NY 14048
www.dunkirk.com

An  **ECR International Brand**
An ISO 9001-2000 Certified Company



GAS-FIRED DIRECT VENT MODULATING HOT WATER BOILER

INSTALLATION MANUAL

P/N# 240006103D, Rev. 1.1 [04/06] • Printed in USA • Made In USA

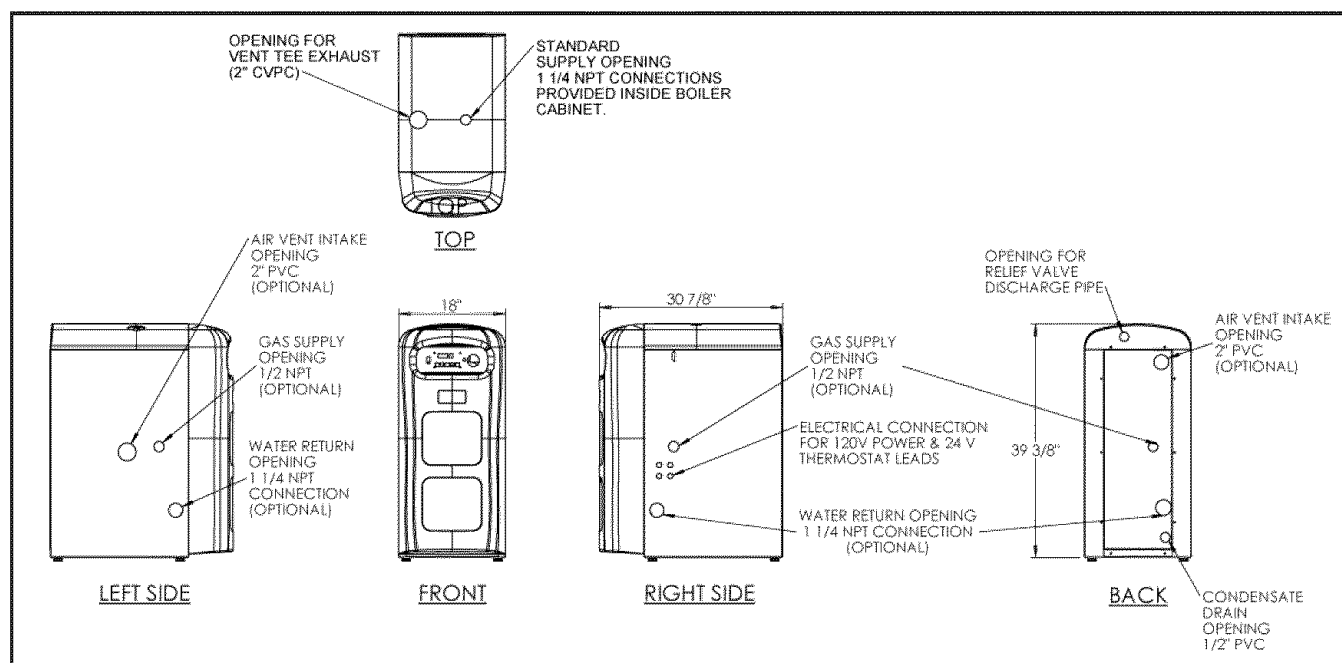


TABLE OF CONTENTS

I	Introduction.....	3
II	Safety Symbols.....	4
III	Rules for Safe Installation and Operation.....	4
IV	Boiler Ratings and Capacities.....	5
V	Before Installing The Boiler.....	6
VI	Placing The Boiler.....	9
VII	Near Boiler Piping.....	10
VIII	Combustion Air and Vent Pipe.....	11
IX	Gas Supply Piping.....	13
X	Electrical Wiring.....	15
XI	Controls and Accessories.....	16
XII	Maintenance and Cleaning.....	18
XIII	Boiler Wire Diagram.....	21
XIV	Piping and Wiring Appendix.....	22

**Keep this manual near boiler
and retain for future reference.**

I - INTRODUCTION

This appliance is a gas-fired direct vent modulating cast aluminum hot water boiler. A revolutionary cast aluminum monoblock heat exchanger means better heat transfer and thermal storage than similarly sized cast iron boilers, which results in higher efficiency. The heating system water absorbs large amounts of heat from the cast aluminum heat exchanger, cooling the flue gases and causing condensation. Sealed combustion, premix gas burner, and low flame temperature means drastically reduced CO and NOx emissions, which contribute to a cleaner and healthier environment.

This appliance, unlike normal residential atmospheric and induced draft units, takes its combustion air directly from the outdoors (sealed combustion) and does not compete with building occupants for fresh air. Sealed combustion (also known as "direct vent") is the safest and best way to obtain plenty of clean combustion air. The forced draft fan draws in the outside combustion air to mix with gas, which flows into the pre-mix burner and combusts. The fan then forces the resulting flue gases from the boiler unit and provides a positive removal of the flue gases from the building through inexpensive and readily available PVC and CPVC pipes.



II - SAFETY SYMBOLS AND WARNINGS

The following defined symbols are used throughout this manual to notify the reader of potential hazards of varying risk levels



Indicates an imminently hazardous situation which, if not avoided, will result in death or serious injury.



Indicates a potentially hazardous situation which, if not avoided, could result in death or serious injury.



Indicates a potentially hazardous situation which, if not avoided, may result in minor or moderate injury. It may also be used to alert against unsafe practices.

IMPORTANT: Read the following instructions completely before installing!!

III. RULES FOR SAFE INSTALLATION AND OPERATION



This appliance has been equipped for residential installations. If used for commercial applications, any and all additional code requirements must be adhered to for installation. This may require additional controls, including but not limited to an external water cut off, a manual reset high temperature limit, and wiring and/or piping modifications. The manufacturer is not responsible for any field installation changes made to a boiler installation which are not described or acknowledged in this manual.

IMPORTANT: Failure to follow these instructions could cause a malfunction of the boiler and result in death, serious bodily injury, and/or property damage. For assistance or additional information, consult a qualified installer, service agency, or the gas supplier.



This boiler contains ceramic fiber materials. Use care when handling these materials per the instructions specified under "Modulating Burner" in Section XI of this manual.

1 Check all applicable state and local building codes and utility company requirements before installation. This installation must conform with these requirements in their entirety. In the absence of these codes, use NFPA installation codes and good industry practice.

2 Before servicing the boiler, allow it to cool. Always shut off any electricity and gas supply connected to the boiler prior to servicing.

3 Inspect gas line for leaks.

4 Be certain gas input rate is correct. Overfiring may result in early failure of the boiler components. This may cause dangerous operation. Underfiring may result in too much air for the pre-mix burner causing poor or loss of combustion.

5 Never vent the products of combustion from this boiler to an enclosed space. Always vent to the outdoors. Never vent to another room or to inside a building.

6 Be sure there is adequate outdoor air supply to boiler for complete combustion.

7 Follow a regular service and maintenance schedule for efficient and safe operation.

8 Keep boiler area clean of debris and free of combustible and flammable materials.

9 Proper through-the-wall or through-the-roof combustion venting shall be in accordance with the materials and methods described in this manual. Installation must comply with local codes.

10 This boiler and related hot water heating systems are not do-it-yourself items. They must be installed and serviced by qualified professionals. Rat-

IV - BOILER RATINGS AND CAPACITIES

TABLE 1: SEA LEVEL RATINGS - NATURAL AND PROPANE GASES

Boiler Input Rate (MBH) ⁽¹⁾		Heating Capacity (MBH) ⁽¹⁾⁽²⁾	Net I=B=R Rating (MBH) ⁽¹⁾	AFUE ⁽²⁾	Flue Diameter	Shipping Wt.
High Fire	200	190	165	95%	2" CPVC & 3" PVC	284 lbs.
Low Fire	80	76	66			

⁽¹⁾ 1 MBH = 1,000 Btuh (British Thermal Units Per Hour)

⁽²⁾ Heating Capacity and AFUE (Annual Fuel Utilization Efficiency) are based on DOE (Department of Energy) test procedures.

TABLE 2: 95M-200 HIGH ALTITUDE DERATE CHART

Boiler Input Rate (MBH)	Altitude (In Feet)							
	3,000	4,000	5,000	6,000	7,000	8,000	9,000	10,000
High Fire	196	192	188	184	181	177	174	170
Low Fire	78.4	76.8	75.3	73.8	72.3	70.9	69.5	68.1

ings above are for sea level applications. The boiler automatically derates input at a rate of 2% for every 1000 feet above an elevation of 2000 feet (see Table 2). The boiler will also derate relative to the calorific value of the gas being used. Use the formula specified in "Measure The Natural Gas Input Rate" in Section VII of the Control Manual and Operating Instructions (P/N# 240006104) to determine the proper rate due to derated gas. No alterations to the boiler are required for altitudes above sea level.

These low pressure gas-fired hot water boilers are design certified by CSA International, for use with natural and propane gases. The boilers are constructed and hydrostatically tested for a maximum working pressure of 50 PSIG (pounds per square inch gauge) in accordance with ASME (American Society of Mechanical Engineers) Boiler and Pressure Vessel Code Section IV Standards for heating boilers.

The Boilers are certified in accordance with ANSI (American National Standards Institute) Z21.13 standards as gas-fired, direct vent, condensing, hot water boilers.

The Heating Capacity indicates the amount of heat available after subtracting the losses up the stack. Most of this heat is available to heat water. A small portion is heat loss from the jacket and surfaces of the boiler, and it is assumed that this heat stays in the structure. The Net I=B=R Rating represents the portion of the remaining heat that can be applied to heat the radiation or terminal units (i.e., finned tube baseboard, cast iron radiators, radiant floor, etc.) The difference between the Heating Capacity and the Net I=B=R Rating, called the piping and pickup allowance, establishes a reserve for heating the volume of water in the system and offsetting heat losses from the piping. The Net I=B=R Ratings shown are based on a piping and pickup factor of 1.15 in accordance with the I=B=R Standard as published by the Hydronics Institute. The Net I=B=R Rating of the boiler selected should be greater than or equal to the calculated peak heating load (heat loss) for the building or area(s) served by the boiler and associated hot water heating systems. The manufacturer should be consulted before selecting a boiler for installations having unusual piping and pickup requirements.

V - BEFORE INSTALLING THE BOILER

Review the following before installing the boiler.

CODES

This boiler product is a gas-fired, direct vent, condensing boiler and must be installed in accordance with all applicable federal, state and local building codes including, but not limited to the following:

United States - Installation shall conform with National Fuel Gas Code (NFPA-54/ANSI Z223.1-latest edition)

Canada - Installation shall be in accordance with CSA-B149.1 and .2 installation codes.

Where required by the authority having jurisdiction, the installation must conform to the ASME Safety Code for Controls and Safety Devices for Automatically Fired Boilers, No.CSD-1.

The installation must conform to the requirements of the authority having jurisdiction or, in the absence of such requirements, to the National Fuel Gas Code, ANSI Z223.1 - latest revision.

Installers - Follow local regulations with respect to installation of Carbon Monoxide Detectors. Follow maintenance recommendations in this manual.

BOILER SIZING

- Check to be sure you have selected the boiler with the proper capacity before continuing the installation. The I=B=R Rating of the boiler selected should be greater than or equal to the calculated peak heating load (heat loss) for the building or area(s) served by the boiler and associated hot water heating systems. See "Table 1: Sea Level Ratings - Natural and Propane Gases" in Section IV of this manual.
- Heat loss calculations should be based on approved industry methods.

CONSIDERATIONS FOR BOILER LOCATION

Before selecting a location for the boiler, the following should be considered. Each boiler considered for installation must be:

- Supplied with the correct type of gas (natural gas or propane).
- Connected to a suitable combustion air intake piping system to supply the correct amounts of fresh (outdoor) air for combustion (15' minimum length/60' maximum length).
- Connected to a suitable venting system to remove the hazardous products of gas combustion (15' minimum length/60' maximum length).
- Connected to a suitable hot water heating system.
- Supplied with a suitable electrical supply for all boiler motors and controls.
- Connected to a properly located thermostat or operating control (not included with boiler).
- Placed on level surface (must NOT be installed on carpeting).
- Condensate drain line must be pitched down to floor drain or external condensate pump with reservoir at 1/4" per foot (wood frame or blocks may be used to raise boiler).

LOCATING THE BOILER

1. Select a location which is level, central to the piping systems served and as close to the vent and air intake terminals as possible.
2. Accessibility clearances, if more stringent (i.e. larger clearances) than required fire protection clearances, must be used for the boiler installation. Accessibility clearances may be achieved with the use of removable walls or partitions.
3. The boiler is approved for installation in closets and on combustible floors. This boiler shall NOT be installed on carpeting.
4. The clearances shown in Table 3 below indicate required clearances per CSA listing.

TABLE 3: BOILER CLEARANCES*

Dimension	Combustible Construction	Accessibility/Cleaning	Service
Top	1"	8"	8"
Left Side	1"	24"	24"
Right Side	1"	-	-
Base	1"	-	-
Front	0	24"	24"
Back	6"	-	-
Intake/Vent Piping	0	-	-
Near Boiler Hot Water Piping	1"	-	-

* All distances measured from the cabinet of the boiler.

A minimum 1" clearance must be maintained between combustible construction and each of the right, top and back surfaces of the boiler. Allow at least 24" at the front and left side and 8" at the top for servicing. No combustible clearances are required to venting or combustion air intake piping.

5. Equipment shall be installed in a location which facilitates the operation of venting and combustion air intake piping systems as described in this manual.

6. Advise owner of boiler to keep venting and combustion air intake passages free of obstructions. Both the venting and combustion air intake piping systems connected to the outdoors must permit flow through the piping systems without restrictions for the boiler to operate.

7. The boiler shall be installed such that the automatic gas ignition system components are protected from water (dripping, spraying, rain, etc.) during

operation and service (circulator replacement, control replacement, etc)

8 The boiler must be located where ambient room temperatures (minimum possible temperatures where boiler is installed assuming boiler is not in operation and therefore contributes no heat to the space) are always at or above 32°F to prevent freezing of liquid condensate

COMBUSTION AIR AND VENT PIPE REQUIREMENTS

Figure 1 - Roof Vent/Intake Terminations

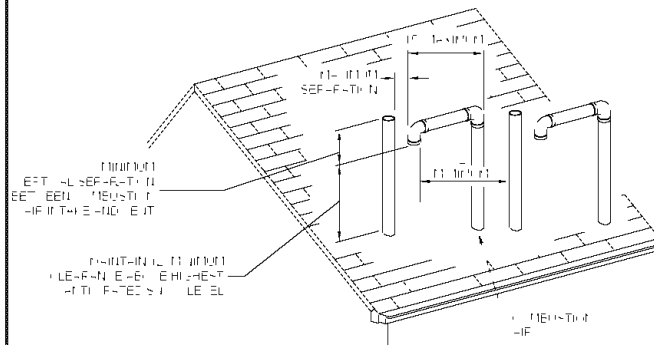
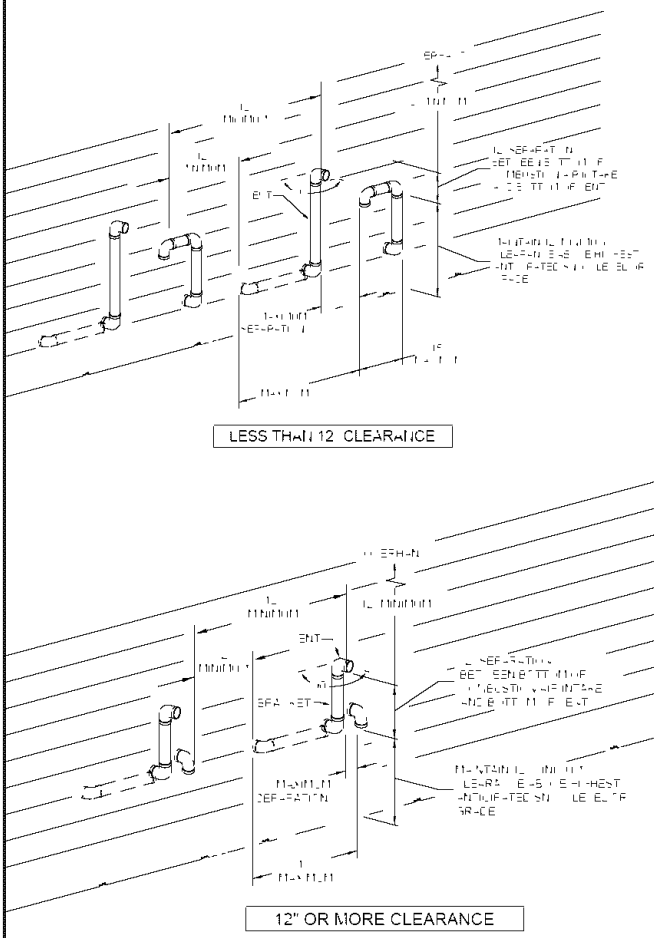


Figure 2 - Sidewall Vent/Intake Terminations

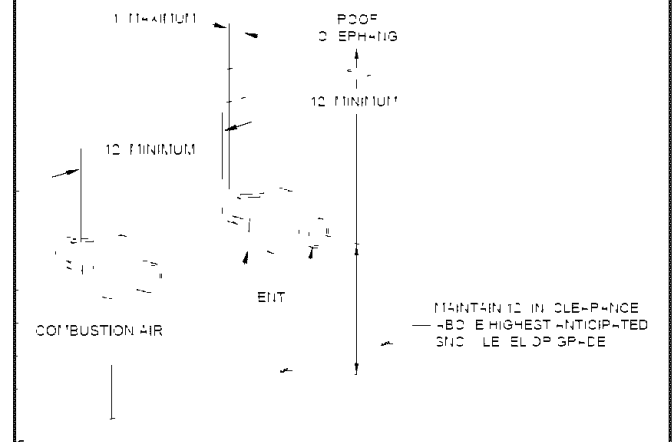


This boiler requires a dedicated direct vent system. In a direct vent system, all air for combustion is taken directly from outside atmosphere, and all flue products are discharged to outside atmosphere.

Combustion air and vent pipe connections must terminate together in the same atmospheric pressure zone, either through the roof or sidewall (roof termination preferred). See Figures 1 and 2 for required clearances.

If the concentric vent termination is being used, refer to Figure 3 for proper setup.

Figure 3 - Concentric Vent Terminations



CAUTION

Keep boiler area clean of debris and free of flammable and combustible materials, vapors, and liquids.

WARNING

Failure to follow these warnings could result in fire, property damage, personal injury, or death.

- When vent pipe is exposed to temperatures below freezing, such as when it passes through an unheated space or when a chimney is used as a chaseway, vent pipe must be insulated with 1/2" Armaflex or equivalent. In extremely cold climate areas, use 3/4" Armaflex or equivalent.
- Combustion air must be clean outdoor air. Combustion air must not be taken from inside the structure because that air is frequently contaminated by halogens, which include fluorides, chlorides, phos-

(Continued on next page)

⚠ WARNING ⚠

(Continued from previous page)

phates, bromides and iodides. These elements are found in aerosols, detergents, bleaches, cleaning solvents, salts, air fresheners, paints, adhesives, and other household products.

- Locate combustion air inlet as far away as possible from swimming pool and swimming pool pump house. All combustion air and vent pipes must be airtight and watertight. Combustion air and vent piping must also terminate exactly as shown in Figures 1 and 2. If a concentric vent termination is being used, refer to Figures 3 through 5 for proper setup.
- Vent connections serving appliances vented by natural draft shall not be connected into any portion of mechanical draft systems operating under positive pressure.
- Solvent cements are combustible. Keep away from heat, sparks, or open flame. Use only in well ventilated areas. Avoid breathing in vapor or allowing contact with skin or eyes.

Figure 4 - Concentric Vent w/Dimensions

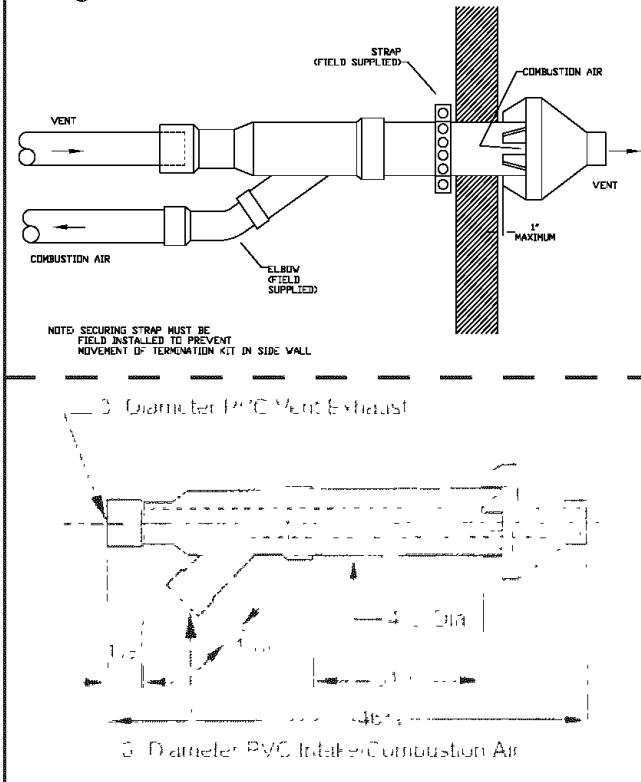
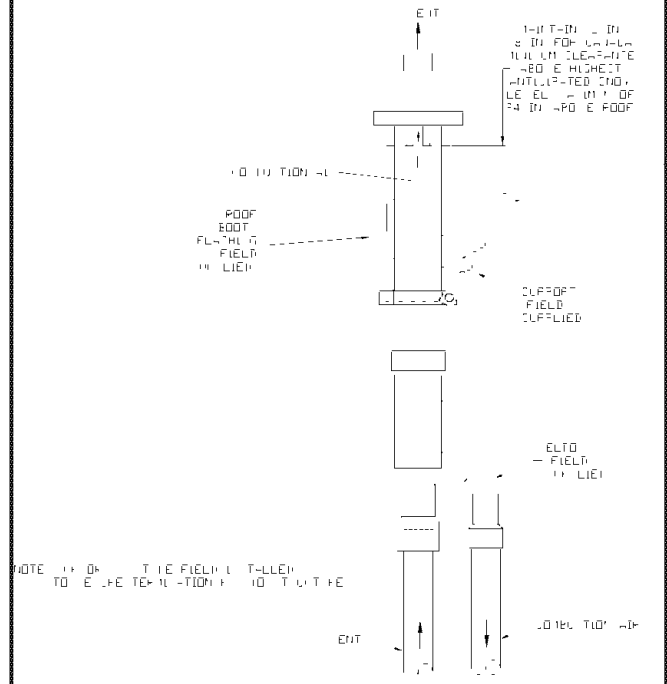


Figure 5 - Concentric Vent Roof Installation



CONDENSATE DRAIN REQUIREMENTS

At the rear of the unit a ½" PVC pipe nipple with NPT threads is provided for the attachment of the condensate drain line. Attach the ½" PVC tee in the parts bag to act as a vent as shown. Attach ½" PVC from this point to either a drain or an external condensate pump (not furnished). If the drain level is above the condensate trap, a condensate pump must be used. The condensate pump must be designed for a flue gas condensate application. The condensate drain line must be pitched down to the floor at a minimum of ¼" per foot and must be routed within the conditioned space to avoid freezing of condensate and blockage of the drain line. If the unit will be started immediately upon completion of installation, prime trap by filling with water until water is seen at the vent.

NOTES:

1. Condensate trap is integral to the boiler.
2. Wood frame or blocks may be used to raise the boiler to maintain drain pitch or to be above external condensate pump reservoir.
3. There is a 115 volt AC receptacle provided on the control panel to provide power for an external condensate pump (if needed).

FOUNDATION REQUIREMENTS

Boiler must be placed on level surface. Boiler is **NOT** to be installed on carpeting.

NOTES:

1. If boiler is not level condensate drain lines will not function properly. Adjustable feet are located on the boiler to make up for minor surface irregularities or tilt.
2. Wood frame or blocks may be used to raise boiler to maintain drain pitch or to be above external condensate pump reservoir.

REMOVAL OF EXISTING BOILER FROM COMMON VENT SYSTEM

When an existing boiler is removed from a common venting system, the common venting system is likely to be too large for proper venting of the appliances remaining connected to it. At the time of removal of an existing boiler, the following steps shall be followed with each appliance remaining connected to the common venting system placed in operation, while the other appliances remaining connected to the common venting system are not in operation.

1. Seal any unused openings in the common venting system.
2. Visually inspect the venting system for proper size and horizontal pitch and determine there is no blockage or restrictions, leakage, corrosion and other deficiencies which could cause an unsafe condition.
3. When it is practical, close all building doors and windows and all doors between the space

in which the appliances remaining connected to the common venting system are located and other spaces of the building. Turn on clothes dryer and any appliance not connected to the common venting system. Turn on any exhaust fans, such as range hoods and bathroom exhaust, so they will operate at maximum speed. Do not operate a summer exhaust fan. Close fire dampers.

4. Place in operation the appliance being inspected. Follow the lighting instructions. Adjust thermostat so appliances will operate continuously.

5. Test for spillage at the draft hood relief opening after 5 minutes of main burner operation. Use the flame of a match or candle, or the smoke from a cigarette, cigar or pipe.

6. After it has been determined that each appliance remaining connected to the common venting system properly vents when tested as outlined above, return doors, windows, exhaust fans and any other gas-burning appliance to their previous condition of use.

7. Any improper operation of the common venting system should be corrected so the installation conforms with the National Fuel Code, NFPA-54/ANSI -Z223.1-latest revision, or section 5 of CSA-B149 for Canadian standards. When resizing any portion of the common venting system, the common venting system should be resized to approach the minimum size as determined using the appropriate tables in part 11 in the National Fuel Gas Code, NFPA-54/ANSI-Z223.1-latest revision, or section 5 of CSA-B149 for Canadian standards.

VI - PLACING THE BOILER



WARNING

The boiler must be located on a surface that can support the weight of the installed boiler.

The boiler should be placed to provide the most direct connections to the combustion air, vent and system piping as possible.

Place crated boiler as close to selected location as possible and uncrate boiler. The uncrated boiler

may be moved into position with an appliance dolly or 2-wheel hand truck. The dolly or hand truck should be inserted under the right hand side of the boiler. It is possible to slide the boiler for a short distance on a smooth floor or surface.

NOTE: Refer to "Locating The Boiler" in Section V of this manual for required clearances for servicing and maintenance.

VII - NEAR BOILER PIPING

IMPORTANT: For piping examples using the Gas-Fired Direct Vent Modulating Hot Water Boiler, see the *Piping Appendix* in Section XIV of this manual.



Copper supply and return piping must **NOT** be installed directly into aluminum boiler section castings due to galvanic corrosion between dissimilar metals. Iron or steel bushings or pipe nipples should be used between copper system piping and boiler to make final connection to boiler. Also, the use of dielectric unions is acceptable. The packaged boiler is furnished with iron piping where necessary for the supply and return connections.

When the installation of the boiler is for a new heating system, first install all of the radiation units (panels, radiators, baseboard, or tubing) and the supply and return mains. After all heating system piping and components have been installed, make final connection of the system piping to the boiler.

A hot water boiler installed above radiation level must be equipped with a low water cut off device. A periodic inspection is necessary, as is flushing of float type devices, per low water cut off manufacturers specific instructions. This boiler is factory equipped with a manual reset probe-type low water cut off.

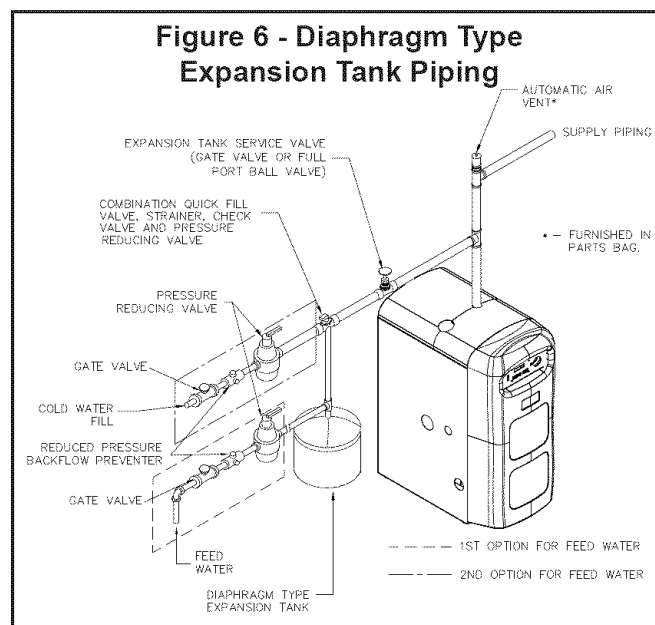
EXPANSION TANK AND MAKE-UP WATER



Non-potable water only piped directly to boiler.

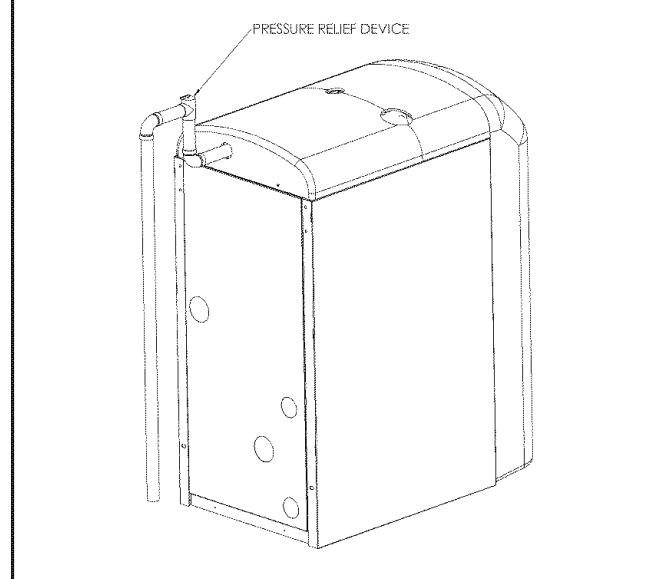
Determine required system fill pressure, system design temperature, and system water content. Boiler contains 2.6 gallons (US). Size expansion tank accordingly. Consult expansion tank manufacturer for proper sizing information. Connect properly sized expansion tank (not furnished) as shown in Figure 6 for diaphragm type expansion tank. For diaphragm type expansion tanks, adjust the tank air pressure to match the system fill pressure. Install air vent (furnished) as shown for diaphragm type expansion tank system only. Install make-up water connections as shown and per local codes. If a pressure reducing valve is used, adjust to match the system fill pressure. In connecting the cold make-up water supply to the boiler, make sure that clean water supply is available. When the wa-

ter supply is from a well or pump, a sand strainer should be installed at the pump.



PRESSURE RELIEF VALVE / TEMPERATURE PRESSURE GAUGE

Figure 7 - Relief Valve Discharge Piping



The boiler is furnished with a relief valve in the boiler parts bag. Provide $\frac{3}{4}$ " piping from the supplied relief valve to a local floor drain, but leave an air gap between piping and drain. No shutoff of any description shall be placed between safety relief valve and the boiler, or on the discharge pipes

between such safety valve and the atmosphere. Installation of the safety relief valve shall conform to ANSI/ASME Boiler and Pressure Vessel Code, Section IV. The manufacturer is not responsible for any water damage.

SUPPLY AND RETURN LINES

The packaged boiler unit is set up to receive 1¼" NPT return piping from the rear of the unit with an option for left or right return connections. 1¼" NPT supply piping exits the boiler jacket at the top of the unit.

NOTE: Circulator pump and isolation valves are furnished within a carton inside the boiler cabinet and can be installed at the installer preferred location.

CONDENSATE DRAIN PIPING

The condensate trap is integral to the boiler.

Provide ½" pipe and fittings for PVC condensate drain line. Condensate drain line to be pitched down to floor drain at a minimum of ¼" per foot.

The ½" diameter schedule 40 PVC condensate drain piping and pipe fittings must conform to ANSI standards and ASTM D1785. Schedule 40 PVC cement and primer must conform to ASTM D2564. In Canada, use CSA or ULC certified schedule 40 PVC drain pipe and cement.

A condensate pump with a reservoir (not furnished) may be used to remove condensate to a drain line (sanitary line) above boiler if a floor drain is not available or is inaccessible.

FILLING CONDENSATE TRAP WITH WATER

IMPORTANT: On initial start up the condensate trap must be manually filled with water.

The following are the steps required to initially fill the condensate trap for start up, these steps are only required at the initial start up or if maintenance requires draining of the condensate trap:

1. Pour about 1 cup of cold tap water into the vent drain line.
2. Excess water should go through the overflow and out through the condensate drain line. Verify proper operation of the drain line (or external condensate pump if used).
3. Reinstall the vent drain line.

CHILLED WATER PIPING

The boiler, when used in connection with a refrigeration system, must be installed so the chiller medium is piped in parallel with the boiler with appropriate valves to prevent the chilled medium from entering the boiler.

The boiler piping system of a hot water boiler connected to heating coils located in air handling units where they may be exposed to refrigerated air circulation must be equipped with flow control valves or other automatic means to prevent gravity circulation of the boiler water during cooling cycle.

VIII - COMBUSTION AIR AND VENT PIPE

CONNECTIONS AND TERMINATION

For boilers connected to gas vents or chimneys, vent installations shall be in accordance with Part 7, Venting of Equipment, of the National Fuel Gas Code, ANSI Z223.1-latest revision, CSA-B149.1 and B149.2, and applicable provisions of the local building codes.

Provisions for combustion and ventilation air must be in accordance with Section 5.3, Air For Combustion and Ventilation, of the National Fuel Gas Code, ANSI Z223.1-latest revision, CSA-B149.1 and B149.2, or applicable provisions of the local building code.

These boilers require a dedicated direct vent system. All air for combustion is taken directly from outdoors through the combustion air intake pipe. All flue products are discharged to the outdoors through the vent pipe. Insulate lengths of combustion pipe in unconditioned areas.

1. See Figures 1 through 5 for combustion air and vent pipe roof and sidewall termination (roof termination is preferred). Combustion air and vent pipes must terminate together in same atmospheric pressure zone as shown. Construction through which vent and air intake pipes may be installed is a maximum 24" and a minimum ¼" thickness.

2. Combustion air and vent pipe fittings must conform to American National Standards Institute (ANSI) standards and American Society for Testing and Materials (ASTM) standards D1784 (schedule-40 CPVC), D1785 (schedule-40 PVC), D2665 (PVC-DWV), D2241 (SDR-21 and SDR-26 PVC), D2661 (ABS-DWV), or F628 (schedule-40 ABS). Pipe cement and primer must conform to ASTM standards D2564 (PVC) or D2235 (ABS).

In Canada construct all combustion air and vent pipes for this unit of CSA or ULC certified schedule-40 CPVC, schedule-40 PVC, PVC-DWV or ABS-DWV pipe and pipe cement. **SDR pipe is NOT approved in Canada.**

3. Combustion air and vent pipe connections on boiler are 2" but must increase to 3". Due to potential for flue gas temperatures above 155°F, the first 30" of supplied vent pipe is CPVC while the remaining vent pipe can be PVC. Any replacement of the first 30" of vent pipe must be made with CPVC.

NOTE: The exhaust transition from 2" pipe to 3" pipe must be made in a vertical run. Transition pieces are not included. (See Figure 8 for details.)

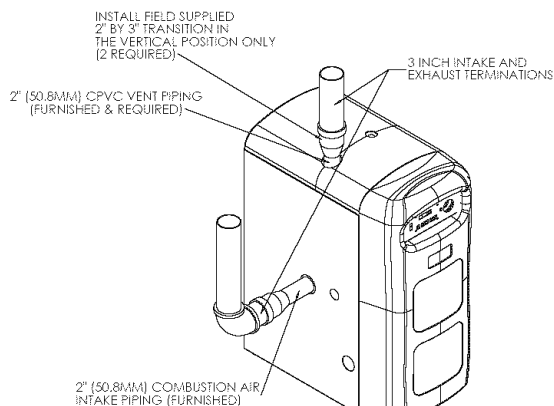
COMBUSTION AND VENT PIPING LENGTH

3" Pipe Min. Venting	3" Pipe Max. Venting
15 ft. equivalent length	60 ft. equivalent length

The length of pipe is counted from the end of the supplied 2" CPVC pipe exiting the boiler. The combustion air supply pipe must terminate at the same location as the exhaust pipe.

Reduce the maximum vent length by 5' per each 90° elbow.

Figure 8 - Combustion Air and Vent Piping



1. Combustion air piping to be pitched back to boiler at minimum 1/4" per foot from vent terminals so that all moisture in vent piping drains to boiler. Pipes must be pitched continuously with no sags or low spots where moisture can accumulate and block the flow of flue gas. Combustion air and vent pipes must be airtight and watertight.

2. Consideration for the following should be used when determining an appropriate location for termination of combustion air and vent piping:

- Comply with all clearances required.
- Termination should be positioned where vent vapors will not damage plants/shrubs or air conditioning equipment.
- Termination should be positioned so that it will not be effected by wind eddy, air born leaves, snow, or recirculated flue gases.
- Termination should be positioned where it will not be subjected to potential damage by foreign objects, such as stones, balls, etc.
- Termination should be positioned where vent vapors are not objectionable.
- Put vent on a wall away from the prevailing winter wind. Locate or guard the vent to prevent accidental contact with people or pets.
- Terminate the vent above normal snowline. Avoid locations where snow may drift and block the vent. Ice or snow may cause the boiler to shut down if the vent becomes obstructed.
- Under certain conditions, flue gas will condense, forming moisture, and may be corrosive. In such cases, steps should be taken to prevent building materials at the vent from being damaged by exhaust of flue gas.

3. The venting system shall terminate at least 3' above any forced air inlet (except boiler's combustion air inlet) within 10'. The venting system shall terminate at least 12" from any air opening into any building. The bottom of the vent shall be located at least 12" above grade. Termination of the vent shall be not less than 7' above an adjacent public walkway. The vent terminal shall not be installed closer than 3' from the inside corner of an "L" shaped structure. Termination of the vent should be kept at least 3' away from vegetation. The venting system shall terminate at least 4' horizontally from, and in no case above

or below, electric meters, gas meters, regulators, and relief equipment.

If multiple terminations are used, there must be a minimum of 12" between the exhaust of one termination and the air intake of the next termination. See Figures 1-3 for illustrations.

INSTALLATION

IMPORTANT: When transitioning from CPVC to PVC it is recommended to use Weld-On CPVC 724 or other cement approved for CPVC and PVC.

1. Attach combustion air intake piping to supplied 2" PVC Intake Connector. Attach vent piping to furnished 2" CPVC vent pipe.

NOTE: All pipe joints are to be water tight.

2. Working from the boiler to the outside, cut pipe to required length(s).

3. Deburr inside and outside of pipe.

4. Chamfer outside edge of pipe for better distribution of primer and cement.

5. Clean and dry all surfaces to be joined.

6. Check dry fit of pipe and mark insertion depth on pipe.

NOTE: It is recommended that all pipes be cut, prepared, and pre-assembled before permanently cementing any joint.

7. After pipes have been cut and pre-assembled, apply cement primer to pipe fitting socket and end of pipe to insertion mark. Quickly apply approved cement to end of pipe and fitting socket (over primer). Apply cement in light, uniform coat on the inside of socket to prevent buildup of excess cement. Apply second coat.

NOTE: Primer and cement will discolor jacket. Take precautions to protect jacket while cementing vent pipe.

8. While cement is still wet, insert pipe into socket with a ¼ turn twist. Be sure pipe is fully inserted into fitting socket.

9. Wipe excess cement from joint. A continuous bead of cement will be visible around perimeter of a properly made joint.

10. Handle pipe joint carefully until cement sets.

11. Support combustion air and vent piping a minimum of every 5' using pre-formed metal hanging straps. Support combustion air and vent piping so no weight is resting on the boiler jacket. Do not rigidly support pipes. Allow movement due to expansion and contraction.

12. Slope combustion air and vent pipes toward boiler a minimum of ¼" per linear foot with no sags between hangers.

13. Use appropriate methods to seal openings where vent and combustion air pipes pass through roof or side wall.

IX - GAS SUPPLY PIPING

CHECK GAS SUPPLY

The gas pipe to your boiler must be the correct size for the length of run and for the total BTU per hour input of all gas utilization equipment connected to it. See Table 4 at right for proper size. Be sure your gas line complies with local codes and gas company requirements.

The boiler and its individual shutoff valve must be disconnected from the gas supply piping system during any pressure testing of that system at test pressures in excess of ½ psig (3.5kPa).

The boiler must be isolated from the gas supply piping system by closing its individual manual shutoff valve during any pressure testing of the gas supply piping system at test pressures equal to or greater than ½ psig (3.5kPa).

TABLE 4: GAS PIPING SIZES

Natural Gas				
Pipe Length	Pipe Capacity - BTU/Hr. Input Includes Fittings			
	½"	¾"	1"	1¼"
20'	92,000	190,000	350,000	625,000
40'	63,000	130,000	245,000	445,000
60'	50,000	105,000	195,000	365,000

LP Gas				
Pipe Length	Pipe Capacity - BTU/Hr. Input Includes Fittings			
	Copper Tubing (O.D.)		Iron Pipe	
	⅝"	¾"	½"	¾"
20'	131,000	216,000	189,000	393,000
40'	90,000	145,000	129,000	267,000
60'	72,000	121,000	103,000	217,000

The length of pipe or tubing should be measured from the gas meter or propane second stage regulator.

In order for proper operation of the boiler, it is recommended that the line pressure be within the minimum and maximum values in Table 5.

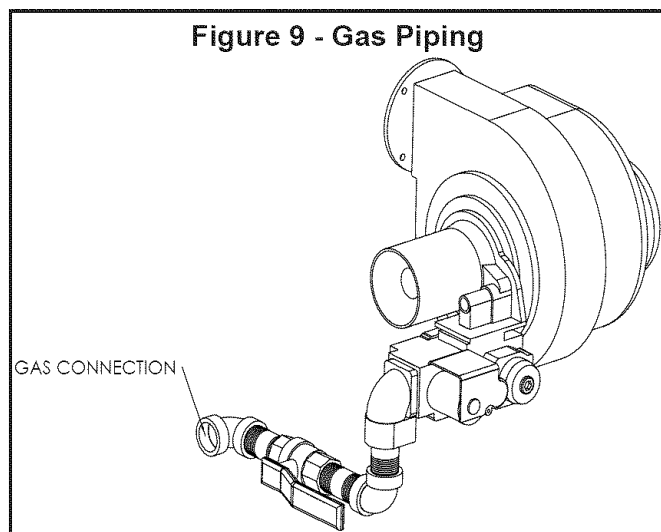
TABLE 5: GAS SUPPLY PRESSURE

Natural Gas	4" min. w.c.	10" max. w.c.
LP Gas	10" min. w.c.	14" max. w.c.

Please check line pressure while unit is running.

CONNECTING THE GAS PIPING

Refer to Figure 9 for the general layout at the boiler, which shows the basic fittings you will need. As shipped, the gas line enters the boiler through the rear but, as an option, it can be routed through either the right or left side panel.



The boiler is equipped with a 1/2" NPT connection on the gas valve for supply piping and 1/2" NPT ball valve for manual shut off. The following rules apply for boiler piping:

1. Use only those piping materials and joining methods listed as acceptable by the authority having jurisdiction, or in the absence of such requirements, by the National Fuel Gas Code, ANSI Z223.1- latest revision. In Canada, follow the CAN/CGA B149.1 and .2 Installation Codes for Gas Burning Appliances and Equipment.

2. Use pipe joint compound suitable for liquefied petroleum gas on male threads only.
3. Use ground joint unions.
4. Install a sediment trap upstream of gas controls.
5. Use two pipe wrenches when making the connection to the gas valve to keep it from turning.
6. Install a manual shutoff valve in the vertical pipe about 5' above floor outside the boiler jacket in addition to the shutoff valve supplied with the boiler.
7. Tighten all joints securely.
8. Propane gas connections should only be made by a licensed propane installer.
9. Two stage regulation should be used by the propane installer.
10. Propane gas piping should be checked out by the propane installer.
11. In addition to the components supplied with the boiler, it is recommended to use a 1/2" union and ball valve suitable for natural and propane gas upstream of the furnished 1/2" NPT ball valve to facilitate service on the unit.

CHECKING THE GAS PIPING

After all connections have been made, check immediately for leaks. Open the manual shutoff valve. Test for leaks by applying soap suds (or a liquid detergent) to each joint. Bubbles forming indicate leak. **Correct even the smallest leak at once.**



WARNING

Never use a match or open flame to test for leaks!!

X - ELECTRICAL WIRING

IMPORTANT: Wiring diagrams for the Gas-Fired Direct Vent Modulating Hot Water Boiler can be found in Section XIII of this manual.



WARNING

For your safety, turn off electrical power supply at service panel before making any electrical connections to avoid possible electric shock hazard. Failure to do so can cause severe personal injury or death.

IMPORTANT: Wiring must be N.E.C. Class 1. If original boiler wiring must be replaced, use only type 105°C wire or equivalent. Boiler must be electrically grounded as required by National Electrical Code ANSI/NFPA 70 - latest edition.

CODES

Installations must comply with National Electrical Code, any other national, state, provincial, or local codes or regulations, and, in Canada, with CSA C22.1 Canadian Electrical Code (Part 1) and any local codes.

LINE VOLTAGE CONNECTIONS

1. Connect 120 VAC power wiring to line voltage terminal strip on boiler control panel.
2. Provide and install a fused disconnect or service switch (15 amp recommended) as required by code.
3. Boiler circulator is shipped loose. Wire boiler circulator as shown in wire diagram label on boiler side panel.
4. When connecting a DHW circulator, connect wiring to line voltage terminal strip on boiler control panel.
5. Route all wires and conduits to the openings in the right jacket panel.

LOW VOLTAGE CONNECTIONS

1. Connect low voltage wiring to low voltage terminal strip as shown in the boiler wiring diagram.

2. Route all low voltage wires through grommetted opening on the right jacket panel.

THERMOSTAT

1. Connect room thermostat or end switch (isolated contact only) between terminals T1 and T2.
2. Install thermostat on inside wall away from influences of drafts, hot or cold water pipes, lighting fixtures, televisions, sunrays, or fireplaces.
3. Thermostat anticipator (if applicable):
 - A. If connected directly to boiler, set for 0.1 amps.
 - B. If connected to relays or other devices, set to match total electrical power requirements of connected devices. See device manufacturers' specifications and thermostat instructions for details.

OUTDOOR TEMPERATURE SENSOR

1. Connect outdoor temperature sensor between terminals A1 and A2 to enable outdoor reset operation of the boiler. If fixed temperature operation is required, do not install outdoor sensor.
2. Mount sensor on exterior wall, shielded from direct sunlight or flow of heat or cooling from other sources.
3. If desired, install a summer/winter switch across terminals A1 and A2. When the switch is closed, the boiler (space heating) circulator is disabled.
4. Route sensor wires through the holes provided on the right jacket panel of the boiler.

DHW AQUASTAT

Connect storage indirect water heater (DHW) aquastat between terminals DHW T1 and DHW T2.

XI - CONTROLS AND ACCESSORIES

This section provides a brief description of the key controls and accessories found in this boiler. See the Repair Parts Manual (P/N# 240006107) for illustrations and the Control Manual and Operation Instructions (P/N# 240006104) for a detailed sequence of operation and troubleshooting procedures.

ALUMINUM HEAT EXCHANGER

This appliance employs a cast aluminum heat exchanger that features a monoblock design. The monoblock design eliminates the need for mating sections and therefore eliminates leaks between sections. Since the heat exchanger is cast of aluminum instead of iron, it has better heat transfer properties which in turn lead to higher efficiency and cooler exhaust temperatures. These cooler exhaust temperatures create condensation of the flue gas, which would cause corrosion in traditional cast iron heat exchangers.

MAIN POWER SWITCH

This appliance features a main power switch located on the display panel. The main power switch is illuminated when it is receiving power and in the ON position. The only time that the switch should not be illuminated once the boiler is ready for use is when the casting temperature safety switch has been tripped or when the switch is in the OFF position.

MODULATING BOILER CONTROL

This appliance incorporates an integrated modulating control that senses the load necessary to heat a structure and therefore uses less fuel than a conventional fixed firing rate boiler when there is a lower than peak demand for heat. The control senses the supply water, return water, and outside air temperatures and calculates the load on the system. It then adjusts the firing rate to deliver the amount of heat that is needed at that particular time.

NTC SENSORS

The NTC sensors used with this appliance for measuring supply water, return water, and outside air temperature are specially configured to operate with the modulating boiler control.

MODULATING BLOWER

The modulating blower provides a means of introducing the gas/air mixture through the burner and

into the combustion chamber where combustion can begin and then out the exhaust vent where the combustion products are discharged to the outdoors. The blower is designed to communicate with the modulating control to run at variable speeds dependent on the heat load experienced by the heating system. The variable speeds create pressures felt by the gas valve and gas/air mixer that dictate how much fuel is introduced to the combustion process.

GAS CONTROL VALVE

The gas controls in this boiler have been developed for domestic heating appliances with premix burners and automatic direct burner ignition and are suitable for natural and LP gas. The gas controls perform all the functions required to safely regulate gas flow to the main burner of the boiler. The gas valve is directly connected to the gas/air mixer.

GAS/AIR MIXER

The venturi design of the gas/air ensures that there is always the correct mixture of air and gas.

MODULATING BURNER

This burner is designed to operate over the full range of input for this boiler. The burner can operate under normal (blue flame) and infrared conditions.



WARNING

The burner in this unit contains ceramic fibers which can be converted to a cancer-causing substance called cristobalite in very high temperature applications. When removing the burner, avoid breathing dust by using a NIOSH (*National Institute for Occupational Safety and Health*) certified dust respirator and wear long-sleeved, loose fitting clothing, gloves, and eye protection to avoid contact with skin and eyes. In case of contact with skin or eyes, wash or irrigate affected area immediately, then wash potentially contaminated clothing separately and rinse clothes washer thoroughly before reusing. For additional information, see the NIOSH homepage at www.cdc.gov/niosh/homepage.html.

DIRECT SPARK IGNITER

This appliance uses a direct spark igniter to ignite the fuel/air mixture in the combustion chamber and

sense flame during operation. The DSI is a durable, reliable component that resists breakage due to handling or inadvertent impact with other objects.

MANUAL RESET LOW WATER CUT OFF

This appliance employs a factory installed integral low water cut off (LWCO) that has to be manually reset if there is a low water condition. The LWCO senses water through a probe at the top of the boiler that sends a signal through the water to ground. If the signal is not sensed through the ground, the LWCO enters a lockout mode that disables the appliance. If the LWCO is in normal mode a red indicator light is illuminated on the LWCO panel in the boiler. During a low water condition, the red light goes out and the LWCO and control reset buttons on the display panel must be depressed to reset the LWCO.

NORMALLY CLOSED LWCO SWITCH

This switch is normally closed and spring loaded so that, when depressed, it opens, and closes again when pressure is removed. The switch is used as the manual reset for the LWCO. When tripped the LWCO will remain in lockout until the water level reaches the probe and the switch is depressed to an open state and then released to a closed state, which sends a signal to the LWCO to resume normal operation. The boiler control reset button must then be pressed to reset from a low water condition. The LWCO switch and control reset button are located on the display panel of the boiler.

HIGH LIMIT AQUASTAT CONTROL

The high limit aquastat control is a redundant safety limit control that determines the maximum boiler water temperature and also provides a means for protecting the boiler and heating system from unsafe operating conditions which could damage the boiler. The aquastat is mounted in the ½" NPT control well and ¾" x ½" bushing on the top of the front boiler section at the hot water outlet. The aquastat is tied in with the boiler control and is factory set at 200°F water temperature. The high limit setpoint is field adjustable and may be set anywhere between 100°F and 200°F, with the maximum high limit setpoint not exceeding 200°F. The field high limit setpoint adjustment for each installation depends on heating system requirements. The aquastat automatically resets when the boiler water temperature decreases ten degrees below the high limit setpoint value.

NOTE: Boiler operating temperature (temperature curve) is calculated and set in the parameters of the boiler control.

CASTING TEMPERATURE SAFETY SWITCH

In the event of lack of or loss of water in the boiler, the casting temperature safety switch (230°F set-point) installed on the top of the aluminum boiler section behind the supply piping shuts off the boiler by shutting off power to the boiler control and causes a failure code to be displayed on the digital readout. This fault requires manual reset of the casting temperature safety switch to restart the boiler and the reset to be pressed on the user interface panel. Verify that the boiler is properly filled with water before resetting this switch.

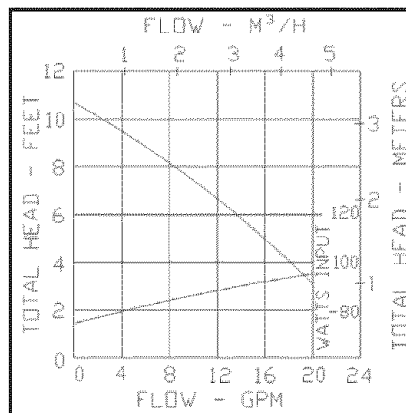


WARNING

Never run cold water into a hot, empty boiler.

CIRCULATOR PUMP

Every forced hot water system requires at least one circulating pump. The circulating pump imparts the necessary energy to move water through the closed loop supply and return piping systems, terminal heating equipment (finned tube radiators, etc.) and back through the boiler for reheating. To provide the required hot water flow rates, the circulator pump must be properly sized to overcome frictional losses (usually measured in feet of water, also referred to as "pump head loss") of the supply and return piping systems and boiler. The circulator pump is furnished in a carton within the boiler cabinet. The circulator(s) should always be located on the downstream ("pumping away") side of the expansion tank.



AIR PROVING BLOCKED VENT SAFETY ASSEMBLY

The air proving blocked vent safety assembly incorporates two pressure switches that are wired in series to discontinue operation of the appliance if there is a problem with the blower or venting system. The normally open switch closes upon the initiation of the blower and functions as an air proving switch. The

normally closed switch opens if there is a blockage in the combustion air intake or exhaust vent pipes.

DRAIN VALVE

The manual drain valve provides a means of draining the water in the heating system, including the boiler and hot water supply and return piping systems installed above the drain valve. This drain valve is installed in the return piping at the bottom front of the boiler section. Any piping installed below the elevation of this drain valve will require additional drain valves to be installed at low points in the piping systems in order to drain the entire system.

ASME RATED PRESSURE RELIEF VALVE

Each boiler must have a properly sized and installed American Society of Mechanical Engineers rated pressure relief valve. Water expands as it is heated by the burner/boiler sections. If there is no place for the water to expand its volume, (i.e., a properly sized and properly functioning expansion tank) pressure on the inside of the boiler and heating system will increase. The furnished relief valve will automatically open at 30 psig pressure to relieve the strain on the boiler and heating system from the increasing pressure. The pressure relief valve discharge must be piped with the same size

pipe as the valve discharge opening to an open drain, tub or sink, or other suitable drainage point not subject to freezing, in accordance with ASME specifications. Failure to provide the pressure relief valve with piping as herein described may cause water damage and/or serious bodily injury. The boiler manufacturer is not responsible for any water damage or personal injury.

EXTERNAL CONDENSATE PUMP (OPTIONAL)

For installations where there is no floor drain or other appropriate drainage receptacle available to receive condensate from the boiler, an external float activated condensate pump with integral sump is required. The condensate pump can be piped to a remote tie in point to a sanitary sewer system. For this application, the boiler must be installed so that proper pitch of piping to the external condensate reservoir (sump) can be accomplished. Use wood frame or blocks to raise boiler as required for proper installation.

CONCENTRIC VENT/AIR INTAKE TERMINATION (OPTIONAL)

The optional concentric vent/air intake termination utilizes a single opening per each appliance through the wall or roof of a structure.

XII - MAINTENANCE AND CLEANING

NOTE: Maintenance as outlined below can be performed by the owner unless otherwise noted.

The acidic nature of flue gases condensing on the aluminum boiler sections will cause the formation of aluminum oxide. This oxide formation is normal, is generally uniform throughout the boiler sections, and represents a negligible mass of aluminum that is consumed by oxidation during the life of the boiler. If left unchecked, this buildup may eventually cause blockage of the flue gas passages in the boiler sections, reducing efficiency, and ultimately shutting down the boiler due to lack of combustion air flow.

Regular service and maintenance by a qualified service agency must be performed at least once every 12 months to assure safe, trouble free operation and maximum efficiency.

BEGINNING OF EACH HEATING SEASON

1. Schedule an annual service call by a qualified service agency which includes:

- Examining flue passages between boiler sections, burner, and condensate lines, and cleaning (if necessary) by following the instructions in *"Annual Examination and Cleaning of Boiler Components"* in this section.
- Visually inspecting the venting and air intake system for proper operation, immediately repairing or replacing any sign of deterioration or leakage, and insuring proper reassembly and resealing of the system.
- Checking for and removing any obstruction to the flow of combustion air or venting of flue gases.
- Following the instructions in Sections V and VII of the Control Manual and Operating Instructions (P/N# 240006104), *"Putting The Boiler In Operation"* and *"Checkout Procedures And Adjustments."*
- Visually inspecting the condensate drain line for proper operation and checking for deteriorated or plugged condensate drain line.

- Checking all gasketed joints for leakage and tightening bolts or replacing gaskets as needed.
- Removing jacket front and top panels, checking for piping leaks around relief valve and other fittings, and repairing if found **WITH-OUT USING STOP LEAK COMPOUNDS**.

2. Check that boiler area is free from combustible materials, gasoline, and other flammable vapors and liquids.

3. Circulator pump and blower motor furnished with boiler are permanently lubricated from the factory and require no further lubrication. Additional or non-factory supplied pumps and/or motors should be lubricated according to the pump and/or motor manufacturer's instruction.

DAILY DURING HEATING SEASON

1. Check for and remove any obstruction to the flow of combustion air or venting of flue gases.

2. Check that boiler area is free from combustible materials, gasoline, and other flammable vapors and liquids.

MONTHLY DURING HEATING SEASON

1. Remove jacket front and top panels and check for piping leaks around relief valve and other fittings. If found, contact a qualified service agency. **DO NOT USE STOP LEAK COMPOUNDS**.

2. Test relief valve. Refer to valve manufacturers instructions packaged with relief valve.

3. Visually inspect the venting and air intake system for proper operation. If the vent or air intake show any signs of deterioration or leakage, contact a qualified service agency to repair or replace them immediately and to insure proper reassembly and resealing of the system.

4. Visually inspect the PVC condensate drain pipe for proper operation. If the drain pipe shows any signs of blockage, leakage, or deterioration contact a qualified service agency to clean, repair, or replace it immediately.

5. Check air vent(s) for leakage.

6. Where low water cut offs are used, a periodic inspection of the low water cut off is necessary,

including flushing of float type devices. Refer to low water cut off manufacturer's specific instructions.

ANNUAL SHUT DOWN PROCEDURE

1. Turn off gas to boiler as described "*To Turn Off Gas To Appliance*" in Section V of the Control Manual and Operating Instructions (P/N# 240006104).

2. If heating system is to remain out of service during freezing weather and does not contain antifreeze, drain system completely. If boiler will be exposed to freezing temperatures, drain condensate lines. Otherwise, do not drain system or boiler.

ANNUAL EXAMINATION AND CLEANING OF BOILER COMPONENTS



WARNING

The following service procedures must be performed by a qualified service agency using the Repair Parts Manual (P/N# 240006107) for reference. The boiler owner should not attempt these steps.

1. Before servicing, turn off electrical power to boiler at service switch. Close manual gas valve to turn off gas supply to boiler.

2. Examine flue passages by removing blower assembly from casting. The procedure for examining and cleaning the burner is described below.

Any buildup of sediment or aluminum oxide (white powdery or flaky substance) in the flue passages must be cleaned as follows:

- Remove jacket front and top panels.
- Confirm that manual gas valve is closed and disconnect gas line to gas valve at union. Then disconnect pressure switch hoses to gas valve and air inlet.
- Disconnect wires to gas valve and igniter.
- Loosen but do not remove five nuts attaching blower adapter assembly to boiler.
- Remove two igniter screws and very carefully remove the igniter.

- Remove five nuts and remove blower adapter assembly, burner, and gaskets.
- Aluminum oxide deposits are water soluble and may be rinsed away by inserting a hose into the burner opening of the casting and slowly running water through the flue side of the boiler and out the condensate drain.



Debris rinsed away by this method will exit through the condensate drain. Be wary of drain lines getting clogged and causing water to back up in the bottom of the casting.

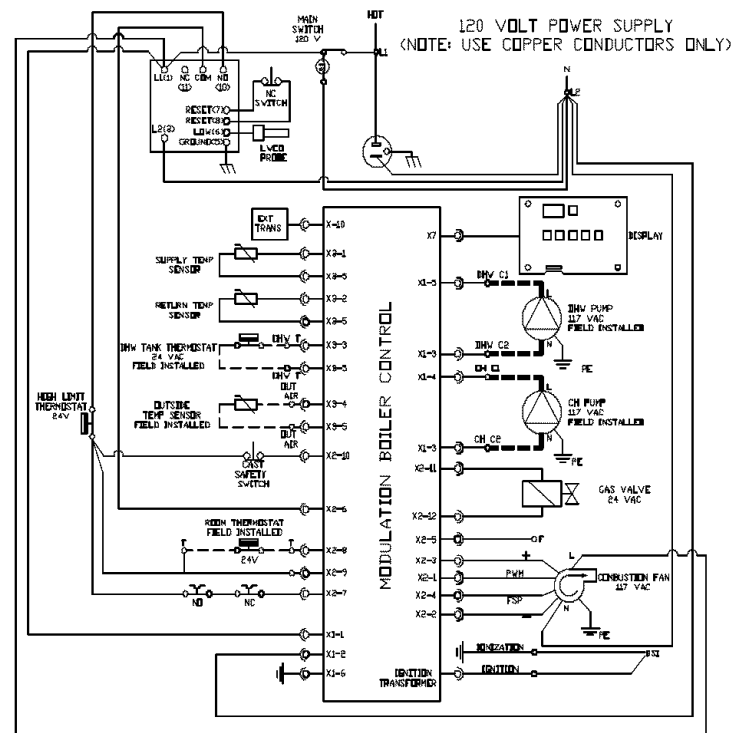
- Use a flexible handle nylon brush to loosen sediment and aluminum oxide on all accessible heating surfaces of the boiler. **Be sure not to get brush stuck in heat exchanger!**
- After brushing and rinsing, remove any remaining loosened sediment using a shop vacuum with a snorkel attachment.
- Inspect burner for any foreign matter in the flame ports or inside the burner. Any foreign matter should be removed by blowing with compressed air or vacuuming.
- Reinstall burner and gaskets and position blower adapter assembly over studs. Install five nuts but do not tighten. Reinstall igniter and igniter gasket and fasten with two screws. Tighten five nuts holding blower adapter assembly.
- Connect gas line to gas valve, pressure switch hose to gas valve and air inlet assembly, igniter wires, and gas valve wires.

3. Visually inspect the condensate trap. Any foreign material visible in the condensate lines needs to be cleaned out as described below:

- Inspect for sediment or blockage.
- Flush out with water or vacuum.
- Follow the instructions in Section VII, *"Filling The Condensate Trap With Water."*

4. Inspect the flue connector as follows:

- Loosen the clamp on the vent tee side of the 2" flexible coupling that connects the vent tee to the exhaust port.
- Inspect interior of vent tee. Any buildup of sediment on the inside surface must be cleaned.
- Reconnect 2" flexible coupling to vent tee.



TH-1	THERMOSTAT (MILLIVOLT)
TH-2	THERMOSTAT (24 VOLT)
TH-3	THERMOSTAT (LINE VOLTAGE) (VOLTAGE DE LIGNE)
TR-1	TRANSFORMER (120V/24V 40VA) TRANSFORMATEUR (120V/ 24V 40VA)
TR-2	TRANSFORMER (120V/24V 50VA) TRANSFORMATEUR (120V/ 24V 50VA)
MGV	MILLIVOLT GAS VALVE SOUPAPE A GAZ MILLIVOLT
LGV	24 VOLT GAS VALVE SOUPAPE A GAZ 24 VOLT
LGV-1	24 VOLT GAS VALVE SOUPAPE A GAZ 24 VOLT
PS	PRESSURE SWITCH INTERRUPTEUR DE PRESSION

MR-PS	MANUAL RESET PRESSURE SW. REMISE EN MARCHE MANUEL DE L'INTERPTEUR DE PRESSION
SD	STACK DAMPER REGISTRE DE LA CHEMINÉE
—○—	CONTROL TERMINAL BORNE DU CONTRÔLE
1 K	RELAY COIL BOBINE DU RELAIS
1 K1	RELAY CONTACTS CONTACTS DU RELAIS
1 K2	RELAY CONTACTS CONTACTS DU RELAIS
LS	LIMIT SWITCH INTERPTEUR DE LIMITE
F	FLAME SENSING FLAMME SENSING

MS MANUAL SWITCH
CIR INTERRUPTEUR MANUEL
CIR CIRCULATOR
ECO ENERGY CUT-OFF
ECO COUPE-CIRCUIT
LVCD LOW WATER CUT-OFF
LVCD POUR FERMER L'EAU
EWF ELECTRIC WATER FEEDER
EWF ALIMENTATEUR ELECTRIQUE D'EAU
PG POWER GENERATOR
PG GENERATEUR
PSC PILOT SAFETY COIL
PSC BOBBINE DE SURETE DE LA
VEILLEUSE
● WIRE CONNECTION
RACCORD DES FILS

* NOT ALL COMPONENTS LISTED ARE USED IN ALL CONTROL SYSTEMS.
(LES COMPOSANTES ÉNUMÉRÉES NE SONT PAS TOUTES UTILISÉES DANS TOUS LES SYSTÈMES DE CONTRÔLES.)

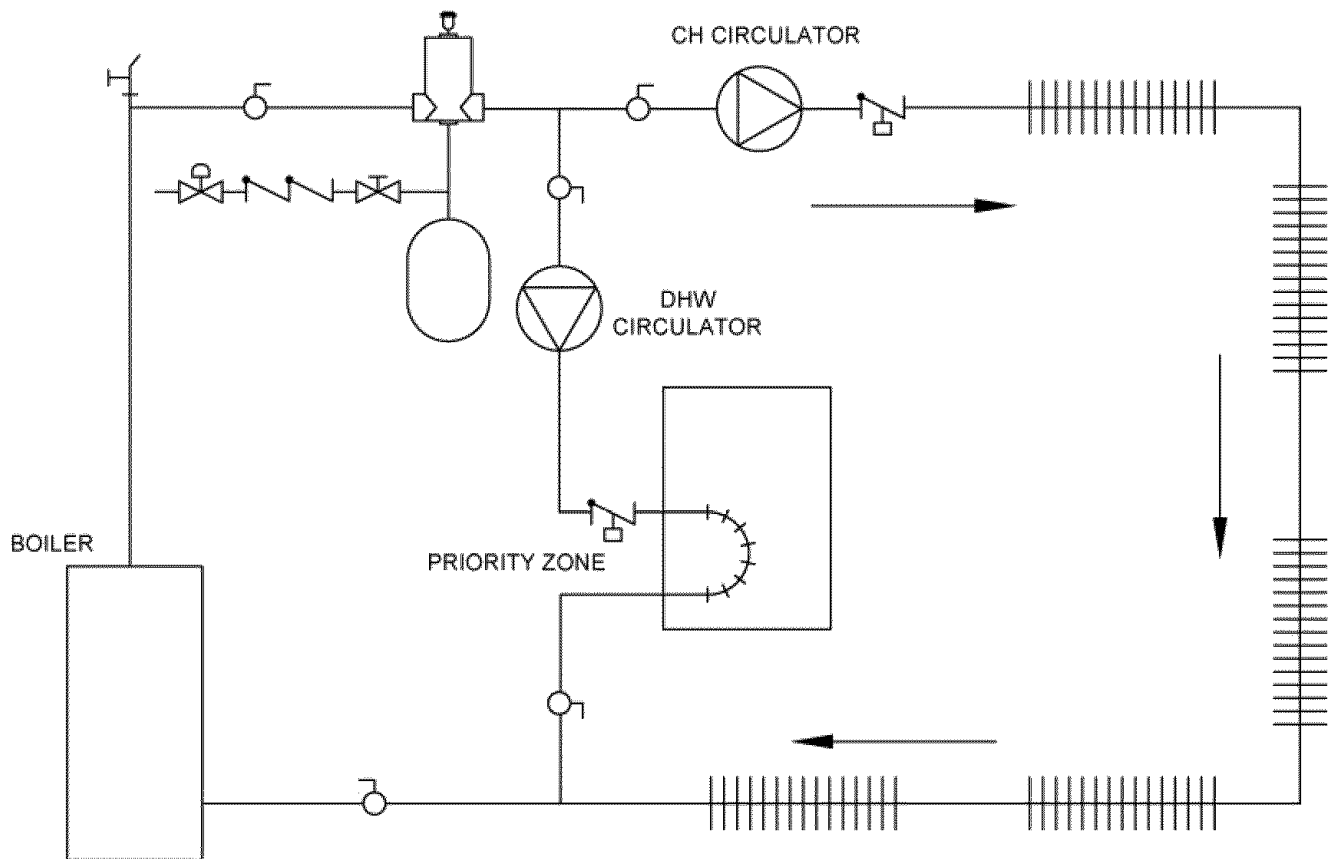
=====	LINE VOLTAGE BY FACTORY
-----	LIGNE DE VOLTAGE PAR L'USINE
-----	LOW VOLTAGE BY FACTORY
-----	BAS VOLTAGE PAR L'USINE
=====	LINE VOLTAGE BY INSTALLER
-----	LIGNE DE VOLTAGE PAR L'INSTALLATEUR
-----	LOW VOLTAGE BY INSTALLER
-----	BAS VOLTAGE PAR L'INSTALLATEUR

NOTE: 1. SWITCHES ARE SHOWN IN POSITION TAKEN DURING HEATING CYCLE.
(LES INTERRUPTEURS SONT MONTRES EN POSITION DE CYCLE DE CHAUFFANT.)

2. IF ANY OF THE ORIGINAL WIRING SUPPLIED WITH THE BOILER IS REPLACED, IT MUST BE REPLACED WITH LIKE WIRE SIZE AND TYPE OF INSULATION OR EQUIVALENT.
(SI AUCUN DES FILS ORIGINAUX FOURNIS AVEC LA CHAUDIERE EST REMPLACÉ, IL DOIT ÊTRE REMPLACÉ PAR UN AUTRE FIL DE MÊME GROSSEUR ET DU MÊME TYPE D'ISOLATION OU L'ÉQUIVALENT.)

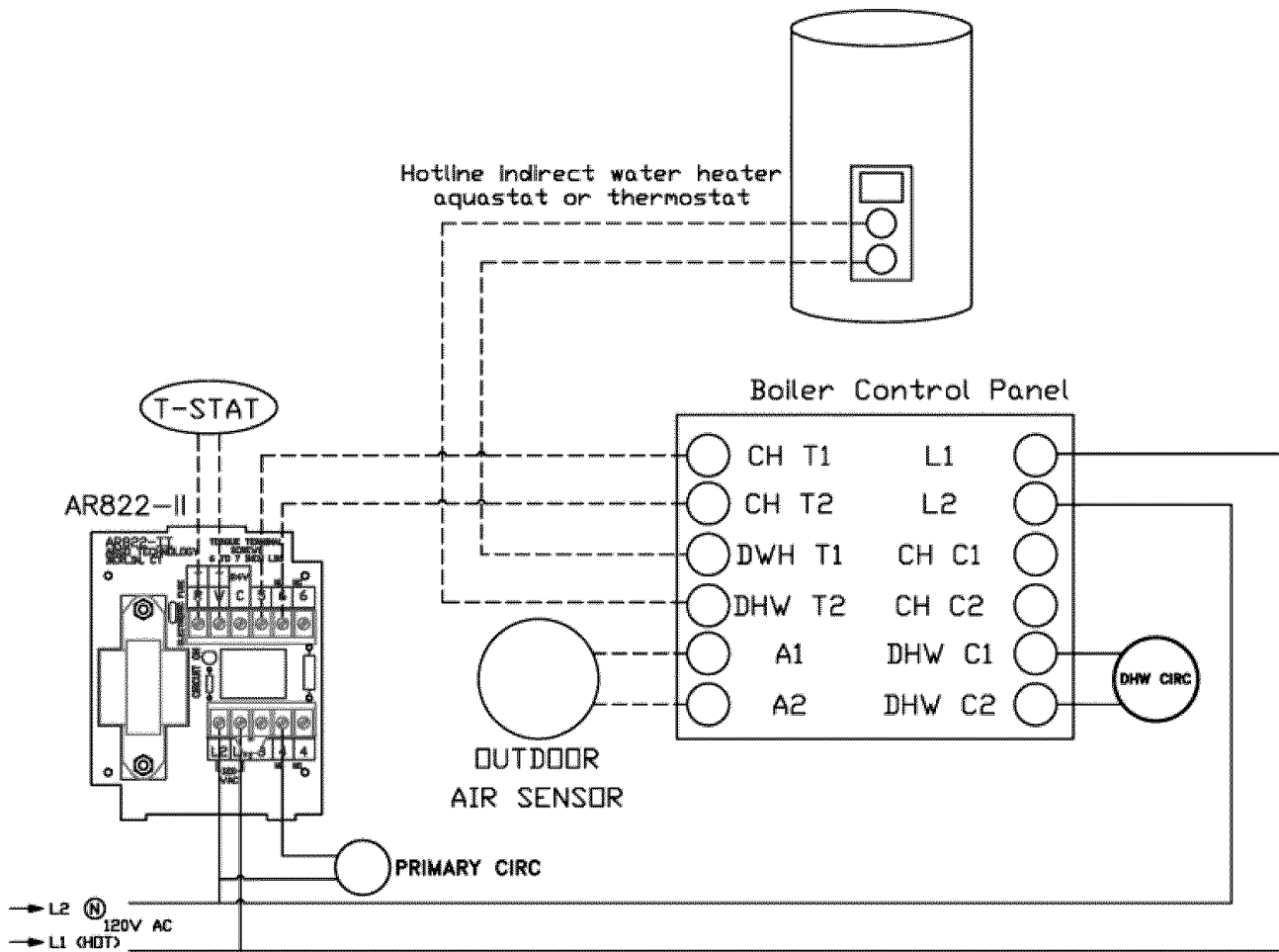
XIV - PIPING AND WIRING APPENDIX

SINGLE ZONE SYSTEM WITH DOMESTIC HOT WATER PRIORITY



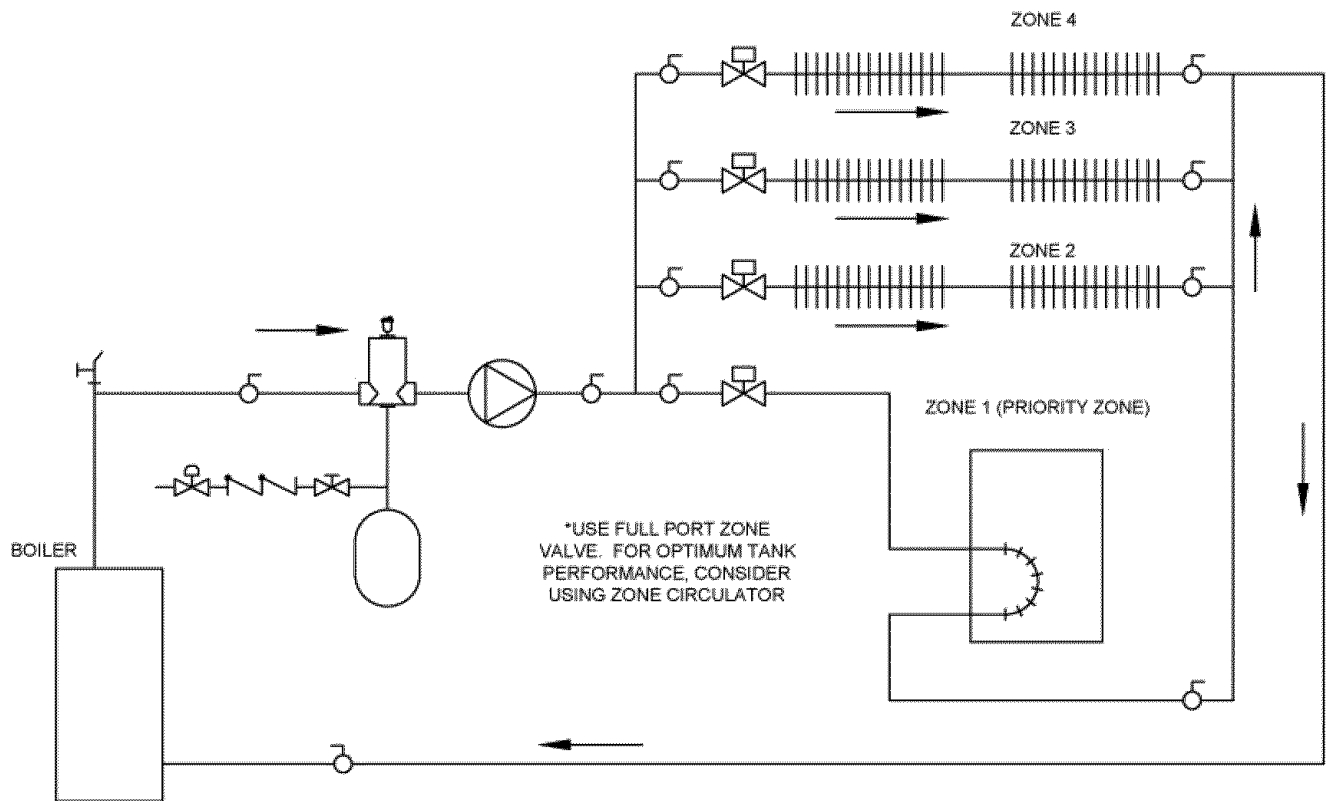
XIV - PIPING AND WIRING APPENDIX

SINGLE ZONE SYSTEM WITH DOMESTIC HOT WATER PRIORITY



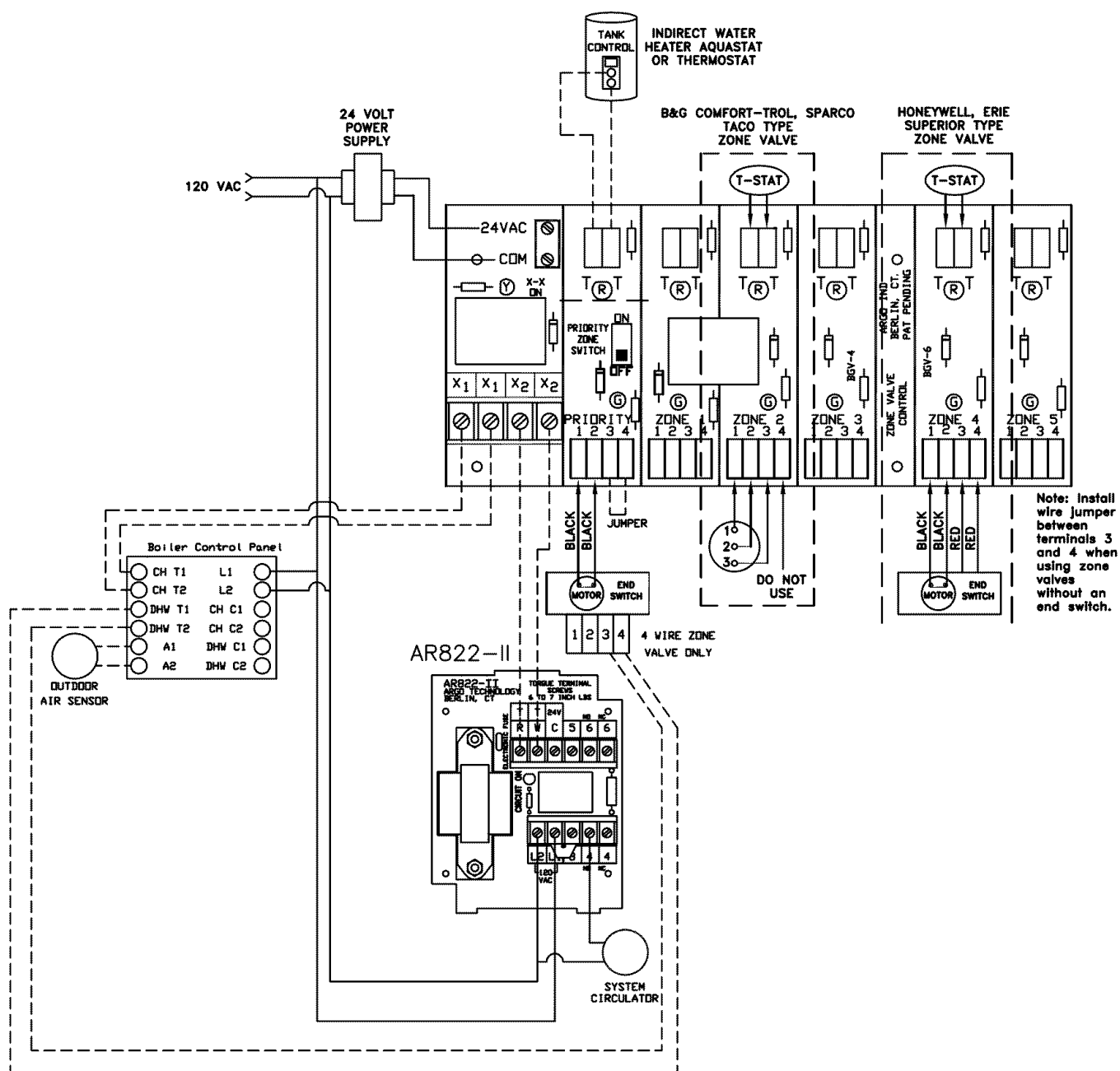
XIV - PIPING AND WIRING APPENDIX

MULTIZONE PIPING WITH ZONE VALVES AND DOMESTIC HOT WATER PRIORITY (WITH ZONE VALVE)



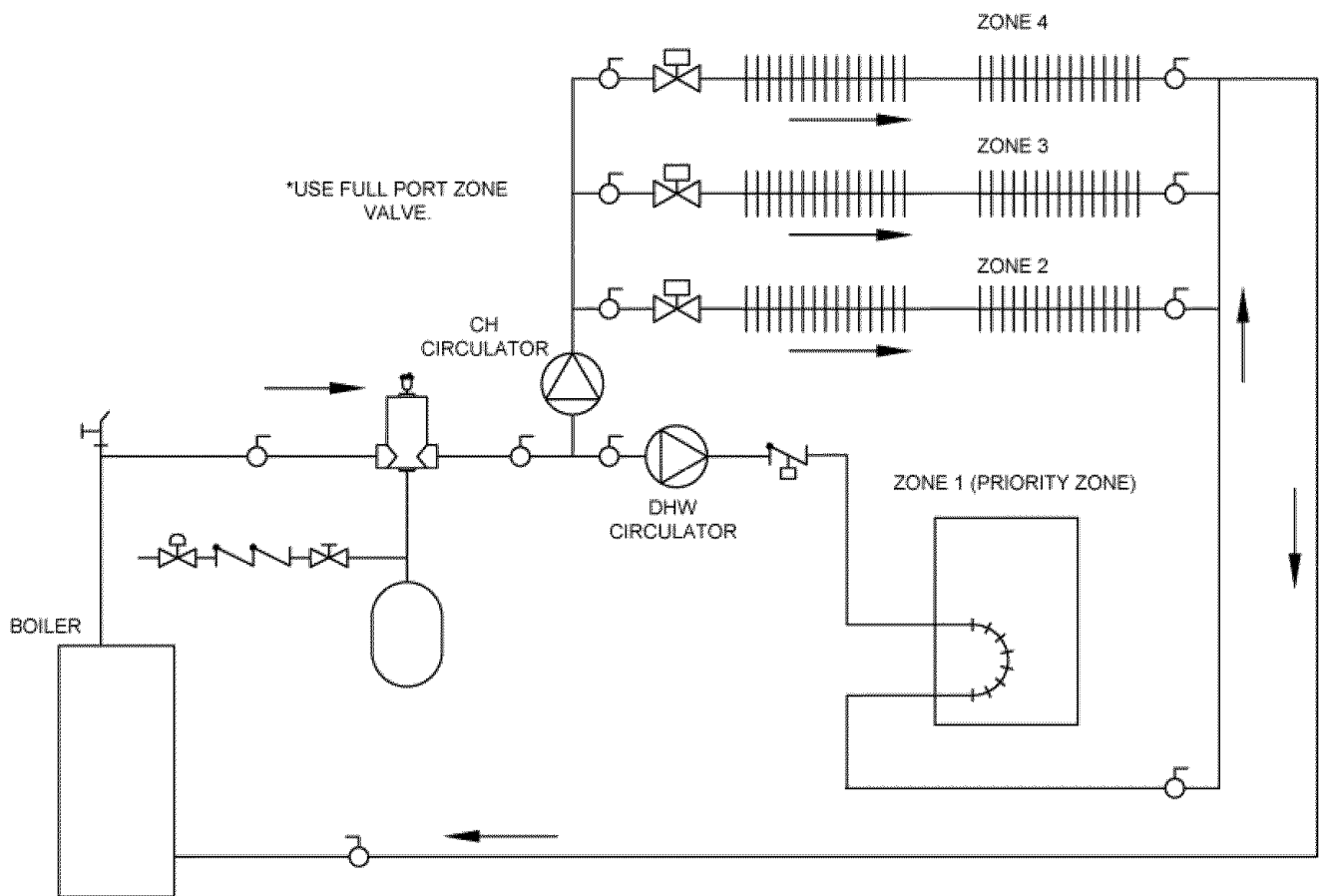
XIV - PIPING AND WIRING APPENDIX

**MULTIZONE PIPING WITH ZONE VALVES
AND DOMESTIC HOT WATER PRIORITY (WITH ZONE VALVE)**



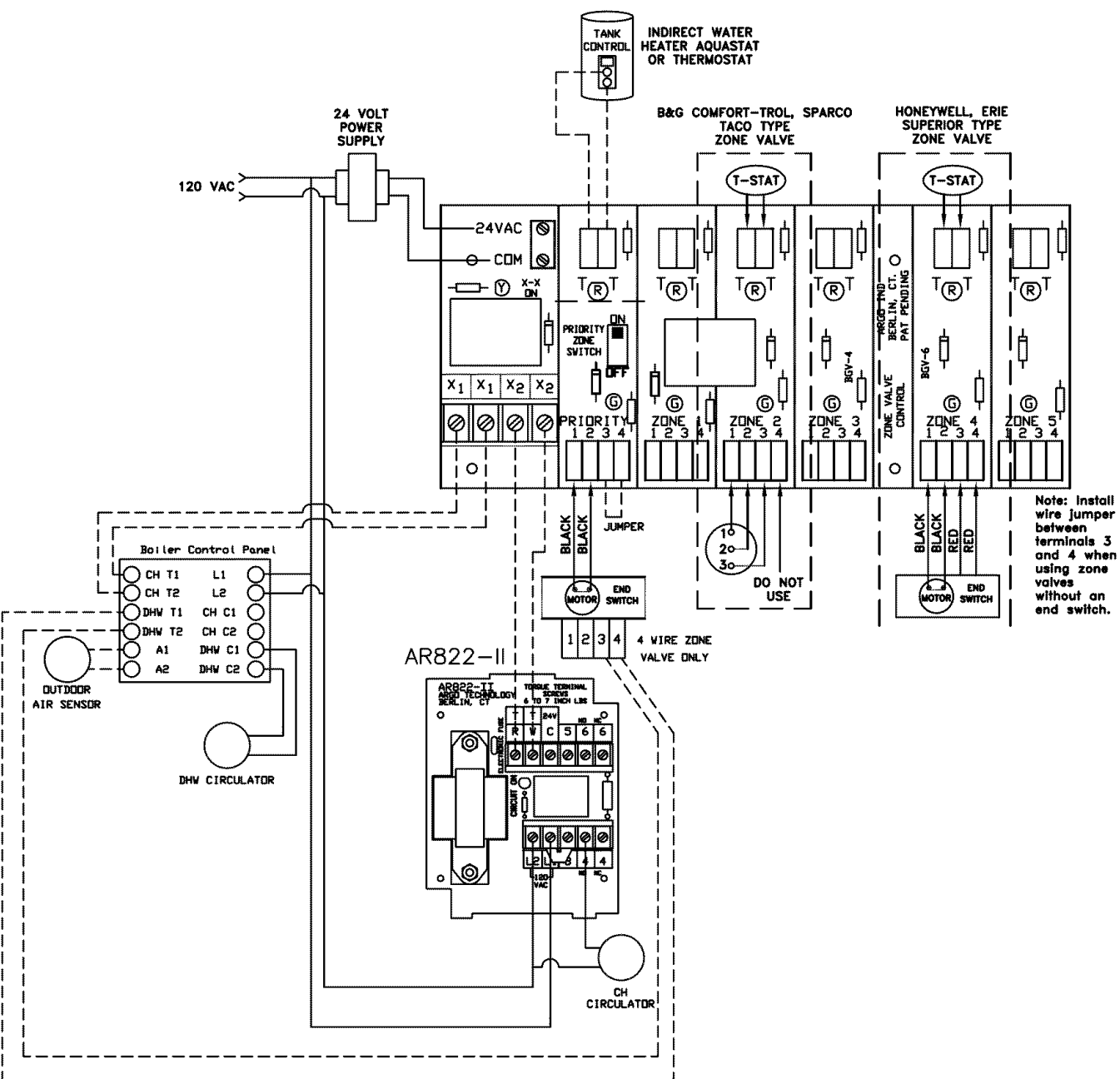
XIV - PIPING AND WIRING APPENDIX

MULTIZONE SYSTEM WITH ZONE VALVES AND DOMESTIC HOT WATER PRIORITY (WITH CIRCULATOR)



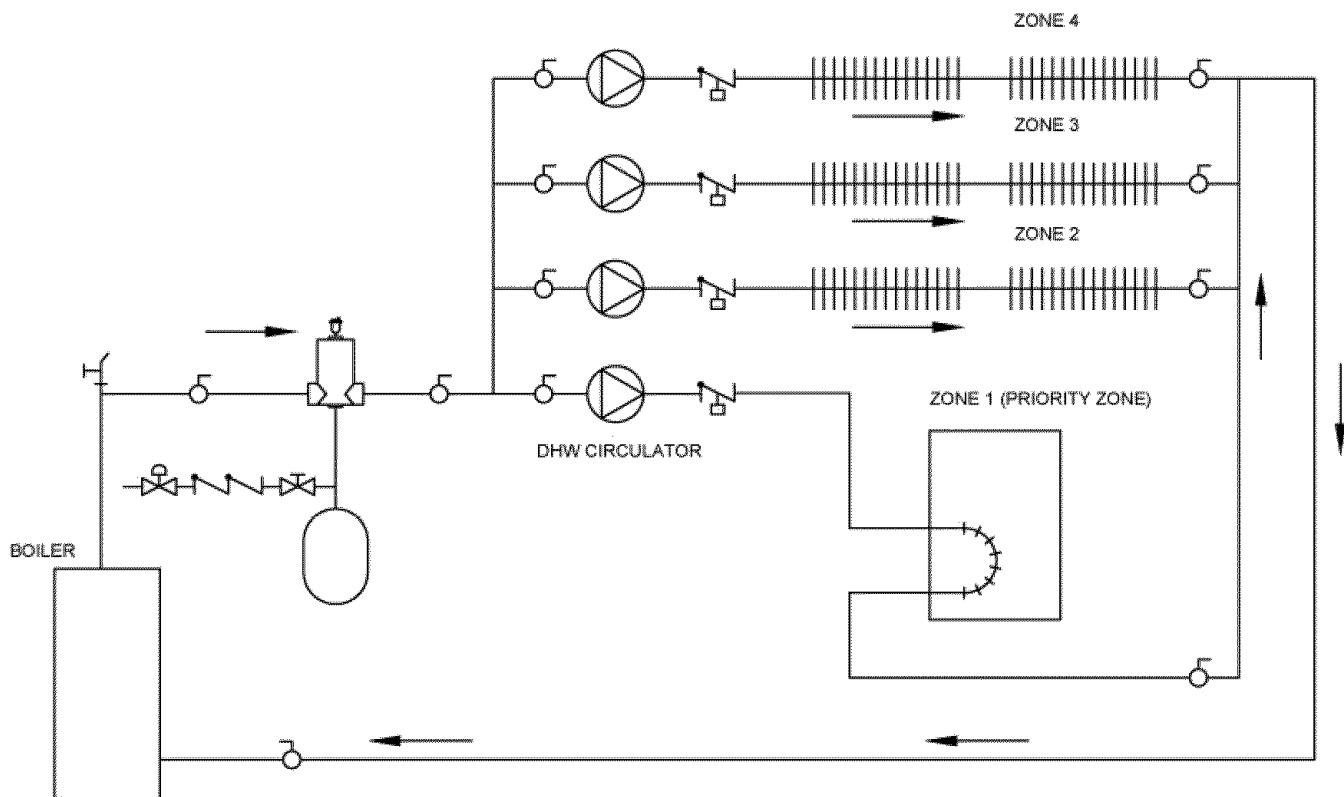
XIV - PIPING AND WIRING APPENDIX

MULTIZONE SYSTEM WITH ZONE VALVES AND DOMESTIC HOT WATER PRIORITY (WITH CIRCULATOR)



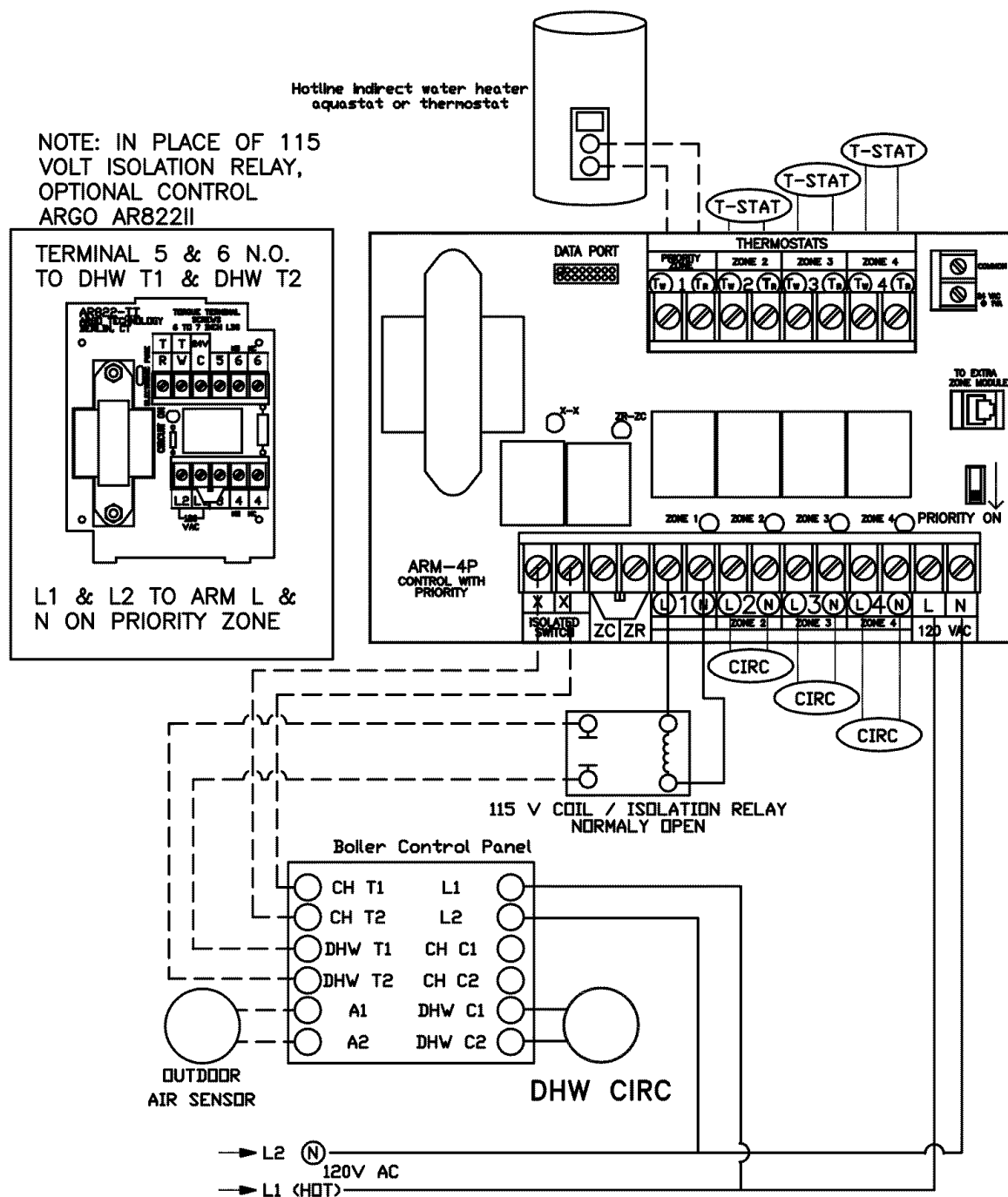
XIV - PIPING AND WIRING APPENDIX

MULTIZONE SYSTEM WITH CIRCULATORS AND DOMESTIC HOT WATER PRIORITY



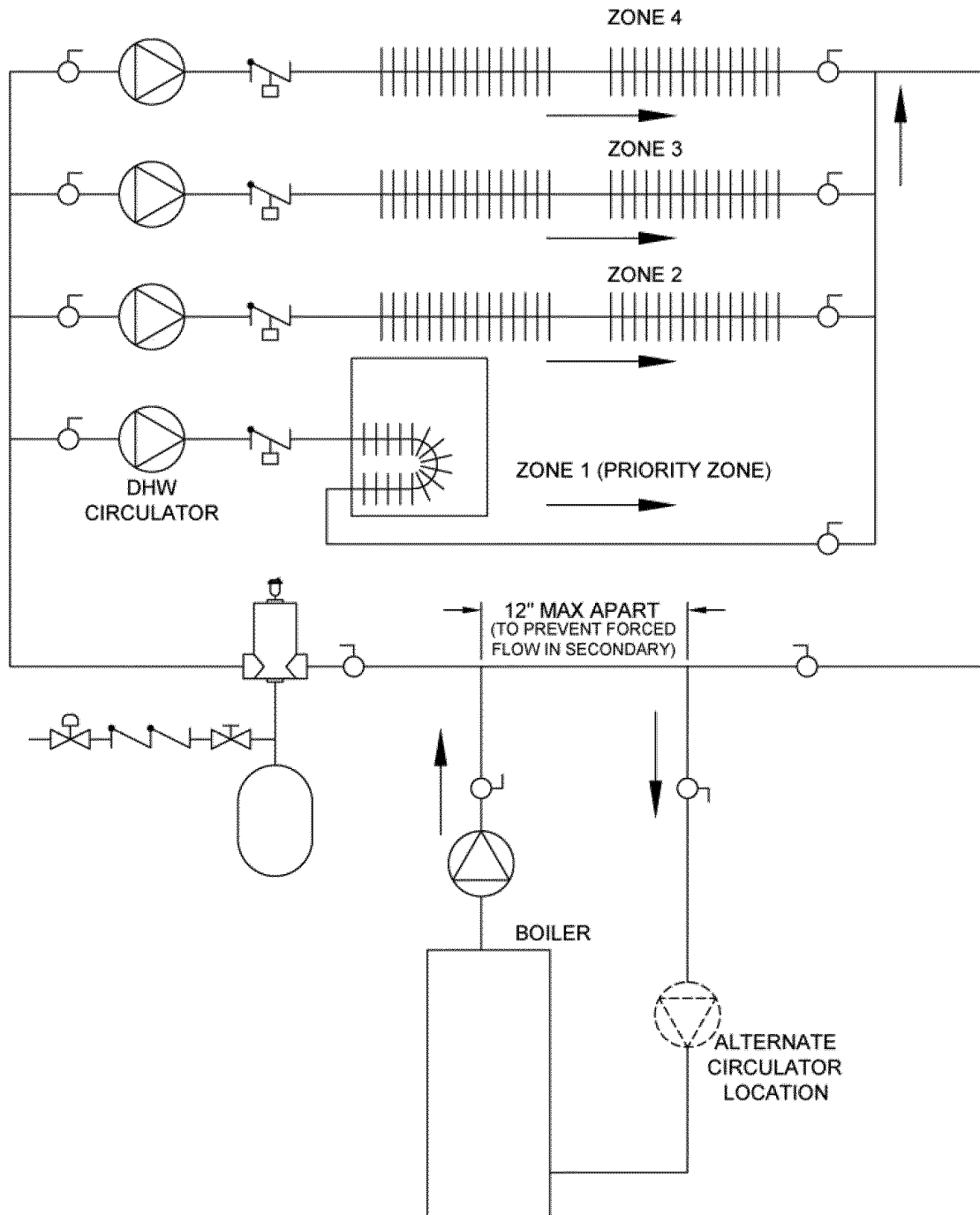
XIV - PIPING AND WIRING APPENDIX

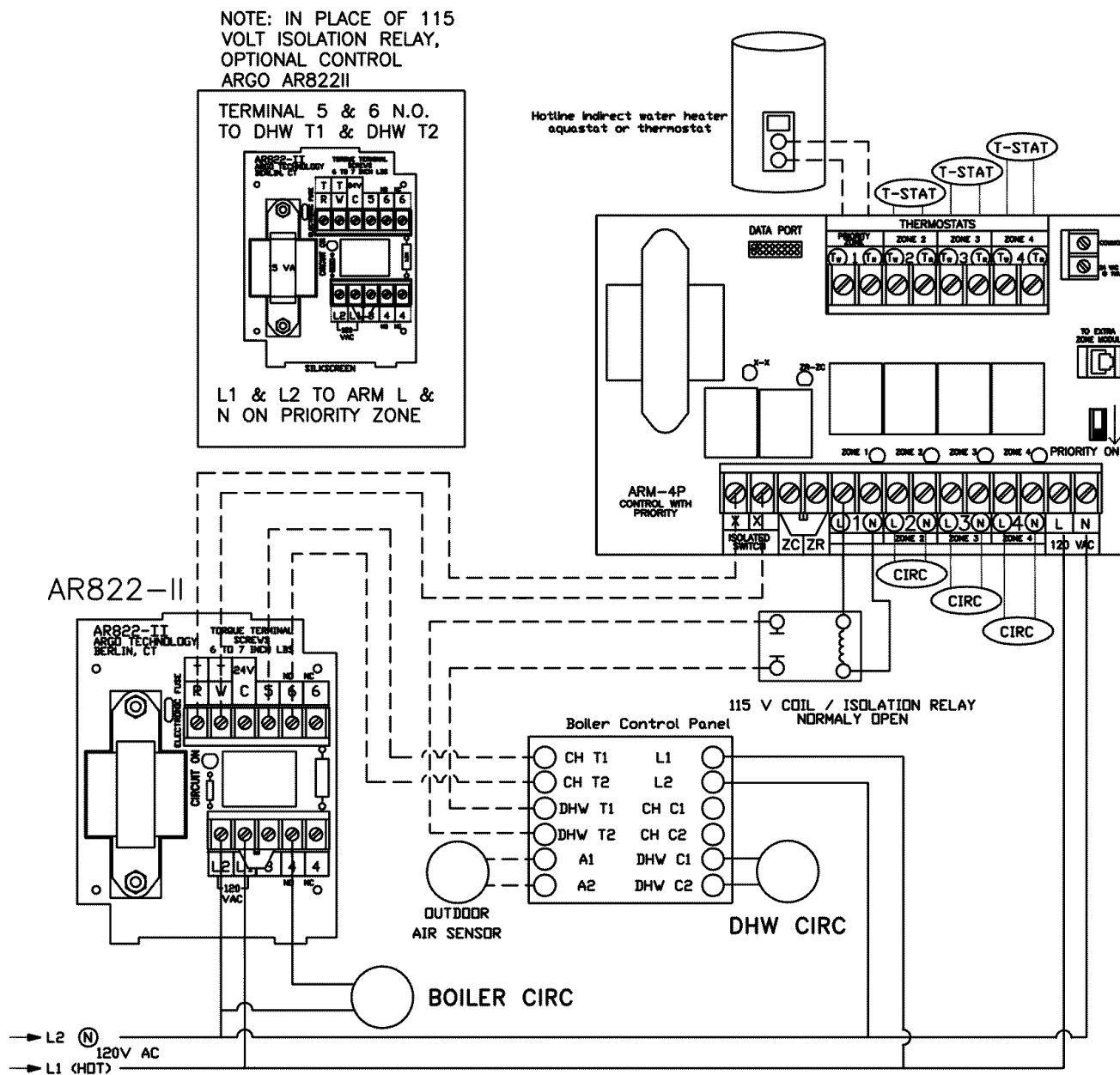
MULTIZONE SYSTEM WITH CIRCULATORS AND DOMESTIC HOT WATER PRIORITY



XIV - PIPING AND WIRING APPENDIX

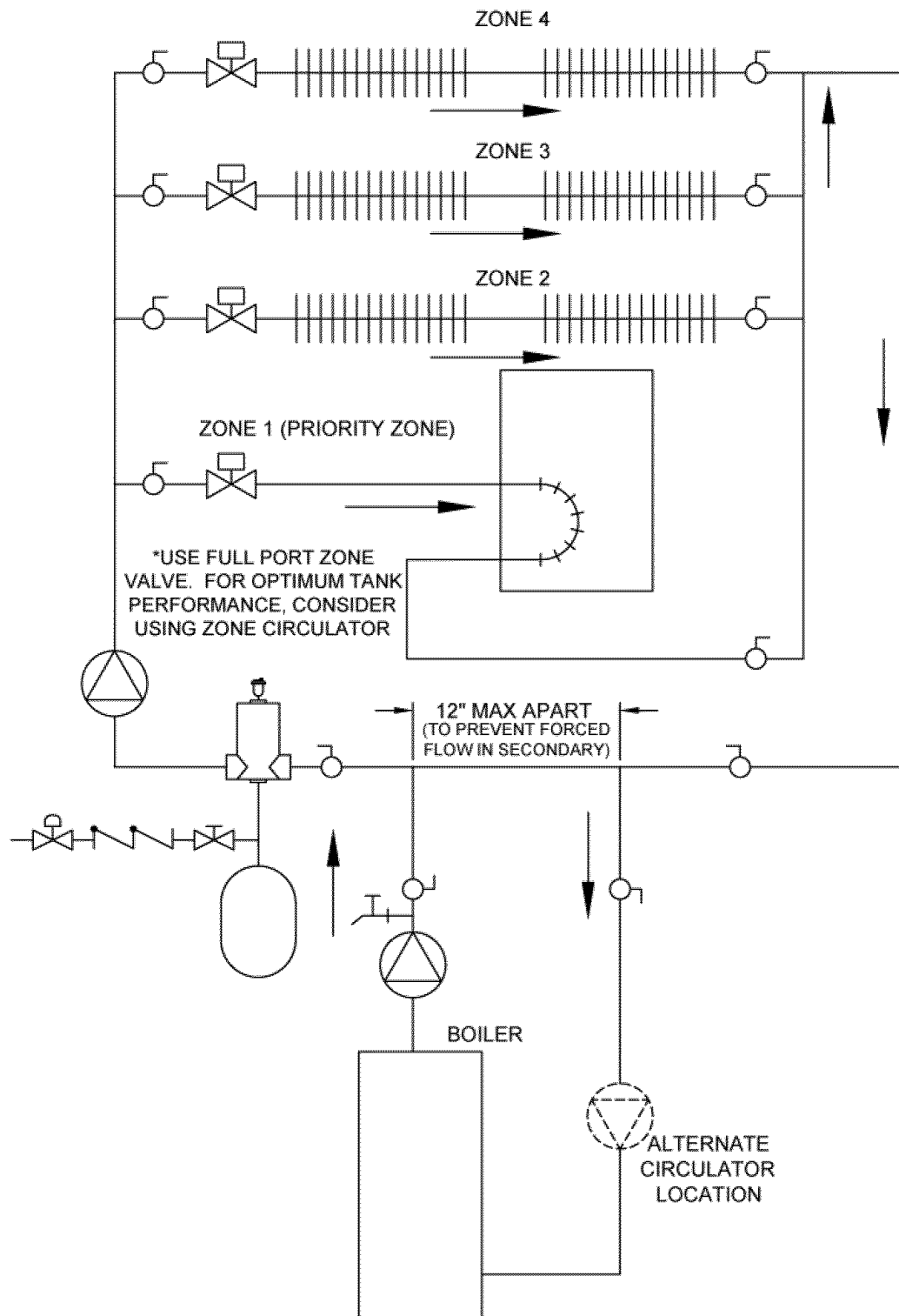
PRIMARY/SECONDARY PIPING WITH CIRCULATORS AND DOMESTIC HOT WATER





XIV - PIPING AND WIRING APPENDIX

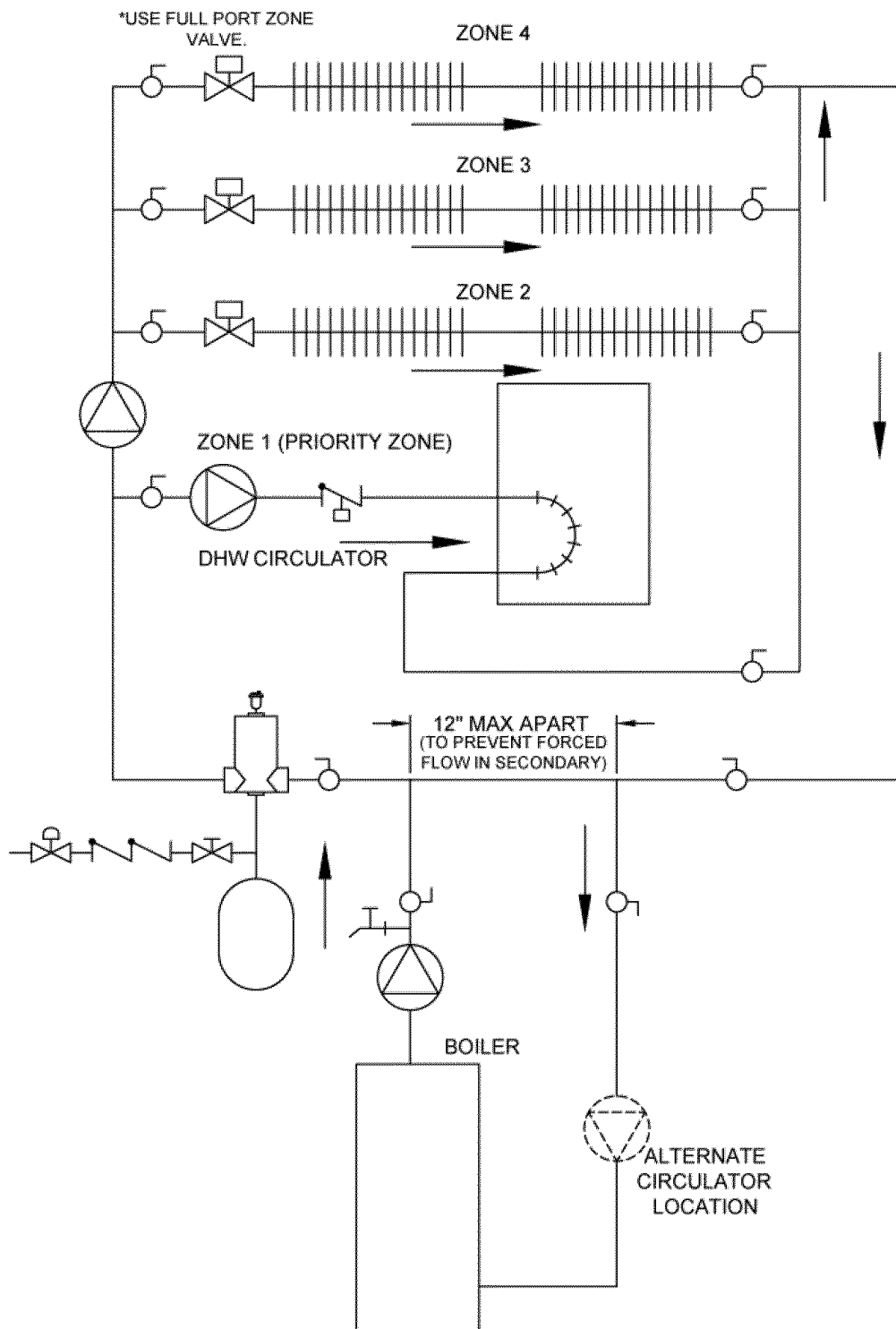
PRIMARY/SECONDARY MULTIZONE SYSTEM PIPING WITH ZONE VALVES AND DOMESTIC HOT WATER (WITH ZONE VALVE)

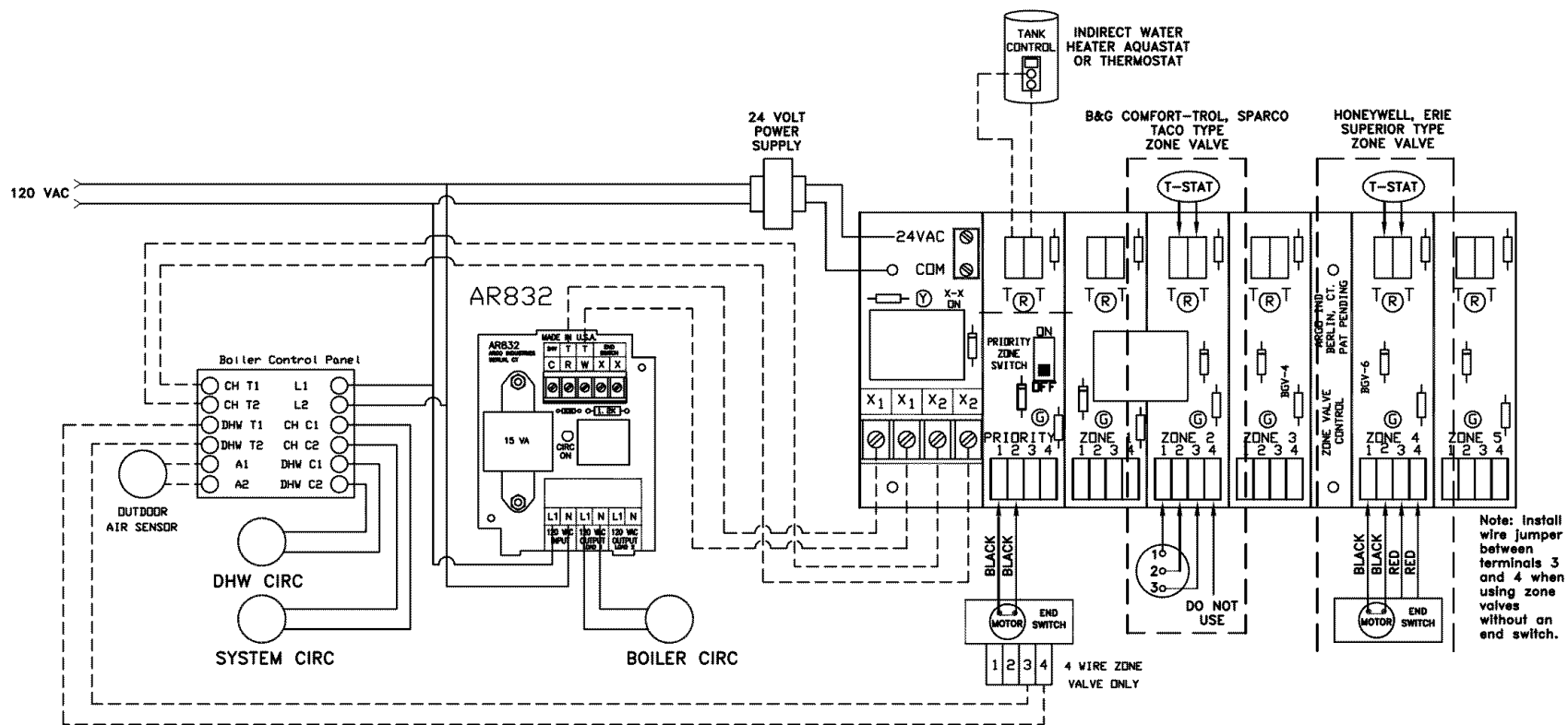


Note: a priority loop zone valve is used with this configuration

XIV - PIPING AND WIRING APPENDIX

PRIMARY/SECONDARY PIPING WITH ZONE VALVES AND DOMESTIC HOT WATER (WITH CIRCULATOR)



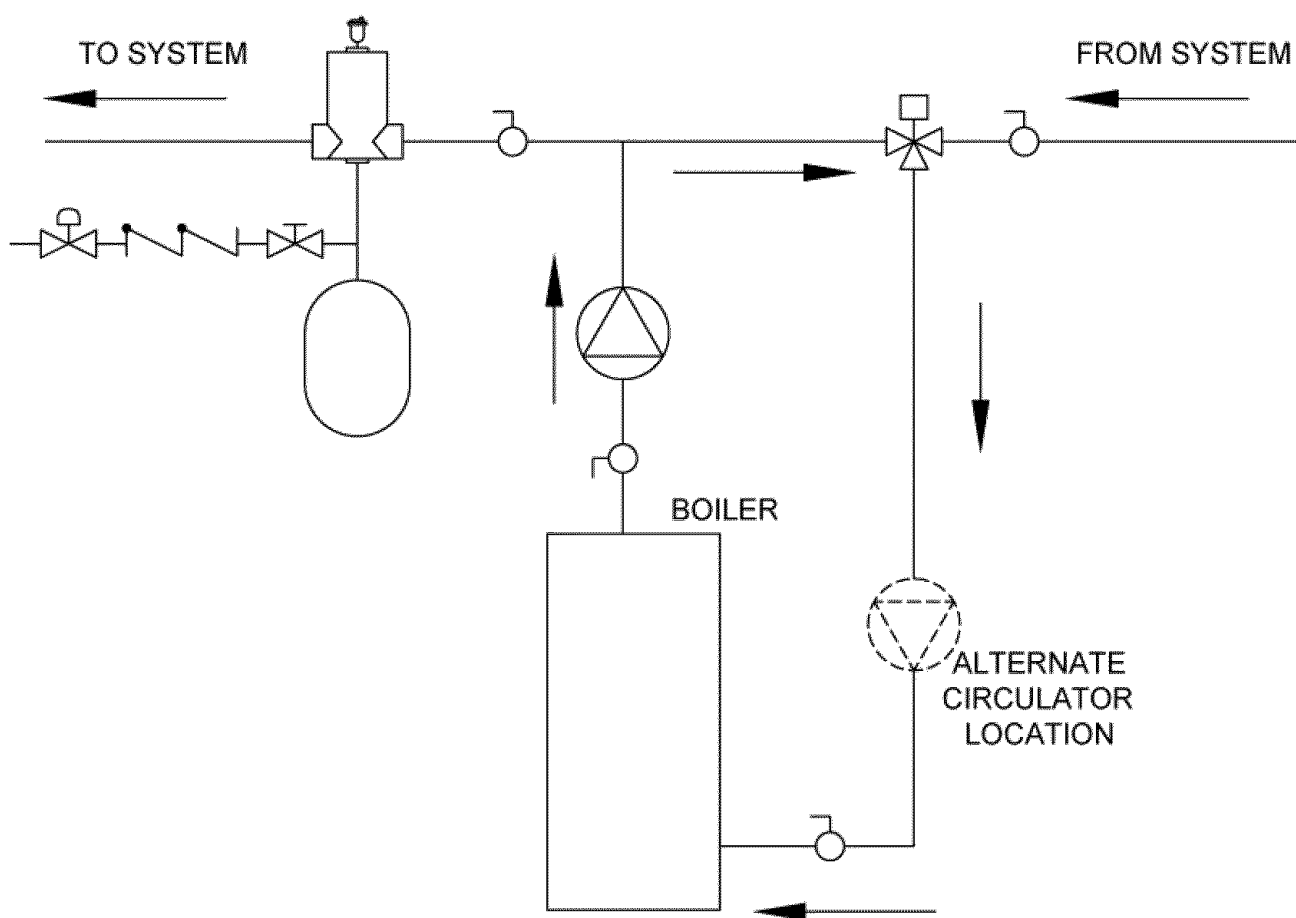


Note: a priority loop zone valve is used with this configuration

PRIMARY/SECONDARY WIRING WITH ZONE VALVES AND DOMESTIC HOT WATER (WITH CIRCULATOR)

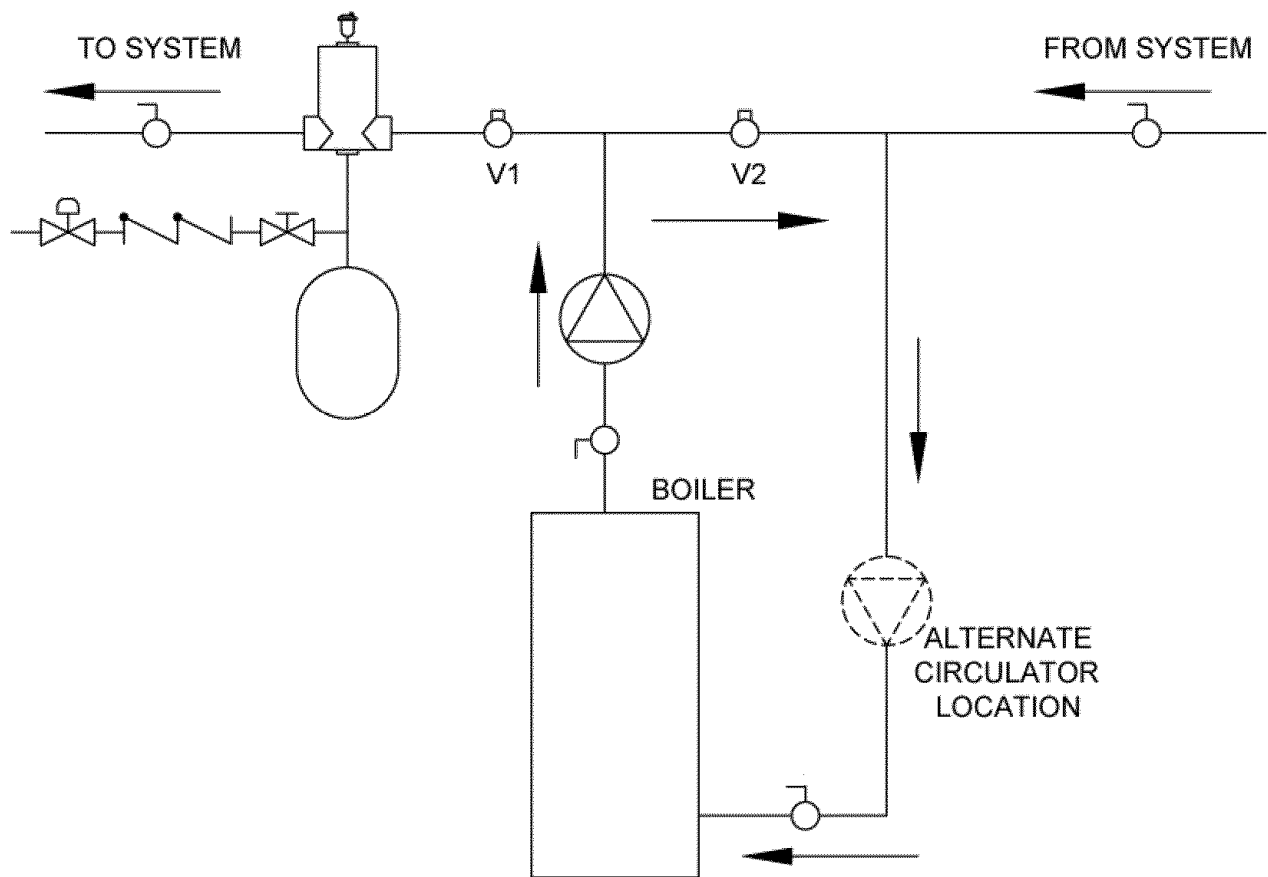
XIV - PIPING AND WIRING APPENDIX

BYPASS PIPING (AUTOMATIC MIXING VALVE)



XIV - PIPING AND WIRING APPENDIX

BYPASS PIPING (FIXED LOW TEMP. ONLY)



XIV - PIPING AND WIRING APPENDIX

BYPASS PIPING (4-WAY VALVE OPTION WITH CIRCULATOR ON SUPPLY)

