

FusionHDTV

1. Before Getting Started
2. Software Installation
3. Hardware Installation
4. Using FusionHDTV



FusionHDTV USER License

DViCO Corporation (“DViCO”) is granting you (an individual or an entity, either of which is referred to herein as “Licensee”) a license to use DViCO’s FusionHDTV computer software, hardware, associated media and printed materials only upon the condition that Licensee accepts all of the terms and conditions contained in this User License Agreement (the “Agreement”). If Licensee does not agree to the terms of this Agreement, Licensee should not install or use the Products rather, promptly return the Products to the place of purchase.

1. Grant of License. This Agreement grants Licensee a personal, limited, non-transferable, non-exclusive right to install and use one copy of the Products on a single computer. No other uses and/or distribution of the Products are permitted without DViCO’s prior written consent. DViCO reserves all rights not expressly granted to Licensee.

2. Limitations or Restrictions. Licensee may not: (i) modify or translate the Products; (ii) reverse engineer or disassemble the Products, except and only to the extent this restriction is expressly permitted by applicable law; (iii) separate the Products component parts to transfer to a third party.

3. Intellectual Property Rights. Licensee acknowledges that no title to the intellectual property in the Products and any components thereof is transferred to Licensee. All rights, titles and copyrights in and to the products are owned by DViCO. The Products are protected by copyright laws and international copyright conventions and treaties.

4. Disclaimer of Warranty. The Products are deemed accepted by Licensee. The PRODUCTS are provided to Licensee “AS IS” and without warranty of any kind. To the maximum extent permitted by applicable law, DViCO further disclaims all warranties including without limitation any implied warranties of merchantability, fitness for a particular purpose, and non-infringement. Any and all risk arising out of the use or performance of the PRODUCTS remains with Licensee. In no event shall DViCO or its suppliers be liable for any consequential, incidental, direct, indirect, special, punitive, or other damages whatsoever (including, without limitation, damages for loss of business profits, business interruption, loss of business information, or other pecuniary loss) arising out of this Agreement or the use of or inability to use the Products, even if DViCO has been advised of the possibility of such damages. Because some

states/jurisdictions do not allow the exclusion or limitation of liability for consequential or incidental damages, the above limitation applies only to the extent permitted by applicable law.

5. Limitation of Liability. DVICO's total liability and Licensee's exclusive remedy under this Agreement shall not exceed the replacement cost of a single copy of the Products.

6. Indemnification. Licensee shall hold harmless, indemnify and defend DVICO, its officers, directors and employees, from and against any claim, suit or proceeding and any losses, damages, fines and expenses (including attorneys' fees and costs) arising out of or relating to any claims that Licensee's use of the Products in conjunction with any Licensee Application infringes the patent, copyright, trademark, trade secret, or other proprietary rights of any third party, or resulting from any breach of this Agreement by Licensee.

7. Termination. Without prejudice to any other rights, DVICO may terminate this Agreement if Licensee fails to comply with any term or condition of this Agreement. Upon termination of this Agreement, Licensee shall immediately discontinue the use of the Products and certify destruction of all full or partial copies of the Products and related materials provided by DVICO. Licensee may also terminate this Agreement at any time by destroying the Products and all copies thereof.

8. General. Licensee acknowledges that he or she has read this Agreement, understands it, and that by using the Products Licensee agrees to be bound by the terms and conditions set forth in this Agreement. Licensee further agrees that the Agreement is the complete and exclusive statement of the understanding between DVICO and Licensee which supersedes any proposal or prior agreement, oral or written, and any other communication between DVICO and Licensee relating to the subject matter of this Agreement. This Agreement may not be modified except in a writing duly signed by an authorized representative of DVICO and Licensee. If any provision of this Agreement is held to be unenforceable for any reason, such provision shall be reformed only to the extent necessary to make it enforceable, and such decision shall not affect the enforceability of such provision under other circumstances, or of the remaining provisions hereof under all circumstances.

FCC Information

This device complies with Part 15 of the FCC Rules. Operation is subject to the following two conditions:

- (1) This Device may not cause harmful interface, and
- (2) This device must accept any interference received, including interference that may cause undesired operation.

Note: This equipment has been tested and found to comply with the limits for CLASS B digital device, pursuant to Part 15 of FCC Rules. These limits are designed to provide reasonable protection against harmful interference when the equipment is operated in a commercial environment. This equipment generates, uses and can radiate radio frequency energy and, if not installed and used in accordance with the instructions, may cause harmful interference to radio communications. However, there is no guarantee that interference will not occur in a particular installation. If this equipment does cause harmful interference to radio or television reception, which can be determined by turning the equipment off and on, the user is encouraged to try correct the interference by one or more of the following measures:

- 1.1. Reorient or relocate the receiving antenna.
- 1.2. Increase the separation between the equipment and receiver.
- 1.3. Connect the equipment into an outlet on a circuit different from that to which receiver is connected.
- 1.4. Consult the dealer or experienced radio/TV technician for help.

WARNING

Changes or modifications not expressly approved by the manufacturer could void the user's authority operate the equipment.

1	Before Getting Started	6
1.1	FusionHDTV Specification.....	6
1.2	FusionHDTV System Requirements.....	8
1.3	Package contents.....	9
2	Software Installation.....	10
2.1	Installing FusionHDTV Applications.....	10
2.2	Driver installation under Windows ME.....	21
2.3	Driver installation under Windows 2000 Professional.....	23
2.4	Driver installation under Windows XP	28
3	Hardware Installation	31
3.1	About the Board	31
3.2	Before Installation	32
3.3	Board Installation	33
3.4	Remote Installation	34
4	Using FusionHDTV	36
4.1	Starting and Quitting.....	36
4.2	Display setup	36
4.3	Configuration.....	40
4.4	Record	49
4.5	Playing Files.....	51
4.6	SnapShot Capturing.....	52
4.7	Using EPG	53
4.8	Cut Editing	58
4.9	Using FusionRemote.....	60
4.10	Using Signal Checker.....	67
4.11	Using FusionConverter	68
4.12	FusionHDTV ShortKey.....	70

1 Before Getting Started

1.1 FusionHDTV Specification

- **A Highly cost effective ATSC/ NTSC TV reception card**

You can enjoy HDTV at quite a low price due to Dvico's innovative HDTV software decoding engine.

- **Unrivaled crystal-clear picture quality**

FusionHDTV provides up to 5 times higher resolution when compared to analog TV, and provides crisp and crystal-clear picture quality to a PC screen.

- **Good picture quality on LCD or low-resolution monitor**

FusionHDTV shows excellent and super-clear on HDTV screens and even on LCD TV's and low resolution CRT due to Dvico's proprietary decoding engine.

- **Great system compatibility**

FusionHDTV is compatible with most video cards and motherboards. FusionHDTV works on any recent VGA cards including Nvidia MX series or later chipsets, as well as ATI Radeon chipsets. It works quite well on Intel, VIA, SIS, and other motherboard chipsets. Minimum system requirements are Pentium 4 1.6G and DDR266 memory (or RDRAM memory), or AMD's Athlon™ XP 1600+ or faster processor, if you don't have the ATI Radeon VGA card. Pentium 3 800Mhz or faster will be enough if you have an ATI Radeon card.

- **Recording and playback of the HDTV stream**

You can record live HDTV broadcasting streams to a PC and play them back anytime you want.

- **Using most recent VSB tuner – Best DTV reception rate**

FusionHDTV uses the most recent VSB tuner to get the best reception rate, so you can get the un-interrupted and stable HDTV screen.

- **69 terrestrial digital(8VSB)/analog channels**

FusionHDTV supports 69 terrestrial digital (8VSB) and all analog channels, so you will have the ability to receive all the channels available to you at your location.

- **All 18 ATSC formats compliant**

FusionHDTV supports all of the 18 formats of ATSC broadcasting, so you can experience the all of the full ATSC format-rich content available.

- **AC3 audio output**

FusionHDTV provides AC3 audio decoding, which is the standard audio format for ATSC. It can also bypass the AC3 audio to digital output and connect directly to an AV amplifier.

- **High resolution still capture**

FusionHDTV provides high resolution still screen capturing capability in live playback as well as file playback mode.

- **Cut Edit feature – Cut the transport stream files**

You can cut out the wanted scenes from the captured file and reconstruct the video clip.

- **Supports virtual channel**

Virtual channel is set on the channel list independent of physical channel.

- OSD for virtual channel and broadcasting station name is shown whenever channel is changed.

- **Supports sub-channel**

Sub channel is listed up in sub channel play list and can be selected with channel up/down button or mouse selection in sub channel play list.

- **second language**

Supports the second language in digital broadcasting

- **Supports screen saver off.**

Screen saver is off while FusionHDTV runs.

- **Supports AAC audio decoding**

TS file clips and DVHS with AAC audio can be played directly in FusionHDTV

- **Add To Favorite List**

You can add your favorite programs into favorite list before watching them.

- **Direct NATIVE .MPG recording**

You can record DTV stream to .MPG format directly.

- **HD-to-DVD or DivX format conversion**

HD clips can be converted to MPEG2, DVD files or DivX format using FusionConverter tool.

- **Supports DVHS record and control (Windows XP or above only)**

Direct DVHS capture/ recording/ playback with OHCI card

- **Supports Titan EPG**

Supports recording and live viewing according to TitanTV EPG.
Embeds the TitanTV EPG on the FusionHDTV application.

- **Supports Digital Cable**

Supports 64/256QAM sub-channel selection & playback in ATSC

1.2 FusionHDTV System Requirements

System requirements for FusionHDTV are as follows

<Input/Output>

- One TV antenna
- One inside stereo connection jack to sound card for analog TV
- S-Video IN, Composite IN

<DxVA VGAs>

- Pentium3 800MHz or faster with 128M memory
- Celeron 900Mhz or faster with 128M memory
- GeForce4 MX420,440,Fx5200,5600 Series, Ti Series
- All ATI Radeon series VGAs
- WinME/2000/XP or later
- Ultra-DMA66 enabled main board and HDD for recording

<nonDxVA VGAs>

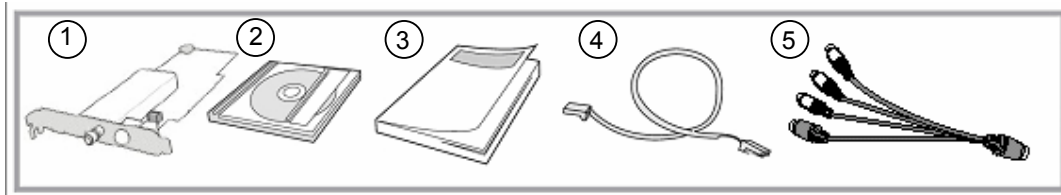
- Pentium4 1.6GHz or faster with 128M memory
- All Nvidia MX series VGAs and ATI Radeon series VGAs
- DDR266 or faster memory
- WinME/ 2000/ XP or later
- Ultra-DMA66 enabled main board and HDD for recording

<DVHS>

- Windows XP or above only.
- OHCI compatible 1394 card

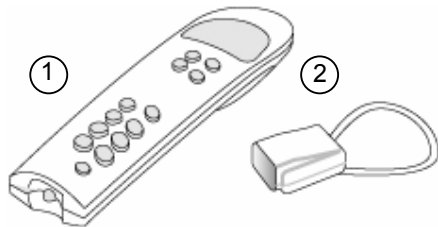
1.3 Package contents

The FusionHDTV package contains the following items:



- FusionHDTV card
- Setup CD
- Manual
- Internal cable to sound card for Analog TV Audio
- External Connection cable

* Optional FusionHDTV remote transceiver



- FusionHDTV transceiver
- Receiver

<Important Notice>

First install the software before you plug the FusionHDTV card in your system. It will ease the installation process. If you plugged the card in already, you can still proceed anyway.

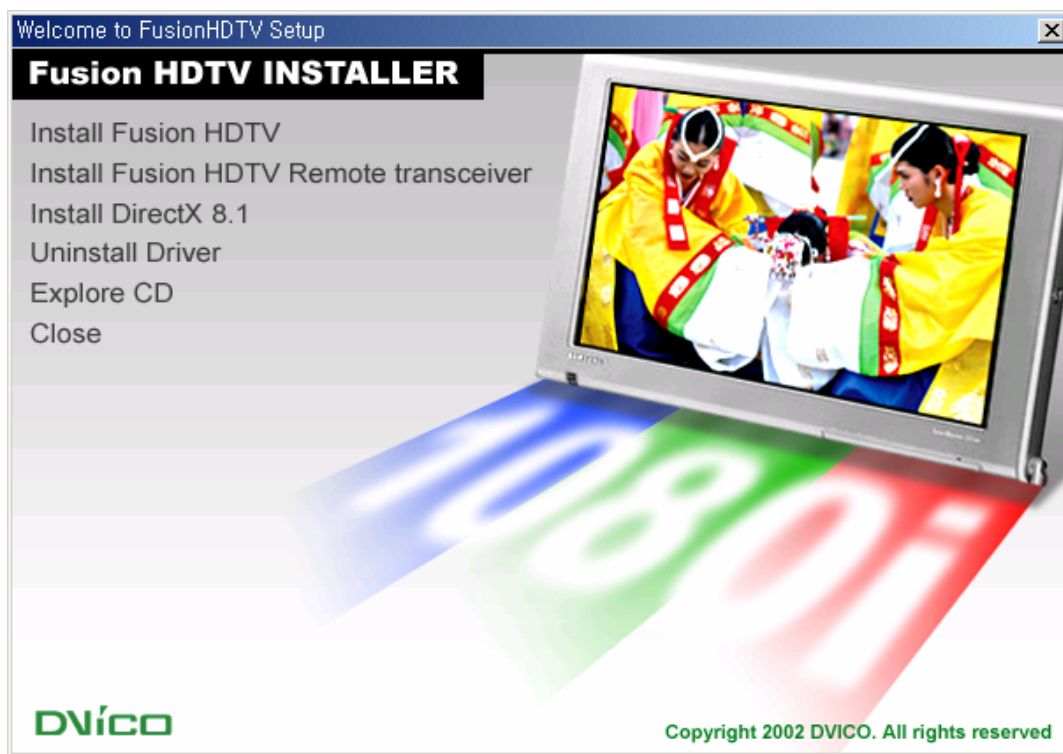
2 Software Installation

Most likely there will be an updated version of the files on our web site.

Please check the site ([Http://www.DVICO.com](http://www.DVICO.com)), before you install the software included in the CD.

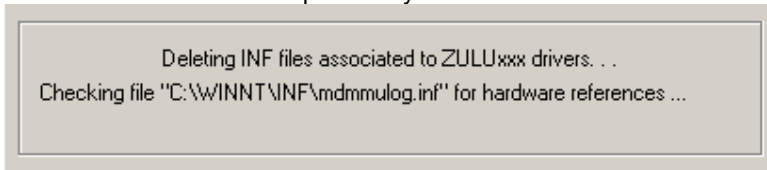
2.1 Installing FusionHDTV Applications

Insert FusionHDTV Installation CD into the CD-ROM drive. The setup window will automatically pop up. if you downloaded the recent version on DVICO's website, please run install.exe or setup.exe.

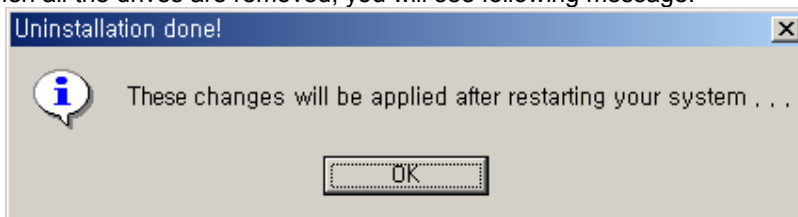


2.1.1 Uninstall Drivers

- 1) When you select Uninstall Driver in the menu on the FusionHDTV INSTALLER program, it will remove all the old drivers previously installed.



- 2) When all the drives are removed, you will see following message.

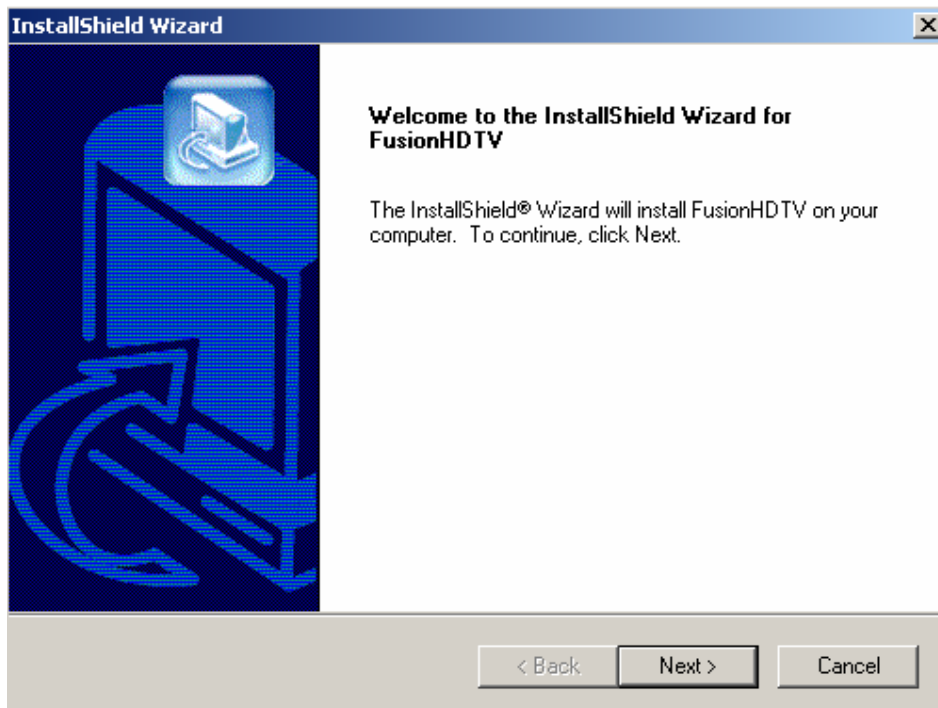


2.1.2 Installing FusionHDTV Software

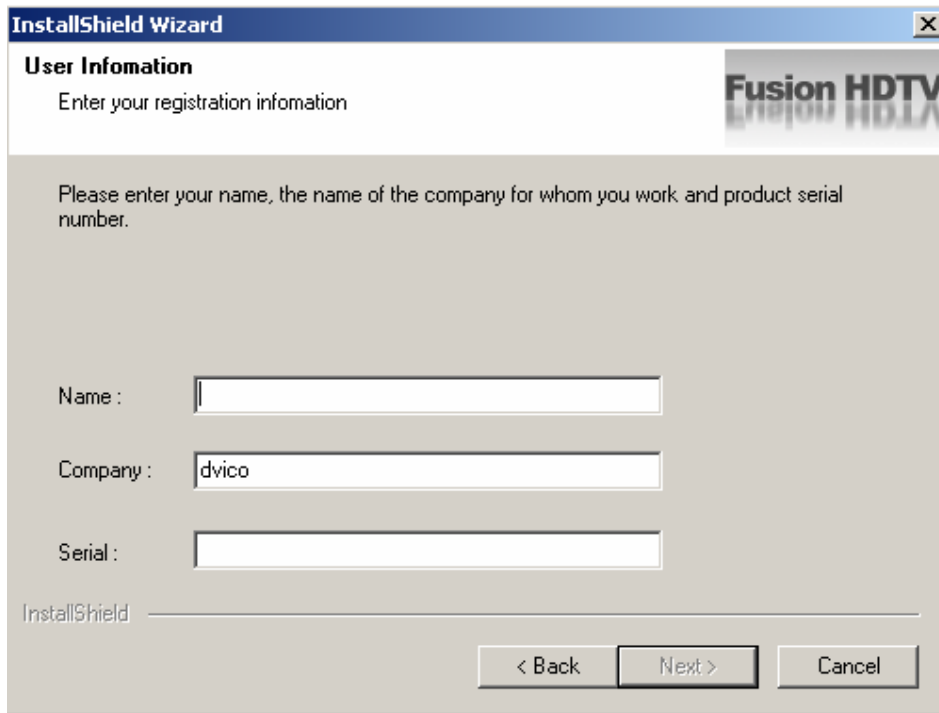
Important: Installation on Windows 2000 Professional or Windows XP

Before you install FusionHDTV software, be sure that you logged on as an account with Administrator privileges.

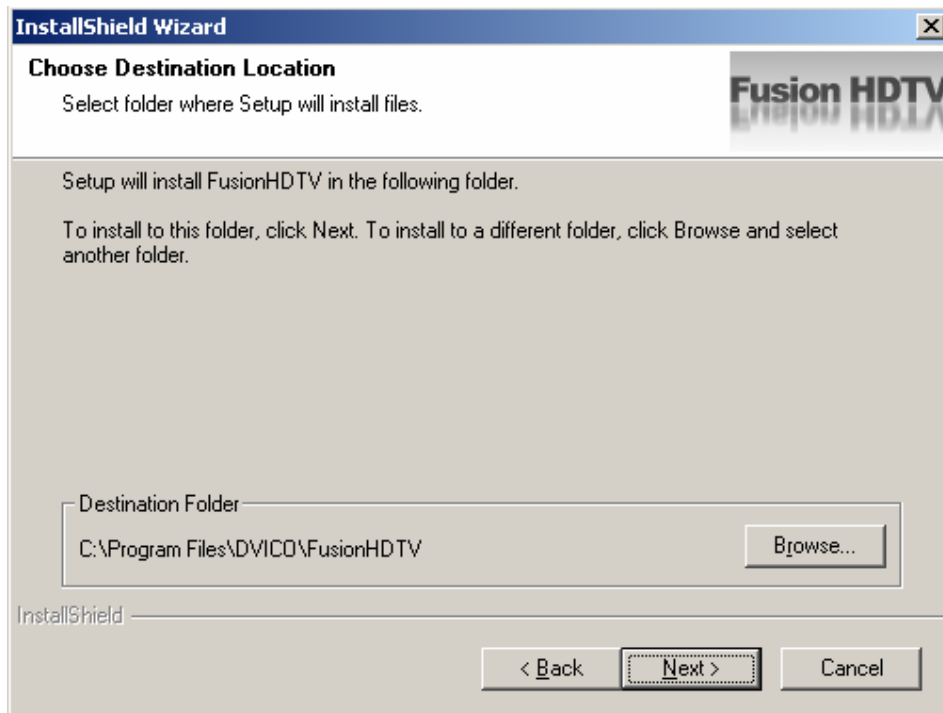
- 1) Select "Install FusionHDTV".
- 2) At the FusionHDTV Installation dialog opens, click on the "Next>" button.



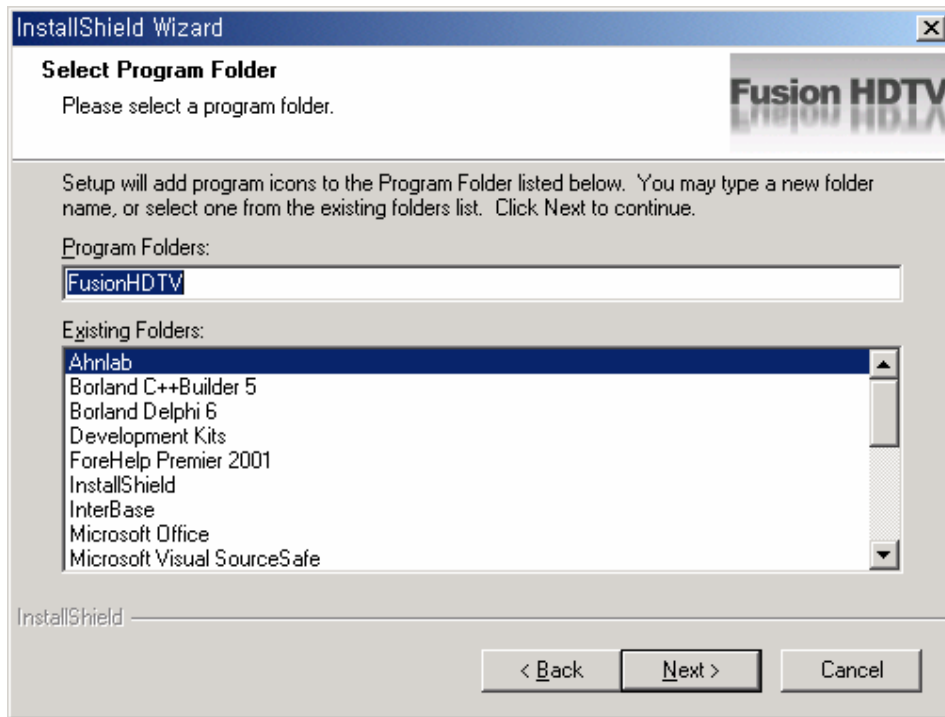
- 3) The user Information window will show up when you are upgrading of the WEB version. Type in the serial number, which is on the jacket of FusionHDTV installation CD, then click on the "Next" button.



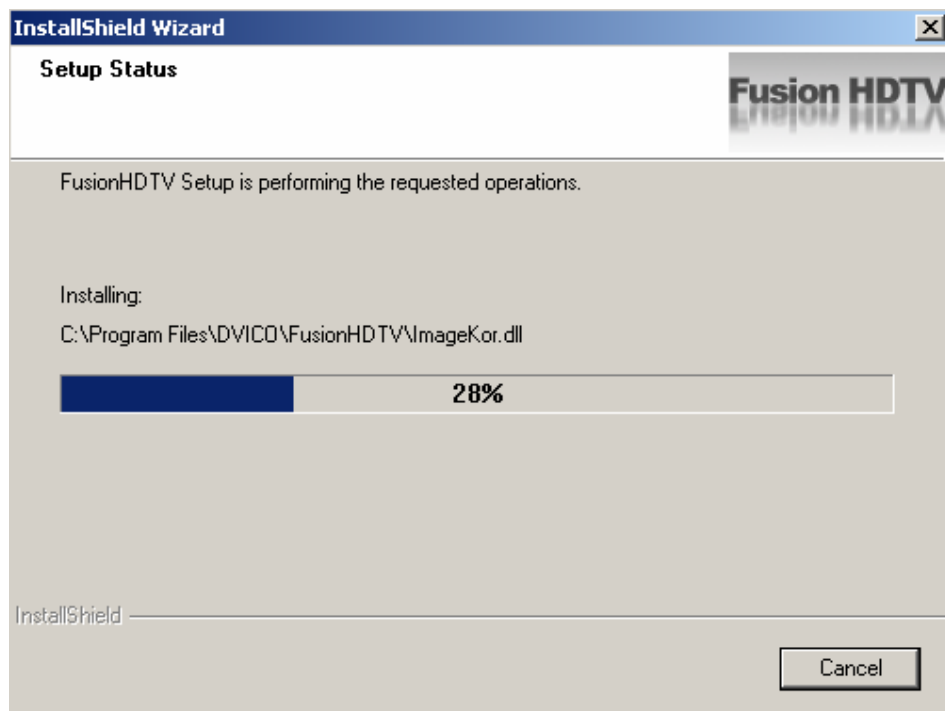
- 4) The "Choose Destination Location" window will appear. Click on "Next" if you want to install the FusionHDTV in the default directory. Otherwise, you can choose a different directory by clicking on "Browse".



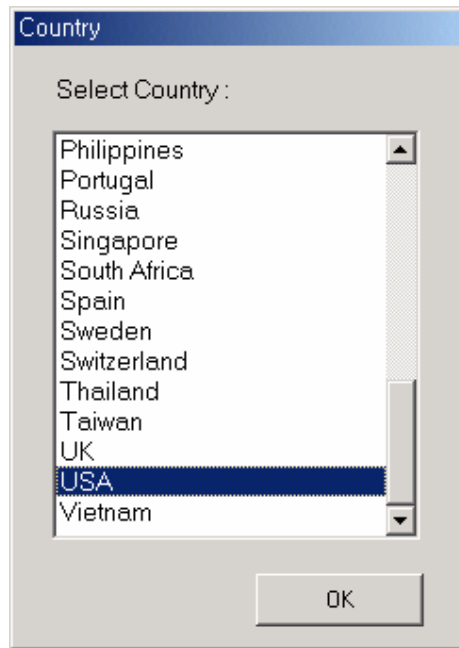
- 5) Press "Next" on the Destination Folder selection window.



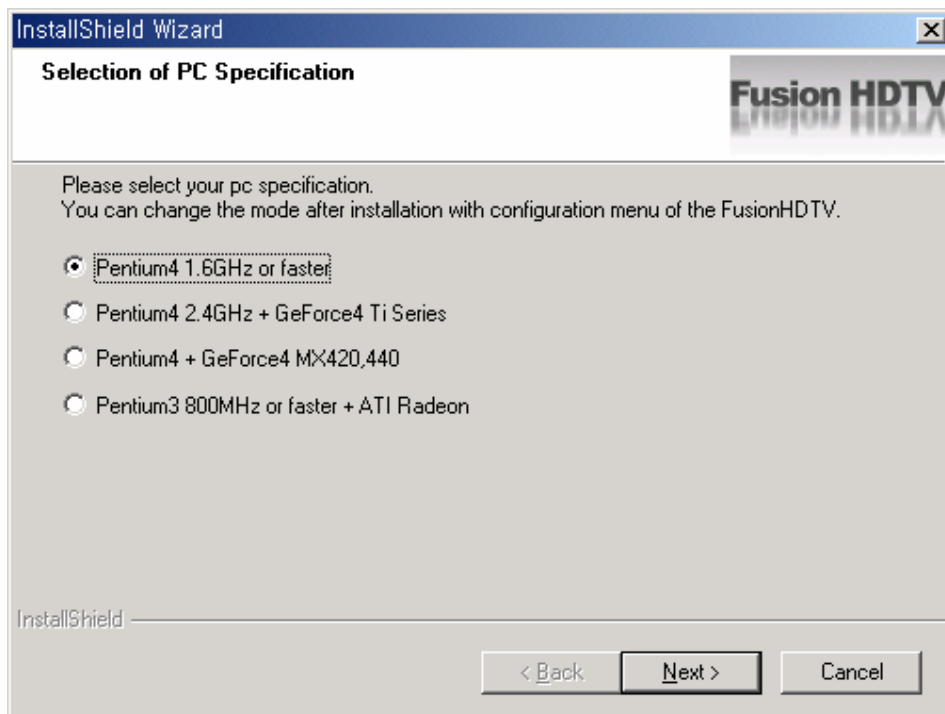
6) The "Setup status" window will appear.



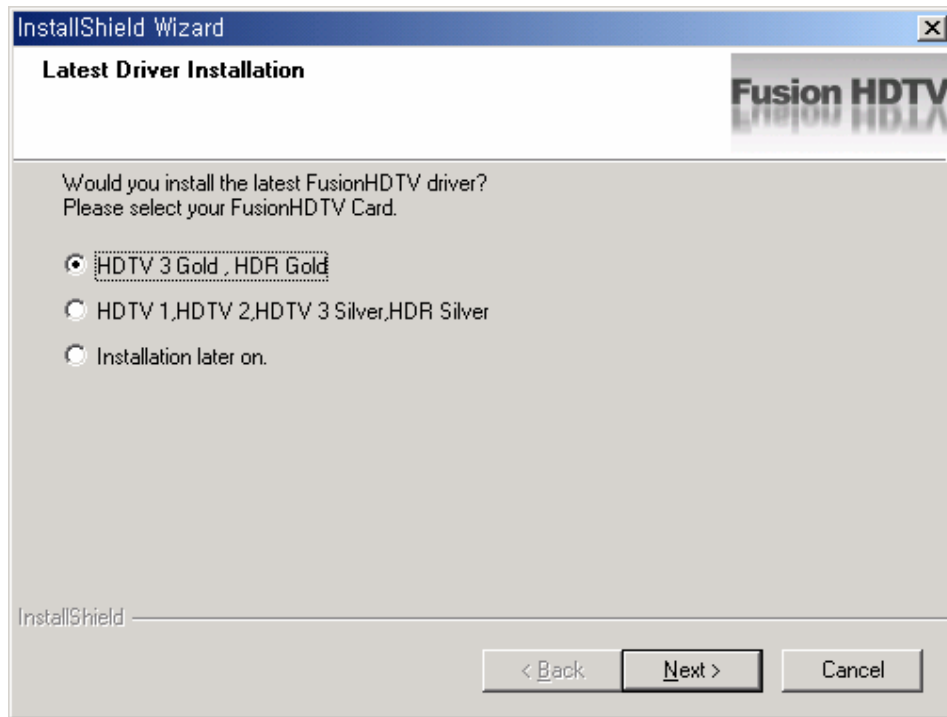
7) Choose your country, then click "OK".



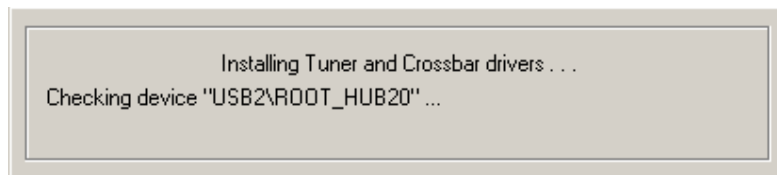
- 8) PC specification selection windows will appear. Please select the appropriate system. You can change the mode after installation with configuration menu of the application program. You do not need to reinstall the program with different options.



- 9) Select your FusionHDTV card, and Press 'Next' to install latest drivers.

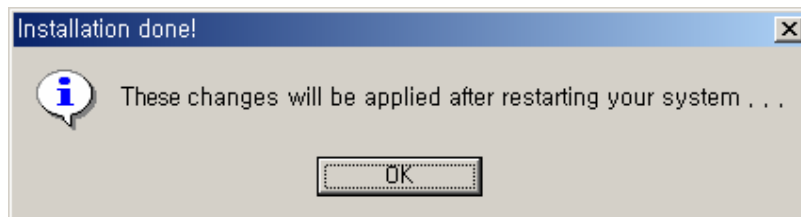


10) You will see the progress window.

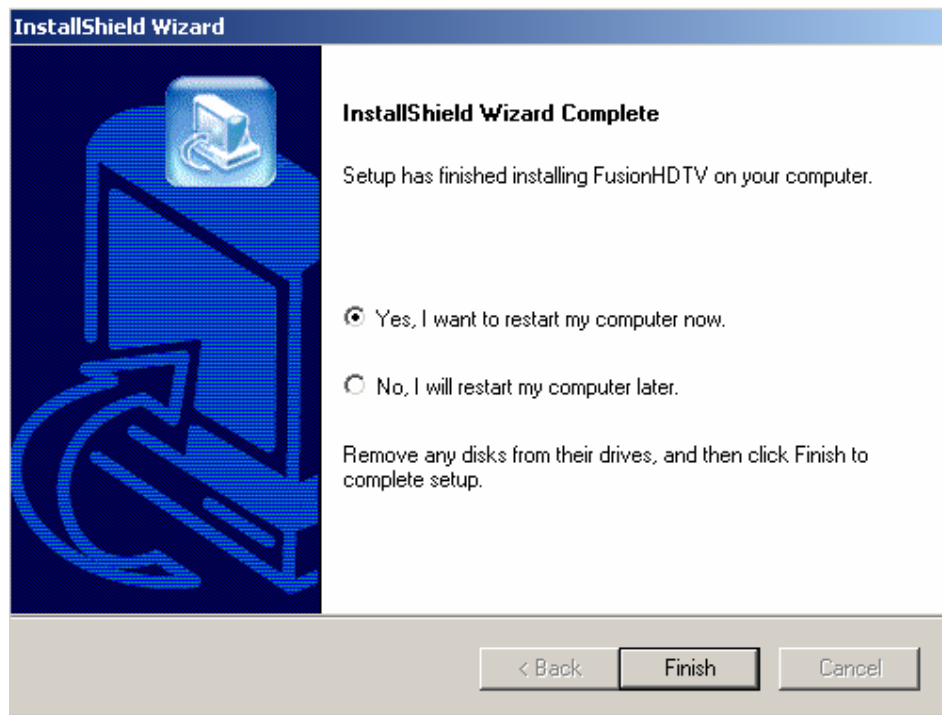


11) Press "Yes" for the digital signature message.

12) Following message indicates the completion of the setup.



13) By clicking the Finish button, the software installation is done.



- 14) When you reboot, the system will ask for the 4 drivers. Please click "Yes" when the digital signature window appears.

<Notes>

In certain cases, Windows will ask for the .sys files. You can locate the sys files in the C:\Program Files\DVico\FusionHDTV\driver folder.

2.1.3 Installing Microsoft DirectX 8.1

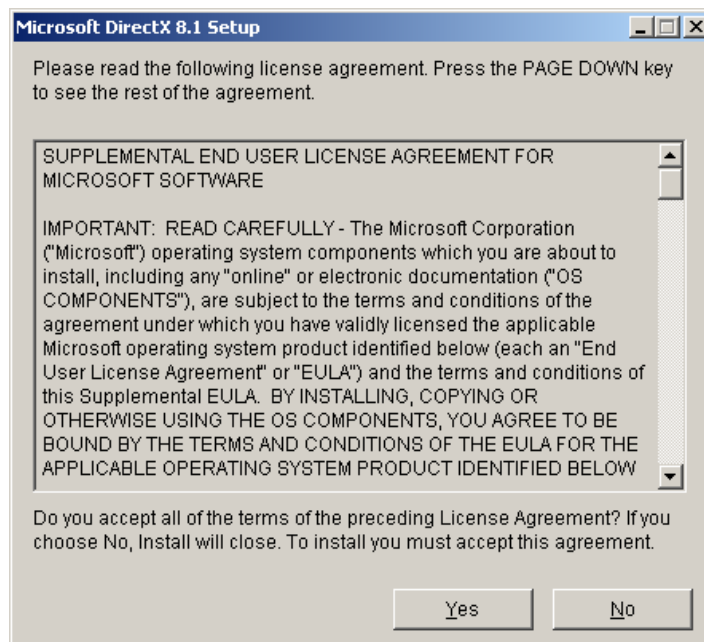
Important! Installing on Windows 2000 Professional or Windows XP

Before you install FusionHDTV software, be sure that you logged on as an account with Administrator privileges.

You can check the version of DirectX by typing “dxdiag” on the command line which appears with menu selection “start->run”

If you have DirectX8.1 or later already, you do not need to install DirectX8.1 again.

- 1) Run 'Install.exe' and then select “Install Direct8.1X”.
- 2) Read the License Agreement carefully, and then click on “Yes” if you agree.

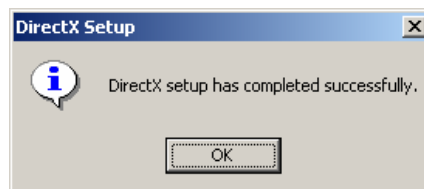


- 3) To start installing of DirectX, click on “Install DirectX”.



Tip If there is a DirectX already installed in the system, a different window will show up instead of the one above.

- 4) Click on “OK” to restart system and complete installation of the DirectX.



2.1.4 Installing the FusionHDTV remote transceiver

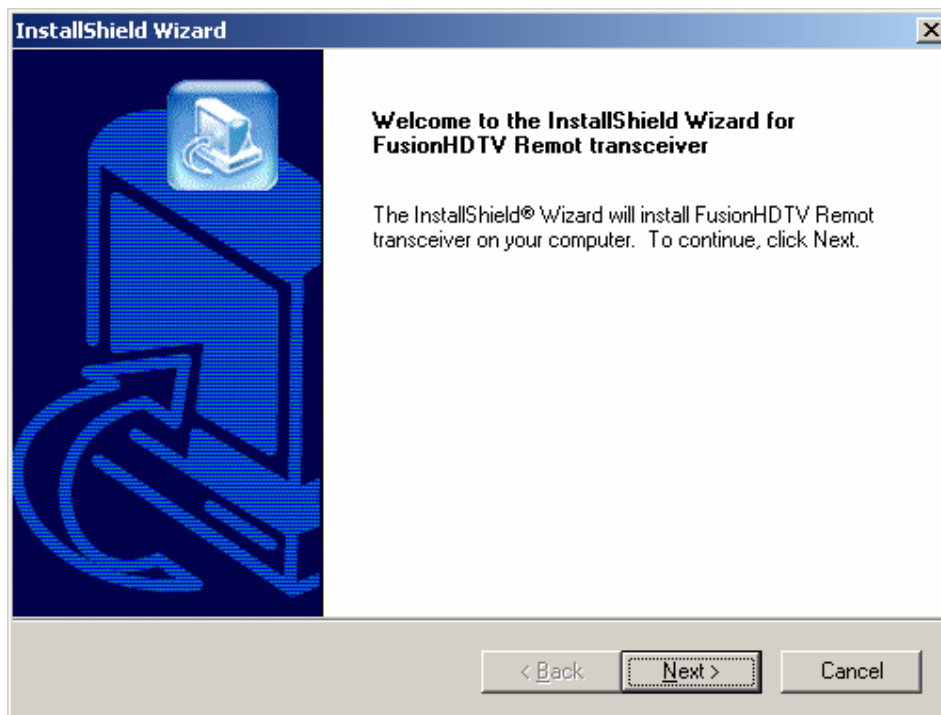
Installation Caution

- Remote transceiver is optional and can be purchased separately through FusionHDTV dealers.
- First, install the FusionHDTV application then install the FusionHDTV remote transceiver program.

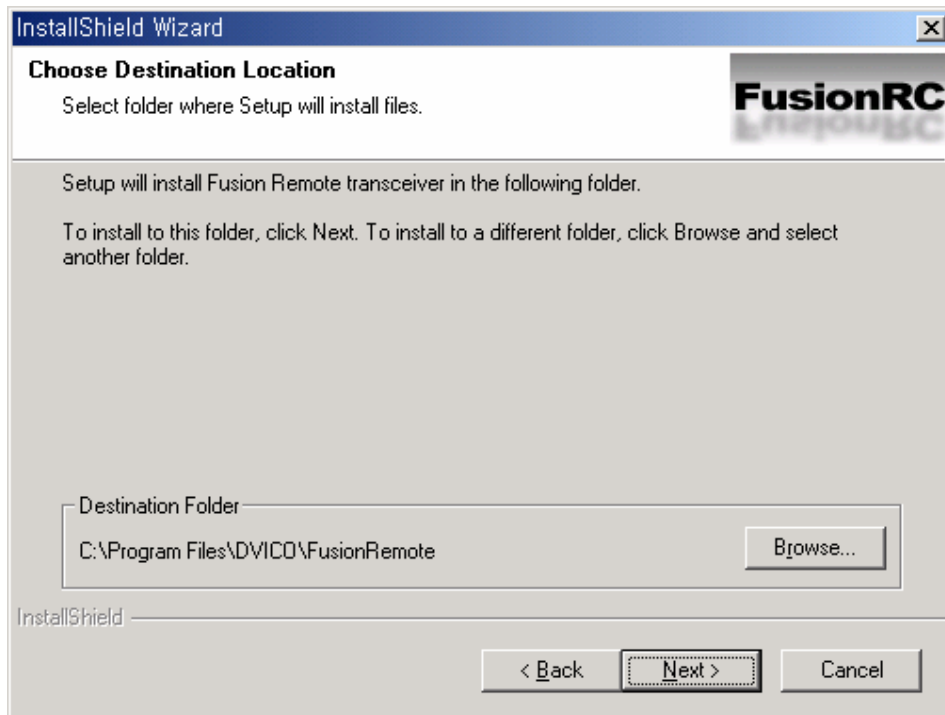
Important: Installation on Windows 2000 Professional or Windows XP

Before you install FusionHDTV software, be sure that you logged on as an account with Administrator privileges.

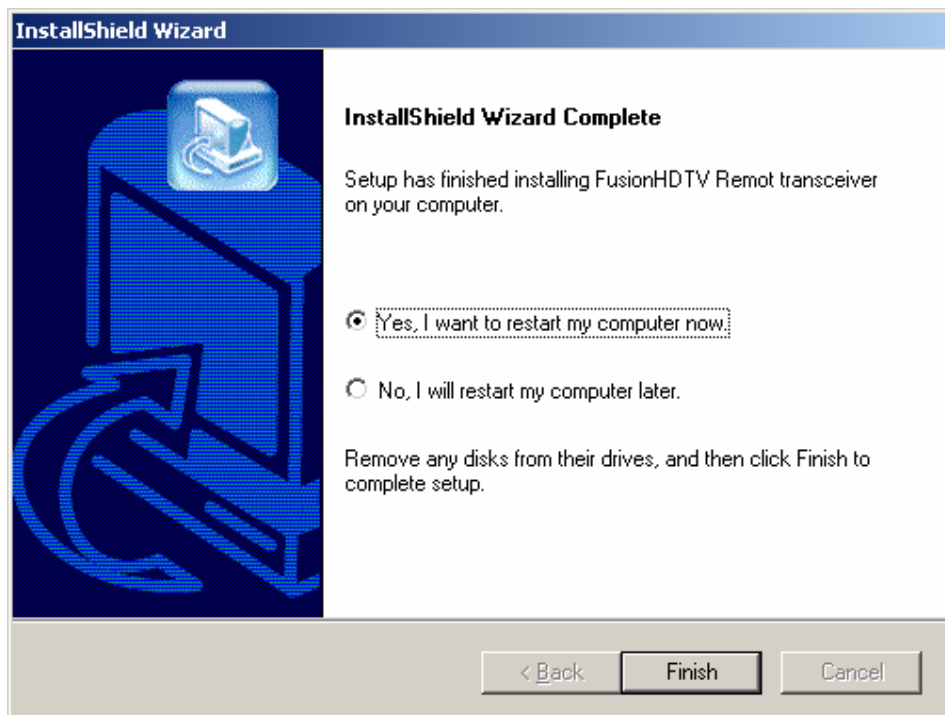
- 1) Select "FusionHDTV Remote transceiver Installation" at the Install.exe window.
- 2) Click "Next" to start the Remote transceiver installation.



- 3) The "Choose Destination Location" window will appear. Click on "Next" if you want to install the FusionHDTV in the default directory. Otherwise, you can choose a different directory by clicking on "Browse"



4) Click on the "OK" to restart and finish installation.



2.2 Driver installation under Windows ME

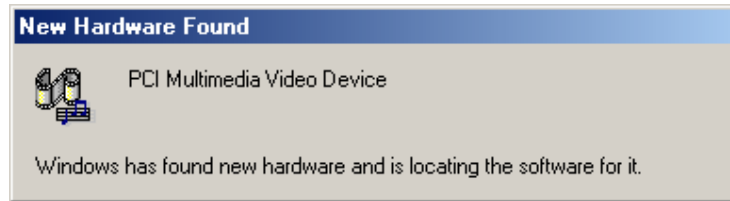
2.2.1 Before Installation

Make sure to install the software in the following order.

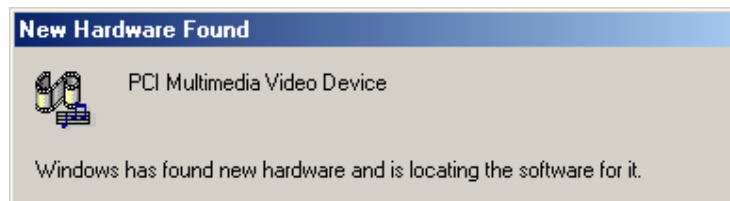
- 1) Install the Application software (refer to **2.1 Installing FusionHDTV Applications**)
- 2) Install Hardware(Board) (refer to **3.3 Board Installation**)
- 3) Install Windows ME Driver (refer to **2.2.2 Installing Windows ME driver**)
- 4) Check Windows ME device manger (refer to **2.2.3 Checking Windows ME Driver**)

2.2.2 Installing the Windows ME driver

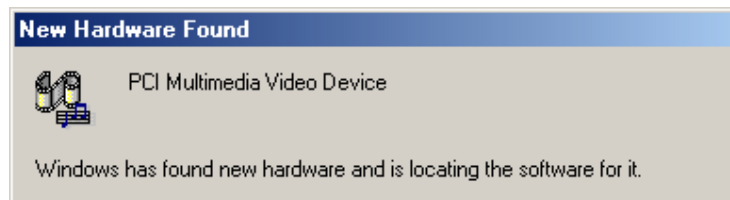
- 1) Insert the FusionHDTV board into the PCI local bus slot. When Windows ME starts, the Add New Hardware Wizard will pop up automatically.
- 2) The Found New Hardware window will pop and FusionHDTV 88x, WDM Video Capture driver will be installed automatically.



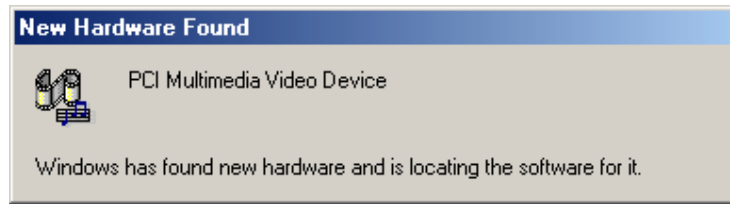
- 3) The Add New Hardware Wizard will pop up automatically and "FusionHDTV 88x,Transport Stream Capture(ATSC-A)" driver will be installed automatically.



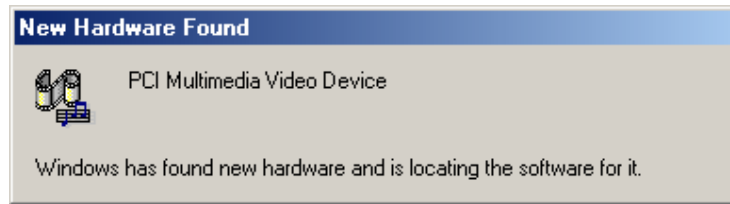
- 4) After the Files Needed Window appears, look for the 'zl88Tcap.sys' file by clicking the browse button. Select the driver directory under the installation directory. (ex : C:\Program Files\Dvico\FusionHDTV\driver)
- 5) If a version conflict message appears during installing, preserve existing file by pressing 'Keep'.
- 6) The Add New Hardware Wizard will pop up automatically and "FusionHDTV 88x, Thomson7611+LG3302 WDM TV Tuner" driver installation will be done automatically.



- 7) The Add New Hardware Wizard will pop up automatically and “FusionHDTV 88x, Crossbar” driver installation will be done automatically.



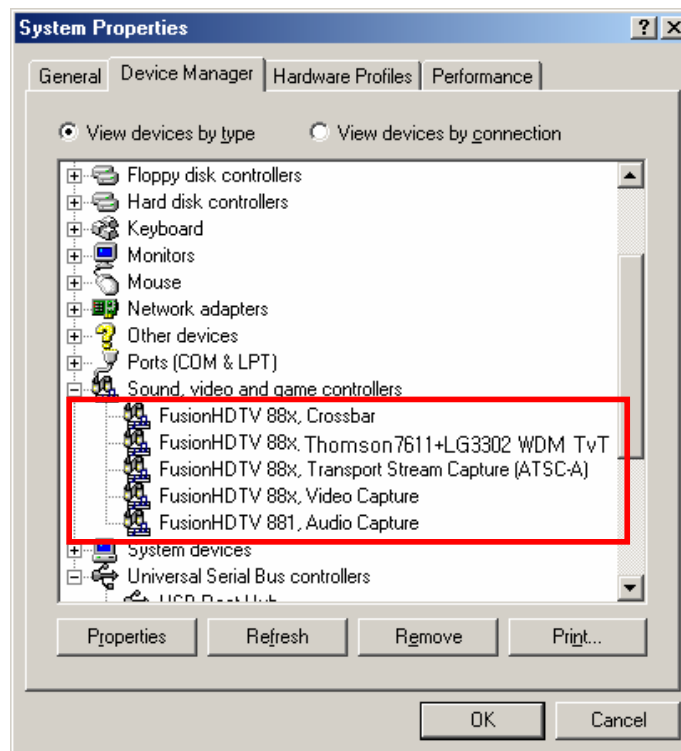
- 8) The Add New Hardware Wizard will pop up automatically and “FusionHDTV 881, Audio Capture” driver installation will be done automatically.



2.2.3 Checking Windows ME driver

If all four drivers are found in the device manager, the Windows ME driver is installed properly. Otherwise, you must reinstall the driver.

Right click the “My Computer” icon and select “properties” from the popup menu. Check whether you see four new devices starting with “Fusion” under the “Sound video and game controllers”.



2.3 Driver installation under Windows 2000 Professional

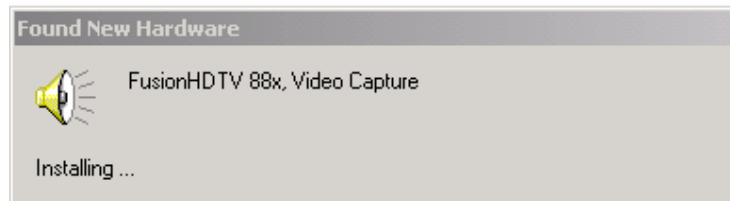
2.3.1 Before Installation

Make sure that you install the software in the following order.

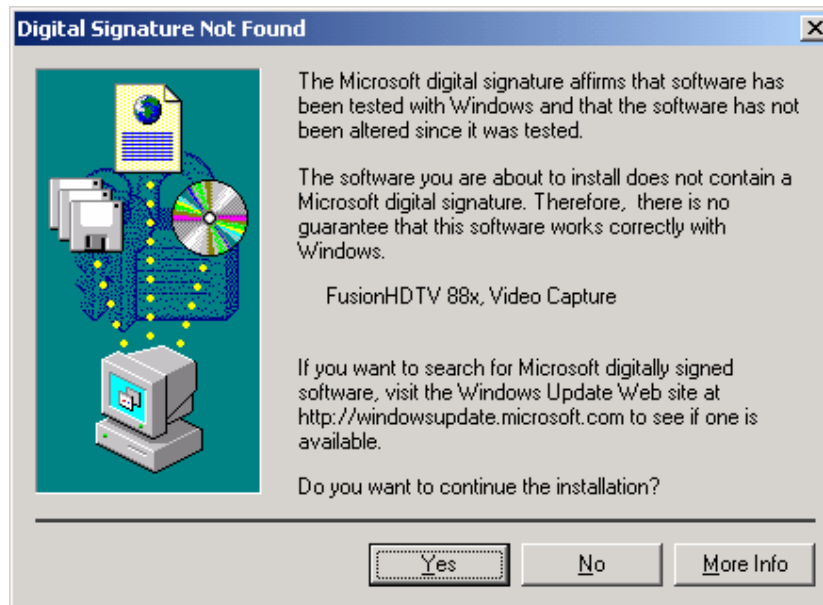
- 1) Install the Application software(refer to **2.1 Installing FusionHDTV Applications**)
- 2) Install hardware(board) (refer to **3.3 Board Installation**)
- 3) Install the Windows 2000 Drivers (refer to **2.3.2 Installing Windows 2000 driver**)
- 4) Check Windows 2000 device manager (refer to **2.3.3 Checking Windows Driver**)

2.3.2 Installing Windows 2000 driver

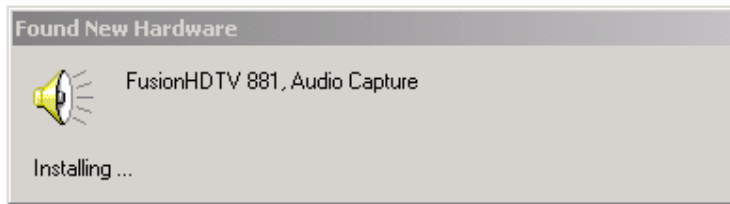
- 1) Insert the FusionHDTV board into the PCI local bus slot. When Windows 2000 starts, the Add New Hardware Wizard will pop up automatically.



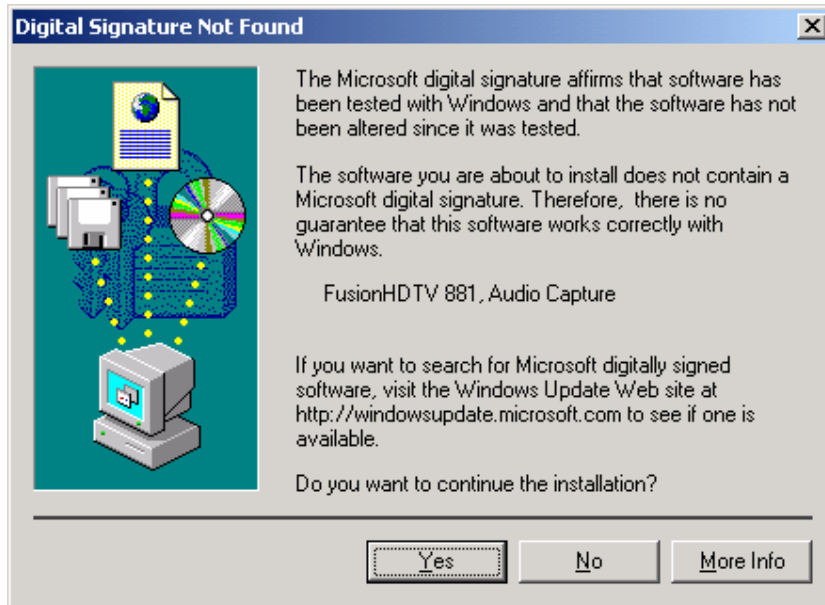
- 2) When the Digital Signature Not Found window appears, Click on "Yes".



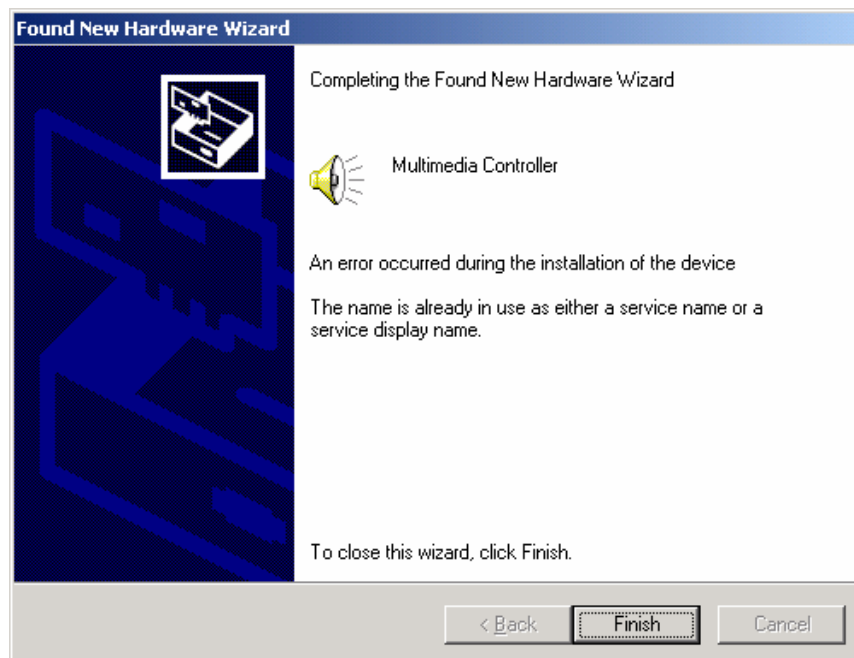
- 3) The "Found New Hardware" Wizard window will pop up automatically.



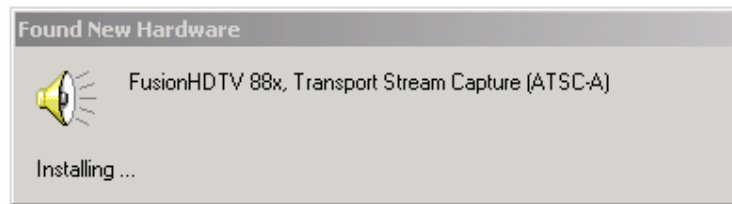
- 4) When the Digital Signature appears, Click on "Yes".



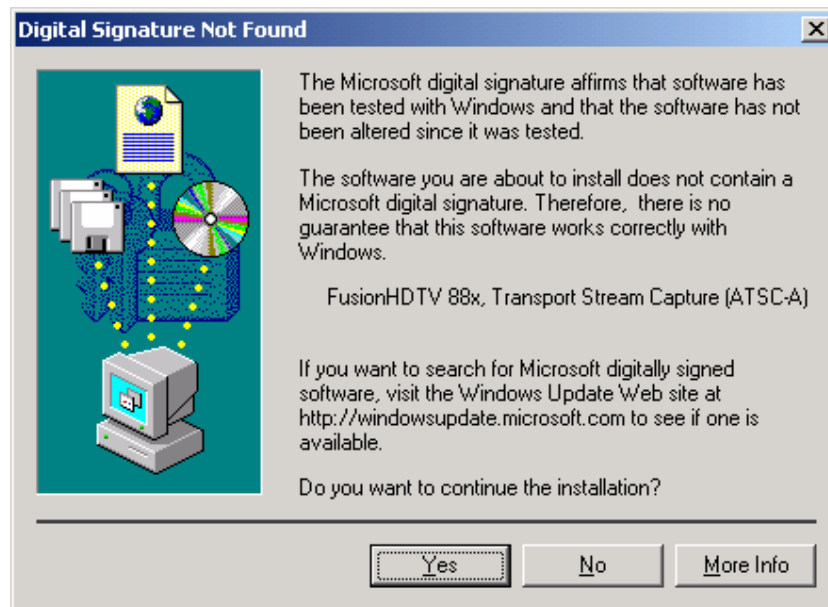
- 5) When the "Completing..." window appears, Click on "Finish".



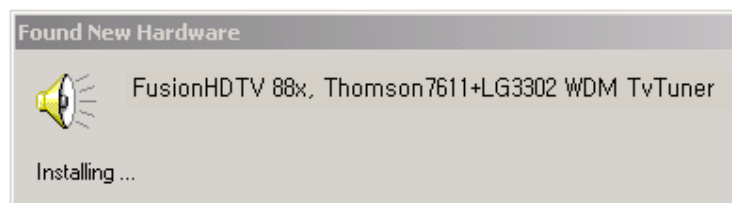
- 6) The "New Hardware Wizard" window will pop up automatically.



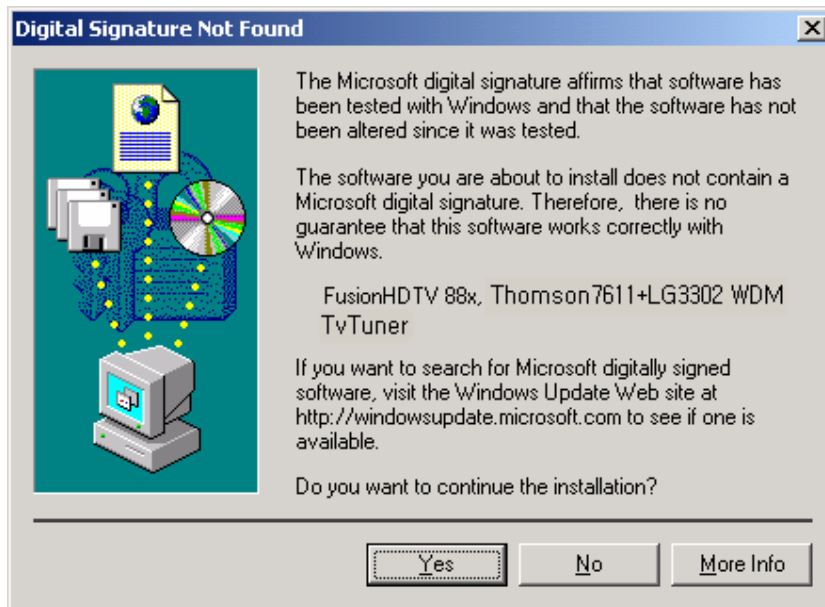
- 7) When the "Digital Signature Not Found" window appears, Click on "Yes".



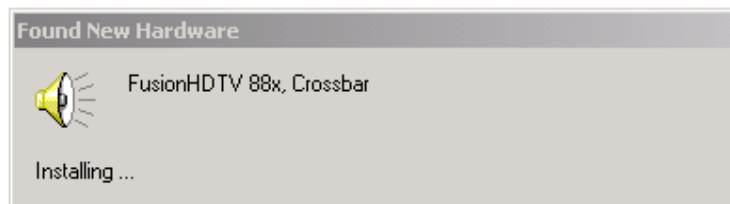
- 8) The "New Hardware Wizard" window will pop up automatically.



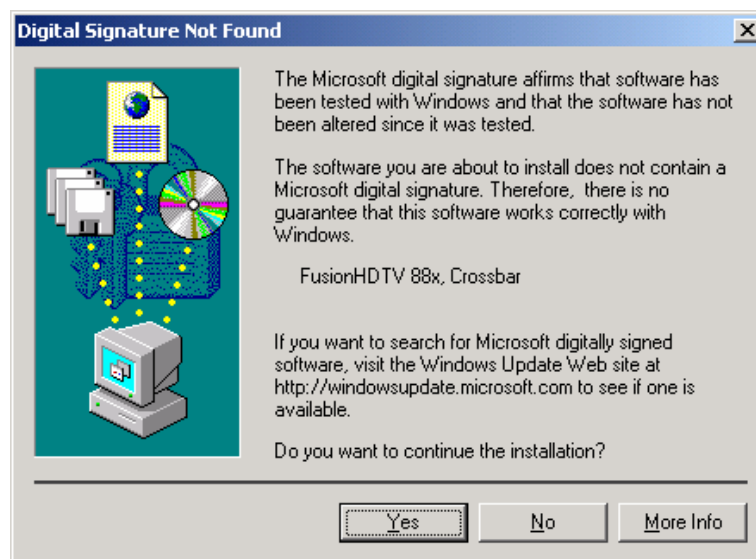
- 9) When the "Digital Signature Not Found" window appears, Click on "Yes".



10) The “New Hardware Wizard” window will pop up automatically.



11) When the “Digital Signature Not Found” window appears, Click on “Yes”.



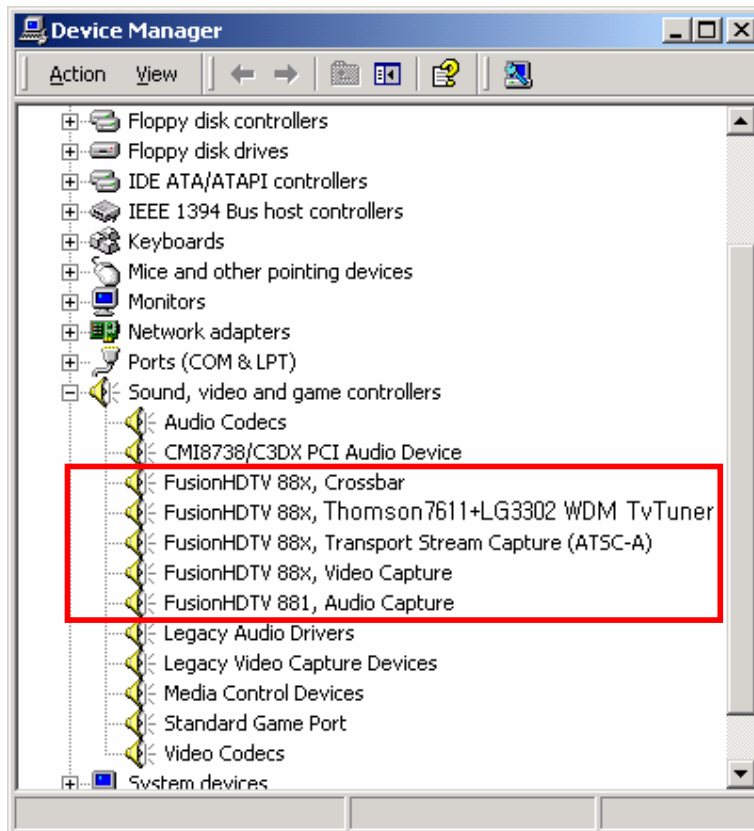
12) If a driver file look for, click the browse button. Select the driver directory under the installation directory (ex : C:\Program Files\Dvico\FusionHDTV\driver) or Driver folder of installation CD..

2.3.3 Checking the Windows 2000 driver

Right click the “My Computer” icon and select “properties” from the popup menu. Select Hardware-> Device Manger

You must see four devices properly installed under “Sound video and game controllers”.

If you do not see all four drivers installed correctly, please re-install the drivers.



2.4 Driver installation under Windows XP

2.4.1 Before Installation

Make sure that you install the software in the following order:

- 1) Install the Application software (with reference to **2.1 Installing FusionHDTV Applications**)
- 2) Install Hardware (refer to **3.3 Board Installation**)
- 3) Install the Windows XP drivers (with reference to **2.4.2 Installing Windows XP driver**)
- 4) Check Windows XP Device Manager (with reference to **2.4.3 Checking Windows XP Driver**)

2.4.2 Installing Windows XP drivers

If you already installed the FusionHDTV software, insert the FusionHDTV board into the PCI local bus slot.

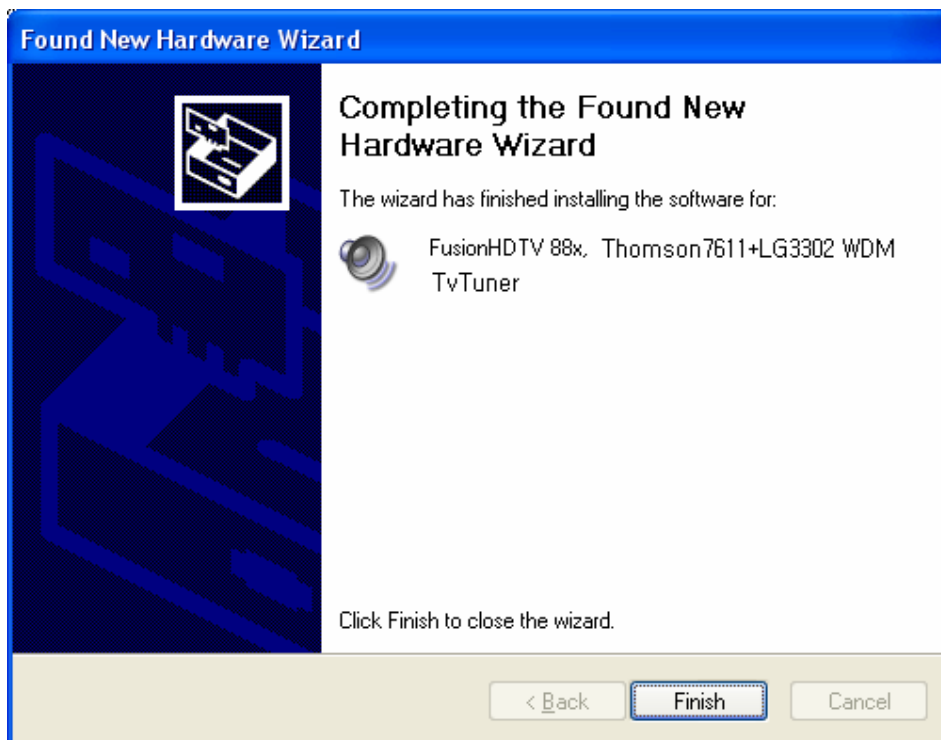
- 1) When the “Add New Hardware Wizard window” appears, select “Install the software automatically (Recommended)” and then click “next”.



- 2) When the "FusionHDTV 88x, Thomson7611+LG3302 WDM TvTuner" window appears, Click "Continue Anyway".



- 3) After files are copied, Click "Finish" if the FusionHDTV 88x, Thomson7611+LG3302 WDM TvTuner driver is properly installed.



Tip

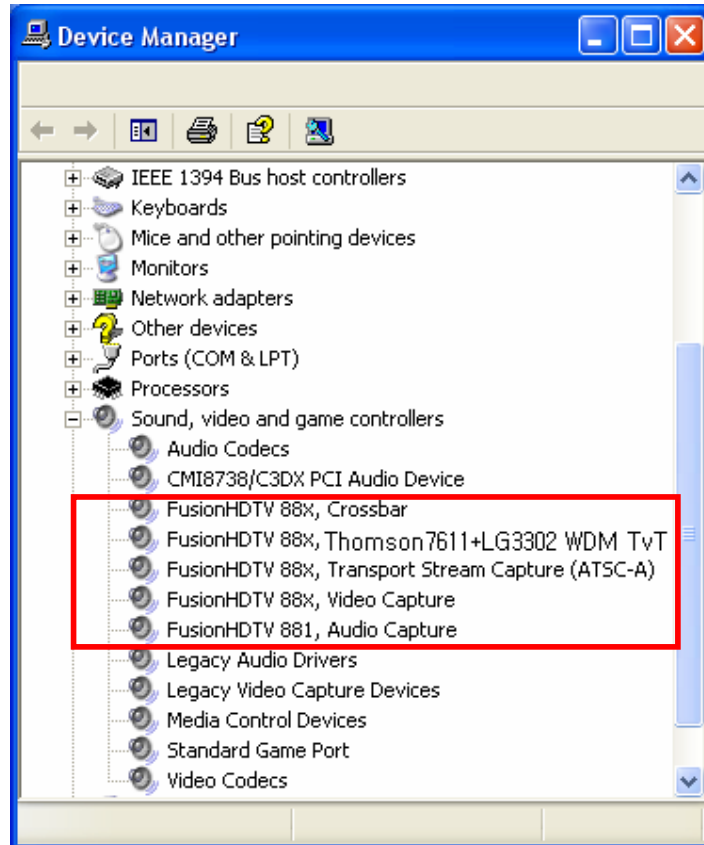
Using this way, you may install "FusionHDTV 881, Audio Capture ", "FusionHDTV 88x, Transport Stream Capture(ATSC-A)", "FusionHDTV 88x, Video Capture ", "FusionHDTV 88x, Crossbar "drivers.

2.4.3 Checking the Windows XP driver

Right click the “My Computer” icon and select “properties” from the popup menu. Select Hardware-> Device Manger.

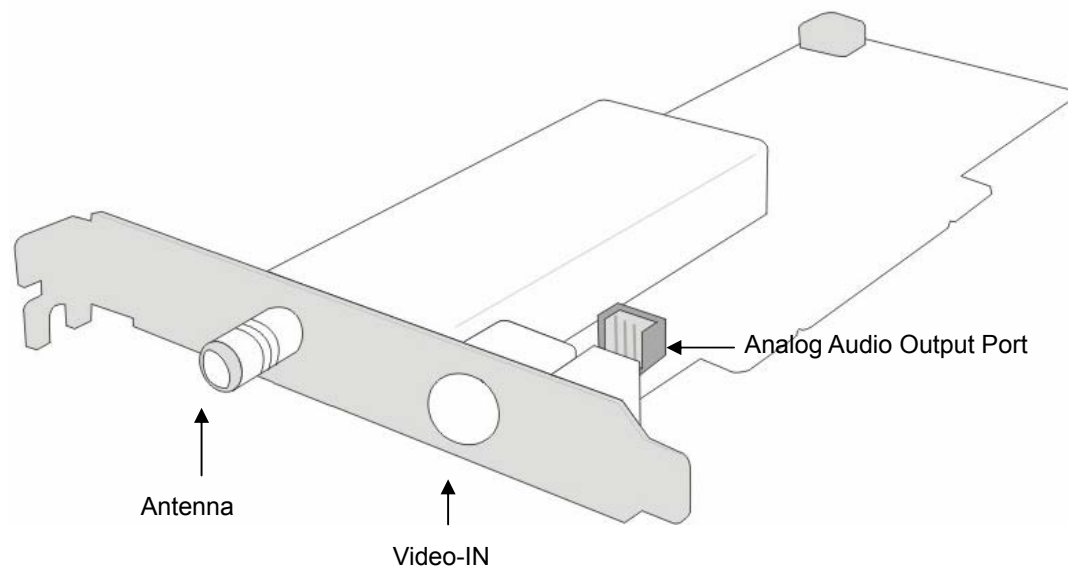
You must see four devices properly installed under the “Sound video and game controllers”.

If you do not see all four drivers installed correctly, please re-install drivers.



3 Hardware Installation

3.1 About the Board



- Antenna: Connects to the terrestrial signal
- Video-IN : Connects to the Cable signal (This is used when the cable company sends the HDTV signal using the QAM method)
- Video -IN: For external video sources.
- Analog Audio Output Port : For the audio of analog sources.

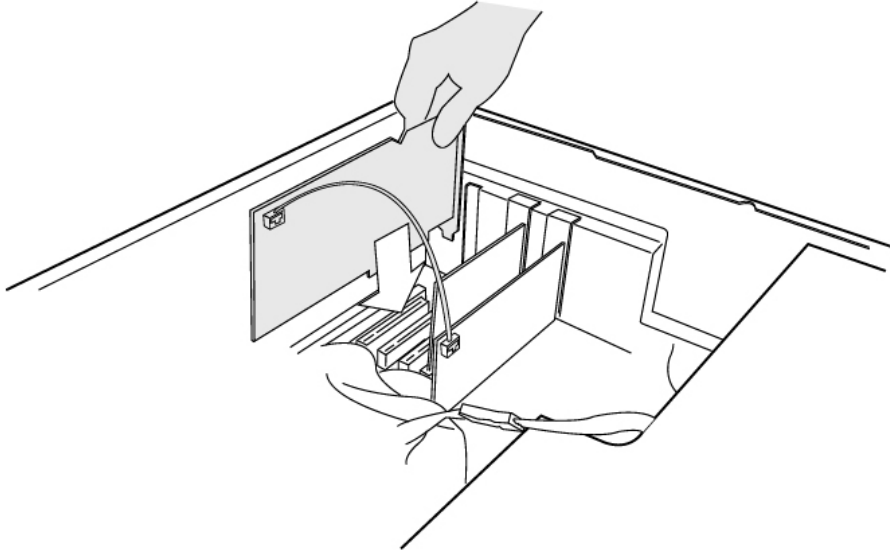
3.2 Before Installation

Warning:

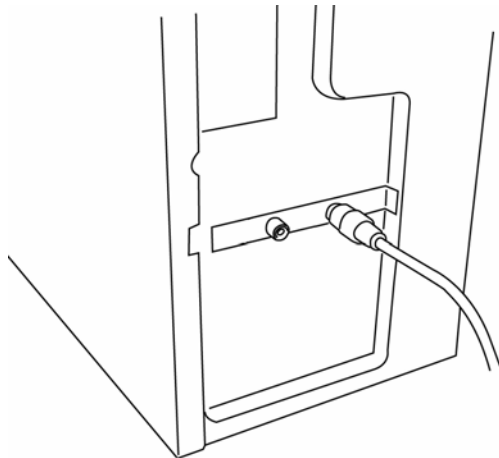
- 1) Before installing, first touch the grounded part of the PC to protect the components on the board from static electricity.
- 2) Before installing the board, the system's power should be turned off. Installing the Board when the system's power is "ON," will damage the system or the Board.
- 3) Please remove the power cord from the PC.

3.3 Board Installation

- 1) Connect the analog audio output port to the sound card (CD-IN or Aux) for Video or composite (Windows ME requires for analog TV audio.)
- 2) Insert the board by holding the top part of the board and push it until it completely locks into the slot. Fasten the screw on the bracket using a screw driver.



- 3) Connect the Antenna input port to an antenna cable.

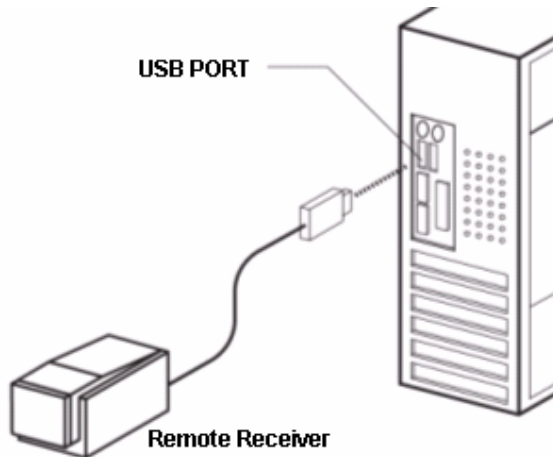


Tip After the board installation, when the power is on, the driver search message will appear. Please refer to chapter 2 for driver Installation.

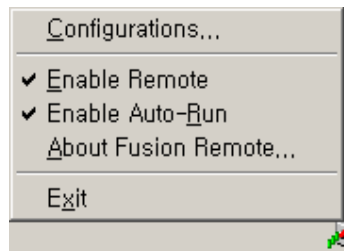
3.4 Remote Installation

* Remote transceiver is optional and can be purchased separately through FusionHDTV dealers.

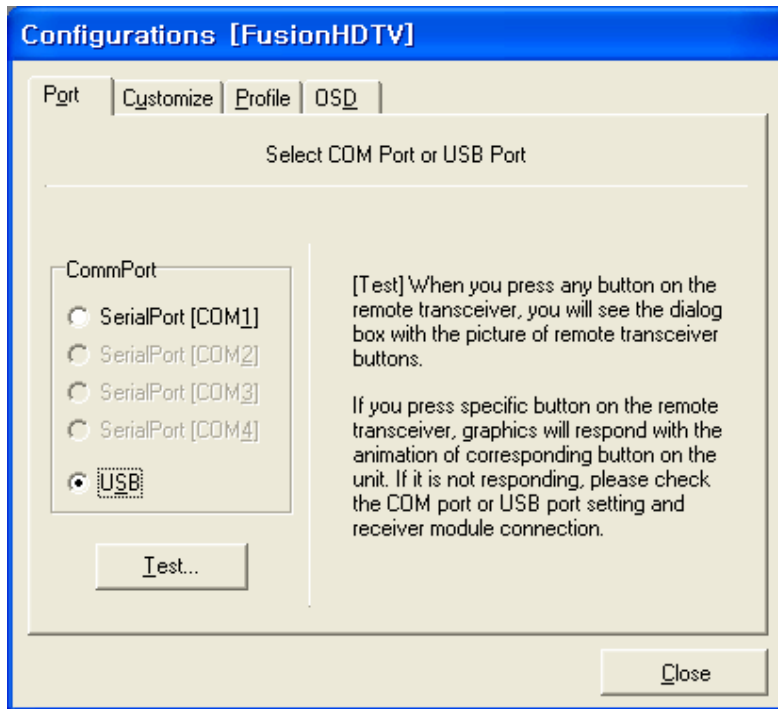
- 1) Connect the IR receiver module to the PC's serial port(COM1, COM2...) or USB port. There are two types receivers serial or USB



- 2) After IR receiver and FusionHDTV remote software is installed, please reboot and start the configuration by right clicking the FusionRemote icon at the low right bottom of the screen. If you do not see the FusionRemote icon in the tray, please start the program by Start->Program->DVICO->FusionRemote.



- 3) Please select the port that IR receiver module is attached and press the any button on the remote transceiver. A Dialog box with the remote transceiver buttons will appear.



Tip FusionRemote program will start automatically when the PC is booted. You can check the FusionRemote program availability at the Task Bar of Windows like the picture below.




4 Using FusionHDTV

Please check www.dvico.com for any updated software or manuals.

4.1 Starting and Quitting

Click Start, point to Program->DVICO->FusionHDTV, or double click on the FusionHDTV icon in the program folder to execute FusionHDTV.

When you first execute the program, it will ask for a channel scan. Please say "Yes" for the channel scan.

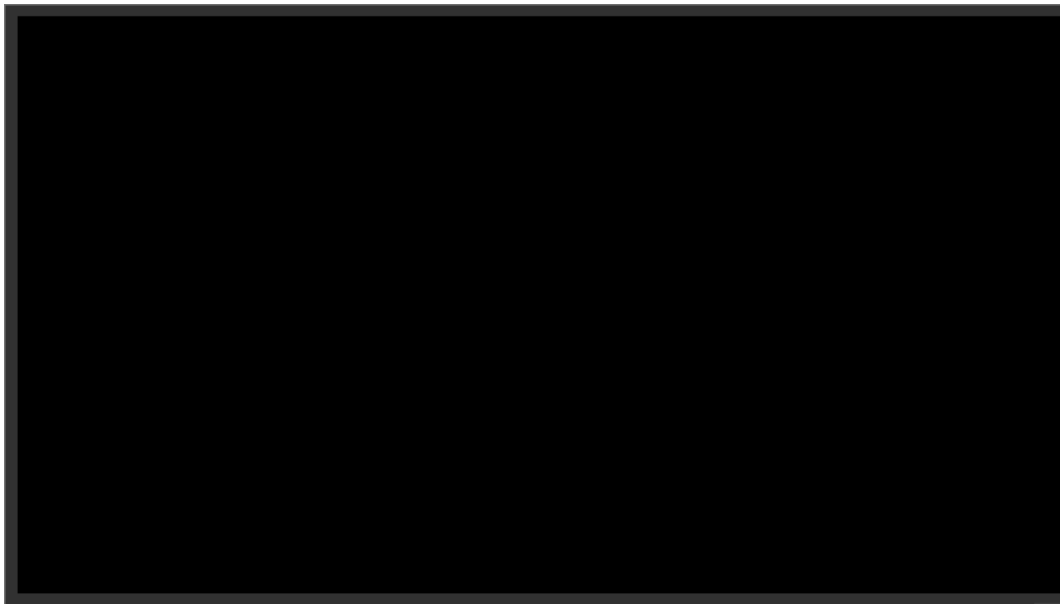
By clicking  (Exit Button), the software is terminated.

4.2 Display setup

FusionHDTV Software composed with View panel and control panel.

4.2.1 Video Window

It shows the HDTV picture inside the window.



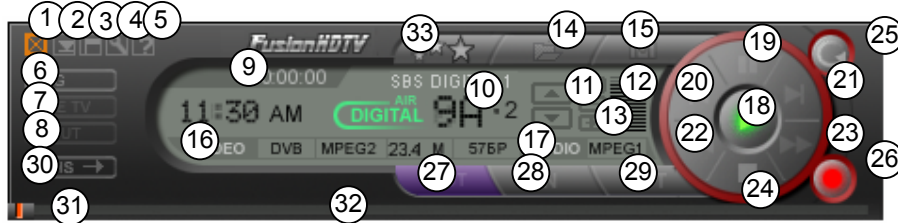
If you click right on the video window, a popup menu will appear.



- Configuration: Refer to **4.3** : Configuration
- Show Controller: Show/Hide FusionHDTV's controller.
- Reservation Record : Used to Reservation Record.
- Input Source: Change input source.
- Favorites Channel : Add your favorite programs into favorite list before watching them.
- Display Size: Resize display.
- Aspect Ratio: Adjust display ratio.
- Analog TV De-interlacing: removes interlace to progressive conversion artifact.
- CUT mode file playback: Change cut edit playback mode.
- Always On Top: Shows FusionHDTV application always on top.
- Second language : Second language can be heard with checking "Audio > Second Language" option when it is available in digital broadcasting.
- Show Wallpaper(ALT-W)
- File Playback: Play input signal(or file).
- Stop : Change Stop.
- Help: Shows Help information.
- About...: Shows Program Information
- Exit: Quit FusionHDTV.

4.2.2 Controller

This indicates Control Buttons.



- 1) Exit button
- 2) Minimize
- 3) Maximize button
- 4) Configuration button
- 5) Help button
- 6) Reserve REC button: is used to Reservation record.
- 7) LiveTV button: Changes to live TV mode.
- 8) Input button: is used to select input signal.
- 9) Time: Total elapsed time played.
- 10) Channel/Input button: This mode shows the channel number. If you click on the small channel number, it will show the channel list and sub channel name.
- 11) Channel UP/DOWN button
- 12) Volume: Shows and controls the current volume level. Use the mouse or keyboard up/down button to change the volume level.
- 13) Mute button: Mute ON/OFF.
- 14) Open file button: Is used to open recorded files.
- 15) Snapshot button: Is used for still image capture.
- 16) Video status
- 17) Audio status
- 18) Playback button: Is used to play an input signal (or file).
- 19) Pause button: Is used to pause playing or replay.
- 20) Start button: Is used to go to the first scene.
- 21) End button: Is used to go to the end of a scene.

22) Review button: Is used to search backward.

23) FF button: Is used to search forward.

24) Stop button

Tip

You can press stop when recording if you want to record the content without viewing.

25) Instant Replay button: goes 10 sec backward by default. You can configure the instant replay time in the configuration menu.

26) Record button

27) Cut Edit button: Is used to edit a recorded file.

28) Mark in button: Mark in the start point where the cut starts.

29) Mark out button: Mark in the end point where the cut ends.


30) DVHS button: Connect / Disconnect with DVHS.

31) Time moving slider: Shows location currently playing. If you drag it with the mouse, you can move anywhere in the white line.

32) Time moving Bar: Is used to drag the slider bar.

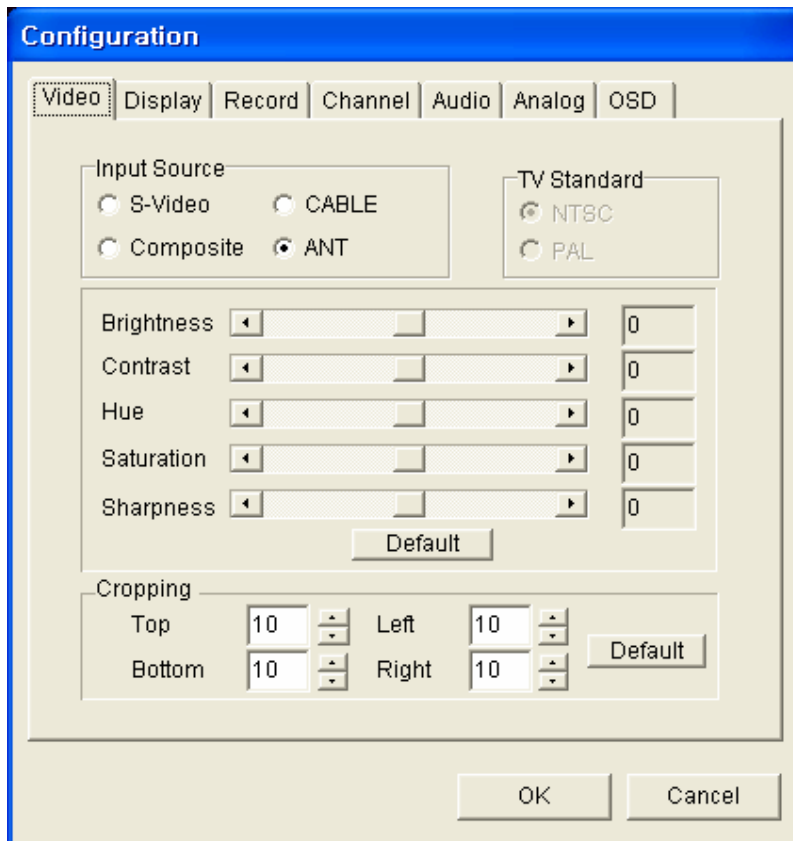
33) Favorites Channel : Add your favorite programs into favorite list before watching them.

4.3 Configuration

Configuration: (), you can Configure many parameters.

4.3.1 Video

Video settings tab.



Input Source : Selects between multiple external video sources.

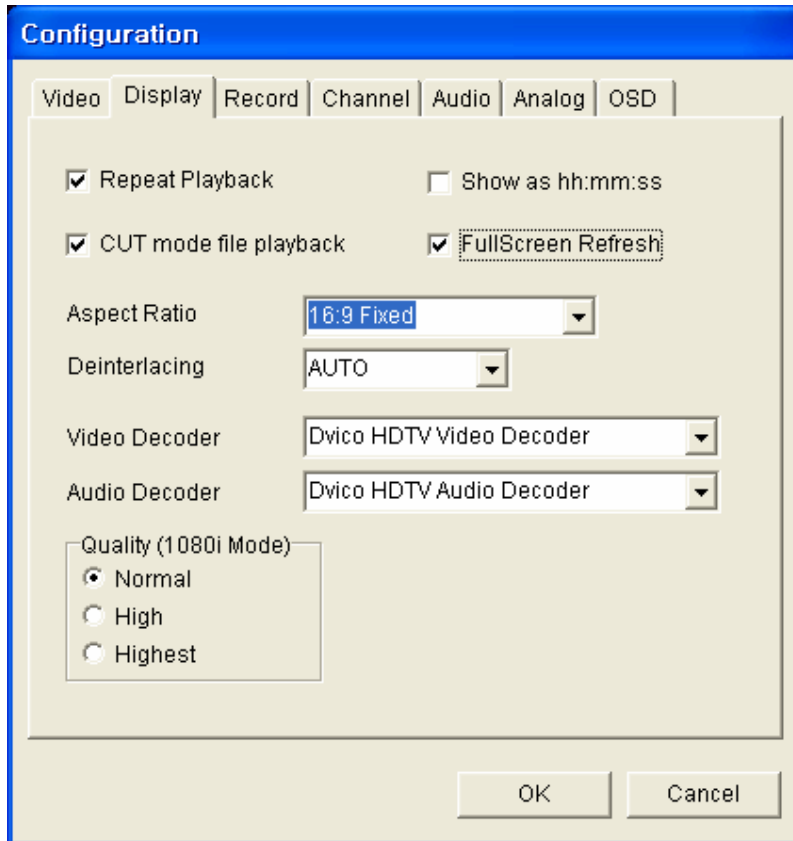
You can select antenna input between Tuner (OTA) or Cable

Cropping : flickering lines near the top or bottom of the picture can be removed with cropping function

Video tap is possible with adjust Brightness/contrast/Hue/Saturation/Sharpness.

Click on the " OK", and you can play adjusted display.

4.3.2 Display

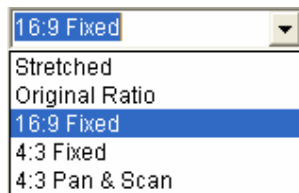


Repeat playback: It will play the file endlessly if checked.

Show as hh:mm:ss: Shows time from 00:00:00.

CUT mode file playback

FullScreen Refresh : Fix 60Hz in Fullscreen monitor.



Aspect Ratio :

De-interlacing: Select BOB or WEAVE in DxVA video decoder.

- **Weave** : Best for less moving picture
- **BOB** : Best for moving picture

Video Decoder: Is used to select video decoder.

< Dvico HDTV Video Decoder >

- For Non DxVA compatible graphics cards. Usually the ones from Matrox.
- Normal
 - Intel Pentium 4 : CPU 1.6GHz, AGP 4X
 - AMD Athlon XP : CPU 1600+, AGP 4X
- High
 - Intel Pentium 4 : CPU 2.4GHz, FSB 533, AGP 4X
 - AMD Athlon XP : CPU 2400+, AGP 4X
- Highest
 - Intel Pentium 4 : CPU 2.4GHz, FSB 800, AGP 8X
 - AMD Athlon XP : CPU 2400+, AGP 8X

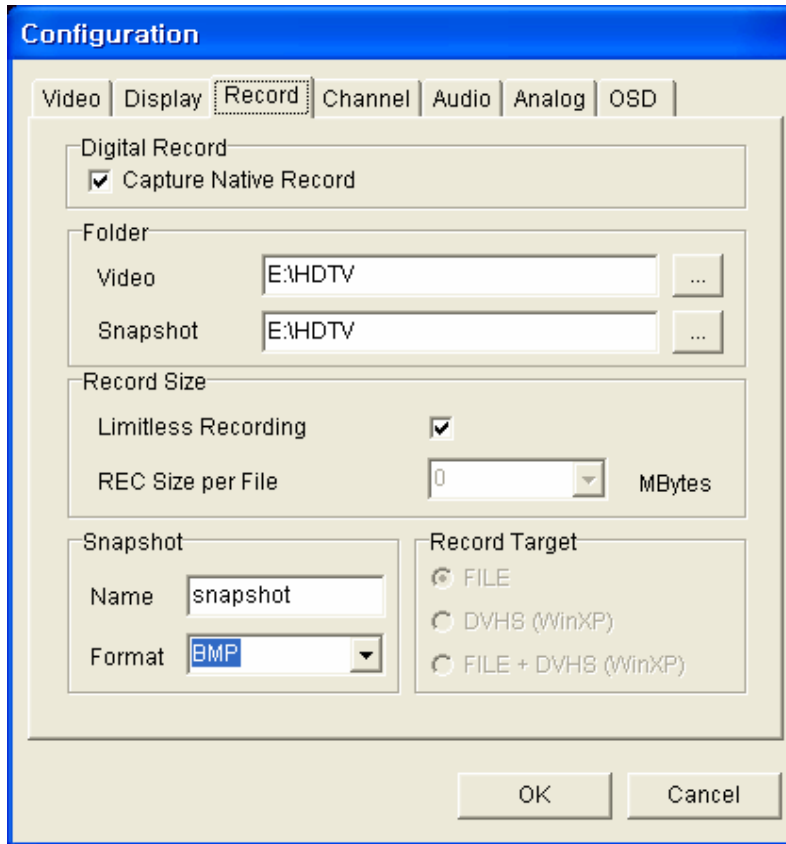
< Dvico HDTV (DxVA) Video Decoder>

- For DxVA compatible graphics cards. ATI Radeon, Geforce4 MX, Ti series cards.

Audio Decoder: Is used to select the audio decoder.

4.3.3 Record

This section indicates Record settings.



Capture Native Record : You can record Tp stream to mpeg format with maintaining Video, Resolution, Audio information. (only with the sub-channels).

Recording Folder: Sets the folder of files being recorded.

Limitless Recording: If the record drive is formatted with NTFS, you are able to record a file continuously on a hard drive.

REC SIZE per file: sets maximum file size to be recorded. The program will create a new file and start recording if the current file exceeds this limit.

Deleting File Query: When the hard disk is full, this dialog box will appear.

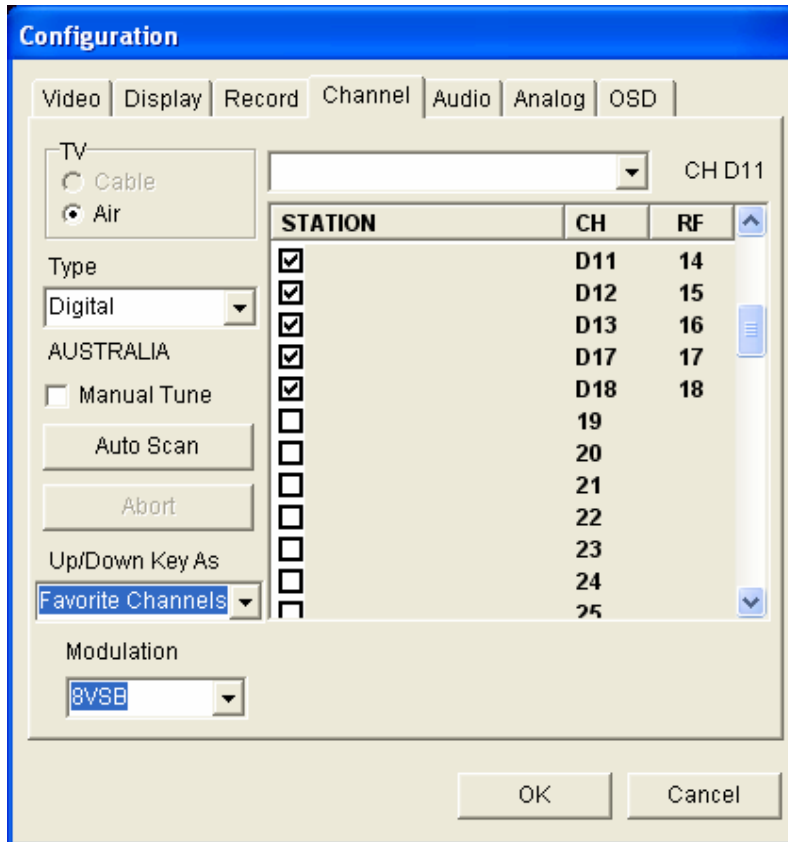
Snapshot Folder: Sets the folder for files of snapshots.

Snapshot Format: Sets the format to JPG or BMP.

Record Target : Records FILE or DVHS or FILE+DVHS

4.3.4 Channel

This section indicates Channel settings: terrestrial digital analog channels and cable digital /analog channels.



TV : Select Cable or Air depending on your antenna connection.

Type : Scan wanted type. You can scan both.

Manual Tune : Check/uncheck wanted/unwanted channels. You can change the station name by clicking on names.

Auto Scan : Scan starts for currently available channels.


Abort : Cancel channel scan and return to the original.

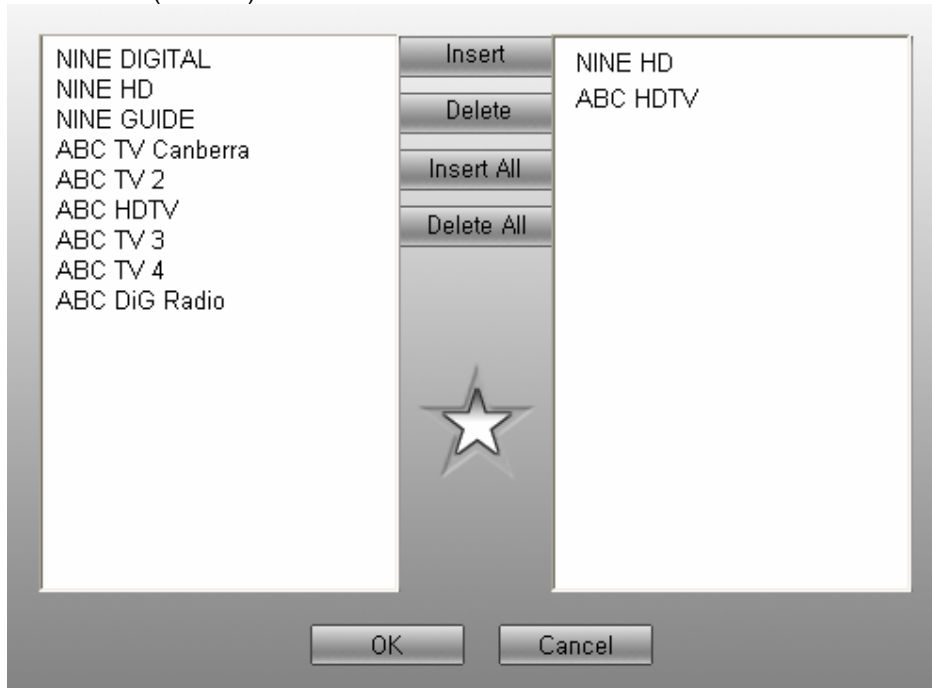
UP/Down Key As : UP/DOWN arrow key of keyboard/remote can be mapped to favorite channels/ RF channels/ all sub-channels. default is the favorite channels. if 0 items in it, then RF channels.

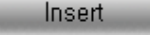



4.3.5 Add To Favorite Channel List

Add your favorite programs into favorite list before watching them.

Hit the STAR() button above the Channel number.



Click **Insert**  button and add programs from Channel list to Favorite list.

Click **Delete**  button and delete the programs from Favorite list

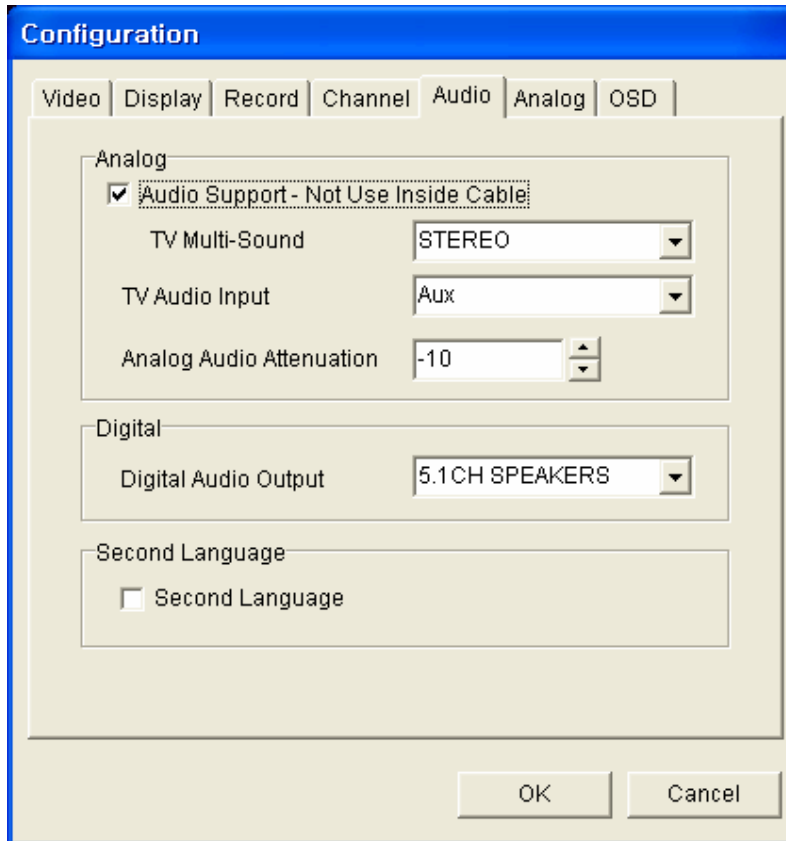
Click **Insert All** button and add all of the programs from Channel list to Favorite list

Click **Delete All** button and delete all of the programs from Favorite list

Click **OK** and set up current favorite list.

4.3.6 Audio

This section indicates Audio settings.



TV Multi-Sound : is used to select the analog mono ,stereo or Multi-Language.

TV Audio Input: When you watch outer input(S-VHS,Video), you can set the input of sound card.

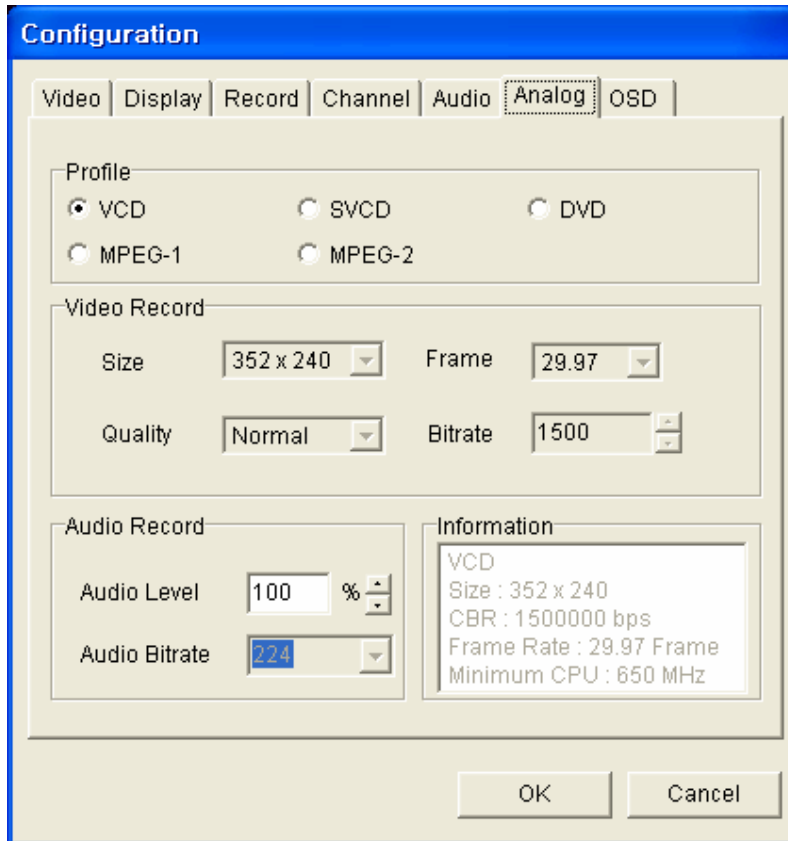
Analog Audio Attenuation : Analog audio level can be adjustable.

Digital Audio Output: is used to select the audio output: 2 CH SPEAKER, 5.1CH SPEAKERS or S/PDIF.

Supports the second language in digital broadcasting : Second language can be heard with checking "Audio > Second Language" option when it is available in digital broadcasting.

4.3.7 Analog

This section indicates Analog settings.



Size(NTSC) : Initialize to VCD : 352*240 , S-VCD : 480*480 ,MPEG-1 : 320*240 MPEG2 : 640*480 ,DVD : 720*480

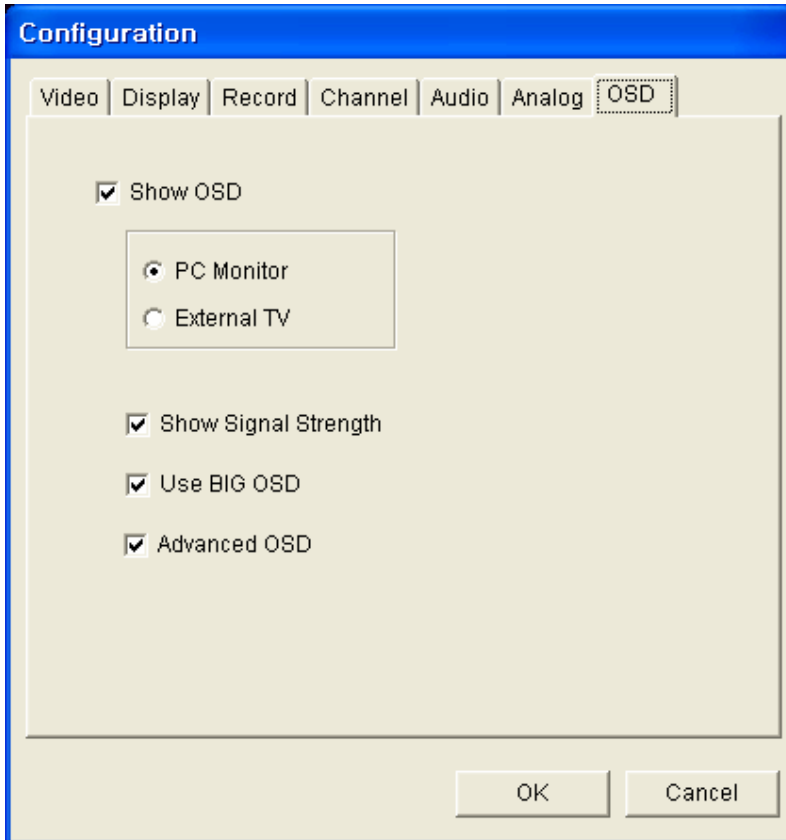
Size(PAL) : Initialize to VCD : 352*288 , S-VCD : 480*576 ,MPEG-1 : 320*288 MPEG2 : 720*576 ,DVD : 720*576

Quality : When MPEG-1,MPEG-2,DVD ,You can select Lowest,Low,Normal,High,Highest.

Record Audio Level : when recording the analog signals, The audio level can be adjustable.

Audio Bitrate : When MPEG-1,MPEG-2, you can select audio bitrate.


4.3.8 OSD







Show OSD: Is used to show channel and volume; on screen display.


Show Signal Strength : Is used to show Signal Check.(% or db)

Use BIG OSD : Is used to FusionRemote.

Advanced OSD : If you click  (MENU button) on remote controller, you can set the Configuration at Fullscreen.

  (Channel button : Shift between menu)


  (Volume button : Change Setting)

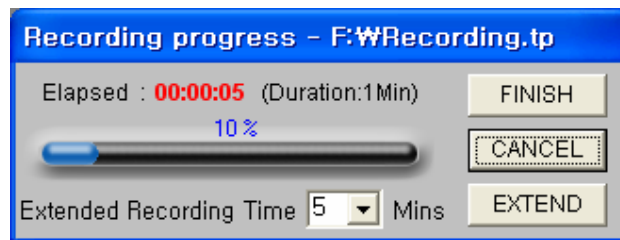
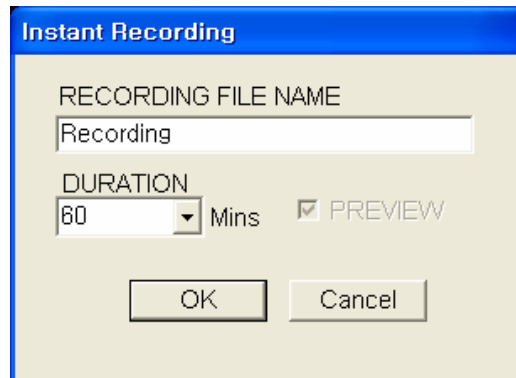
 (Play button : Go Sub-menu or Escape)

You can use Volume down key for exit to the file list.

4.4 Record

4.4.1 Manual Record

When you want record On-Air right away, click  (Record button) on FusionHDTV's controller.




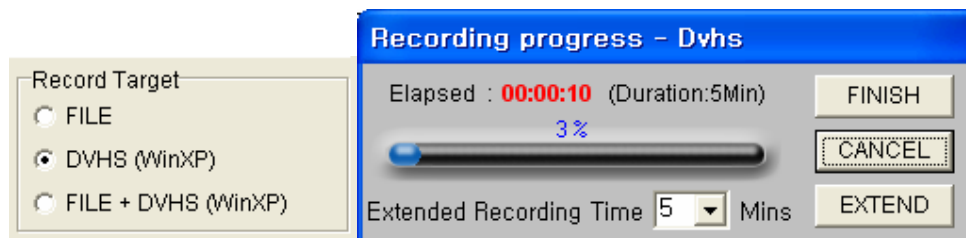
If you want to terminate recording, click on the "Finish" button. The files recorded within that time will be saved.


If you want to cancel recording, click on the "Cancel" button.

When you click the cancel button while recording, you 'll get a message selecting Yes or No.

EXTEND : You can extend the recording time while manual/ reservation recording.

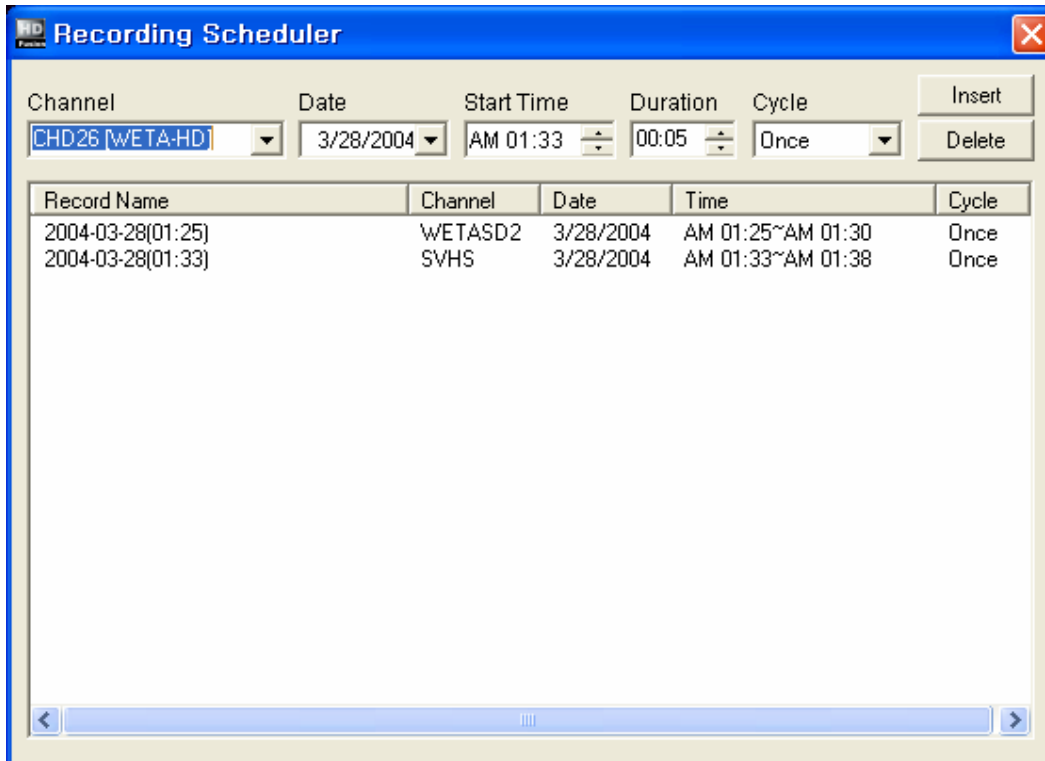
DVHS Recording : After Record target select, If you want record On-Air to DVHS, click  (Record button) on FusionHDTV's controller.



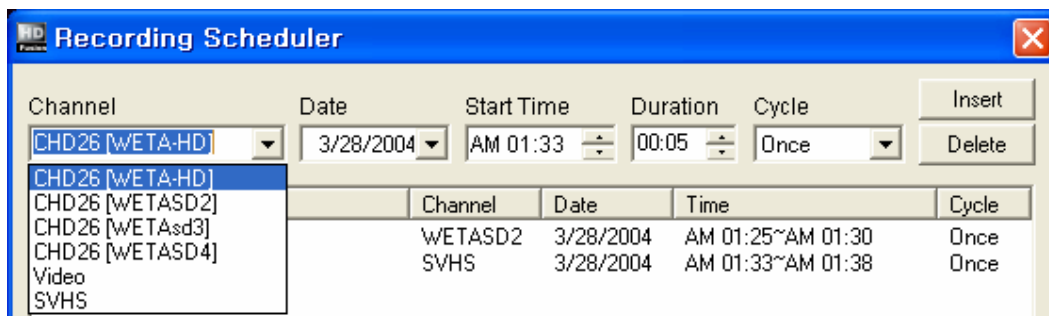
When you want record to DVHS from File, open File and click  (Record button) on FusionHDTV's controller.


4.4.2 Recording Scheduler


This mode is enabled by pressing popup menu(Recording Scheduler).



You can easily set the Channel/Date/ start time / Duration/Cycle of the TV program you want to record.



Click **Insert** () button and add Recording Schedule list.

Click **Delete** () button and delete Recording Schedule list.

TIP Record is enable that computer is ON during reservation recorded time.

4.5 Playing Files

If you click on the “open file” button on the controller, you can play a file.

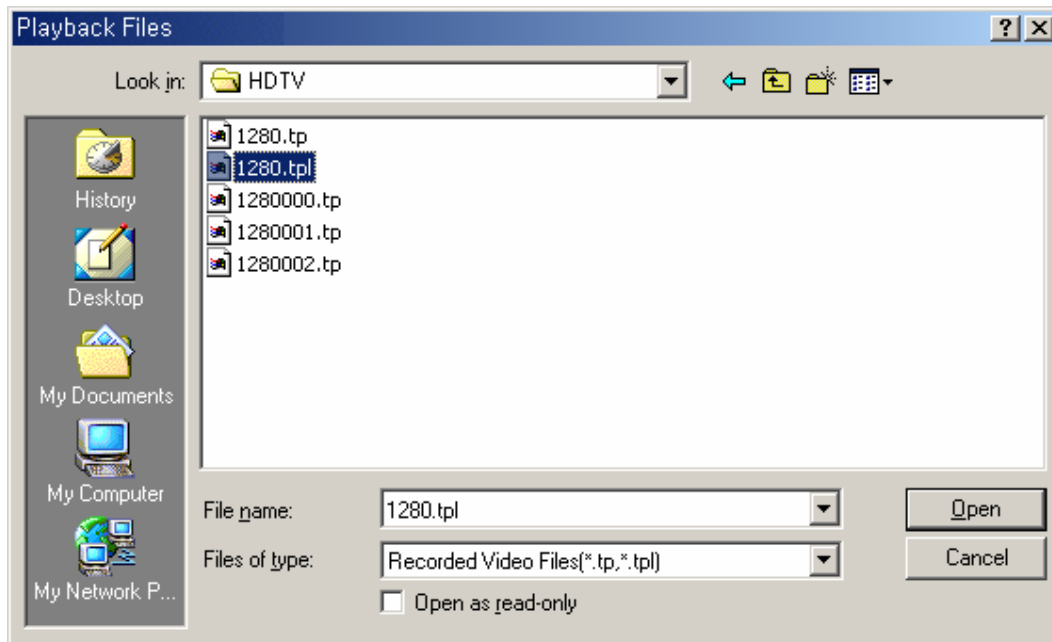
You can also select multiple files for playback.

Tip Difference between a *.tp and *.tpl file:

*.tp files are recorded files that are formatted for HDTV


*.tpl file is a file that represents multiple files when one program is recorded to multiple files.

You can conveniently play one program by selecting this .tpl file.

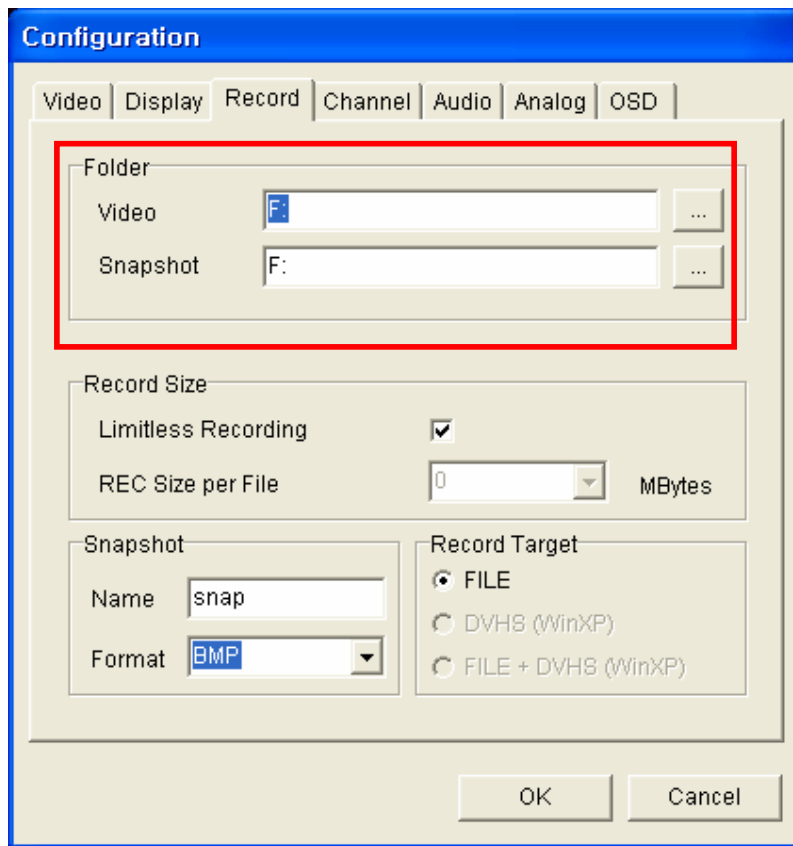


4.6 SnapShot Capturing

FusionHDTV provides high resolution still screen capture capability in live playback as well as in file playback mode.

Click  the snapshot button for capturing a snapshot of LiveTV while in playback or file playback mode.

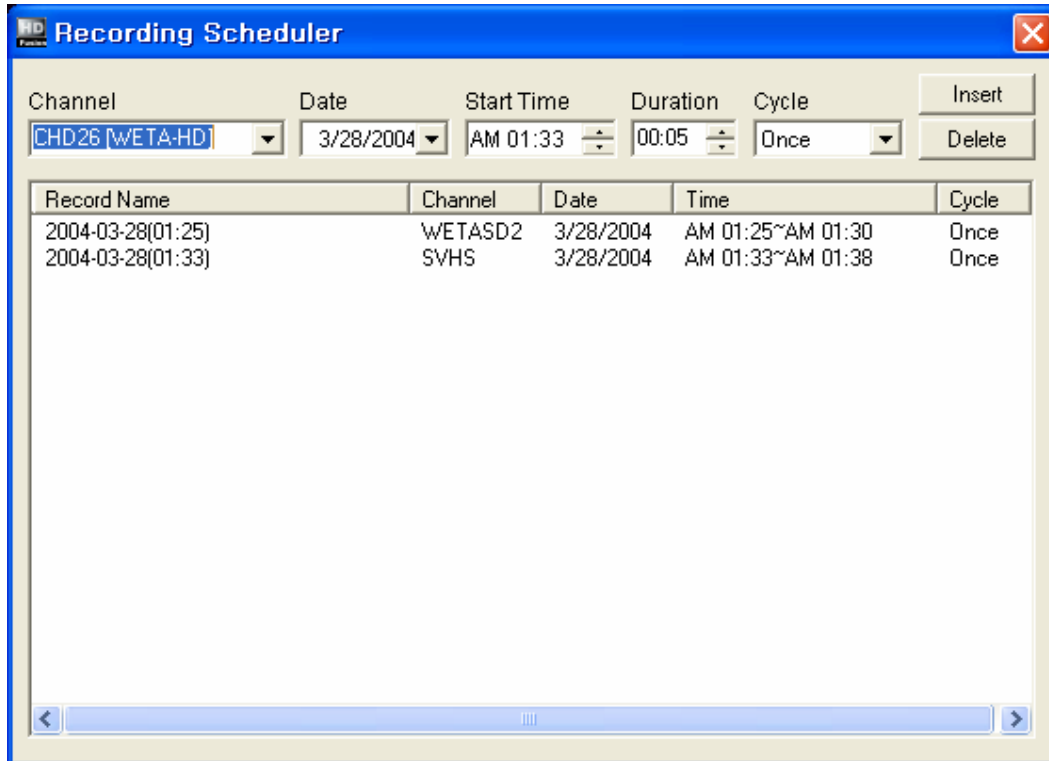
In the Record Tab, you can set the file name and file format.



4.7 Using EPG

4.7.1 Recorded Scheduler List

Recording Scheduler list shows the program that you reserved. If you need to cancel reservation, select the program and click button (Delete).



4.7.2 TitanEPG

EPG(Electronic Program Guide) tells you exactly what you can see at your location. You can use EPG to see quickly what's on for digital and analog broadcasts, cable, satellite, and datacasting services



When you first visit TitanTV, Click TitanTV icon() and you must sign up() to become a member before viewing your channel guides.



Most likely there will be an updated version of the TitanEPG Information on Titan web site

Please check the site ([Http://www.titan.com](http://www.titan.com)).

4.7.3 EPG Program

The main feature on this page is the programming grid. This grid is divided lengthwise by station/channel number and widthwise by time (in three-hour increments). You may have to scroll to see all channels/programs available to you.



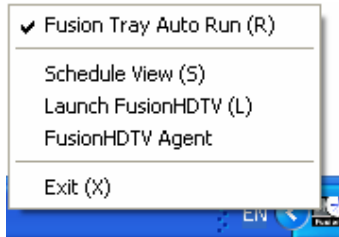
- 1) TitanTV logo in top left hand corner
- 2) Watch Now icon( HD) must be present
- 3) PVR icon( HD) must be present. Red “HD” must be present in one or more program cells
- 4) All channels must have program listings data
- 5) Variety of networks in channel lineup

- 6) Variety of genres (color codes) in program grid
- 7) My Favorites tab present
- 8) Legend of genres present
- 9) Sub-channel programming present

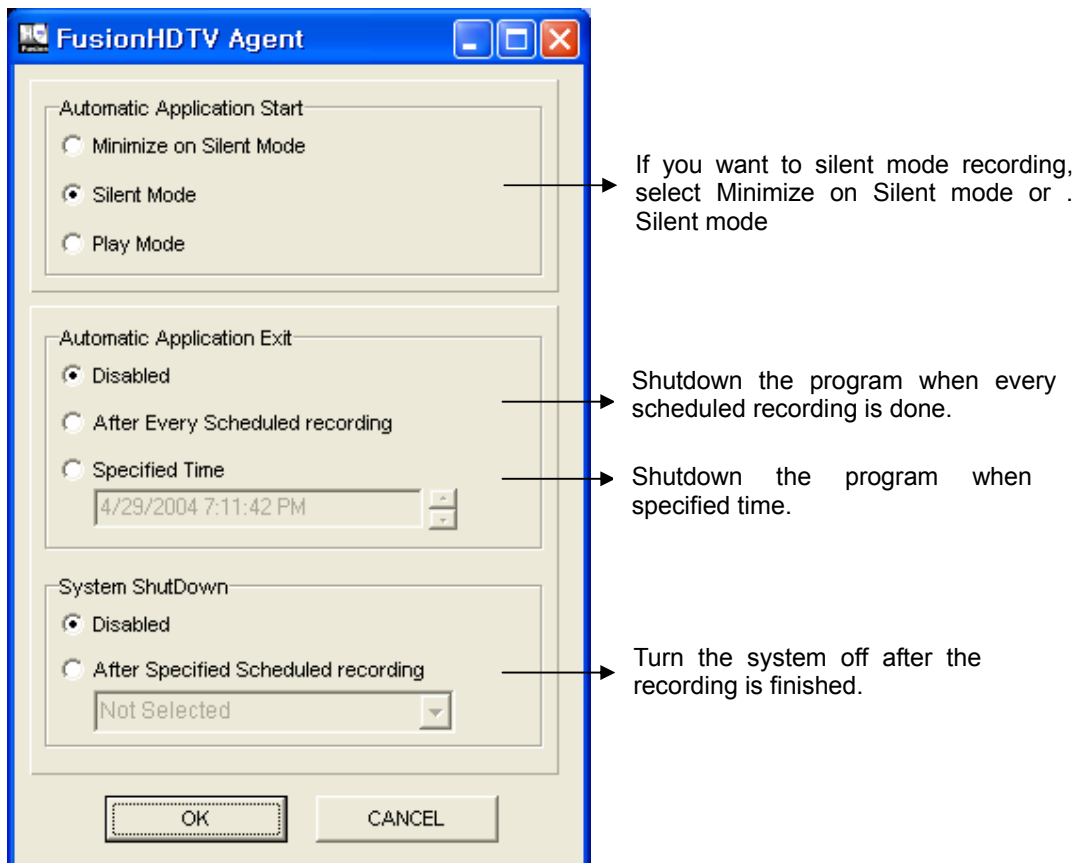
4.7.4 FusionHDTV Agent

This mode is enabled Shutdown the program or Turn the system off after the recording is finished.

- 1) Execute the FusionHDTV program and right click the "Tray" icon. If you do not see the FusionTray icon in the tray, uncheck 'Fusion Tray Auto Run'. Start the program by Start->Program->DVICO->FusionHDTV Agent.



- 2) Select FusionHDTV Agent.

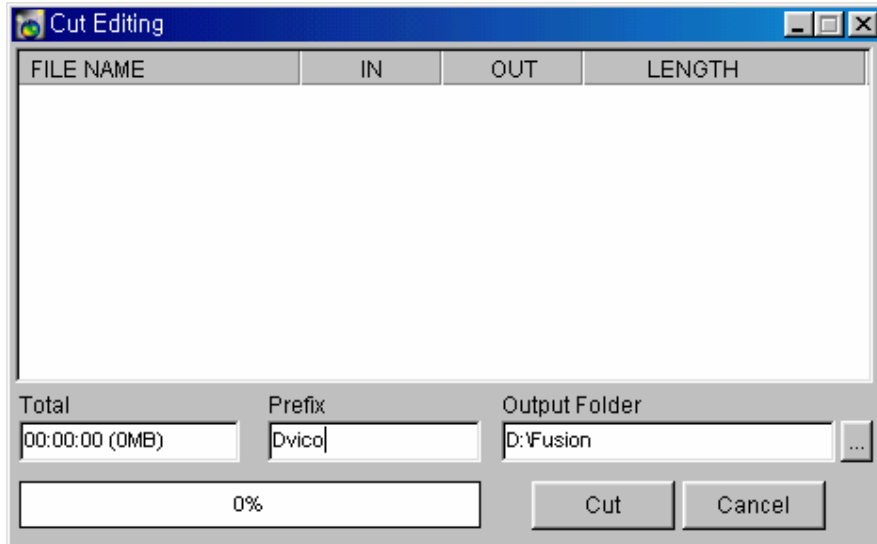


- 3) If you select Schedule View, you can found reservation list.

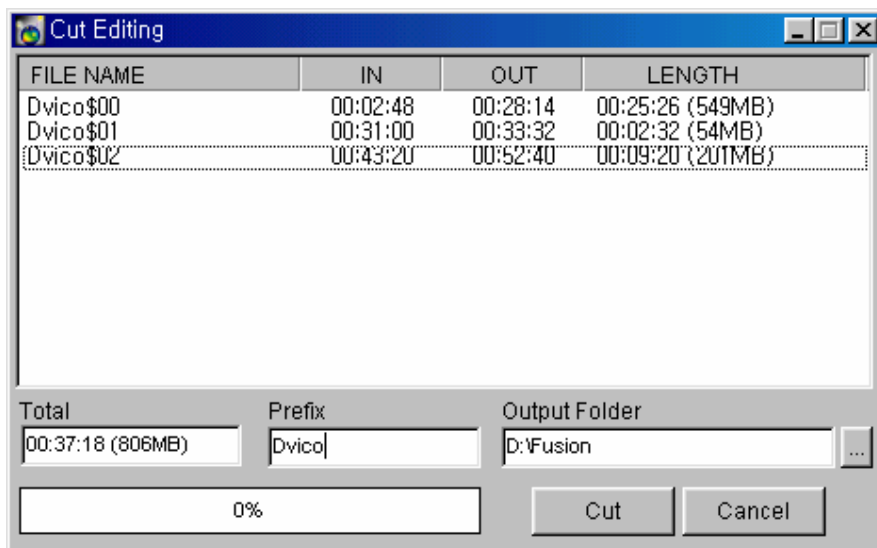
4.8 Cut Editing

You can cut the live recording/broadcast files as well as recorded .tp file with the cut-editing feature of the FusionHDTV.

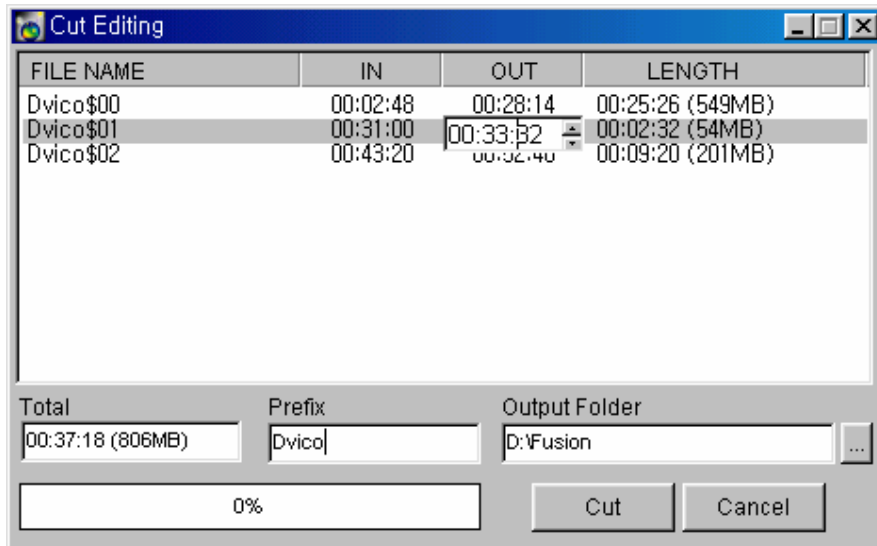
- 1) The cut-editing window will appear if you hit the 'Cut' button. (Mark-in/out button also brings the cut-editing window)



- 2) You can set the prefix name on the 'Prefix' edit-box to generate the prefix of cut-edited file name automatically.
- 3) You can set the output folder by pressing the right-side button of output folder edit-box. The generated cut-edited files will be saved at that folder.
- 4) Hit the 'Mark-In' button to set the start point and 'Mark-out' button to set the end point of clip. You can proceed with multiple clips with this manner.



- 5) To change the file name, just click the file name area. The edit-box will appear and you can type the filename. To change the IN/OUT position, just click the spot you want to change. The edit-box and up/down buttons will appear for you to change the position. To change the hour / minute/ second, click each area you want. Then type the actual position, or hit the up/down arrow button to adjust.



- 6) You can delete unwanted clips by hitting the 'Delete' key on the keyboard.
- 7) After all mark-IN/OUT done, hit the 'Cut' button to start the cutting.

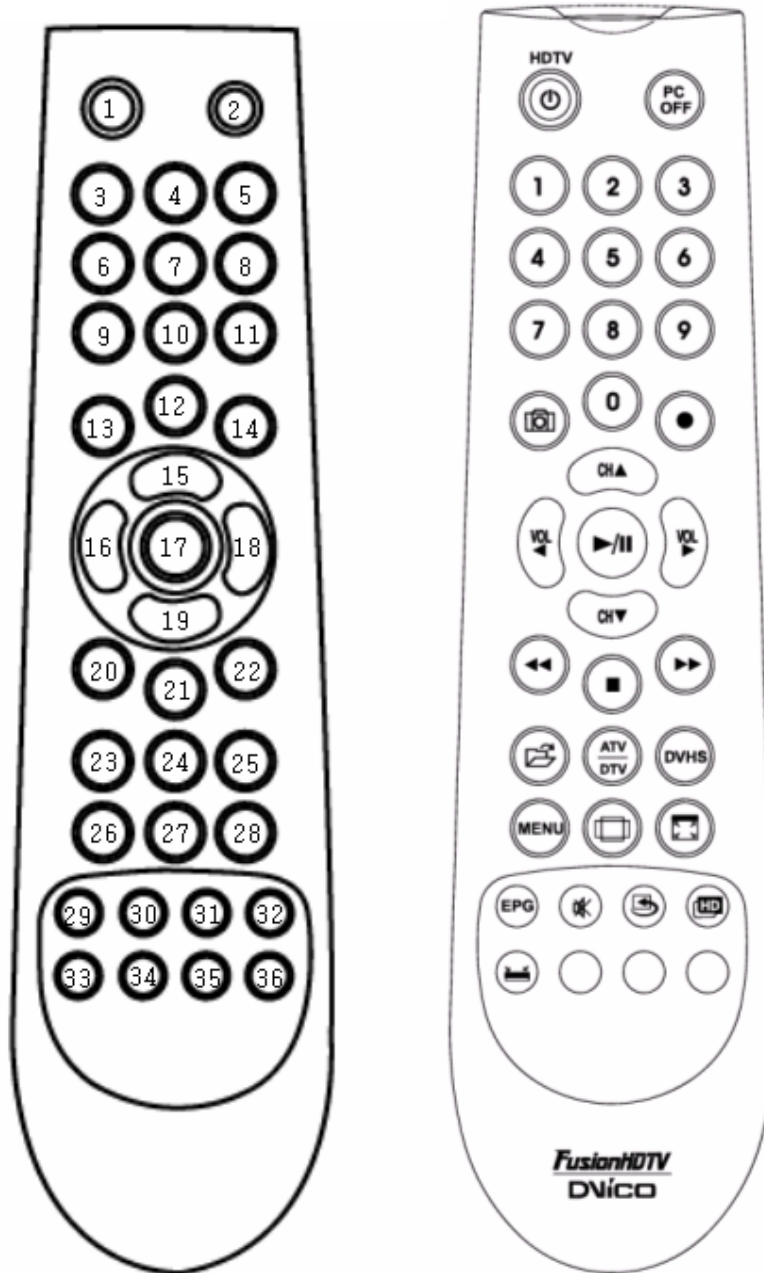
Cut files will be generated like this: 'Prefix + _ + number + .tp' sequence (For example, like Dvico_00.tp, Dvico_01.tp, Dvico_02.tp) in the output folder

4.9 Using FusionRemote

* Optional FusionHDTV remote transceiver.

This indicates Remote Buttons.

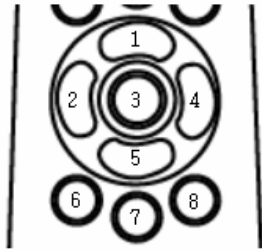
4.9.1 Using For FusionHDTV



- 1) HDTV button: Start or Exit FusionHDTV program.
- 2) PC OFF button

- 3) ~ 12) number button
- 13) Snapshot button: is used for still image capture.
- 14) Record button
- 15) Channel UP button
- 16) Volume DOWN button.
- 17) Play/Pause button: is used to pause playing or replay.
- 18) Volume UP button
- 19) Channel DOWN button.
- 20) Review button: is used to search backward.
- 21) Stop button
- 22) FF button: Is used to search forward.
- 23) Playback button: Is used to play an input signal (or file).
- 24) ATV/DTV button: Changes to live TV mode.
- 25) DVHS button: Connect / Disconnect with DVHS.(Windows XP or above only.)
- 26) Configuration button: show FusionHDTV Configuration.
- 27) Aspect Ratio button: Change Aspect Ratio(16:9<->4:3).
- 28) Fullscreen button: Show Fullscreen.
- 29) EPG button: Show Reservation/Recorded List.
- 30) Mute button
- 31) Windows button: Change Windows.
- 32) FOCUS button: move to FusionHDTV Controller.
- 33) Minimize button
- 34) Input button: repeat S-VHS – VIDEO – CABLE – Tuner
- 35) Back Channel button
- 36) Profile button: You can have different profile for each application programs you want to use with the remote controller.

4.9.2 Using other Windows

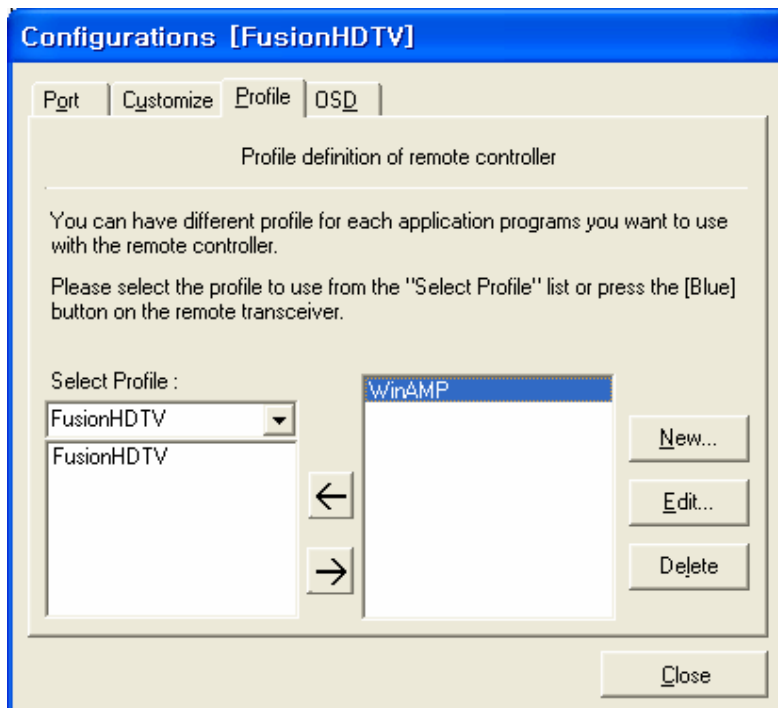


- 1) UP button
- 2) LEFT button
- 3) Enter button
- 4) RIGHT button
- 5) DOWN button
- 6) TAB button
- 7) Shift + TAB button
- 8) ESC button

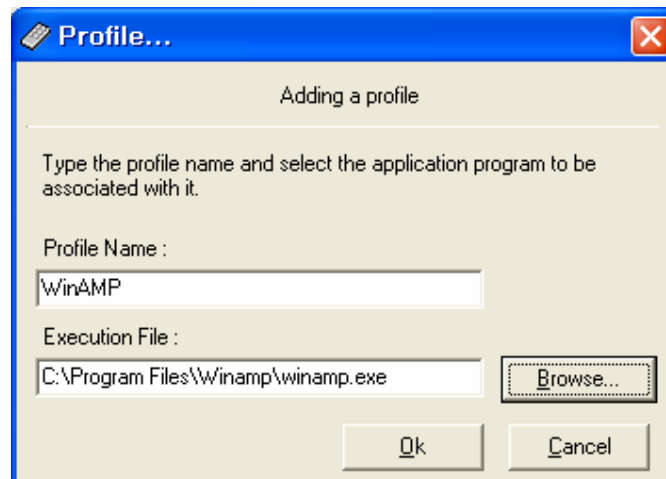
4.9.3 Using Customize mode

When you are not using the FusionHDTV, you can use Fusion Remote as the simple replacement of the keyboard. You can define the key-button mapping of any program you want to use with the FusionRemote. Please refer to the instruction below..

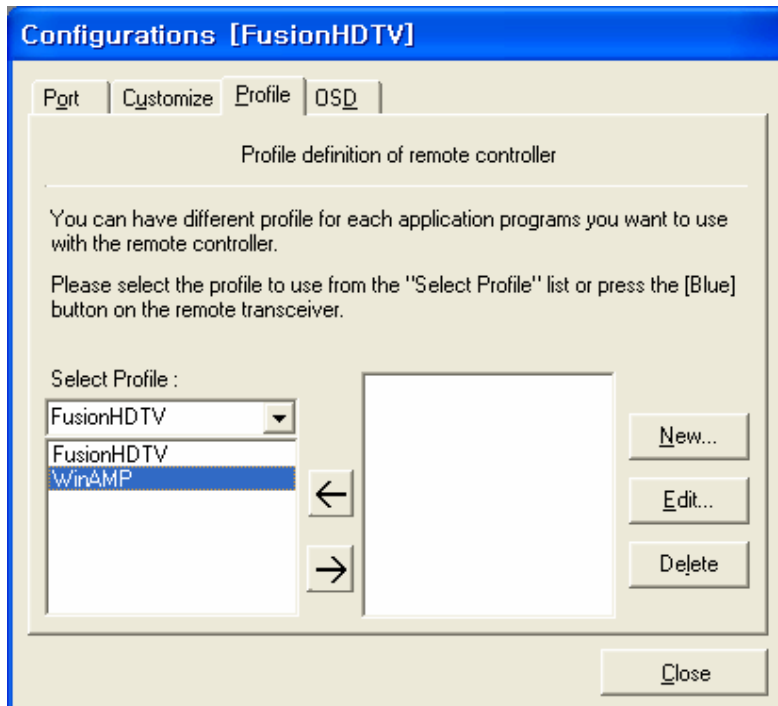
- 1) Create the profile you want to define like the picture below.



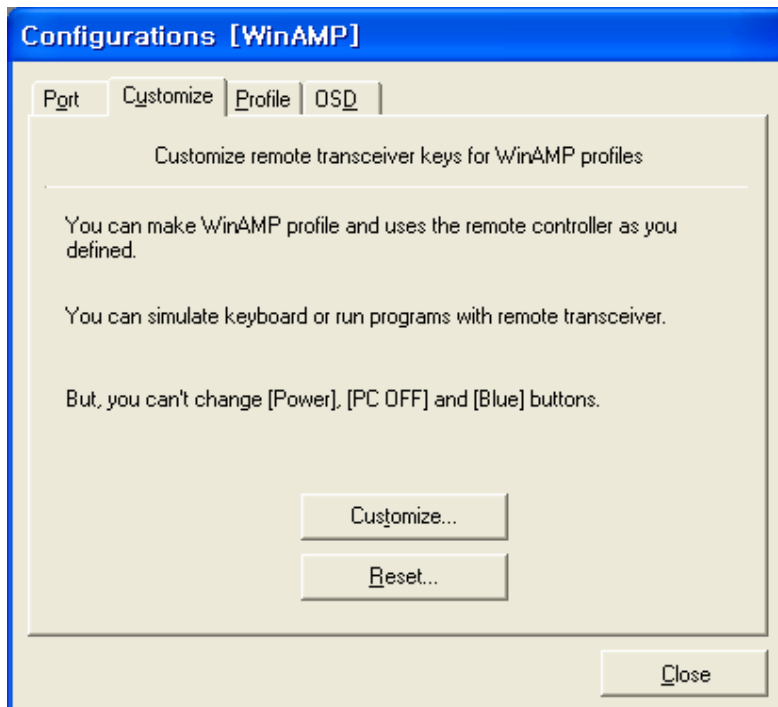
- 2) After pressing the New button input the profile name and the execution path of the program. The program will be started by pressing the red start button of the remote transceiver.



- 3) After adding the profile please press the <- button to select the profile for key define.



- 4) Please press the blue button on the remote transceiver for customizing the remote transceiver keys for the program you selected.

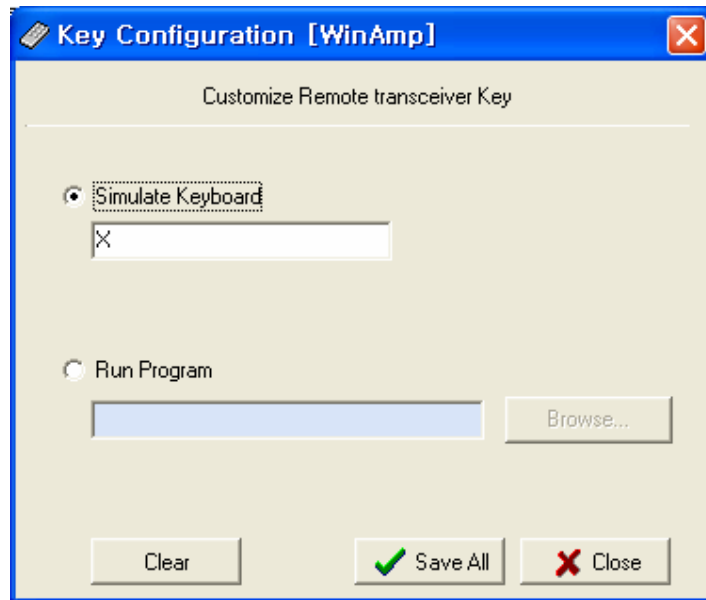


- 5) If you press the Customize... button on the picture above you will see the remote transceiver pop up.

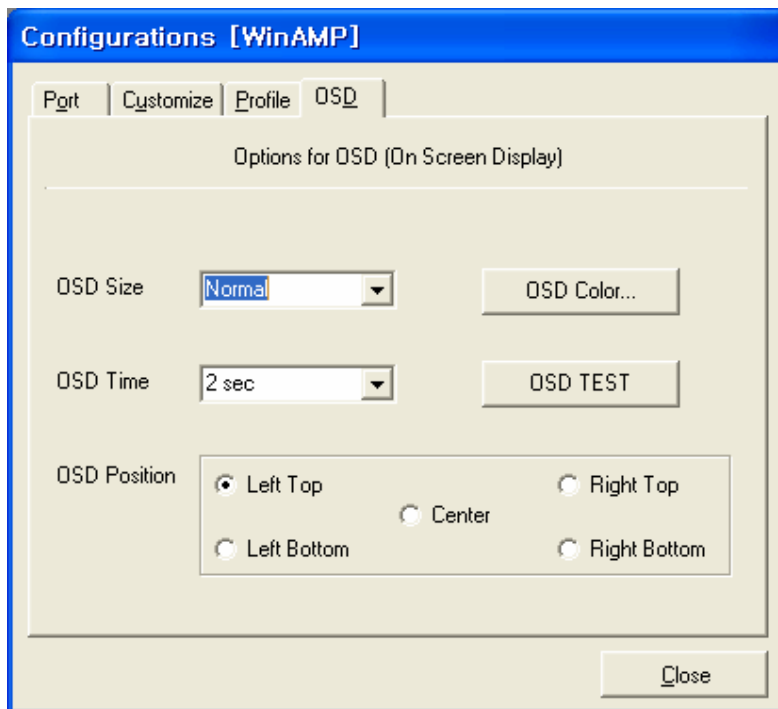


- 6) Please press button on the remote transceiver and input the keys or short cut keys you want to map to the button.

Press SaveAll button when you are done



- 7) Clear button clears the button defined.
- 8) You can set the OSD setting in accordance to each profile like the picture below.



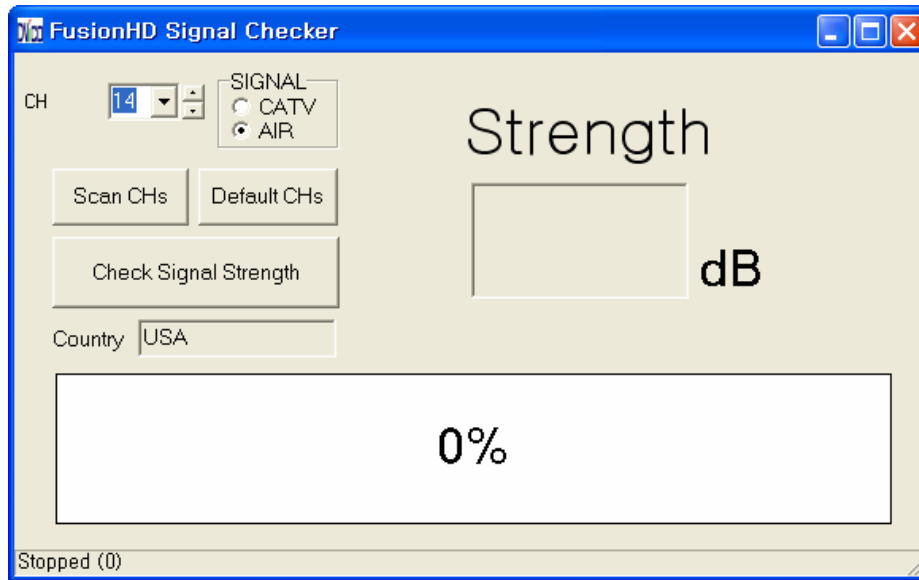
4.10 Using Signal Checker

You can check the strength of the TV signal using the Signal Checker program

Please do not execute Fusion Program and signal checker at the same time.

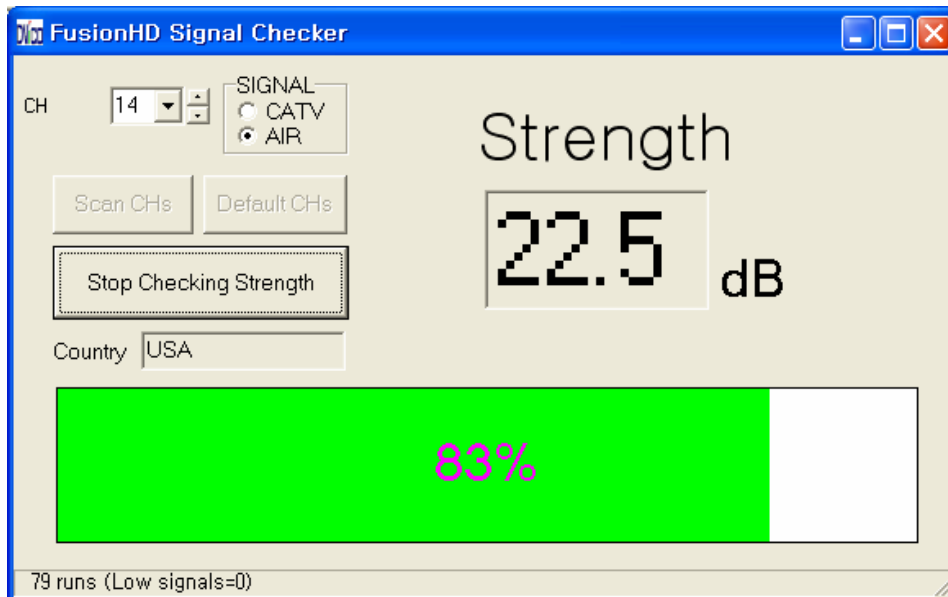
They only work one at a time.

- 1) Start – Program– Dvico – FusionHDTV – Signal Checker



- 2) Press Scan CHs (Scan Channels) button to search the channel.

80% or more signal strength is recommended

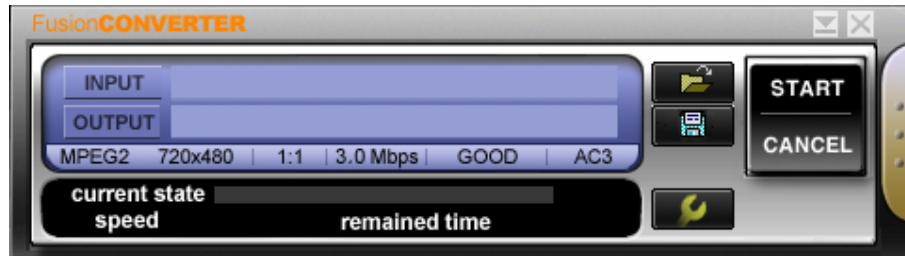


- 3) You can change the channel number of your preference to check the strength.

4.11 Using FusionConverter

You can Convert Tp files to MPEG2,DVD or DivX Files. FusionConverter works in 1080i, 576p, 576i

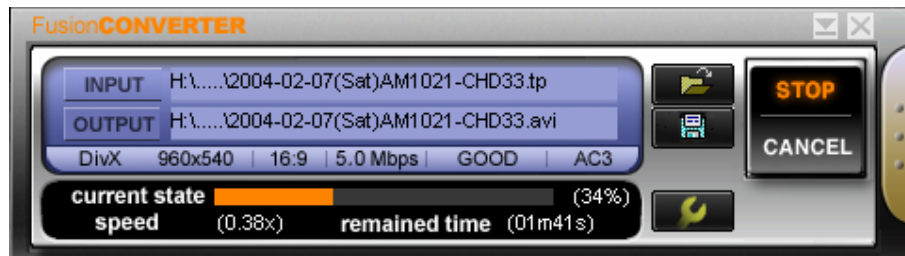
1. Start->Program->DVICO->FusionConverter



2. Use file open button to select Tp file to convert. Use file save button to locate the converted file to be saved. You can select the single sub-channel.




3. Press "Start" button to initiate the conversion. If you press stop button, conversion will stop and converted file up to the point will be saved. If you want to cancel converting, click on the "Cancel" button.



4. Converting OK Dialog appears when done.



5. Pressing  will pop up option windows. You can change size, aspect ratio, bit rate, smoothness and interlace option.

- **PC OFF** : Is used to turn the system off after the converting is finished.
- **Cature Native MPEG** : You can convert Tp stream to mpeg format with maintaining Video, Resolution, Audio information.
- Use “progressive” option when you watch the converted motion file on PC monitor only.
- Use “interlace” option if you watch converted motion file on a TV or on both TV and a PC.
- Use “MP2” Audio format option if you burn the DVD authoring tool.(Ex. Ulead Videostudio 7 SE DVD)

OPTION PC OFF

Capture Native MPEG

Video Format
 MPEG2 DVD DivX

Quality
 Normal Good Best

Encode Mode
 Interlaced Progressive

TV Standard
 NTSC PAL

Size 720 x 480

Aspect Ratio 1 : 1

Bitrate 4.0 Mbps

Audio Format
 AC3 MP2

Bitrate 128 kbps

4.12 FusionHDTV ShortKey

Short Key	Explanation
F1	HELP
A+Numeric	Analog Channel
D+Numeric	Digital Channel
ALT+F4	Exit.
ALT+W	Show WallPaper
Page Up	Fast Foward (FF)
Page Down	Rewind (REW)
Backspace	Instant Replay.
ALT+Enter	Fullscreen.
CTRL+Space	Mute.
CTRL+B	Repeat all Aspect ratio
CTRL+C	16:9,4:3,4:3 Pan & Scan toggle
CTRL+D	DVHS Mode
CTRL+E	TV guide.
CTRL+F	File open.
CTRL+H	Edit favorite channel list .
CTRL+I	Snapshot .
CTRL+L	LIVE TV.
CTRL+M	Configuration.
CTRL+O	Go before Channel
CTRL+P	Input Source
CTRL+R	Manual record.
CTRL+S	Stop.
CTRL+T	Always on TopTV.
CTRL+F6	Hide Controller..
UP	Channel UP.
DOWN	Channel DOWN.
RIGHT	Volume UP..
LEFT	Volume DOWN.
SPACE	File : Pause <-> Play / Live : Play