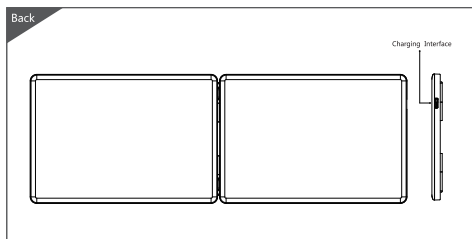
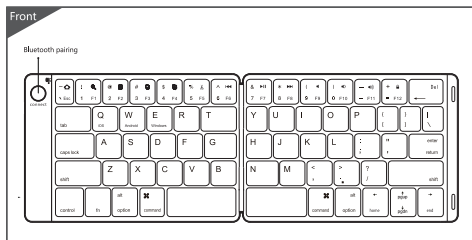


B047

Bluetooth Keyboard

User' s Manual

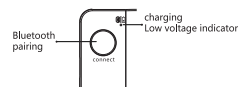


Compatible System

Win /IOS /Android

Note: Please read the user manual carefully before you start using this product

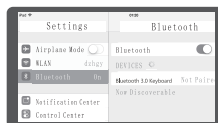
Bluetooth pairing connection



1. Turn on the device, the blue light shinning one time, then press Button of Connect with 3 seconds, the blue light Twinkle, so that means the keyboard in the matching status , after maching succeed, the twinkle blue light off, fold close the keyboard, the Power off.



2.Open the tablet PC setting "Bluetooth" into searching and pairing state.



3.You will find the "Bluetooth 3.0 keyboard " and click to the next step, the device will connects automatically .



4.There have a tip for connecting successfully ,you can use your keyboard comfortably .

Remarks : After connecting successfully the next time you don't need match code, just open the Bluetooth keyboard power switch and the tablet PC "Bluetooth." The BT keyboard will search the device and automatic connects.

Product features

IOS/Android		Windows		Windows	
Fn+	Corresponding function	Fn+Shift	Corresponding function	Fn+	Corresponding function
~ Esc	Return to Desk	~ Esc	Home	~ Esc	Esc
! F1	Search	! F1	Search	! F1	F1
@ F2	Select	@ F2	Select	@ F2	F2
# F3	Copy	# F3	Copy	# F3	F3
\$ F4	Stick	\$ F4	Stick	\$ F4	F4
% F5	Cut	% F5	Cut	% F5	F5
^ F6	Pre-Track	^ F6	Pre-Track	^ F6	F6
& F7	Play/Pause	& F7	Play/Pause	& F7	F7
* F8	Next	* F8	Next	* F8	F8
(F9	Mute	(F9	Mute	(F9	F9
) F10	Volume-) F10	Volume-) F10	F10
- F11	Volume+	- F11	Volume+	- F11	F11
+ F12	Lock	+ F12	Lock	+ F12	F12

Technical Specifications

Keyboard size : 291X100X7mm(Open)	Use key the working current : <1.5mA
Weight : 141g	Standby current : <0.5mA
Working distance : 8m~10m	Sleep current : <100µA
Lithium battery capacity : 90mAh	Sleep time : Ten minutes
Working voltage : 3.3~4.2V	Awaken way : Arbitrarily key to awaken

Status Display LED

- Connect :Turn on the device, the blue light shinning one time, then press Button of Connect with 3 seconds, the blue light Twinkle, so that means the keyboard in the matching status , after maching succeed, the twinkle blue light off.
- Charging : Indicator light will be on green, after fully charging, the light crush out.
- Low Voltage Indication : When the voltage is below 3.3 V, blue light twinkles.

Remarks: In order to prolong the life span of the battery, when you do not use the keyboard for a long time, please switch off the power.

Troubleshooting

Please contact the after-sales service.

Copyright

It is forbidden to reproduce any part of this quick start guide without the permission of seller.

Safety instructions

Do not open or repair this device, Do not use the device in a damp environment. Clean the device with a dry cloth.

Warranty

The device is provided with one-year limited hardware warranty from the purchase day.

Keyboard Maintenance

- 1.Please keep the keyboard away from liquid or humid environment, saunas, swimming pool, steam room and don't let the keyboard get wet in the rain.
- 2.Please don't expose the keyboard at too high or too low temperature condition.
- 3.Please don't put keyboard under sun for a long time.
- 4.Please don't put keyboard close to the flame, such as cooking stoves, candles or fireplace.
5. Avoid sharp objects scratching products, timely to recharge products to ensure the normal use.

FAQ

- 1.The tablet PC can't connect the BT keyboard ?
- 1) At first check the BT keyboard is into match code state, then open the table PC Bluetooth searching.

- 2) Checking the BT keyboard Battery is enough, the battery low is also lead to can't connect, you need charge.
- 2.The keyboard indication light always flashing when use?
Keyboard indication always flashing when use, is means the battery will be no power , please charge the power as soon as possible.
- 3.The table PC display BT keyboard is disconnect?
The BT keyboard will into dormant to save the battery after some time later no use; press any key the BT keyboard will be awoken and working.

FCC Statement

Changes or modifications not expressly approved by the party responsible for compliance could void the user's authority to operate the equipment.
This equipment has been tested and found to comply with the limits for a Class B digital device, pursuant to Part 15 of the FCC Rules. These limits are designed to provide reasonable protection against harmful interference in a residential installation. This equipment generates uses and can radiate radio frequency energy and, if not installed and used in accordance with the instructions, may cause harmful interference to radio communications. However, there is no guarantee that interference will not occur in a particular installation. If this equipment does cause harmful interference to radio or television reception, which can be determined by turning the equipment off and on, the user is encouraged to try to correct the interference by one or more of the following measures:
-- Reorient or relocate the receiving antenna.
-- Increase the separation between the equipment and receiver.
-- Connect the equipment into an outlet on a circuit different from that to which the receiver is connected.
-- Consult the dealer or an experienced radio/TV technician for help
This device complies with part 15 of the FCC rules. Operation is subject to the following two conditions (1)this device may not cause harmful interference, and (2) this device must accept any interference received, including interference that may cause undesired operation.

Warranty Card

User information

Company or personage full name

Contact address _____

TEL _____ Zip _____

The purchased product name and model NO.

Purchased date _____

This reason due to the product broken and damage is not include on the warranty.

- (1) Accident, misuse, improper operation, or any unauthorized repair, modified or removed
- (2) Improper operation or maintenance, when operation violation of the instructions or connection unsuitability power supply.

