



# Dakota Alert®

## WIRELESS SECURITY EQUIPMENT

Contact Dakota Alert:  
32556 477th Ave.  
Elk Point, SD 57025  
ph: 605.356.2772  
www.DakotaAlert.com

### DCMT-4000 INSTRUCTIONS

#### DCMT-4000

Coding transmitter to the DCR-4000

*Need to have receiver and transmitter together to start this process*

- 1) Remove 4 screws on back of transmitter and install 9 volt battery in DCR-4000.
- 2) Follow **CODING TUNE** instructions in DCR-4000.
- 3) To activate the transmitter, you can either wave your hand over the sensor or press the small white button on the circuit board (Figure 2).

**OPERATION:** The DCMT will detect people or vehicles up to 100' in front of the sensor.

Mount the DCMT on a wall, post or tree about 3-4' off the ground pointing towards the area to be monitored. Note: to avoid false signals, do not point towards busy roads or ponds. LED setting: The LED jumper on the PCB can be set to "ON" so that the LED will light for a second when an object is detected or it can be set to "off" which would never let the LED light up when an object is detected. FILTER setting: The FILTER jumper should be set to "ON" for outdoor use and can be set to "OFF" for indoor use. Note: If more sensitivity is needed, the filter can be set to "OFF". However, this might cause false signals outdoors. RESET setting: The RESET jumper can be changed from 10 seconds to 120 seconds. This is the minimum time between activations. RANGE setting: The RANGE jumper can be set from High (H), Medium (M) and Low (L). The High setting will allow detection up to about 100', the Medium setting will allow detection up to about 50' and the Low setting will allow detection up to about 25'.

#### DCR-4000

Volume is controlled with the VOLUME button, 4 levels and OFF. Press and release the VOLUME button to select desired volume level.

#### CODING TUNE

*Need to have receiver and transmitter together to start this process*

- 1) Push and hold the MODE and VOLUME buttons (Figure 1) for three seconds.
- 2) When all four lights flash, release the buttons.
- 3) Press and toggle the VOLUME button to select desired tune (12 different tunes to choose).
- 4) After you have chosen a tune, activate the transmitter and you will hear a beep from the DCR-4000.
- 5) If you are coding more than one transmitter, repeat steps 3 and 4.
- 6) After the transmitter(s) are coded, press and hold the MODE and VOLUME buttons for one second and release once the four lights flash.
- 7) To test transmitter tune, activate the transmitter and you will hear the selected tune hear through receiver and the lights will flash.

#### ERASING CODING FROM DCR-4000,

- 1) Push and hold the MODE and VOLUME buttons for three seconds, you will see all 4 lights flash, then release.
- 2) Push and hold the MODE and VOLUME buttons for five seconds, the 4 lights will flash, then release.
- 3) All the codes have now been erased. Repeat the **CODING TUNE** section for the various transmitters.

*NOTE: This device complies with Part 15 of the FCC Rules. Operation is subject to the following two conditions: (1) this device may not cause harmful interference, and (2) this device must accept any interference received, including interference that may cause undesired operation. Changes or modifications not expressly approved by the party responsible for compliance could void the user's authority to operate the equipment. This equipment has been tested and found to comply with the limits for a Class B digital device, pursuant to Part 15 of the FCC Rules. These limits are designed to provide reasonable protection against harmful interference in a residential installation. This equipment generates, uses and can radiate radio frequency energy and, if not installed and used in accordance with the instructions, may cause harmful interference to radio communications. However, there is no guarantee that interference will not occur in a particular installation. If this equipment does cause harmful interference to radio or television reception, which can be determined by turning the equipment off and on, the user is encouraged to try to correct the interference by one or more of the following measures:*

- Reorient or relocate the receiving antenna.
- Increase the separation between the equipment and receiver.
- Connect the equipment into an outlet on a circuit different from that to which the receiver is connected.
- Consult the dealer or an experienced radio/TV technician for help.

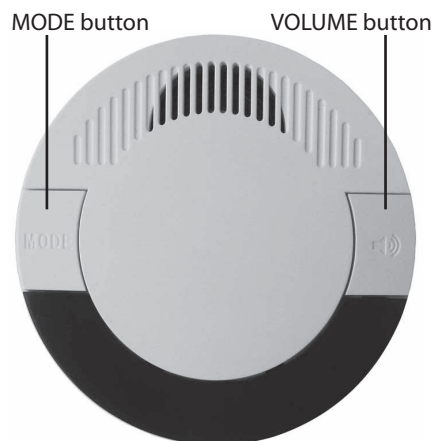


Figure 1

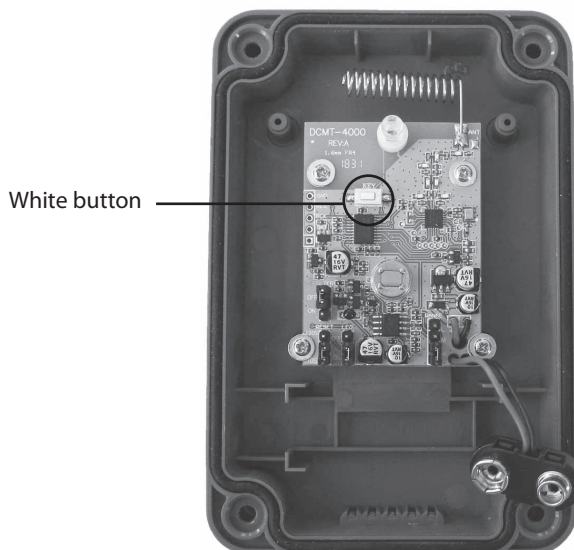


Figure 2