

Alarm

Wireless Home Security

User's Manual



Say hello to Alarm.



Alarm Base Station

The central hub of your Alarm system. Connects all of your Alarm devices to the Smart Life app, so you'll always stay in control of your home, wherever you are.

Connects to power with the included power supply.

Contact Sensor

Alerts you when a door or window is opened.

Uses the Sensor magnet and mounting hardware included with the Contact Sensor Install Kit.



Key Fob

Gives you hands-on control of your Alarm system.

Press the buttons to set the Alarm in 3 different Security Modes.

1. Set up your Smart Life account.

1. First, download the Smart Life app for your iOS or Android device.

- Before setting up your Alarm, make sure you have the latest version of the Smart Life app from the app store.



2. Next, create your account.

- If you're new to Smart Life, tap **Sign up** to create account. Enter your mobile phone or email address, then tap **Get Verification Code**, enter the code you receive in your mobile phone or email to set up the password.
- If you already have a Smart Life account used for other devices, tap **Log in with Existing Account**.

2. Set up your Alarm Base Station.

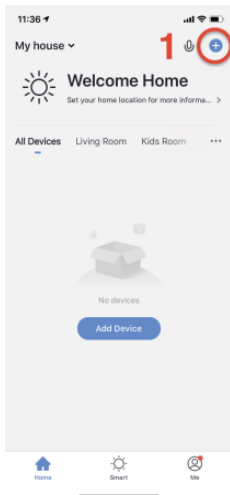
The **Base Station** is the brains and primary siren of your system. It communicates with all of your devices and sends us your alarm signals if you have activated alarm monitoring service.

- Place your **Base Station** in a central location in your house. **DO NOT** install it on the floor.
- Plug the **Base Station** into a power outlet using the included power cord.

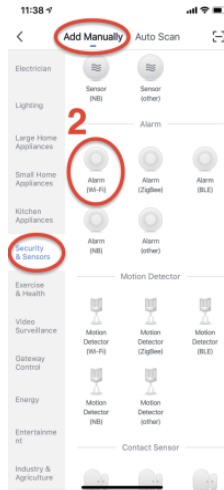


3. Add Base Station to Smart Life app.

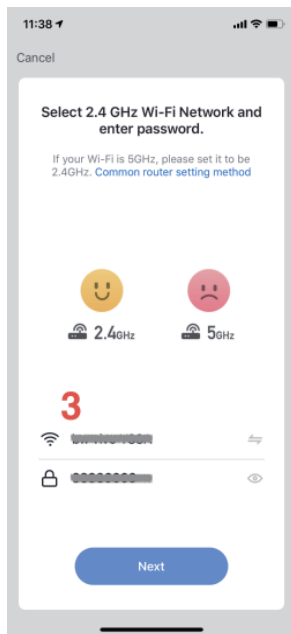
1. Launch the app and tap the Plus (+) in the top right corner to add a Base Station device.



2. Select **Add Manually**, **Security & Sensors**, then **Alarm (Wi-Fi)**.



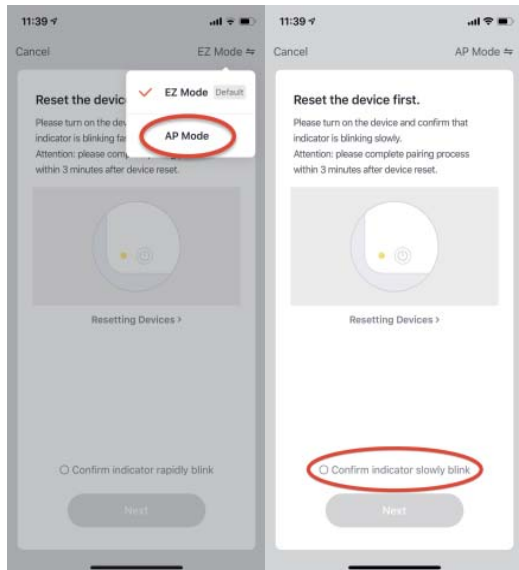
3. Choose your Wi-Fi network and Enter the password. Then tab **Next**.



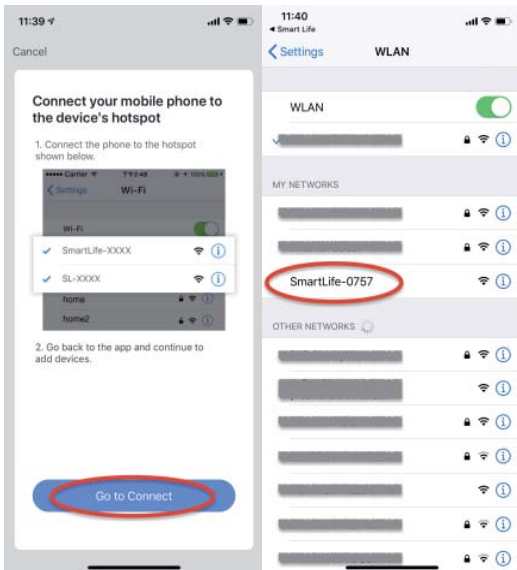
4. Press and hold the **SET** button on the Base Station (after beep sound), the light of Base Station is **SLOWLY blinking (2s/time)**.



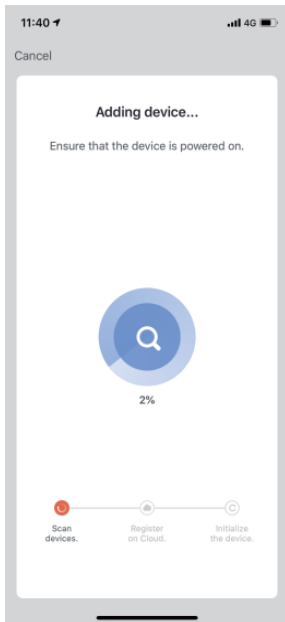
5. Choose **AP Mode** and Select **Confirm indicator slowly blink**.



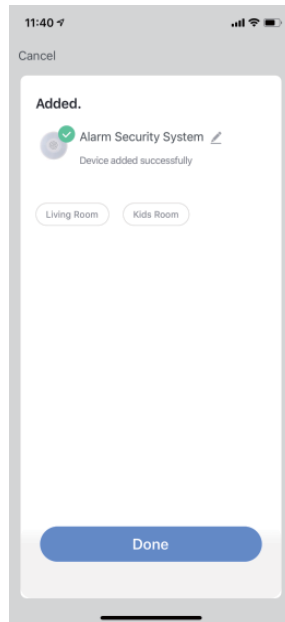
6. Tap **Go to Connect**, select **WLAN** on your mobile phone setting, choose **SmartLife-XXXX** network on the WLAN setting.



7. Switch back to Smart Life app, it will show **Adding device** on the Smart Life App.



8. Now your **Base Station** is successfully added to Smart Life app. Tab **Done**.



4. Set up your Sensors and Remote Device.

Setting up your Alarm security devices involves two steps:

1

Connect

the device to your
Alarm System.

2

Configure

any unique settings
as needed.

For the easiest setup, complete two steps for each device before moving on to the next one. Using the app and this guide, we'll help you position your Alarm to improve the security of your home.

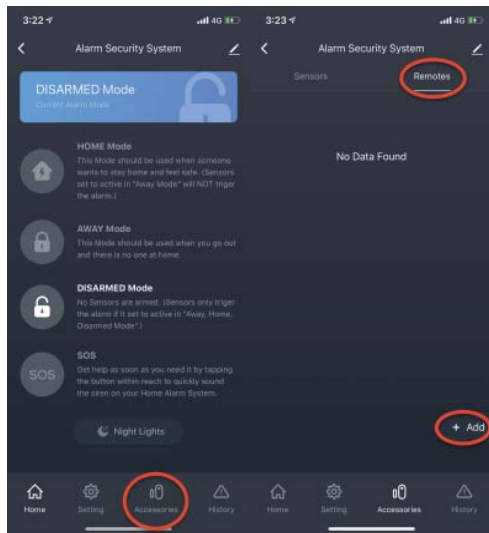


Don't pull out all of the tabs at once! It can make setting up your Alarm a lot more complicated. Wait until you're ready to set up a certain device, then only pull its tab when the app prompts you.

Key Fob

1. Connect

To connect a Key Fob, tap **Accessories** at the bottom to set up the key fob.



Tap **Remotes**, then tap **+ Add**, then there will be followed by a beeping sound from the Base Station.

Now you need to press one of the remote button.

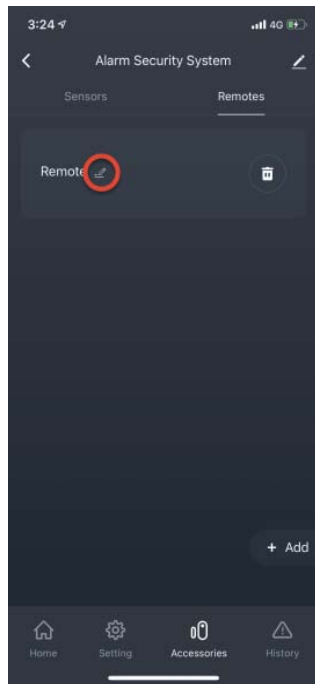


Key Fob

2. Configure

Using the app, choose the key fob, give it a unique name describing the key fob.

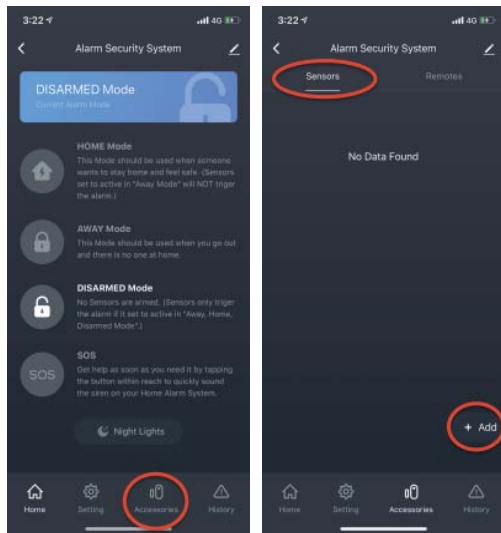
Tap **Remotes**, then tap **pen icon** to edit the device name.



Contact Sensor

1. Connect

To connect a Contact Sensor, pull the tab out of the back. Tap **Accessories** at the bottom to set up the contact sensor.



Now line up the Contact Sensor (sensor and magnet) together (Fig.1).

Tap **Sensors**, then tap **+ Add**, then there will be followed by a beeping sound from the Base Station. Now you need to separate the Contact Sensor (Fig.2).



Fig. 1

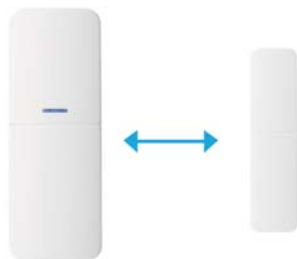


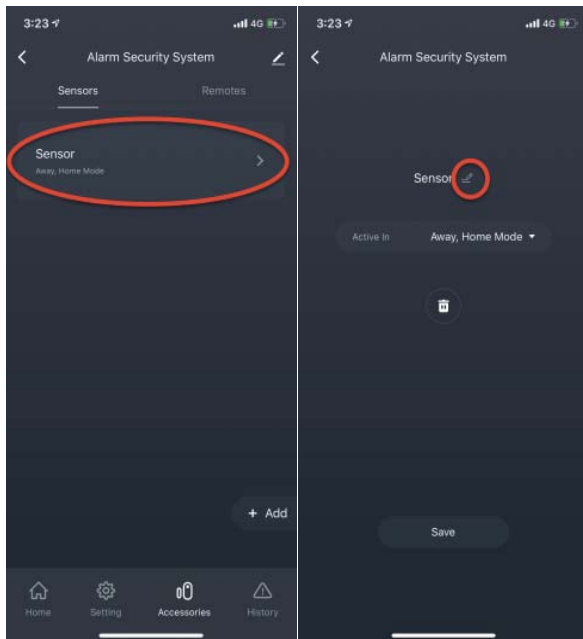
Fig. 2

Contact Sensor

2. Configure

Using the app, choose the Sensor placement (Door or Window), give it a unique name describing the location, and assign it to a room.

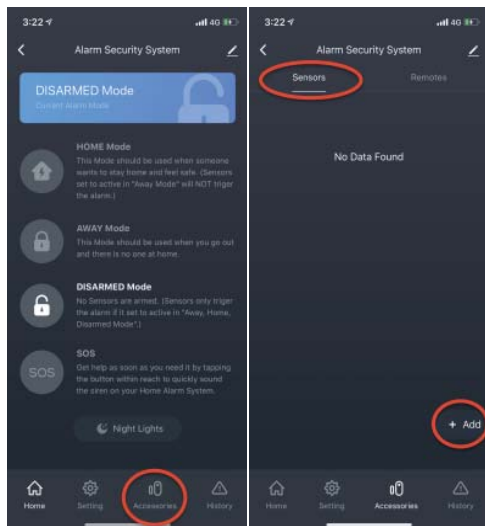
Tap **Sensor**, then tap **pen icon** to edit the device name.



Motion Sensor

1. Connect

To connect a Motion Sensor, tap **Accessories** at the bottom to set up the motion sensor.



Now turn on the **Motion Sensor** (ON/OFF button on the back).

Tap **Sensors**, then tap **+ Add**, then there will be followed by a beeping sound from the Base Station. Now you need to wave your hand in front of the Motion Sensor.

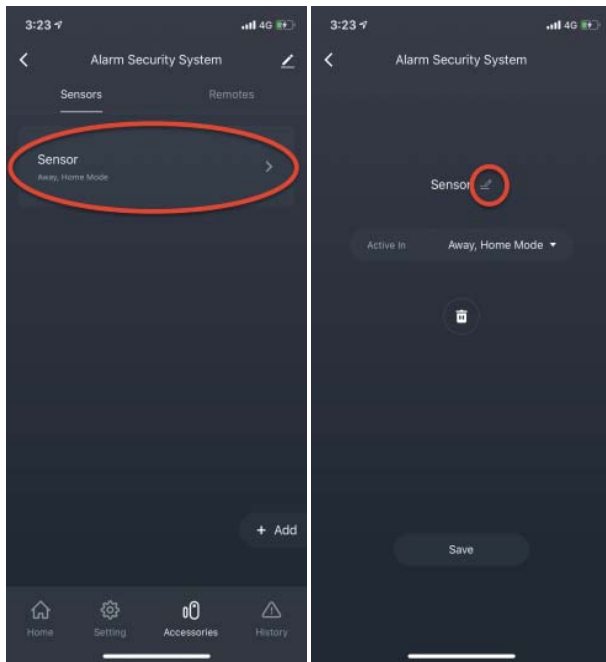


Motion Sensor

2. Configure

Using the app, choose the Sensor placement, give it a unique name describing the location, and assign it to a room.

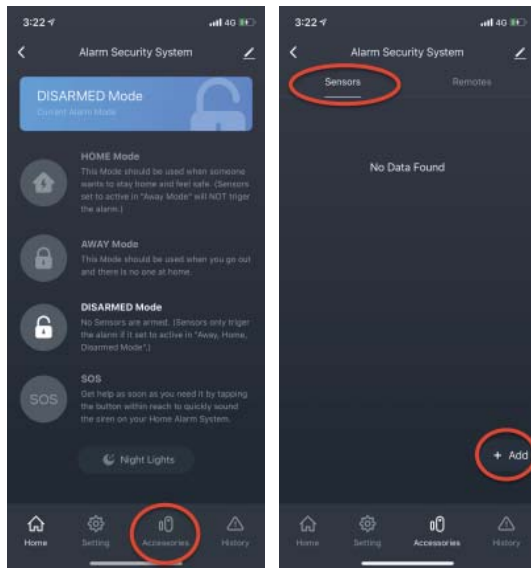
Tap **Sensor**, then tap **pen icon** to edit the device name.



Doorbell

1. Connect

To connect a Doorbell, tap **Accessories** at the bottom to set up the doorbell.



Tap **Sensors**, then tap **+ Add**, then there will be followed by a beeping sound from the Base Station. Now press the Doorbell button.

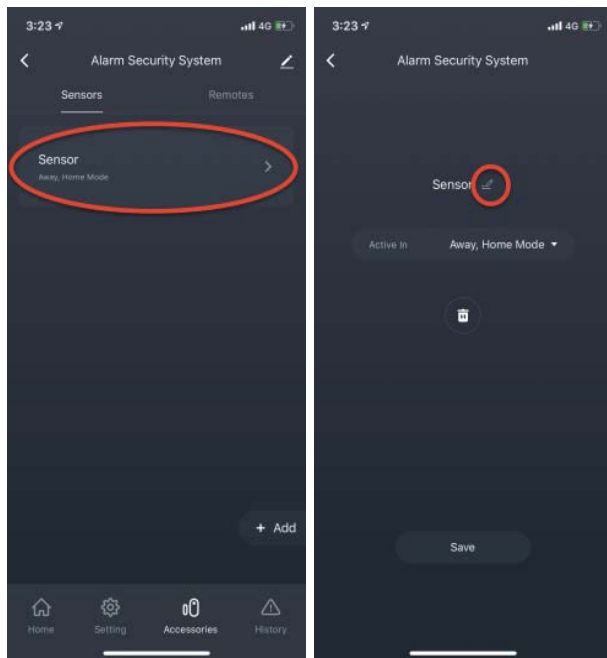


Doorbell

2. Configure

Using the app, choose the Sensor, give it a unique name describing the doorbell.

Tap **Sensor**, then tap **pen icon** to edit the device name.



* Security Mode of Sensors

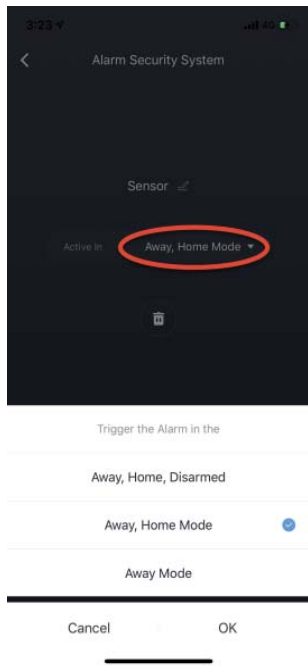
Choosing which Sensors are monitored in each mode.

Each Security Mode monitors specific groups of Sensors.

By default, **Away Mode** and **Home Mode** arms only Contact Sensors used on doors and windows.

You can customize which Sensors are armed in **Away Mode**. For example, if you want to avoid arming a specific door while in Home Mode, you can adjust this using Mode Settings (choose the Alarm in the **Away Mode**).

****Sensors set to **Away, Home, Disarmed Mode** will trigger the alarm even your alarm system is set to **Disarmed mode**.**



5. Learn to use Alarm System.

Alarm Modes

Your Alarm system has three Security Modes to choose from: **Disarmed**, **Away**, and **Home**. You can switch between them using the Key Fob and the Smart Life app.



Away Modes

When you arm in Away Mode, by default all Sensors are armed. This Mode should be used when you go out and there's no one at home.

Home Modes

When you arm in Home Mode, only door and window Sensors are armed by default. This Mode should be used when someone wants to stay home and feel safe.

Disarmed Modes

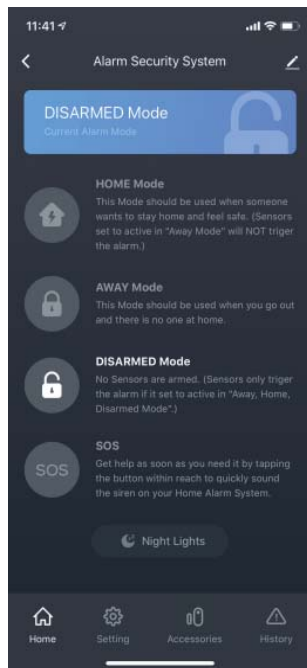
No Sensors inside your home are armed. This is useful when you're at home and want the freedom to go in and out easily.

How to Arm and Disarm your Alarm

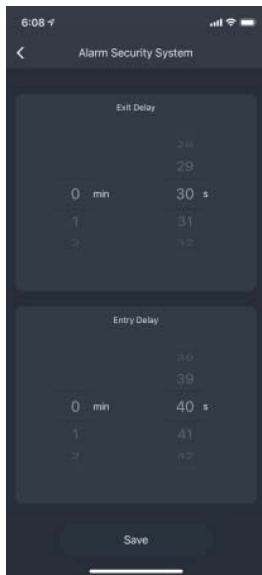
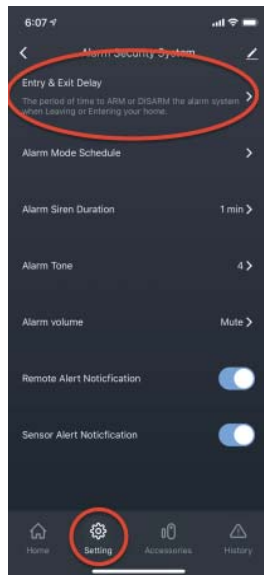
Using the **Key Fob**, simply press the Disarmed, Away, or Home Mode button. Using the **Smart Life app**, simply tap the Mode of your choice.

● Disarming will cancel your alarm signal.

If you're professionally monitored, disarming the system during an alarm cancels the alarm signal sent to the monitoring center. In an emergency, allow the alarm to continue without disarming until you're sure response is not needed.



Understanding Entry & Exit Delay



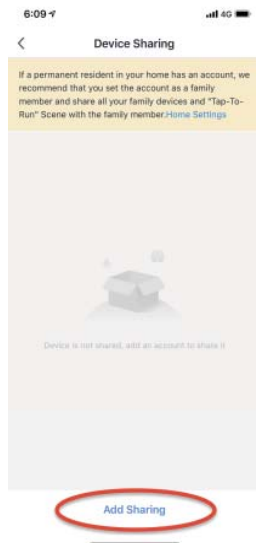
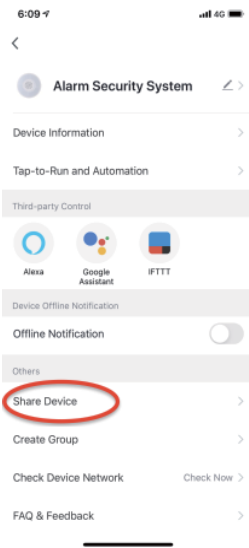
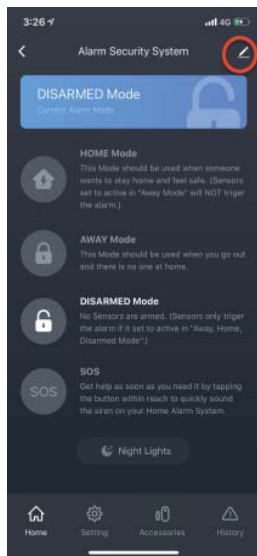
Exit Delay gives you a short period of time to leave your home once you've armed the Alarm. You'll hear a beeping sound to remind you that there is only a few seconds to exit your home and close the door. When your Exit Delay ends, your Alarm is in Armed Mode.

Entry Delay gives you a short time to disarm your Alarm when entering your home. Opening your door will trigger the Entry Delay to begin counting down. You'll hear beeping sound during the delay, and when the delay ends, if you don't disarm, your Alarm siren will sound.

* Customize each delay for any time between 0 seconds (no delay) and 540 seconds (9 minutes). Just make sure you have enough time to arm and disarm your Alarm.

Adding Shared Family Users

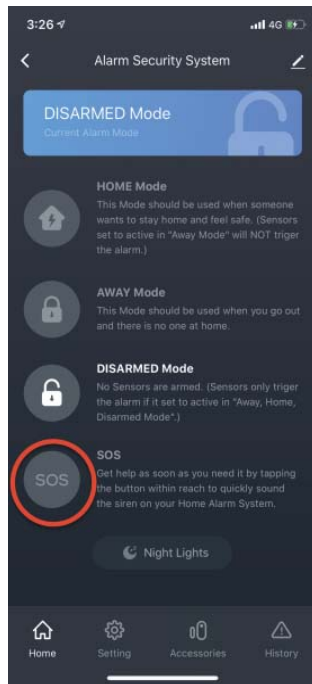
Tap **pen icon**, tap **Share Device**, then tap **Add Sharing** to enter sharing user's Smart Life account name.
(Sharing users should sign up for a Smart Life account in advance.)



How to trigger SOS alarm

Alarm features a SOS Alarm just in case an emergency occurs while you're at home.

To trigger it, press the **lightning button** on the Key Fob, or tap **SOS** in the Smart Life app.

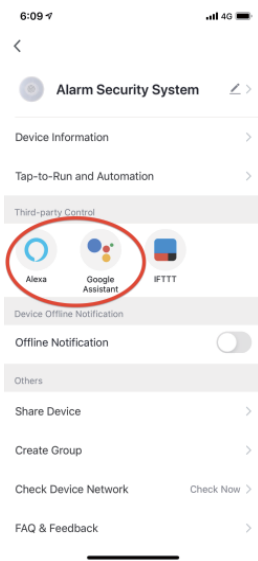
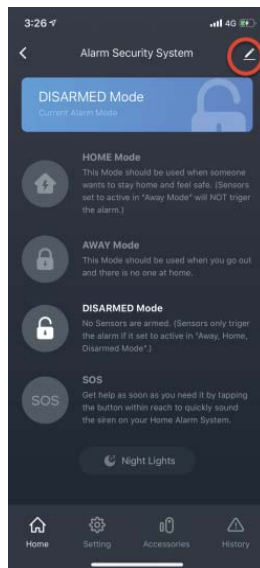


6. Work with Alexa, and Google Home.

Voice Control

Connect Alarm System to select Alexa, or Google Home devices to easily set your Alarm in **Home**, **Away**, and **Disarmed Modes** and check the status of your security system with hands-free voice control.

- Tap **pen icon**, then tap **Alexa** or **Google Assistant** to connect.



Alexa Voice Commands

You can start controlling the Smart Alarm System with amazon Alexa using voice command. Such as:

- "Alexa, arm {Alarm Security System} in away mode"
- "Alexa, arm {Alarm Security System} in home mode"
- "Alexa, disarm {Alarm Security System} "
- "Alexa, what's your voice code for my {Alarm Security System} ;
Voice code 1234"
- "Armed" or "Disarmed"

** {Alarm Security System} is the default name of your alarm system.*

Google Home Voice Commands

You can start controlling the Smart Alarm System with Google Home device using voice command. Such as:

- "Set the {Alarm Security System} to away mode."
- "Set the {Alarm Security System} to home mode."
- "Disarm {Alarm Security System} "

** {Alarm Security System} is the default name of your alarm system.*

FCC Statement

This device complies with part 15 of the FCC rules. Operation is subject to the following two conditions: (1) this device may not cause harmful interference, and (2) this device must accept any interference received, including interference that may cause undesired operation.

Caution: Changes or modifications not expressly approved by the party responsible for compliance could void the user's authority to operate the equipment.

NOTE: This equipment has been tested and found to comply with the limits for a Class B digital device, pursuant to part 15 of the FCC Rules. These limits are designed to provide reasonable protection against harmful interference in a residential installation. This equipment generates uses and can radiate radio frequency energy and, if not installed and used in accordance with the instructions, may cause harmful interference to radio communications. However, there is no guarantee that interference will not occur in a particular installation. If this equipment does cause harmful interference to radio or television reception, which can be determined by turning the equipment off and on, the user is encouraged to try to correct the interference by one or more of the following measures:

- Reorient or relocate the receiving antenna.
- Increase the separation between the equipment and receiver.
- Connect the equipment into an outlet on a circuit different from that to which the receiver is connected.
- Consult the dealer or an experienced radio/TV technician for help important announcement

Radiation Exposure Statement

The device has been evaluated to meet general RF exposure requirement. The device can be used in portable exposure condition without restriction.

Customize your safer home.



Keypad



Key Fob



Doorbell



Motion Detector



Contact Sensor



Alarm Horn Siren



Camera



Water Leak Detector