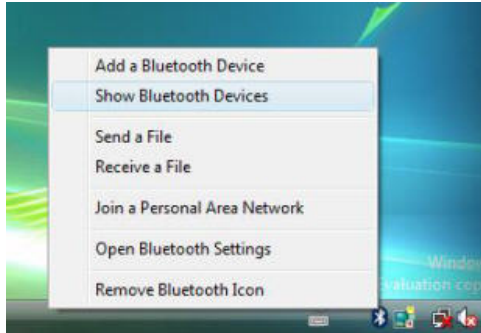




## HP HSTNN-DM18 Bluetooth Laser Mobile Mouse

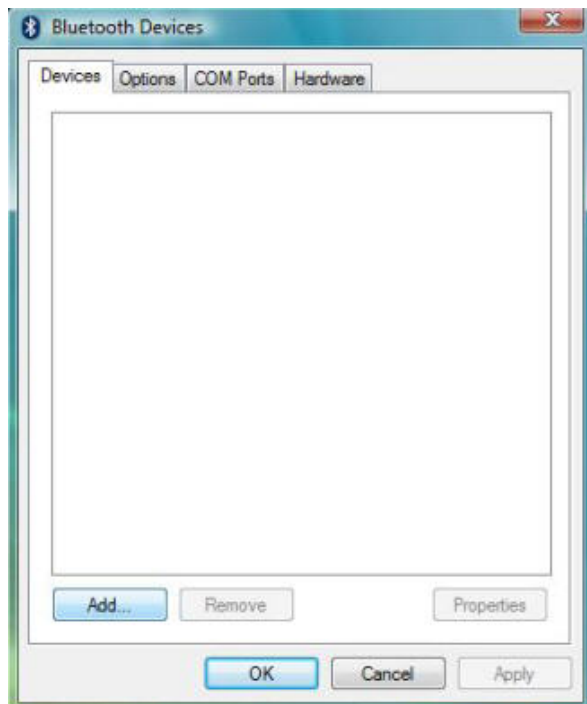
1, A Bluetooth icon should be located on your Windows taskbar. Right click the Bluetooth icon on the taskbar and choose **“Add a Bluetooth Device”**.



2, Turn **ON** the switch on the bottom of the mouse.

3, Push the **RESET** button on the bottom of the mouse.

4, Click **Add** to next step.

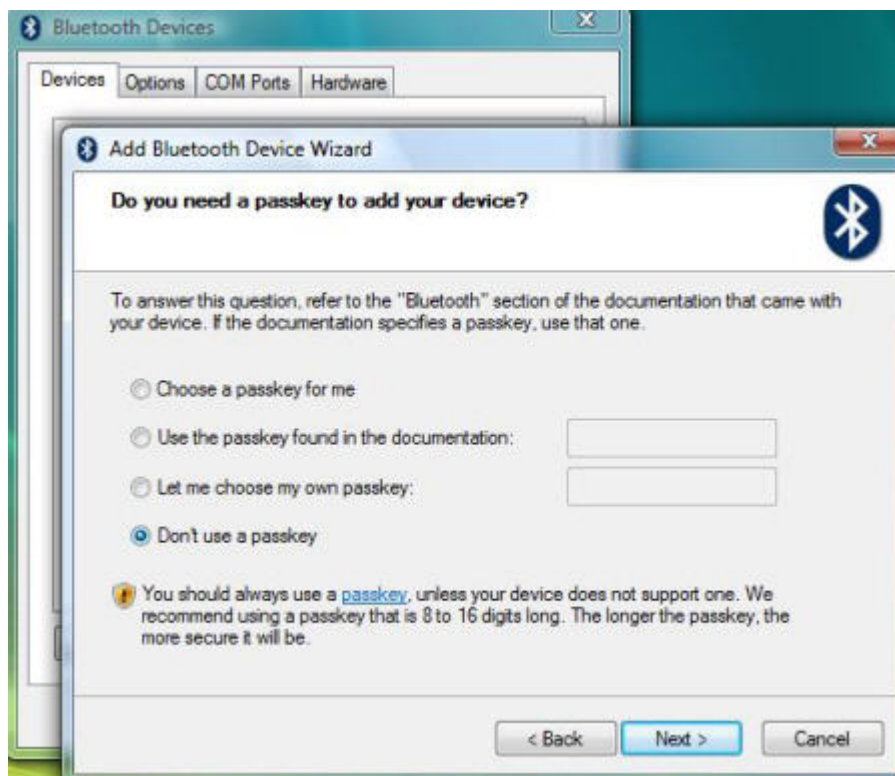


5, Select **“My device is set up and ready to be found”** and then click the **“Next”**.



6, A list of available Bluetooth devices will appear. Select “HP Bluetooth Laser Mobile Mouse” and click “Next”.

7, Select “Don’t use a passkey” and then click the “Next”.



8, Waiting the process of pairing and then click the “**Finish**”.



9, A mouse icon named as HP Bluetooth Laser Mobile Mouse will show and click **OK** to complete the setup.

Note1: RESET may be necessary after changing batteries. And repeat steps above if necessary.

Note2: The steps of setup procedure may be a little bit different in other versions of Windows Operation System.

## **FEDERAL COMMUNICATIONS COMMISSION INTERFERENCE STATEMENT**

This equipment has been tested and found to comply with the limits for a Class B digital device, pursuant to Part 15 of the FCC Rules. These limits are designed to provide reasonable protection against harmful interference in a residential installation. This equipment generates, uses and can radiate radio frequency energy and, if not installed and used in accordance with the instructions, may cause harmful interference to radio communications. However, there is no guarantee that interference will not occur in a particular installation. If this equipment does cause harmful interference to radio or television reception, which can be determined by turning the equipment off and on, the user is encouraged to try to correct the interference by one or more of the following measures:

- Reorient or relocate the receiving antenna.
- Increase the separation between the equipment and receiver.
- Connect the equipment into an outlet on a circuit different from that to which the receiver is connected.
- Consult the dealer or an experienced radio/TV technician for help.

### **CAUTION:**

Any changes or modifications not expressly approved by the party responsible for compliance could void the user's authority to operate the equipment.

This device complies with Part 15 of the FCC Rules. Operation is subject to the following two conditions:

- (1) This device may not cause harmful interference and
- (2) This device must accept any interference received, including interference that may cause undesired operation.

## **FCC RF Radiation Exposure Statement**

This equipment complies with FCC RF radiation exposure limits set forth for an uncontrolled environment.

This equipment must not be co-located or operating in conjunction with any other antenna or transmitter.