

# Importing the InTouch Introductory Demo Application



# About the InTouch Introductory Demo Application

The InTouch Introductory Demo application is an aaPKG file familiar to users of InTouch Modern Applications as well as to users of Managed InTouch. This application provides a demonstration of InTouch Modern Application capabilities in an immersive experience:

- Import and create an InTouch Modern Application.
- View and work with the application in 1080p (1920 x 1080) resolution.
- Edit the application in WindowMaker.
- Operate the application in WindowViewer.

The instructions for importing and creating the InTouch Introductory Demo application closely follow the procedure for importing and creating any InTouch Modern Application. The WindowMaker and WindowViewer environments are the same as those you'll find in full production-level InTouch.

# Importing the InTouch Introductory Demo Application

Follow these steps to import and use the InTouch Demo application.

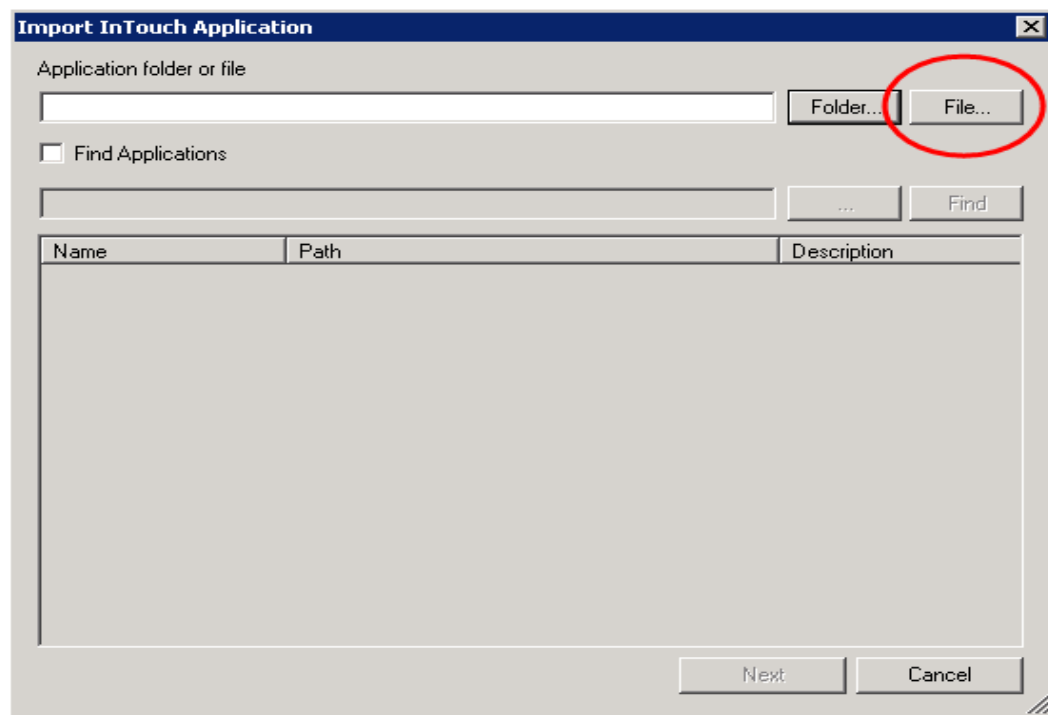
---

**Note:** Run the application in 1080p (1920 x 1080) resolution.

---

1. Open the **InTouch Application Manager**.
2. Select the **Import** wizard by one of the following methods:
  - a. Select **Import** from the **File** menu,
  - b. Select the **Import** icon from the men bar, or
  - c. Press the **Ctrl + I** keys.

The **Import InTouch Application** wizard appears with buttons and fields to select the InTouch Demo application package file (.aaPKG).



3. Search for the InTouch Demo file
  - a. Click the **File** button.
  - b. Navigate to the folder at the following path to find the demo application file:  
**<InTouch installation folder>\DemoApp\InTouch Introductory Demo 1080p.aaPKG**
  - c. Click the file to be imported. The selected file appears in the **File name** field.

- d. Click **Open**. The InTouch Demo file appears in the top field of the **Import InTouch Application** wizard.
  - e. Click **Next**. The **Create New Application** wizard shows a field to specify the base folder path to import the file you selected.
4. Click **Next**. The **Create New Application** dialog box appears with a field to enter a name of the folder to place the imported application.
  5. Type the name of the folder to place the imported application.
  6. Click **Next**. The **Create New Application** wizard updates to show fields to enter a name and a description of the imported demo application.
  7. In the **Name** field, accept the existing name or type a new name for the InTouch Demo application.
  8. If you want, enter a description of the demo application in the **Description** field.
  9. Click **Finish**. After the demo application is imported, it appears in **Application Manager's** list of applications.
- Now you can choose to edit the application in **WindowMaker** or to run it in **WindowViewer**.