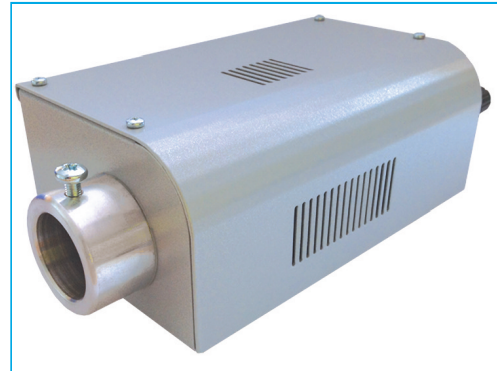
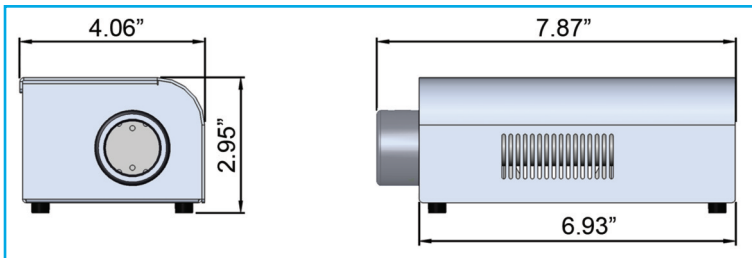


Luna Slimline LED Illuminator



The Luna Slimline is a efficient fiber optic illuminator, which is powered by LEDs.

The illuminator has a powerful light output combined with cool and silent operation make it perfect for architectural lighting projects, both indoor and out.

The Luna illuminator features inbuilt DMX, 0-10V or manually controlled dimming. These units can be used in either standalone mode or can be connected in series and controlled with a standard DMX controller.

Available with either 3000K or 4000K colour temperatures, and fitted with a standard 30mm fiber port connector, this illuminator is suitable for both new projects and retro-fitting to existing fiber optic installations.

Description	
Port connector size	30mm (1.2") diameter
Fiber type	Glass/PMMA
Supply voltage	100-240 VAC 47-63 Hz
PSU output	External 24V DC, 0.75A, 18W Maximum
Power consumption	12W (3000K) 13W (4000K)
LED power	11.5W
LED Type	White light LED
Lamp CRI	>80 CRI (3000K) >75 CRI (4000K)
Lamp color temperature	3000K or 4000K
Lamp life	50,000 hours in ambient 25°C
Operating environment	Indoor / dry
Dimming control	Dimming via DMX , 0-10V or Manual control
0-10V Control	0-10V DC recieving
DMX	User addressable 1 channel dimming
Material	Aluminium, anodised silver
Enclosure Material/Color	Silver
Size (L x W x H)	L: 6.93" (176mm) x W: 4.06" (103mm) x H: 2.95" (75mm)

Like all our range, this light source is undergoing constant improvements and upgrades, so we reserve the right to alter specifications if required.



Universal Fiber Optic Lighting LLC

6119A Clark Center Avenue | Sarasota | FL34238 |

Tel: 941 343 8115 | 800 UFO 5554

www.fiberopticalighting.com