

*** USER'S MANUAL ***

FCC ID : E205614MX-1

Federal Communications Commission (FCC) Statement

This equipment has been tested and found to comply with the limits for a Class B digital device, pursuant to Part 15 of the FCC Rules. These limits are designed to provide reasonable protection against harmful interference in a residential installation. This equipment generates, uses and can radiate radio frequency energy and, if not installed and used in accordance with the instruction, may cause harmful interference to radio communications. However, there is no guarantee that interference will not occur in a particular installation. If this equipment does cause harmful interference to radio or television reception, which can be determined by turning the equipment off and on, the user is encouraged to try to correct the interference by one or more of the following measures:

- Reorient or relocate the receiving antenna.
- Increase the separation between the equipment and receiver.
- Connect the equipment into an outlet on a circuit different from that to which the receiver is connected.
- Consult the dealer or an experienced radio / TV technician for help.

Warning : A shielded-type power cord is required in order to meet FCC emission limits and also to prevent interference to the nearby radio and television reception. It is essential that only the supplied power cord be used.

Use only shielded cables to connect I/O devices to this equipment.

You are cautioned that changes or modifications not expressly approved by the party responsible for compliance could void your authority to operate the equipment.

Introduction

Thank you for choosing modem, we produce computer communication and peripheral products, obtained our ISO 9002 certificate in 1995; our products are quality assured, superb in functions and reliable, as well as complete in our lines of different models. Even though modems are electronical hi-tech precision products, but they are simple to use, all the functions are controlled by computer communication softwares, users often overlooked their presence. If this is the first time you are using a modem, you can refer to the "Modem Installation Instructions" to install your modem, then using the enclosed disc to install the driver of the modem; you will be able to use your browser to enjoy the convenience and pleasure in surfing the internet. If you would like to know more about your modem, or you would like to use modem in special functions, please refer to the detailed descriptions and instructions in the files included in the disc.



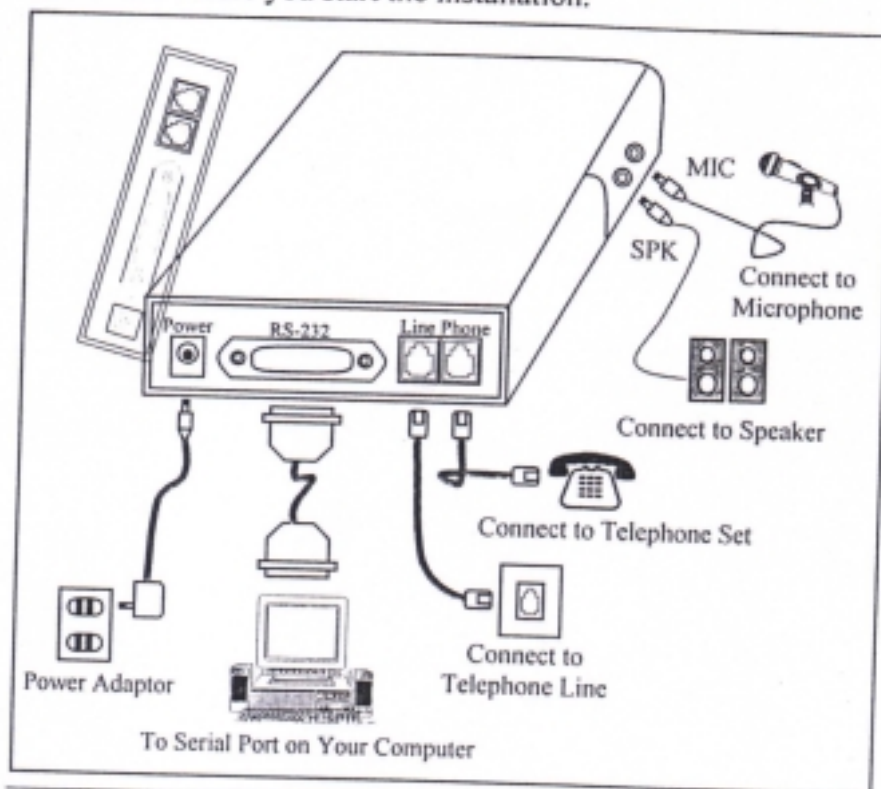
European CTR21 compliance

The equipment has been approved in accordance with Council Decision 98/482/EC for pan-European single terminal connection to the public switched telephone network (PSTN). However, due to differences between the individual PSTNs provided in different countries, the approval does not, of itself, give an unconditional assurance of successful operation on every PSTN network termination point. In the event of problem, you should contact your equipment supplier in the first instance.

Modem Installation Instructions

- PHONE** : Accepts a Telephone set Connected Parallel to your Modem.
- LINE** : Accepts the RJ-11 Cable that links your Modem to a Telephone line or to a 2-Wire Leased-Line.
- RS-232** : Accepts the serial Cable that is connected between your Modem and your Computer.
- 12VAC** : Accepts the power adaptor that comes with your modem.

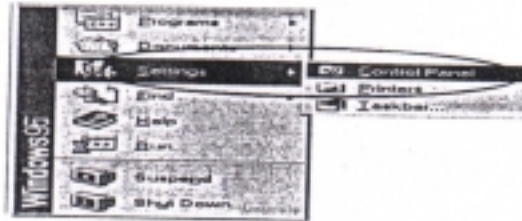
The illustration below shows how to connect modem with Power 、 RS-232 (serial port) 、 Phone Lines 、 Telephone 、 Speakers 、 Microphone and Computer. Please unplug all the equipment to be connected before you start the installation.



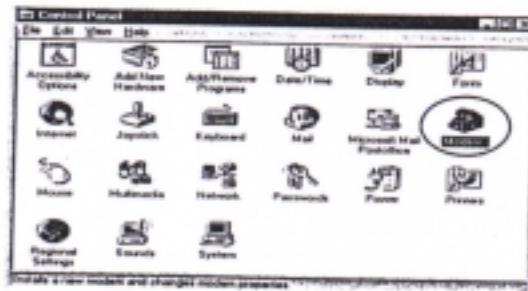
Win95/98 Modem Driver Installation

This modem is fitted with Win95/98 PnP function, connect modem to your PC and enter the Windows system, Windows will automatically locate the appropriate driver for your modem. If you do not use Win95/98 's auto function, or Windows is unable to locate the required driver, you can follow instructions provided below to install the driver manually.

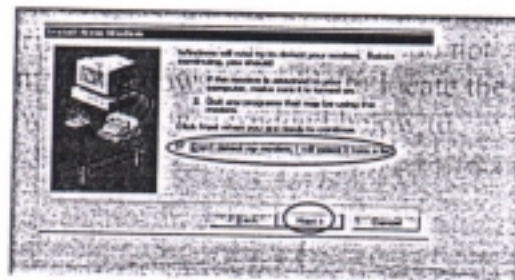
- (1) Turn on computer. Move mouse to "Start" at left hand side, enter "Settings" and select "Control panel" go to next window.



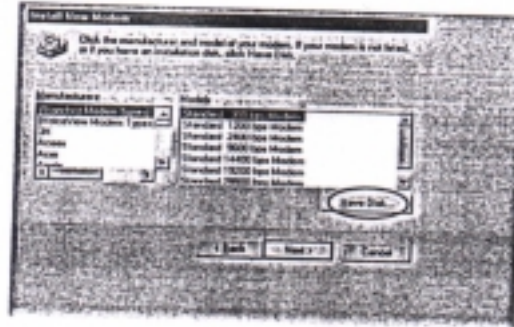
- (2) Under "Control Panel" select "Modems". (or Move mouse to "My computer" at right hand side, enter "Control panel and Modems".)



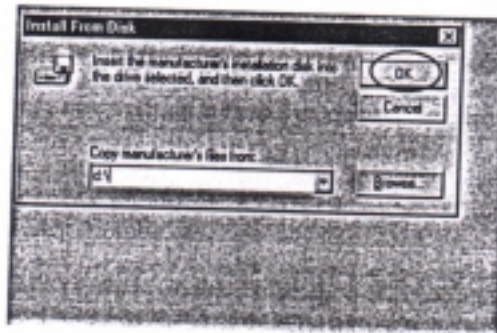
- (3) In Install New Modem, please tick "Don't detect my modem; I will select it from a list", and then go to next step.



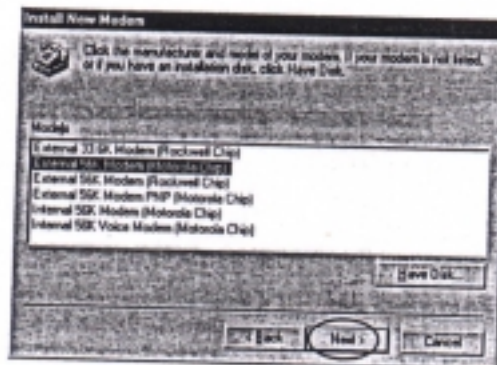
- (4) Because the modem is not listed, you click "Have Disk" for other modem models.



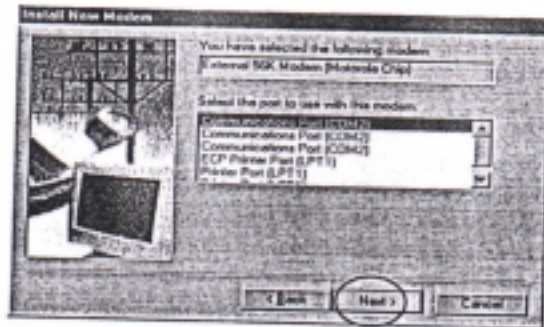
- (5) Insert the installation disk into the driver selected, click "Browse", select one of the inf files.



- (6) Click the manufacturer and model of your modem, and then go to next step.



- (7) Select the port to use with this modem, for example COM2, and then click "Next".



- (8) Your modem has been set up successfully. Click "Finish".



- (9) Select the modem you have, and then click "Close".

