

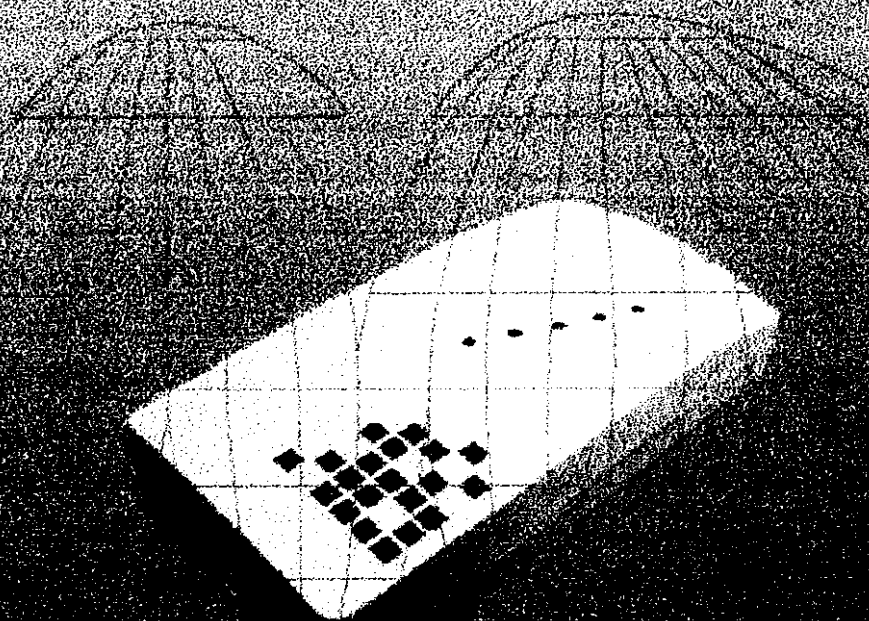
EXHIBIT C

User Manual

USB MODEM

V.90 USB

User's Guide



Introduction

Thank you for choosing USB Modem, we produce computer communication and peripheral products, in 1995 it obtained its products are quality assured, superb in functionality and reliability, even though modems are hi-tech precision products, they are simple to use, all the functions are controlled by computer communication software, allowing them to be very easy to use.

If this is your first time using a USB Modem, you can refer to the "USB Modem Installation Instructions" to install your modem, After the installation is complete, through your ISP internet account, you will be able to surf the internet. If you would like to know more about your modem, or you would like to use modem in special functions, please refer to the detailed descriptions and instructions in the files included in the disc.



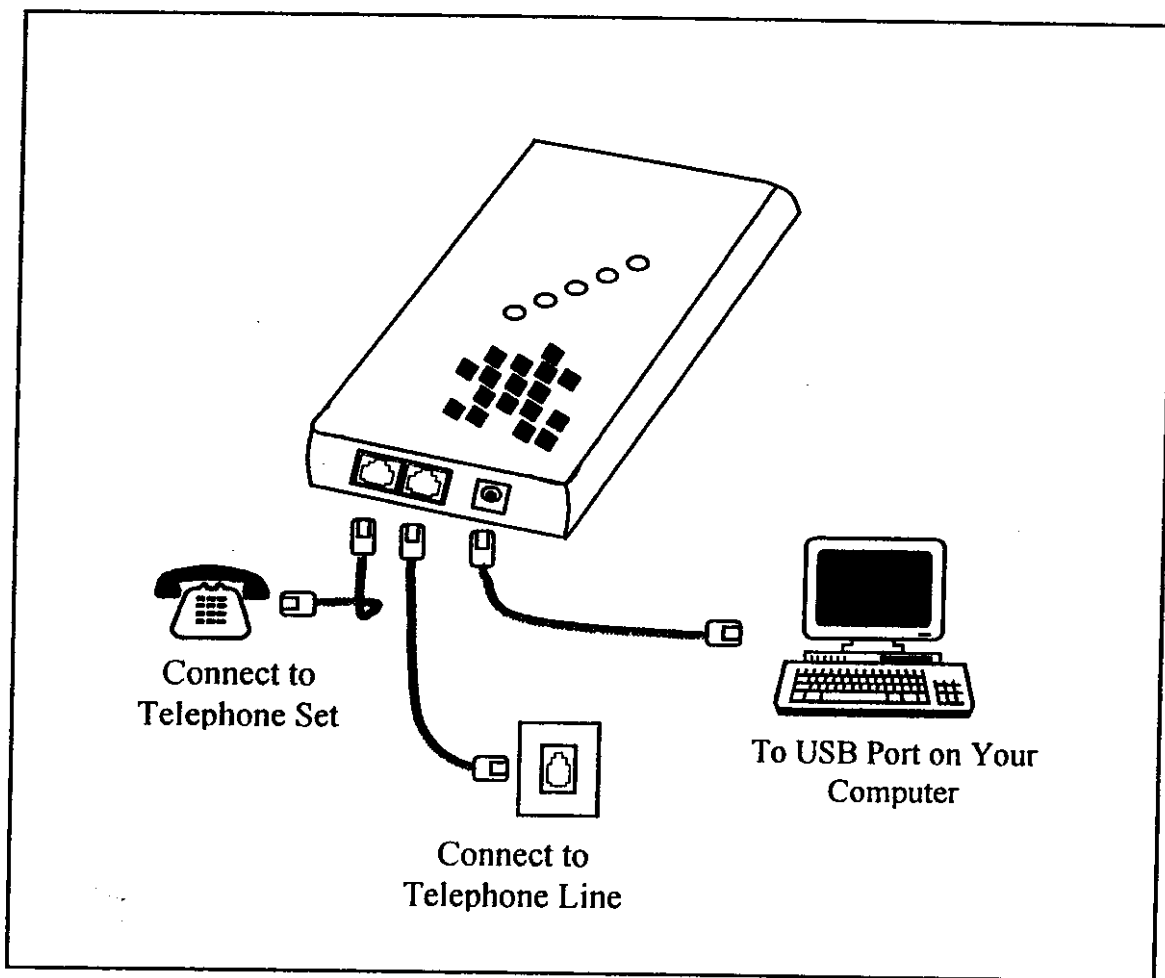
European CTR21 compliance

The equipment has been approved in accordance with Council Decision 98/482/EC for pan-European single terminal connection to the public switched telephone network (PSTN). However, due to differences between the individual PSTNs provided in different countries, the approval does not, of itself, give an unconditional assurance of successful operation on every PSTN network termination point. In the event of problem, you should contact your equipment supplier in the first instance.

Modem Installation Instructions

- PHONE** : Accepts a Telephone set Connected Parallel to your Modem.
- LINE** : Accepts the RJ-11 Cable that links your Modem to a Telephone line or to a 2-Wire Leased-Line.

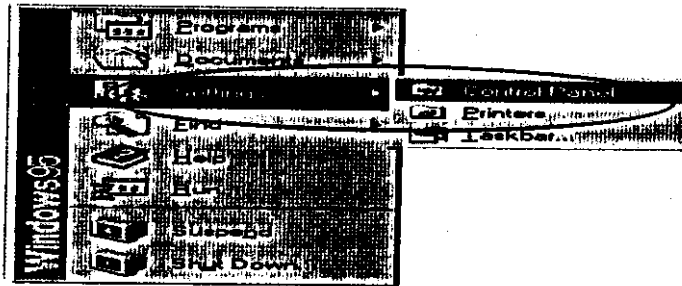
The illustration below shows how to connect modem with Phone Lines ` Telephone and Computer.



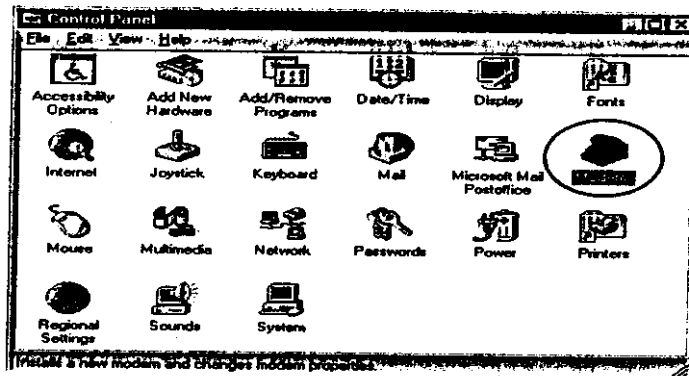
Win95/98 USB Modem Driver Installation

This USB Modem is fitted with Win95/98 PnP (Plug & Play) function, So when you connect the modem to your PC and enter the Windows 95/98 system, Windows will automatically locate the appropriate driver for your modem. If you do not use Win95/98 's auto function, or Windows is unable to locate the required driver, you can follow instructions provided below to install the driver manually.

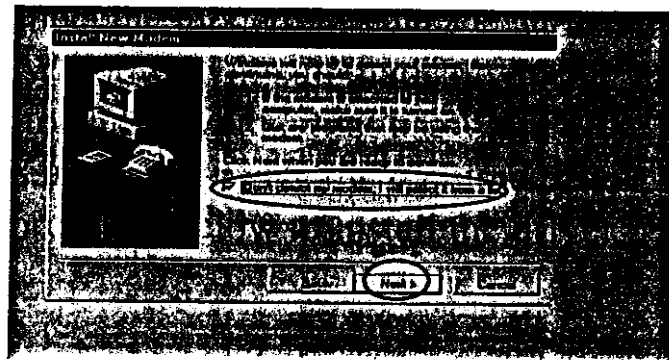
(1) Turn on computer. Select "Start" at left hand side, enter "Settings" and select "Control panel" go to next window.



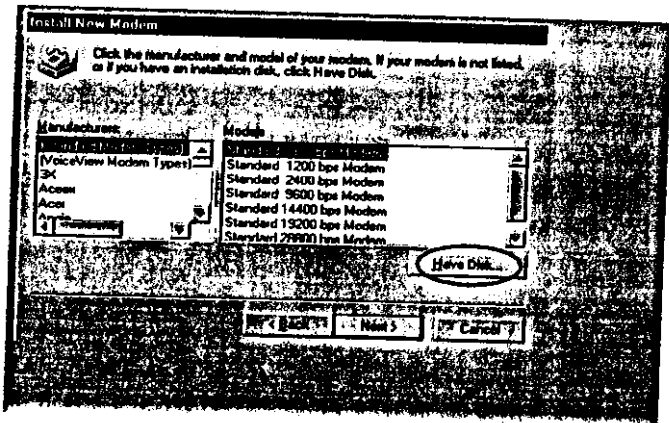
(2) Under "Control Panel" select "Modems". (or Move mouse to "My computer" at right hand side, enter "Control panel and Modems".)



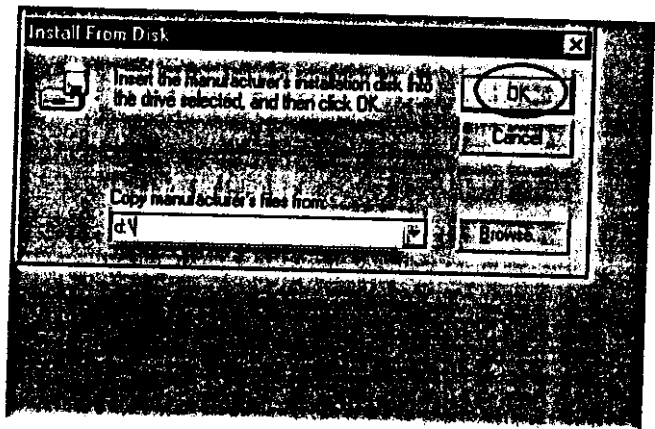
(3) In Install New Modem, please click "Don't detect my modem; I will select it from a list", and then go to next step.



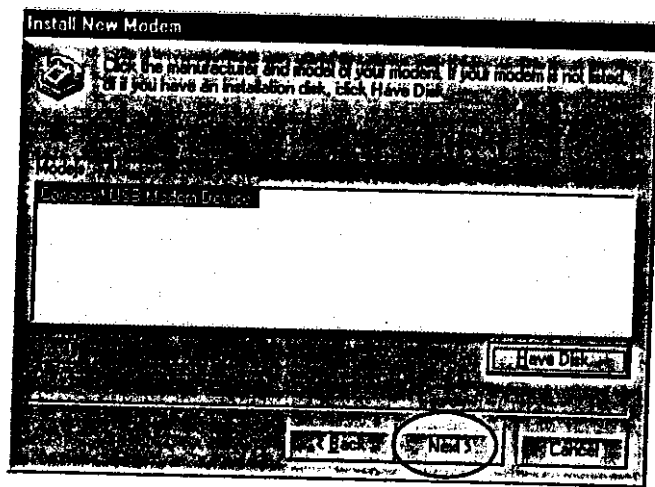
(4) The modem will not be listed, so first insert the installation disk into the disk drive. Then you must choose the "Have Disk" option.



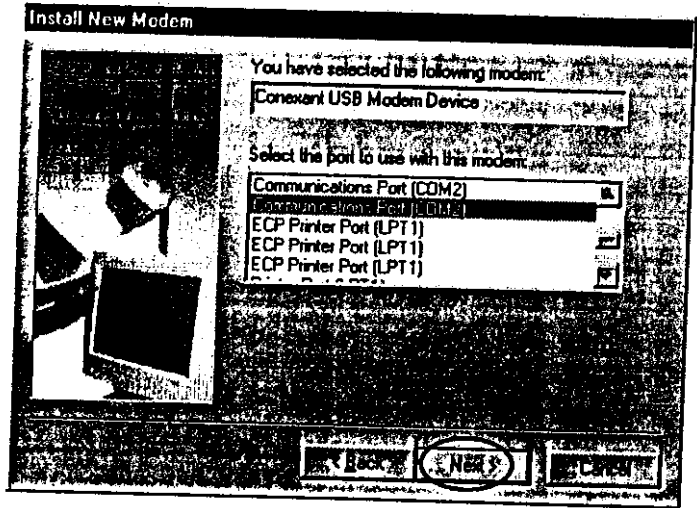
(5) Insert the installation disk into the driver selected, Choose "Browse", and select one of the inf files.



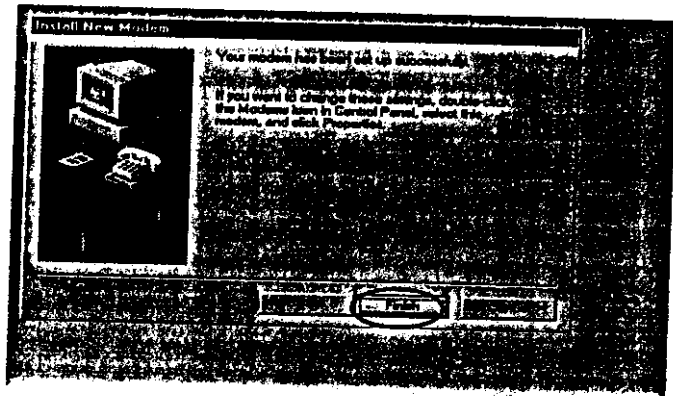
(6) Click the manufacturer and model of your modem, and then go to next step.



(7) Select the port to use with this modem, for example COM2, and then click "Next".



(8) Your modem has been set up successfully. Click "Finish".



(9) Select the modem you have, and then click "Close".

