

# TurboFire® Wireless Controller for Xbox 360

## User Guide

### 1. Introduction

Congratulations on your purchase of Dattel's state-of-the-art TurboFire Wireless Controller for Xbox 360. TurboFire is the only 3rd party 360 controller to offer 100% compatible communication with the Xbox 360 using the console's proprietary wireless technology.

It faithfully recreates all of the functionality of the original Xbox 360 controller including vibration feedback and full analogue input. In addition, the TurboFire Wireless Controller enhances your gaming with a programmable Rapid Fire function and new ergonomic design.

### 2. Safety Information

The TurboFire controller has been designed to be as ergonomic as possible but as with any gaming peripheral you are advised to take regular breaks during your gaming session especially if any discomfort occurs.

Do not expose the product to temperatures in excess of 40°C or below -10°C.

#### IMPORTANT BATTERY PRECAUTIONS

Please ensure that you follow the following recommendations to avoid causing damage to batteries or the product:

- Do not mix standard and rechargeable batteries.
- Never mix new and used batteries with different charge levels.

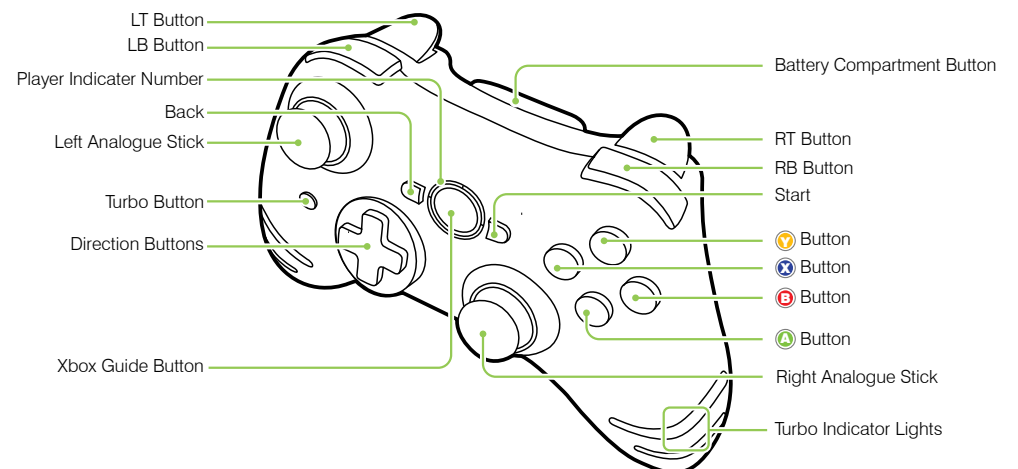
- Ensure that batteries are fitted in accordance to the shown diagram.
- Do not leave flat batteries in the product
- Avoid mixing batteries of different types or brands
- Ensure that batteries are removed from the product for long periods of non-use
- Do not use batteries which appear to be damaged
- When disposing of batteries follow appropriate local guidelines and regulations

### 3. Insert Batteries

Please read the safety information (opposite) regarding battery precautions.

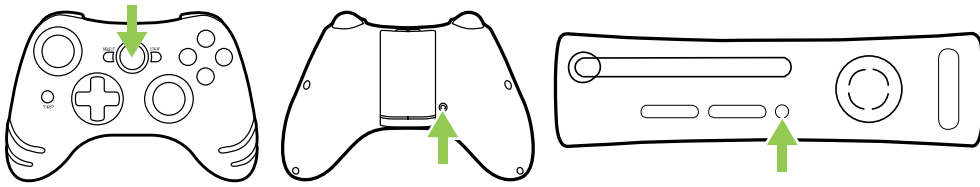
1. Press the 'Battery Compartment Button' and remove the battery compartment from the back of the controller.
2. Insert either 2x standard AA batteries or 2x rechargeable AA batteries into the battery compartment, ensuring that you orientate them as shown on the inside of the battery moulding.
3. Re-attach the battery compartment to the controller, ensuring that it latches correctly.

### 4. Controller Button Layout



The left and right analogue sticks can also be pressed as buttons.

## 5. Syncing the Controller



Before you can use the TurboFire Wireless Controller for the first time you need to sync it with your Xbox 360.

To do this, press the 'Xbox Guide Button' on the front of the controller so that the player indicator number lights begin to flash continuously. Next press the 'Sync' button on the rear of the controller so that the player number indicator lights whilst continuing to flash alternate between the player numbers. To complete the syncing process, press the 'Sync' button on the front of the machine.

After a few seconds the controller and console will be synchronised and a player number will be assigned to the controller and displayed on the player number indicator.

## 6. Using the Turbo Rapid Fire function

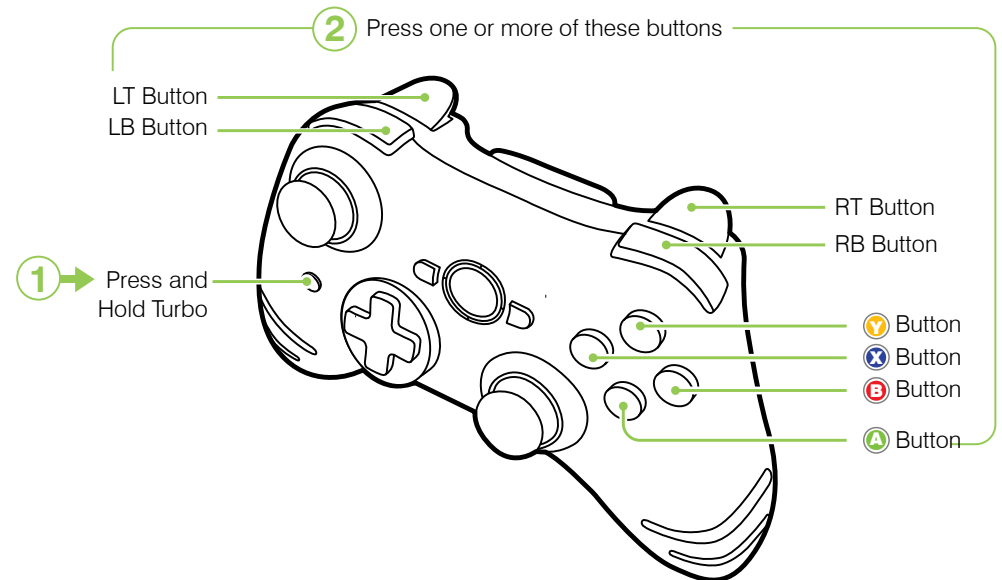
The TurboFire controller is equipped with a unique programmable Turbo Rapid Fire function that can boost your firepower in any Xbox 360 game. The Turbo Rapid Fire function has 3 mode settings and can be assigned to wide range of buttons.

Each of the mode settings allow the Turbo Rapid Fire to run at its fastest speed but each mode includes a very slight timing difference which is required for some games.

### Step 1: Choose Rapid Fire Buttons

By default, Turbo Rapid Fire is assigned to the Right Trigger button but different games will use different buttons for actions like jump, shoot, block etc. In order for you to get the most out of the rapid fire function you can choose exactly which button or buttons it is assigned to.

To program which buttons will use rapid fire, press and hold the TURBO button and then any one of the buttons shown in the illustration below. When you have made your selection, release the TURBO button. Turbo Rapid Fire can be enabled on the following 8 buttons:

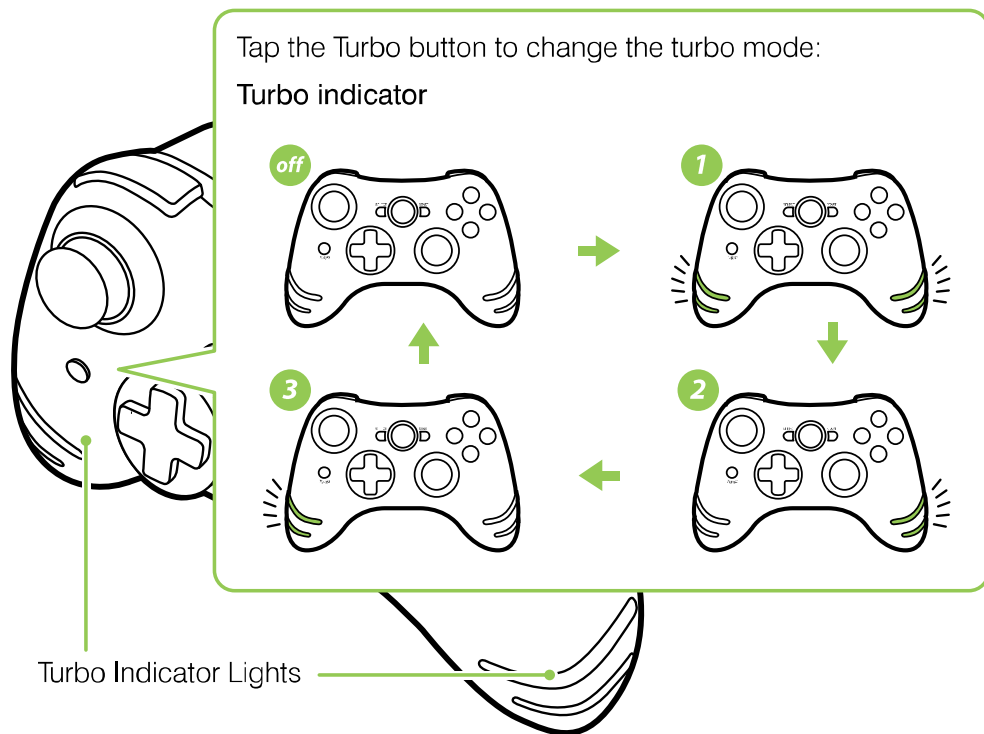


The TurboFire Wireless Controller will remember this configuration until the batteries become flat or are removed or the process is repeated to configure a different set of buttons.

### Step 2: Enable rapid fire and set the fire speed

After assigning Turbo Rapid Fire to one or more buttons (see previous section) the Turbo Indicator Light on both handles of the pad will illuminate. This indicates that Turbo Rapid Fire is running in mode 1. To set the Turbo Rapid Fire to mode 2 or mode 3, tap the Turbo button one or more times.

To change the mode at any time, tap the Turbo button to vary the rapid fire mode or disable it again (see the following illustrations):



## 7. Compatibility Warranty

Because this TurboFire controller has a unique online software update feature, Datel warrants that this controller will always be compatible with your Xbox 360 console and any Dashboard updates. In the unlikely case that a future software update from Microsoft causes the TurboFire controller to stop working, Datel offer 2 easy solutions.

1. The TurboFire controller includes a USB connection. If your controller is no longer recognized after a Microsoft system update, you can simply connect your controller to any PC via USB and download the controller software update from

Datel's website, [www.codejunkies.com](http://www.codejunkies.com)

2. If you do not have access to a computer, you can send your TurboFire controller to Datel Customer Service at no charge and we will update your controller and send it back to you.

This amazing software update feature means that you can also download any of the special control configurations that our Datel programmers are creating for all the hottest games! See [www.codejunkies.com](http://www.codejunkies.com) for details.

## 8. Technical support and customer service

Before contacting Datel's customer service department, please ensure that you have read through and understood the information in this manual.

Please ensure that you have information on when and where you purchased this product to hand.

### Datel Customer Services USA

ATTN: Customer Services, Datel Design & Development Inc  
33 North Garden Avenue, Suite 900, Clearwater, FL 33755  
UNITED STATES

Email: [support@dateldesign.com](mailto:support@dateldesign.com)

Knowledgebase: <http://www.datelcustomerservice.com>

Web: <http://us.codejunkies.com>

## FCC Rules, Part 15.

This equipment has been tested and found to comply with the limits for a class B digital device, pursuant to Part 15 of the FCC rules. These limits are designed to provide reasonable protection against harmful interference in a residential installation. This equipment generates, uses and can radiate radio frequency energy and, if not installed and used in accordance with the instructions, may cause harmful interference to radio communications. However, there is no guarantee that interference will not occur in a particular installation. If this equipment does cause harmful interference to radio or television reception, which can be determined by turning the equipment off and on, the user is encouraged to try to correct the interference by one or more of the following measures:

- Reorient or relocate the receiving antenna
- Increase the separation between the equipment and receiver
- Connect the equipment to an outlet on a circuit different from that to which the receiver is connected
- Consult the dealer or an experienced radio/TV technician for help

### This device complies with Part 15 of the FCC rules.

Operation is subject to the following two conditions:

- This device may not cause harmful interference.
- This device must accept any interference received, including interference that may cause undesired operation

Changes or modifications not expressly approved by the party responsible for compliance could void the user's authority to operate the equipment.

#### Responsible Party:

Datel Design & Inc,  
33 North Garden Avenue,  
Suite 900,  
Clearwater,

FL 33755  
United States of America  
Tel. 727-431-0650

#### RF warning statement

The device has been evaluated to meet general RF exposure requirement. The device can be used in portable exposure condition without restriction."

---

© 2010 Datel Design & Development Ltd. *TurboFire* is a registered trademark of Datel Design and Development Inc.

TurboFire Wireless Controller for Xbox 360 is a 100% unofficial product and is NOT sponsored, endorsed or approved by MICROSOFT, nor any games developer or publisher. Xbox 360 is a registered trademark or trademark of MICROSOFT in the United States and/or other countries.



TouchSense® Technology Licensed from Immersion Corporation. Protected by one or more of the following patents.

U.S. Patents: 4823634, 4896554, 5184319, 5185561, 5220260, 5235868, 5389865, 5414337, 5459382, B1 5459382, 5482056, 5513100, 5559412, 5576727, 5589854, 5592401, 5623582, 5629594, 5631861, 5676157, 5691898, 5701140, 5721566, 5724264, 5731804, 5734373, 5739811, 5767839, 5769640, 5790108, 5805140, 5821920, 5825308, 5828197, 5831408, 5844392, 5872438, 5880714, 5889670, 5889672, 5907487, 5929607, 5930741, 5929846, 5956484, 5959613, 5999168, 6015473, 6020875, 6020876, 6020967, 6024576, 6028593, 6037927, 6042555, 6046727, 6050718, 6050962, 6057828, 6059506, 6061004, 6067077, 6078308, 6078876, D427635, 6088017, 6088019, 6100874, 6101530, 6104158, 6104379, 6104382, 6106301, 6110130, 6125337, 6125385, 6128006, 6131097, 6134506, 6147674, 6148280, 6154198, 6154201, 6161126, 6162190, 6166723, 6169540, 6184868, 6191774, 6195592, 6201533, 6211861, 6215470, 6219032, 6219033, 6232891, 6243078, 6246390, 6252579, 6252583, 6256011, 6259382, 6271828, 6271833, 6275213, B1 6278439, 6281651, 6285351, 6288705, 6292170, 5754023, \*RE37374, 6292174, 6300936, 6300937, 6300938, 6304091, 6310605, 6317116, 6323837, 6342880, 6343349, 6348911, 6353850, 6353427, 6366272, 6366273, 6374255, 6380925, 6396232, 6400352, 6411276, 6413229, 6424333, 6424356, 6429846, 6428490, 6433771, 6437771, 6448977, 6469692, 6470302, 6486872, 6497672, 6563487, 6564168, 6580417, 6636161, 6636197, 6639581, 6654000, 6661403, 6680729, 6683437, 6686901, 6686911, 6693622, 6693626, 6697043, 6697044, 6697048, 6697748, 6697086, 6703550, 6704001, 6704002, 6704683, 6705871, 6707443, 6715045, 6750877, 6762745, 6781569