



**RackAccess 8i
RackAccess 16i**

Installation guide



Specifications

Part Numbers

3115-108M-xx	RackAccess 8i console - 15" TFT Display & integrated SCOUTutp 8 port kvm Switch
3115-116M-xx	RackAccess 16i console - 15" TFT Display & integrated SCOUTutp 16 port kvm Switch
3115-116IP-xx	RackAccess 16i console - 15" TFT Display & integrated SCOUTutp 16 port kvm Switch & IP Access
3117-108M-xx	RackAccess 8i console - 17" TFT Display & integrated SCOUTutp 8 port kvm Switch
3117-116M-xx	RackAccess 16i console - 17" TFT Display & integrated SCOUTutp 16 port kvm Switch
3117-116IP-xx	RackAccess 16i console - 17" TFT Display & integrated SCOUTutp 16 port kvm Switch & IP Access
3119-108M-xx	RackAccess 8i console - 19" TFT Display & integrated SCOUTutp 8 port kvm Switch
3119-116M-xx	RackAccess 16i console - 19" TFT Display & integrated SCOUTutp 16 port kvm Switch
3119-116IP-xx	RackAccess 16i console - 19" TFT Display & integrated SCOUTutp 16 port kvm Switch & IP Access

xx represents country specific keyboard layouts

Part Numbers

2364-01P	SCOUTutp CPU Adaptor PS/2
2364-01U	SCOUTutp CPU Adaptor USB
2364-01S	SCOUTutp CPU Adaptor SUN
2364-00A	SCOUTutp Flash upgrade Cable

Physical Properties	Height	Width	Depth	Weight
RackAccess 15" TFT Display	4.32cm / 1.7"	48.26cm / 19"	51.51cm / 20.28"	13kg / 28.6lb
RackAccess 17" TFT Display	4.32cm / 1.7"	48.26cm / 19"	56.59cm / 22.28"	15kg / 33.0lb
RackAccess 19" TFT Display	4.32cm / 1.7"	48.26cm / 19"	56.59cm / 22.28"	15kg / 33.0lb

Operation and

Storage parameters	15" TFT Display	17" TFT Display	19" TFT Display
Operating Temperature:	0 ~ 40° C 32 ~104° F	0 ~ 40° C 32 ~104° F	0 ~ 40° C 32 ~104° F
Humidity:	10~85% RH non-condensing	10~85% RH non-condensing	10~85% RH non-condensing
Storage Temperature:	-20 ~ 60° C - 4 ~140° F	-20 ~ 60° C - 4 ~140° F	-20 ~ 60° C - 4 ~140° F
Humidity:	10~95% RH non-condensing	10~95% RH non-condensing	10~95% RH non-condensing

Connections

PC:	All in one RJ45 Socket (Keyboard, Video and Mouse)
Upgrade	RJ11 Socket
Power	IEC Female connector

Monitor	15" TFT Display	17" TFT Display	19" TFT Display
Display Area:	30.4 x 22.8 cm 12 x 9"	33.7 x 27.0 cm 13.7 x 10.64"	37.6 x 30.10 cm 14.8 x 11.8"
Scan frequency horizontal:	31.47K to 68KHz	31.47K to 68KHz	31.47K to 68KHz
Scan frequency vertical:	60Hz	60Hz	60Hz
Viewing Angle:	160° Horizontal, 160° Vertical	140° Horizontal, 110° Vertical	140° Horizontal, 135° Vertical
Pixels:	1024 x 768	1280 x 1024	1280 x 1024
Pixel pitch:	0.297 x 0.297 mm	0.264 x 0.264 mm	0.294 x 0.294 mm
Picture tube:	15" TFT Active Matrix	17" TFT Active Matrix	19" TFT Active Matrix
Video:	Analog RGB 7Vp-p/75Ω	Analog RGB 0.7 Vp-p/75Ω	Analog RGB 0.7 Vp-p/75Ω
Sync:	Separate	Separate	Separate
Display Data Channel Compatibility	DDC 2B	DDC 2B	DDC 2B

Keyboard

Keys	88 key keyboard & 17 key numeric keypad
Travel	3mm / 0.11"
Typing force	60g ± 20g / 2.11oz ± 0.70oz
Life cycle	10 million key presses

Touchpad

Compatibility	Industrial standard
Mouse button	Two key buttons
Life cycle	>1 million cycles

Operations

User Controls:	On/Off Power Button Contrast, Brightness, Display Quality, OSD adjustment
On Screen Display Adjustment	Auto-Adjustment Contrast, Balance Phase, Pixel clock TXT/GFX Selection Colour temperature & brightness
Control type	Digital
Operating Systems	DOS, Windows (9X, NT4, 2000, XP, 2003 Server) LINUX, UNIX, QNX, SGI, FreeBSD, BeOS, Open VMS, Novell, Alpha UNIX, HP UX, SUN
Transmission distance	Up to 10m (33ft)

Power

Input	110-240 VAC (auto sensing) 48-62Hz
Consumption	35 Watts maximum (On) on 15" RackAccess 45 Watts maximum (On) on 17" RackAccess 50 Watts maximum (On) on 19" RackAccess
	1 Watt Power Saving Mode (Off)

Agency Approvals

EMI	FCC-A and CE
Emissions	MRP-II
Energy Saving	EPA energy star, VESA DPMS

CPU Adaptors	PS/2	USB	SUN
Connections			
Video	HD15	HD15	HD15
Keyboard/Mouse	MiniDin6	USB	MiniDin8
System	RJ45	RJ45	RJ45
Power	From computer's Keyboard port	From USB port	From computer's Keyboard port
Product weight		107g / 0.23lb	
Shipping weight		300g / 0.66lb	
Dimensions		91 x 41 x 24mm / 3.58 x 1.61 x 0.94"	

NOTE: This equipment complies with the requirements of European EMC directive 89/336 EEC in respect of EN55022 Class B, EN 50082-1 and EN 60555-2.

This equipment has been found to comply with the limits for a Class A digital device, pursuant to Part 15 of the FCC Rules. These limits are designed to provide reasonable protection against harmful interference when the equipment is operated in a commercial environment. This equipment generates, uses, and can radiate radio frequency energy and, if not installed and used in accordance with the instruction manual, may cause harmful interference to radio communications.

Operation of this equipment in a residential area is likely to cause harmful interference in which case the user will be required to correct the interference at his own expense.

© Copyright 2003 - 2006. All rights reserved.

Daxten, the Daxten logo, RackAccess and The Brains Behind KVM Switching and Sharing are trademarks of Daxten Industries. All other trademarks acknowledged.

Revision 1.7



RackAccess 8i & RackAccess 16i

Introduction

The RackAccess 8i and 16i are compact 1U high rack mountable TFT Screen, keyboard and mouse, with integrated kvm switch (SCOUTutp). Available in 3 screen sizes 15", 17" and 19"

Product Features

- Integrated SCOUTutp 8 or 16 port KVM switch.
- Available with integrated IP control (SCOUTip).
- Operating system independent, transparent to all applications.
- Supports PS/2, USB and SUN computers through an adapter for each platform.
- Hot key controls (Switch channels using the pop up menu)
- Programmable scan mode for automatic sequencing between PCs
- Configure channels and access privileges with easy menus and help screens
- Assign names to individual PCs
- Flash upgradeable
- Distance between console and computer can be up to 10m with simple CAT5 cabling
- Plug and play system configuration.
- LCD panel size: 15", 17" or 19" depending on model.
- Keyboard layouts in English UK and US, German, French, Spanish, Swiss, Dutch, Danish, Russian, Swedish and Norwegian
- High VGA resolution 1024x768 on the 15" model, 1280x1024 on the 17" and 19" models.
- 88key keyboard + 17key numeric keypad
- Standard 19" Rack mounting accessories

High Video Quality

The RackAccess built in TFT LCD monitor supports resolution up to 1024x768 (15") or 1280x1024 (17" & 19"), a colour depth to 16M (dithering), and includes automatic adjustments to easily configure your LCD settings for optimum video quality.

LCD monitor's OSD operation

Control Functions

The Monitor control functions are located right to the screen.

The control key description

- | | | |
|----|-------|---|
| 1. | MENU | Activate the on screen display function |
| 2. | + & — | Increase / Decrease - Contrast control |
| 3. | ▲ & ▼ | Up / Down – Menu Access |
| 4. | ⏻ | Power Switch |

Description

5. Menu

Press the Menu button to activate the on screen display screen. It is a toggle key, switching the OSD on and off. Press twice to turn off the OSD. The OSD screen will automatically turn off after 10 seconds idle time.

6. + & — Select keys / Brightness Control keys

The two keys have two sets of functions:

- When OSD screen is not activated, the two keys are used to adjust the brightness
- When OSD screen is activated, the two keys are used to select the required adjustment items

7. Power switch

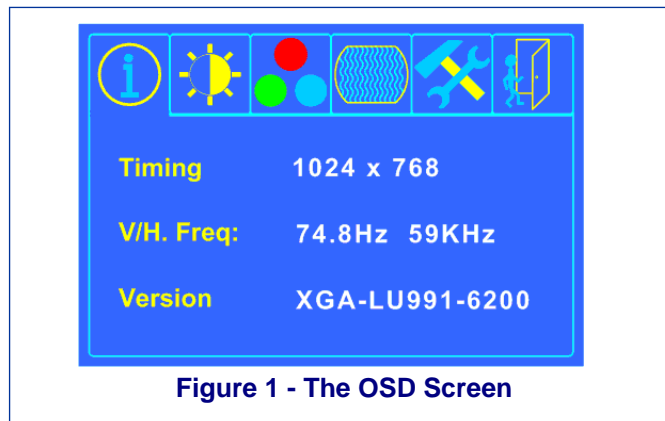
Use the power switch to turn ON or OFF power. We recommend turning your system on first, then the LCD monitor.

Adjusting the Monitor

The LCD monitor is designed to work with a range of compatible video adapters on the market. Due to all the possible variations between these video adapters, you may need to adjust the settings for your video card.

Adjustment Procedure

First, you must activate the OSD screen through pressing the MENU key, the OSD menu will show in the centre of screen as below



Pressing the OSD Menu button causes the OSD menu screen to appear.

- Use the **+** & **-** keys to select desired group of options.
- Use **▼** key for sub menus or select item to change.
- Use the **+** & **-** keys to change the value.
- Use **▲** to go back one level

Press the Menu button to exit the OSD



Display current timing information



Brightness and Contrast Adjustment



Adjusts the Brightness value



Adjusts the Contrast value
(Valid only when your colour temperature is set to user mode)



Return to the previous Menu



Colour Temperature Adjustment



Enables or disables the sRGB values



Display Quality Adjustment



Auto Adjust - use this option to apply setting automatically



User Mode: Changes the RGB colour values



Execute the white balance function



Change Red gain for the colour temperature



Change Green gain for the colour temperature



Change Blue gain for the colour temperature



Return to the previous Menu



Sets the colour temperature to 6500K



Sets the colour temperature to 9300K



Return to the previous Menu



OSD Adjustment



Restores settings to factory default values



OSD parameter setting



Sets the OSD timer



Moves the OSD menu horizontally



Moves the OSD menu vertically



Return to the previous Menu



Exit the OSD screen



Changes the viewable screen size



Adjusts phase tracking to reduce screen flicker



Moves the whole screen left or right



Moves the whole screen up or down



Return to the previous Menu



Set the graphic mode or text mode



Enable 720x400 text mode



Enable 640x400 graphic mode



Return to the previous Menu

Notes:



Out of Range

When the monitor is ON and there is no video signal received, the following message will be displayed

When the frequency range of the signal is out of the Monitor's specifications, this will be displayed

Auto-Adjustment

We recommend that you use the Auto-Adjustment to get optimized video quality. Use the **+** & **-** key to select auto-adjustment, then press **▼** key to get optimized quality.

Introduction – Integrated SCOUTutp Switch

The built in KVM switch (SCOUTutp) will ensure easy and accurate control of up to 16 PCs through a single console. The SCOUTutp is compatible with PS/2, USB and SUN style computers. It has keyboard and mouse emulation for error free boot-ups. Switching between PCs can be accomplished through keyboard Hot Key commands, or through the OSD (On-Screen-Display).

Installation

Before connecting your computers and console devices to the SCOUTutp switch, please ensure that all devices are powered off.

1. Connecting the computers with an UTP patch cable and a PS/2 adapter :
Connect the blue HD 15-pin male connector to the VGA port on your computer.
Connect the purple PS/2 (6-pin Mini DIN) keyboard connector to the PS/2 keyboard port on your computer.
Connect the green PS/2 (6-pin Mini DIN) mouse connector to the PS/2 mouse port on your computer.
Connect the UTP cable with the PS/2 adapter and the desired SCOUTutp computer port.
2. Connecting the computers with an UTP patch cable and a USB adapter:
Connect the blue HD 15-pin male connector to the VGA port on your computer.
Connect the USB connector to a USB port on your computer.
Connect the UTP cable with the USB adapter and the desired SCOUTutp computer port.
3. Connecting the computers with an UTP patch cable and a SUN adapter:
Connect the blue HD 15-pin male connector to the VGA port on your computer.
Connect the SUN connector to the keyboard & mouse port on your computer.
Connect the UTP cable with the SUN adapter and the desired SCOUTutp computer port.
4. Power up the RackAccess.

Using the SCOUTutp

Note: Before switching your computers on, please configure non PS/2 computers emulation type in the OSD!

The SCOUTutp provides two possibilities to select the desired computer. You may use either the keyboard Hot Key commands or take advantage of the OSD (On-Screen-Display). You may notice that the mouse cannot be used for around 1 second when the SCOUTutp switches to another computer. This is normal and is caused by the synchronization process which ensures that the mouse operates correctly.

Keyboard Hot Key commands

To send Hot Key commands to the SCOUTutp switch, press and release the **Ctrl** key twice within 2 seconds. Press a command key for the desired effect. The following commands are supported:

First Key	Second Key	Command Key	Confirmation Key	Command Result
Ctrl	Ctrl	Port number	Enter	Switches to the desired PC

In Auto-Scan mode, the image shown on the monitor will automatically switch to the next computer. The delay is user definable

OSD (On-Screen-Display)

To access the OSD, press the Hot Key twice and the OSD window appears:

Lines with blue text show active computers, lines with grey text show inactive computers.

To navigate up and down use the UP and DOWN arrow keys.

To jump from one column to another (in Settings) use the **Tab** key.

Port No.	Computer Name	No.	C = computer S = switch	
01	SUN	01	C	blue
02	PS/2 1	02	C	grey
03	SCOUT	03	S	grey
04	SUN	04	C	blue
05	PS/2 3	05	C	blue
06	USB	06	C	grey
07	USB	07	C	grey
08	PS/2 4	08	C	blue

After you have selected a computer press **Enter**. A confirmation label appears showing which computer you accessed. To exit the OSD or return to a previous window within the OSD press **ESC**.
Note: When you use the OSD you can't use the keyboard Hot Keys at the same time.

OSD Settings

Press **F2** and the setting window will appear.

When the OSD is password protected only the administrator has access to this window.

OSD Settings
General
Ports
Time
Users
Security

General Settings

Select General and press **ENTER**, the General Settings window will appear. From this window you can do the following:

General Settings
Security
Hotkey
Autoskip
Serial port
Keyboard language
Switch name

Security

The OSD comes with an advanced password security system with 3 different security levels. Each security level has different access rights to the system and have are limited in number as shown below.

1 x Administrator (Status A)

Set and modify all Passwords and security profiles
Fully access any computer
Access all OSD functions

1 x Supervisor (Status S)

Fully access any computer
Access the following OSD functions only – **F4** Scan, **F5** Tune and **F6** Moving the Confirmation label.

6 x User (Status U)

Each User has a profile set by the Administrator that defines the access level to different computers.

Activating password protection

Only the Administrator can password-protect or disable the protection of the OSD as follows:

1. Navigate to the Security line and press the **Space Bar** to toggle between On and Off.
2. The password box appears. Type the Administrators password (**default password is admin**).
3. Press **Enter**

Hot Key

Press the Hot Key and the OSD appears. To change the Hot Key to [**Ctrl Ctrl**] (CL on display), **Ctrl**, **F11**, **Shift**, **Shift** (SH on display) or **Print Screen**.

Press the **Space Bar** to toggle between the different options. Once selected, press the new Hot Key to display the OSD in the future.

Autoskip

To access only the active computer lines on the OSD you can use this feature.

To activate the Autoskip toggle between the options with the **Space Bar**.

Serial port

Serial port ON means the Control Management program can be used. To change the Serial port settings, navigate to the Serial port line and toggle between the options using **Space Bar**.

Keyboard language

The default is US English which can be changed to German (DE) or French (FR) as follows:

Navigate to the Keyboard language line and toggle between the options using the **Space Bar**.

Switch name

You can substitute up to 18 characters in the line. A space constitutes a character. Give each switch's OSD a different name.

Factory Default

To return to the factory default Settings you have to press **F7** and all changes will be removed.

Ports

In the Settings window navigate to the Ports line and press **ENTER**. The Ports Settings window appears.

Name (Editing the computer name)

In this window you can edit the computer names with up to 15 characters.

To erase a character you have to select it and then press the **Space Bar**. Blank spaces remain in place of the character.

To erase an entire line place the cursor at the beginning of the line and press the space bar until the line is erased.

PORTS SETTINGS

	Name		K B	HKEY
01	COMPUTER	01	P S	N O
02	COMPUTER	02	U 1	N O
03	SWITCH	03	P S	C L F 1 1
04	COMPUTER	04	P S	N O
05	COMPUTER	05	U 2	N O
06	COMPUTER	06	U 3	N O
07	COMPUTER	07	P S	N O
08	COMPUTER	08	P S	N O

(KB) Keyboard

The SCOUTutp operates with Windows, Linux, HP UX, Alpha UNIX SGI, DOS, Novell, MAC, USB or Open VMS. By default the keyboard mode is set to PS for Intel based computers.

For the other systems set the KB column as follows:

PS Standard keyboard, MAC and SUN

U1 for HP UX

U2 for Alpha UNIX, SGI, Open VMS

U3 IBM AIX

Adding/changing a Hot Key (HKEY)

If you cascade the SCOUTutp by connecting another SCOUTutp Switch to a computer port instead of a computer, you have to connect the utp cables to the new switch and you have to define the HOT KEYS for the new OSD. When you cascade these hotkeys must be different for the top and bottom layers.

To add/change a hotkey:

1. On the line to which the Switch is connected, press **Tab** to jump to the HKEY column.
2. Toggle between the options using the space bar.

Time Settings

In the Settings window navigate to the Time line and press **ENTER**. The Time Settings window appears

Scan (SCN) - Label (LBL) - Time out (T/O)

SCN - In the SCN column, changes the scan period.

LBL - In the LBL column, changes the display period of the OSD label showing which computer is currently accessed.

T/O - When password protection is activated you can automatically disable the Management keyboard, mouse and screen after a preset time of non-use. Set this Timeout period in the T/O column.

To set the above periods:

1. On the desired line press Tab to jump to the desired column.
2. Place the cursor over one of the 3 digits and type a new number. Enter a leading zero where necessary. For example, type **0 4 0** for 40 seconds.

Typing **9 9 9** in the LBL column displays the label continuously. Typing **0 0 0** – the label will not appear.

Time Settings

	NAME	SCN	LBL	T / O
0 1	COMPUTER	0 3 0	0 3 0	0 3 0
0 2	COMPUTER	0 3 0	0 3 0	0 3 0
0 3	SWITCH	0 3 0	0 3 0	0 3 0
0 4	COMPUTER	0 3 0	0 3 0	0 3 0
0 5	COMPUTER	0 3 0	0 3 0	0 3 0
0 6	COMPUTER	0 3 0	0 3 0	0 3 0
0 7	COMPUTER	0 3 0	0 3 0	0 3 0
0 8	COMPUTER	0 3 0	0 3 0	0 3 0

Typing **9 9 9** in the T/O column disables the Timeout function. Typing **0 0 0** – the Timeout function works immediately. We recommend a T/O setting of at least 10 seconds.

Typing **9 9 9** in the SCN column displays the screen for 999 seconds. Typing **0 0 0** – the computer screen is skipped.

Users

In the Settings window navigate to the Users line and press **Enter**. The Users Settings window appears.

Turn on the Security feature (under OSD Settings) to configure any Users Settings.

There are 3 different access levels. These are:
Y – Full access to a particular computer. Plus access to the **F4**, **F5** and **F6** OSD functions
V – Viewing access only, to a particular computer (No keyboard/mouse functionality)
N – No access to a particular computer – A TIMEOUT label appears if access is attempted

USERS SETTINGS

		USERS						
		1	2	3	4	5	6	
0 1	COMPUTER	0 1	Y	Y	Y	V	N	V
0 2	COMPUTER	0 2	V	V	Y	Y	N	V
0 3	SWITCH	0 3	Y	Y	Y	Y	Y	Y
0 4	COMPUTER	0 4	V	V	V	V	V	V
0 5	COMPUTER	0 5	N	N	Y	N	N	V
0 6	COMPUTER	0 6	V	V	N	N	N	V
0 7	COMPUTER	0 7	Y	Y	Y	Y	Y	Y
0 8	COMPUTER	0 8	Y	Y	Y	Y	Y	Y

To give a user the desired access level, navigate to the desired computer line and USER and toggle between the options using the space bar.

Security

In the Settings window navigate to the Security line and press **Enter**. The Security Settings window appears.

In the window above you can see the Name of the User, his password and the type of the password.

To change a user name or password you have to navigate to the desired line and column. Type a new user name or password. User authentication is done solely via the password. There is no security significance to the names.

SECURITY SETTINGS

NAME	PASSWORD	T
ADMINISTRATOR	ADMIN	A
SUPERVISOR	S	S
USER	1	U
USER	2	U
USER	3	U
USER	4	U
USER	5	U
USER	6	U

The OSD HELP window – F1

To access the HELP window press **F1**. The HELP window appears:

Please note! All the functions set out in the Help window are performed from the Main window. The Help window is merely a reminder of the hotkeys and their functions.

Scanning computers– F4

Where necessary adjust the scan time in the Time Settings window, see above.

To activate scanning:

Press the Hot Key twice to open the OSD.

Press **F4**. Your screen displays each active computer sequentially, with the Scan label appearing in the top left corner.

Press **F4** to deactivate scanning:

Tuning – F5

You can tune the image of any remote computer screen from the Select Computer window.

To adjust the screen image:

Navigate to the remote computer you wish to adjust.

Press **F5**. The screen image of the selected computer appears, together with the Image Tuning label.

Adjust the image by using the Right and Left Arrow keys, when the image is satisfactory, press **Esc**.

Note! Picture quality is relative to distance. The further away a remote computer is from the SCOUTutp, the lower the image quality, and the more tuning needed. Place the higher resolution computers closer to the main unit.

Moving the label – F6

Position the OSD label anywhere on the screen.

To position the OSD label from the Main window, navigate to the desired computer using the Up and Down arrow keys. Press **F6**. The selected screen image and Identification label will appear. Use the arrow keys to move the label to the desired position. Press **Esc** to save and exit.

Using the Control software

As an alternative to the OSD you can operate the SCOUTutp system with the Control software located on the Documentation CD. With the OSD you operate the system and view the computer screens on the same monitor. The Control software requires 2 monitors 1 for the software and 1 to view the computer screens.

With the Control software you can:

- View computers
- Edit OSD Settings
- Save configurations for future use
- Read and write configurations to the SCOUTutp Switch

Control software system requirements

Pentium 166 or higher computer, 16Mb RAM, Windows 98 and later, a free Serial port

Connecting the serial download cable

To run the software, connect the serial cable to the computer containing the software, and to the SCOUTutp.

Note! The system must be fully connected BEFORE running the Control software. Failure to connect the system first will lead to the software working in demo mode.

To install the software:

Insert and start the Documentation CD.



- Choose SCOUTutp RS232 Control. The SCOUTutp RS232 Control window appears.
- Choose Install SCOUTutp Control Software. Once installed, a shortcut icon appears on the Desktop.
- Double-click the icon to run the software. Or choose Start / Programs / SCOUTutp Control / SCOUTutp Control.
- To run the software from the CD:
- Choose Run SCOUTutp switch Control Software from CD.



If the Security feature is activated, the software requires a password.

Selecting a Com port (Serial port)

During the Setup process you will be prompted to choose a Com port. Choose the Com port to which the serial download cable is connected. Failure to select the correct Com port will result in the software running in demo mode. Once Setup is complete the Control window appears.

Computer icons

Icon	Meaning
	Computer is connected and switched on
	Computer is switched off or unconnected

Icon	Meaning
	Computer that you are presently connected to
	Connected and switched on computer with a Local Workstation attached and presently being used locally. After remaining idle for the Timeout period, it changes to yellow .

When you first open the Control window the software automatically gets the status of the system, including the security access Settings.

Communication Error

If a Communication Error box appears when trying to scan the system, check that:
The Serial download cable is connected to the computer's and SCOUTutp IP Manager's serial ports.
The Com Port Settings in Options / Com Port are set correctly. After changing the Com port exit and re-start the Control software.

The View menu

From the View menu choose one of the following:
-All computers, or only active switched on computers.
-The Legend
-The toolbar

Selecting a computer

To select a computer:
Click on the computers icon. The system switches to that computer. The connected icon appears with a red background. Control and monitor the selected computer from the keyboard and mouse connected to the SCOUTutp.

The toolbar buttons

The toolbar buttons are explained below.

Get Status

If for whatever reason there is a break in communication between the Control software and the system, click "Get Status" to get the current status of the computers in system. The system automatically updates the status before every switch.

Read Configuration

To see the current Settings of the entire system (names, scan Settings etc.) click "Read Configuration". All current Settings are received. You view the computer Settings from the Control window and other Settings from the Edit menu – discussed below.

Write Configuration

With the Control software you can make changes to all OSD Settings. You can then save these configurations in a file to use in the future by selecting Save or Save As from the File menu.

Note! Save or Save As, will have no affect on the OSD.

To change the OSD Settings you must press "Write Configuration" or choose Write Configuration from the File menu after making changes. The changes will then be sent to the SCOUTutp system Manager, and the OSD will reflect these changes.

Renaming a computer

To rename a computer:

- Type the new name in the box below the computer icon.
- Click "Write Configuration" to save the settings on the OSD.

Or click Save or Save As, from the File menu to save the changes in a file and not alter the OSD names.

The Edit menu

You can edit all OSD fields. Edit the following from the Edit menu.
Logon
Passwords
Settings

Password protection

When the SCOUTutp system is password protected, the Control software behaves in exactly the same way as the OSD. You must type in the required password to access the Control software. The access you gain depends on the security status –.

To change the security access, close and reopen the Control software, and type in the different passwords.

Administrator (Status A)

The Administrator can:

- Set and modify all Passwords and security profiles
- Fully access any computer
- Use all functions

Supervisor (Status S)

The Supervisor can:

- Fully access any computer
- Scan computers

User (Status U)

There are 6 different Users in the SCOUTutp system. Each User has a Profile that defines the access level to different computers. There are 3 different access levels. These are:

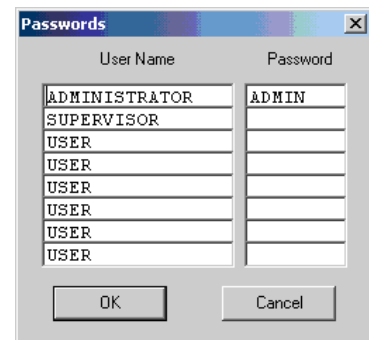
- Y – Full access to a particular computer
- V – Viewing access only, to a particular computer (No keyboard/mouse functionality)
- N – No access to a particular computer

By default the User Profile Settings are full access.

Logon and Passwords

You can make the following changes:

1. Edit the Logon and Passwords by choosing them from the Edit menu. See figures below.
2. Make the desired changes.
3. Click OK.



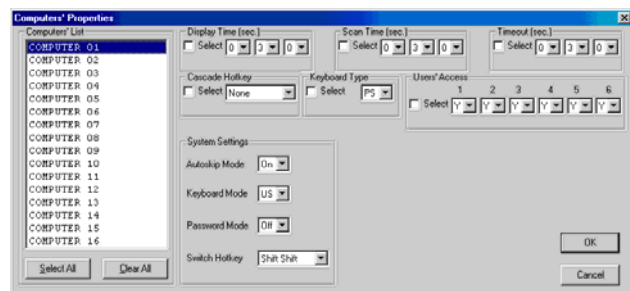
Settings

Choose Settings from the Edit menu. The Computers' Properties box appears.

Here you can edit all the data that can be edited in the OSD.

To edit a setting:

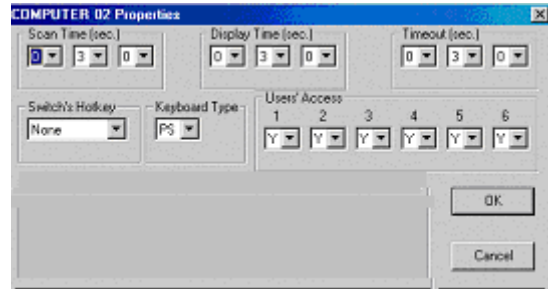
1. In the Computer List, select the desired computer or group of computers.
2. Make the desired changes.
3. Check the Select box next to the changed setting.
4. Click OK.
5. To activate the changes press write configuration and then read configuration.



Single computer Settings

To see all the Settings of a single computer, right click the computer icon. The Settings appear as in the figure below.

Note! There is no Select box to check.



Loading a saved configuration

To load a saved configuration:
From the File menu choose Open.

Note: All changes done with the Control software are only reflected in the OSD AFTER pressing "Write Configuration"

The factory default Settings

To revert to the factory default Settings:
On the toolbar press "Set Default"
There is no need to press "Write Configuration".

Upgrading the SCOUTutp firmware

With the SCOUTutp Update software program you can upgrade the firmware for the OSD, the Manager and the Adaptors
SCOUTutp Update enables you to add new features and fix bugs in a quick and efficient manner.
You can install the SCOUTutp Switch Update on any computer, even one not part of the SCOUTutp system.
The SCOUTutp Update software and latest firmware is on the Documentation CD, and on the Daxten website www.daxten.com

System requirements for the SCOUTutp Update software

Pentium 166 or higher, 16 MB RAM and 10 MB free Hard Drive space.
Free Serial port. Windows 98 and later.

Starting and configuring the SCOUTutp Update

1. Start the SCOUTutp Update software. The SCOUTutp Update window appears

The table shown explains the functions of the buttons and boxes in the SCOUTutp Switch Update window.
2. From the Options menu choose Com Port. The Com Port box appears.
3. Choose an available Com Port and click OK.

Button or Box	Function
Select	Selects all Adaptors
Unselect	Unselects selected Adaptors
Start	Starts firmware download
F/W	Displays the firmware version number
H/W	Displays the hardware version number
Cancel	Cancel selected function
10:06	System time
Status	Displays download status
File	Name of Update file

Note! The Serial download cable must be connected to the selected Serial port.

Verifying the version numbers

Before upgrading the firmware, you must first verify which firmware and hardware versions you have.

The OSD version number

To verify the OSD version number:

1. Open the SCOUTutp Switch Update program.
2. In the Switch Unit box, check the OSD option.
3. Click **F/W Version** the version number appears in the Switch box.

The H/W Version button is greyed out, as there is no hardware relevant to the OSD.

The SCOUTutp Manager version number

To verify the SCOUTutp version number:

1. Open the SCOUTutp Switch Update program.
2. In the Switch Unit box, check the SCOUTutp Manager option.
3. Click **F/W Version** the firmware version number appears in the Switch Unit box.
4. Click **H/W Version** the hardware version number appears in the Switch Unit box.

Verifying the ADAPTOR version number

Before you can check a ADAPTOR, you must uncheck the Switch Unit box options.

To verify the ADAPTOR version number:

1. Open the SCOUTutp Switch Update program.
2. Check one or more or all of the Adaptors.
3. Click **F/W Version** the firmware version number appears after the ADAPTOR number.
4. Click **H/W Version** the hardware version number appears after the ADAPTOR number.

When "Not responding" appears, there is no computer connected, or it is switched off.

Updating the firmware

Warning! Never switch off any computer connected to the SCOUTutp system during the updating process.

To update the firmware:

1. Open the SCOUTutp Switch Update program.
2. In the SCOUTutp Switch Update window, check the appropriate option in the Switch Unit box or the desired ADAPTOR.
3. From the File menu, choose Open. The Open box appears
4. Navigate to the folder that contains the firmware update file. You may only see the files that match the file selection mask.
5. Open the file.
6. Click Start. The SCOUTutp Switch Update flashes the firmware. On completion the firmware version number appears.
7. Check that the updated version number is correct by pressing **F/W Version**.

Firmware Update generates one log file per session that displays a chronological list of actions. You can read the log file in any ASCII text editor. The log file is located in the Windows directory.

Reset

Reset the software for the SCOUTutp Manager or Adaptors when for example the unit hangs or when the mouse fails to work properly. Resetting is done via the Serial port, and avoids the need to shut down the computer.

Note! The Reset function does not affect the parameter settings of the unit.

Resetting the Switch or ADAPTOR units

To reset the Switch or ADAPTOR units:

1. For the Switch, check the SCOUTutp Switch option in the Switch Unit box.
2. For the Adaptors, check one or more Adaptors in the ADAPTOR Units box.
3. From the Options menu choose Advanced / Reset. The units reset. The system should now be operational.

Troubleshooting tips

When using Firmware Update software you may sometimes get a Communication Error message.

When updating a unit and a Communication Error message appears, do the following:

1. Check that the Serial download cable's connector is connected to the Switch's Communication port.
2. Check that the Serial download cable's DB9F connector is connected to the DB9M Serial port on the CPU's rear panel.
3. Restart the download process.

Power failure

If the power fails while updating the SCOUTutp firmware, do the following:

If the power fails during the firmware update of the Switch, a Communication Error message appears. Simply resume the firmware update by opening the folder that contains the firmware update file and continue from there.

If the electricity fails during the firmware update of the cables a Not Responding or Upgrade Error message appears. Restart the upgrade from the beginning.

USB / SUN Combo keys

The connected PS/2 keyboard does not have a special SUN keypad to perform special functions in the SUN Operating System environment. So when a USB or SUN ADAPTOR is connected to a SUN computer, the ADAPTOR emulates these SUN keys using a set of key combinations called Combo keys. See the table below.

SUN key	Combo key	SUN key	Combo key
Stop	Left Ctrl + Alt + F1	Help	Left Ctrl + Alt + F11
Props	Left Ctrl + Alt + F3	Compose	Left Ctrl + Alt + Keypad *
Front	Left Ctrl + Alt + F5	Crescent	Scroll Lock
Open	Left Ctrl + Alt + F7	Volume Up	Left Ctrl + Alt + Keypad -
Find	Left Ctrl + Alt + F9	Volume Down	Left Ctrl + Alt + Keypad +
Again	Left Ctrl + Alt + F2	Mute	Left Ctrl + Alt + F12
Undo	Left Ctrl + Alt + F4	Sun Left ◊ key	Left Alt key
Copy	Left Ctrl + Alt + F6	Sun Right ◊ key	Right Alt key
Paste	Left Ctrl + Alt + F8	Alt-Graph	Right Alt or Alt Gr
Cut	Left Ctrl + Alt + F10	Stop A	Left Ctrl + Alt + 1

USB / Mac Settings (On the USB ADAPTOR)



To access any of the following Special Settings:

1. Install the USB ADAPTOR.
2. Attach a PS/2 keyboard to Manager Unit or to Switch Unit
3. Open a text-editing program (like Notepad or SimpleText)
4. Hold down the **Esc** key, tap the **S** key, and **release** the **Esc** key.
5. The USB-to-PS/2 conversion chip version and settings will be displayed: "v2.1[wp]" means you have version 2.1 and the "**W**" and "**P**" settings are active.
6. Using **Esc** and the appropriate letter, you may change settings as desired and the new configuration will be displayed in the text editor.

NOTE: The USB ADAPTOR stores these settings in their own internal memory so even if you unplug, power down, or move them to another computer, the settings will not be lost.

The following table illustrates how the W and R settings change key assignments on a PS/2 keyboard.

Mac Equivalents

Settings	PS/2 Keyboard Layout			
	Left  key	Left Alt	Right Alt	Right  key
None (Mac default)	Alt/Option	Command	Command	Alt/Option
W (PC default)	Command	Alt/Option	Alt/Option	Command
WR	Alt/Option	Command	Alt/Option	Command
R	Command	Alt/Option	Command	Alt/Option

More Special Settings

Esc A	Resets USB ADAPTOR to Mac default (QP).
Esc E	Stops the normal USB power-off feature. Set this if you want to use the attached mouse and keyboard to wake up the computer. After executing the [Esc E] command, unplug and re-plug the USB ADAPTOR from the USB port or restart your computer to make this Special Setting take effect.
Esc O	Resets USB ADAPTOR to PC default (WP).
Esc P	Scandinavian "*" key code conversion changes the scan code for the < > (pipe character) key. This affects UNIX workstations and some foreign keyboards.
Esc Q	Sets the mouse speed to a faster mode.
Esc T	Allows the operating system to control the "Num Lock" indicator.
Esc Y	Sets the <Scroll Lock> key as a USB scroll lock. (Default mode uses <Scroll Lock> as a Mac "Power off" key).

Cascading the SCOUTutp.

The SCOUTutp can be cascaded by attaching another SCOUTutp to it. A PS/2 Adaptor must be connected to the console port of the unit being attached (the slave unit) and then connecting the PS/2 Adaptor via a UTP cable to the master unit's computer port.

Each port of the master SCOUTutp can be connected to a slave SCOUTutp unit, enabling a total of 256 computers to be controlled from a single console

Service Information

Technical Support

If you cannot determine the nature of a problem, please call Daxten and ask for Technical Support. If possible, call from a phone located near the unit, as we may be able to solve your problem directly over the phone. If we cannot solve your problem, and determine that the fault is in the unit, we will issue a Return Material Authorisation (RMA) number that must appear on the outside of all returned products. The unit should be double-packed in the original container, insured, and shipped to the address given to you by our Technical Support representative. The Technical Support offices are found on the back of this manual.

Limited Warranty

Daxten warrants to the end user that this product is and will be free from defects in materials and workmanship for a period of 24 months from the date of purchase. If during the warranty period the product should fail, the purchaser must promptly call Daxten for a RETURN MATERIALS AUTHORIZATION (RMA) number. Make sure that the RMA number appears on the packing slip, proof of purchase, AND ON THE OUTSIDE OF EACH SHIPPING CARTON. Unauthorized returns or collect shipments will be refused.

Ship prepaid to the Daxten office (see back page) where you purchased your product. The above limited warranty is voided by occurrence of any of the following events, upon which the product is provided as is, with all faults, and with all disclaimers of warranty identified below:

1. If non-Daxten approved power supply or cabling is attached to the product.
2. If defect or malfunction was caused by abuse, mishandling, unauthorized repair, or use other than intended.
3. If unauthorized modifications were made to product.
4. If unreported damages occurred in any shipment of the product.
5. If damages were due to or caused by equipment or software not provided by Daxten.
6. If the product is used with non-grounded or incorrectly polarized AC power.
7. If the product is used in contradiction to any instruction provided by any User Guide or Instruction Sheet provided to you or with the product.

EXCEPT AS SPECIFICALLY PROVIDED ABOVE AND TO THE MAXIMUM EXTENT ALLOWED BY LAW, DAXTEN DISCLAIMS ALL WARRANTIES AND CONDITIONS WHETHER EXPRESS, IMPLIED, OR STATUTORY AS TO ANY MATTER WHATSOEVER INCLUDING, WITHOUT LIMITATION, TITLE, NON-INFRINGEMENT, CONDITION, MERCHANTABILITY OR FITNESS FOR ANY PARTICULAR OR INTENDED PURPOSE.

EXCEPT AS EXPRESSLY PROVIDED ABOVE AND TO THE MAXIMUM EXTENT ALLOWED BY LAW, DAXTEN SHALL NOT BE LIABLE FOR ANY SPECIAL, INDIRECT OR CONSEQUENTIAL DAMAGES (INCLUDING WITHOUT LIMITATION, LOSS OF PROFIT, LOSS OF BUSINESS, LOSS OF INFORMATION, FINANCIAL LOSS, PERSONAL INJURY, LOSS OF PRIVACY OR NEGLIGENCE) WHICH MAY BE CAUSED BY OR RELATED TO, DIRECTLY OR INDIRECTLY, THE USE OF A PRODUCT OR SERVICE, THE INABILITY TO USE A PRODUCT OR SERVICE, INADEQUACY OF A PRODUCT OR SERVICE FOR ANY PURPOSE OR USE THEREOF OR BY ANY DEFECT OR DEFICIENCY THEREIN EVEN IF DAXTEN OR AN AUTHORIZED DAXTEN DEALER HAS BEEN ADVISED OF THE POSSIBILITY OF SUCH DAMAGES OR LOSSES.

Waste Electrical and Electronic Equipment (WEEE)



Within the European Union this symbol indicates that this product should not be disposed in household waste. It should be deposited at an appropriate facility to enable recovery and recycling. For information on how to recycle this product, please check with the reseller of the product that replaces this product "Take Back" or the original seller of this product.





DAXTEN®

THE BRAINS BEHIND
KVM SWITCHING & SHARING

www.daxten.com

Ireland

Bay 21
Free Zone West
Shannon, Co. Clare
info.ie@daxten.com
www.daxten.ie
Tel: +353 (0) 61 23 4000
Fax: +353 (0) 61 23 4099



Österreich

Künstlergasse 11/4
A-1150 Wien
info.at@daxten.com
www.daxten.at
Tel: +43 (0)1 879 77 65
Fax: +43 (0)1 879 77 65 30



España

C/Florian Rey, 8
50002 Zaragoza
info.es@daxten.com
www.daxten.com.es
Tel: +34 902 197 662
Fax: +34 976 201 633



Worldwide

info.eu@daxten.com
www.daxten.eu



USA

info.us@daxten.com
www.daxten.us



Deutschland

Salzufer 16, Geb. B
10587 Berlin
info.de@daxten.com
www.daxten.de
Tel: +49 (0) 30 8595 37-0
Fax: +49 (0) 30 8595 37-99



Sweden

info.se@daxten.com
www.daxten.se



Denmark

info.dk@daxten.com
www.daxten.dk



United Kingdom

5 Manhattan Business Park
Westgate
London W5 1UP
info.uk@daxten.com
www.daxten.co.uk
Tel: +44 (0) 20 8991 6200
Fax: +44 (0) 20 8991 6299



Schweiz

Badenerstrasse 701
8048 Zürich
info.ch@daxten.com
www.daxten.ch
Tel: +41 (0) 43 321 73 93
Fax: +41 (0) 43 321 73 94



France

44, rue du Général Leclerc
91230 Montgeron
info.fr@daxten.com
www.daxten.fr
Tel: +33 (01) 69 40 04 05
Fax: +33 (01) 69 03 75 19

