

DRAFT 10/23/15

# ISAAC MIZRAHI

GETTING STARTED (EN)

GETTING STARTED (FR)

ENGINEERED BY HP

“ Style starts  
with smart. ”

— ISAAC MIZRAHI



## TABLE OF CONTENTS TABLE OF CONTENTS (FR)

BOX CONTENTS / BOX CONTENTS ..... 3

### ENGLISH

Getting Started ..... 4

Navigating the Watch ..... 10

Watch Functions ..... 12

Customizing Notifications ..... 16

Reconnecting the Watch with Your Phone ..... 18

Removing and Replacing the Strap ..... 19

Warranty and Support ..... 20

### FRENCH

Getting Started ..... 4

Navigating the Watch ..... 10

Watch Functions ..... 12

Customizing Notifications ..... 16

Reconnecting the Watch with Your Phone ..... 18

Removing and Replacing the Strap ..... 19

Warranty and Support ..... 20

REGULATORY NOTICES / REGULATORY NOTICES ..... XX

## BOX CONTENTS BOX CONTENTS (FR)



## GETTING STARTED

- 1 SET THE TIME.
  - A. Remove the plastic spacer from the crown.
  - B. Gently pull crown out to its outermost position **2**.
  - C. Rotate the crown to the correct time.
  - D. Press the crown to return it to its normal position **1**.

**NOTE:** If you are storing the watch make sure to pull the crown out to its outermost position **2**.



**WARNING:** Do not attempt to change the batteries yourself. Opening the watch case will void your warranty. Using an incorrect battery may cause the watch to overheat or catch fire.

- 2 CHARGE THE WATCH.

Charge the watch for at least two hours **1**, **2**, **3**.

**NOTE:** The first time you charge the watch, the display might be blank. After you set up the watch, the charging icon ⚡ is displayed while the watch charges.

Each time you charge your watch, disconnect the charger from power and thoroughly wipe the charger and watch contact pins with a soft, lint-free cloth before connecting the watch to the charger and the charger to power. If needed, you may dampen the cloth with a small amount of isopropyl rubbing alcohol. Never use soap or any chemicals other than isopropyl rubbing alcohol to clean the contact pins for the watch or charger.



## GETTING STARTED

- 3** ACTIVATE THE WATCH.  
To turn on the watch, press and hold the top watch button until the Setup screen displays.



- 4** INSTALL THE PHONE APP.  
The Isaac Mizrahi Smartwatch phone app connects your watch to your phone. Use the app to control the information and notifications that are displayed on your watch. You can also find style advice from Isaac inside the app.

**NOTE:** Your phone must have either iOS 8 or higher or Android 4.4 operating system or higher.

- A. On your phone, go to [watches.hp.com](http://watches.hp.com) and select your watch.
- B. Download and install the Isaac Mizrahi Smartwatch app on your phone.

## GETTING STARTED

### 5 CONNECT YOUR WATCH TO YOUR PHONE.

- A. Make sure that your phone's Bluetooth® is turned on. See your phone documentation for instructions.

**NOTE:** If you connect the watch to the phone using only your phone's Bluetooth settings, you cannot configure the watch. You must connect the watch using the phone app.

- ~~B. Open the Isaac Mizrahi Smartwatch phone app on your phone, and then follow the on-screen instructions to set up your account.~~

- C. The phone app automatically searches for nearby watches. Press the top watch button **1** so that the Setup screen is displayed ~~and the app can find your watch.~~

- D. When the phone app finds your watch, select **Connect Watch**. When prompted, press the top watch button **1** again and enter the PIN displayed on your watch.



### 6 CONFIGURE YOUR WATCH USING THE PHONE APP.

- A. In the phone app, enable notification permissions. You must enable permissions to use the features of your watch. Notification permissions allow you to push any notifications from a third-party app, such as Facebook or Twitter, to the watch. See your phone documentation for instructions for enabling notifications.
- B. In the phone app, select **Style, Watch Issac, Activity, Notifications, My Watch, or Help**. **Notifications** also controls vibration notification settings. See Customizing Notifications on page 16 for more information.

You have now completed your watch setup. The rest of this guide provides more information about using your watch and customizing it using the phone app.

## NAVIGATING THE WATCH

### DISPLAYING THE WATCH STATUS

To display the watch status, press and hold button **2** for three seconds. The status dismisses automatically after five seconds.

- Bluetooth status icon**  
Appears when Bluetooth is disconnected.
- Charging status icon**  
Appears when the watch is connected to power.
- Battery status icon**  
Displays remaining battery charge for the battery that powers the digital functions of your watch.



### TURNING BLUETOOTH ON OR OFF

To turn Bluetooth on or off, press and release both buttons at the same time.

### NAVIGATING BETWEEN WORLD CLOCK AND ACTIVITY TRACKER

To navigate between World Clock and Activity Tracker, press button **1**. To display the time in your next selected city or view yesterday's steps in Activity Tracker, press button **2**.

### DISMISSING NOTIFICATIONS

To dismiss notifications or to decline a call, press button **1**. Press and hold button **1** to dismiss all notifications.

### TURNING AIRPLANE MODE ON OR OFF

To turn airplane mode on or off, press and release both buttons at the same time.

### RESETTING TO FACTORY SETTINGS

To reset to factory settings, press and hold button **2** while pressing button **1** three times. Press button **2** to confirm.

## WATCH FUNCTIONS



### Incoming Call

1 (678) 555-1234

#### INCOMING CALL

When you have an incoming call, the caller's name is displayed. If the caller is not in your contacts, their phone number is displayed instead. Press button **1** to decline the call.

### Messages

Aditi Mukherji  
Can you pick up ▼

#### TEXT MESSAGE

When you receive a text message, the sender's name and message are displayed. Press button **2** to scroll and press button **1** to dismiss the text.

### Goal Achieved

5,000 Steps

#### ACTIVITY TRACKER

Activity Tracker keeps track of your daily steps and your progress to your daily goal. To check today's steps, press button **1**, then review yesterday's steps by pressing button **2**.

A notification is displayed when you reach your daily goal. Use the app to check your progress over the week or the month.



## WATCH FUNCTIONS



New York  
**4:51** PM  
-- --

### WORLD CLOCK

World Clock syncs automatically with your phone. In the app, you can select other time zones to be displayed and change the order in which the cities are displayed on the watch. Press button **2** to scroll through your selected cities.

Event Reminder  
**11:00** AM  
Staff Meeting

### CALENDAR REMINDERS

The watch syncs with the calendar on your phone to notify you of upcoming appointments.

Press button **2** to scroll for more information, such as meeting time and location. Press button **1** to dismiss the notification.

Low Battery  
Battery at 10%

### DIGITAL BATTERY STATUS

When the battery that powers the digital functions of your watch has less than a 20% charge, there is a notification. There is also a notification when the digital watch battery has less than a 10% charge.

## CUSTOMIZING NOTIFICATIONS

### ON-SCREEN NOTIFICATIONS

To enable, disable, or change the notifications that appear on the watch screen:

1. In the app, select **Notifications**.
2. Tap the button next to the notification to toggle that notification on or off. Tap **Edit** to enable or disable notifications from specific third-party apps.  
**NOTE:** Most third-party apps are available in the Other category.
3. To enable notifications from a third-party app, select it. To disable notifications from a third-party app, clear it.

### NOTIFICATION VIBRATIONS






In addition to on-screen messages, your watch vibrates to notify you of events. Notification vibrations are either high or low priority. You can change the priority of most notifications. High-priority notifications use a longer vibration than low-priority notifications.

To enable, disable, or change the priority of notification vibrations:

1. In the app, select **Notifications**.
2. Tap the button next to the notification to toggle that notification on or off. Tap **Edit** to change the default vibration priority to high or low.


**NOTE:** You can enable a notification vibration for any third-party app. All notification vibrations not enabled by default are set automatically to low priority.

The following table describes the default vibration patterns for notifications:

NOTIFICATION	VIBRATION PATTERN	DEFAULT
Incoming call		On
Text message		On
Activity goal reached		On
Calendar reminder		On
Email		Off

KEY ● = Short pulse  = Long pulse

## RECONNECTING THE WATCH WITH YOUR PHONE

If the phone and watch are disconnected, the watch displays the Bluetooth icon .

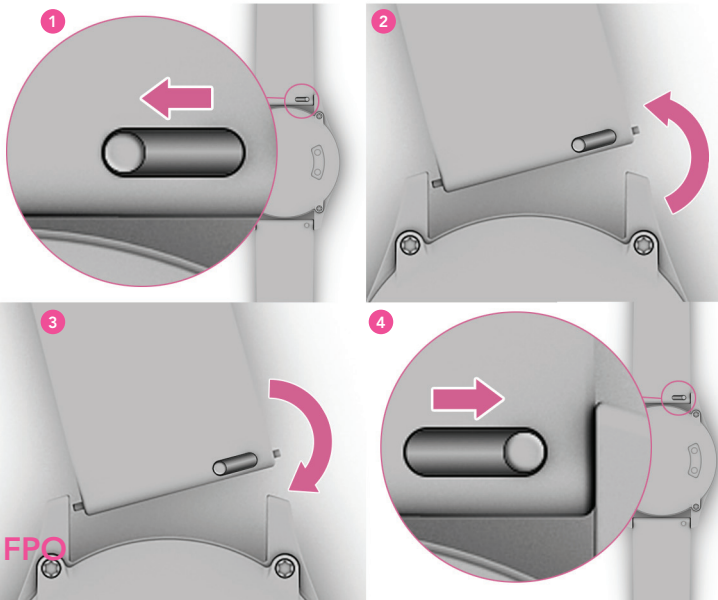
To reconnect:

1. Make sure that your phone's Bluetooth is turned on. See your phone documentation for instructions.
2. Open the Isaac Mizrahi Smartwatch app on your phone.
3. Press any watch button to activate pairing mode.
4. In the phone app, follow the on-screen instructions to reconnect the watch to your phone.



## REMOVING AND REPLACING THE STRAP

You can purchase replacement straps for your Isaac Mizrahi Smartwatch in five colors.



## WARRANTY AND SUPPORT

For warranty and support information, go to [watches.hp.com](http://watches.hp.com). This site contains additional online documentation as well as accessories and spare parts information.

“ Make an entrance.  
Sometimes, you just need  
to wear sparkles.  
All sparkles. ”  
– ISAAC MIZRAHI

## REGULATORY NOTICES

### FEDERAL COMMUNICATIONS COMMISSION NOTICE

This equipment has been tested and found to comply with the limits for a Class B digital device, pursuant to Part 15 of the FCC Rules. These limits are designed to provide reasonable protection against harmful interference in a residential installation. This equipment generates, uses, and can radiate radio frequency energy and, if not installed and used in accordance with the instructions, may cause harmful interference to radio communications. However, there is no guarantee that interference will not occur in a particular installation.

If this equipment does cause harmful interference to radio or television reception, which can be determined by turning the equipment off and on, the user is encouraged to try to correct the interference by one or more of the following measures:

- Reorient or relocate the receiving antenna.
- Increase the separation between the equipment and receiver.
- Connect the equipment to an outlet on a circuit different from that to which the receiver is connected.
- Consult the dealer or an experienced radio or television technician for help.

This device complies with part 15 of the FCC Rules. Operation is subject to the following two conditions: (1) This device may not cause harmful interference, and (2) this device must accept any interference received, including interference that may cause undesired operation.

If you have questions about the product that are not related to this declaration, write to: HP Inc., 1501 Page Mill Road, Palo Alto, CA 94304 or call HP at 650-857-1501.

For questions regarding this FCC declaration, write to: HP Inc., 1501 Page Mill Road, Palo Alto, CA 94304 or call HP at 650-857-1501.

To identify your product, refer to the part, series, or model number located on the product.

### MODIFICATIONS

The FCC requires the user to be notified that any changes or modifications made to this device that are not expressly approved by HP may void the user's authority to operate the equipment.

### CABLES

To maintain compliance with FCC Rules and Regulations, connections to this device must be made with shielded cables having metallic RFI/EMI connector hoods.

### CANADA NOTICES

This Class B digital apparatus meets all requirements of the Canadian Interference-Causing Equipment Regulations CAN ICES-3(B)/NMB-3(B). If this device has WLAN or Bluetooth capability, the device complies with Industry Canada license-exempt RSS standard(s). Operation is subject to the following two conditions: (1) this device may not cause interference, and (2) this device must accept any interference, including interference that may cause undesired operation of the device.

### AVIS CANADIEN

Ce dispositif numérique de Classe B répond aux exigences de la réglementation du Canada relative aux équipements causant des interférences CAN ICES-3(B)/NMB-3(B). Si ce dispositif est doté de fonctionnalités de réseau sans fil ou Bluetooth, il est conforme aux normes d'exemption de licence RSS d'Industrie Canada. Son fonctionnement est assujéti aux deux conditions suivantes : 1) Ce dispositif ne doit causer aucune interférence dangereuse, et 2) ce dispositif doit accepter toute interférence reçue, y compris les interférences pouvant provoquer un fonctionnement indésirable.

### CHEMICAL SUBSTANCES

HP is committed to providing our customers with information about the chemical substances in our products as needed to comply with legal requirements such as REACH (Regulation EC No1907/2006 of the European Parliament and the Council). A chemical information report for this product can be found at [www.hp.com/go/reach](http://www.hp.com/go/reach).

### SUSTANCIAS QUÍMICAS


HP se compromete con la tarea de brindar a nuestros clientes información acerca de los productos químicos incluidos en nuestros productos necesaria para cumplir con requisitos legales como REACH (Regulación EC N.º 1907/2006 del Parlamento Europeo y del Consejo). Podrá encontrar un informe con los datos químicos relacionados con este producto en [www.hp.com/go/reach](http://www.hp.com/go/reach).

### SUBSTANCES CHIMIQUES

HP s'engage à fournir à ses clients des informations concernant les substances chimiques contenues dans ses produits, conformément aux dispositions légales telles que REACH (Règlement CE n° 1907/2006 du Parlement Européen et du Conseil de l'Union Européenne). Un rapport d'informations sur les substances chimiques de ce produit est disponible à l'adresse [www.hp.com/go/reach](http://www.hp.com/go/reach).

### EUROPEAN UNION REGULATORY NOTICES

#### DECLARATION OF CONFORMITY

 Hereby, Isaac Mizrahi Smartwatch declares that this equipment: Isaac Mizrahi Smartwatch is in compliance with the essential requirements and other relevant provisions of Directive 1999/5/EC. The full Declaration of Conformity can be found at the following web site: URL. For regulatory matters the manufacturer, HP Inc., can be contacted at: HP, HQ-TRE, 71025 Boeblingen, Germany.

For regulatory matters the importer, HP Inc., can be contacted at: HP, HQ-TRE, 71025 Boeblingen, Germany.

#### BATTERY NOTICES

The battery(ies) in this product cannot be easily replaced by users themselves. Removing or replacing the battery could affect your warranty coverage. If a battery is no longer holding a charge, contact support.

When a battery has reached the end of its useful life, do not dispose of the battery in general household waste. Follow the local laws and regulations in your area for battery disposal.

### ELECTRONIC HARDWARE AND BATTERY RECYCLING

HP encourage customers to recycle used electronic hardware and rechargeable batteries. For more information about recycling programs, see the HP Web site at [www.hp.com/recycle](http://www.hp.com/recycle).

#### DISPOSAL OF WASTE EQUIPMENT BY USERS



This symbol means do not dispose of your product with your other household waste. Instead, you should protect human health and the environment by handing over your waste equipment to a designated collection point for the recycling of waste electrical and electronic equipment. For more information, please contact your household waste disposal service or go to [www.hp.com/recycle](http://www.hp.com/recycle).

Copyright © 2015 HP Development Company, L.P.

Bluetooth is a trademark owned by its proprietor and used by HP Inc. under license.

The information contained herein is subject to change without notice. The only warranties for HP products and services are set forth in the express warranty statements accompanying such products and services. Nothing herein should be construed as constituting an additional warranty. HP shall not be liable for technical or editorial errors or omissions contained herein.

To order a printed copy of your warranty, go to <http://www.hp.com/go/orderdocuments>. Select your country or language, and then select Order. Enter your information in the form provided.

First Edition: October 2015

barcode here

The device meets the exemption from the routine evaluation limits in section 2.5 of RSS 102 and compliance with RSS-102 RSS-102 RF exposure, users can obtain Canadian information on RF exposure and compliance.

Le dispositif rencontre l'exemption des limites courantes d'évaluation dans la section 2.5 de RSS 102 et la conformité à l'exposition de RSS-102 rf, utilisateurs peut obtenir l'information canadienne sur l'exposition et la conformité de rf.

This transmitter must not be co-located or operating in conjunction with any other antenna or transmitter. This This equipment should be installed and operated with a minimum distance of less than millimeters between the radiator and your body.

Cet émetteur ne doit pas être Co-placé ou ne fonctionnant en même temps qu'aucune autre antenne ou émetteur. Cet équipement devrait être installé et actionné avec une distance moins de 5 millimètres entre le radiateur et votre corps.

FCC ID: O4GISAAC  
IC: 7666A-ISAAC  
Model: HSTNW-D03W