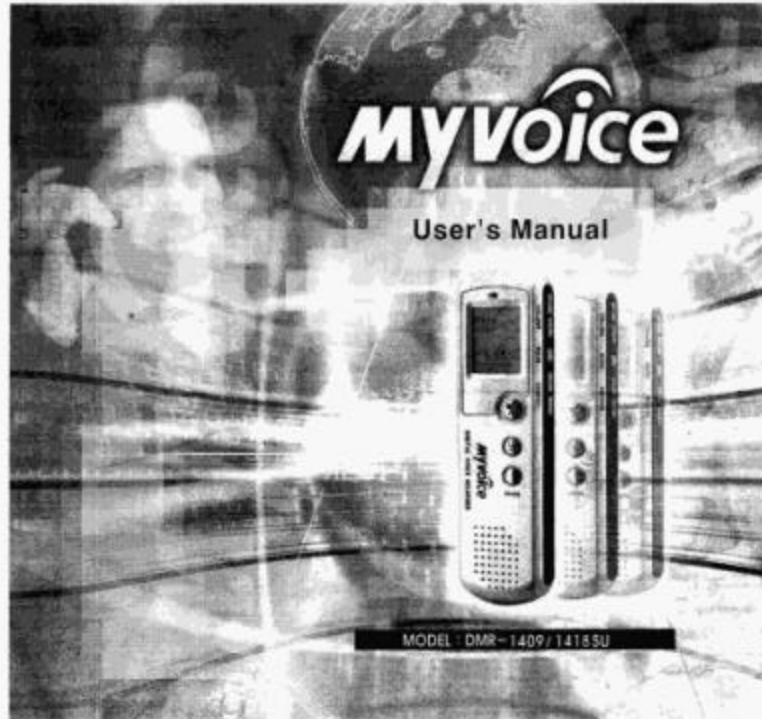


myvoice



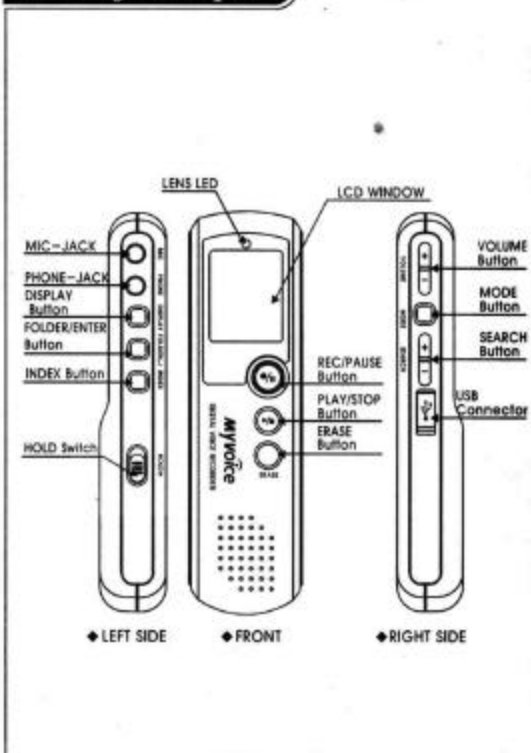
Contents

Features	1
Name of each part	2
Preparation for operating	4
- Installing the Batteries	4
- Setting the Clock	5
Operating Voice Recorder	6
- Recording Messages	6
- Convenient Function for Recording	8
- Playback Messages	10
- Convenient Function for Playback	11
- Erasing Messages	13
- Connecting with External Appliance	15
Other Functions	17
- Index Mark Function	17
- Starting Recording at a Desired Time	18
- Playback a Messages or an Alarm at a Desired Time	21
- Preventing Accidental Operation	24
- Password Function	25
- Selecting the Display Mode	26
- Selecting the Beep Sound	26
Precautions	27
- On Using	27
- On Power	28
- On Safety	28
Trouble shooting	29
Specification	31
Program Installation	32

Features

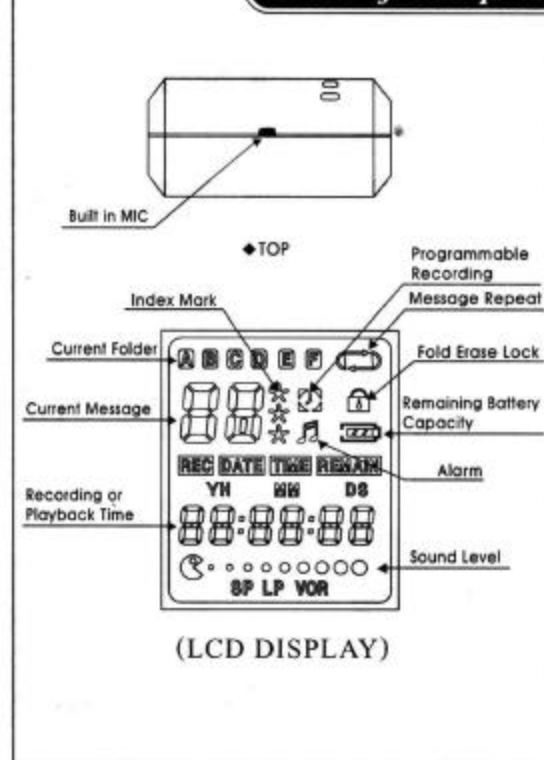
- ◆ **USB Interface**
To adopt USB standard, which is easy to set up and connect to your PC.
- ◆ **Folder & File**
Max. 99 voice recording files into each folder
(Max.297 or 594 recording files)
DMR-1209/18SU: 6 folders
- ◆ **Repeat & A-B Repeat function**
Can replay over and over as you choose interval A-B
- ◆ **VOR(Voice Operated Recording)**
Prevents unnecessary recording when there is no sound or voice
- ◆ **Alarm function**
You can start playback a desired message or an alarm on a desired date and time.
- ◆ **Timer recording function**
You can start recording automatically on a desired date and time.
- ◆ **Index function**
You can add an index at the desired point during recording to fast search during playback.
- ◆ **Intro Scan function**
To be available for playing 5 seconds of each message successively
- ◆ **Digital Volume control**
10 steps volume control function
- ◆ **E-mail function**
To be available for E-mailing voice files
- ◆ **External input/output connection**
To be available for mutual recording with another appliances
- ◆ **Password Function**
Prevent access the recorded message of another people.

Name of each part



2

Name of each part



3

Preparation for operating

● Installing the Batteries

- Slide and lift the battery compartment lid.
- Insert two LR03 (size AAA) alkaline batteries with correct polarity, and close the lid.

■ Notice

- The battery life may shorten depending on the operation of the unit.
- When replacing the batteries, be sure to replace both batteries with new ones.
- Do not charge dry batteries.
- When you are not going to use the unit for a long time, remove the batteries to prevent damage from battery leakage and corrosion.

4

Preparation for operating

● Setting the Clock

You need to set the clock to use the alarm or timer setting functions.
Clock setting display appears when you insert batteries for the first time.

- Press MENU button to enter the clock set-up mode.
- Display the "SU/N" on the screen and the "DATE" will blink.
- Press FF/REW button to select the digits of the year and press FOLDER/ENTER button to confirm. And then the month digits will blink.
- Press FF/REW button to select the digits of the month and press FOLDER/ENTER button to confirm. And then the day digits will blink.
- Press FF/REW button to select the digits of the day and press FOLDER/ENTER button to confirm. And then the hour digits will blink.
- Press FF/REW button to select the digits of the hour and press FOLDER/ENTER button to confirm. And then the minute digits will blink.
- Press FF/REW button to select the digits of the minute and press PLAY/STOP button to confirm. And then the setting has been completed.

- If you need to change the date after starting to use, press MENU button 7 times and restart from step 2.

5

Operating voice recorder

● Recording Messages

You can record up to 99 files in each of six folders. Since a newly recorded message is automatically added behind the last recorded message, you can start recording quickly without searching for the end of the last recording.

■ Notice

- Before making a long recording, be sure to insert new batteries and check the battery indicator.
- You can record the full time into one message within any folder.
- If the memory is exhausted or message number gets more than 99 messages in one folder, "FULL" will be displayed and recording will stop.

1. Press FOLDER/ENTER button repeatedly to display the folder in which you wish to record a message.
2. Point the MIC toward the sound source and press REC/PAUSE button.
Recording message will be added and recording will start.
3. To stop recording, press PLAY/STOP button.
 - The unit stops at the beginning of the current recording.
 - If you do not change the folder after you stop recording, the next time you record you will record in the same folder.

6

Operating voice recorder

4. To pause recording, press REC/PAUSE button during recording and then "PAUSE" blinks in the display window.
5. To release pause and resume recording, press REC/PAUSE button again and then recording resumes from that point.
 - 10 minutes after you pause a recording, recording pause automatically released and the unit goes into the stop mode.

● Selecting the Recording Mode

1. Press menu button to select the recording mode.
2. Display the "SPEED" on the screen and "SP" or "LP" will blink.
3. Press FF/REW button to select "SP" or "LP" and press PLAY/STOP button to confirm.

7

Operating voice recorder

● Convenient Function for Recording

Index Recording

If you press FF button during recording mode, Message number will be added and recording will be continued.

REC monitor

During recording, you can monitor recording message by inserting earphone into earphone jack.

Recording in response to the sound

When VOR (Voice Operated Recording) function is set to ON, recording starts when recorder detects sound and stops when no sound is heard.

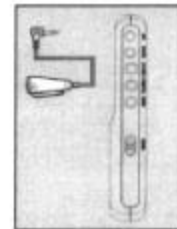
- Press MENU button two times and then the VOR icon will blink.
Press FF/REW button to select "ON" and press PLAY/STOP button once more or wait 4 seconds.

8

Operating voice recorder

Recording with an external microphone

You can record if you connect a pin type microphone to the MIC jack.
When you connect an external microphone, the built-in microphone is automatically cut off.



9

Operating voice recorder

• Playback Messages

When playing back a previously recorded message, start from Step 1.
When playing back a message you have just finished recording, start from Step 3.

1. Press FOLDER/ENTER button repeatedly to display the folder in which you wish to playback.
2. Press FF/REW button to display the desired message number.
3. Press PLAY/STOP button, and then playback will start.
 - The unit will continuously playback each message and the last message in a folder has been played, the unit stops at the beginning of the last message.
 - Connect an earphone to the EAR jack. The built in speaker will be automatically disconnected.
 - Adjust volume level with volume UP/DOWN buttons during playback.
4. To stop playback, press PLAY/STOP button one more time.
5. To pause playback, press PLAY/STOP button more than 2 second during playback, playback will pause and then "PAUSE" blinks in the display window.
6. To release pause and resume playback, press PLAY/STOP button again and then playback resumes from that point.
 - 10 minutes after you pause recording, recording pause automatically releases and the unit goes into the stop mode.

10

Operating voice recorder

• Convenient Function for Playback

Searching forward/backward during playback

To search forward, keep FF button pressed during playback and release the button at the point you wish to resume playback.
To search backward, keep REW button pressed during playback and release the button at the point you wish to resume playback.

- Press FF or REW button quickly and you can go forward or next message by pressing once.
- Press FF or REW button about 1~3-second and you can go forward or backward 1.0 seconds in a message.
- Press FF or REW button more than 3 seconds and you can go forward or backward about 1 minute in a message.
- When fast search is done to the end of the last message, "END" blinks and release the button at this time, the unit will play back the last 5 seconds of the message.

Scan play

If you press PLAY/STOP button for more than 2 second in stop-mode, the fore part of each message in current folder will be played for 5 seconds in order.

11

Operating voice recorder

Message repeat

If you press MENU button quickly twice during playback, current playing message will be repeated.

To release the repeat function, press PLAY/STOP or MENU button.

Playback the specified section repeatedly

While playing back a message you can set the start (A) and end (B) points for a section you wish to play repeatedly.

1. During playback, press MENU button briefly. The starting point (A) of the section you wish to play repeatedly is set.
 2. During playback, press MENU button briefly. The finishing point (B) of the section is set.
- To release A-B repeat playback, press PLAY/STOP button or MENU button.
 - You cannot set A-B repeat for a section that overlaps two or more message.

12

Operating voice recorder

• Erasing Messages

You can erase the recorded messages one by one or all messages in a folder at a time.
To stop erasing, press PLAY/STOP button or wait 4 seconds.

Notice

- Once a recording message has been erased, you cannot retrieve it.

Erasing one FILE

1. If you select a message with FF/REW buttons in the stop mode and press ERASE button quickly. (Selected message number will be blinking on LCD. To checking the message, the erasing file will be played.)
2. If you press ERASE button one more time, selected file will be erased and the following message number will be changed to the current message number.

Erasing all data in FOLDER

1. If you press ERASE button for more than 3 seconds, current folder will blink on the LCD.
2. Select a folder with FOLDER/ENTER button.
3. And then press ERASE button one more time, so that all data in the selected folder will be erased with a beep sound.

13

Operating voice recorder

Erasing all FOLDERS

1. If you press ERASE button for more than 3 seconds, the current folder will blink on the LCD.
2. Select all folders with FOLDER/ENTER button.
3. And then press ERASE button one more time, all data in the all folders will be erased with a beep sound.

14

Operating voice recorder

● Connecting with an External Appliance

In case of recording with an external appliance into the voice recorder unit

Connect optional audio cable into both earphone of external appliance and MIC of DVR unit and press both REC/PAUSE button of DVR unit and PLAY button of external appliance.

(Recording will be mono and you can check the recording condition with earphones.)

In case of recording from DVR unit into external appliance

Connect optional audio cable into both earphone jack of DVR unit and mic or external INPUT of external appliance and press both PLAY/STOP button of DVR unit and REC button of external appliance.



(Do test-recording in advance and you can adjust volume level with VOLUME UP/DOWN buttons of the DVR unit.)

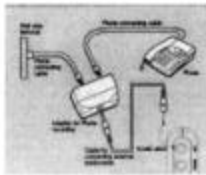
15

Operating voice recorder

Telephone recording

Connect optional Tel-line adapter into Tel-line cord as following picture and press REC/PAUSE button once telephone conversation is started.

- Not available for Digital Telephone and the telephone with a different MODULAR JACK.



16

Other Functions

● Index Mark Function

While recording messages, you can add an index mark. By adding an index mark to a message you can easily find the point you want to playback when you make a long recording such as a meeting.

- You can add an index during recording and you can erase the index mark in stop mode.
- You can add three index marks in a message.

1. To mark an index during recording
While recording a message, press INDEX button for more than second at the point you want to mark.

2. Erasing the index
In stop mode, if you select a message with an index mark it will displayed the index mark same as marking number.

Press INDEX button in stop mode to select index mark for erase and press ERASE button for 4 seconds. And then selected index mark will delete.

17

Other Functions

● Starting Recording at a Desired Time

You can start recording at a desired time.

1. Press MENU button 4 times, the unit enters the timer set-up mode.
2. Press FF/REW button to select "ON" and press FOLDER/ENTER button.
And then "daily" will blink.

Set the recording start date

Press FF/REW button to select start recording on a desired date a day of the week or daily and press FOLDER/ENTER button. If you have selected a day of the week or daily, start from step 7.

3. YY:MM:DD will display and YY(year) will blink.
4. Press FF/REW button to select YY(year) and press FOLDER/ENTER button. And then YY(year) will stop and MM(month) will blink.
5. Press FF/REW button to select MM(month) and press FOLDER/ENTER button. And then MM(month) will stop and DD(day) will blink.

18

Other Functions

Set the recording start time

6. Press FF/REW button to select DD(day) and press FOLDER/ENTER button. And then DD(day) will stop and TT(MM) will display and TT(start time) will blink.
7. Press FF/REW button to select TT(start time) and press FOLDER/ENTER button. And then TT(start time) will stop and MM(start minute) will blink.
8. Press FF/REW button to select MM(start minute) and press FOLDER/ENTER button. And then MM(start minute) will stop and "End" is displayed for one second.

Set the recording end time

And then the hour digits of the recording end will blink in the display window.

9. Press FF/REW button to select TT(End time) and press FOLDER/ENTER button. And then TT(End time) will stop and MM(End minute) will blink.
10. Press FF/REW button to select MM(start minute) and press PLAY/STOP button after press FOLDER/ENTER button.

- At the set time, recording will start automatically. When the recording ends, the unit will stop automatically at the beginning of the newly recorded message.
- To stop the timer recording, press PLAY/STOP button.
- To change the timer setting, in step from 4 to 10 to change the year, month, day or time and press PLAY/STOP button.
- To cancel the timer recording setting, select "OFF" in step 2 and press PLAY/STOP button.

The setting has been completed.

19

Other Functions

■ Notice

- You cannot set the timer to record more than one message.
- Mark sure that the remaining recording time is long enough for the timer recording. You cannot set the timer if the length of the timer recording exceeds the remaining recording time. However, in the case of recording once a week of everyday, you can set the timer if the remaining recording time is longer than the first recording and for the second of later recording, timer recording stops when there is no more remaining time of the unit.
- If 99 messages have been recorded in the selected folder of the memory is full, timer recording will not start.
- If the timer is set to start recording before 23:59 and to end recording after 0:00, the recording will stop the next day.
- If the timer start time comes during alarm playback, after the current playback the timer recording starts.
- If you press any button during timer recording, this function will release.

20

Other Functions

● Playback a Messages or an Alarm at a Desired Time

You can sound an alarm or start playback of a selected message at a desired time. You can have the message or alarm played back at a desired date, once every week, or the same time everyday.

1. Press MENU button 3 times, the unit enters the alarm set-up mode.
2. Press FF/REW button to select "ON" and press FOLDER/ENTER button. And then the alarm date set-up mode will blink.

Set the alarm date

3. Press FF/REW button to select start alarm on a desired date, a day of the week or daily and press FOLDER/ENTER button. If you have selected a day of the week or daily, Start from Step 7 YY:MM:DD will display and YY(year) will blink.
4. Press FF/REW button to select YY(year) and press FOLDER/ENTER button. And then YY(year) will stop and MM(month) will blink.
5. Press FF/REW button to select MM(month) and press FOLDER/ENTER button. And then MM(month) will stop and DD(day) will blink.

21

Other Functions

● Preventing Accidental Operation

HOLD function

Slide the HOLD switch in the direction of the arrow. "HOLD" will flash three times, indicating that all the functions of the buttons are locked.

To cancel the HOLD function, simply slide the HOLD switch in the opposite direction.

Folder or erase lock

Press FOLDER/ENTER button to select a folder in which you want to lock and press REC/PAUSE button. And then "FOLDER LOCK" will be displayed on display window and set the erase lock.

If you set the lock of a folder it will not erase.

In case of erasing all folders, you can erase the locked folder.

To cancel the folder lock setting, select the locking folder and press REC/PAUSE button.

24

Other Functions

● Password Function

Prevent access to the recorded message of another person.

Setting and release

1. Press MENU button 6 times, the unit enters the password set-up mode.
2. Press FF/REW button to select "ON" and press FOLDER/ENTER button. And then "00:00" will display and fore "00" will blink.
3. Press FF/REW button to select number from 00 to 99 and press FOLDER/ENTER button. Press FF/REW button to select number from 00 to 99 and press FOLDER/ENTER button. And then set password will blink.
4. Press PLAY/STOP button or wait 8 seconds and the setting has been completed.
5. To cancel the password setting, select "OFF" in step 2.

Enters

6. Press FF/REW button to select fore two digits of password and press FOLDER/ENTER button. And then next two digits will blink.
7. Press FF/REW button to select next two digits of password and press FOLDER/ENTER button.
8. Press PLAY/STOP button and then the unit enters stop-mode.

- Within 10 minutes after you enter the stop-mode and do not press any button, password will be active.
- To release password function, press PLAY/STOP and FOLDER/ENTER button at the same time.

25

Other Functions

● Selecting the Display Mode

You can select the display mode for the stop, recording and playback modes. (If the unit is left unoperated for more than 3 seconds in the stop mode, the display will show the current time, regardless of the display mode setting.)

Each time you press DISPLAY, the display mode will change as shown below:

1. Remaining recording time : The remaining recording time is displayed during recording or when stopped in playback mode.
2. Recorded date : The date that the current message was recorded. (If the clock has not been set, "--:--" will be displayed.)
3. Recorded time : The date and time that the current message was recorded. (If the clock has not been set, "--:--" will be displayed.)

● Selecting the BEEP Sound

1. Press MENU button 5 times, "BEEP" will be displayed.
2. Press FF/REW button to select what you want to mode and press FOLDER/ENTER button.
3. Press PLAY/STOP button or wait 8 seconds and the setting has been completed.

- If you select the BEEP when you press any button, the BEEP sound will be heard.

26

Precautions

● On Using

- Do not drop the product or give it a shock. It could cause troubles.
- Do not place the product in the following condition and/or places:
 - Where there are high temperatures above 60°C.
 - A dusty place.
 - Near heaters or any type of heat sources.
 - In a car with windows closed, especially in summer.
 - A heavy damp place like a bathroom.
- Any excessive force on the LCD display could cause damages to it and to overall LCD functions.
- A magnetic card such as a credit card or a subway communication ticket may not be working any longer once it is placed on or close to the speaker.
- The seller holds no liability for any damages or claims caused by misuse of the product.
- The seller holds no liability for any lost messages which are caused by repair or any other troubles.

27

Precautions

● On Power

- Do not have a short circuit, disassemble, heat or put battery in the fire.
- Do not use different kind of battery.
- Take the battery out when you don't use for a long time.

● On Safety

- Take battery out when there are malfunctions caused by smoke and heat.
- Do not use in the places where electronic product's operation is prohibited like inside of air planes.
- Do not use while driving and walking, since any accident could be happened.

28

Trouble shooting

Check following articles first if you find any mal-functional matter.

In case of no LCD display

Check1 Did you check the battery capacity?

- ▶ Replace batteries

Check2 Are both polarities of the battery loaded in the right way?

- ▶ Load batteries in the right +/- position.

In case of no recording

Check1 Is the message number or file FULL?

- ▶ Erase unnecessary message.

Check2 Did you check the battery capacity?

- ▶ Replace batteries

In case of no playback

Check1 Isn't there any recorded message?

- ▶ Check the recording message.

Check2 Did you check the battery capacity?

- ▶ Replace batteries

In case of no sound from speaker

Check1 Is your volume at 0(zero) position?

- ▶ Adjust the VOLUME button.

Check2 Is your earphone inserted in?

- ▶ Take the Earphone Jack out.

29

Trouble shooting

In case of no sound from earphone

Check1 Is your volume at 0(zero) position?

- ▶ Adjust the VOLUME button.

Check2 Is your earphone properly inserted?

- ▶ Insert the Earphone Jack completely

In case of S/W installation interruption

Check 1 Does your computer meet system requirement for this product's S/W?

- ▶ Check the system requirement.
(After completing S/W installation, your PC's hard disk should have enough space)

- In case of low battery displaying, operating may not be proceeded properly

30

Specifications

For improvement of product, specifications and design can be changed without previous notice.

Item	Specification	
Model Number	DMR-1209SU	DMR-1216SU
Max Recording Time(SP)	250min	510min
Max Recording Time(LP)	550min	1100min
Max File No in REC	6 folder x 99 files	
Freq. Response	400Hz - 3500Hz	
Max Output Power	100mW at THD 10%	
Input	Built-in MIC & 3.5" Mono Jack	
Output	Built-in speaker & 3.5" Mono Jack	
Load Speaker	Dynamic 23mm	
Dimensions	31(W) x 111(H) x 18(D) mm	
Weight	40g(Without battery)	
Storage Medium	Built-in Flash Memory	
Power Source	DC 3V, "AAA" alkaline x 2	
Battery Life Time	Recording/10hrs, Playback/8hrs	
Condition to use	0°C - 40°C	
Basic Accessory	User's manual, Earphone, 2 AAA battery, USB cable, Install CD	
Optional Accessory	Telephone Adapter, Telephone cord, Audio Cable, External Pie MIC, Head strap	

31

Voice Wizard *plus* Install

The "Voice Wizard *plus*" software enables you to do the following:

Saving messages recorded on the voice recorder to your computer

You can save the selected messages to your computer's hard disk.

You can transfer the selected messages in a folder or all folders.

When saving the messages on your computer, you can Convert from "vwd file" to "wav file" (8-bit or 16-bit).

Playback the messages on the computer

The messages in the voice recorder or your computer's hard disk can be played back through your computer's speakers. In addition to normal playback, you can enjoy various ways of playback, such as Repeat Play and A-B Repeat Play.

Editing the messages saved to the computer on the computer screen

You can enjoy various editing functions; divide/combine, delete, save. For the messages saved to the computer, you can convert the file saving formats.

Sending voice e-mails

You can send a voice e-mail attaching the selected message(s).

Voice Wizard *plus* Install

■ Notice

- To send voice e-mails, you need to register with and Internet provider.
- You may not be able to send or receive e-mails larger than certain file size. Before sending voice e-mails, please check with your Internet provider.

System Requirements

Your computer and system software must meet the following minimum requirements.

- IBM PC/AT or compatible (You cannot use this software with Macintosh.)
- CPU: 200MHz Pentium® processor or higher
- RAM: 64MB or more
- Hard disk space: 40MB or more depending on the size and number of sound files you store.
- CD-ROM drive
- USB port

OS: Microsoft Windows XP, Windows 2000 Professional, Windows Millennium Edition, Windows 98 or Windows 98 Second Edition

Voice Wizard *plus* Install

Installing the "Voice Wizard *plus*" Software

Installing the software
Install the "Voice Wizard *plus*" Software to your computer's hard disk, etc.

■ Notice

- Do not connect the voice recorder to the computer before installing the Software

1. Turn on your computer and start up Windows.

■ Notice

- Be sure to close all running programs before installing the software.

2. Insert supplied CD-ROM in the CD-ROM drive.

The installer automatically starts up and the following display appears.



If the installer does not start up, double-click [setup.exe] in the CD.

Voice Wizard *plus* Install

3. Follow the displayed instructions.

4. When the [Finish] dialog box appears, click [OK] and the installation is completed.

■ Notice

- Do not remove CD-ROM from the CD-ROM drive.

5. Connect the voice recorder to the USB connector of your computer using the supplied USB cable. And then the below window will display.

■ Notice

- Be sure to install the "Voice Wizard *plus*" Software before connecting the voice recorder to your computer.
- Be sure to power on the voice recorder before connecting the voice recorder to your computer.



Click "Next" button.

Voice Wizard *plus* Install

6. Select " Search for the best driver for your device (Recommended)" and click "Next" button.
7. Select " CD-Rom driver and click "Next" button.
8. Follow the displayed instructions.
9. When the [Finish] dialog box appears, click [OK] and the installation is completed.

■ Notice

- If you wish to move the software to another drive or directory after it is installed, you need to uninstall the software and then reinstall it. The software does not work properly if you just move the files.

○ Tip

You can also start up the uninstaller by clicking [Start] and then selecting [Settings], [Control Panel], and [Add/Remove Programs].

Voice Wizard *plus* Install

Connecting the Voice Recorder to your computer

Connect the voice recorder to the USB connector of your computer using the supplied USB cable.
USB connection cable can be connected or disconnected when the voice recorder and the computer are turned on or off. The voice recorder is recognized by the computer as soon as the cable is connected, enabling you to proceed with the operation.

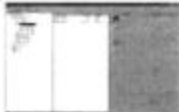
■ Notice

- Do not connect more than two USB devices to your computer. Normal operation will not be guaranteed.
- Use of the voice recorder with a USB hub or a USB extension cable is not guaranteed.
- A malfunction may occur depending on the USB Devices connected at any one time.
- Check the remaining battery power of the voice recorder (more than one segment of the battery indicator should be on) before connecting the voice recorder to the computer. If the batteries are exhausted, communication between the voice recorder and the computer may not succeed.
- We recommend you disconnect the cable from the computer when you do not use the Voice Wizard *plus*.

Using the Voice Wizard *plus*

USING THE Voice Wizard DATA MANAGER

1. Start up Windows.
2. Double click the [Voice Wizard *plus*] in the background, and the Voice Wizard *plus* Software starts up and the main window appears.



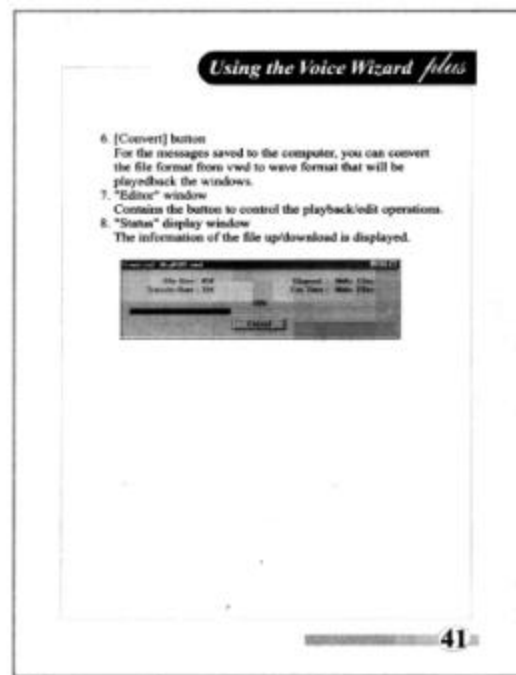
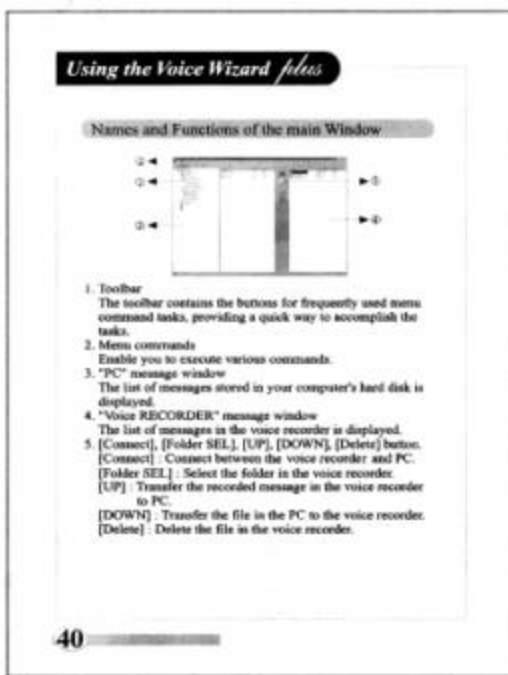
3. Click the [Connect] button on the center of the main window.
The messages in the voice recorder are loaded to the computer and displayed on the voice recorder message window.
When the voice recorder is disconnected, no folders of messages are displayed in the voice recorder message window.



Using the Voice Wizard *plus*

■ Notice

- If no messages are loaded and an error message is displayed after you click [Connect], the voice recorder is not securely connected. Check the connection.
4. To quit the Software
Click the [X] button, on the upper right side of the window or Select [Quit] from the [File] menu.



INFORMATION TO THE USER (Part 15.105(b))

For Class B digital device

INFORMATION TO THE USER

Τησ εθυιπμεντ ηασ βεεν τεστέδ ανδ φουνδ το χομπλνσ ωιτη τηε λιμιτς φορ α Χλασσ Β διγίταλ δεσίχε, πυρσυαντ το παρτ 15 οφ τηε ΦΧΧ Ρυλεσ. Τηεσε λιμιτς αρε δεσιγνεδ το προωιδε ρεασοναβλε προτεχτιον αγαινιστ ηαρμφυλ ιντερφερενχε ιν α ρεσιδεντιαλ ινσταλλατιον. Τηισ εθυιπμεντ γενερατεσ, υσεσ ανδ χαν ραδιατε ραδιο φρεθυενχσ ενεργησ ανδ, ιφ νοτ ινσταλλεδ ανδ υσεδ ιν αχχορδανχε ωιτη τηε ινστρυχτιονσ, μαψ χασσε ηαρμφυλ ιντερφερενχε το ραδιο χομμυνιχατιονσ. Ηοωεσπερ, τηερε ισ νο γυαραντεε τηατ ιντερφερενχε ωιλλ νοτ οχχυρ ιν α παρτιχυλαρ ινσταλλατιον. Ιφ τηισ εθυιπμεντ δοεσ χασσε ηαρμφυλ ιντερφερενχε το ραδιο ορ τελεωισιον ρεχεπτιον, ωηιχη χαν βε δετερμινεδ βσ τυρνινγ τηε εθυιπμεντ οφφ ανδ ον, τηε υσερ ισ ενχυοραγεδ το τρσ το χορρεχτ τηε ιντερφερενχε βσ ονε μορε οφ τηε φολλοωινγ μεασυρεσ:

Ρεοριεντ ορ ρελοχατε τηε ρεχειωινγ αντεννα.

Ινχρεασε τηε σεπαρατιον βετωεεν τηε εθυιπμεντ ανδ ρεχειωερ.

Χοννεχτ τηε εθυιπμεντ ιντο αν ουτλετ ον α χιρχυιτ διφφερεντ φρομ τηατ το ωηιχη τηε ρεχειωερ ισ χοννεχτεδ.

Χονσυлт τηε δεαλερ ορ αν εξπεριενχεδ ραδιο/Τς τεχηνιχιαν φορ ηελπ.

WARNING (Part 15.21)

Χηανγεσ ορ μοδιφιχατιονσ νοτ εξπρεσσυησ αππροωεδ βσ τηε μανυφαχτυρερ χουλδ ποιδ τηε υσερ'σ αυτηοριτυ το οπερατε τηε εθυιπμεντ.