



FCC Information

This device complies with Part 15 of the FCC Rules. Operation is subject to the following two conditions:

- (1) this device may not cause harmful interference, and
- (2) this device must accept any interference received, including interference that may cause undesired operations.

This equipment has been tested and found to comply with the limits for a Class B digital device, pursuant to part 15 of the FCC Rules. These limits are designed to provide reasonable protection against harmful interference in a residential installation.

This equipment generates, uses and can radiate radio frequency energy and, if not installed and used in accordance with the instructions, may cause harmful interference to radio communications. However, there is no guarantee that interference will not occur in a particular installation. If this equipment does cause harmful interference to radio or television reception, which can be determined by turning the equipment off and on, the user is encouraged to try to correct the interference by one more of the following measures:

- Reorient or relocate the receiving antenna.
- Increase the separation between the equipment and receiver.
- Connect the equipment into an outlet on a circuit different from that to which the receiver is connected.
- Consult the dealer or an experienced radio/TV technician for help.

WARNING

Changes or modifications not expressly approved by the manufacturer could void the user's authority to operate the equipment.





Features

- * **EL BACK Lighting**

To be available for checking LCD display in dark place

- * **AUTOMATIC POWER OFF**

Power will be automatically off if there's no button pressing

- * **VOICE / MP3 FOLDER & FILE**

Each divided V1, V2, V3 folder can hold up Max. 99 voice recording files. (Max. 297 recording files are available.)

And you can also save MP3 files.

- * **TIME STAMP & REMAINING RECORDING TIME DISPLAY**

Recording time & Remaining time will be displayed.

- * **USB Interface**

To adopt USB standard, which is easy to set up and connect

- * **MP3 PLAY**

To be available for MP3 files

- * **EQ function**

During MP3 play, you can enjoy POP, CLASSIC, JAZZ, ROCK modes.

- * **VOR (Voice Operated Recording) Function**

Recording will be proceeded only with voice and other actual sound.

- * **REPEAT Playback function**

To be available for REPEAT PLAYBACK

- * **SCAN Play**

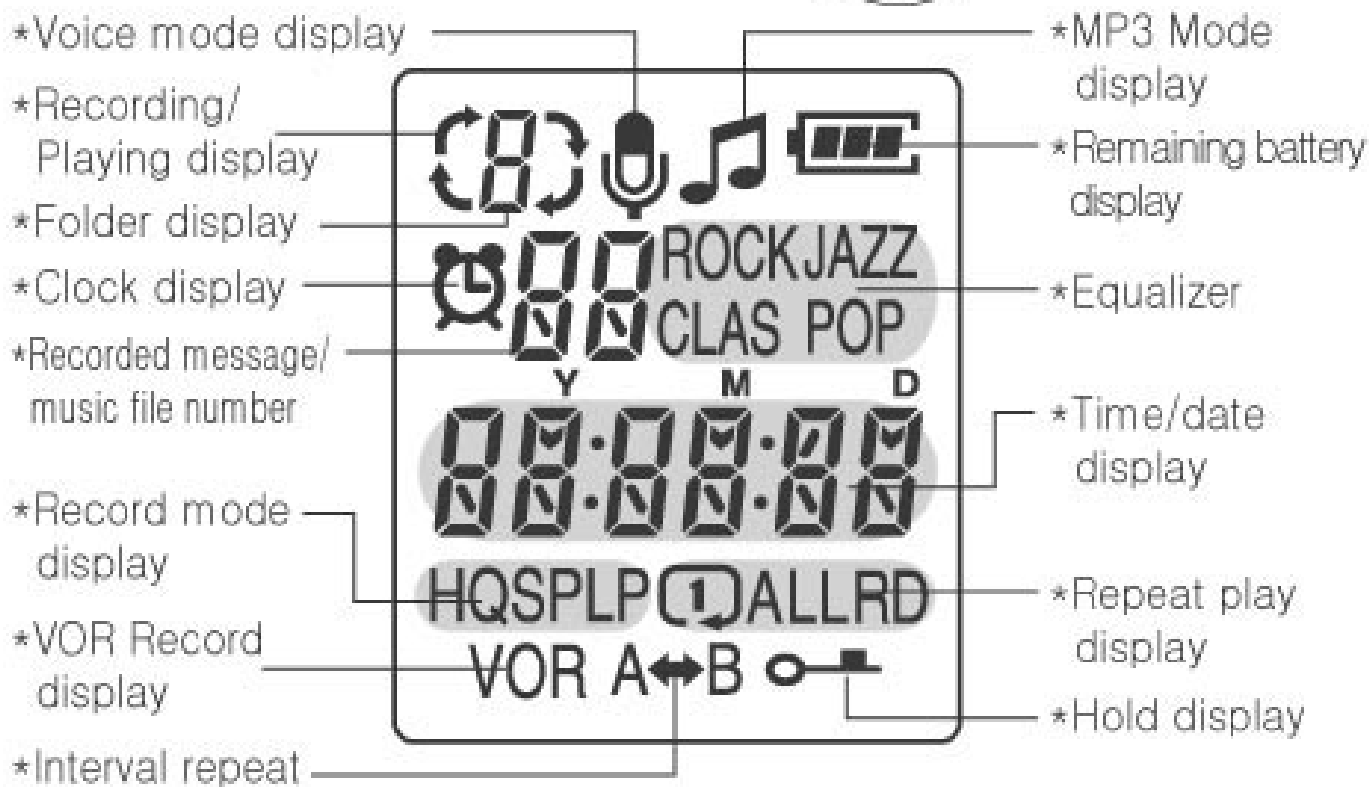
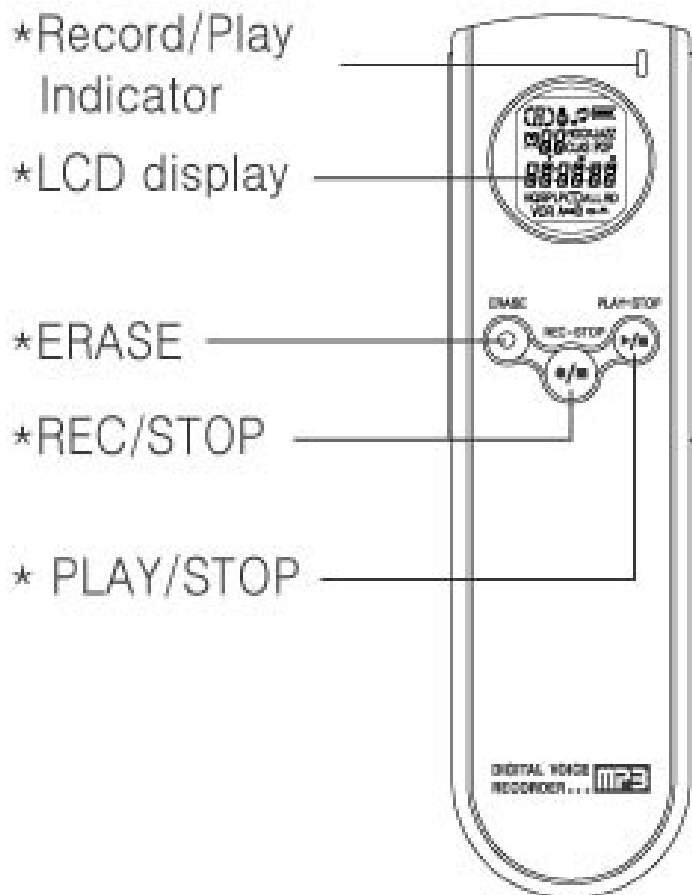
To be available for playing only fore part of each message successively.

- * **External Input / output Connection**

To be available for mutual recording with another appliances

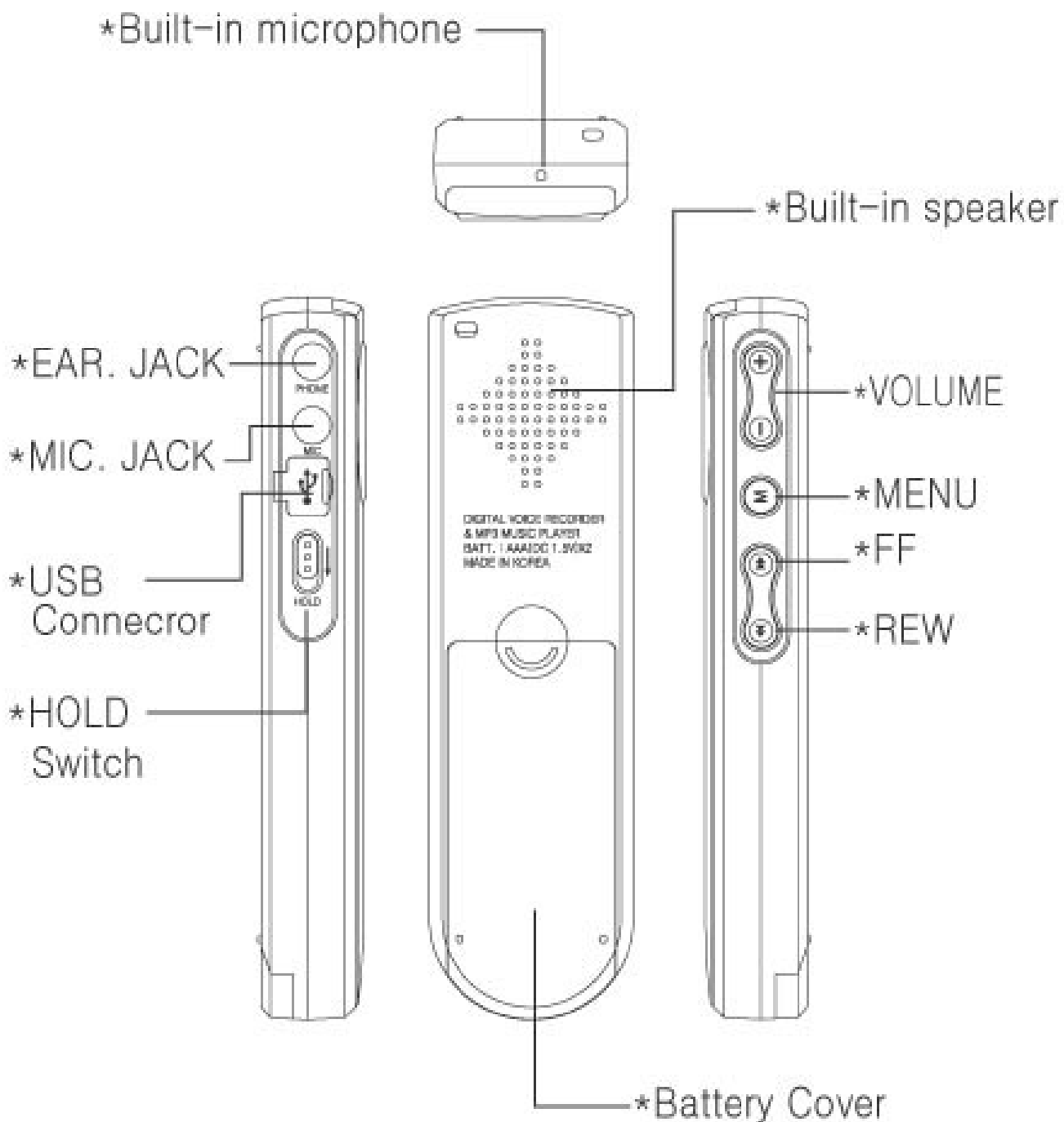


Name of each part





Name of each part

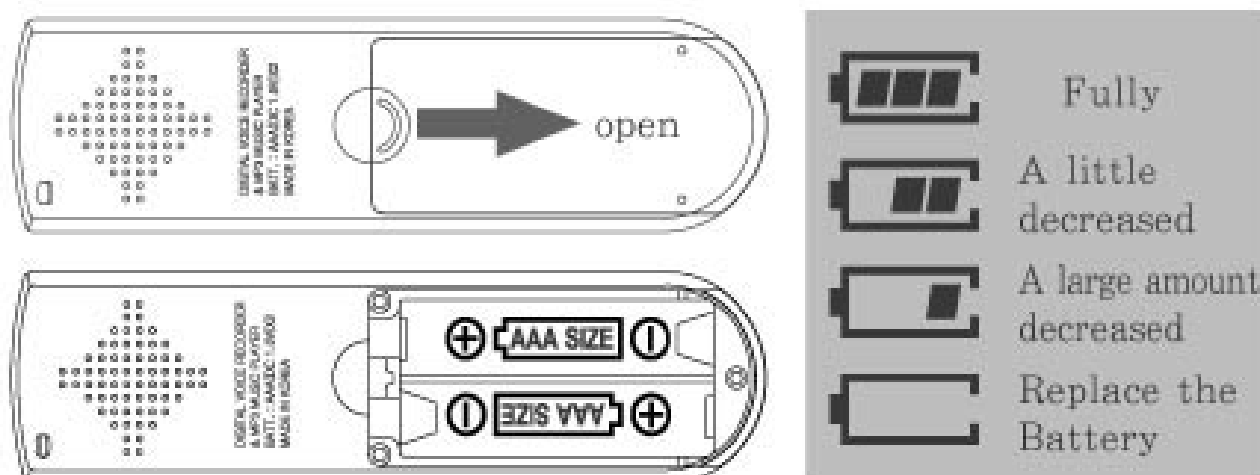


Preparation for operating

* BATTERY LOADING

Loading and replacing of the batteries should be done at stop position.

1. Open the battery cover and load two AAA typed alkaline battery in the compartment and then close the cover.



(Battery : AAA, LR03 or UM-4 or equivalent)

*Battery life time

Battery	at recording mode	at speaker playback (VOL : 10)	at earphone playback
"AAA" Alkaline	for about 12 hrs	for about 10 hrs	for about 14 hrs

For manager battery life time efficiently, the unit will be AUTO OFF during no-button pressing.

Please let HOLD switch ON position when you don't use the unit.

Preparation for operating

* Getting to Power ON

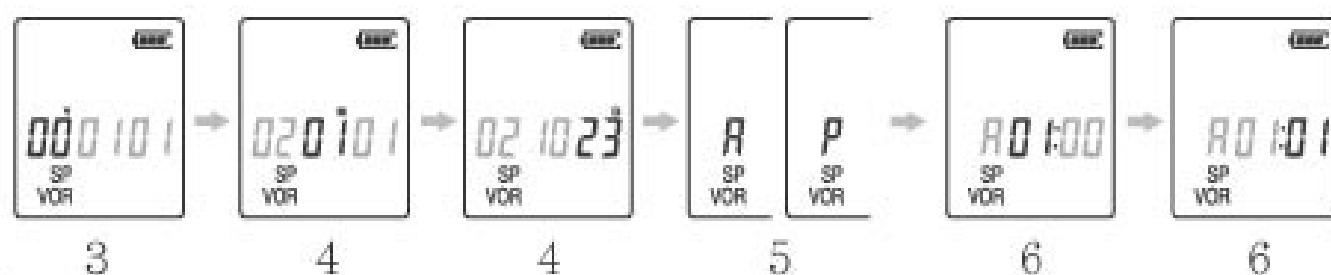
Please set HOLD button OFF and press PLAY/STOP button. The unit will be powered on.

* Setting time

1. Let the power on. (Refer to the above 'Getting to POWER ON')
2. Press MENU button and select dAtE by FF/REW buttons. And then press MENU button one more time.
3. Set Year : When "00" is blinking, select year by FF/REW buttons and then press MENU button. Year will be set up and Set DATE Mode will be proceeded automatically.
4. Set Date/Month : Select the blinking part of LCD by FF/REW buttons and press MENU button. Date/Month will be set up, Set AM or PM will be proceeded.
5. Set AM or PM : Select the blinking part of LCD by FF/REW buttons and press MENU button. Time mode will be set up, Set time mode will be proceeded.
6. Set time : Select the blinking part of LCD by FF/REW buttons and press MENU button.


Now, Set-up is completed.

*When the pre-loaded battery is completely discharged or the replacing battery takes will be proceeded.



Description of button in Voice Recorder

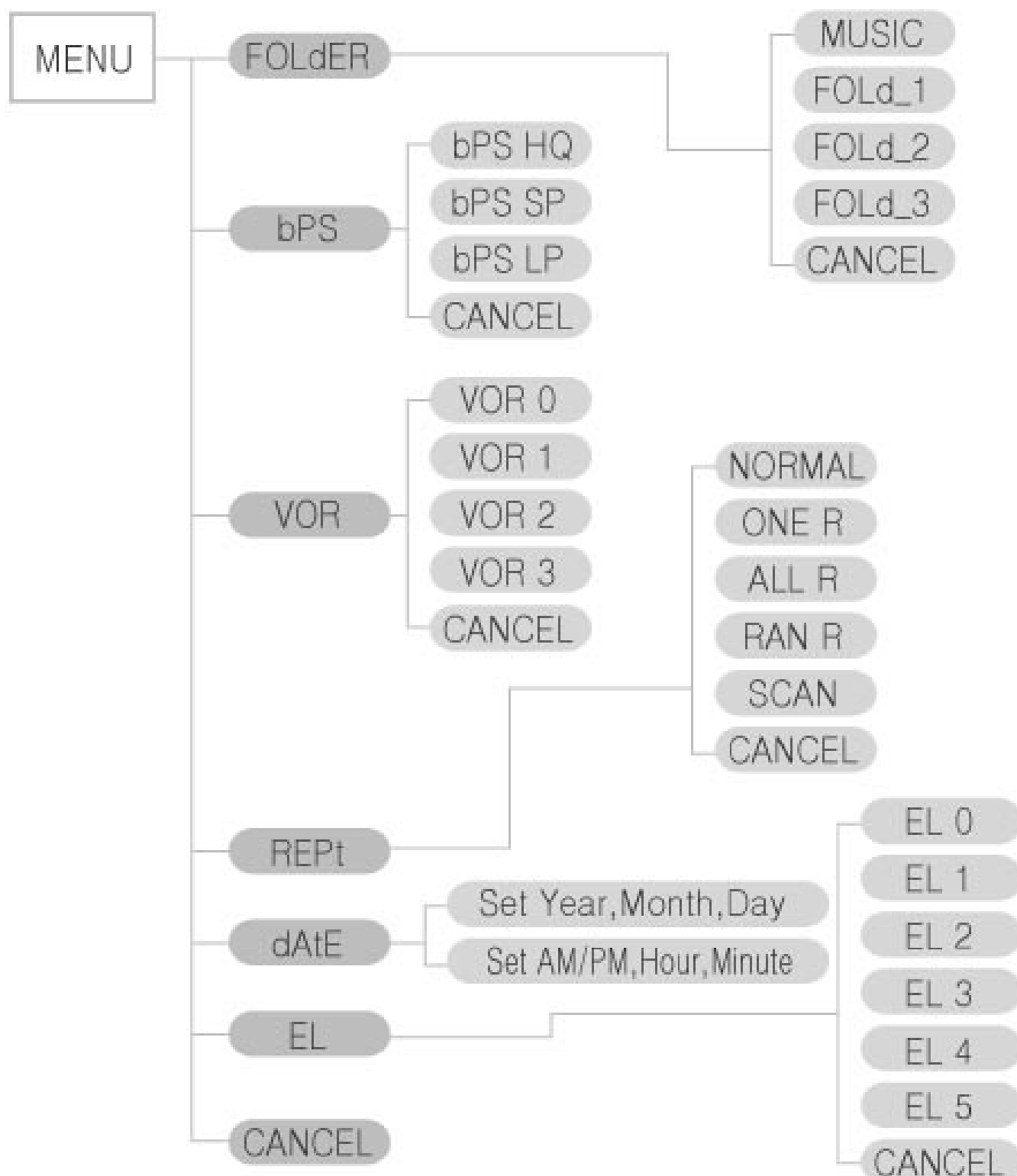
* Voice Recorder Mode ("long" : over 1 sec., "short" : under 1 sec.)

NAME	operating	STOP	Playback	Recording
 PLAY/STOP	short	playback start	playback stop	PAUSE
	long	power off	power off	
 FF	short	move to next file	move and playback next file	increase message number
	long	fast search to forward	fast forward and playback	
 REW	short	move to before file	move and playback before file	
	long	fast search to reverse	fast rewind and playback	
 MENU		menu set	A↔B repet	remain time display
 VOLUME+		volume up	volume up	
 VOLUME-		volume down	volume down	
 REC/STOP		recording start		record stop
 ERASE	short	erase of current file	erase of current file	
	long	erase of current folder	erase of current folder	



MENU Flow

* MENU flow in Voice Recorder mode

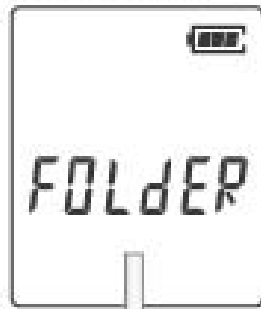


*CANCEL : Exit without select



Operating Recorder

* FOLDER



Press MENU button twice and select folder by FF/REW button. and then press MENU button one more time.

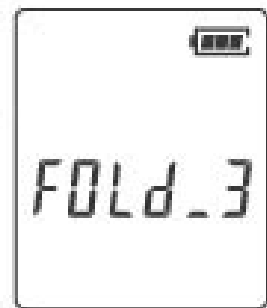
Max. 99files will be available into each FOLD_1,FOLD_2,FOLD_3.



FF button
click Once



FF button
click Once

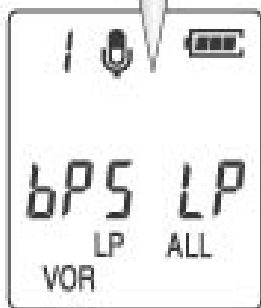
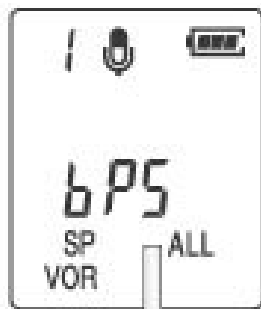


* Recording Mode

1. Press MENU button and select bps by FF/REW button. and press MENU button one mor time.

2. You can select recording mode by FF/REW button and press MENU button.

*Press MENU button during Recording, and then will be displayed remain recording time.



FF button
click Once



FF button
click Once



-HQ: Using high-quality sound recording.

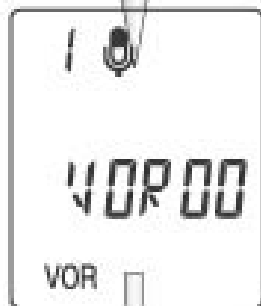
-SP: Standard sound recording.

-LP: Using long time recording.



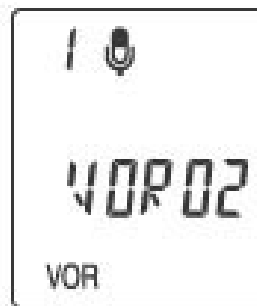
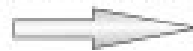
Operating Recorder

* Voice Operated Recording Function

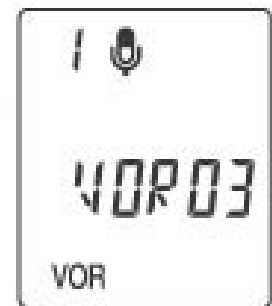


1. Press MENU button and select VOR by FF/REW button. And then press MENU button one more time.
2. You can select VOR mode by FF/REW button (VOR00, VOR01, VOR02, VOR03) and press MENU button.
3. CANCEL means EXIT without select in the setting VOR mode.

FF button
click Once



FF button
click Once

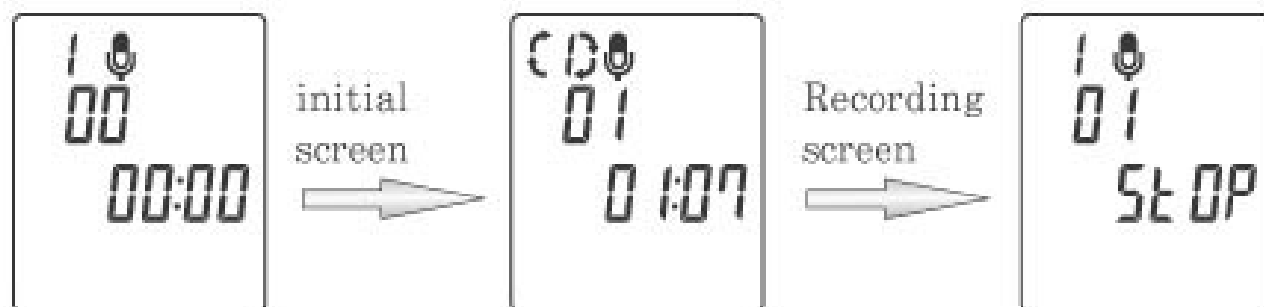


* RECORDING

1. Set HOLD button OFF and get the unit powered on.
2. Let MIC toward sound source and press REC/STOP button.
Recording file will be added and recording will be continued.
3. To stop recording, press REC/STOP button one more time.



Operating Recorder



- Please do test recording in advance to prevent from failing recording
- If MEMORY is exhausted or file number gets more than 99 messages in one folder, "FULL" will be displayed and recording won't be continued.
- VOLUME level won't be adjusted during recording.



* PAUSE

If you press PLAY/STOP button shortly during recording, recording will be paused and if you press PLAY/STOP button once more, PAUSE will be released.



- If PAUSE mode continues for more than 10 minutes, the unit will be AUTO OFF.



Operating Recorder

* Recording Monitor

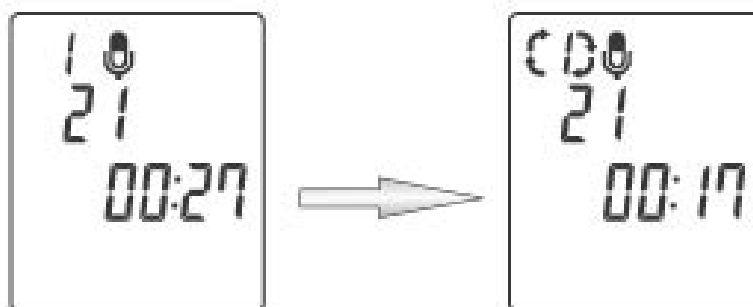
During recording, you can monitor recording message by inserting earphone into earphone jack.

* INDEX addition

If you press FF button during recording mode, file number will be added and recording will be continued.

* PLAYBACK

1. Set HOLD button OFF and get the unit powered on.
2. Select FILE number with FF/REW button.



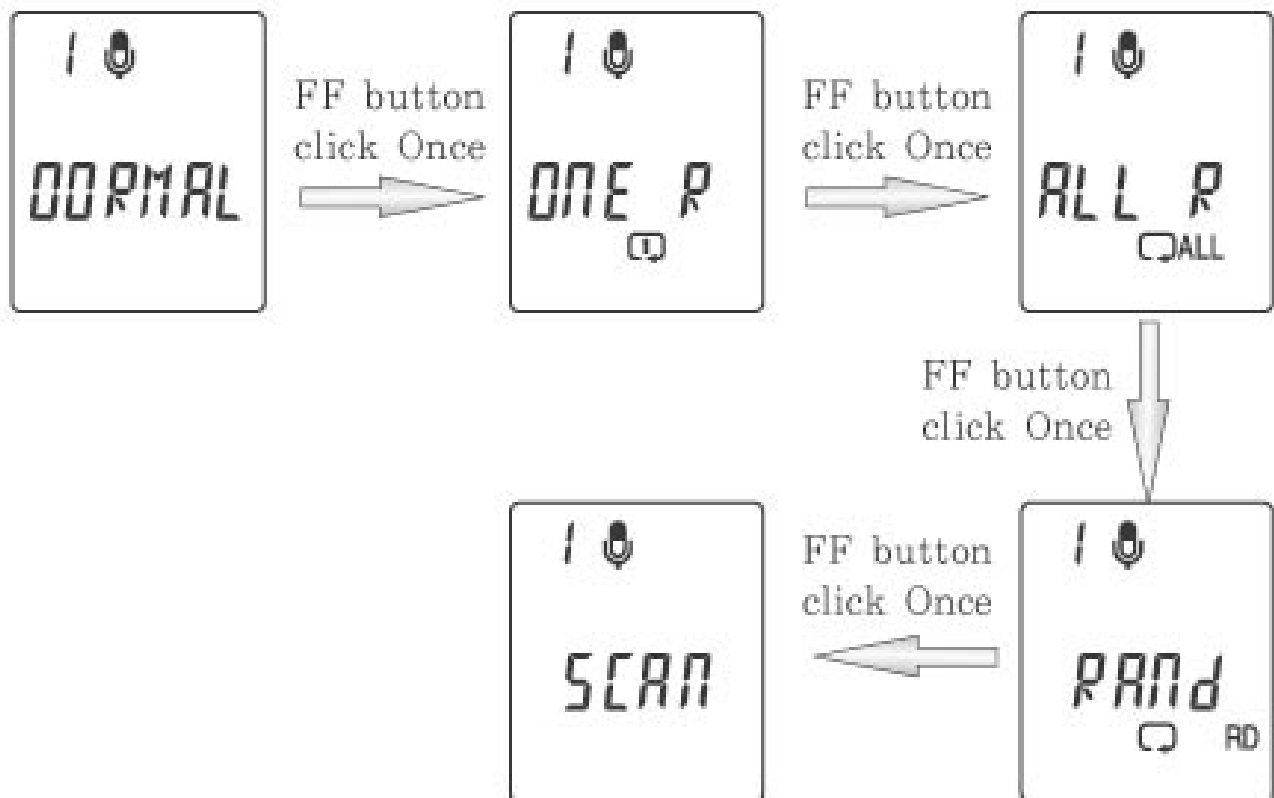
3. To start playback, press PLAY/STOP button.
4. Adjust Volume level with VOLUME button.
5. To stop PLAYBACK, press PLAY/STOP button one more time.

*If you press PLAY/STOP button just after recording, the last recording file will be played.



* FILE REPEAT

1. Press MENU button and select REPT by FF/REW button.
And then press MENU button one more time.
2. You can select your hope REPT mode by FF/REW button (NORMAL, ONE R, ALL R, RAND, SCAN) and press MENU button.
3. CANCEL means EXIT without select in the setting REPT mode



- NORMAL : All file will be played in order and stop.
- ONE R : Selected file will be repeated.
- ALL R : All file will be repeated in order.
- RAND : Selected file will be randomly repeated.
- SCAN : The fore part of each file in current folder will be played for 5 seconds in order.



Operating Recorder

* A-B section REPEAT

If you press MENU button one time shortiy during PLAYBACK mode, point A will be selected.

And please press MENU button one more time, point B will be selected.

And then A-B section will be repeated.

*If there isn't pont B after selecting point A, A-END section will be repeated.





Operating Recorder

* Erasing Recording Data

<Erasing one file>

1. If you select a file by FF/REW button at STOP mode and press ERASE button shortly.
 - *ERASE will be blinking on LCD. For checking the message, the fore part of erasing file will be played.
2. If you press ERASE button one more time, the selected file will be erased and following file No. will be changed as current file No.



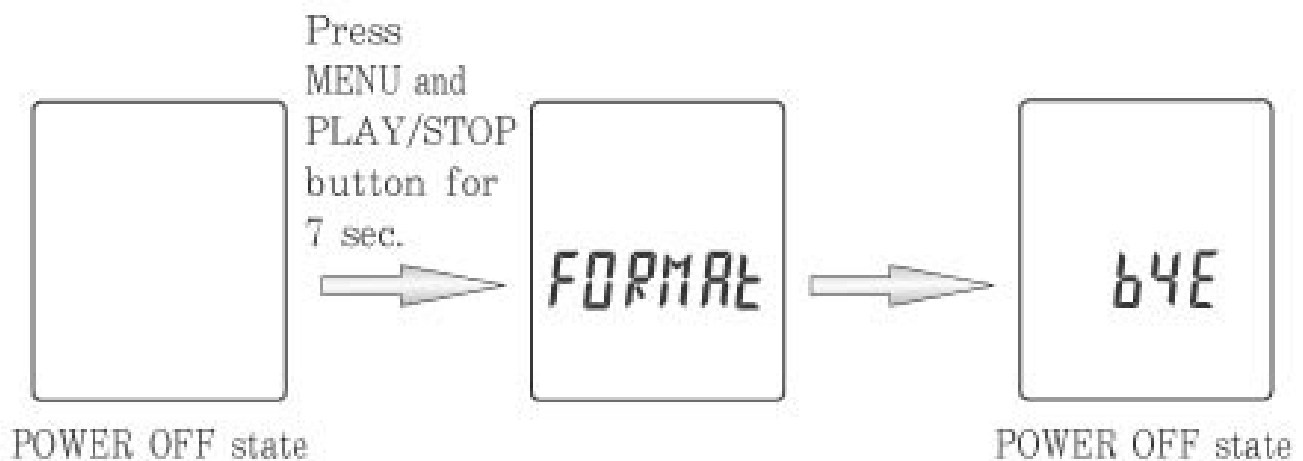
<Erasing all data in folder>

1. Press MENU button twice and select folder by FF/REW button. And then press MENU button one more time.
2. If you press ERASE button for more than 3 seconds, current folder and ERASE will be blinking on LCD.
3. And then press ERASE button one more time, so that all data in the selected folder will be erased.



<Format>

1. If you press MENU and PLAY/STOP buttons for more than 5 seconds at POWER OFF state, "FORMAT" will be blinking on LCD
2. And then all recorded data will be erased.



*At FORMAT mode, all data will be erased.

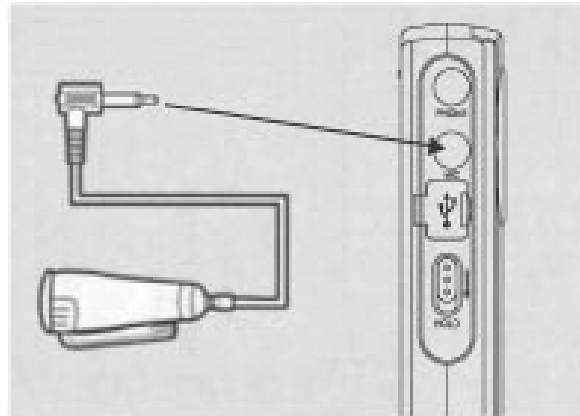


Operating Recorder

* Recording with external microphone

If you connect external microphone into MIC JACK, Built-in mic will be excluded and you can record with optional external microphone.

(You can clip external microphone onto your lapel, so that you can take free action. Also, you can record with much better sound quality by approaching sound source.)



* Connecting with external appliance

1. In case of recording from external appliance into voice recorder unit

: Connect optional audio cable into both EARPHONE of external appliance and MIC of the unit and press REC button. Recording will proceed with L-ch mono and you can check recording condition with earphone.

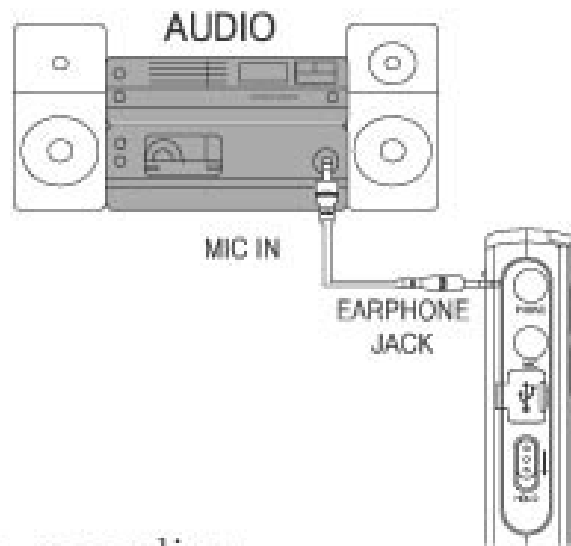
2. In case of recording from the unit into external appliance

: Connect optional audio cable into both EAR of the unit and MIC or external INPUT of external appliance and press both PLAY/STOP button of the unit and REC button of external appliance.



Operating Recorder

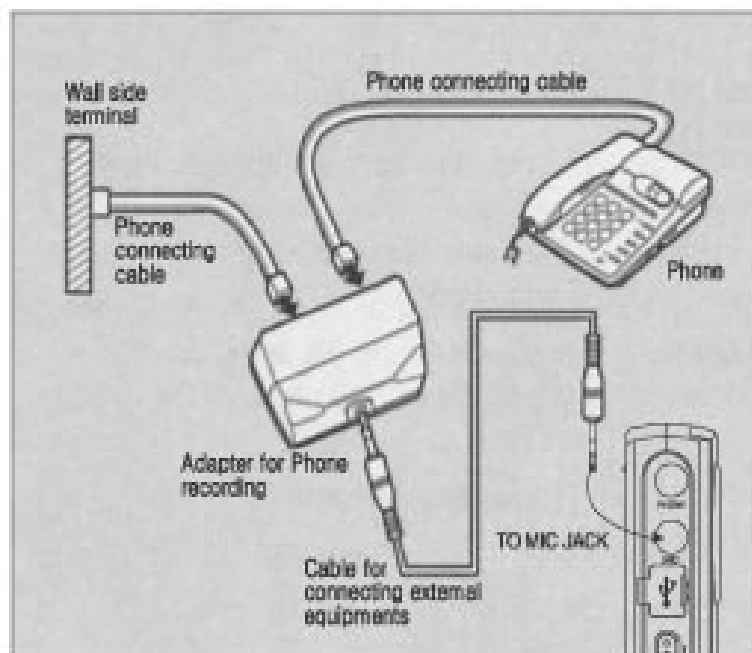
Do test-recording in advance and you can adjust volume level with VOLUME button of the unit



3. Telephone recording

: Connect optional Tel-line adapter into Tell-line cord as following picture and press REC/STOP button once telephone conversation is started.

(Not available for Digital Telephone and the telephone with different MODULAR JACK)





Description of button in MP3

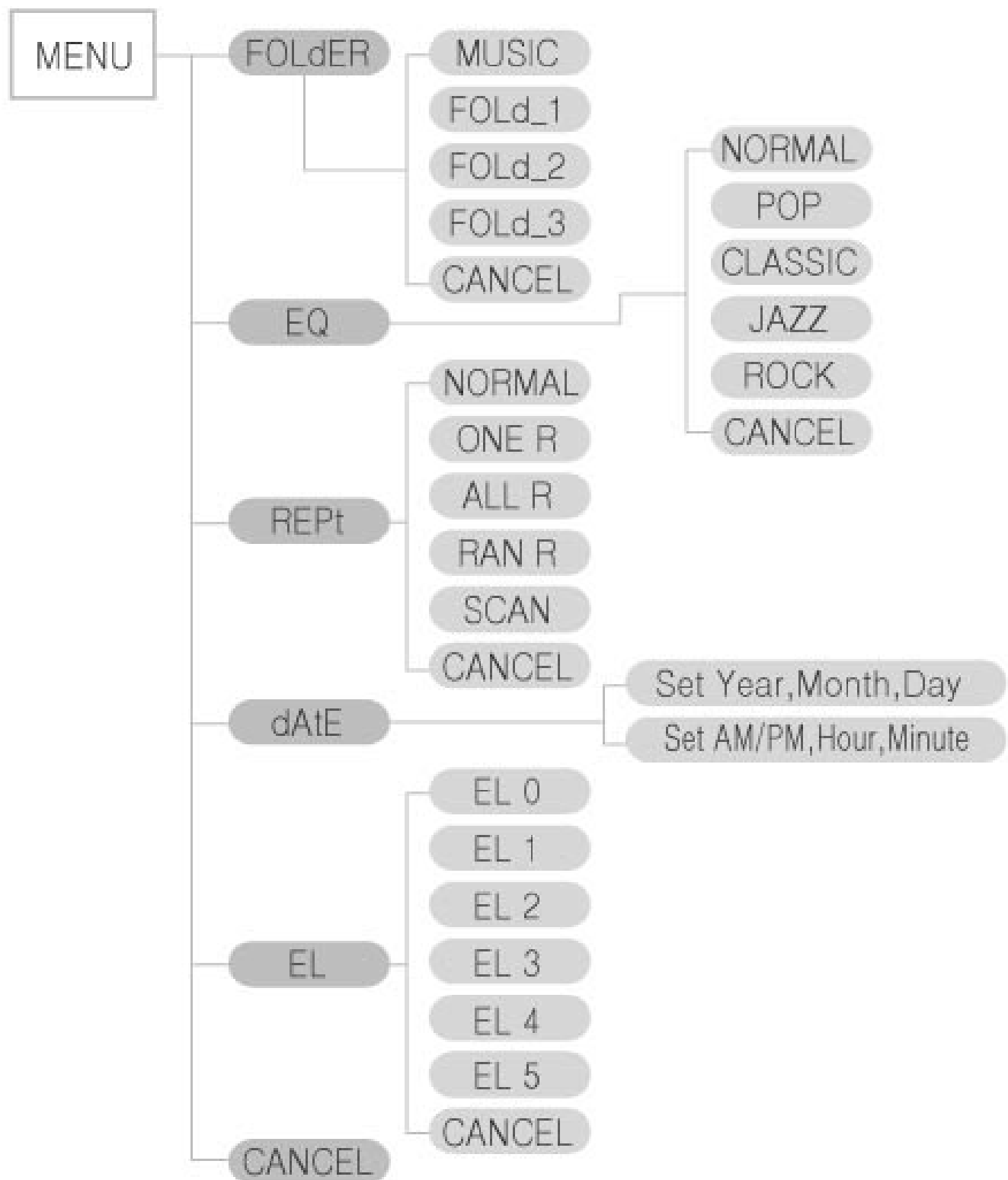
* MP3 mode

NAME	operating	stop	playback
 PLAY/STOP	short	playback start	playback stop
	long	power off	power off
 FF	short	move to next file	move and playback next file
	long	fast search to forward	fast forward and playback
 REW	short	move to before file	move and playback before file
	long	fast search to reverse	fast rewind and playback
 MENU	short	menu set	A↔B repet
	long	menu set	change EQ mode
 VOLUME+		volume up	volume up
 VOLUME-		volume down	volume down
 REC/STOP		recording start	
 ERASE		erase of current file	erase of current file



MENU Flow

* MENU flow in MP3 mode



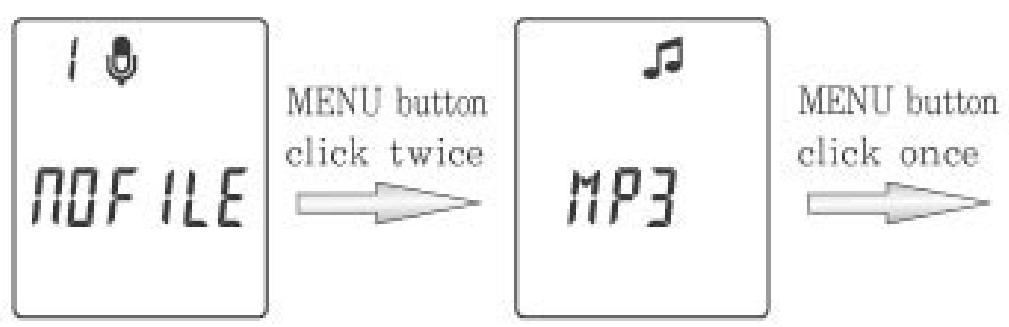
*CANCEL : Exit without select



Operating MP3

* Operating MP3 Function

- MP3 function will be AUTO OFF with no button pressing for 1 minute after POWER ON.
- 1. Getting to start MP3 function
 - Let HOLD switch OFF position and let the unit POWER ON.
 - Normally you'll start the unit with VOICE function, however if the unit is set to MP3 before POWER OFF, you'll start the unit with MP3 function.
(You can choose a function with MENU button during POWER ON)



2. Setting the clock

- Please refer to VOICE function.

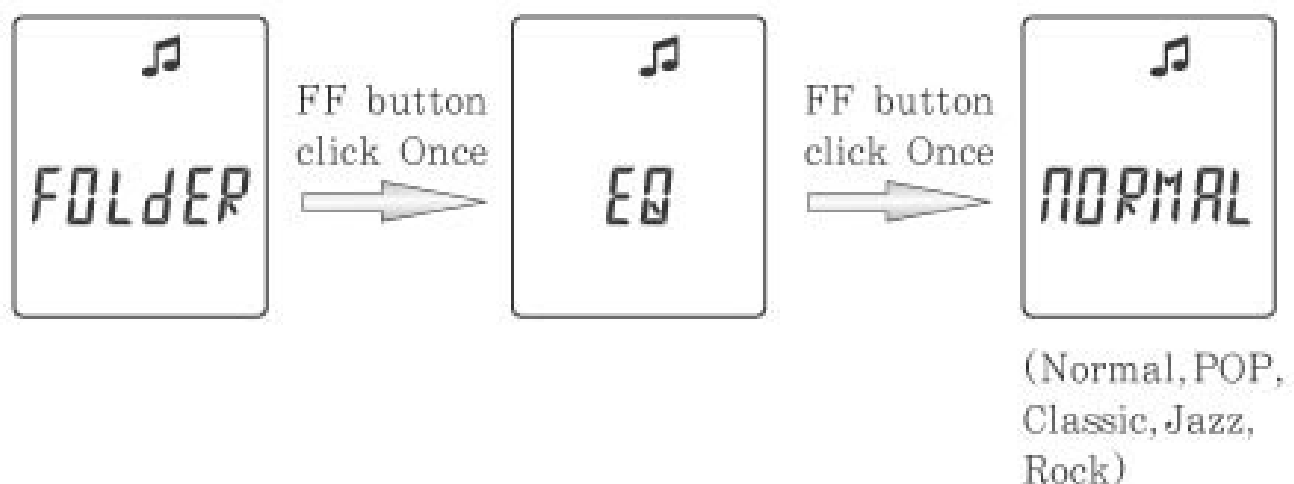
3. Setting the menu

- If you press MENU button, the unit will be operated as follow.



Operating MP3

- The LCD displays as below the picture and please select EQ by FF/REW button.
- Confirm the set EQ by pressing MENU button once more. And then you can select your favorite EQ mode by FF/REW button and press MENU button.
- CANCEL means EXIT without select in the setting EQ mode.
- Without your setting MENU, all concerned MENU will be set automatically only with a button pressing.



4. Playing MP3 file

- Press PLAY button shortly at STOP mode.
- Stop on playing
: Press PLAY/STOP button one more time.
- Repeat
: Regarding its display, please refer to VOICE function.
(Setting REPET function is available only at PLAY mode)
- Scan play
: Please refer to VOICE function.



Operating MP3

5. Converting to voice recorder

- If you press REC/STOP button at MP3 function, the unit will be converted to VOICE function, which will be started recording.

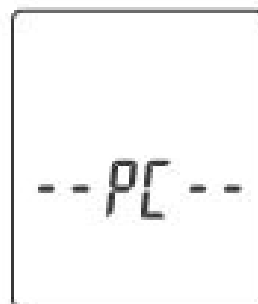
*MP3 has no EDIT function.

*MEMORY FULL DISPLAY & ERASE function are the same as VOICE function.

*The transmission BIT RATE for playing MP3 file is 16Kbps~320Kbps.

6. PC Interface

- While USB cable is connected, "-- PC --" is displayed on LCD, and only PC INTERFACE is available (no other functions operate). When you disconnect the cable from a PC and the unit, the unit gets POWER OFF.





Sky Manager installation manual

* Connecting to a Computer

You can send voice recordings to your computer or vice versa. You can also transfer e-mail with play, edit, and voice attachments.

Refer to the help message in “Sky Manager” for further details.

– To install Sky Manager

You need to first install the “Sky Manager” on to your computer to connect the voice recorder to your computer and utilize the related functions.

– System requirements

Computer: Pentium or IBM compatible system with USB support

Memory: 64MB or higher

OS: Windows 98SE/Me/2000/XP

Hard Disk: At least 100M of free disk space

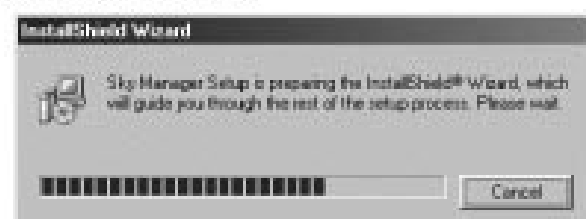
Playback: Soundcard, speaker

Recording: Soundcard, microphone

Insert the “Sky Manager” CD into your computer’s CD-ROM drive and the installation window will be displayed.

If the installation window does not appear, double click on MY COMPUTER → CD-ROM → SETUP.EXE.

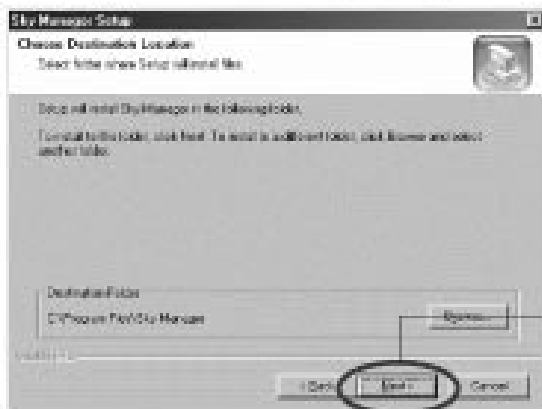
The installation window should then appear.



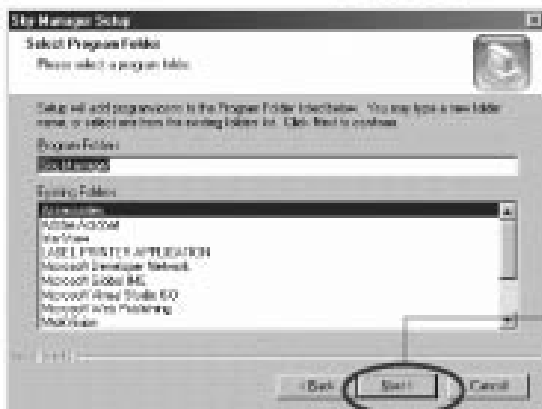
Sky Manager installation manual



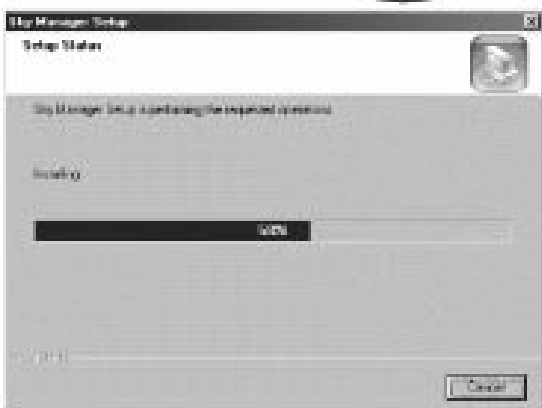
Click



Click



Click



Please, wait till
the installation is
completed.

Sky Manager installation manual



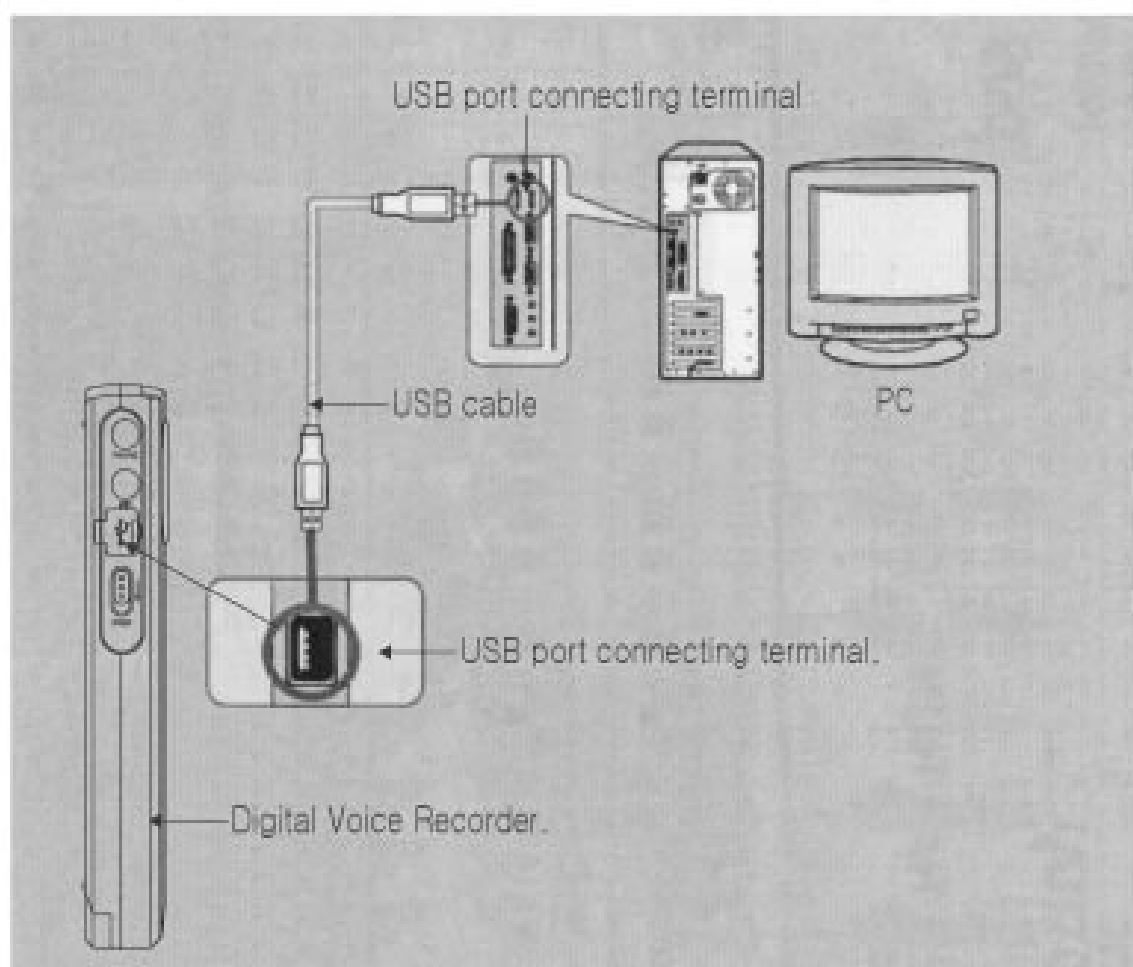
Installation is finished,
and the short-cut icon
appears on the desktop.

- To remove Sky Manager
Click Start → Set → Control Panel →
Program Add/Deletion.



* Connecting the voice recorder to your Computer

Use Sky Manager to connect the voice recorder to your computer. This will allow you to properly utilize recorded messages using the full range of functions.



"Connctet" will appear on the window if you connect the recorder to PC.

Click the connect icon if the "connect" will not appear on the window. If the "connect" icon is not activated, install the USB Drivers manually.



Sky Manager installation manual

* Drive installation

If PC doesn't recognize Voice Recorder after Sky Manager is installed, add New Hardware Wizard window appears. In that case, please follow the steps.



Click



Click

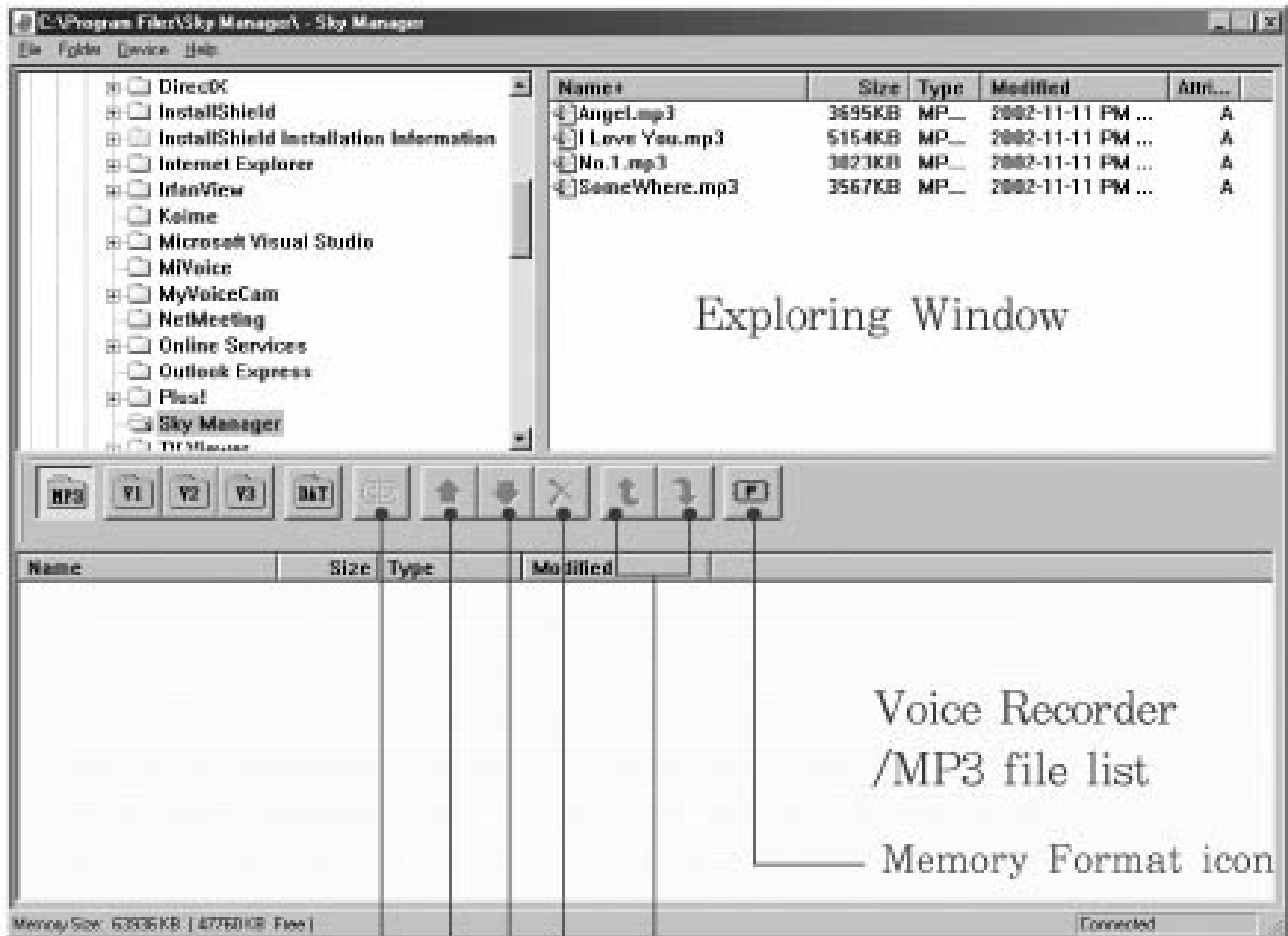
*주의 : CD-ROM 드라이브에 제품 CD가 꼭 들어있어야 합니다.

Sky Manager installation manual



Using the Sky Manager

* Sky Manager startup window and basic icons



Exploring Window

Voice Recorder
/MP3 file list

Memory Format icon

Change file order icon

Delete icon

Download icon

Upload icon

Connect icon



MP3 folder

Voice folder

DATA folder

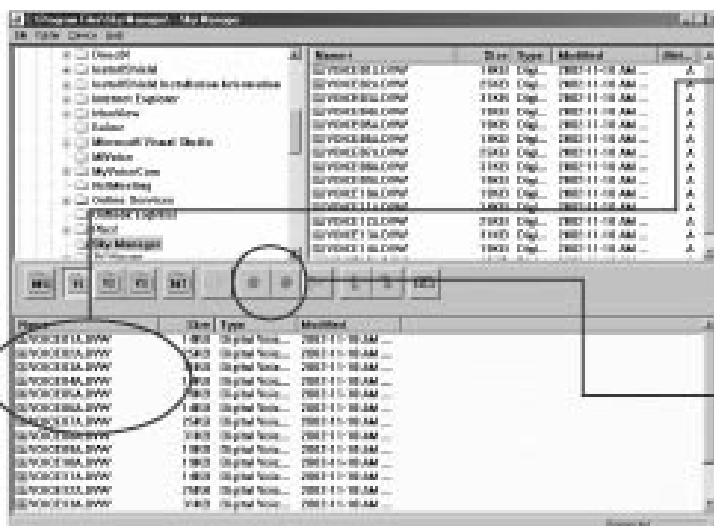
Using the Sky Manager

* File Copy

You can Up and Down-load the MP3 or recorded message file from to PC using an each button on main screen of Sky Manager.

Also you can copy the file that you want by mouse Drag & Drop on screen. (It maybe illegal to down load MP3 files to your Voice Recorder from on-line link sites)

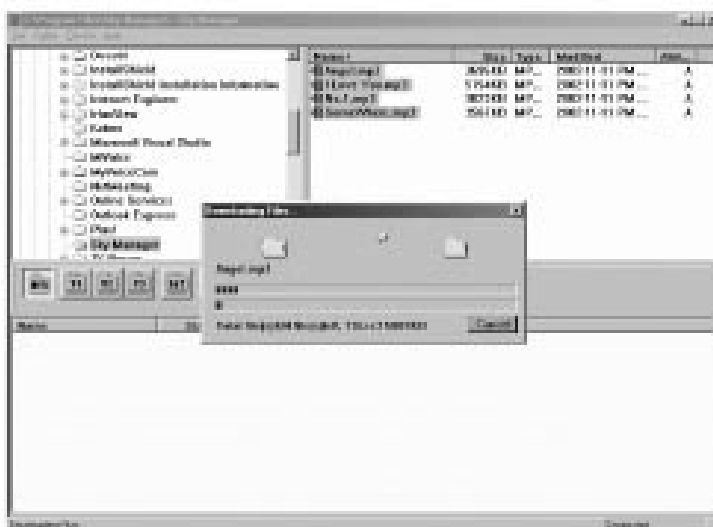
-Store recorded voice file to PC



*Select file and drag & drop to upper window

*Also you can up & down load the file using this icon.

*Copying(store) selected file to PC or vice versa.



*Stored to PC under directory

C:\Program

Files\Sky Manager

Voice data

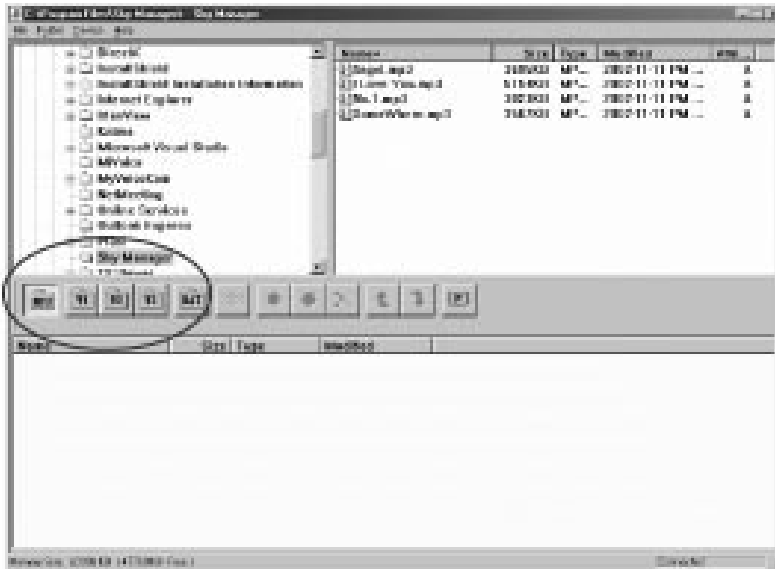
*You can change the stored directory to one you want.

*Recording is possible up to 297 files.

(If the file name of MP3 is too long, it can't be recorded up to 297 files)

Using the Sky Manager

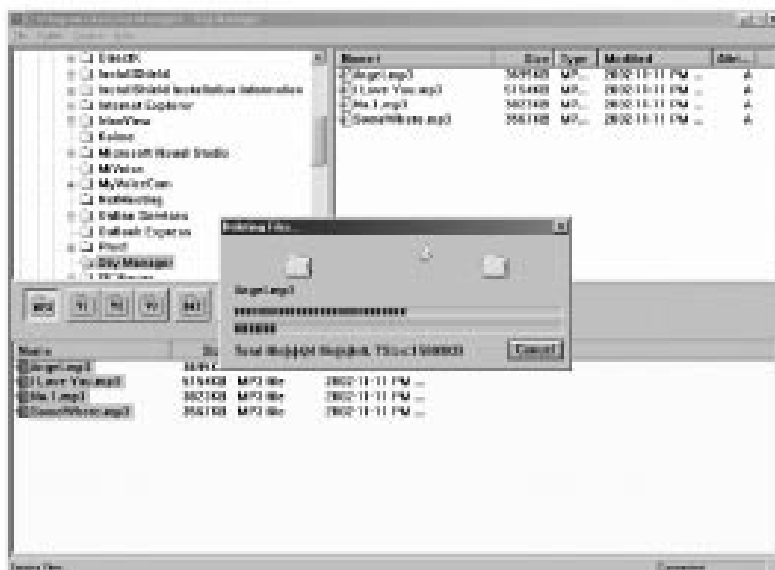
* Checking the files in folder



*Only MP3 files are stored to music folder
Recorded Voice file are stored to file folders(V1/V2/V3) automatically.

*Others files (no MP3 & voice files) are stored to DAT folder.

* File Delete

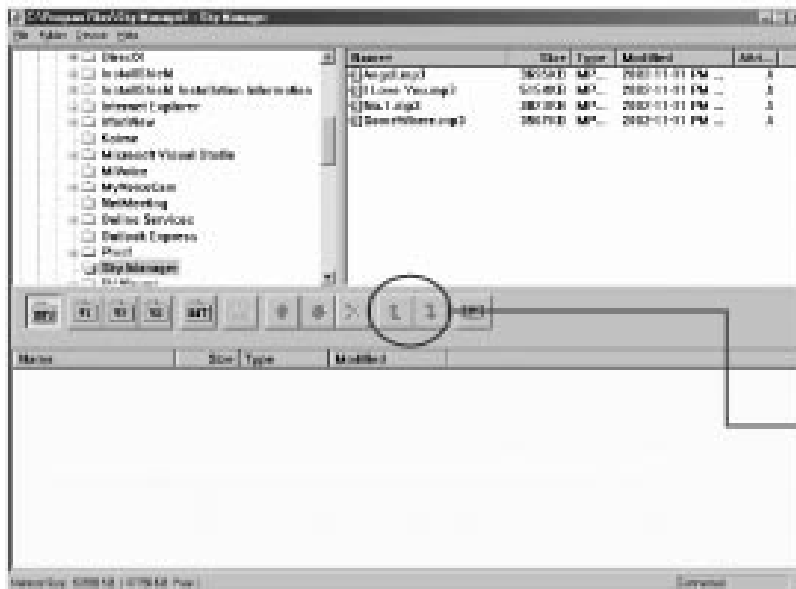


*Select file

*Click the delete (X) icon.

Using the Sky Manager

* Change file order



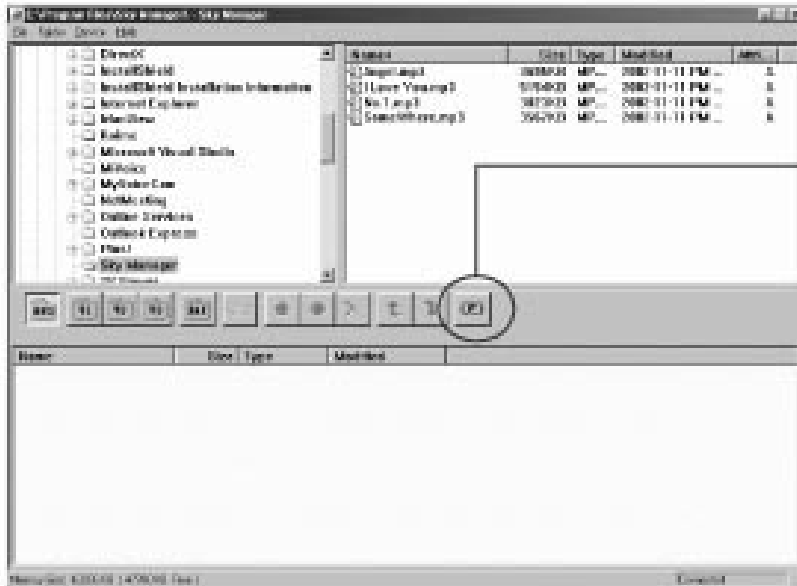
*Change file order icon.

Name	Size	Type	Modified
Angel.mp3	3695KB	MP3 file	2002-11-11 PM 01:30
I Love You.mp3	5154KB	MP3 file	2002-11-11 PM 01:30
No.1.mp3	3023KB	MP3 file	2002-11-11 PM 01:30
SomeWhere.mp3	3567KB	MP3 file	2002-11-11 PM 01:30

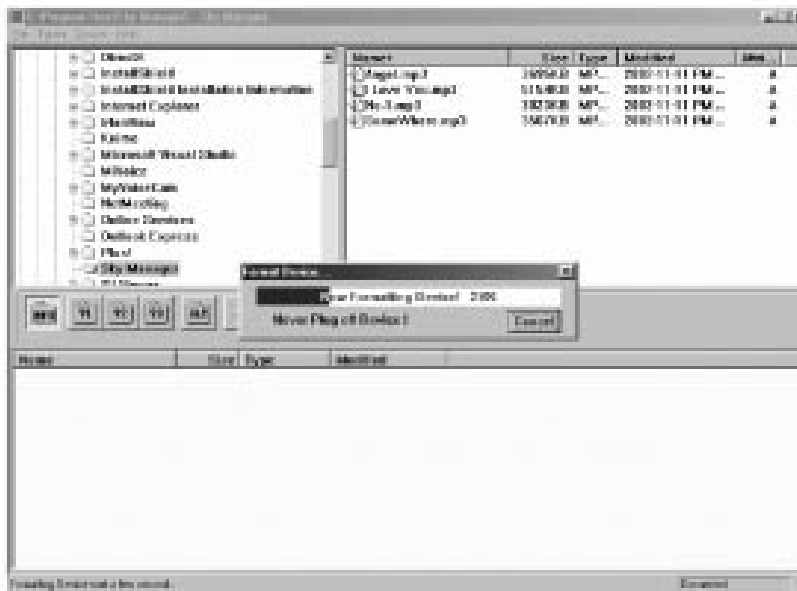
Name	Size	Type	Modified
Angel.mp3	3695KB	MP3 file	2002-11-11 PM 01:30
No.1.mp3	3023KB	MP3 file	2002-11-11 PM 01:30
I Love You.mp3	5154KB	MP3 file	2002-11-11 PM 01:30
SomeWhere.mp3	3567KB	MP3 file	2002-11-11 PM 01:30

Using the Sky Manager

* Memory format on PC



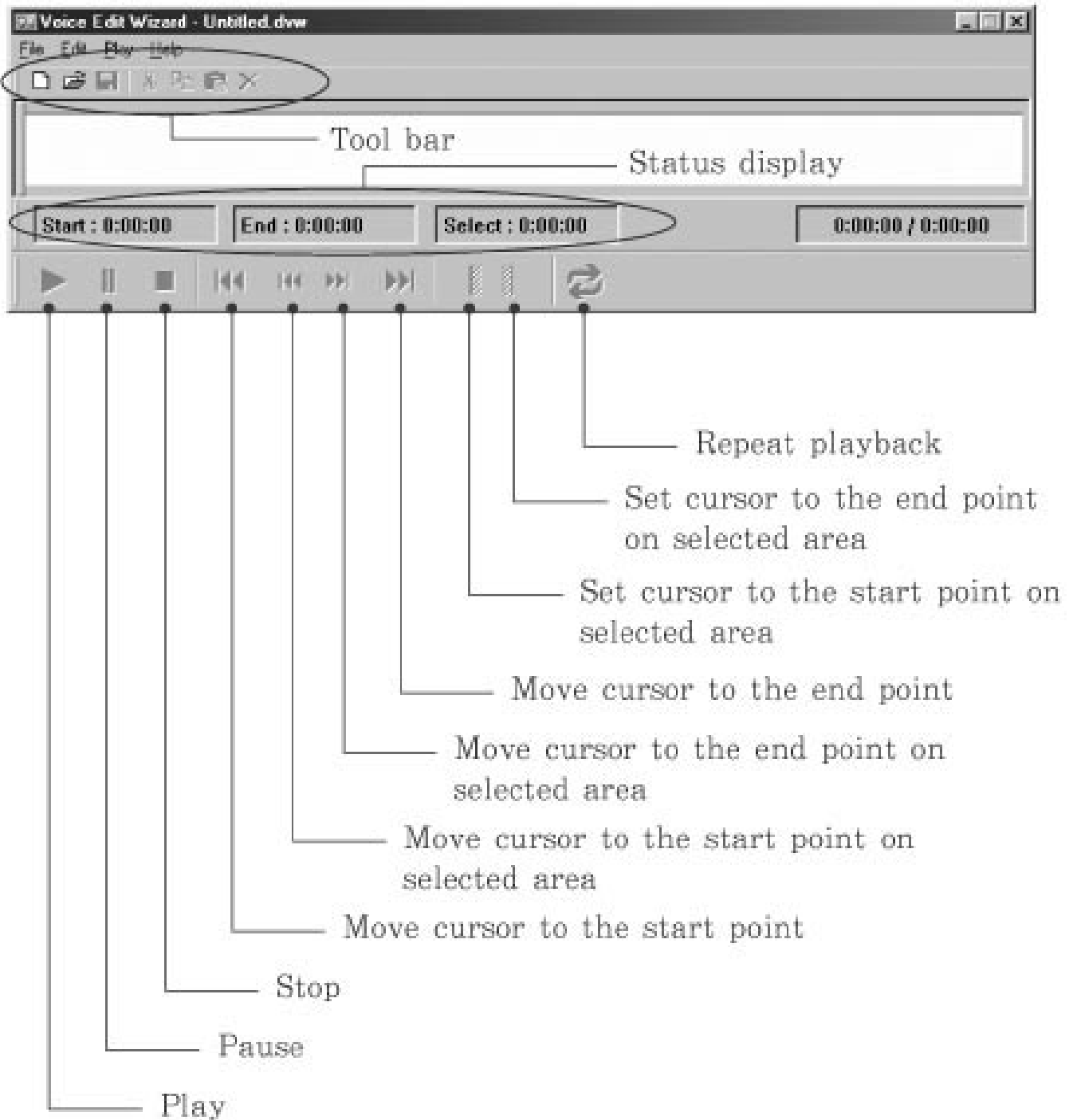
*Click memory format icon



*All of files are deleted on Voice Recorder when you execute format action.

Voice Edit Wizard

* Voice Edit Wizard startup window and basic icons





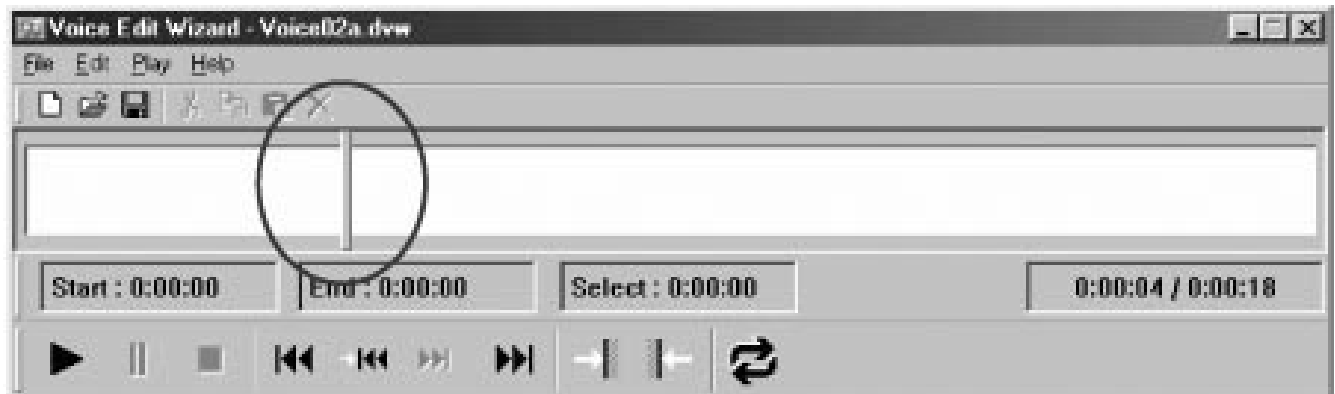
Using the Voice Edit Wizard

* Playback

1. Open a recorded file that you want.



2. Set cursor that you want location.



3. Click the playback icon().



Using the Voice Edit Wizard

* File divide



1. You can cut, copy or delete the selected portion of the file using  and  icons.



2. You can save the selected portion to the other file name.

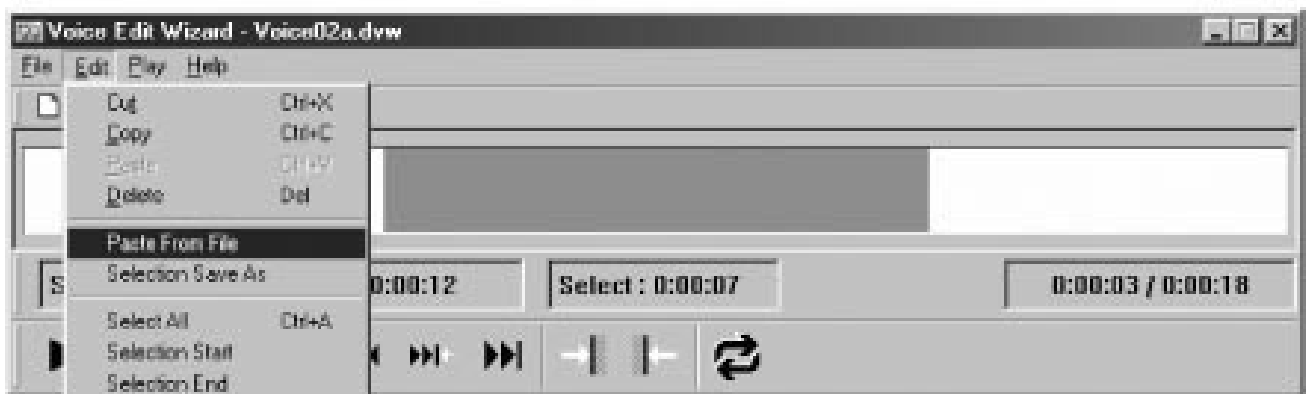


Using the Voice Edit Wizard

* File merge



1. You can merge in the selected portion of the file using  and  icons.



2. Attach in the selected location that you want file.



Cautions

* Cautions in Operating

1. Do not drop the product and give it a shock.
It could cause troubles.
2. Do not place the product at the following condition and/or places :
 - Where it is full of high temperature above 60 degrees.
 - At a dusty place.
 - Near the heaters or from any type of heat sources.
 - In a car with windows closed, especially in summer.
 - At a heavy damp place like a bathroom
3. Any excessive force on the LCD display could cause damages to it and to over all LCD functions.
4. A magnetic card such as a credit card or subway communication ticket may not be working any longer once it is placed on or close to the speaker.
5. The seller holds no liability for any damages caused by misuse of the product and any claims from the third party.
6. The seller holds no liability for any lost messages which are caused by repair or any other troubles.



Cautions

* Cautions in Using Battery

1. Do not have a short circuit, disassemble, heat or put battery in the fire. and do harm to your eyes, also could cause fever and the rupture a doctor.
2. Do not use different kind of battery.
3. Take the battery off when you don't use for a long time.

* Cautions for Safety

1. Take battery off when there are malfunction caused by smoke and heat.
2. Do not use in the place where electronic product's operation is prohibited like inside of air plane.
3. Do not use in driving and walking, since any accident could be happened.

Specification

* For improvement of product, specifications & design can be changed without previous notice

ITEM	SPECIFICATION	
Model Number	DMR-1618	DMR-1635
Max. Recording Time(LP)	1080 minutes	2160 minutes
Max. Recording Time(SP)	540 minutes	1080 minutes
Max. Recording Time(HQ)	270 minutes	540 minutes
Max. File No to REC	3Folders x 99 File	
Max. Output Power	50mW at THD 10%	
Input	Built in MIC & Mono Jack	
Output	Built in Speaker & Stereo Jack	
Loud Speaker	Dynamic 20mm	
Dimensions	30(W) x 107(H) x 17 (D)mm	
Weight	30g (without battery)	
Memory Medium	Built in Flash Memory	
Power Source	1.5V, "AAA"alkaline x 2	
Battery Life Time	Recording : 12hrs/Playback : 14hrs	
Condition to use	0°C~40°C	
Basic Accessory	User's Manual, Earphone, 2AAA battery,USB Cable, Install CD	
Optional Accessory	Telephone Adapter, Phone Connecting Cable, Audio Cable, External Pin MIC, Hand Strap	