



FCC Information

This device complies with Part 15 of the FCC Rules. Operation is subject to the following two conditions:

- (1) this device may not cause harmful interference, and
- (2) this device must accept any interference received, including interference that may cause undesired operations.

This equipment has been tested and found to comply with the limits for a Class B digital device, pursuant to part 15 of the FCC Rules. These limits are designed to provide reasonable protection against harmful interference in a residential installation.

This equipment generates, uses and can radiate radio frequency energy and, if not installed and used in accordance with the instructions, may cause harmful interference to radio communications. However, there is no guarantee that interference will not occur in a particular installation. If this equipment does cause harmful interference to radio or television reception, which can be determined by turning the equipment off and on, the user is encouraged to try to correct the interference by one more of the following measures:

- Reorient or relocate the receiving antenna.
- Increase the separation between the equipment and receiver.
- Connect the equipment into an outlet on a circuit different from that to which the receiver is connected.
- Consult the dealer or an experienced radio/TV technician for help.

WARNING

Changes or modifications not expressly approved by the manufacturer could void the user's authority to operate the equipment.





Features

- * **EL Backlighting**

To be available for checking LCD display in dark place

- * **AUTOMATIC POWER OFF**

Power will be automatically off if there's no button pressing

- * **VOICE / MP3 FOLDER & DATA**

The unit can hold up Max. 99 voice recording files.

And you can also save MP3 files.

- * **TIME STAMP & REMAINING RECORDING TIME DISPLAY**

Recording time & Remaining time will be displayed.

- * **USB Interface**

To adopt USB standard, which is easy to set up and connect

- * **MP3 PLAY**

To be available for MP3 files

- * **EQ Function**

During MP3 play, you can enjoy NORMAL, POP, CLASSIC, JAZZ, ROCK modes.

- * **VOR (Voice Operated Recording) Function**

Recording will be proceeded only with voice and other actual sound.

- * **REPEAT Playback Function**

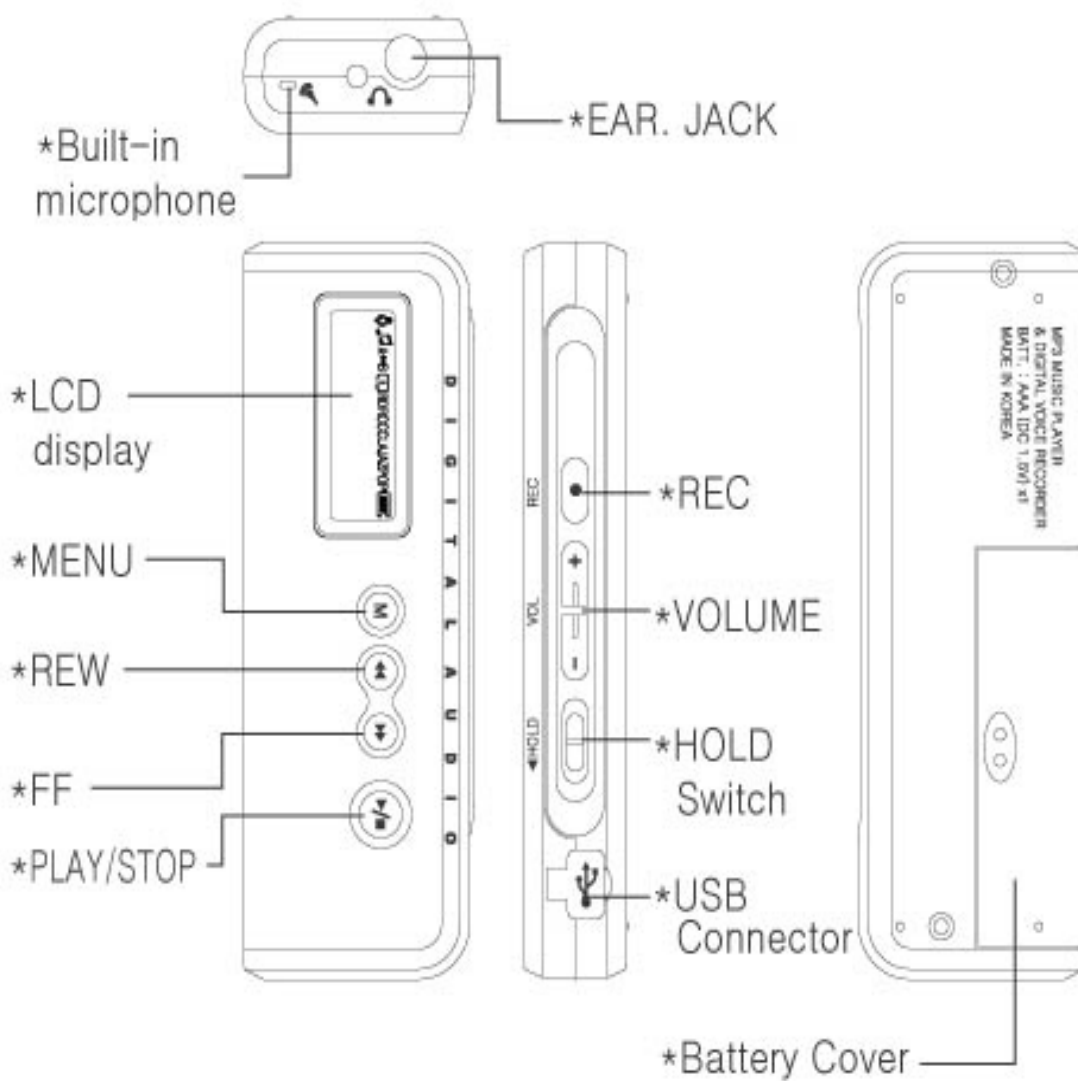
To be available for repeat playback

- * **SCAN Play**

To be available for playing only fore part of each message successively.

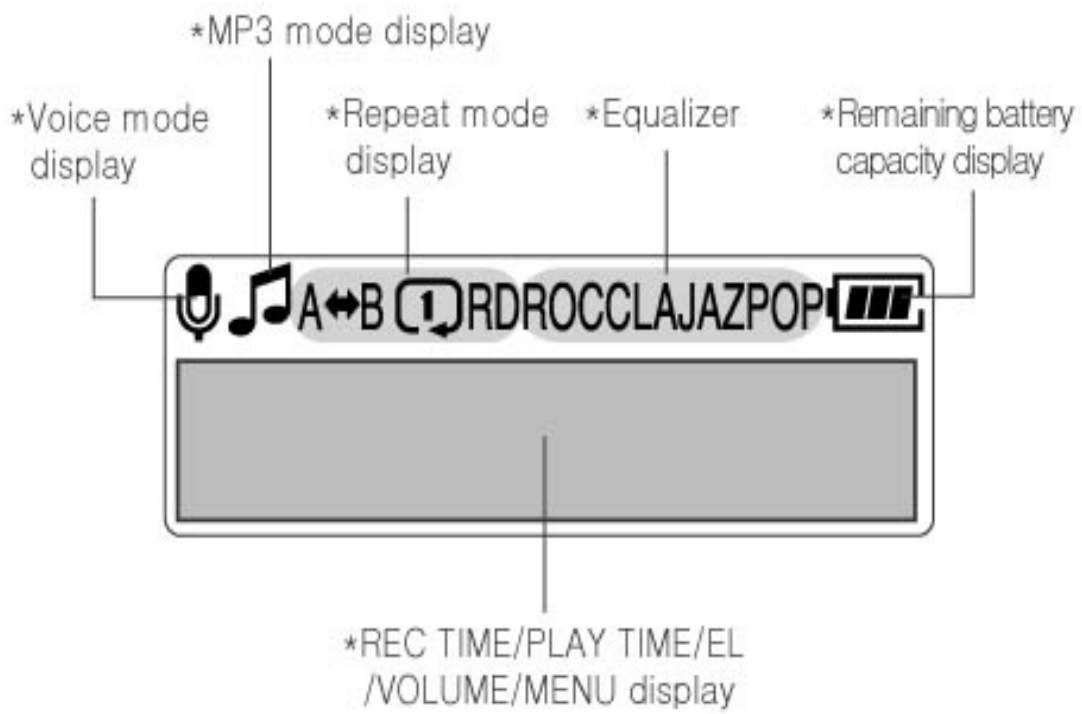


Name of each part





Name of each part



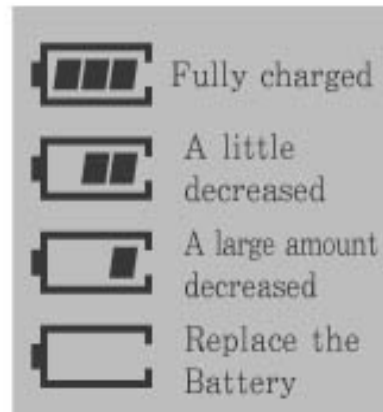
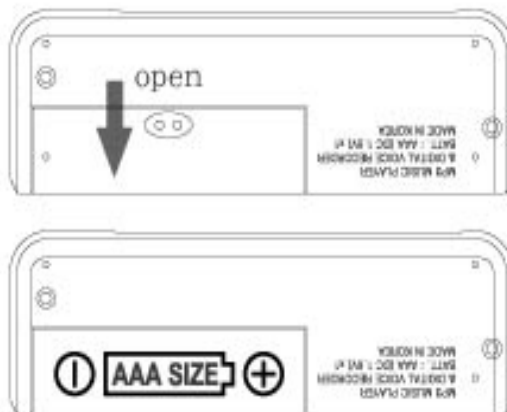


Preparation for operating

* BATTERY LOADING

Loading and replacing of the batteries should be done at stop position.

1. Open the battery cover and load a AAA typed alkaline battery in the compartment and then close the cover.



(Battery : AAA, LR03 or UM-4 or equivalent)

*Battery life time

Battery	at recording mode	at earphone playback
"AAA" Alkaline	for about 5 hrs	for about 6 hrs

For manager battery life time efficiently, the unit will be AUTO OFF during no-button pressing.

Please let HOLD switch ON position when you don't use the unit.


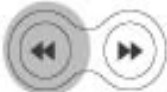




* Getting to Power On

Please set HOLD button OFF and press PLAY/STOP button. The unit will be powered on.



Description of button in Voice Recorder

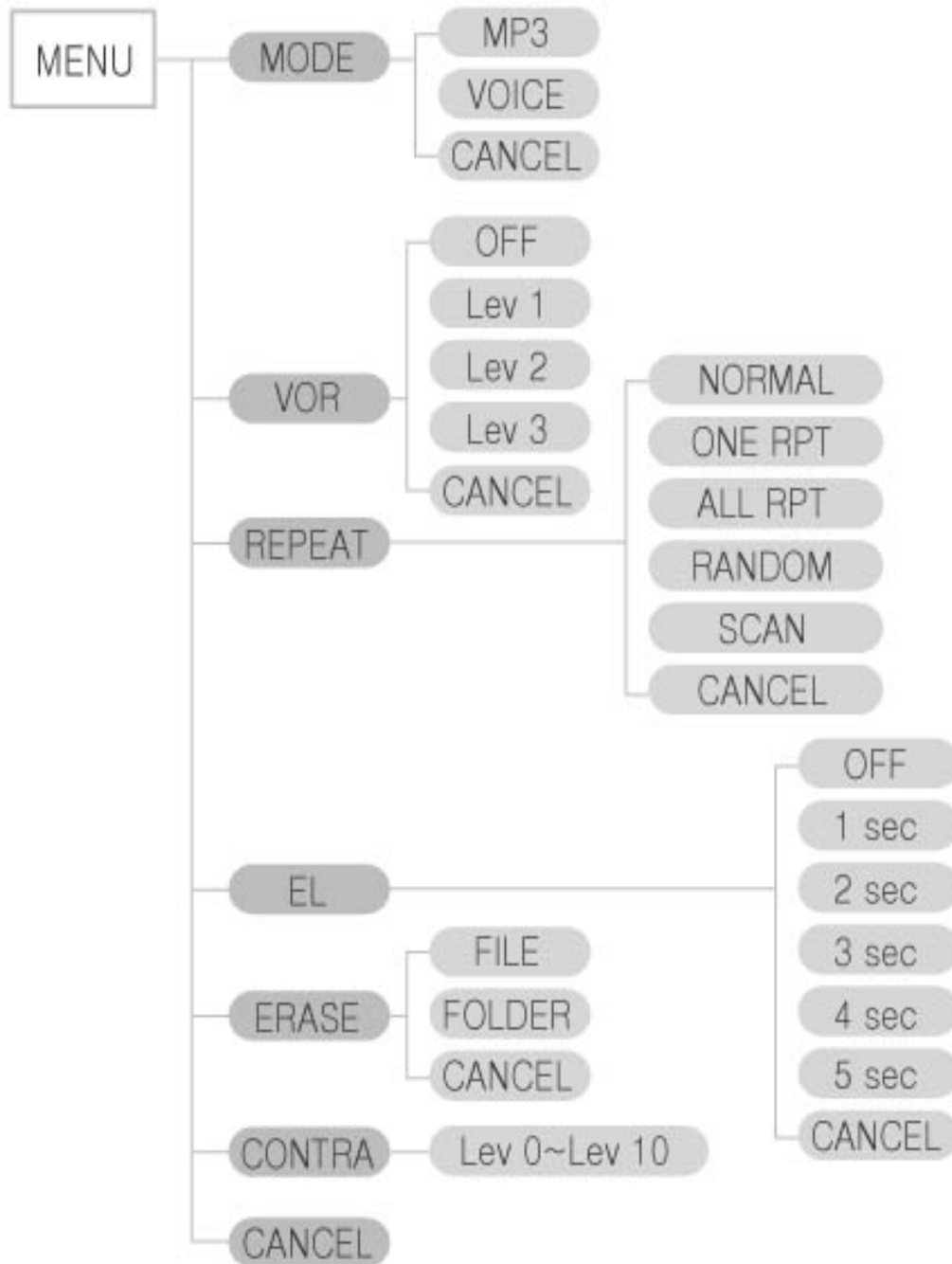
* Voice Recorder Mode ("long" : over 1 sec., "short" : under 1 sec.)

NAME	operating	STOP	Playback	Recording
 PLAY/STOP	short	playback start	playback stop	PAUSE
	long	power off	power off	
 FF	short	move to next file	move and playback next file	increase message number
	long	fast search to forward	fast forward and playback	
 REW	short	move to before file	move and playback before file	
	long	fast search to reverse	fast rewind and playback	
 MENU		menu set	A↔B repeat	remaining time display
 VOLUME+		volume up	volume up	
 VOLUME-		volume down	volume down	
 REC		recording start		recording stop



MENU Flow

* MENU flow in Voice Recorder mode



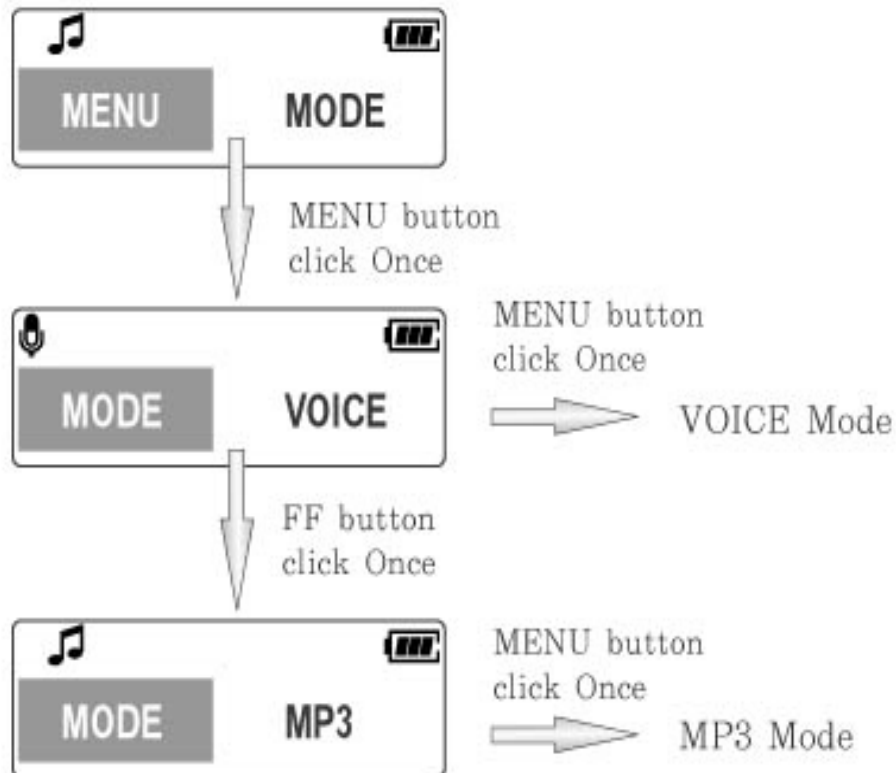
*CANCEL : Exit without selection



Operating Recorder

* MODE setting

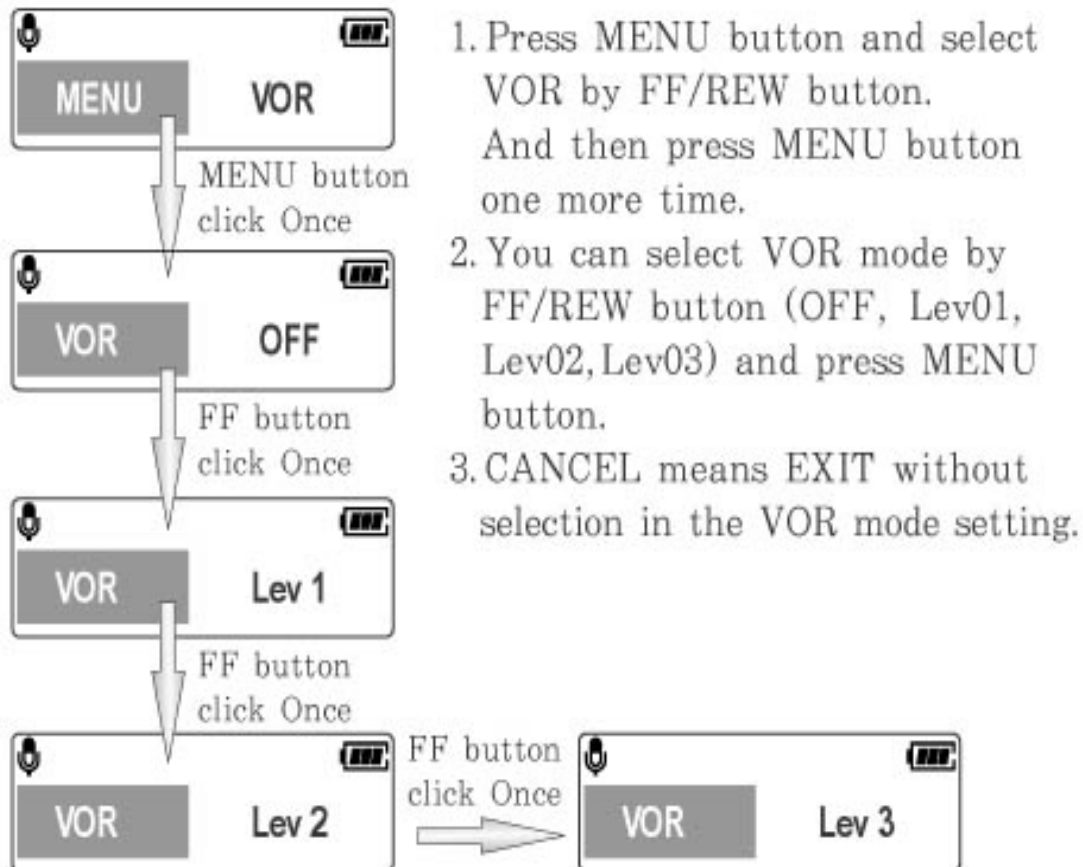
Press MENU button twice and select folder by FF/REW button, and then press MENU button one more time. You can record up to 99 messages in VOICE mode.





Operating Recorder

* Voice Operated Recording Function



If sound is lower than a certain level for 5 seconds, the unit will be automatically SILENT state. And if the unit detects sound that is higher than a certain level during SILENT state, the unit will be automatically restarted recording.

- VOR 0 : VOR function is Off

The unit will be continued recording without sound quantity.

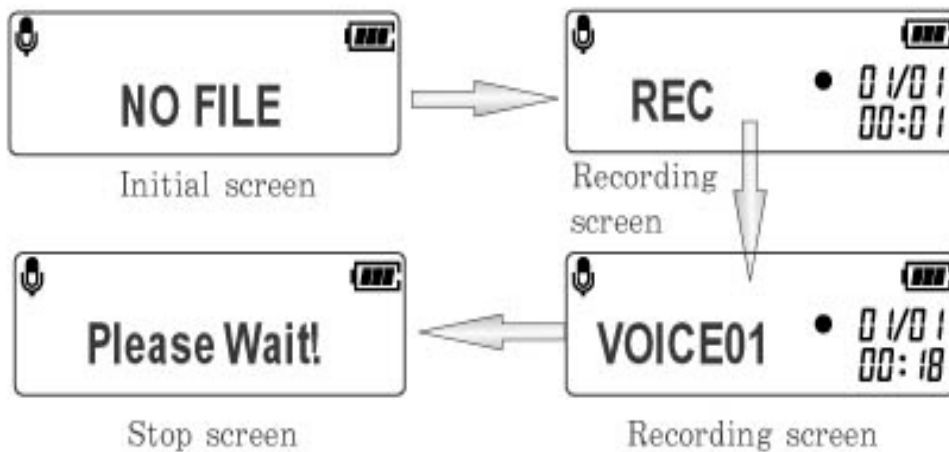
- VOR 1~3 : If the unit is set to VOR1, it will be released from the PAUSE state and restarted recording though very low sound is detected. As VOR level is higher, it needs the louder sound to release from SILENT state.



Operating Recorder

* RECORDING

1. Set HOLD button OFF and get the unit powered on.
2. Let MIC toward sound source and press REC button.
File number will be added and recording will be started.
3. To stop recording, press REC button one more time.



- *Please do test recording in advance to prevent from failing recording
- *If MEMORY is exhausted or file number gets more than 99 messages in one folder, "FULL" will be displayed and recording won't be continued.
- *VOLUME level won't be adjusted during recording.





Operating Recorder

* PAUSE

If you press PLAY/STOP button shortly during recording. Recording will be paused and if you press PLAY/STOP button once more, PAUSE will be released.



*If PAUSE mode continues for more than 10 minutes, the unit will be AUTO OFF.

* Recording Monitor

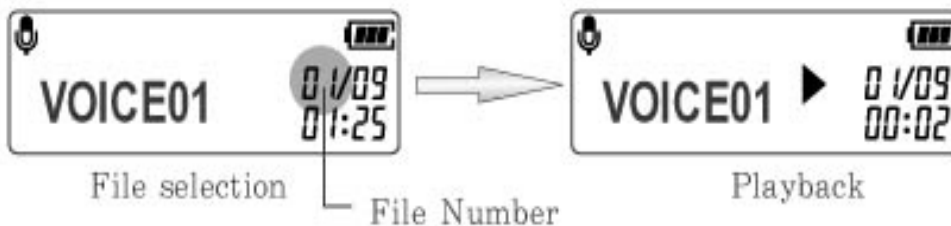
During recording, you can monitor recording message by inserting earphone into earphone jack.

* INDEX addition

If you press FF button during recording mode, file number will be added and recording will be continued.

* PLAYBACK

1. Set HOLD button OFF and get the unit powered on.
2. Select file number with FF/REW button.



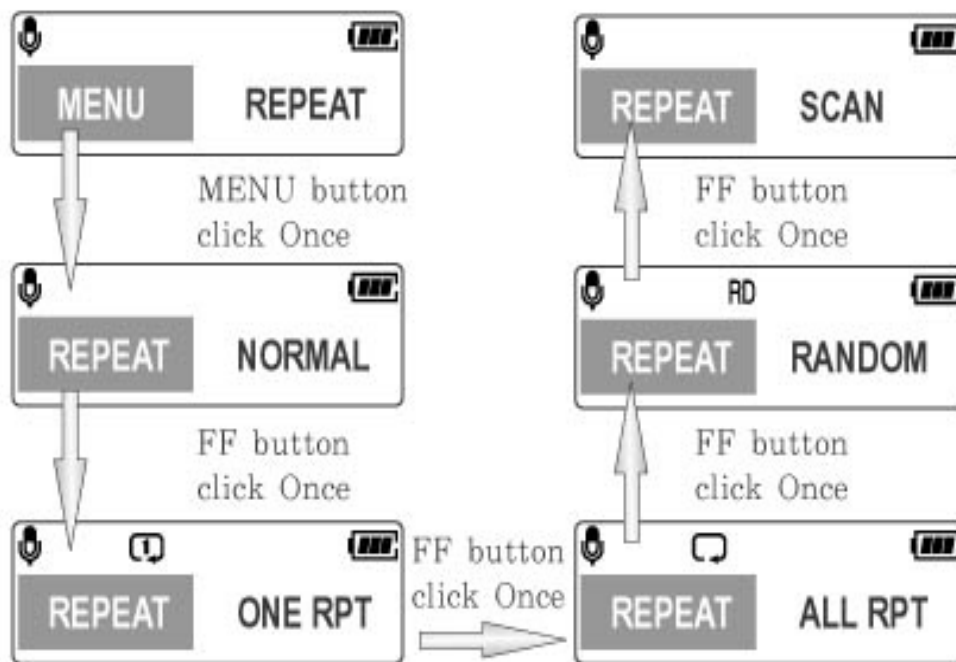
3. To start playback, press PLAY/STOP button.
 4. Adjust Volume level with VOLUME button.
 5. To stop PLAYBACK, press PLAY/STOP button one more time.
- *If you press PLAY/STOP button just after recording, the last recorded file will be played.



Operating Recorder

* FILE REPEAT

1. Press MENU button and select REPEAT by FF/REW button.
And then press MENU button one more time.
2. You can select your hope REPEAT mode by FF/REW button (NORMAL, ONE RPT, ALL RPT, RANDOM, SCAN) and press MENU button.
3. CANCEL means EXIT without selection in the REPEAT mode setting.



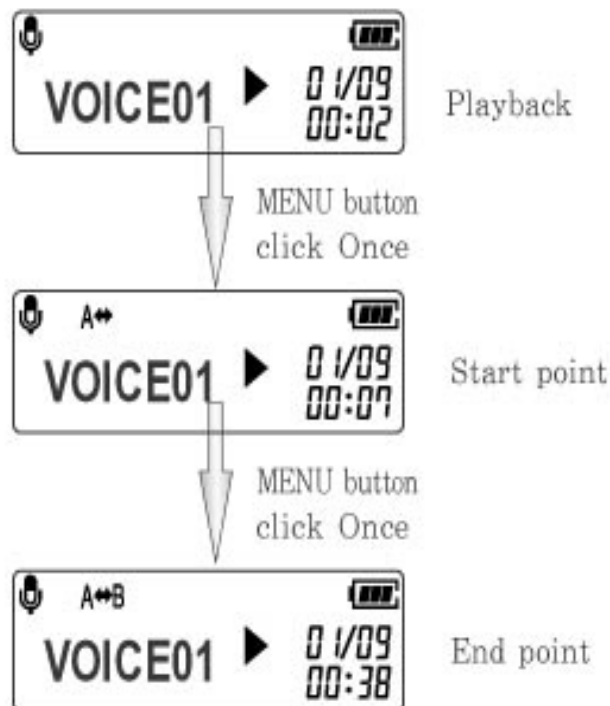
- NORMAL : All files will be played in order and stop.
- ONE RPT : Only selected file will be repeated.
- ALL RPT : All files will be repeated in order.
- RANDOM : All files will be randomly repeated.
- SCAN : The fore part of each file will be played for 5 seconds in order.



Operating Recorder

* A-B section REPEAT

1. If you press MENU button one time shortly during PLAYBACK mode, point A will be selected.
2. And please press MENU button one more time, point B will be selected.
3. A-B section will be repeated.
4. If you press MENU button once more, A-B section repeat will be released.

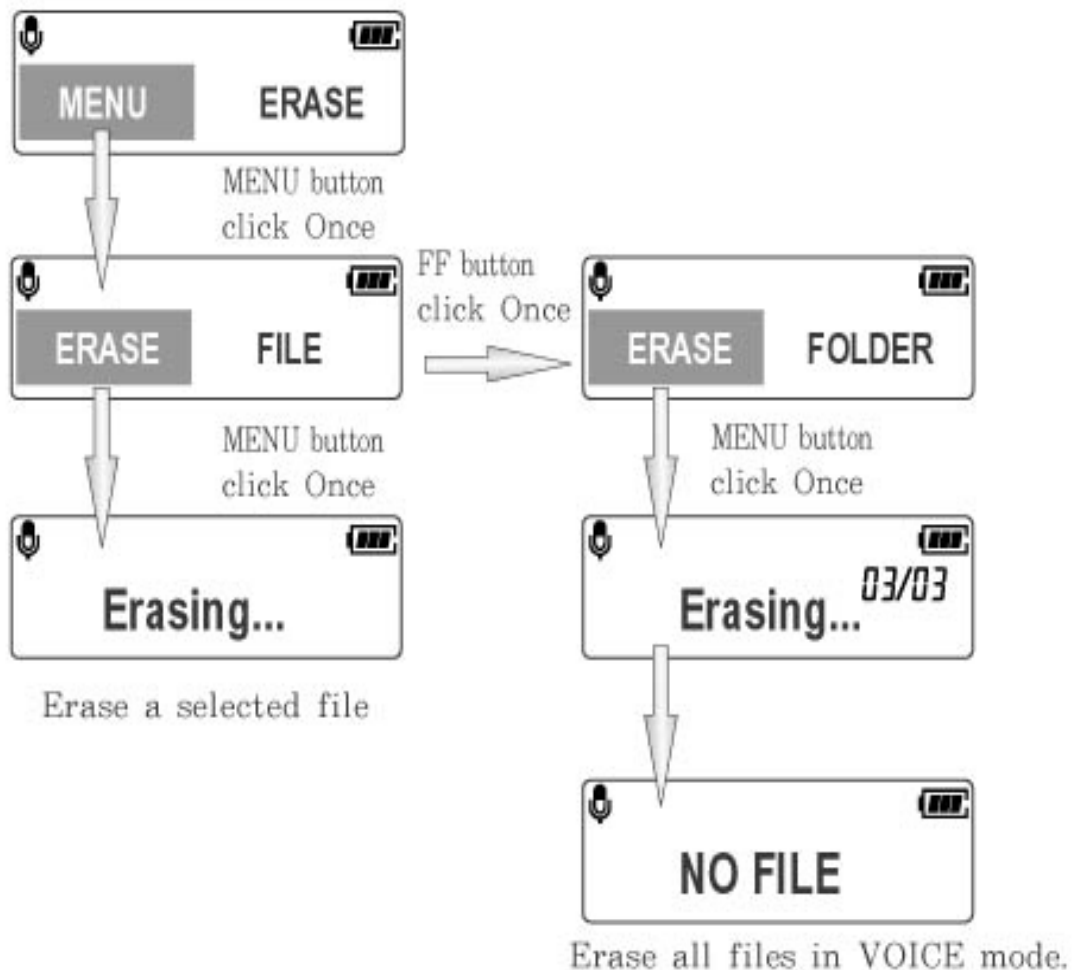




Operating Recorder

* Erasing the recorded file

1. If you select a file by FF/REW button at STOP mode
2. If you press ERASE button one more time, the selected file will be erased and following file number. will be changed as current file number.

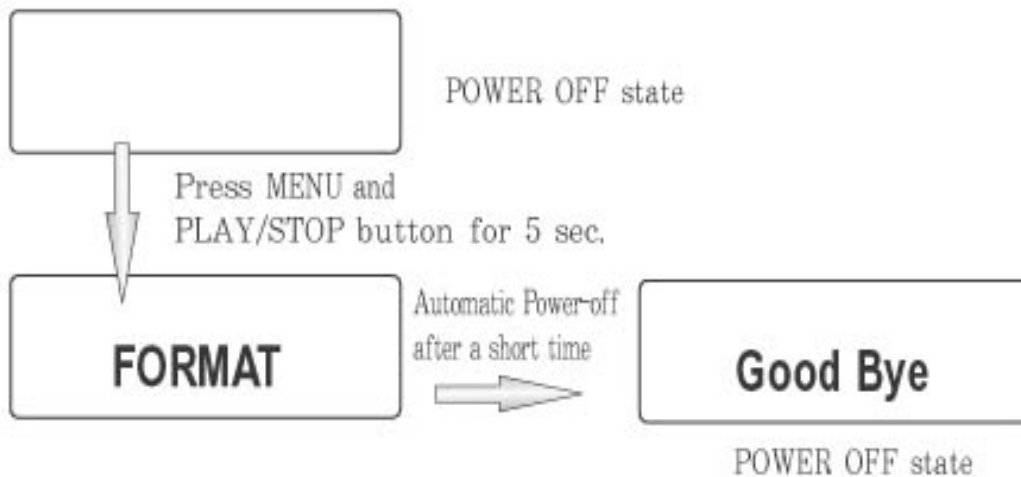




Operating Recorder

<Format>

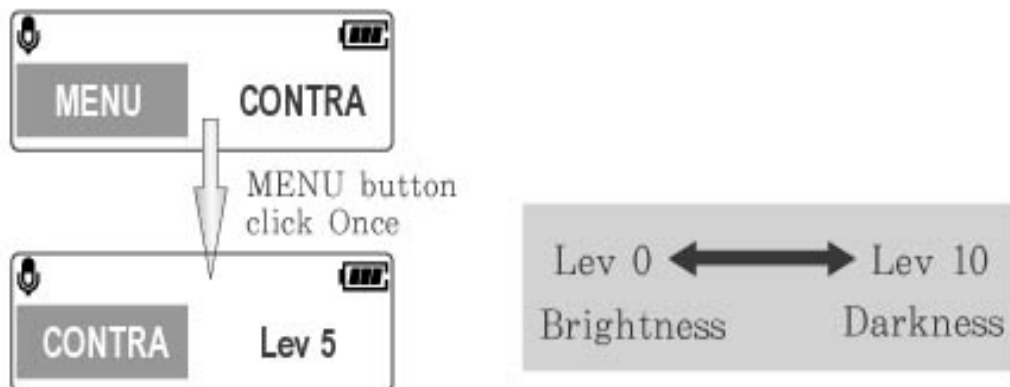
1. If you press MENU and PLAY/STOP buttons for more than 5 seconds at POWER OFF state, "FORMAT" will be blinking on LCD.
2. And then all recorded files will be erased.



*At FORMAT mode, all files will be erased.

* CONTRAST





You can control LCD contrast.





Description of button in MP3

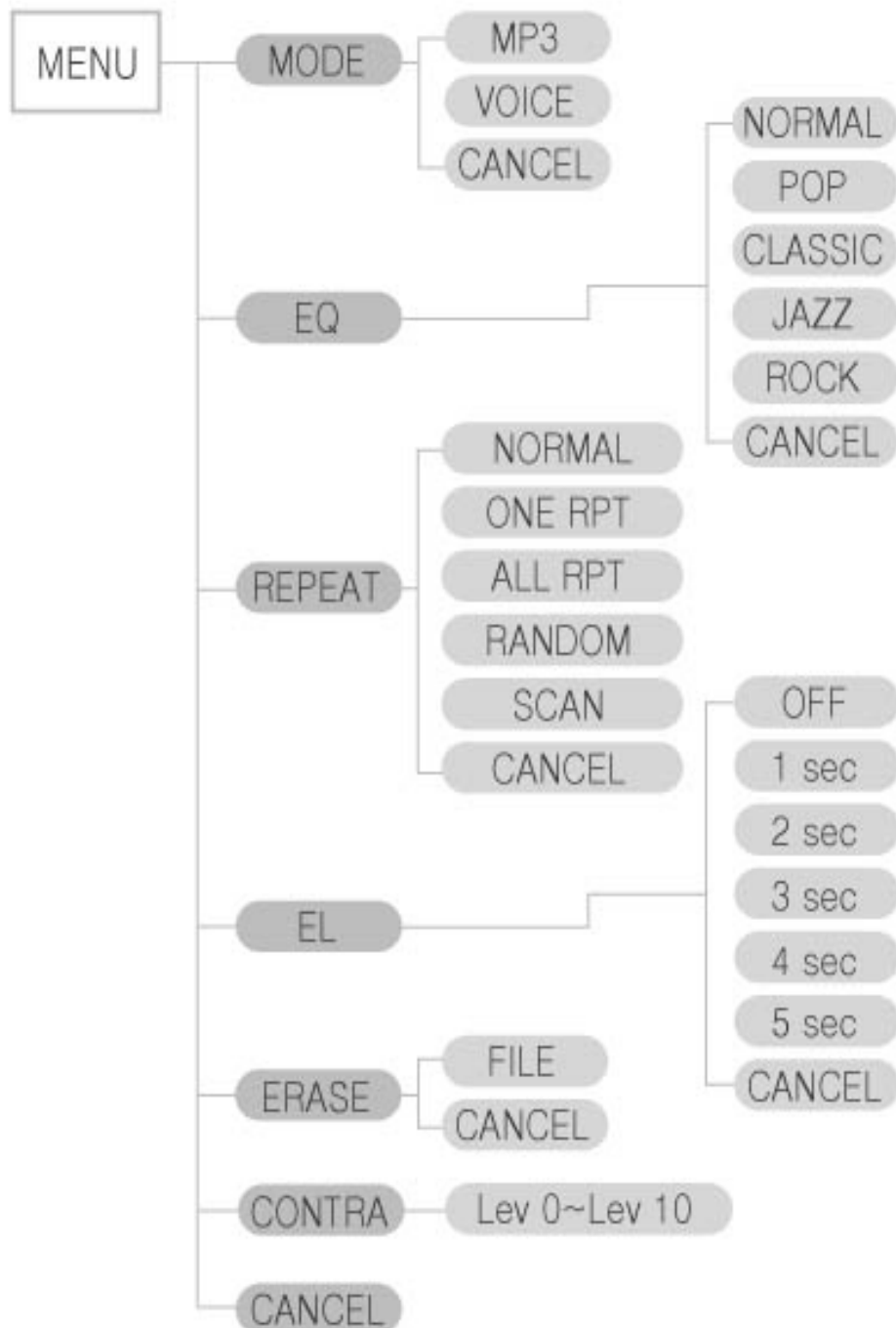
* MP3 mode

NAME	operating	stop	playback
 PLAY/STOP	short	playback start	playback stop
	long	power off	power off
 FF	short	move to next file	move and playback next file
	long	fast search to forward	fast forward and playback
 REW	short	move to before file	move and playback before file
	long	fast search to reverse	fast rewind and playback
 MENU	short	menu setting	A↔B repeat
	long	menu setting	change EQ mode
 VOLUME+		volume up	volume up
 VOLUME-		volume down	volume down
 REC		recording start	



MENU Flow

* MENU flow in MP3 mode



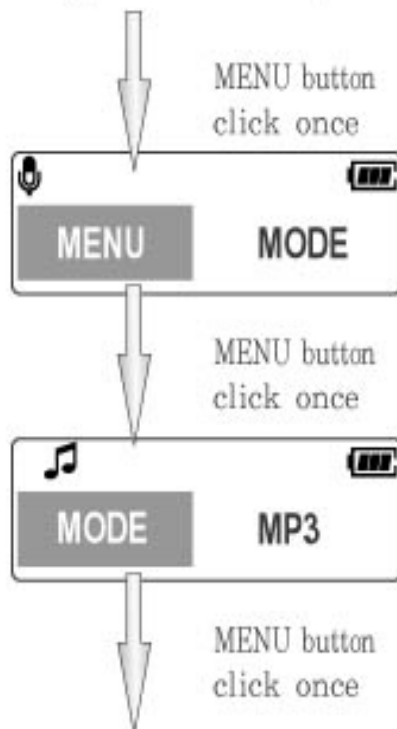
*CANCEL : Exit without selection



Operating MP3

* Operating MP3 Function

- MP3 function will be AUTO OFF with no button pressing for 1 minute after POWER ON.
1. Getting to start MP3 function
- Let HOLD switch OFF position and let the unit POWER ON.
 - Normally you'll start the unit with VOICE function, however if the unit is set to MP3 before POWER OFF, you'll start the unit with MP3 function.
(You can choose a function with MENU button during POWER ON)



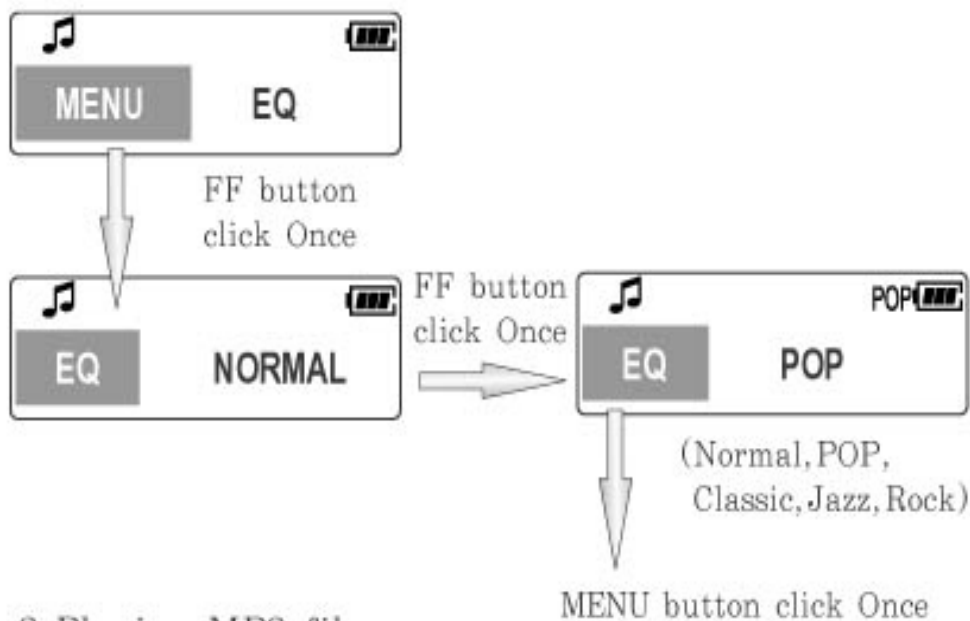
2. Setting the menu

- If you press MENU button, the unit will be operated as follow.



Operating MP3

- The LCD displays as below the picture and please select EQ by FF/REW button.
- Confirm the set EQ by pressing MENU button once more. And then you can select your favorite EQ mode by FF/REW button and press MENU button.
- CANCEL means EXIT without selection in the EQ mode setting.



3. Playing MP3 file

- Press PLAY button shortly at STOP mode.
- Stop on playing
 - : Press PLAY/STOP button one more time.
- Repeat
 - : Regarding its display, please refer to VOICE function. (Setting REPET function is available only at PLAY mode)
- Scan play
 - : Please refer to VOICE function.



Operating MP3

4. Converting to voice mode

- If you press REC button at MP3 function, the unit will be converted to VOICE function, which will be started recording.

*MP3 has no EDIT function.

*MEMORY FULL DISPLAY & ERASE function are the same as VOICE function.

*The transmission BIT RATE for playing MP3 file is 16Kbps~320Kbps.

5. PC Interface

- While USB cable is connected, "USB online" is displayed on LCD, and only PC INTERFACE is available (no other functions operate). When you disconnect the cable from PC or the unit, the unit gets POWER OFF.





Sky Manager installation manual

* Connecting to a Computer

You can transfer the recorded files to your computer or vice versa, and playback and edit the recorded files.

And you can also send e-mail with attach voice file.

Refer to the help message in "Sky Manager" for further details.

- To install Sky Manager

You need first install the "Sky Manager" on to your computer to connect the voice recorder with your computer and utilize the related functions.

- System requirements

Computer: Pentium or IBM compatible system with USB support

Memory: 64MB or higher

OS: Windows 98SE/Me/2000/XP

Hard Disk: At least 100M of free disk space

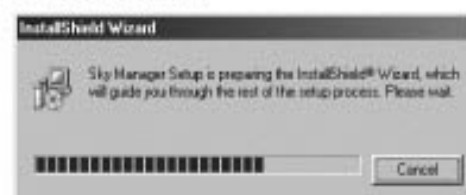
Playback: Soundcard, speaker

Recording: Soundcard, microphone

Insert the "Sky Manager" CD into CD-ROM drive of your comuter and the installation window will be displayed.

If the installation window does not appear, double click on MY COMPUTER → CD-ROM → SETUP.EXE.

The installation window should then appear.





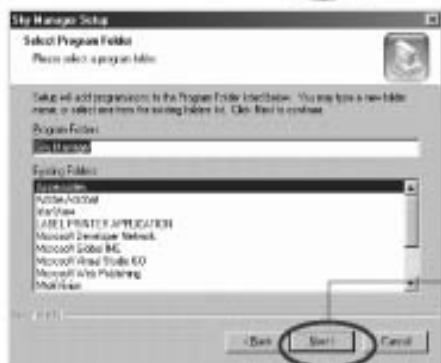
Sky Manager installation manual



Click



Click



Click



*Please, wait till
the installation is
completed.

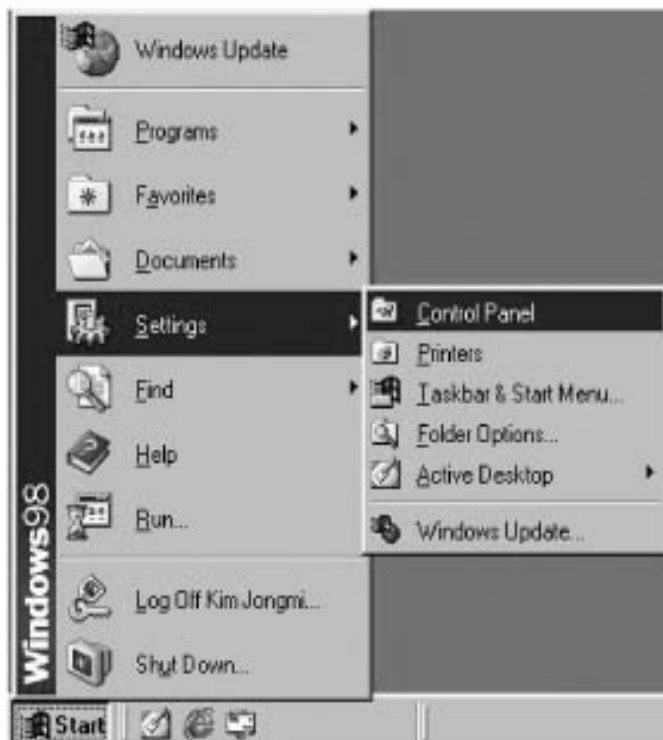


Sky Manager installation manual



*Installation is finished,
and the short-cut icon
appears on the desktop.

- To remove Sky Manager
Click Start → Settings → Control Panel →
Program Add/Deletion.

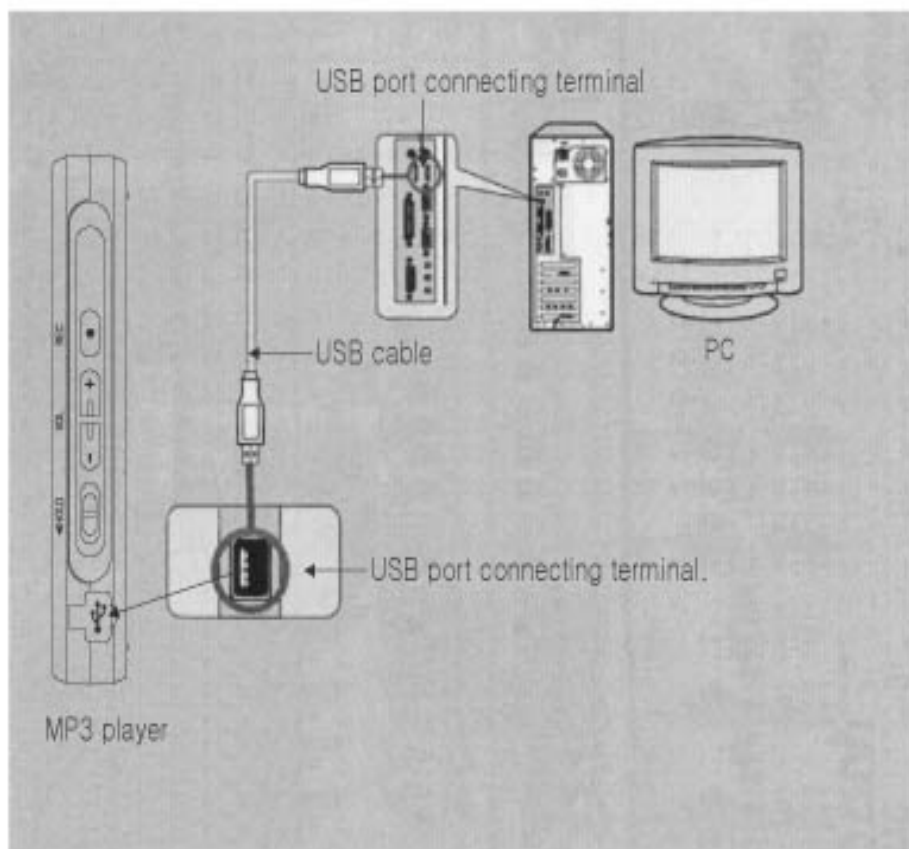




Sky Manager installation manual

* Connecting the MP3 player to your Computer

Use Sky Manager to connect the MP3 player to your computer. This will allow you to properly utilize recorded messages using the full range of functions.



"USB online" will appear on the LCD if you connect the MP3 player to PC.

Click the connect icon if the "USB online" will not appear on the LCD. If the "USB online" icon is not activated, install the USB Drivers manually.



Sky Manager installation manual

* Driver installation

If PC doesn't recognize Voice Recorder after Sky Manager is installed, add New Hardware Wizard window appears. In that case, please follow the steps.



Click



Click

*Notice : Insert SKY Manager CD in CD-ROM Drive.



Sky Manager installation manual



Click



Click



Click



Using the Sky Manager

* Sky Manager startup window and basic icons



Exploring Window

Voice Recorder
/MP3 file list

Memory Format icon

Change file order icon

Delete icon

Download icon

Upload icon

Connect icon



MP3 folder

VOICE folder

DATA folder



Using the Sky Manager

* File Copy

You can Up and Down-load the MP3 or recorded message files from to PC using an each button on main screen of Sky Manager.

-Store the recorded messages to PC



*Also you can up & down load the file using this icon.

*Copying the selected file to PC or vice versa.

*Stored to PC under directory
C:\Program
Files\Sky Manager
Voice data

*You can change the stored
directory to one you want.

*Recorded messages is possible up to 99 files.
(If the file name of MP3 is too long, it can't be recorded up to 99 files)



Using the Sky Manager

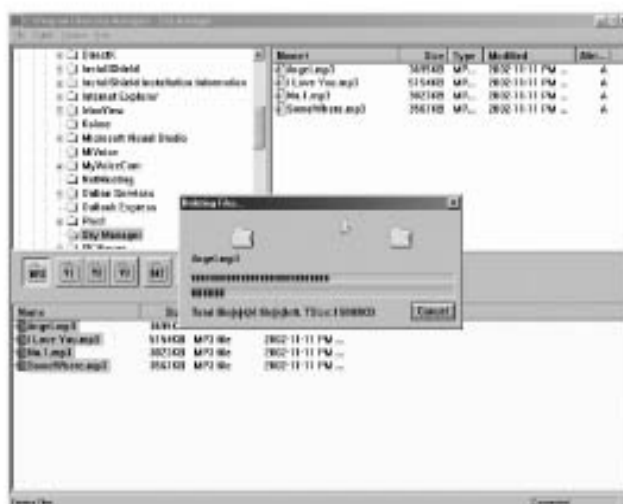
* Checking the files in folder



*Only MP3 files are stored to music folder. Recorded Voice file are stored to file folder automatically.

*Others files (no MP3 & voice files) are stored to DATA folder.

* File Delete



*Select file

*Click the delete (X) icon.



Using the Sky Manager

* Change file order



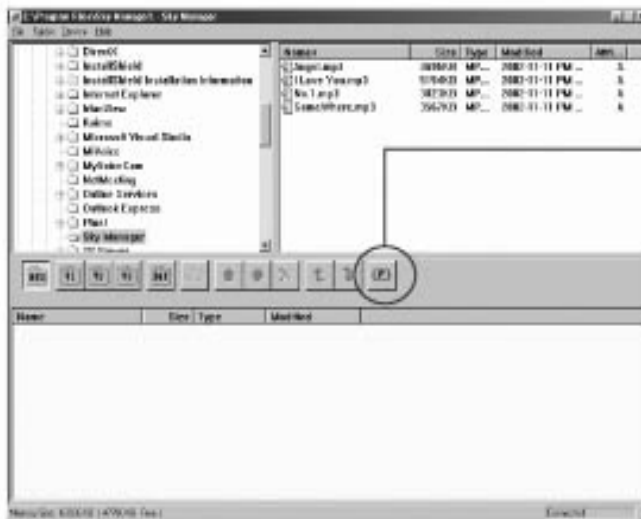
Name	Size	Type	Modified
Angel.mp3	3695KB	MP3 file	2002-11-11 PM 01:30
I Love You.mp3	5154KB	MP3 file	2002-11-11 PM 01:30
No.1.mp3	3023KB	MP3 file	2002-11-11 PM 01:30
SomeWhere.mp3	3567KB	MP3 file	2002-11-11 PM 01:30

Name	Size	Type	Modified
Angel.mp3	3695KB	MP3 file	2002-11-11 PM 01:30
No.1.mp3	3023KB	MP3 file	2002-11-11 PM 01:30
I Love You.mp3	5154KB	MP3 file	2002-11-11 PM 01:30
SomeWhere.mp3	3567KB	MP3 file	2002-11-11 PM 01:30



Using the Sky Manager

* Memory format on PC



*Click memory format icon

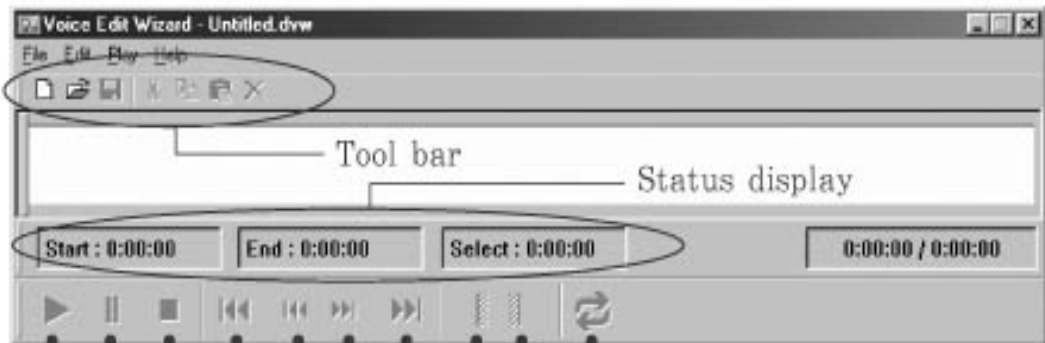


*All files are deleted on MP3 player when you execute format action.



Using the Voice Edit Wizard

* Voice Edit Wizard startup window and basic icons



- Repeat playback
- Set cursor to the end point on selected area
- Set cursor to the start point on selected area
- Move cursor to the end point
- Move cursor to the end point on selected area
- Move cursor to the start point on selected area
- Move cursor to the start point
- Stop
- Pause
- Playback



Using the Voice Edit Wizard


* Playback

1. Open a recorded file that you want.



2. Set cursor that you want location.



3. Click the playback icon().

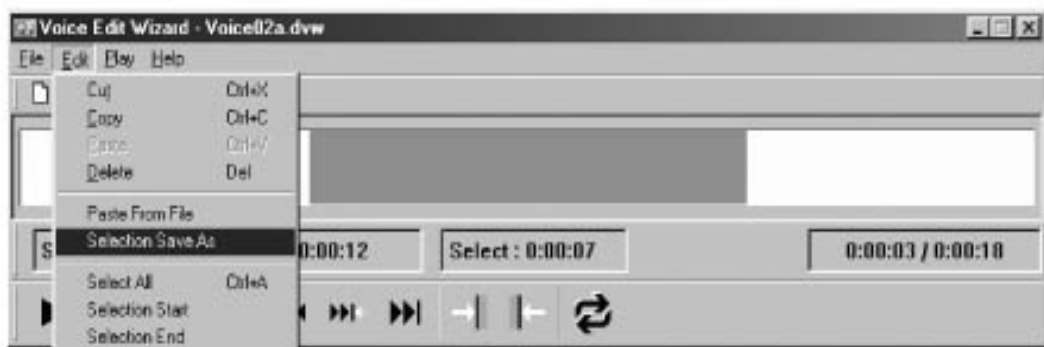


Using the Voice Edit Wizard

* File divide



1. You can cut, copy or delete the selected portion of the file using  and  icons.





2. You can save the selected portion to the other file name.



Using the Voice Edit Wizard

* File merge



1. You can merge in the selected portion of the file using  and  icons.



2. Attach in the selected location that you want file.



Cautions

* Cautions in Operating

1. Do not drop the product and give it a shock.
It could cause troubles.
2. Do not place the product at the following condition and/or places :
 - Where it is full of high temperature above 60 degrees.
 - At a dusty place.
 - Near the heaters or any type of heat sources.
 - In a car with windows closed, especially in summer.
 - At a heavy damp place like a bathroom
3. Any excessive force on the LCD display could cause damages to it and to over all LCD functions.
4. A magnetic card such as a credit card or subway communication ticket may not be working any longer once it is placed on or close to the speaker.
5. The seller holds no liability for any damages caused by misuse of the product and any claims from the third party.
6. The seller holds no liability for any lost messages which are caused by repair or any other troubles.



Cautions

* Cautions in Using Battery

1. Do not have a short circuit, disassemble, heat or put battery in the fire. and do harm to your eyes, also could cause fever and the rupture a doctor.
2. Do not use different kind of battery.
3. Take the battery off when you don't use for a long time.

* Cautions for Safety

1. Take battery off when there are malfunction caused by smoke and heat.
2. Do not use in the place where electronic product's operation is prohibited like inside of airplane.
3. Do not use in driving and walking, since any accident could be happened.



Specification

* For improvement of product, specifications & design can be changed without previous notice

ITEM	SPECIFICATION	
Model Number	DMR-1816	DMR-1832
Max. Recording Time	540 minutes	1080 minutes
Max. File No to REC	99 Files	
Max. Output Power	50mW at THD 10%	
Input	Built in MIC	
Output	Stereo Jack	
Loud Speaker	Dynamic 20mm	
Dimensions	28.9(W) x 85(H) x 13.2(D)mm	
Weight	25g (without battery)	
Memory Medium	Built in Flash Memory	
Power Source	1.5V, "AAA"alkaline	
Battery Life Time	Recording : 5hrs/Playback : 6hrs	
Condition to use	0°C~40°C	
Basic Accessory	User's Manual, Earphone, 1AAA battery,USB Cable, Installation CD, Neck strap	