

Digital Audio Player

User's Manual



Contents

* Features -----	1	MENU Diagram -----	15
* Name of each part -----	2	VOICE mode select -----	16
* Preparation for operating		PLAYBACK -----	17
BATTERY LOADING-----	4	PAUSE -----	17
Getting to Power On-----	4	Recording Monitor-----	17
* Operating MP3		INDEX addition-----	17
Description of button in MP3--	5	A-B section REPEAT -----	18
MENU Diagram-----	6	RECORDING -----	19
MP3 mode select -----	7	Erasing recorded file -----	20
Playing MP3 file -----	8	Voice Operated Recording Function	21
Setting the menu -----	8	* Firmware Upgrade & Font Download	22
FILE REPEAT-----	9	Using the removable	
Erasing file -----	10	storage -----	23
A-B section REPEAT-----	11	* Manager PLUS installation manual	
Converting to voice mode	12	Installation of Manager PLUS	24
PC connect -----	12	Connecting to PC -----	26
Format -----	13	* Manager PLUS -----	27
CONTRAST -----	13	* Cautions -----	28
* Operating Recorder		* Specification -----	29
Description of buttons			
on Voice Recorder -----	14		

FCC Information

This device complies with Part 15 of the FCC Rules. Operation is subject to the following two conditions:

- (1) This Device may not cause harmful interface, and
- (2) This device must accept any interference received, including interference that may cause undesired operation.

Note: This equipment has been tested and found to comply with the limits for CLASS B digital device, pursuant to Part 15 of FCC Rules. These limits are designed to provide reasonable protection against harmful interference when the equipment is operated in a commercial environment. This equipment generates, uses and can radiate radio frequency energy and, if not installed and used in accordance with the instructions, may cause harmful interference to radio communications. However, there is no guarantee that interference will not occur in a particular installation. If this equipment does cause harmful interference to radio or television reception, which can be determined by turning the equipment off and on, the user is encouraged to try correct the interference by one or more of the following measures:

- 1.1. Reorient or relocate the receiving antenna.
- 1.2. Increase the separation between the equipment and receiver.
- 1.3. Connect the equipment into an outlet on a circuit different from that to which receiver is connected.
- 1.4. Consult the dealer or experienced radio/TV technician for help.

WARNING

Changes or modifications not expressly approved by the manufacturer could void the user's authority to operate the equipment.

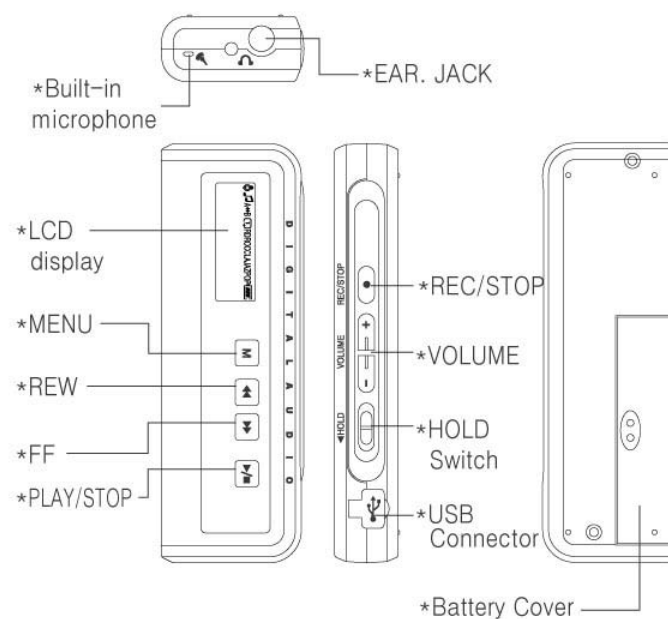


Features

- * **MP3 & WMA Playback**
MP3 is an MPEG1 Layer3 audio format.
WMA is a Microsoft Windows Media audio format.
- * **Removable Storage Device**
You can easily copy and paste PC files to the unit using Windows Explorer.
- * **Sound**
Equalizer can be manually adjusted.
- * **Voice Recording Function**
High quality voice recording can be done.
- * **EL Backlighting**
Bright Display for easy viewing.
- * **AUTOMATIC POWER OFF**
Power will turn off automatically if there are no buttons pressed
- * **VOR (Voice Operated Recording) Function**
Records only if there is actual sound.
- * **REPEAT Playback Function**
To be available for repeat playback
- * **SCAN Play**
Plays the front part of each message successively.
- * **Upgradable**
You can upgrade the built-in firmware.
(Add or change function, etc.)
Please ask the Distributor for upgrades.

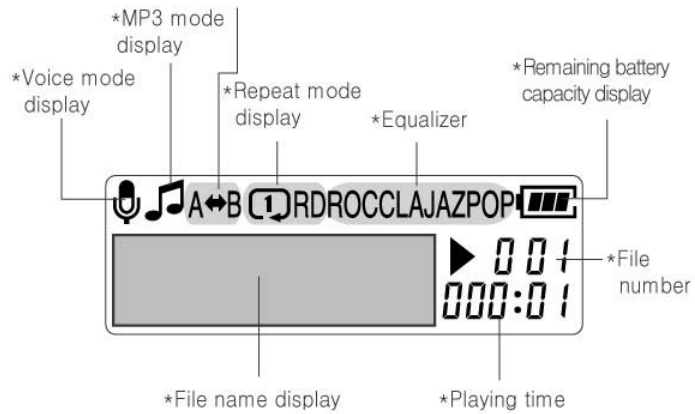


Name of each part





Name of each part

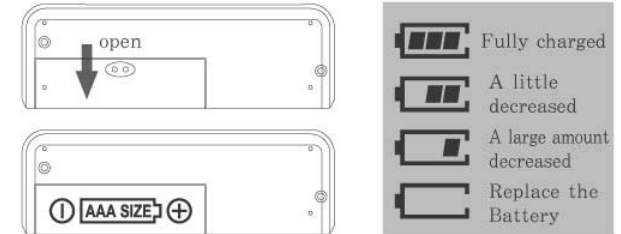


Preparation for operating

* BATTERY LOADING

Loading and replacing of the batteries should be done when device is stopped.

1. Open the battery cover and load a AAA type alkaline battery in the compartment and then close the cover.



(Battery : AAA, LR03 or UM-4 or equivalent)

*Battery life time

Battery	at recording mode	at earphone playback
"AAA" Alkaline	about 6 hrs	about 8 hrs

For managing your battery life time efficiently, the unit will POWER OFF if no-buttons are pressed. Leave the HOLD switch in the ON position when device is not in use.

* Getting Device to Power On

Set the HOLD button to "OFF" and press the PLAY/STOP button. The unit will power on.



Description of button in MP3

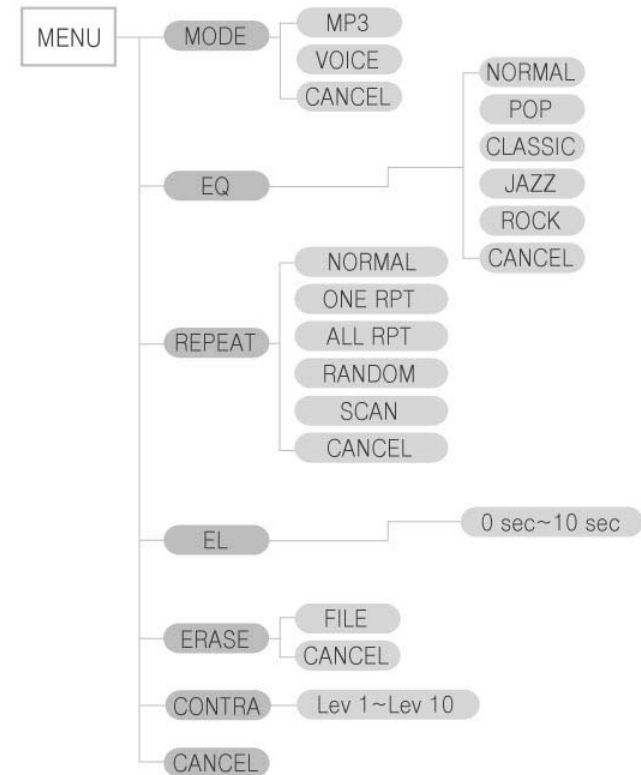
* MP3 mode ("long" : over 1 sec., "short" : under 1 sec.)

NAME	operating	stop	playback
PLAY/STOP	short	playback start	playback stop
	long	power off	power off
FF	short	move to next file	move and playback next file
	long	fast forward search	fast forward and playback
REW	short	move to before file	move and playback before file
	long	fast reverse search	fast rewind and playback
MENU	short	menu setting	change EQ mode
	long	menu setting	change repeat mode
VOLUME+		volume up	volume up
VOLUME-		volume down	volume down
REC/STOP		recording start	A↔B repeat



MENU Flow

* MENU Diagram in MP3 mode



*CANCEL : Exit without selection



Operating MP3

* Operating MP3 Function

- MP3 function will POWER OFF if no buttons are pressed for 25 second after POWERING ON device.

1. Entering MP3 mode.

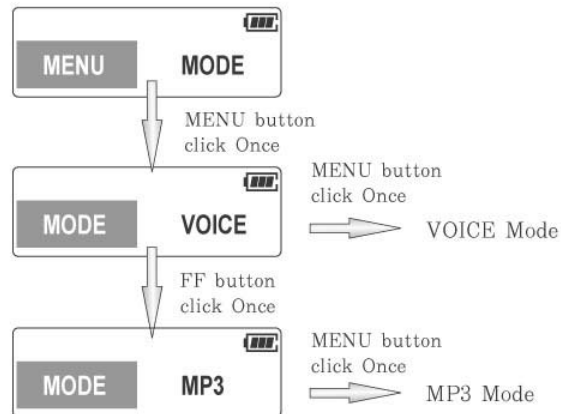
- Put HOLD switch in "OFF" position then POWER ON device.

(You can choose the function with the MENU button during POWER ON)

* MP3 mode select

Press MENU button twice and select mode by pressing the FF/REW button.

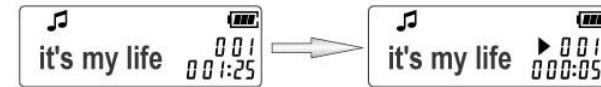
Then press MENU button one more time.



Operating MP3

* Playing MP3 file

1. Set HOLD button to "OFF" and power ON device.
2. Select the file number with FF/REW button.



File selection

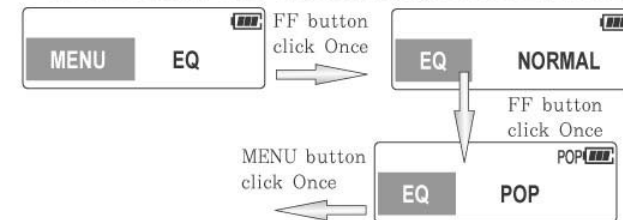
Playback

3. To start playback, press PLAY/STOP button.
4. Adjust Volume level with VOLUME button.
5. To stop PLAYBACK, press PLAY/STOP button one more time.

*If you press PLAY/STOP button just after recording, the last recorded file will be played.

* Setting the menu

- If you press MENU button, the unit will operate as follows.
- The LCD displays as pictured below. Please select EQ by pressing FF/REW button.
- Confirm the EQ setting by pressing MENU button once more. Then you select your favorite EQ mode by pressing FF/REW button and then press MENU button.
- CANCEL means EXIT without changes in the EQ mode setting.



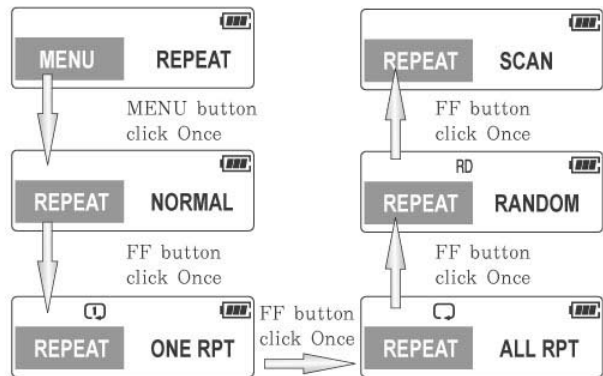
(Normal, POP, Classic, Jazz, Rock)



Operating MP3

* FILE REPEAT

1. Press MENU button and select REPEAT by pressing FF/REW button. And then press MENU button one more time.
2. You can select your REPEAT mode by pressing FF/REW button (NORMAL, ONE RPT, ALL RPT, RANDOM, SCAN) and press MENU button.
3. CANCEL means EXIT without changes in the REPEAT mode setting.



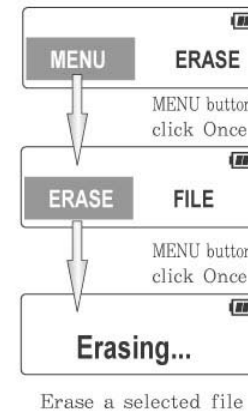
- NORMAL : All files will be played in order and stop.
- ONE RPT : Only selected file will be repeated.
- ALL RPT : All files will be repeated in order.
- RANDOM : All files will be randomly repeated.
- SCAN : The first part of each file will be played for 5 seconds in order.



Operating MP3

* Erasing file

1. Select the file by pressing FF/REW button at STOP mode
2. You can select your ERASE mode by pressing FF/REW button and press MENU button.
3. If you press MENU button one more time, the selected file will be erased and the following file number.





Operating MP3

* A-B section REPEAT

1. If you press REC/STOP button one time shortly during PLAYBACK mode, point A will be selected.
2. If you press REC/STOP button one more time, point B will be selected.
3. A-B section will be repeated.
4. If you press REC/STOP button once more, A-B section repeat will be released.



Operating MP3

* Converting to voice mode

- If you press REC/STOP button while in MP3 mode, the unit will switch to VOICE mode, then start recording.

*If MEMORY is exhausted or file number is exceed the limit, "FULL" will be displayed and recording won't be continued.

* PC Interface

- While USB cable is connected, "USB online" is displayed on LCD, and only PC INTERFACE is available (no other functions operate). When you disconnect the cable from the PC or the unit, the unit POWERS OFF.

USB online

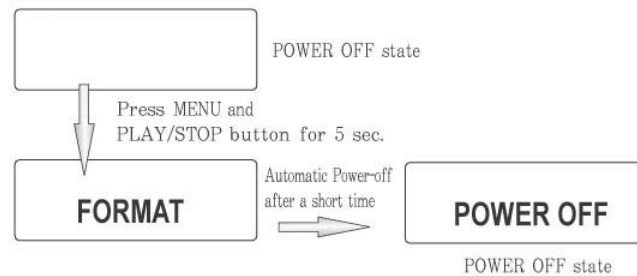


Operating Recorder

* Format

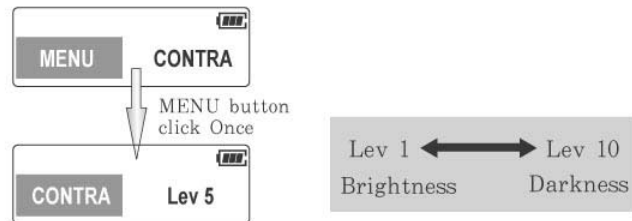
1. If you press MENU and PLAY/STOP buttons for more than 5 seconds at POWER OFF state, "FORMAT" will blink on the LCD screen.
2. Then all recorded files will be erased.

*At FORMAT mode, all files will be erased.



* CONTRAST

You can control LCD contrast.



Description of button in Voice Recorder

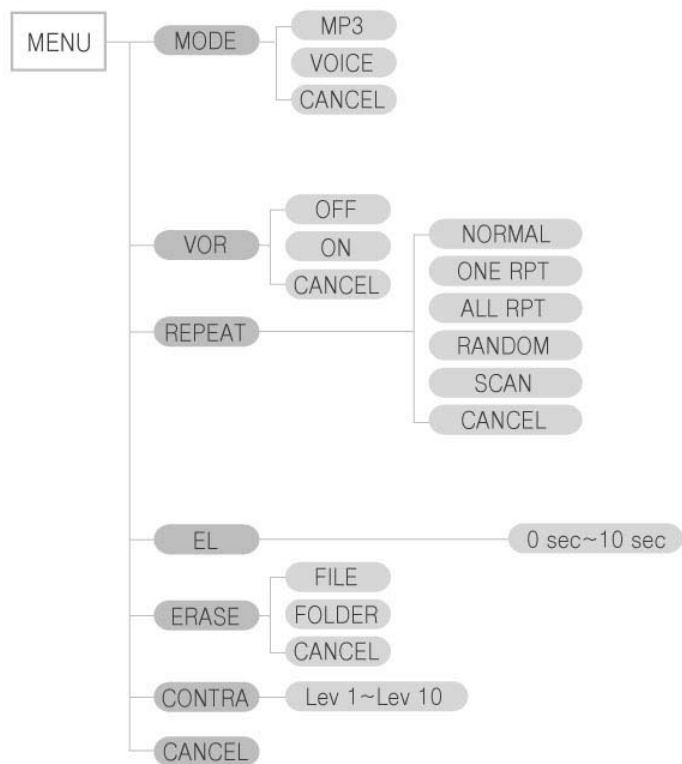
* Voice Recorder Mode ("long" : over 1 sec., "short" : under 1 sec.)

NAME	operating	STOP	Playback	Recording
 PLAY/STOP	short	playback start	playback stop	PAUSE
	long	power off	power off	
 FF	short	move to next file	move and playback next file	increase message number
	long	fast forward search	fast forward and playback	
 REW	short	move to before file	move and playback before file	
	long	fast reverse search	fast rewind and playback	
 MENU		menu set	change repeat mode	remaining time display
 VOLUME+		volume up	volume up	
 VOLUME-		volume down	volume down	
 REC/STOP		recording start	A↔B repeat	recording stop



MENU Diagram

* MENU diagram in Voice Recorder mode



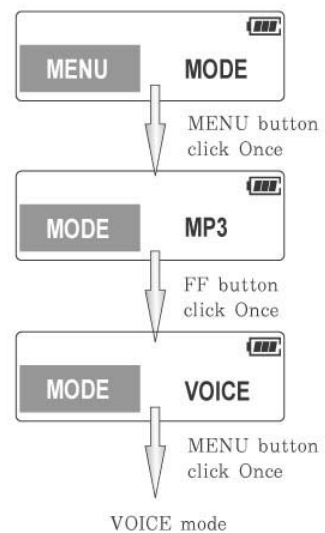
*CANCEL : Exit without selection



Operating Recorder

* VOICE mode select

Press MENU button twice and select mode by pressing the FF/REW button.
Then press MENU button one more time.

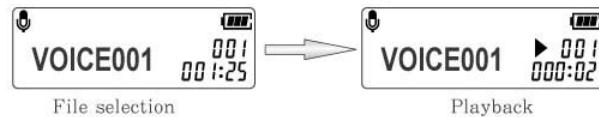




Operating Recorder

* PLAYBACK

1. Set HOLD button to "OFF" and power ON device.
2. Select the file number with FF/REW button.



3. To start playback, press PLAY/STOP button.
4. Adjust Volume level with VOLUME button.
5. To stop PLAYBACK, press PLAY/STOP button one more time.

*If you press PLAY/STOP button just after recording, the last recorded file will be played.

* PAUSE

If you press PLAY/STOP button shortly during recording. Recording will be paused and if you press PLAY/STOP button once more, PAUSE will be released.



*If PAUSE mode continues for more than 10 minutes, the unit will POWER OFF.

* Recording Monitor

During recording, you can monitor the recording message by inserting the earphones into the earphone jack.

* INDEX addition

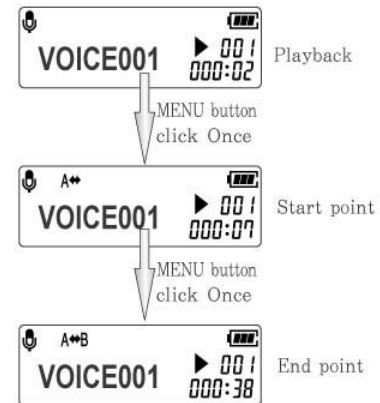
If you press FF button during a recording, the index number will increase and recording will continue.



Operating Recorder

* A-B section REPEAT

1. If you press REC/STOP button one time during PLAYBACK mode, point A will be selected.
2. If you press REC/STOP button one more time, point B will be selected.
3. A-B section will be repeated.
4. If you press REC/STOP button once more, A-B section repeat will be released.

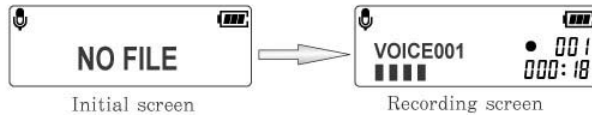




Operating Recorder

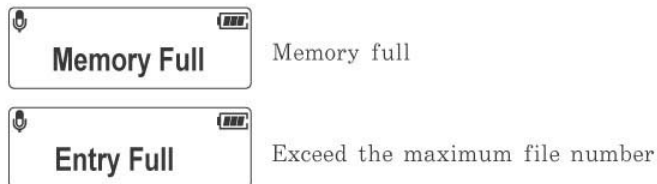
* RECORDING

1. Set HOLD button to "OFF" and get the unit powered on.
2. Point MIC toward the sound source and press the REC/STOP button. File number will be added and recording will be started.
3. To stop recording, press the REC/STOP button one more time.



*Test recording in advance to prevent recording failure.

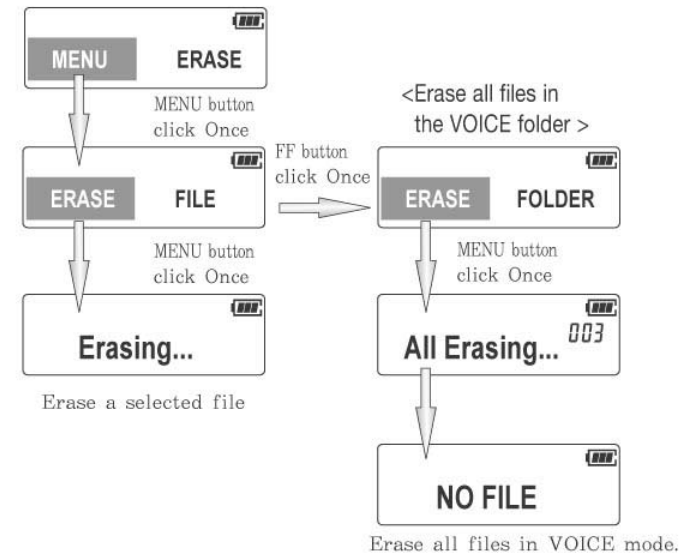
*If MEMORY is exhausted or file number is exceed the limit, "FULL" will be displayed and recording won't be continued.



Operating Recorder

* Erasing recorded file

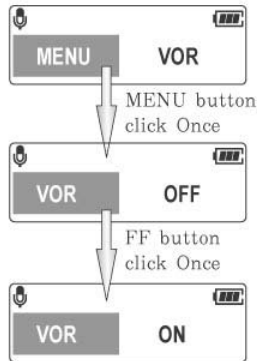
1. Select the file by pressing FF/REW button at STOP mode
2. If you press ERASE button one more time, the selected file will be erased and the following file number will be changed to the current file number.





Operating Recorder

* Voice Operated Recording Function



1. Press MENU button and select VOR by pressing FF/REW button. Then press MENU button one more time.
2. You can select VOR mode by pressing the FF/REW button (OFF/ON) then press MENU button.
3. CANCEL means EXIT without changes.

If sound is lower than a certain level for 5 seconds, the unit will automatically be in SILENT state.
And if the unit detects sound that is higher than a certain level during SILENT state, the unit will automatically restart recording.



SILENT state



Firmware Upgrade & Font Download

Firmware Upgrade & Font Download

First, you will have to install the Upgrade program on your PC. Download the latest Firmware from distributor's homepage. Install the latest Firmware program on your PC.

1. Connect to the USB port on your PC using the USB cable or adaptor.
2. "USB online" message is displayed on the screen and run the "Manager PLUS" on your PC.

USB online

3. After completing the file transfer, you must disconnect the USB cable and power off by using PLAY/STOP button.



<New Font Download >
Device → Select Device Font
<New Firmware Upgrade>
Device → Device Upgrade



Firmware Upgrade & Font Download

Using the removable storage

1. Turn on the unit and connect to PC
2. Open Windows Explorer on PC
3. Select the file to save and drag-and-drop it into the removable disk icon.

*Notice :

The "Don't Remove USB" message will appear during file download or upload. Disconnecting the USB cable while "Don't Remove USB" is displayed may cause malfunction of the unit.



Manager PLUS installation manual

* Installation of Manager PLUS

Before connecting to PC, make sure to install Manager Plus on your PC.

• System Requirement

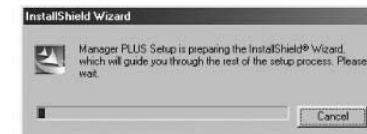
Pentium 133MHz or greater
Windows 98 SE/ME/2000/XP
20MB of available hard disk space
CD-ROM drive
USB port(1.1) supported

*Note :

- Windows ME, 2000 and XP can recognize the driver without installing the provided program. However, you must install the program in order to format and upgrade.
- If the Manager program has not been installed in windows 98, then it will not communicate with your removable disk.
- You must install the USB driver files first.

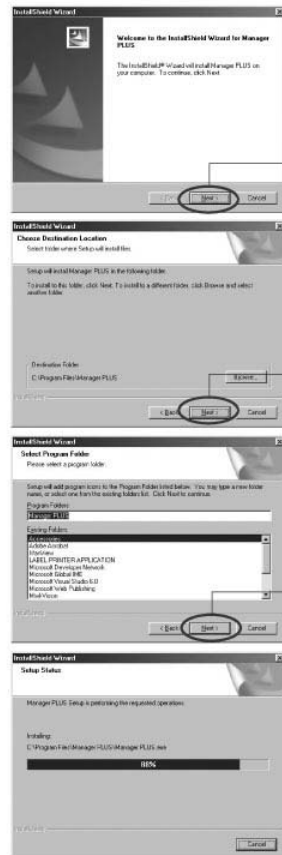
• Installing software

Insert the Installation CD into CD-ROM drive. The picture shown below appears. The installation window should then appear.





Manager PLUS installation manual



Click

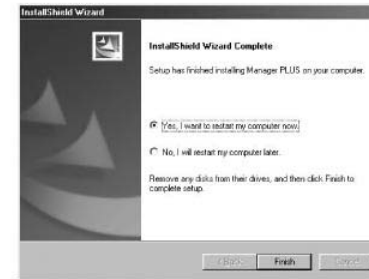
Click

Click

*Please, wait till
the installation is
completed.



Manager PLUS installation manual



*Installation is finished,
and the short-cut icon
will appear on the
desktop.

- To remove Manager PLUS
Click Start → Settings → Control Panel →
Program Add/Deletion.

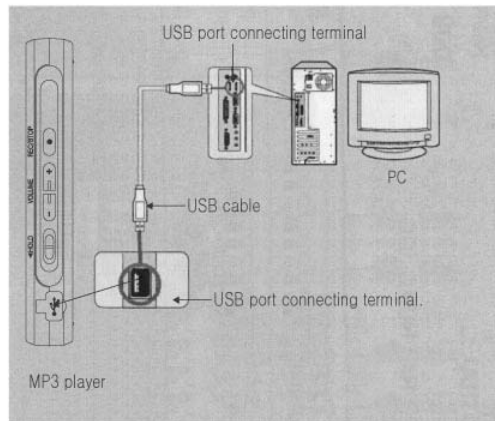




Manager PLUS installation manual

* Connecting to PC with USB cable

Plug one end of the USB cable into the USB port on the PC.
The unit will automatically turn on.



Connect the opposite end of the USB cable to the USB cable port on the left side of the unit.

USB driver is installed with a message saying that it is searching for a new device. You may not see the display screen during installation.

Go to the device manager to check that installation has been successfully completed.

When USB driver is not installed automatically, refer to next description.

(Follow these steps if the USB driver is not in place)



Manager PLUS

Check the device manager.

*Windows 98, ME :

Control panel → System → Device Manager

*Windows 2000 :

Control panel → System → Hardware → Device Manager

*Windows XP :

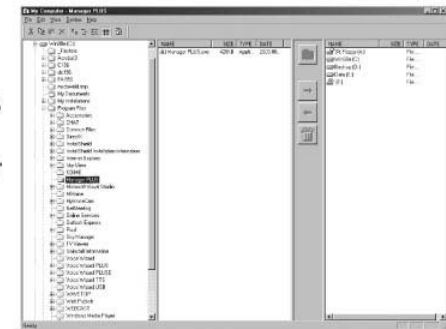
Control panel → System → Hardware → Device Manager

Check if there is a device listed with an exclamation point or a question mark (displayed as unknown device or USB device)
Click on the device listed with an exclamation point or a question mark

And then delete and re-connect.

*Note :

- The installation method may vary depending on the type of PC or operating system.
- Contact your PC dealer or service center for installation information.
- If errors occur continuously when you install the USB driver, reconnect the USB cable after rebooting your system.





Cautions

* Cautions in Operating

1. Do not place the product in the following condition and/or places :
 - Where temperatures reach above 120°F.
 - Dusty place.
 - Near heaters or any type of heat sources.
 - In a car with windows closed, especially in the summer.
 - Damp places, like a sauna or bathroom.
2. Any excessive force on the LCD display could cause damages to it and to the over all LCD functions.
3. A magnetic card such as a credit card or subway communication ticket may not work once it is placed on or close to the speaker.
4. The seller holds no liability for any damages caused by misuse of the product and any claims from the third party.
5. The seller holds no liability for any lost messages which are caused by repair or any other troubles.

* Cautions in Using Battery

1. Do not a short circuit, disassemble, heat or put batteries in the fire. Battery acid could cause bodily harm if exposed to the skin or eyes.
2. Do not use different kind of battery.
3. Remove the battery, if the unit will not be in use for over a months time.

* Cautions for Safety

1. Remove the battery when there are malfunction caused by smoke and heat.
2. Do not use the device where electronic product operation is prohibited like inside an airplane.
3. Do not operate when driving or walk, to prevent accidents or distractions.



Specification

* Improvements of product: Specifications & Design can be changed without notice

ITEM	SPECIFICATION	
Model Number	IMP-2128	IMP-2256
Max. Recording Time	18 Hours	36 Hours
Max. Output Power	50mW at THD 10%	
Input	Built in MIC	
Output	Stereo Jack	
Dimensions	28.9(W) x 85(H) x 13.2 (D)mm	
Weight	25g (without battery)	
Memory Medium	Built in Flash Memory	
Power Source	1.5V, "AAA" alkaline	
Battery Life Time	Recording : 6hrs/Playback : 8hrs	
Condition to use	0°C~40°C	
Basic Accessory	User's Manual, Earphone, 1AAA battery, USB Cable, Installation CD, Necklace strap	