

giving an overview of all the information which was acquired during the use of Fishfinder. Deeper now saves unlimited amount of information, so you can access your sonar reading anytime you want.

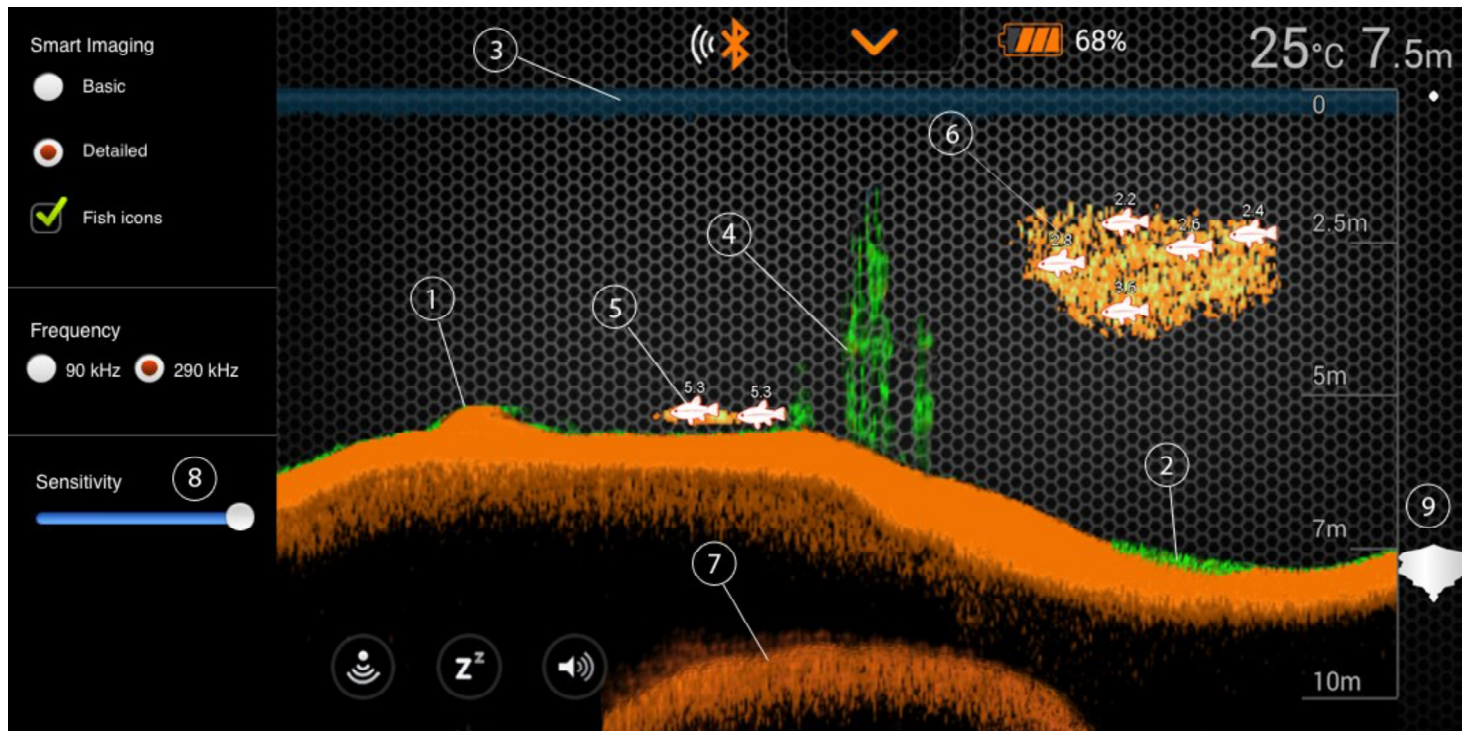
The application also has sound notifications. You receive them according to your personalized settings when Deeper spots fish or the depth changes. Sound notifications can be muted by the mute button. Green light indicator blinks upon reception of data packages.



Sound notifications can also serve as incoming fish alarms when the gadget is kept stationary. Furthermore, when navigating with a boat you can use the minimum depth alarm to avoid getting grounded. However, this should only be used as an additional precaution.

[Back to TOP](#)

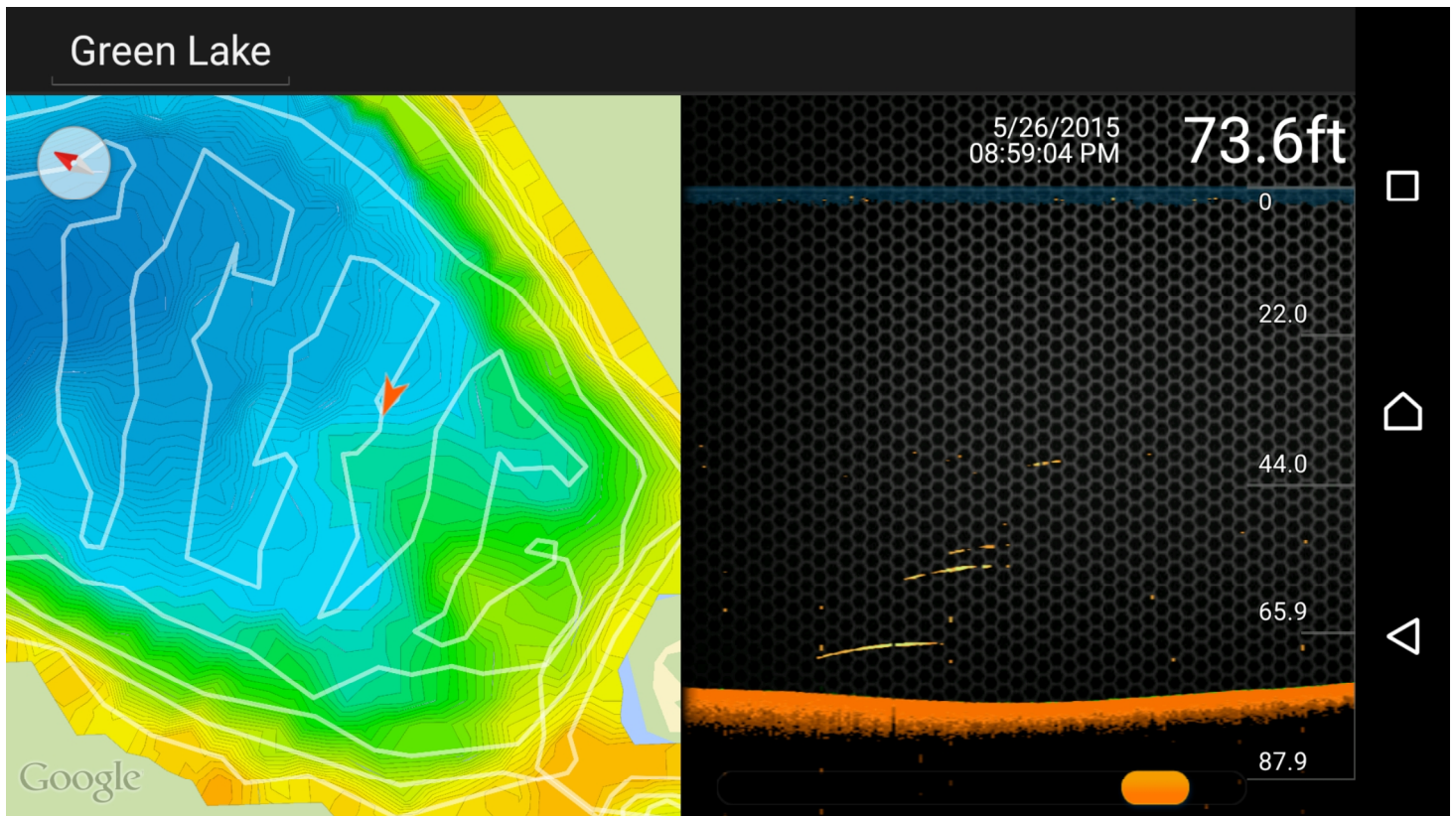
Smart Imaging : Detailed mode



1. Deeper Smart Fishfinder can help you determine whether the bottom is hard or soft. When the sonar sound waves are reflected back by the bottom, hard bottom returns a stronger signal than a soft bottom. On your smartphone or tablet screen sonar returns are displayed as: orange (hardest), brown (medium) and black (smoothest).
2. The bottom of the water will always reflect the strongest signal, therefore it will have the most intensive color. The bottom is the continuous, intensely colored line running across the bottom of the screen.
3. High sonar sensitivity with our software algorithms allow us to determine weed beds, vegetation. These returns will be shown in green color.
4. Along the top of the screen, you will see a blue color water surface line with a grouping of intense colors. This area is surface clutter, which can be caused by waves or any other sonar interference at the surface of the water.
5. Deeper Smart Fishfinder includes the latest technology in interpreting bottom signals. It can scan through fish, structures and thermoclines. Large schools of fish or dense structures close to the bottom can affect water depth return readings.
6. The Fish icon option allows to find fish by viewing the actual sonar data or a combination of a fish symbol and actual sonar data. Simulated fish icons are displayed in three different sizes. The classification of fish depends on many variables, the weight of fish is just one of them, thus the icons cannot always identify accurate fish size. Therefore, if you prefer to see the actual size of fish, choose "Detailed Smart Imaging" and untick "Fish Icons". In that case, you can see quite accurate fish size, however it is more difficult to identify them.
7. The unit will clearly show schools of Bait Fish as clouds of different shapes and sizes, depending on the number of fish and boat speed.
8. When the sonar sound waves are reflected back by the bottom, a hard bottom returns a stronger signal than a soft bottom. You may also see a second sonar return when the sonar signal bounces between the bottom and the surface of the water and back again. Hard bottoms will show a strong second return, while soft bottoms will show a very weak one or none at all.
9. Sensitivity controls how much detail is shown on the display of your smartphone or tablet and will adjust the sensitivity of all sonar frequencies. Increasing the sensitivity shows more sonar returns from small baitfish and suspended debris in the water. When operating in very clear water or greater depths, increased sensitivity shows weaker returns that may be of interest. Decreasing the sensitivity eliminates the clutter from the display that is sometimes present in muddy water. If Sensitivity is adjusted too low, the smartphone display may not show many sonar returns that could be fish.

[Back to TOP](#)

Boat Mode

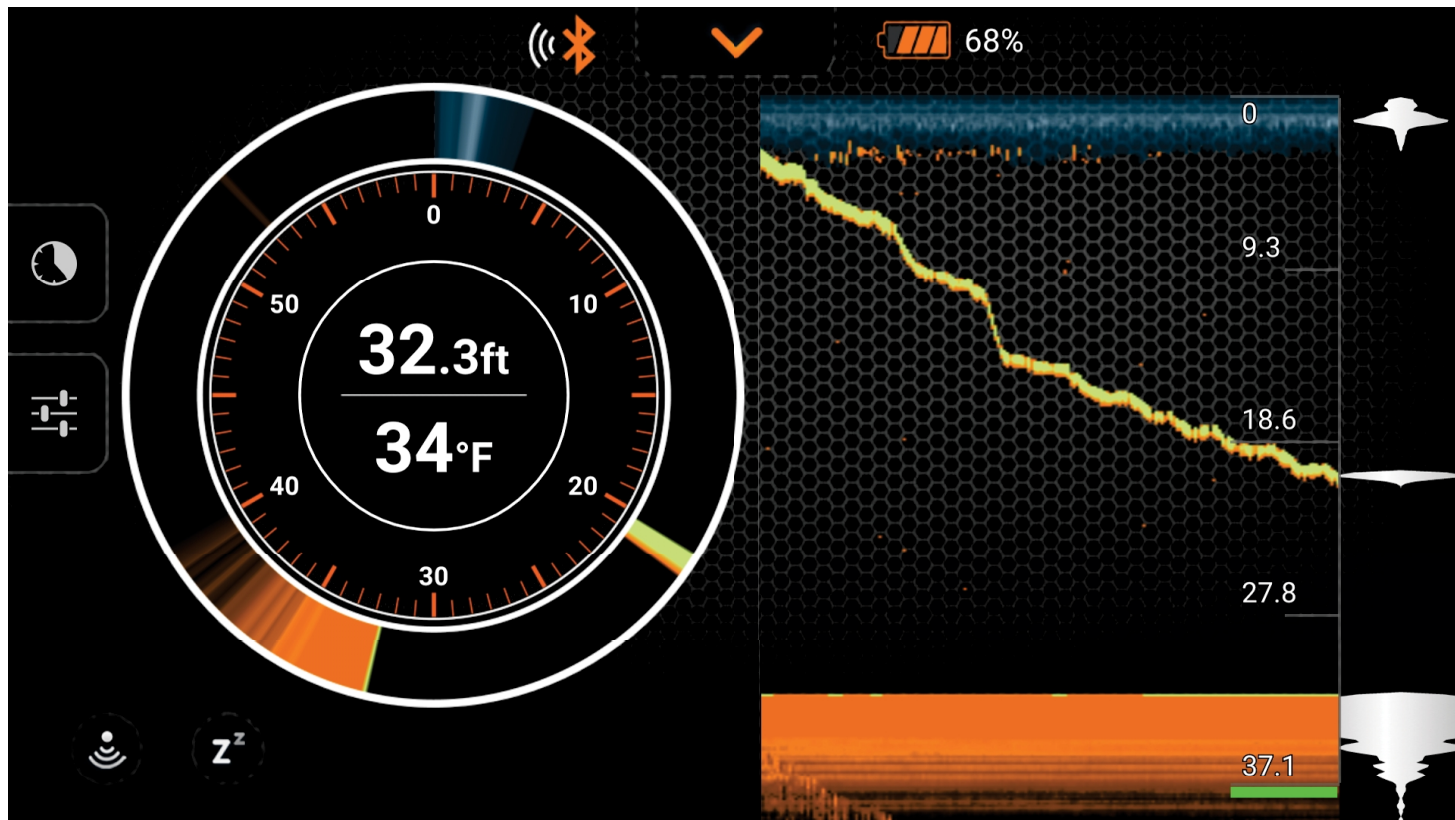


Deeper smart Fishfinder enables you to create bathymetric maps of the favorite fishing spots. When operating in Boat Mode, Deeper instantly connects to GPS on your smartphone or tablet and creates custom, real-time bathymetric maps right on the screen. In order to sufficiently use Boat Mode, Deeper has to be in close proximity with your smartphone or tablet as GPS is integrated in the later ones, not in Deeper. These maps can be saved and accessed later through history function.

1. To use the feature, turn on the Boat Mode located in the upper menu bar in the main Settings field.
2. The Mapping feature enables you to instantly monitor the bottom contour detail, depths, and locate the best fishing areas.
3. The white lines indicates GPS record, while the colorful ones depict the isobath (depth curves). Therefore, it is easy to identify different depths according to the colors displayed on your device.
4. In order to access unlimited data of the sonar imaging recordings and bathymetric map logs you can find it through History function located on the top menu bar.
5. All of the sonar data is stored and conveniently presented in one place, so it doesn't take long to find what you need.

[Back to TOP](#)

Ice Fishing (Sonar + Flasher)

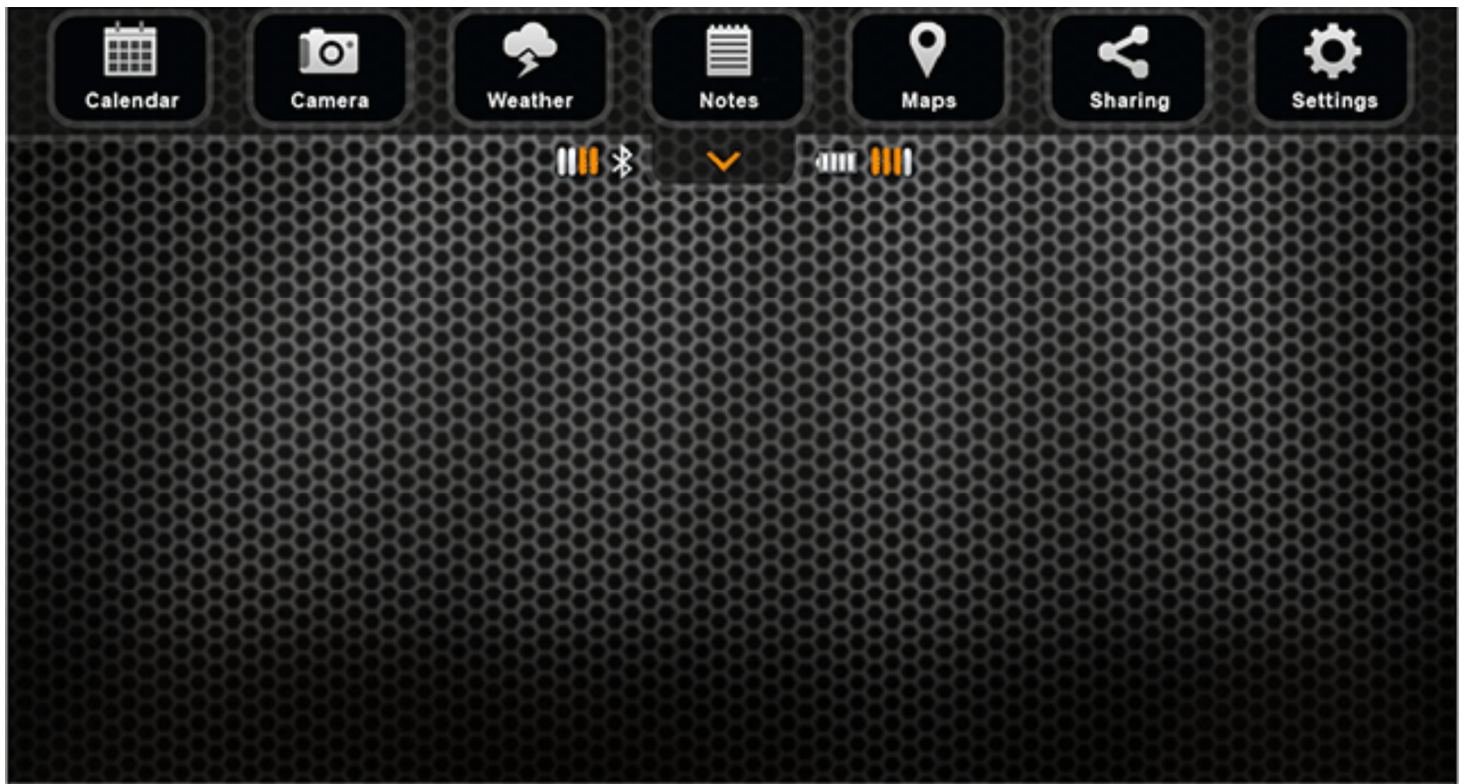


Deeper Ice Fishing feature enables traditional ice fishing Flasher Screen views to monitor conditions below the ice. The Amplitude Scope mode plots the depth and intensity of sonar return and displays live image of the activity below the transducer, enabling the unit to even track the movement of the smallest lure or bait.

1. To use the feature, turn on the Ice Fishing Mode located in the main Settings field.
2. Additionally integrated Amplitude Scope mode plots the depth and intensity of a sonar return, displays a live image of the activity below the transducer, so you can track the movement.
3. Split Screen mode allows you to see Regular and Flasher modes on one screen. So you can explore bottom contour, structure and see fish and your lure in real time at the same time.
4. Zoom feature allows you to magnify the view of the area you choose on the Vertical Flasher for better real time tracking of your lure and prey. The zoomed view will be shown on the right side of the screen between the two red lines.
5. Once the Ice-Flasher is on beam is automatically set to 290 kHz (15°) frequency that provides high-accuracy returns of lure, fish and bottom profile.

[Back to TOP](#)

Menu



The menu of the main screen allows you to access various features of the application, as listed below:

- Calendar displays moon cycles and fish activity levels at your chosen fishing location.
- Camera feature allows you to take photos of your catch without leaving the application.
- Weather displays current weather conditions and forecast for your chosen fishing location.
- Notes enables you to keep a fishing journal with pictures.
- Maps show your current location and help you find and manage fishing spots.
- History allows you to access your data and offline maps.
- Settings allow you to change setup of your application and gadget.

[Back to TOP](#)

Calendar



The Calendar provides you with information about fish activity levels and lunar phases for a chosen fishing location. The fish activity level for each day of the month is presented by the orange circles. By clicking on a particular day in the Calendar you can see the hourly fish activity levels. The higher the fishing activity level is, the better is a chance of successful fishing.