

Installation Instructions

Overview of Generic UHF Antenna Bracket Installation

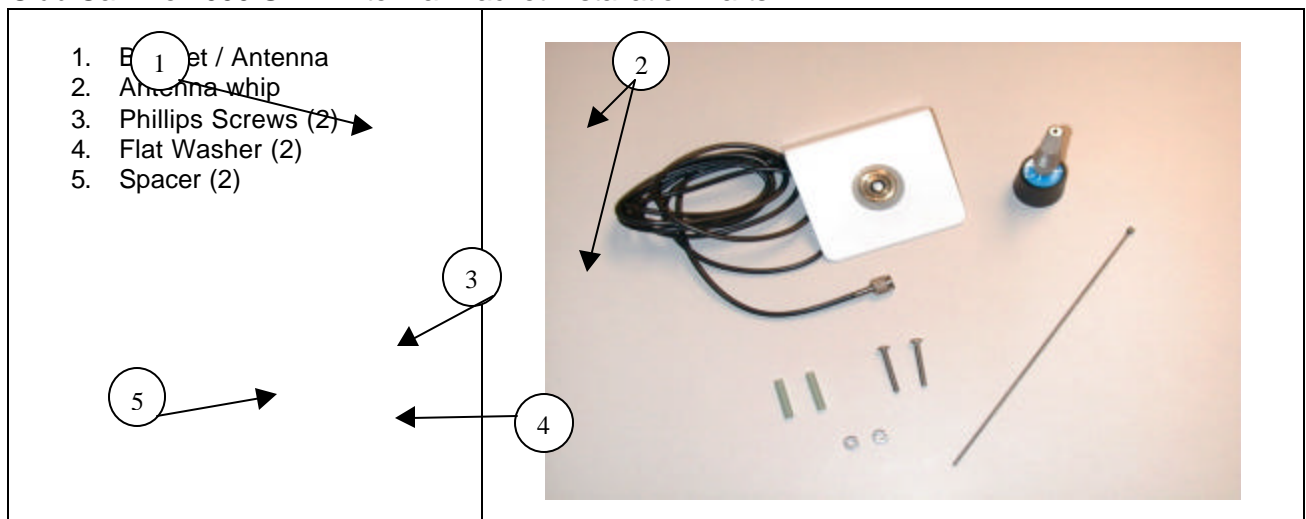
FCC Antenna Warning

Use of any antenna other than the one provided with this kit may expose the user or nearby persons to radio frequency (RF) emission levels outside the FCC safety guidelines.

- Left (drivers side) and Right side of cart will be identified as someone sitting forward in cart.
- Before doing any work on golf cart, make sure that the key is in the off position.
- Ensure the parking brake is set.
- Remove windshields if installed before beginning as per Cart Manufacture User's Manual.
- The UHF antenna cable is not attached to the Display Unit during this phase of the installation. Leave cable assemble available for easy access for latter in the installation.

Specific UHF Antenna Bracket Installation instructions per cart type (ex. Club Car, EZ-GO, Yamaha), and model.

Club Car Pre 2000 UHF Antenna Bracket Installation Parts



Club Car Completed Pre 2000 UHF Bracket Installation

Future picture of completed UHF Bracket Installation.

Club Car UHF Pre 2000 Bracket Installation

1. Remove right side of cart
bracket

2 7/16 b



1. Mount UHF antenna on right side of cart using the two Phillips head screws, flat washer and sheathing pieces.

Important: UHF bracket needs to be isolated from cart ground.

FCC Antenna Warning Label

While the device is in operation, a separation of at least 500 mm (20 in.) must be maintained between antennae and the body of the user or nearby persons in order to meet the FCC RF exposure guidelines.



Future picture of Antenna whip being installed.

3. Attach Antenna whip upon completion of UHF antenna Bracket.

4. Route UHF antenna cable down roof support. Placing the first tie strap at the top bend of support, and another every 6-8 inches.

Important: Do not pull UHF cable tight at the roof location. Allow a gentle bend to cart frame.

= Zip tie location

5. This completes the UHF bracket and UHF cable installation.

Note: Leave UHF cable connector end unattached. It will be connected later in the installation.



A future picture of the UHF antenna, antenna whip, bracket, Phillips screws, and flat washer will be inserted.

1. Antenna
2. Antenna whip
3. Bracket
4. Spacer
5. Phillips Screws (2)
6. Flat Washer (2)

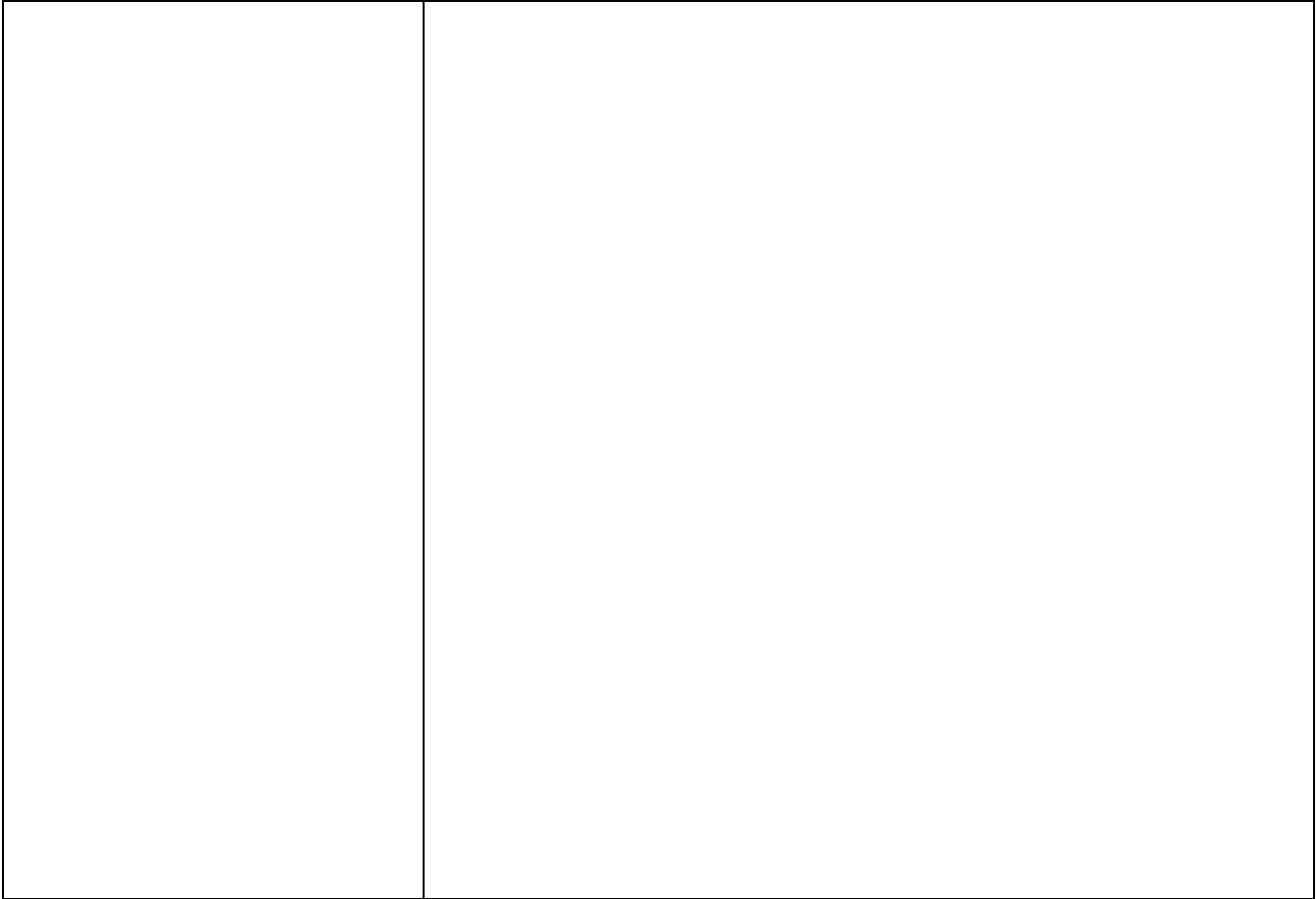
Club Car Post 2000 Completed UHF Bracket Installation

Future picture of completed UHF Bracket Installation.

Club Car UHF Post 2000 Bracket Installation

1. Remove left side 7/16 bolts securing roof





2. Attach screw, washer and plastic sheathing to bracket, and secure

Important:
UHF bracket
needs to be
isolated from
cart ground.



3. Attach Antenna bracket with screws and lock tight.





5. Attach Antenna cable to bracket, and attach whip.

FCC Antenna Warning Label

While the device is in operation, a separation of at least 500 mm (20 in.) must be maintained between antennae and the body of the user or nearby persons in order to meet the FCC RF exposure guidelines.

4. Route UHF antenna cable down roof support. Placing the first tie strap at the top bend of support, and another every 6-8 inches.

Important: Do not pull UHF cable tight at the roof location. Allow a gentle bend to cart frame.

= Zip tie location

5. This completes the UHF bracket and UHF cable installation.

Note: Leave UHF cable connector end unattached. It will be connected latter in the installation.

EZ-GO UHF Antenna Bracket Installation Parts

A future picture of the UHF antenna, antenna whip, bracket, Phillips screws, and flat washer will be inserted.

1. Antenna
2. Antenna whip
3. Bracket
4. To Be Determined
5. To Be Determined
6. To Be Determined

EZ-GO Completed UHF Antenna Bracket Installation

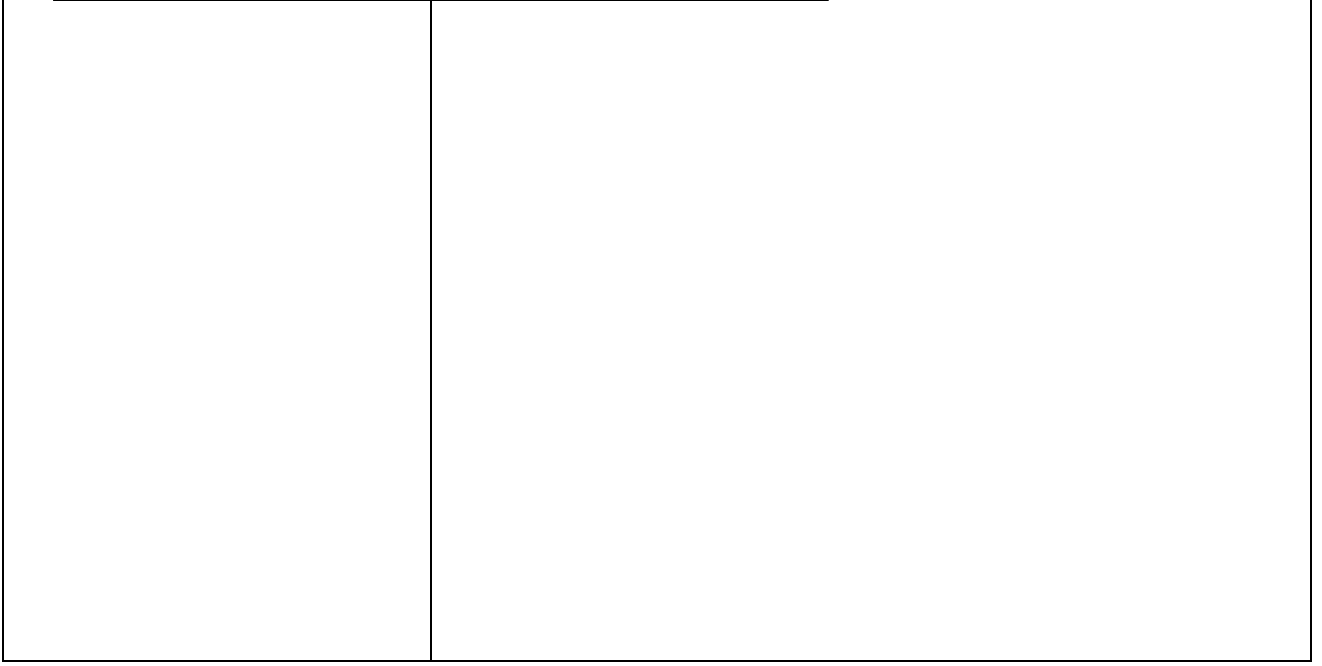
Future picture of completed EZ-GO UHF Bracket Installation.

EZ-GO UHF Bracket Installation

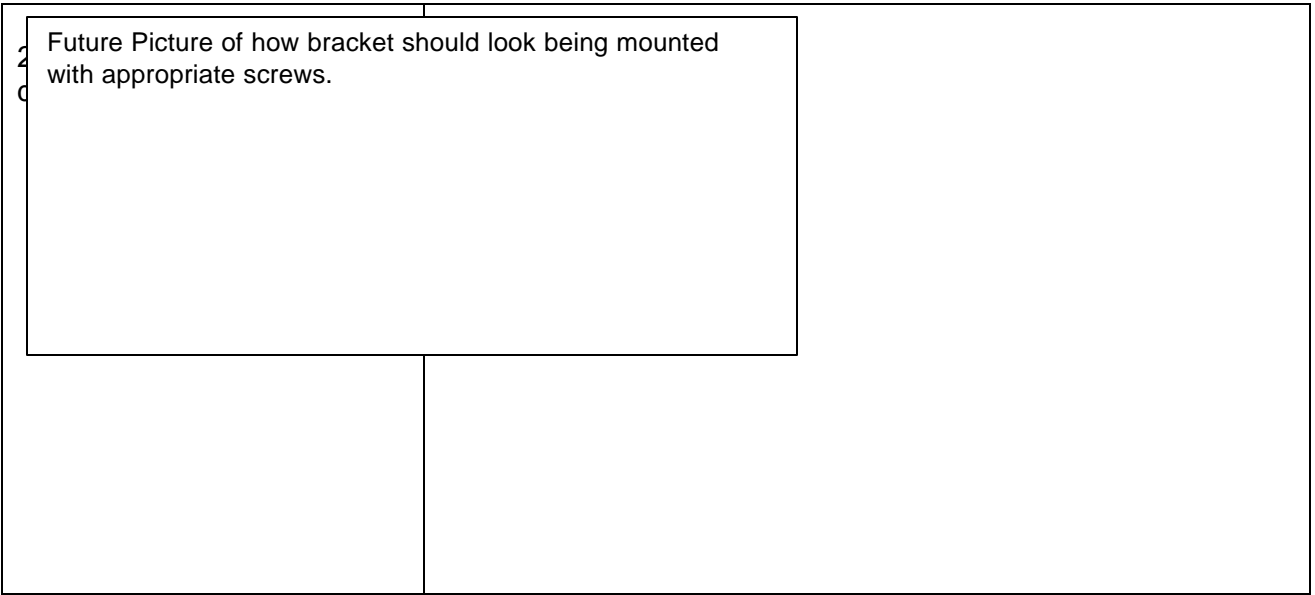
1. Remove right side of cart bracket on hood of cart.

Important: UHF bracket needs to be isolated from cart ground.

Future picture of bracket



2 Future Picture of how bracket should look being mounted
0 with appropriate screws.



Future picture of Antenna whip being installed.

2. Attach Antenna whip upon completion of UHF antenna Bracket.

FCC Antenna Warning Label

While the device is in operation, a separation of at least 500 mm (20 in.) must be maintained between antennae and the body of the user or nearby persons in order to meet the FCC RF exposure guidelines.

Future picture of bracket with head of UHF antenna
Future picture of cart with tie strap locations.



<p>4. Route UHF antenna cable down roof support. Placing the first tie strap at the top bend of support, and another every 6-8 inches.</p> <p>Important: Do not pull UHF cable tight at the roof location. Allow a gentle bend to cart frame.</p> <p>= Zip tie location</p> <p>5. This completes the UHF bracket and UHF cable installation.</p> <p>Note: Leave UHF cable connector end unattached. It will be connected latter in the installation.</p>	
--	--

A future picture of the UHF antenna, antenna whip, bracket, Phillips screws, and flat washer will be inserted.

1. Antenna
2. Antenna whip
3. Bracket
4. To Be Determined
5. To Be Determined
6. To Be Determined

Yamaha Completed UHF Antenna Bracket Installation

Future picture of completed Yamaha UHF Bracket Installation.

Yamaha UHF Bracket Installation

Future picture of bracket with tools required

1. Remove right side of cart bracket on hood of cart.

Important: UHF bracket needs to be isolated from cart ground.

installed.

Future Picture of how bracket should look being mounted with appropriate screws.

Antenna and the body of the seat or nearby persons in order to meet the FCC RF exposure guidelines.

3. Attach Antenna whip upon completion of UHF antenna Bracket.

4. Route UHF antenna cable



Future picture of cart with tie strap locations.

down roof support. Placing the first tie strap at the top bend of support, and another every 6-8 inches.

Important: Do not pull UHF cable tight at the roof location. Allow a gentle bend to cart frame.

= Zip tie location

5. This completes the UHF bracket and UHF cable installation.

Note: Leave UHF cable connector end unattached. It will be connected latter in the installation.

Overview of Generic GPS Antenna Bracket Installation

- Left (drivers side) and Right side of cart will be identified as someone sitting forward in cart.
- Before doing any work to the golf cart, make sure the key is in the off position.
- Ensure the parking brake is set.
- Remove windshields if installed before beginning installation as per Cart Manufacture User's Manual.
- The GPS antenna cable is not attached to the Display Unit during this phase of the installation. Leave cable assemble available for easy access for latter in the installation.

Specific GPS Antenna Bracket Installation instructions per cart type ex. (Club Car, EZ-GO, Yamaha) and Model type.

Club Car Pre 2000 GPS Antenna Bracket Installation Parts

1. GPS Antenna and bracket
2. Spacer
3. Phillips Screws (2)
4. Flat Washer (2)



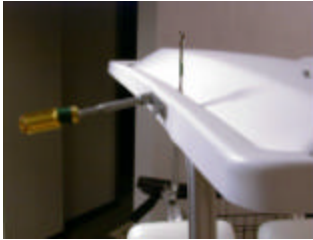
Club Car Completed Pre 2000 GPS Bracket Installation

Future picture of completed GPS Bracket Installation.

Club Car Pre 2000 GPS Bracket Installation

1. Remove Left side of cart
bracket

2 7/16 b



2.

Future Picture of GPS antenna being mounted.

**Needs to be isolated
from cart ground.**



Future picture of GPS Antenna with bend to roof.

3. Route GPS antenna cable down roof support. Placing the first tie strap at the top bend of support, and another every 6-8 inches.

Important: Do not pull GPS cable tight at the roof location. Allow a gentle bend to cart frame.

= Zip tie location

4. This completes the GPS bracket and GPS cable installation.

Note: Leave GPS cable connector end unattached. It will be connected latter in the installation.



Club Car Post 2000 GPS Antenna Bracket Installation Parts

A future picture of the GPS antenna, antenna whip, bracket, Phillips screws, and flat washer will be inserted.

1. Antenna
2. Bracket
3. Spacer
4. Phillips Screws (2)
5. Flat Washer (2)

Club Car Completed Post 2000 GPS Bracket Installation

Future picture of completed GPS Bracket Installation.

Club Car Post 2000 GPS Bracket Installation

1. Remove Left side of cart
bracket

2 7/16 b



2. sid Ph an I ne from cart ground.	Future Picture of GPS antenna being mounted.	

Future picture of GPS Antenna with bend to roof.

3. Route GPS antenna cable down roof support. Placing the first tie strap at the top bend of support, and another every 6-8 inches.

Important: Do not pull GPS cable tight at the roof location. Allow a gentle bend to cart frame.

= Zip tie location

4. This completes the GPS bracket and GPS cable installation.

Note: Leave GPS cable connector end unattached. It will be connected latter in the installation.



A future picture of the GPS antenna, bracket, and other parts to be determined will be inserted.

EZ-GO GPS Antenna Bracket Installation Parts

<ol style="list-style-type: none">1. Antenna2. Bracket3. To Be Determined4. To Be Determined5. To Be Determined	
---	--

EZ-GO Completed GPS Antenna Bracket Installation

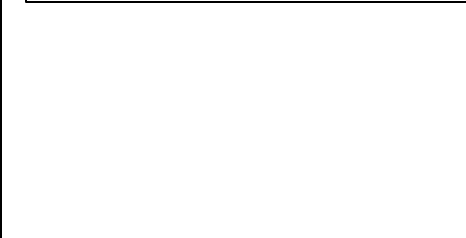
Future picture of completed EZ-GO GPS Bracket Installation.

EZ-GO GPS Bracket Installation

1. Re Future picture of bracket with tools
brack required

2
2
0
I

Future Picture of how bracket should look being mounted with appropriate screws.



Future picture of cart with tie strap locations.

3. Route GPS antenna cable down roof support. Placing the first tie strap at the top bend of support, and another every 6-8 inches.

Important: Do not pull UHF cable tight at the roof location. Allow a gentle bend to cart frame.

= Zip tie location

5. This completes the GPS bracket and GPS Antenna installation.

Note: Leave GPS cable connector end unattached. It will be connected latter in the installation.

Yamaha GPS Antenna Bracket Installation Parts

A future picture of the GPS antenna, bracket, and other parts to be determined will be inserted.

<ol style="list-style-type: none">1. Antenna2. Bracket3. To Be Determined4. To Be Determined5. To Be Determined	
---	--

Yamaha Completed GPS Antenna Bracket Installation

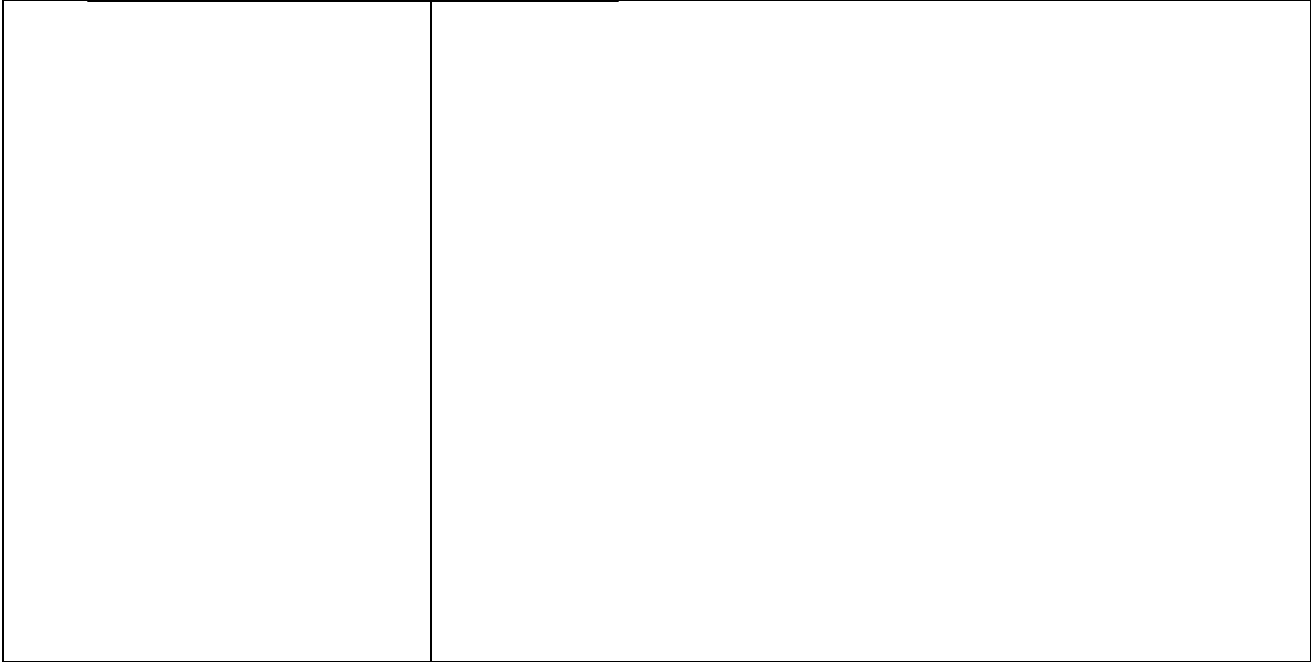
Future picture of completed Yamaha GPS Bracket Installation.

Yamaha GPS Bracket Installation

1. Remove Left side of cart bracket on hood of cart.

Important: GPS bracket needs to be isolated from cart ground.

Future picture of bracket with tools required



Future Picture of how bracket should look being mounted with appropriate screws.

3. Route GPS antenna cable down roof support. Placing



Future picture of cart with tie strap locations.

the first tie strap at the top bend of support, and another every 6-8 inches.

Important: Do not pull UHF cable tight at the roof location. Allow a gentle bend to cart frame.

= Zip tie location

4. This completes the GPS bracket and GPS cable installation.

Note: Leave GPS cable connector end unattached. It will be connected latter in the installation.

Overview of Generic Power Harness Installation

- Make sure key switch is in the off position.

Use caution when working around the batteries. Battery acid may exist around the terminal area.