

JDLINK™ MODULAR TELEMATICS GATEWAY 4G LTE, SERVICE ADVISOR™ REMOTE, AND ETHERNET SWITCH



OPERATOR'S MANUAL

**JDLINK™ MODULAR TELEMATICS GATEWAY
4G LTE, SERVICE ADVISOR™ REMOTE,
AND ETHERNET SWITCH**
OMPFP15955 ISSUE F6 (ENGLISH)

CALIFORNIA

PROPOSITION 65 WARNING

Diesel engine exhaust and some of its constituents are known to the State of California to cause cancer, birth defects, and other reproductive harm.

If this product contains a gasoline engine:

⚠ WARNING

The engine exhaust from this product contains chemicals known to the State of California to cause cancer, birth defects or other reproductive harm.

The State of California requires the above two warnings.

Additional Proposition 65 Warnings can be found in this manual.

John Deere Ag Management Solutions

PRINTED IN U.S.A.

Introduction

Foreword

THANK YOU for purchasing a John Deere product.

READ THIS MANUAL carefully to learn how to operate and service your product correctly. Failure to do so could result in personal injury or equipment damage. This manual and safety signs on your product may also be available in other languages. (See your John Deere dealer to order.)

THIS MANUAL SHOULD BE CONSIDERED a permanent part of your product and should remain with the product when you sell it.

MEASUREMENTS in this manual are given in both metric and customary U.S. unit equivalents. Use only correct replacement parts and fasteners. Metric and inch fasteners may require a specific metric or inch wrench.

RIGHT-HAND AND LEFT-HAND sides are determined by facing in the direction the machine or implement will travel when going forward.

WRITE PRODUCT IDENTIFICATION NUMBERS (P.I.N.) in the Operator's Manual. Accurately record all the numbers to help in tracing the product should it be stolen.

Serial Number: _____

Your dealer also needs these numbers when you order parts. File a backup of the identification numbers in a safe location off the machine or away from the product.

WARRANTY is provided as part of John Deere's support program for customers who operate and maintain their equipment as described in this manual. The warranty is explained on the warranty certificate or statement which you should have received from your dealer.

This warranty provides you the assurance that John Deere will back its products where defects appear within the warranty period. In some circumstances, John Deere also provides field improvements, often without charge to the customer, even if the product is out of warranty. Should the equipment be abused, or modified to change its performance beyond the original factory specifications, the warranty will become void and field improvements may be denied.

If you are not the original owner of this product, it is in your interest to contact your local John Deere dealer to inform them of this unit's serial number. This will help John Deere notify you of any issues or product improvements.

JS56696,0000C4C -19-26JUN15-1/1

John Deere Technical Information Bookstore

NOTE: Product functionality may not be fully represented in this document due to product changes occurring after the time of printing. Read the latest Operator's Manual prior to operation. To obtain a copy, see your dealer or visit www.deere.com and use the 'Search for Agricultural Equipment Operator's Manuals' link to locate the John Deere Technical Information Bookstore.

CZ76372,000071F -19-20APR15-1/1

ZXLink™

ZXLink™ is synonymous with JDLink™. Whenever JDLink™ is mentioned it refers to both JDLink™ and ZXLink™.

*ZXLink is a trademark of Deere & Company
JDLink is a trademark of Deere & Company*

CC20638,00017CA -19-12DEC14-1/1

Contents

	Page		Page
Safety			
Recognize Safety Information	05-1		
Understand Signal Words	05-1		
Follow Safety Instructions	05-1		
Practice Safe Maintenance	05-2		
Use Steps and Handholds Correctly	05-2		
Handle Electronic Components and Brackets Safely	05-3		
Use Electronic Display Properly	05-3		
Avoid Exposure to High Radio Frequency Fields	05-3		
Regulatory and Compliance Information			
Federal Communications Commission Notifications to User	20-1		
Federal Communications Commission Notifications to User	20-1		
Industry Canada Notifications to User	20-2		
Third Party Software Notifications and Licenses	20-4		
CCC A Class Statement	20-4		
Toxic or Hazardous Substances or Elements Disclosure	20-4		
Identify Date Code	20-5		
Identify Date Code	20-5		
EC Declaration of Conformity	20-6		
EC Declaration of Conformity	20-7		
EC Declaration of Conformity	20-7		
EC Declaration of Conformity	20-8		
Customs Union—EAC	20-9		
System Overview			
Modular Telematics Gateway Theory of Operation	30-1		
Customer Owned SIM	30-2		
Satellite Module Theory of Operation	30-2		
Data Collection	30-3		
JDLink™ Functions	30-4		
Satellite Module Service Level	30-5		
Component Overview			
Components	40-1		
Modular Telematics Gateway	40-1		
Cellular, GPS, and Wireless Antenna	40-2		
Wireless Antenna	40-3		
Satellite Module and Antenna	40-3		
Ethernet Switch	40-4		
Ethernet Switch Operating Voltage	40-4		
Operating—JDLink™ Website			
Website Login	70A-1		
Getting Started	70A-1		
Website Navigation	70A-1		
Operating—Service ADVISOR™ Remote			
Overview	70B-1		
Vehicle Reprogramming	70B-1		
Troubleshooting — Reprogramming	70B-5		
SOFTWARE TERMS AND CONDITIONS	70B-6		
Specifications			
Electrical Specifications	90-1		

Original Instructions. All information, illustrations and specifications in this manual are based on the latest information available at the time of publication. The right is reserved to make changes at any time without notice.

COPYRIGHT © 2016
DEERE & COMPANY
Moline, Illinois
All rights reserved.
A John Deere ILLUSTRATION™ Manual

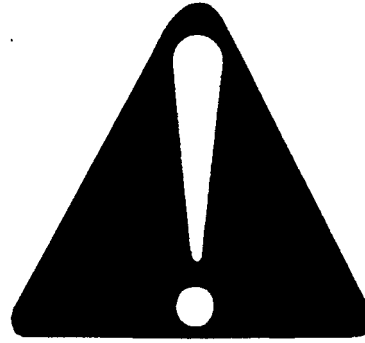
PROOF PROOF

Safety

Recognize Safety Information

This is a safety-alert symbol. When you see this symbol on your machine or in this manual, be alert to the potential for personal injury.

Follow recommended precautions and safe operating practices.



T81389 —UN—28JUN13

DX,ALERT -19-29SEP98-1/1

Understand Signal Words

A signal word—DANGER, WARNING, or CAUTION—is used with the safety-alert symbol. DANGER identifies the most serious hazards.

DANGER or WARNING safety signs are located near specific hazards. General precautions are listed on CAUTION safety signs. CAUTION also calls attention to safety messages in this manual.

▲ DANGER

▲ WARNING

▲ CAUTION

TS187 —19—30SEP88

DX,SIGNAL -19-03MAR93-1/1

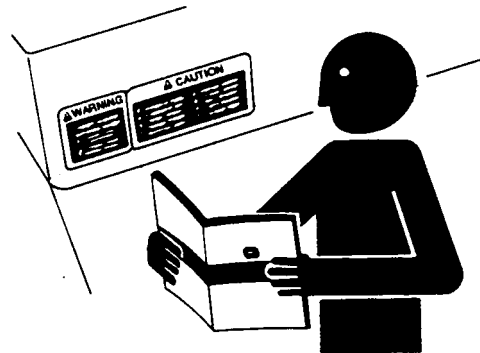
Follow Safety Instructions

Carefully read all safety messages in this manual and on your machine safety signs. Keep safety signs in good condition. Replace missing or damaged safety signs. Be sure new equipment components and repair parts include the current safety signs. Replacement safety signs are available from your John Deere dealer.

There can be additional safety information contained on parts and components sourced from suppliers that is not reproduced in this operator's manual.

Learn how to operate the machine and how to use controls properly. Do not let anyone operate without instruction.

Keep your machine in proper working condition. Unauthorized modifications to the machine may impair the function and/or safety and affect machine life.



TS201 —UN—15APR13

If you do not understand any part of this manual and need assistance, contact your John Deere dealer.

DX,READ -19-16JUN09-1/1

Practice Safe Maintenance

Understand service procedure before doing work. Keep area clean and dry.

Never lubricate, service, or adjust machine while it is moving. Keep hands, feet, and clothing from power-driven parts. Disengage all power and operate controls to relieve pressure. Lower equipment to the ground. Stop the engine. Remove the key. Allow machine to cool.

Securely support any machine elements that must be raised for service work.

Keep all parts in good condition and properly installed. Fix damage immediately. Replace worn or broken parts. Remove any buildup of grease, oil, or debris.

On self-propelled equipment, disconnect battery ground cable (-) before making adjustments on electrical systems or welding on machine.

On towed implements, disconnect wiring harnesses from tractor before servicing electrical system components or welding on machine.



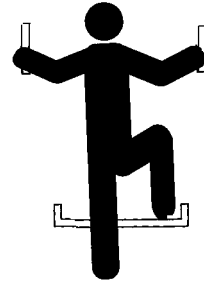
TS218 —UN—23AUG88

DX,SERV -19-17FEB99-1/1

Use Steps and Handholds Correctly

Prevent falls by facing the machine when getting on and off. Maintain 3-point contact with steps, handholds, and handrails.

Use extra care when mud, snow, or moisture present slippery conditions. Keep steps clean and free of grease or oil. Never jump when exiting machine. Never mount or dismount a moving machine.



T133468 —UN—15APR13

DX,WW,MOUNT -19-12OCT11-1/1

ROOF

Handle Electronic Components and Brackets Safely

Falling while installing or removing electronic components mounted on equipment can cause serious injury. Use a ladder or platform to easily reach each mounting location. Use sturdy and secure footholds and handholds. Do not install or remove components in wet or icy conditions.

If installing or servicing a RTK base station on a tower or other tall structure, use a certified climber.

If installing or servicing a global positioning receiver mast used on an implement, use proper lifting techniques and wear proper protective equipment. The mast is heavy and can be awkward to handle. Two people are required when mounting locations are not accessible from the ground or from a service platform.



TS249 —UN—23AUG88

DX,WW,RECEIVER -19-24AUG10-1/1

Use Electronic Display Properly

Electronic displays are secondary devices intended to aid the operator in performing field operations, increase comfort and provide entertainment. Displays offer a wide range of functionality, are used in many different machine system applications and can be used with other secondary devices such as handheld electronic devices.

A secondary device is any device that is not required to operate your machine for its primary use. The operator is always responsible for safe operation and control of the machine.

To prevent injury while operating the machine:

- Position the display according to the installation instructions. Ensure that the device is secured and does not obstruct the driver's view or interfere with the machine operating controls.
- Do not become distracted by the display. Stay alert. Pay attention to the machine and surrounding environment.

- Do not change settings or access any functions that require prolonged use of the display controls while machine is moving. Stop the machine in a safe location and place in park position before attempting such operations.
- Never set the volume so high that you cannot hear outside traffic and emergency vehicles.

To promote safe operation, certain functions of displays may be disabled unless the machine movement is restricted and/or has been placed in the park position. Overriding this safety feature may violate applicable law and can result in damage, serious injury, or death.

Only use available display functionality when conditions permit you to do so safely and in accordance with instructions provided. Always observe safe driving rules, state, or local laws and traffic regulations when using any secondary device.

DX,ELEC,DISPLAY -19-13JAN15-1/1

Avoid Exposure to High Radio Frequency Fields

Prevent injury from exposure to high radio frequency fields at the Modular Telematics Gateway (MTG) 4G LTE and Satellite antennas. Do not touch the MTG or Satellite antennas while the system is transmitting. Always disconnect power to the MTG and Satellite antennas before installing or servicing.

The MTG and Satellite antennas should always be separated from the operator or nearby persons by a minimum distance of 20 cm (8 in.)



PC12632 —UN—04JUN10

AE77568,00001AD -19-23FEB16-1/1

Regulatory and Compliance Information

Federal Communications Commission Notifications to User

Modular Telematics Gateway 4G LTE and Satellite Module

These devices comply with Part 15 of the Federal Communications Commission (FCC) Rules. Operation is subject to the following two conditions: (1) These devices may not cause harmful interference, and (2) these devices must accept any interference received, including interference that may cause undesired operation.

These devices must be operated as supplied by John Deere Ag Management Solutions. Any changes or modifications made to these devices without the express written approval of John Deere Ag Management Solutions may void the user's authority to operate these devices.

This equipment has been tested and found to comply with the limits for Class B digital devices, pursuant to part 15

of the FCC Rules. These limits are designed to provide reasonable protection against harmful interference in a residential installation. This equipment generates, uses, and can radiate radio frequency energy and, if not installed and used in accordance with the instructions, may cause harmful interference to radio communications. However, no guarantee shall be made that interference will not occur in a particular installation. If this equipment does cause harmful interference to radio or television reception, which can be determined by turning the equipment off and on, the user is encouraged to try to correct the interference by one or more of the following measures:

- Reorient or relocate the receiving antenna.
- Increase the separation between the equipment and receiver.
- Connect the equipment into an outlet on a circuit different from that to which the receiver is connected.
- Consult the dealer or an experienced radio/TV technician for help.

AE77568,0000189 -19-23FEB16-1/1

Federal Communications Commission Notifications to User

Ethernet Switch

This device complies with part 15 of Federal Communications Commission (FCC) rules. Operation is subject to the following two conditions: (1) This device may not cause harmful interference; (2) this device must accept any interference received, including interference that may cause undesired operation.

This equipment has been tested and found to comply with the limits for a Class A digital device, pursuant to part 15

of the FCC Rules. These limits are designed to provide reasonable protection against harmful interference when the equipment is operated in a commercial environment. This equipment generates, uses, and can radiate radio frequency energy and, if not installed and used in accordance with the instruction manual, may cause harmful interference to radio communications. Operation of this equipment in a residential area is likely to cause harmful interference, in which case, the user will be required to correct the interference at his own expense.

AE77568,000001E -19-24FEB15-1/1

Industry Canada Notifications to User

John Deere JDLINK™

This device complies with Industry Canada licence-exempt RSS standard(s). Operation is subject to the following two conditions: (1) this device may not cause interference, and (2) this device must accept any interference, including interference that may cause undesired operation of the device.

Modular Telematics Gateway 4G LTE and Satellite Module.

Under Industry Canada regulations, this radio transmitter may only operate using an antenna of a type and maximum (or lesser) gain approved for the transmitter by Industry Canada. To reduce potential radio interference to other users, the antenna type and its gain should be so chosen that the equivalent isotropically radiated power (e.i.r.p.) is not more than that necessary for successful communication.

These radio transmitters (Modular Telematics Gateway 4G LTE IC: 11137A-MA4G and Satellite Module IC: 4650A-Q9612) have been approved by Industry Canada to operate with the antenna types listed below with the maximum permissible gain and required antenna impedance for each antenna type indicated. Antenna types not included in this list, having a gain greater than the maximum gain indicated for that type, are strictly prohibited for use with these devices.

PFA10877, PFA10878, PFA10879, PFA10880, PFA10881, PFA10882, PFA10883 (MTG 4G LTE High Performance Antenna)

PFA10889, PFA10890, PFA10891, PFA10896 (MTG 4G LTE Low Profile Antenna)

GPS / GSM / Wireless Antenna: Omnidirectional

- GPS L1: 1575 ± 2 MHz Frequency
- GLONASS: 1597.551—1605.886 MHz Frequency
- GSM 850: 824—894 MHz Frequency
- GSM 900: 880—960 MHz Frequency
- GSM 1700: 1710—1755, 2110—2170 MHz Frequency
- GSM 1800: 1710—1880 MHz Frequency
- GSM 1900: 1850—1990 MHz Frequency
- 50 Ω Required Impedance
- 26 ± 2 dB GPS L1 Maximum Permissible Gain
- Wireless 2.4: 2401—2495 MHz Frequency
- Wireless 5: 4910—5825 MHz Frequency
- IEEE802.11a/b/g/n Compliant
- Bluetooth®: 2402—2480 MHz Frequency

PF81427

Satellite Antenna

- 1616—1625.5 MHz Frequency
- 50 Ω Required Impedance
- 0 dBi Maximum Permissible Gain

RF Exposure Guidance

This equipment complies with FCC and Industry Canada radiation exposure limits set forth for an uncontrolled environment. This equipment should be installed and operated with a minimum distance of 20 cm (8 in) between the radiator and persons. This transmitter must not be co-located or operating in conjunction with any other antenna or transmitter, except in accordance with FCC and Industry Canada multi-transmitter product procedures.

John Deere JDLINK™

Le présent appareil est conforme aux CNR d'Industrie Canada applicables aux appareils radio exempts de licence. L'exploitation est autorisée aux deux conditions suivantes : (1) l'appareil ne doit pas produire de brouillage, et (2) l'utilisateur de l'appareil doit accepter tout brouillage radioélectrique subi, même si le brouillage est susceptible d'en compromettre le fonctionnement.

Modular Telematics Gateway 4G LTE and Satellite Module

Conformément à la réglementation d'Industrie Canada, le présent émetteur radio peut fonctionner avec une antenne d'un type et d'un gain maximal (ou inférieur) approuvé pour l'émetteur par Industrie Canada. Dans le but de réduire les risques de brouillage radioélectrique à l'intention des autres utilisateurs, il faut choisir le type d'antenne et son gain de sorte que la puissance isotrope rayonnée équivalente (p.i.r.e.) ne dépasse pas l'intensité nécessaire à l'établissement d'une communication satisfaisante.

Le présent émetteur radio (Modular Telematics Gateway 4G LTE IC: 11137A-MA4G and Satellite Module IC: 4650A-Q9612) a été approuvé par Industrie Canada pour fonctionner avec les types d'antenne énumérés ci-dessous et ayant un gain admissible maximal et l'impédance requise pour chaque type d'antenne. Les types d'antenne non inclus dans cette liste, ou dont le gain est supérieur au gain maximal indiqué, sont strictement interdits pour l'exploitation de l'émetteur.

PFA10877, PFA10878, PFA10879, PFA10880, PFA10881, PFA10882, PFA10883 (MTG 4G LTE High Performance Antenna)

PFA10889, PFA10890, PFA10891, PFA10896 (MTG 4G LTE Low Profile Antenna)

GPS/GSM/WLAN Antenna: Omnidirectional

- GPS L1: 1575 ± 2 MHz Frequency
- GLONASS: 1597.551—1605.886 Frequency
- GSM 850: 824—894 MHz Frequency
- GSM 900: 880—960 MHz Frequency
- GSM 1700: 1710—1755, 2110—2170 MHz Frequency
- GSM 1800: 1710—1880 MHz Frequency
- GSM 1900: 1850—1990 MHz Frequency
- 50 Ω Required Impedance
- 26 ± 2 dB GPS L1 Maximum Permissible Gain
- WLAN 2.4: 2401—2495 MHz Frequency
- WLAN 5: 4910—5825 MHz Frequency
- IEEE802.11a/b/g/n Compliant
- Bluetooth®: 2402—2480 MHz Frequency

PF81427

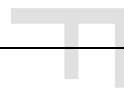
Iridium Satellite Antenna

- 1616 – 1625.5 MHz Frequency
- 50 Ohms Required Impedance
- 0 dBi Maximum Permissible Gain

RF Exposure Guidance

Cet équipement est conforme aux normes FCC et les limites d'exposition aux rayonnements Industrie Canada énoncées pour un environnement non contrôlé. Cet équipement doit être installé et utilisé à une distance minimale de 20 cm (8 in.) entre le radiateur et les personnes. Cet émetteur ne doit pas être co-localisées ou opérant en conjonction avec une autre antenne ou un autre émetteur, sauf en conformité avec la FCC et Industrie Canada Procédures de produits multi-émetteurs.

Bluetooth is a trademark of Bluetooth SIG



AE77568,00001F9 -19-28JUN16-2/2

PC22800 —UN—28JUN16

Third Party Software Notifications and Licenses

The copyrights for certain portions of the Software may be owned or licensed by other third parties (“Third Party Software”) and used and distributed under license. The Third Party Notices include the acknowledgements, notices, and licenses for the Third Party Software. The Third Party Notices are available on the CD included with this Operator’s Manual. The Third Party Software is licensed according to the applicable Third Party Software license notwithstanding anything to the contrary in the applicable Software End User License Agreement. The Third Party Software contains copyrighted software that is licensed under the GPL/LGPL or other copyleft licences.

Copies of those licenses are included in the Third Party Notices.

You may obtain the complete Corresponding Source Code from us for a period of three years after our last shipment of the Software by sending a request letter to:

Deere Open Source Compliance Team
 P.O. Box 1202
 Moline, IL 61266-1202 USA

Please include “source for John Deere MTG 4G LTE” and the version number of the software in the request letter. This offer is valid to anyone in receipt of this information.

AE77568,000020D -19-23JUN16-1/1

CCC A Class Statement

Modular Telematics Gateway 4G LTE

NOTE: This is a Class A product. In a Domestic environment this product may cause radio interference in which case the user may be required to take adequate measures.

AE77568,000018B -19-23FEB16-1/1

Toxic or Hazardous Substances or Elements Disclosure

The Environment Friendly Use Period (EFUP) marked on this product refers to the safety period of time in which the product is used under the conditions specified in the product instructions without leakage of noxious and harmful substances. The EFUP relates only to the environmental impact of the product in normal use, it does not imply product life.

PC15290 —UN—31OCT12



In accordance with the requirements specified in SJ/T11364-2006, all Modular Telematics Gateways 4G LTE (MTG 4G LTE) sold in the People's Republic of China are marked with the following pollution control logo.

Part Name	Toxic or hazardous substances and elements					
	Lead (Pb)	Mercury (Hg)	Cadmium (Cd)	Hexavalent Chromium (Cr (VI))	Polybrominated biphenyls (PBB)	Polybrominated dephenyl ethers (PBDE)
Cover	O	O	O	O	O	O
Enclosure	O	O	O	O	O	O
Plate	O	O	O	O	O	O
Plug	O	O	O	O	O	O
PCBA	X	O	O	O	O	O
Hardware	O	O	O	O	O	O
Cap	O	O	O	O	O	O
SIM Plug	O	O	O	O	O	O

O: Indicates that this toxic or hazardous substance contained in all of the homogeneous materials for this part is below the limit requirement in SJ/T11363-2006.

X: Indicates that this toxic or hazardous substance contained in at least one of the homogeneous materials for this part is above the limit requirement in SJ/T11363-2006.

AE77568,000018D -19-11JAN16-1/1

Identify Date Code

Modular Telematics Gateway 4G LTE

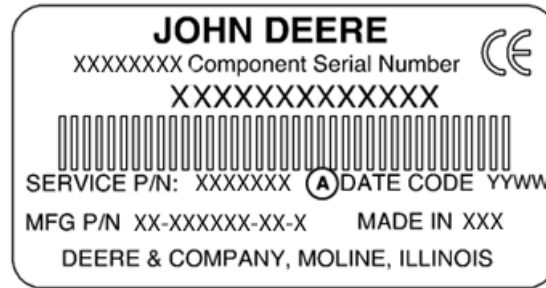
Use the date code (A) on the product label to identify the date of manufacture. "YY" (B) identifies the last two numbers of the year of manufacture; "WW" (C) identifies the week number of calendar year of manufacture.

NOTE: The week number of manufacture ranges between 01-53.

Date Code		
YY	Last Two Numbers of Year of Manufacture	Example: 11 = 2011 12 = 2012 13 = 2013
WW	Week Number of Calendar Year of Manufacture	Example: 01, 02, 03...53

A—Date Code (Date of Manufacture)
B—Last Two Numbers of Year of Manufacture

C—Week Number of Calendar Year of Manufacture



PC17574 —UN—16AUG13
Product Label Example



Date Code Example

AE77568,000018E -19-26FEB16-1/1

PC17568 —UN—16AUG13

Identify Date Code

Ethernet Switch

Use the date code on the product label to identify the date of manufacture (DOM) (A). "YY" (B) identifies the last two numbers of the year of manufacture; "WW" (C) identifies the week number of calendar year of manufacture.

NOTE: The week number of manufacture ranges between 01-53.

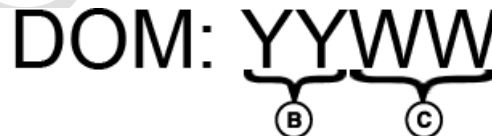
Date Code		
YY	Last Two Numbers of Year of Manufacture	Example: 13 = 2013 14 = 2014 15 = 2015
WW	Week Number of Calendar Year of Manufacture	Example: 01, 02, 03...53

A—DOM (Date Code)
B—Last Two Numbers of Year of Manufacture

C—Week Number of Calendar Year of Manufacture



PC19671 —UN—23MAY14
Product Label Example



Date Code Example

AE77568,000001D -19-20APR15-1/1

PC19597 —UN—29APR14

EC Declaration of Conformity

Deere & Company
Moline, Illinois U.S.A.

The person named below declares that

Products: John Deere Modular Telematics Gateway 4G LTE

Model MAMG

Number

fulfills all relevant provisions and essential requirements of the following directives:

Directive	Number	Certification Method
Radio and Telecommunications Terminal Equipment (R&TTE)	1999/5/EC	Annex III
Restriction of Hazardous Substances (RoHS)	2011/65/EU	Article 7 of the Directive

The product is in conformity with the following standards and/or other normative documents:

Article	Title of Standard
Health & Safety (Art.3(1)(a))	EN 60950-1:2005 (2nd Edition) + AM 1:2009; 1999/519/EC
EMC (Art. 3(1)(b))	EN 301 489-1 v1.9.2, EN 301 489-3 v1.4.1, EN 301 489-7 v1.3.1
Spectrum (Art.3(2))	EN 301 511 v9.0.2, EN 301 908-1 v5.2.1, EN 300 440-1 v1.4.1

Name and address of the person in the European Community authorized to compile the technical construction file:

Brigitte Birk
John Deere GmbH & Co. KG
Mannheim Regional Center (Zentralfunktionen)
John Deere Strasse 70
Mannheim, Germany D-68163

Place of declaration: Urbandale, Iowa

Date of declaration:

Manufacturing unit: John Deere Intelligent Solutions Group

DXCE01 —UN—28APR09

Name:

Title: Infrastructure Development Manager, John Deere
Intelligent Solutions Group



AE77568,00001AF -19-24FEB16-1/1

EC Declaration of Conformity

Deere & Company
Moline, Illinois U.S.A.

The person named below declares that

Products: Satellite Module

fulfill all relevant provisions and essential requirements of the following directives:

Directive	Number	Certification Method
Radio and Telecommunications Terminal Equipment (R&TTE)	1999/5/EC	Annex III

Name and address of the person in the European Community authorized to compile the technical construction file:

Brigitte Birk
Deere & Company European Office
John Deere Strasse 70
Mannheim, Germany D-68163

Place of declaration: Kaiserslautern, Germany

Date of declaration: 10 August 2010

Manufacturing unit: Phoenix International Corporation

Name: Hans Juergen Nissen

Title: Engineering Manager, Ag Management Solutions

DXCE01 —UN—28APR09



AE77568,00001B3 -19-26FEB16-1/1

EC Declaration of Conformity

Deere & Company
Moline, Illinois U.S.A.

The person named below declares that

Products: John Deere Ethernet Switch

fulfills all relevant provisions and essential requirements of the following directives:

Directive	Number	Certification Method
Electromagnetic Compatible Directive	2004/108/EC	Annex II of the Directive

Name and address of the person in the European Community authorized to compile the technical construction file:

Brigitte Birk
John Deere GmbH & Co. KG
Mannheim Regional Center (Zentralfunktionen)
John Deere Strasse 70
Mannheim, Germany D-68163

Place of declaration: Urbandale, Iowa

Date of declaration: 09 May 2012

Manufacturing unit: John Deere Intelligent Solutions Group

Name: Michael R. Moody

Title: Infrastructure Development Manager, John Deere
Intelligent Solutions Group

DXCE01 —UN—28APR09



AE77568,000001F -19-24FEB15-1/1

EC Declaration of Conformity



Deere & Company
Moline, Illinois U.S.A.

The person named below declares that

Products: Modular Telematics Gateway 4G LTE Antenna

Part Numbers PFA10877, PFA10878, PFA10879, PFA10880, PFA10881, PFA10882, PFA10883

fulfills all relevant provisions and essential requirements of the following directives:

Directive	Number	Certification Method
Radio and Telecommunications Terminal Equipment (R&TTE)	1999/5/EC	Annex III

Name and address of the person in the European Community authorized to compile the technical construction file:

Brigitte Birk
Deere & Company European Office
John Deere Strasse 70
Mannheim, Germany D-68163

Place of declaration: Kaiserslautern, Germany

Date of declaration:

Manufacturing unit: AeroAntenna Technology, Inc.

Name:

Title: Engineering Manager, Ag Management Solutions

DXCE01 —UN—28APR09



AE77568,00001B2 -19-24FEB16-1/1

P
R
O
O
F

Customs Union–EAC

Customs Unions - EAC

Information for products that bear conformity mark of the Customs Union member states

Manufacturer: Deere & Company
Moline, Illinois U.S.A

Model: Modular Telematics Gateway 4G LTE (JDMTG 4G LTE)
Made in USA

Name and address of the authorized representative in the Customs Union of Russia, Belarus and Kazakhstan:
Limited Liability Company "John Deere Rus"

Address: 142050, Russia, Moscow region, Domodedovo district, Domodedovo, Beliye Stolbi micro district, vladenye "Warehouse 104," Building 2.

For technical support, please contact your dealer.



Customs Unions - EAC

Information for products that bear conformity mark of the Customs Union member states

Manufacturer: Belden Inc.
1 North Brentwood Boulevard
Floor 15
St. Louis, Missouri 63105
USA

Model: Ethernet Switch OCTOPUS 5TX-EEC
Made in Germany

Name and address of the authorized representative in the Customs Union of Russia, Belarus and Kazakhstan:
Limited Liability Company "John Deere Rus"

Address: 142050, Russia, Moscow region, Domodedovo district, Domodedovo, Beliye Stolbi micro district, vladenye "Warehouse 104," Building 2.

For technical support, please contact your dealer.



Continued on next page

AE77568,00001AE -19-24FEB16-1/3

PC22192 —UN—24FEB16

PC20930 —UN—11MAR15

Таможенный союз – ЕАС

Информация об изделиях, которые имеют знак соответствия требованиям технических регламентов
Таможенного союза

Производитель: Компания Deere & Company
г. Молин, Штат Иллинойс, США

модель: Модульный телематический шлюз 4G (JDMTG 4G)
Сделано в США.

Наименование и адрес уполномоченного представителя на территории Таможенного союза России,
Белоруссии и Казахстана: Общество с ограниченной ответственностью "Джон Дир Русь"

Адрес:
142050, Россия, Московская область, Домодедовский район, г. Домодедово, микрорайон "Белые
столбы", владение "Склады 104," стр. 2.

Для получения технической поддержки обращайтесь к дилеру, обслуживающему вашу
организацию.



Таможенный союз — ЕАС

Информация об изделиях, которые имеют знак соответствия требованиям технических регламентов
Таможенного союза

Производитель: Belden Inc.
Север Брентвуд Бульвар 1,
15 этаж
г. Сент Луис, штат Миссури,
США 63105

Модель: Ethernet Switch OCTOPUS 5TX-EEC
Сделано в Германии

Наименование и адрес уполномоченного представителя на территории Таможенного союза России,
Белоруссии и Казахстана: Общество с ограниченной ответственностью "Джон Дир Русь"

Адрес:
142050, Россия, Московская область, Домодедовский район, г. Домодедово, микрорайон "Белые столбы",
владение "Склады 104," стр. 2.

Для получения технической поддержки обращайтесь к дилеру, обслуживающему вашу организацию.



Continued on next page

AE77568,00001AE -19-24FEB16-2/3

PC22193 —UN—24FEB16

PC20931 —UN—16MAR15

Кеден одағы–Еуразия одағы

Кеден Одағы мүшелерінің ережелеріне сәйкестік белгісі бар өнімдер туралы ақпарат

Өндіруші: Deere & Company
Молин, Иллинойс, АҚШ

Үлгі: Модульдік телематикалық шлюз 4G (JDMTG 4G)

АҚШ-та жасалған

Ресей, Беларусь және Қазақстан кеден одағындағы авторластырылған өкілінің атауы және мекенжайы:
Жауапкершілігі Шектеулі Серіктестік
"John Deere Rus"

Мекенжайы:
142050, Ресей, Мәскеу облысы, Домодедово қаласы, Белые столбы ықшам ауданы, "Склады 104," қожалығы, 2 үй.

Техникалық қолдау алу үшін дилеріңізбен хабарласыңыз.



Кеден одағы— Еуразия одағы

Кеден Одағы мүшелерінің ережелеріне сәйкестік белгісі бар өнімдер туралы ақпарат

Өндіруші: Belden Inc.
1 North Brentwood Boulevard
Floor 15
St. Louis, Missouri 63105
АҚШ

Үлгі: OCTOPUS 5TX-EEC Ethernet қосқышы

Германияда жасалған

Ресей, Беларусь және Қазақстан кеден одағындағы өкілеттенген өкілінің аты және мекенжайы: "John Deere Rus" жауапкершілігі шектеулі серіктестігі

Мекенжайы: 142050, Ресей, Мәскеу облысы, Домодедово қаласы, Белые столбы ықшам ауданы, "Склады 104," қожалығы, 2 үй.

Техникалық қолдау алу үшін дилеріңізбен хабарласыңыз.



PC22194 —UN—24FEB16

PC20832 —UN—16MAR15

AE77568,00001AE -19-24FEB16-3/3

System Overview

Modular Telematics Gateway Theory of Operation

Modular telematics gateway (MTG) is one of the main components that enable John Deere telematics solutions, including JDLINK™. MTG is a controller that contains firmware, a cellular modem, and a subscriber identification module (SIM) device. MTG transfers data to and from the JDLINK™ host server over a cellular network. MTG also contains a wireless modem that is used to transfer data when connected to a wireless network.

JDLINK™ requires the purchase of appropriate hardware and a JDLINK™ subscription. When MTG is powered on by machine for the first time, it registers with JDLINK™ host server and receives the authorization to report data.

MTG Communication

MTG sends and receives data and messages over cellular or wireless networks. MTG supports other telematics solutions, including Service ADVISOR™ Remote, John Deere Remote Display Access, John Deere Wireless Data Transfer, and John Deere Machine Sync shared data. Telematics solution applications, such as Remote Display Access, require an uninterrupted cellular connection to function. Other telematics solution applications, such as Wireless Data Transfer and Machine Sync shared data, store information on the display and transmit data when a cellular connection is established. Telematics solutions such as JDLINK™ do not require an uninterrupted cellular connection because MTG can store machine data for up to 1000 hours. When MTG returns to an area of cellular coverage, the most recent 1000 hr. of data are forwarded to the host server at its next scheduled time.

When powering down machine, MTG remains powered for the time needed for functions to complete. MTG enters a sleep state for up to 7 days. During sleep state, MTG calls in during its scheduled times. When JDLINK™ curfews and geofence alerts are set, MTG checks for any changes in its environment. After sleep state, MTG enters a hibernation state and is not able to send or receive data. The only way to wake MTG from hibernation state is to turn key switch on and power up machine.

Machine Sync Shared Data Capabilities

MTG supports machine to machine communication. Utilizing a Machine Sync activation, displays can share data, such as coverage maps and guidance lines, between multiple machines.

Remote Service Capabilities

MTG supports remote service capabilities. Service ADVISOR™ Remote is a tool for a dealer technician to service other machine controllers using the MTG. Operator

*JDLINK is a trademark of Deere & Company
Service ADVISOR is a trademark of Deere & Company
Bluetooth is a trademark of Bluetooth SIG
Apple is a trademark of Apple, Inc.
Android is a trademark of Google Inc.*

accepts the download and installation procedures. MTG controller receives firmware updates remotely from John Deere that do not require operator or dealer intervention.

Website

Data sent by MTG is made available to registered users using password-secured JDLINK™ website. Notifications are sent to users through e-mail or SMS text messaging. Dealer must log in to transfer MTG to new customer account.

View current and historical status of equipment on JDLINK™ website. Information is collected, such as location, machine hours, idle time, maintenance intervals, and other machine settings. Use website to send a request to MTG to view real-time status of a machine.

Wireless Network

Wireless modem within MTG allows communication to local networks (such as other machines, mobile devices, and computers), and local access points (such as a home or shop network). MTG can send and receive data and messages over a wireless network the same as over a cellular network.

Bluetooth®

Bluetooth® wireless technology enables connectivity to mobile devices, such as a smartphone or tablet, for wireless network configuration and information viewing on machines without supported on-board displays.

SolutionsPlus App

NOTE: When making a wireless connection from machine to local network, individual data rates from that network may apply.

SolutionsPlus app for Apple® and Android™ devices configures wireless network for the machine's MTG. SolutionsPlus is required to connect machine to local wireless network. SolutionsPlus is available through the John Deere App Center.

To connect mobile device to machine, mobile device must be within 12.2 m (40 ft) of machine cab and key switch must be on while engine is off.

After turning key switch to Run, it takes about 1 min for Bluetooth® to become active. Once Bluetooth® on MTG is active, it is available for 10 minutes. Only one mobile device can connect to a machine at a time over Bluetooth® connection.

(Reference SolutionsPlus on-screen help for more information.)

Customer Owned SIM

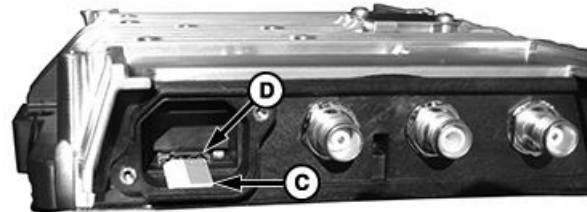
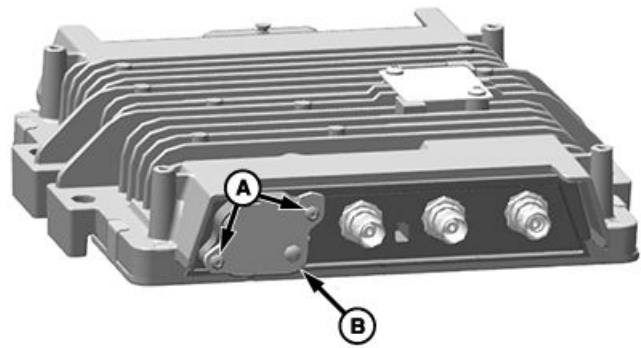
MTG contains slot for a micro Subscriber Identity Module (SIM) card for use in countries where customers provide their own SIM card. To insert micro SIM card:

NOTE: Turn key switch Off before inserting or changing SIM card.

1. Remove cap screws (A) and SIM insert (B).
2. Insert micro SIM card (C) into slot (D) as illustrated.
3. Reinstall insert and cap screws.

A—Cap Screw (2 used)
B—SIM Insert

C—Micro SIM Card
D—Micro SIM Card Slot



PC22044—UN—20JAN16

PC22025—UN—20JAN16

AE77568,000020C -19-28JUN16-1/1

Satellite Module Theory of Operation

In select regions, an optional satellite module is offered that is a companion to the modular telematics gateway (MTG). JDLink™ satellite module hardware looks like MTG hardware, but contains a satellite modem. Satellite modem allows MTG to transfer data to and from JDLink™ host server over a satellite connection when a valid cellular or wireless network is unavailable.

After satellite module is installed with MTG, satellite service must be activated for satellite module to communicate over satellite network.

Satellite Communication

Scheduled call frequency defaults to one call per day when using satellite module. This frequency can be changed to one time per week on website.

As long as MTG has cellular coverage, satellite module is not used. The MTG attempts to call using last successful method (cellular or satellite signal). If machine moves into an area of weak or no cellular coverage, MTG cannot complete a call. JDLink™ website shows that machine missed a call. One hour after the failed call, MTG escalates call to satellite module.

If MTG is set for a daily call in, completes a call, and moves out of cellular coverage with no red alerts or immediate calls required, the next call attempt is in 24 hours. It can take 25 hr before message is received or sent to machine.

*JDLink is a trademark of Deere & Company
Service ADVISOR is a trademark of Deere & Company*

Calls over satellite signal are marked with a satellite icon on JDLink™ website. Machine must have a clear view of the sky to connect to satellite network.

Alert Messages with Satellite

All telematics messages have a routing class and priority that determine whether they are sent immediately or with the next call attempt. There is special logic to determine whether messages are sent using MTG or satellite module if initial cellular call failed.

- Red alerts are sent immediately.
- Yellow and Informational alerts are at least 2 hr old before being sent with the next scheduled call, or with a website-initiated call or request to machine.
- Security alerts, such as geofence and curfew, depend on user-defined website settings.
- Requests sent from website to machine are retrieved within about 5 minutes. If request was the first communication with a machine after leaving an area of cellular coverage, requests can take up to 1 hour.

Some limitations exist when using satellite module. Applications that require an uninterrupted cellular connection are not supported. For example, Service ADVISOR™ Remote, John Deere Remote Display Access, John Deere Wireless Data Transfer, and John Deere Machine Sync shared data are not supported due to the satellite connection's limited capacity and latency.

AE77568,00001F0 -19-28JUN16-1/1

Data Collection

The JDLink / ZXLink product enables John Deere and John Deere dealers to access any data generated by the use of, collected by, or stored in the JDLink / ZXLink product or any device interfacing with the JDLink / ZXLink product ("Machine Data"). Purchase of the JDLink / ZXLink product, either separately or as part of a machine, signifies the purchaser's agreement that John Deere and John Deere dealers may collect, use and disclose the Machine Data as outlined in John Deere's Machine

Data Policy (www.JohnDeere.com/MachineDataPolicy). Purchasers may remove dealers' or John Deere's access to Machine Data via the Deere Telematics website (JDLink.Deere.com). However, removal of John Deere's access to Machine Data will prevent the purchaser from viewing Machine Data and from using the Service ADVISOR Remote service. Machine Data may be transferred out of the country where it is generated, including to the U.S.A.

CZ76372,0000542 -19-26NOV12-1/1

PROOF

JDLink™ Functions

NOTE: Not all functions are included in all levels of service. Contact your John Deere dealer or visit StellarSupport.com for more information.

NOTE: Not all levels of service are available in all countries. Contact your John Deere dealer or visit StellarSupport.com for availability.

NOTE: Not all levels of service are compatible with all machines. Contact your John Deere dealer or visit StellarSupport.com for complete list.

JDLink™ offers the following functions, depending on level of service:

Function	Description
Machine states	Ag machines are monitored by the following machine states: Idle, Working, and Transport. Detailed states are available for some machine types. C&F machines are monitored by the following machine states: Key-On, Idle, Low Load, Medium Load, and High Load. (Reference Help on JDLink™ website for more information, including machine state definitions for each machine type.)
Road map and satellite map location and driving directions	Map displays location of a machine when it last called in using Esri® mapping service. Map can be displayed as street map, satellite imagery with no street info, satellite imagery with street map overlay, or land contour map with street map overlay. Selecting machine icon lets user generate driving directions to or from machine.
Machine hours	Machine hours displays hours that a machine was on or off and the dates that hours were reported. User can use time filter to view hours for a specific date range.
Geofence and curfew alerts	Geofence allows user to set up a defined area. An alert can be set up to notify owner if machine enters or exits that specific geofence. Curfew alerts feature enables users to set when a machine should be allowed to turn on. For example, if users only want a machine to operate from 9 a.m. to 5 p.m., and that machine is started at 6:05 p.m., an alert is sent to the users. These alerts can be sent through e-mail or SMS text message, depending on operator's preference.
Hours of operation	Hours of operation function displays hours and time of day a machine was running or shutdown by month. Monthly reports can be printed or exported as either CSF or PDF files.
Export or scheduled e-mail report	Engine Hours Usage and Remote Display Access reports can be requested as e-mail reports. Alerts, Ultimate—Utilization, Ultimate—Fuel, and Maintenance reports can be scheduled to be e-mailed to up to five recipients at a specified frequency.
Service ADVISOR™ Remote	Service ADVISOR™ Remote (SAR) allows dealer technician to remotely access diagnostic trouble code information, create readings and recordings, and program controllers without having to visit the machine. (Reference Operating—Service ADVISOR™ Remote for more information).
Advanced machine utilization	MTG records data from sensors throughout the machine. The types of advanced machine utilization data collected vary by machine type and model. One example of machine utilization information is a table with amount of fuel consumed by each machine. Other examples are average fuel rate, average ground speed, average engine speed, and average coolant temperature.
System usage information (percent of AutoTrac™ utilization)	System usage information displays the amount of time that certain components and features of the machine are in use (for example, AutoTrac™ or IVT™).
Maintenance management	Maintenance profile allows users to view when their machines are coming due, are due, or are overdue for maintenance. Users may elect to allow third-party access to their local John Deere dealer, so maintenance can be scheduled right away.
Remote diagnostics using diagnostic trouble codes	JDLink™ can alert users when one of their machines issues a diagnostic trouble code. Managers can view the code on the website to know exactly which codes have been generated on the machine. Users can give a dealership access to their JDLink™ account to view maintenance profile of their machines. Users can also set up their account to send alerts to a dealership through E-mail or SMS text.
John Deere Remote Display Access (RDA)	RDA enables user to view the display of a machine being operated in the field live on an internet-connected device such as a computer, tablet, or smartphone.
John Deere Wireless Data Transfer (WDT)	WDT enables user to upload setup data and prescriptions to and download documentation data from a display using the MTG.

*JDLink is a trademark of Deere & Company
 Esri is a trademark of Environmental Systems Research Institute, Inc.
 Service ADVISOR is a trademark of Deere & Company
 AutoTrac is a trademark of Deere & Company
 IVT is a trademark of Deere & Company*

AE77568,00001F8 -19-28JUN16-1/1

Satellite Module Service Level

When the Satellite Module is in use, data from several JDLink™ functions are transferred from the machine to the website. However, not all functions are supported by the Satellite Module. The MTG is able to store this remaining data not sent by the Satellite Module for up to 1000 hours. On the next cellular call, the most recent 1000 hr of stored data is transferred to the website from the MTG.

There are currently nine data items that are common across John Deere agricultural machines regardless of service level with satellite access capability. These are listed below. To confirm that the Satellite Module is calling in and the MTG has a satellite configuration, check the website. On the “Terminal Setup” tab, both the “Communication” and “Last Call In” should show a satellite icon (A).

- Fuel Tank Level

JDLink is a trademark of Deere & Company

PC15291 —UN—26NOV12

Comm. ▾	Type	License	Registration Status	Last Call In
	MTG	Ultimate	Registered 04/18/2012	5:37 AM 05/31/2012 (4hours ago)

A—Satellite Icon

- Fuel Utilization
- Last Engine Hour meter
- Machine Utilization
- Max Coolant Temp
- Max Hydraulic Oil Temp
- Max Transmission Oil Temp
- Number.Aborted.Regen
- Number.Complete.Regen

AE77568,00001FB -19-28JUN16-1/1

PROOF

Component Overview

Components

JDLink™ system comprises the following hardware components:

- Modular Telematics Gateway
- Cellular, GPS, and Wireless Antenna
- Wireless Antenna (may not be included depending on machine type)

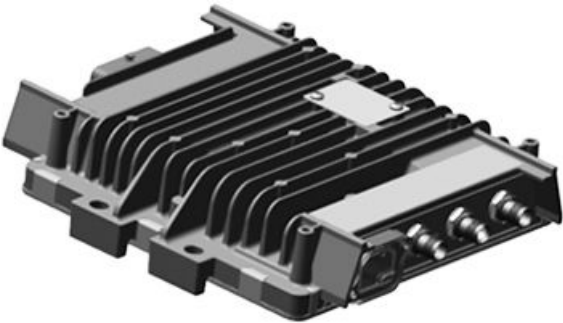
JDLink is a trademark of Deere & Company

- Satellite Module and Antenna (optional)
 - Satellite Module (select regions only)
 - Satellite Antenna (select regions only)
- Ethernet Switch (may not be included depending on machine type)

AE77568,00001F1 -19-15JUN16-1/1

Modular Telematics Gateway

MTG 4G LTE controller contains a main processor, cellular modem, GPS chipset, Subscriber Identity Module (SIM) card slot for customer-owned SIM in applicable countries, communications ports for system, LED status indicator, and Bluetooth® and wireless functionality.



Modular Telematics Gateway Controller

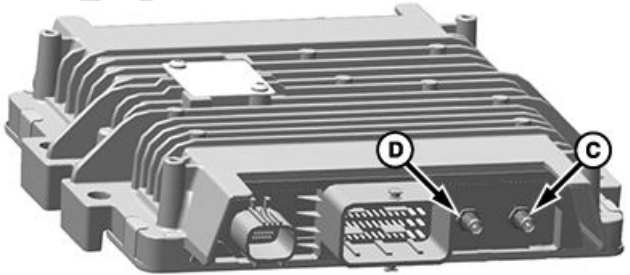
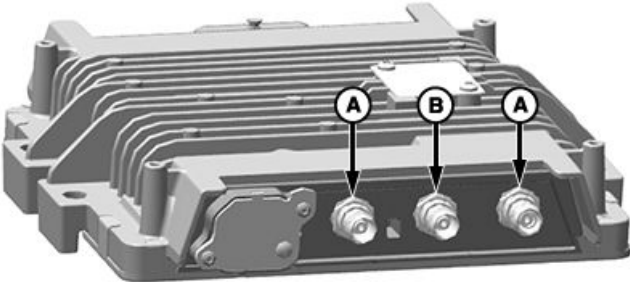
Bluetooth is a trademark of Bluetooth SIG

AE77568,00001F4 -19-28JUN16-1/3

PC22020 —UN—15JAN16

NOTE: The two cellular connectors (A) on the Modular Telematics Gateway (MTG) are interchangeable.

The MTG utilizes coaxial TNC connectors for both the GPS and cellular. In order to prevent incorrect connections, the connectors use opposing plugs and receptacles. The GPS connector (B) is a TNC plug and the cellular connectors are TNC receptacles. The matching connectors for cellular, GPS, and wireless are integrated into the antenna cable. On the opposite end of the MTG, there are two SMA connectors for wireless. The wireless connector on the right (C) is for the High Performance or Low Profile antenna. The Wireless connector on the left (D) is for the wireless antenna. To prevent incorrect connections, wireless connectors use reverse polarity.



A—Cellular Connector
B—GPS Connector

C—Wireless Connector—High Performance / Low Profile Antenna
D—Wireless Connector—Wireless Antenna

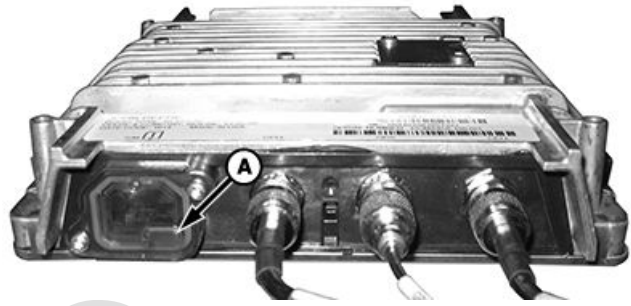
Continued on next page

AE77568,00001F4 -19-28JUN16-2/3

PC22629 —UN—12MAY16

PC22024 —UN—27JAN16

LED status indicator (A) indicates MTG's current state.



PC22663 —UN—18MAY16

A—LED Status Indicator

LED Frequency	LED Color	Status	Software Booted	GPS	Cellular	Wireless / Bluetooth®
Off	N/A	Sleep mode / Off				
Solid	Amber	Booting up				
Flashing	Magenta	On	X			
Solid	Magenta	On	X	X		
Flashing	Green	On	X		X	
Solid	Green	On	X	X	X	
Flashing	Blue	On	X			X
Solid	Blue	On	X	X		X
Alternating	Blue / Off / Green / Off	On	X		X	X
Alternating	Blue / Green / Blue / Green	On	X	X	X	X
Solid	White	Powering down	X			
Flashing	Red	CAN communication error since last startup	X			
Solid	Red	Internal error—replace MTG	X			

Bluetooth is a trademark of Bluetooth SIG

AE77568,00001F4 -19-28JUN16-3/3

Cellular, GPS, and Wireless Antenna

The two antennas are:

- High Performance: Provides the highest gain, longest range, and best performance.
- Low Profile: Has a shorter physical height than High Performance antenna.

Each antenna has four separate coaxial cables, two for cellular, one for GPS, and one for wireless. All the cables are bundled together within a single housing for ease of mounting.

NOTE: For best field performance, use High Performance antenna whenever possible.

GPS accuracy is degraded if there is not a clear view of the sky. GPS signal cannot be received inside a building.



High Performance Antenna



Low Profile Antenna

PC22042 —UN—19JAN16

PC22043 —UN—18JAN16

AE77568,00001F5 -19-26MAY16-1/1

Wireless Antenna

PC22092 —UN—27JAN16

Wireless antenna is used for close proximity or in-cab wireless connectivity.



Wireless Antenna

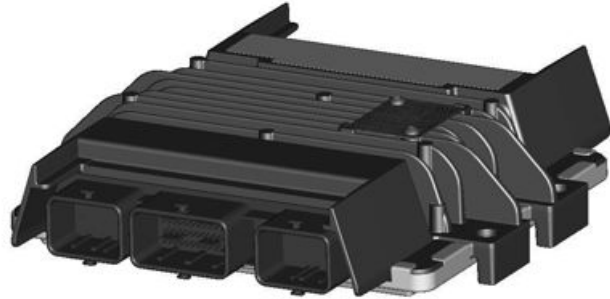
AE77568,00001F6 -19-26MAY16-1/1

Satellite Module and Antenna

Satellite Module

NOTE: Satellite Module is not offered and usage is not legal in all regions. Check with your John Deere dealer for availability.

Optional Satellite Module is intended to be a slave to the modular telematics gateway (MTG), and does not function properly as a standalone. In locations with poor cell coverage, the Satellite Module can be used to communicate instead of the MTG.

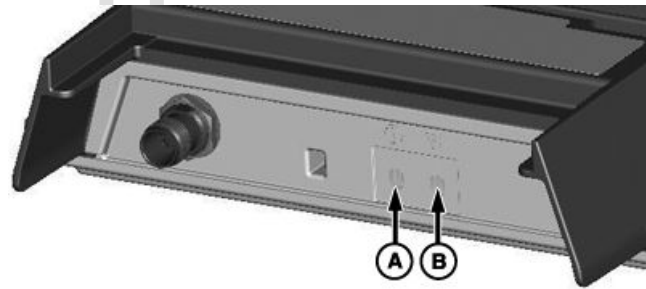


Satellite Module

PC12694 —UN—19JUL10

AE77568,00001F7 -19-28JUN16-1/3

The Satellite Module utilizes a single coaxial TNC connector for the antenna. The connector is a TNC receptacle. The matching connector is integrated into the antenna cable. There are two LED indicators on the end for the Satellite Module. The power indicator is on the left (A) and the network available indicator on the right (B). The power indicator LED (Green) glows whenever the module is commanded on by the MTG, and the network indicator LED glows (Red) when the Satellite Module detects the satellite network.



Satellite Module Header

PC15191 —UN—31MAY12

AE77568,00001F7 -19-28JUN16-2/3

A—Power Indicator

B—Network Available Indicator

Satellite Antenna

NOTE: Satellite Antenna is not offered and usage is not legal in all regions. Check with your John Deere dealer for availability.

The Satellite Antenna sends and receives messages from the Satellite Module.



Satellite Antenna

PC12642 —UN—11JUN10

AE77568,00001F7 -19-28JUN16-3/3

Ethernet Switch

Ethernet switch OCTOPUS 5TX-EEC has been especially designed for use in agricultural environments. It supports Ethernet 10 MBit/s and Fast Ethernet 100 MBit/s. Ethernet switch modules support switched Ethernet networks in accordance with IEEE standard 802.3 (10BASE-T) or 802.3u (100BASE-TX) using copper technology. Switch modules are fitted at installation site using screws. OCTOPUS 5TX-EEC modules have five 10/100 Mbit/s twisted pair ports (10BASE-T/100BASE-TX, shielded M12 connectors). It is possible to connect up to five DTE (data terminal equipment) or other TP/TX network segments to these ports using twisted pair cabling. TP ports support auto negotiation, autopolarity, and autocrossing. Ethernet switch conforms with protection class IP67 (protection against shock and foreign particles: dust proof, water protection: protected against the effects at temporary immersion in water). This device offers an IP-based Quality of Service (QoS) function.

NOTE: Ethernet Switch is not a required component of the JDLINK™ System.

If equipped, this device is intended to allow Ethernet connection to modular telematics gateway (MTG) for more than one device offered by John Deere.

JDLINK is a trademark of Deere & Company



Ethernet Switch

Installation of this Ethernet Switch requires a hardware installation kit. Contact your John Deere dealer for purchasing, installation, and support. Installation instructions may be found with the help of your John Deere dealer.

PC19634—JUN—15MAY14

AE77568,000001A -19-03MAR15-1/1

Ethernet Switch Operating Voltage

Ethernet Switch Operating Voltage	
Rated Voltage Range	12—24 V DC
Minimum Voltage Range	9 V DC
Maximum Voltage Range	32 V DC

AE77568,000001B -19-24FEB15-1/1

Operating—JDLink™ Website

Website Login

Creation of a Customer Account is required for new JDLink™ customers. Contact your John Deere dealer for assistance with creating a user name and password for your JDLink™ account.

When entering JDLink™ website, operator is prompted to enter user name and password. Operators with access

JDLink is a trademark of Deere & Company

to one organization are taken directly to their account. Operators with access to multiple organizations are provided a drop-down list of their organizations. Select an organization to view the information for that account.

RW00482.00002FF -19-23MAY14-1/1

Getting Started

JDLink / ZXLink Setup

Setup for the MTG can only be done through the JDLink / ZXLink website or by the dealer via Service ADVISOR.

NOTE: MTG cannot be set up using the machine or the GreenStar display.

Required Information

Your local John Deere dealer is responsible for transferring the JDLink terminal into the customer account. The following information will be needed for the transfer to be processed.

- Organization Information
This is the account that manages all the terminals and users for a business or group.
- Customer User Name

This profile will need to be the main user for the account so they can be setup as an administrator. This is also the same user name that the customer uses to access www.stellarsupport.com. If the customer does not have a Stellar Support profile, the dealership will need contact information to create the profile.

- Equipment Name
This is the JDLink / ZXLink terminal or machine name the dealer will be transferring into the customer account.

New Transferred Terminal

Once the dealer has transferred the terminal to the customer's organization, the customer will then log in to the JDLink / ZXLink website using their user name and password. Once transferred, the user can change the terminal setup information and settings.

When the terminal is configured to the user's preferences, it is ready to go.

CZ76372.000053B -19-26NOV12-1/1

Website Navigation

PC12706 —UN—04JUN12

JDLink™ User Guide

Select Help within the JDLink™ website to open the User Guide. The User Guide contains detailed information about navigating and using the website.



Website Icons

Pencil Icon — Edit button.

On/Off Icon — Turns features on or off.

Trash Can — Delete button.

Viewing Pane — A separate area in a split window.

Magnify Glass — Centers machine in map viewing pane.

Machine Key — Located in lower left-hand side of Dashboard page. A green circle next to machine name indicates that machine has JDLink™ Select

JDLink is a trademark of Deere & Company

Website Icons

active. A yellow circle next to machine name indicates that machine has JDLink™ Access, Ultimate, or Connect active. A blank or black circle next to machine name indicates that machine is inactive.

AE77568.00001FC -19-24MAY16-1/1

Operating—Service ADVISOR™ Remote

Overview

Service ADVISOR™ Remote (SAR) information in this manual is applicable to John Deere agricultural machines equipped with a compatible CommandCenter™ or GreenStar™ Display that communicates on the machine CAN Bus. SAR is not compatible with every machine equipped with a Modular Telematics Gateway (MTG).

(Refer to specific machine Operator's Manual for detailed SAR information.)

Theory of Operation

Service ADVISOR™ is a diagnostic tool used by John Deere dealers to perform diagnostics and updates to machine settings and software. Dealers can access diagnostic trouble codes and diagnostic addresses, create readings and recordings, and program controllers. This technology consists of software and hardware. Technicians attend a minimum of 8 hrs. of training to become certified in utilizing this tool.

SAR is a function of Service ADVISOR™ that allows the dealer technician to connect to an SAR-enabled machine using the JDLINK™ network to remotely access diagnostic trouble code information, record diagnostic data, and program controllers.

*Service ADVISOR is a trademark of Deere & Company
CommandCenter is a trademark of Deere & Company
GreenStar is a trademark of Deere & Company
JDLINK is a trademark of Deere & Company*

Similar to software (payload) updates in the computer industry, SAR enables John Deere to deliver updated software remotely using onboard JDLINK™ hardware. Remote programming gives John Deere the ability to update software to enhance machine performance. This capability can be used to reprogram most machine controllers. The user actively participates with the dealer in this process by downloading and installing the software update.

NOTE: Some machine controllers may not be compatible for SAR reprogramming.

Machine Compatibility

NOTE: If equipped, Access Manager provides the capability to unlock, partially lock, or lock operator access to specific components, including the ability to download and install software updates.

(Refer to machine Operator's Manual for more details.)

For a current list of approved machines, contact your John Deere dealer or visit StellarSupport.com.

RW00482,00002E3 -19-21MAY14-1/1

Vehicle Reprogramming

With SAR dealers have the ability to send new software to a vehicle to update controllers. Once the dealer sends the software, a message will appear on the display stating that there is new software available. Pressing Accept will take the user to the software updates page.



Software Update Available

Continued on next page

BA31779,000047A -19-04JUN12-1/5

PC12691 —UN—27JUL10

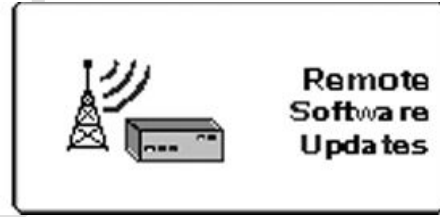
If the message is cancelled, the user can access the page by selecting the Menu button and then Remote Software Updates.

PC8663 —UN—29APR15



MENU button

PC12671 —UN—21JUL10



Remote Updates Menu Button

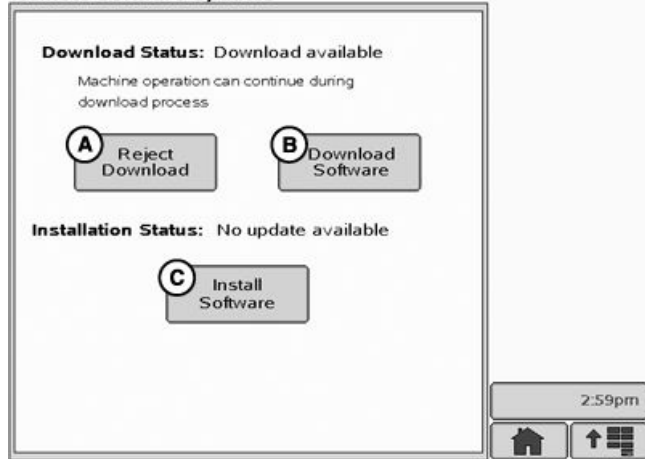
BA31779,000047A -19-04JUN12-2/5

Download Updates

On the Remote Software Updates page, the operator can either reject (A) or download (B) the new software. Pressing the Download Software (B) button will start the download process. This process will continue in the background and normal machine operation can continue.

- A—Reject Download Button
- B—Download Software Button
- C—Install Software Button

Remote Software Updates



Remote Software Updates

PC15179 —UN—31MAY12

Continued on next page

BA31779,000047A -19-04JUN12-3/5

Install Updates

Once the software has been downloaded and it is ready for installation, a message will appear on the display. Press the accept button to go to the Remote Software Updates page.

Software installation can take up to 40 minutes. Pressing the cancel button enables you to update the software at a later time if desired.



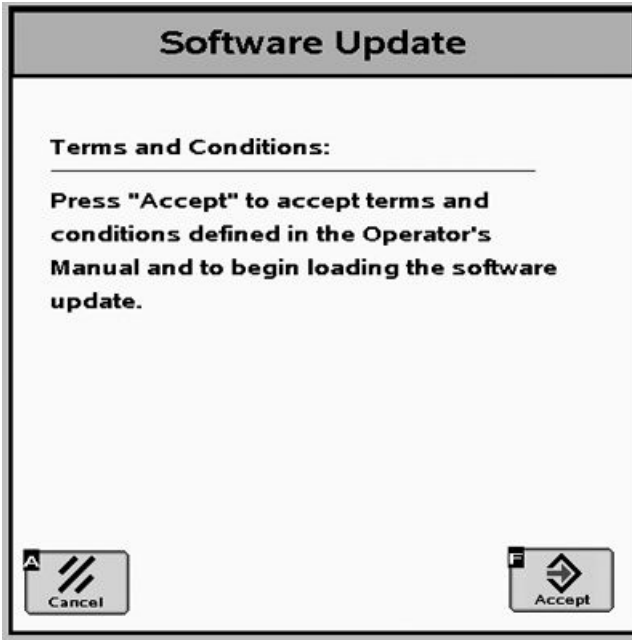
Update Ready for Install

Continued on next page

BA31779,000047A -19-04JUN12-4/5

PC12692 —UN—27JUL10

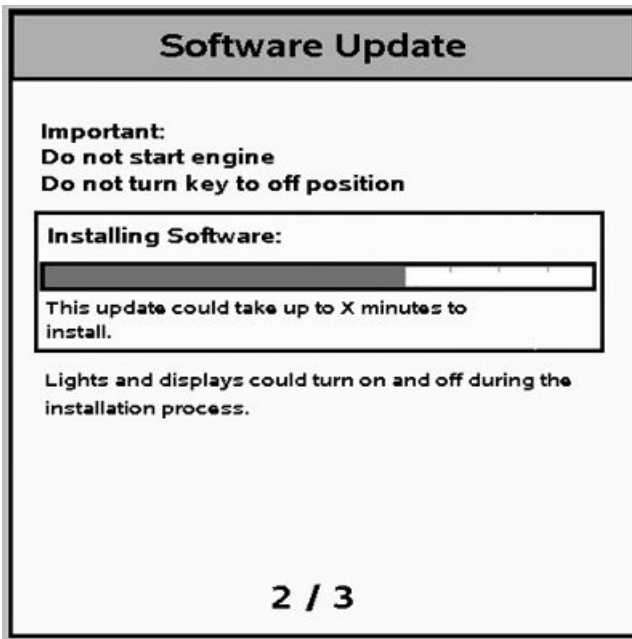
PROOF



PC12856 —UN—07SEP10



PC12672 —UN—28JUN10



PC12857 —UN—07SEP10



PC13582 —UN—09MAY11

On the Remote Software Updates page, press the Install Software button to begin the installation process.

CAUTION: Some vehicle functions, including lights, may become inoperable during reprogramming. To avoid injury, ensure the vehicle is in a safe location and configuration before reprogramming. Do not reprogram near public roadways or in active work sites.

Once prompted, accept the terms and conditions and then follow the on screen instructions.

If there is a problem during the install process, the system will try a second install. If the second attempt fails, please contact your John Deere dealer.

BA31779,000047A -19-04JUN12-5/5

Troubleshooting — Reprogramming

Symptom	Problem	Solution
Accessory Power Lost	Engine started or key turned off.	Do not start engine or remove power while software updates are being installed. Turn key off and return to ON position.
Voltage Low	The system voltage is too low to proceed with the software installation.	Turn off or remove accessories that are unnecessary. Check battery voltage and recharge battery if necessary.
Communication Fault	The software installation cannot be completed because of a communications fault.	Turn key off and then back to on. Then retry software installation. Contact a John Deere dealer if communication cannot be established.
Remote Software Updates button is not on display.	Cannot access Remote Software Updates page on the display.	Check harness and connections to MTG.

NOTE: Remote Software Updates should be available at all times, whether there is a payload or not.

JS56696,0000A25 -19-16NOV15-1/1

SOFTWARE TERMS AND CONDITIONS

IMPORTANT -- READ CAREFULLY: THIS SOFTWARE LICENSE AGREEMENT IS A LEGAL CONTRACT BETWEEN YOU AND THE LICENSOR ("LICENSOR") IDENTIFIED BELOW AND GOVERNS YOUR USE OF THE SOFTWARE DELIVERED TO YOUR MACHINE (THE "MACHINE").

BY INDICATING YOUR ACCEPTANCE ON A DISPLAY ON THE MACHINE, BY INSTALLING SOFTWARE TO THE MACHINE, OR USING SOFTWARE ON THE MACHINE, YOU ARE ACCEPTING AND AGREEING TO THE TERMS OF THIS LICENSE AGREEMENT WITH RESPECT TO THE SOFTWARE (THE "Software") THAT IS DELIVERED TO YOUR MACHINE. YOU AGREE THAT THIS SOFTWARE LICENSE AGREEMENT, INCLUDING THE WARRANTY DISCLAIMERS, LIMITATIONS OF LIABILITY AND TERMINATION PROVISIONS BELOW, IS BINDING UPON YOU, AND UPON ANY COMPANY ON WHOSE BEHALF YOU USE THE SOFTWARE AS WELL AS THE EMPLOYEES OF ANY SUCH COMPANY (COLLECTIVELY REFERRED TO AS "YOU" IN THIS SOFTWARE LICENSE AGREEMENT). IF YOU DO NOT AGREE TO THE TERMS OF THIS AGREEMENT, OR IF YOU ARE NOT AUTHORIZED TO ACCEPT THESE TERMS ON BEHALF OF YOUR COMPANY OR ITS EMPLOYEES, PLEASE CLICK THE [Decline] ICON ON THE DISPLAY ON THE MACHINE TO DECLINE THESE TERMS AND CONDITIONS. THIS LICENSE AGREEMENT REPRESENTS THE ENTIRE AGREEMENT CONCERNING THE SOFTWARE BETWEEN YOU AND THE LICENSOR.

- 1. Delivery of Software.** Software may be delivered to your Machine by Licensor wirelessly or via an agent of Licensor, such as a dealer. If it is delivered wirelessly, you may be responsible for any data transmission fees incurred due to such delivery.
- 2. License.** Licensor hereby grants to you, and you accept, a nonexclusive license to use the Software in machine-readable, object code form, only as authorized in this License Agreement and the applicable provisions of the Operators' Manuals, which you agree to review carefully prior to using the Software. The Software may be used only on the Machine to which it was initially delivered. You agree that you will not assign, sublicense, transfer, pledge, lease, rent, or share your rights under this License Agreement, except that you may permanently transfer all of your rights under this License Agreement in connection with the sale of the Machine on which the Software covered by this Agreement is installed.
- 3. Licensor's Rights.** You acknowledge and agree that the Software is proprietary to Licensor and is protected under copyright law. You further acknowledge and agree that all right, title, and interests in and to the Software, including associated intellectual property rights, are and shall remain with Licensor. This License Agreement does not convey to you any title or interest in or to the Software, but only a limited right of use revocable in accordance

with the terms of this License Agreement. You agree that you will not: (a) reverse assemble, reverse compile, modify, or otherwise translate the Software, or attempt to defeat the copyright protection and application enabling mechanisms therein; (b) copy or reproduce the Software; or, (b) remove or obliterate any copyright, trademark or other proprietary rights notices from the Software. You also agree not to permit any third party acting under your control to do any of the foregoing.

4. License Fees. The license fees paid by you, if any, are paid in consideration of the licenses granted under this License Agreement.

5. Limited Warranty. Licensor warrants, for your benefit alone and not for the benefit of any other party, that during the "**Warranty Period**" defined below, the Software will operate substantially in accordance with the applicable functional specifications ("**Specifications**") set forth in the Operators' Manuals. If, prior to expiration of the Warranty Period, the Software fails to perform substantially in accordance with the Specifications, you may return the Machine to the place of purchase for repair or replacement of the non-performing Software. The Warranty Period is ninety (90) days from the date of installation of the Software or the duration of the warranty period of the component of the Machine on which the Software is installed, whichever is longer. The Software Warranty Period does not affect the warranty period of the Machine itself or any component thereof.

6. DISCLAIMER OF WARRANTIES. YOU HEREBY AGREE THAT THE LIMITED WARRANTY PROVIDED ABOVE (THE "**LIMITED WARRANTY**") CONSTITUTES YOUR SOLE AND EXCLUSIVE REMEDY FOR ANY PROBLEM WHATSOEVER WITH THE SOFTWARE. EXCEPT AS PROVIDED IN THE LIMITED WARRANTY, THE SOFTWARE IS LICENSED "AS IS," AND LICENSOR, ITS AFFILIATES AND THIRD PARTY SUPPLIERS EXPRESSLY DISCLAIM AND YOU EXPRESSLY WAIVE, RELEASE AND RENOUNCE ALL WARRANTIES ARISING BY LAW OR OTHERWISE WITH RESPECT TO THE SOFTWARE, INCLUDING, BUT NOT LIMITED TO: ANY IMPLIED WARRANTY OF MERCHANTABILITY OR FITNESS FOR A PARTICULAR PURPOSE; ANY IMPLIED WARRANTY ARISING FROM COURSE OF PERFORMANCE, COURSE OF DEALING OR TRADE USAGE; ANY WARRANTY OF TITLE OR NON-INFRINGEMENT; AND, ANY OTHER WARRANTY ARISING UNDER ANY THEORY OF LAW, INCLUDING TORT, NEGLIGENCE, STRICT LIABILITY, CONTRACT OR OTHER LEGAL OR EQUITABLE THEORY. NO REPRESENTATION OR OTHER AFFIRMATION OF FACT INCLUDING, BUT NOT LIMITED TO, STATEMENTS REGARDING SUITABILITY FOR USE, SHALL BE DEEMED TO BE A WARRANTY BY LICENSOR OR ANY OF ITS AFFILIATES OR THIRD PARTY SUPPLIERS. LICENSOR DOES NOT WARRANT THAT THE SOFTWARE IS ERROR-FREE OR WILL OPERATE WITHOUT INTERRUPTION.

Continued on next page

AE77568,0000026 -19-06MAR15-1/4

7. LIMITATION OF LIABILITY. EXCEPT AS SET FORTH IN THE LIMITED WARRANTY, UNDER NO CIRCUMSTANCES SHALL LICENSOR, ITS AFFILIATES OR ITS THIRD PARTY SUPPLIERS BE LIABLE TO YOU OR TO ANY THIRD PARTIES FOR DIRECT, INDIRECT, INCIDENTAL OR CONSEQUENTIAL DAMAGES OF ANY KIND, INCLUDING ANY LOSS OR DAMAGE CAUSED BY THE SOFTWARE; ANY PARTIAL OR TOTAL FAILURE OF THE SOFTWARE; PERFORMANCE, NONPERFORMANCE OR DELAYS IN CONNECTION WITH ANY INSTALLATION, MAINTENANCE, WARRANTY OR REPAIRS OF THE SOFTWARE, DAMAGES FOR CROP LOSS, DAMAGE TO LAND, LOST PROFITS, LOSS OF BUSINESS OR LOSS OF GOODWILL, LOSS OF USE OF EQUIPMENT OR SERVICES OR DAMAGES TO BUSINESS OR REPUTATION ARISING FROM THE PERFORMANCE OR NON-PERFORMANCE OF ANY ASPECT OF THIS AGREEMENT, WHETHER IN CONTRACT, TORT OR OTHERWISE, AND WHETHER OR NOT LICENSOR, ITS AFFILIATES OR ITS THIRD PARTY SUPPLIERS HAVE BEEN ADVISED OF THE POSSIBILITY OF SUCH DAMAGES. IN NO EVENT SHALL LICENSOR'S CUMULATIVE LIABILITY TO YOU OR TO ANY OTHER PARTY FOR ANY LOSSES OR DAMAGES RESULTING FROM ANY CLAIMS, LAWSUITS, DEMANDS, OR ACTIONS ARISING FROM OR RELATING TO USE OF THE SOFTWARE EXCEED YOUR TOTAL PAYMENT FOR THE MACHINE AND FOR THE LICENSE OF THE SOFTWARE.

8. Termination of License. Licensor may terminate the license granted under this Agreement upon written notice of termination provided to you if you violate any material term of this Agreement pertaining to your use of the Software or Licensor's rights, including, without limitation, the provisions of Sections 2 and 3 above.

9. Compliance with Law. You agree that you will use the Software in accordance with United States law and the laws of the country in which you are located, as applicable, including foreign trade control laws and regulations. The Software may be subject to export and other foreign trade controls restricting re-sales and/or transfers to other countries and parties. By accepting the terms of this Agreement, you acknowledge that you understand that the Software may be so controlled, including, but not limited to, by the Export Administration Regulations and/or the foreign trade control regulations of the Treasury Department of the United States. Any other provision of this Agreement to the contrary notwithstanding, you agree that the Software will not be resold, re-exported or otherwise transferred. The Software remains subject to applicable U.S. laws.

10. Indemnification. You agree to defend, indemnify and hold Licensor, its affiliates and third party supplier, and their, officers, directors, employees, agents and representatives (each an "Indemnified Party"), harmless

from and against all claims, demands proceedings, injuries, liabilities, losses, or costs and expenses (including reasonable legal fees) brought by any third party against any such persons arising from or in connection with your use of the Software, regardless of whether such losses are caused, wholly or partially, by any negligence, breach of contract or other fault of an Indemnified Party.

11. Costs of Litigation. If any claim or action is brought by either party to this License Agreement against the other party regarding the subject matter hereof, the prevailing party shall be entitled to recover, in addition to any other relief granted, reasonable attorney fees and expenses of litigation.

12. Severability and Waiver. Should any term of this Agreement be declared void or unenforceable by any court of competent jurisdiction, such declaration shall have no effect on the remaining terms hereof. The failure of either party to enforce any rights granted hereunder or to take action against the other party in the event of any breach hereunder shall not be deemed a waiver by that party as to subsequent enforcement of rights of subsequent actions in the event of future breaches.

13. Language Clause. If you are a resident of Canada at the time you accept this Agreement, then the parties hereby acknowledge that they have required this Agreement, and all other documents relating hereto, be drawn up in the English language only. Les parties reconnaissent avoir demandé que le présent contrat ainsi que toute autre entente ou avis requis ou permis à être conclu ou donné en vertu des stipulations du présent contrat, soient rédigés en langue anglaise seulement. If you are a resident of any country other than the United States, Canada, Great Britain, Australia or New Zealand then you agree as follows: there may be a translated version of this Agreement. If there is an inconsistency or contradiction between the translated version and the English version of this Agreement, the English version of this Agreement shall control.

14. Assignment by Licensor. Licensor may assign this Agreement without your prior consent to any company or entity affiliated with Licensor, or by an assignment associated with a corporate restructuring, merger or acquisition.

15. Governing Law and Forum. This Agreement will be governed by and construed in accordance with the substantive laws identified in the table in Section 18, below. The respective courts of the venue identified in the table in Section 18, below, for the location of the Machine shall have non-exclusive jurisdiction over all disputes relating to this Agreement. This Agreement will not be governed by the conflict of law rules of any jurisdiction or the United Nations Convention on Contracts for the International Sale of Goods, the application of which is expressly excluded.

16. Specific Exceptions.

16.1 Limited Warranty for Users Residing in European Economic Area Countries or Switzerland.

If you obtained the Software in any European Economic Area country or Switzerland, and you usually reside in such country, then Section 6 does not apply, instead, Licensor warrants that the Software provides the functionalities set forth in the Operators Manuals (the "agreed upon functionalities") for the Warranty Period. As used in this Section, "Warranty Period" means one (1) year. Non-substantial variation from the agreed upon functionalities shall not be considered and does not establish any warranty rights. THIS LIMITED WARRANTY DOES NOT APPLY TO SOFTWARE PROVIDED TO YOU FREE OF CHARGE, FOR EXAMPLE, UPDATES, OR SOFTWARE THAT HAS BEEN ALTERED BY YOU, TO THE EXTENT SUCH ALTERATIONS CAUSED A DEFECT. To make a warranty claim, during the Warranty Period you must return, at our expense, the Software and proof of purchase to the location where you obtained it. If the functionalities of the Software vary substantially from the agreed upon functionalities, Licensor is entitled -- by way of re-performance and at its own discretion -- to repair or replace the Software. If this fails, you are entitled to a reduction of the purchase price (reduction) or to cancel the purchase agreement (rescission). For further warranty information, please contact Licensor at the address listed in Section 18.

16.2 Limitation of Liability for Users Residing in European Economic Area Countries or Switzerland.

(a) If you obtained the Software in any European Economic Area country or Switzerland, and you usually reside in such country, then Sections 7 and 10 do not apply. Instead, Licensor's statutory liability for damages shall be limited as follows: (a) Licensor shall be liable only up to the amount of damages as typically foreseeable at the time of entering into this Agreement in respect of damages caused by a slightly negligent breach of a material contractual obligation and (b) Licensor shall

not be liable for damages caused by a slightly negligent breach of a non-material contractual obligation.

(b) The aforesaid limitation of liability shall not apply to any mandatory statutory liability, in particular, to liability under the German Product Liability Act, liability for assuming a specific guarantee or liability for culpably caused personal injuries.

(c) You are required to take all reasonable measures to avoid and reduce damages, in particular to make back-up copies of the Software and your computer data subject to the provisions of this Agreement.

17. Representations of Licensee. BY ACCEPTING THIS AGREEMENT, YOU: (A) ACKNOWLEDGE THAT YOU HAVE READ AND UNDERSTAND THIS AGREEMENT; (B) REPRESENT THAT YOU HAVE THE AUTHORITY TO ENTER INTO THIS AGREEMENT; (C) AGREE THAT THIS AGREEMENT IS ENFORCEABLE AGAINST YOU AND ANY LEGAL ENTITY THAT OBTAINED THE SOFTWARE AND ON WHOSE BEHALF IT IS USED; AND, (D) AGREE TO PERFORM THE OBLIGATIONS OF THIS AGREEMENT.

18. Identification of Licensor and Notices. The Licensor is the entity identified in the table below. All notices to Licensor shall be sent by certified or registered mail to the corresponding address for the Licensor given below. In each case a copy of the notice shall also be sent to John Deere Intelligent Solutions Group, ATTN: Legal, 4140 114th Street Urbandale, IA 50322 U.S.A. All notices to Licensor shall be effective upon receipt. All notices required to be given to you shall, in Licensor's sole discretion, either be sent via certified or registered mail to the address given to Licensor in connection with your purchase of the Machine. Either method of notification used by Licensor shall be effective upon dispatch. You agree to notify Licensor of any change in your address in the manner set forth above.

Place of Purchase	Address	Governing Law	Venue
United States of America	John Deere Shared Services, Inc. One John Deere Place Moline, IL 61265 U.S.A.	State of Illinois, USA	Rock Island County, Illinois, USA
Argentina	Industrias John Deere Argentina, S.A. Casilla de Correo 80 Rosario (Santa Fe), 2000, Argentina	Province of Santa Fe, Argentina	Province of Santa Fe, Argentina
Australia or New Zealand	John Deere Limited (Australia) P.O. Box 2022 Crestmead, Queensland, Australia 4132	State of Queensland, Australia	State of Queensland, Australia
Canada	John Deere Limited 295 Hunter Road P.O. Box 1000 Grimsby, ON L9K 1M3	Province of Ontario, Canada	Province of Ontario, Canada
Chile	John Deere Water, S.A. Cerro Santa Lucia 9990 Quilicura, Santiago, Chile	Province of Santiago, Chile	Province of Santiago, Chile
Mexico	Industrias John Deere, S.A. de C.V. Boulevard Diaz Ordaz #500 Garza Garcia Nuevo Leon 66210, Mexico	State of Nuevo Leon, Mexico	State of Nuevo Leon, Mexico

Continued on next page

AE77568,0000026 -19-06MAR15-3/4

Europe	John Deere European Technology and Innovation Center Strassburger Allee 3 67657 Kaiserslautern, Germany	Federal Republic of Germany	Kaiserslautern, Germany
Other	The John Deere entity identified for the location of your Machine on www.JDLink.com.	The John Deere entity identified for the location of your Machine on www.JDLink.com.	The John Deere entity identified for the location of your Machine on www.JDLink.com.

AE77568,0000026 -19-06MAR15-4/4

PROOF
PROOF
PROOF

Specifications

Electrical Specifications

Modular Telematics Gateway and Satellite Module

- Input Voltage—The voltage range for switched and unswitched power 9-32VDC.

- Fuse recommendations—The device should be protected with a 10A fuse maximum.

CZ76372,000010B -19-10JUN11-1/1

PROOF
PROOF
PROOF

Index

	Page		Page
C		T	
Components	40-1	Terminal	
Cellular, GPS, and Wireless Antenna	40-2	Transfer	70A-1
MTG	40-1	Theory of Operation	30-1
Satellite Antenna	40-3	Transferring Terminal	70A-1
Satellite Module	40-3		
Wireless Antenna	40-3	W	
Connectors		Website	
MTG Antenna Connections	40-1	Icons	70A-1
Satellite Module Antenna Connections	40-3	Login	70A-1
		Navigation	70A-1
D		Z	
Data Collection	30-3	ZXLink	
		Setup	70A-1
E			
Electical Specifications	90-1		
Electronic display, use properly	05-3		
Ethernet Switch			
Customs Union–EAC	20-9		
EC Declaration of Conformity	20-7		
FCC Notifications to User	20-1		
Operating Voltage	40-4		
Overview	40-4		
G			
Getting Started	70A-1		
J			
JDLink			
Functions	30-4		
Overview	30-1		
Setup	70A-1		
Theory of Operation	30-1		
S			
Safety, Steps and Handholds			
Use Steps and Handholds Correctly	05-2		
Service ADVISOR Remote			
Download Updates	70B-2		
Install Updates	70B-3		
Overview	70B-1		
Reprogramming	70B-1, 70B-5		
Terms and Conditions	70B-6		
Theory of Operation	70B-1		
Troubleshooting	70B-5		
Vehicle Compatibility	70B-1		
Setup			
JDLink	70A-1		
Required Information	70A-1		
ZXLink	70A-1		
Specifications	90-1		

PROOF PROOF

John Deere Service Literature Available

Technical Information

Technical information can be purchased from John Deere. Publications are available in print or CD-ROM format.

Orders can be made using one of the following:

- John Deere Technical Information Store:
www.JohnDeere.com/TechInfoStore
- Call 1-800-522-7448
- Contact your John Deere dealer

Available information includes:

- PARTS CATALOGS list service parts available for your machine with exploded view illustrations to help you identify the correct parts. It is also useful in assembling and disassembling.
- OPERATOR'S MANUALS providing safety, operating, maintenance, and service information.
- TECHNICAL MANUALS outlining service information for your machine. Included are specifications, illustrated assembly and disassembly procedures, hydraulic oil flow diagrams, and wiring diagrams. Some products have separate manuals for repair and diagnostic information. Some components, such as engines, are available in a separate component technical manual.
- EDUCATIONAL CURRICULUM including five comprehensive series of books detailing basic information regardless of manufacturer:
 - Agricultural Primer series covers technology in farming and ranching.
 - Farm Business Management series examines "real-world" problems and offers practical solutions in the areas of marketing, financing, equipment selection, and compliance.
 - Fundamentals of Services manuals show you how to repair and maintain off-road equipment.
 - Fundamentals of Machine Operation manuals explain machine capacities and adjustments, how to improve machine performance, and how to eliminate unnecessary field operations.
 - Fundamentals of Compact Equipment manuals provide instruction in servicing and maintaining equipment up to 40 PTO horsepower.



TS189—UN—17JAN89



TS191—UN—02DEC88



TS224—UN—17JAN89



TS1663—UN—10OCT97

DX.SERVLIT -19-21APR16-1/1

PROOF PROOF

John Deere Service Keeps You On The Job

John Deere Parts

We help minimize downtime by putting genuine John Deere parts in your hands in a hurry.

That's why we maintain a large and varied inventory—to stay a jump ahead of your needs.



TS100—UN—23AUG88

DX,IBC,A -19-04JUN90-1/1

The Right Tools

Precision tools and testing equipment enable our Service Department to locate and correct troubles quickly . . . to save you time and money.



TS101—UN—23AUG88

DX,IBC,B -19-04JUN90-1/1

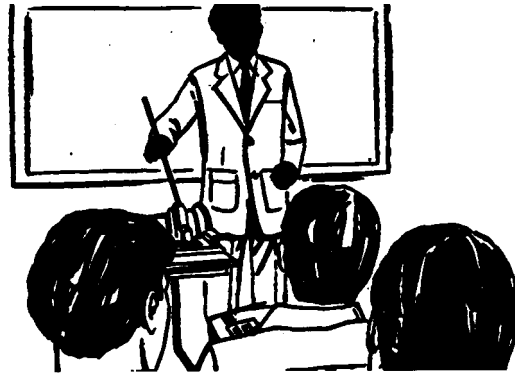
Well-Trained Technicians

School is never out for John Deere service technicians.

Training schools are held regularly to be sure our personnel know your equipment and how to maintain it.

Result?

Experience you can count on!



TS102—UN—23AUG88

DX,IBC,C -19-04JUN90-1/1

Prompt Service

Our goal is to provide prompt, efficient care when you want it and where you want it.

We can make repairs at your place or at ours, depending on the circumstances: see us, depend on us.

JOHN DEERE SERVICE SUPERIORITY: We'll be around when you need us.



TS103—UN—23AUG88

DX,IBC,D -19-04JUN90-1/1

PROOF PROOF

PROOF PROOF