

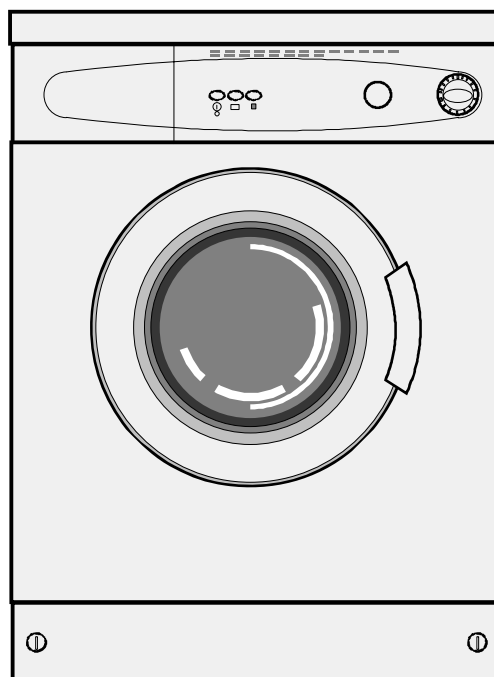
PAGE INDEX

| | |
|-----------|----------------------------------|
| 2 | INSTALLATION |
| 2 | • Packaging |
| 2 | • Transport fittings |
| 3 | • Levelling |
| 3 | • Water connection |
| 3 | • Water drainage |
| 4 | • Electrical connection |
| 4 | DETERGENT dispenser |
| 4 | CONTROL PANEL |
| 5 | FEATURES |
| 5 | • Detergent dispenser |
| 5 | • Temperature control |
| 5 | • Wash programme selector |
| 5 | • On / Off button |
| 5 | • No Heat button |
| 5 | • Rinse and hold button |
| 6 | • Door |
| 6 | HELPFUL HINTS |
| 7 | PROGRAMME SELECTION GUIDE |
| 8 | OPERATING THE MACHINE |
| 8 | • Sorting |
| 8 | • Loading |
| 8 | • Washing |
| 8 | • Unloading |
| 9 | CARE AND MAINTENANCE |
| 9 | • Detergent drawer |
| 9 | • Siphon |
| 9 | • Filters |
| 9 | • General cleaning |
| 10 | • The pump filter |
| 10 | FABRIC CARE LABELS |
| 11 | PROBLEM WASHING CHECK |
| 11 | TROUBLE SHOOTING |
| 13 | SERVICE CENTRES |
| 14 | WARRANTY |
| 15 | TECHNICAL SPECIFICATIONS |



You can rely on Defy

OWNER'S MANUAL



Automaid

600

www.defy.co.za

Thank you for choosing Defy

You are now the proud owner of one of the finest and most modern washing machines that today's technology can produce. You and your Automaid are going to make a great team together. But first it will pay if you really get to know each other. This book will tell you all you need to know about your machine, what it will do and how to do it. Please read all the instructions carefully before operating the machine.



Installation

Packaging

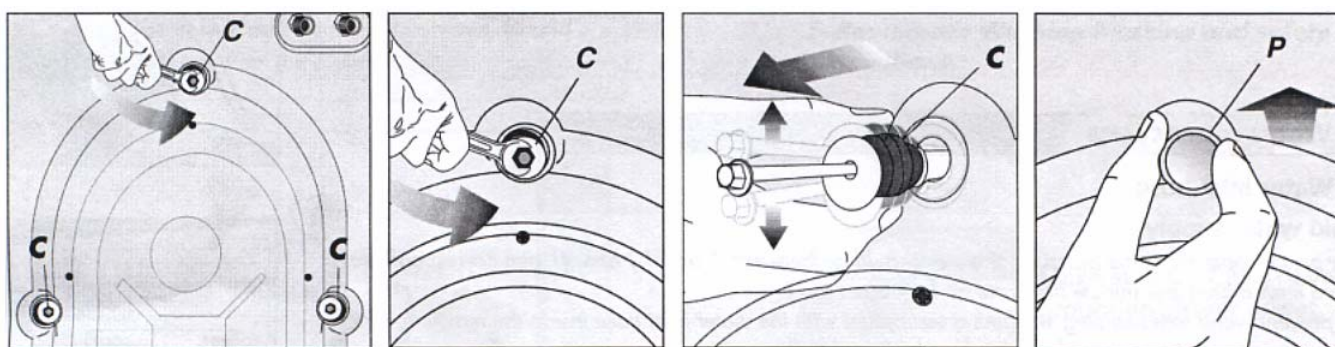
All packaging must be removed from the machine and disposed of in a responsible manner. Plastic bags and "Bubble wrap" sheets should be torn open to prevent children playing with them and accidentally suffocating.

Transport fittings

The wash drum is secured during transport to prevent damage.

Before using the machine, remove the transport fittings as follows:

1. Using a suitable spanner, loosen the three transport bolts (C) by turning them in an anti-clockwise direction until the bolts can be partially withdrawn.
2. Remove the bolts and the rubber bushes by pulling outwards. An up and down action together with a little dishwashing liquid will ease the removal.
3. Insert the three plastic plugs (P) supplied with the machine into the holes vacated by the transport fittings.

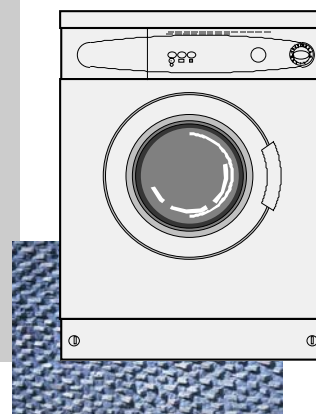


Note:

To prevent damage, the machine should not be transported without the transport fittings securely in place.

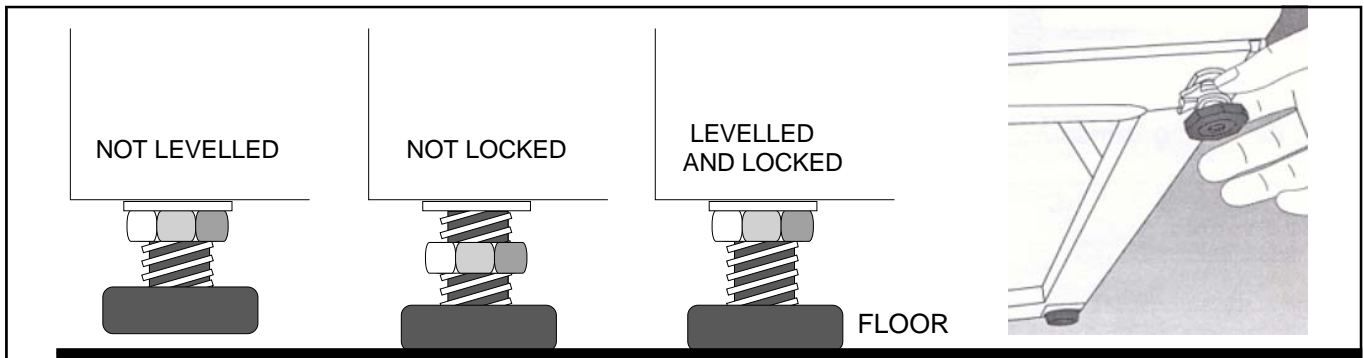
Note:

Never place the machine on a carpet. This could prevent air circulation and cause electrical components in the machine to overheat



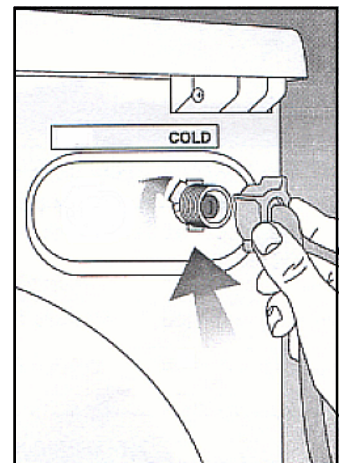
Levelling

1. The machine must stand firmly on the floor. Any instability will negatively affect its performance.
2. The machine has two adjustable feet at the front.
3. To level the machine, loosen the plastic lock nuts on the adjustable feet.
4. Rotate the feet until the machine stands firm and level.
5. Tighten the lock nuts firmly.
6. Caution : Never remove the lock nuts and feet from the machine.



Connecting to the cold water supply

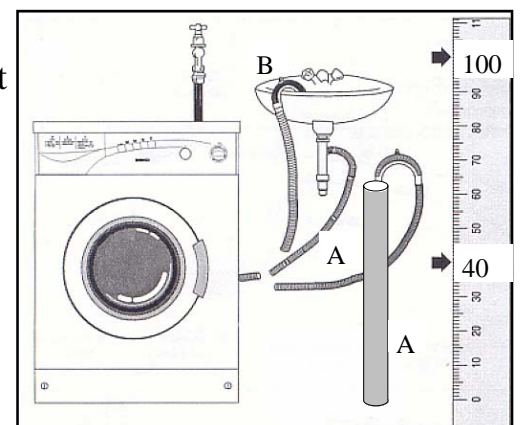
1. The water supply should deliver 8 to 80 litres per minute.
2. Sealing washers are supplied and these should be fitted at either end of the inlet hose.
3. Secure the angled end of the inlet hose to the water inlet at the rear of the machine and the straight end to a 3/4 inch BSP cold water tap.
4. Tighten both connections, open the tap and check for leaks.
5. We recommend that the tap be closed when the machine is not in use.



Water drainage

Draining into a dedicated outlet pipe (A)

1. The outlet pipe must have an inside diameter of at least 40 mm.
2. The end of the pipe must be positioned between 400 mm. and 1000 mm. above floor level.
3. Secure the hooked end of the drain hose into the outlet pipe.

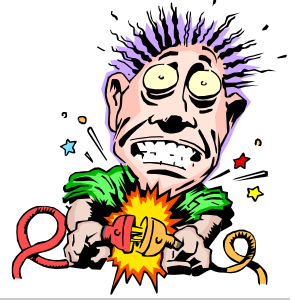


Draining into a sink or bath (B)

1. The drain hose may be hooked over the edge of a sink or bath in such a way that the end can not be immersed in the collected waste water.
2. The outlet end of the hose must be between 40 cm. and 100 cm. above floor level.
3. **Please note:** The outlet hose must be kept free of kinks or restrictions as these will hinder the operation of the machine

Electrical connection

1. The power cord must be connected to a 15 amp earthed wall socket
2. Do not connect the machine through a double adaptor. It requires a dedicated power point
3. If the power cord should ever need replacing, use only a genuine cord (Type 'X') available from the nearest Defy Service Centre.

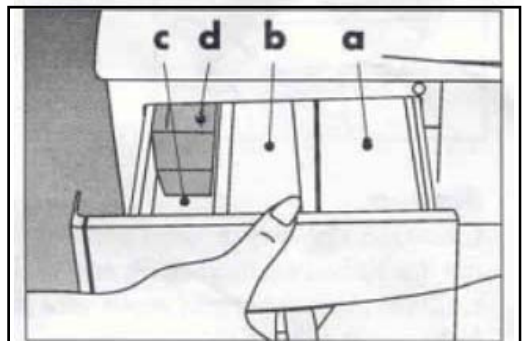


The appliance must be earthed and the manufacturer and seller do not accept responsibility for any damage due to incorrect electrical connection.

The detergent dispenser

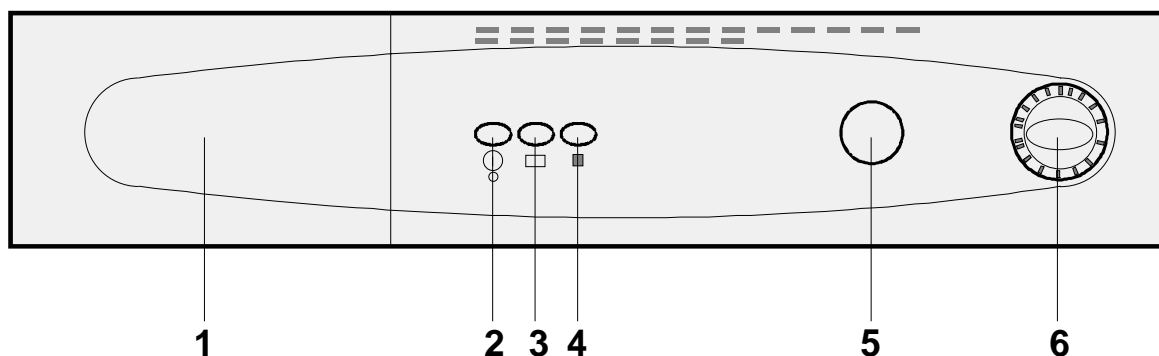
1. Open the dispenser
2. Place detergent / softener in the appropriate compartment of the dispenser, in accordance with the manufacturer's instructions
3. Detergent and additives will automatically be released at the appropriate time during the wash.
4. Concentrated softener may clog the siphon. In this case add some water to the softener liquid.

NOTE: Use only low foam detergents specifically designed for front loading washing machines



- (a) Pre-wash detergent
(b) Wash detergent.
(c)  Fabric softener
(d) Siphon

The control panel



1. Detergent dispenser
2. On / Off button
3. Rinse and Hold button
4. No spin button
5. Temperature selection knob
6. Programme selection knob

Features

1 Detergent dispenser.

The detergent dispenser has 3 compartments. (See page 4.)

Use only low foam detergents specifically designed for front loading automatic washing machines.

Dose as per the manufacturer's recommendations on the detergent pack.

Dosage may vary according to wash load, dirt and water hardness.

2 On / Off button.

Push the button for power 'ON'

The door will lock and the indicator light will glow

Push the button once more for power "OFF"

3 Rinse and Hold button


Selecting this feature will stop the machine during the final rinse cycle with water in the tub. This prevents drip-dry, permanent press and wool articles from creasing caused by waiting in a 'dry' machine before being removed. To complete the programme, press the button once more or select (H) on the programme selector to discharge the water.

4 No spin button

Selecting this feature will eliminate the spin cycle from any selected programme.

5 Temperature selector

To access the temperature selector knob, push it gently to free it from the control panel.

Select the temperature as indicated in the programme guide or a lower temperature if you desire. The knob is marked from 90°C to 30°C with  indicating ambient tap water temperature.

6 Wash programme selector

Push to free the knob from the control panel. Turn the knob in a **clockwise** direction to select the desired programme.

Warning

Switch the machine off before turning the knob

Features

Door

Open the door by gently pulling on the handle.

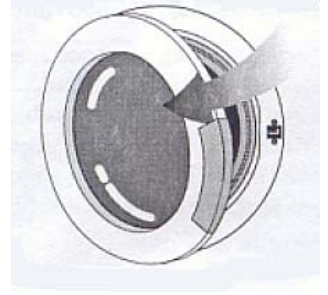
Close the door by pushing firmly until it clicks into place.

Note:

The door locks during the wash cycle

Switch the machine off and allow 1 to 2 minutes for the safety lock to disengage. (a click sound will be heard)

Thereafter the door may be opened.



Helpful hints

- Sort washing by material type.
- Adhere to garment label washing instructions.
- Fasten zips to prevent them snagging other articles.
- Mend loose seams and tears before washing.
- Secure all loose buttons.
- Empty all pockets of coins and loose objects.
- Secure or remove brassiere wires.
- Wash small articles such as socks, handkerchiefs and delicate undies in a wash bag or pillow slip. This will prevent tangling.
- Treat any stains before washing.
- Test fabrics for colourfastness before washing.
- Wash new denim separately as colours may run.
- Wash new bulky articles such as quilts and sleeping bags individually. For best results use the WOOL programme.
- Do not wash articles which have been soaked in paint, petrol, thinners, or other flammable liquids.
- Do not wash rubberised articles such as rain coats and training shoes.
- It is important not to overload the machine as this will prevent it from washing properly.



Programme selection guide

| PROGRAMME | | DETERGENT COMPT | °C | LOAD Kg. | OPTION BUTTONS RINSE & HOLD NO SPIN | |
|-------------------------------|---------------------|--------------------|---------------|-------------|---|---|
| COTTON AND LINENS | | | MAX 90 | | | |
| A WHITE PRE-WASH | HEAVILY SOILED | A -B-C | COLD To 90 | 5 | | ○ |
| B MAIN WASH | NORMALLY SOILED | B-C | COLD TO 90 | 5 | | ○ |
| X COLOUR FAST | LIGHTLY SOILED | B-C | COLD TO 60 | 5 | | ○ |
| M NON COLOUR FAST | VERY LIGHTLY SOILED | B-C | COLD TO 40 | 5 | | ○ |
| S COLD WASH | VERY LIGHTLY SOILED | B-C | COLD | 5 | | ○ |
| C SPIN | | | | 5 | | |
| SYNTHETICS | | | MAX 60 | | | |
| D PRE-WASH | HEAVILY SOILED | A-B-C | COLD TO 60 | 2.5 | ○ | ○ |
| F MAIN WASH | NORMALLY SOILED | B-C | COLD TO 60 | 2.5 | ○ | ○ |
| G RAPID WASH | LIGHTLY SOILED | B-C | COLD TO 40 | 2.5 | ○ | ○ |
| N COLD WASH | LIGHTLY SOILED | B-C | COLD | 2.5 | ○ | ○ |
| H SPIN | | | | 2.5 | | ○ |
| WOOLLEN / DELICATE | | | MAX 40 | | | |
| J MAIN WASH | WOOLLENS | B-C | COLD TO 40 | 1.5 | ○ | ○ |
| K DRAIN / SPIN | | | | 1.5 | | ○ |

Note: During heating there may be a period (10 to 15 minutes) during which there is no drum rotation This is normal and should not be regarded as a fault.

Operating the machine

Sorting the laundry

Sort the laundry in one of the following groups:

1. White cotton and linen as well as robust colourfast fabrics.
2. Synthetics and synthetic blends as well as non colourfast fabrics
3. Delicate fabrics such as silks and rayon
4. Wool

Loading the machine

It is important not to overload the machine as this will prevent it from washing properly. You should be able to fit a hand between the top of the drum and the wash load in the drum.

The maximum recommended load of dry clothing that may be washed at one time in your Automaid is 5 kg.

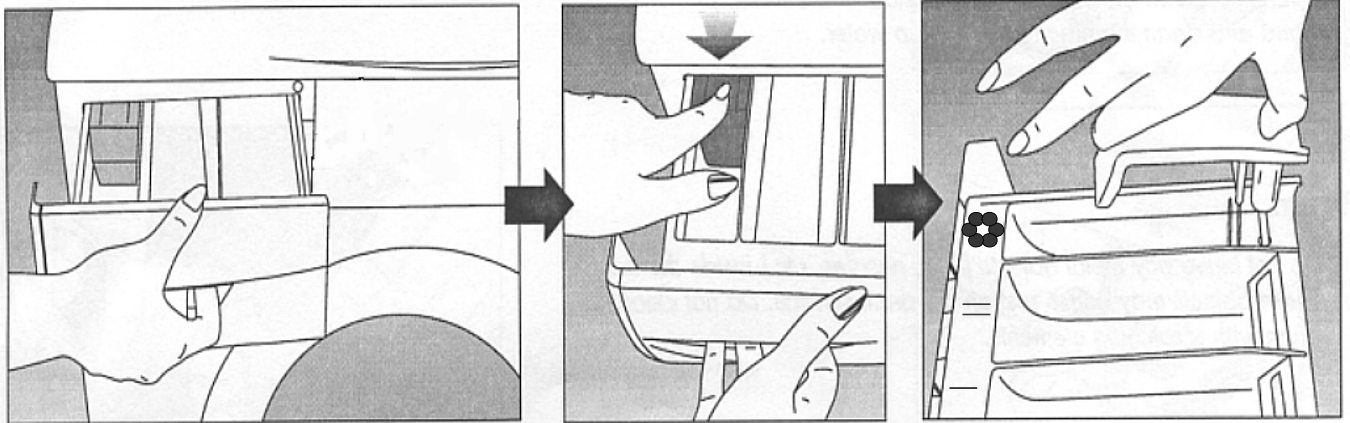
Washing

1. Plug the machine in and switch on at the wall socket.
2. Open the water tap.
3. Check that the drain hose is in position and is free of kinks.
4. Open the door.
5. Load washing into the machine, distributing it evenly and loosely in the drum.
DO NOT EXCEED THE MAXIMUM WASH LOAD AS DETAILED IN THE WASH GUIDE
6. Close the door.
7. Add detergents and additives to the relevant compartments in the detergent drawer and close the drawer.
8. Push the Temperature selection knob to free it from the facia. Select a temperature (see wash guide) by turning the knob to the required setting. Push the knob back in to prevent accidental activation.
9. Push the Programme selection knob to free it from the facia. Rotate the knob in a clockwise direction to the desired programme. Do not attempt to turn the knob back if the programme is inadvertently bypassed, rather continue around the dial once more. Push the knob back in to prevent accidental activation.
10. Select any of the desired option buttons as detailed in the wash guide.
11. Push the power 'ON' button
12. The indicator light will glow and the machine will commence with the selected wash cycle.

Unloading the machine

1. The machine will stop automatically at the end of the selected cycle.
2. Switch off the machine and allow time for the safety lock to disengage.
3. Open the door and remove the wash load.
4. Gently rotate the drum by hand to check if all the laundry has been removed
5. Close the tap.
6. Leave the door slightly ajar to assist with drying and to prevent unpleasant odours from forming.

Care and maintenance



Detergent Dispenser

To remove residual detergent, pull the dispenser drawer outward, press on the marked area of the siphon, and pull the drawer free.

Wash the dispenser and the housing in water before re-inserting the dispenser.

Siphon

To prevent clogging, the siphon (d -on page 4) should be cleaned after every 30 to 40 washes.

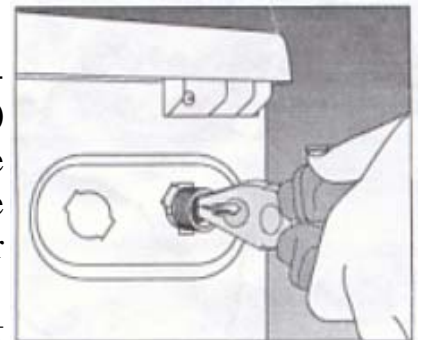
Grasp the edges and pull the siphon free.

Clean away any residual softener and carefully re-fit the siphon.

Water intake filter

The filters at the water intake point prevent dirt from entering the machine and should be cleaned every 30 to 40 washes. To clean the filters, close the tap, disconnect the hose and clean the filters with a small nylon brush. If the filter is very dirty you may need to remove it with a pair of long nosed pliers.

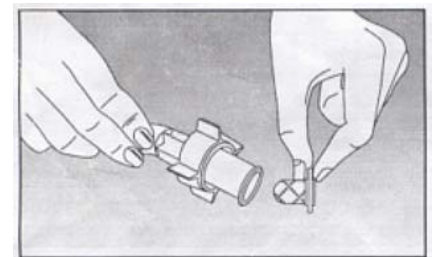
To clean the filter at the tap side of the hose, pull it out by hand and rinse under running water.



Hoses

Periodically check the inlet and outlet hoses for leaks, perishing or cracks. In very cold conditions water in the hoses may freeze. In this instance, empty the hoses after the wash is complete.

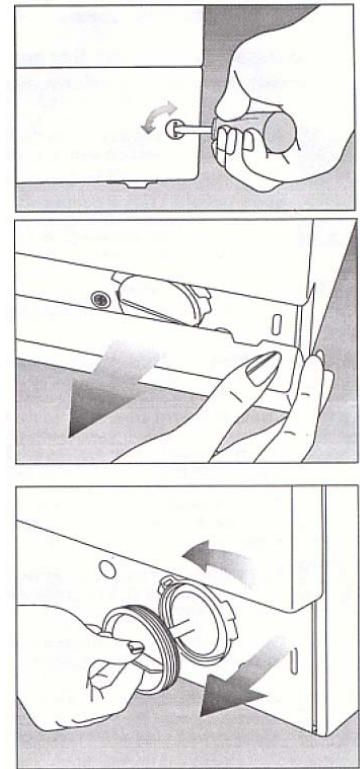
Replacement hoses may be purchased from your nearest Defy Service Centre.



Care and maintenance

Cleaning the pump filter

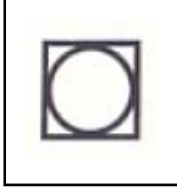
A filter prevents foreign objects from entering and damaging the pump. This filter should be cleaned after every 30-40 washes. First disconnect the machine from the power supply. Use a large screwdriver or coin to turn the plastic fasteners in the kick panel through 90°. Place a shallow container below the filter outlet to collect any spillage. Remove the filter by turning it in a counter clockwise direction. Rinse the filter under running water. Re-fit and secure the filter and kick panel. If the filter cap is not fitted properly, water will leak from the machine.



General Cleaning

On no account use benzene or other solvents to clean the cabinet, door or rubber of the machine. A damp cloth will normally suffice. If desired, a good wax polish may be used on the metal parts of the cabinet.

International fabric care labels

| | | | | | |
|---|---|---|---|---|----------------------------------|
|  | Recommended washing temperature |  | Bleach can be used |  | No dry cleaning |
|  | Do not use bleach |  | May be washed in centrifugal machine |  | No spin |
|  | Do not wash in centrifugal machine |  | Wash by hand only |  | Dry on horizontal surface |
|  | Line dry |  | Do not wash |  | Dry clean |
|  | Ironing is permitted |  | Use a warm, Not hot iron |  | Do not iron |

Problem washing—Check list

Greasy stains on washing.

- Use more detergent if washing is heavily soiled.
- Use both pre-wash and main wash programmes.
- Check that the machine is not overloaded.

Grey, dirty looking washing.

- Use more detergent if the washing is heavily soiled or if the machine is located in a hard water area.
- Use pre-wash and main wash programmes.
- Check that the machine is not overloaded.

Poor wash results

- Read the instruction book carefully
- Follow the manufacturer's instructions on the detergent pack.
- Sort out fabric types and separate natural from synthetic fabrics.
- Select the appropriate wash programme.
- Use fabric softeners for extra softness.
- Check that the machine is not overloaded.

Discolouring

- This could be caused by natural body oils or iron deposits in the water supply.
- Select the correct programme. (water not too hot)
- Use the correct detergent dosage.
- Wash the garment to the manufacturer's directions.
- Check that the machine is not overloaded.

Trouble shooting

If you experience a problem with the machine, please check the following before calling a Service technician. It may seem obvious, but you may be charged for a service call, even during the warranty period, if no fault is found.

Foam is expelled from the detergent dispenser.

Check:

- That detergent is suitable for front loading automatic washing machines. If the detergent is suitable, try using less detergent.

The machine drains as it fills.

Check:

- That the outlet hose is fitted as described in this manual.

Trouble shooting

The machine will not work at all.

Check:

- House fuses or circuit breakers.
- Wall socket (plug in another appliance to check)
- That the door is closed properly.
- That the water tap is open.
- That a programme has been selected.
- That the ON/ Off button has been pressed in.
- That the indicator light is on.

The machine does not drain or spin.

Check:

- That the drain hose is not kinked or obstructed.
- That the outlet pipe or sink is not blocked.

The machine does not fill with water.

Check:

- That the water tap is open.
- That the drain hose end is at least 400 mm. above floor level.
- That the inlet hose is not kinked.
- That there is a water supply to the tap.

The machine vibrates or is excessively noisy.

Check:

- Whether anything has fallen between the wall and the machine.
- That the machine stands level and that the feet are locked.
- That the transport brackets and all packaging has been removed.
- That there is a clearance of at least 50 mm. at the back of the machine.
- That the laundry is evenly distributed in the drum.
- That the wash load is balanced. (equally distributed round the drum)

The door will not open

Check:

- That the machine is switched off at the ON/OFF switch.
- That the safety lock has disengaged (wait at least two minutes)

The machine leaks water

Check:

- That the inlet and outlet hoses are secured .

Service Centres

If you have followed the instructions and still have a problem, contact the nearest Defy Service Centre. They will be able to advise you on any aspect of the product or send a qualified technician to repair it.

BLOEMFONTEIN P.O.Box 1691 Bloemfontein. 9300.
160 Long Street, Hilton,
Bloemfontein 9301.
Tel. 051 400 3900

CAPE TOWN P.O.Box 953 Milnerton. 7435
5A Marconi Rd.
Montague Gardens,
7441.
Tel. 021 551 8314

EAST LONDON P.O.Box 7006 East London 5200.
16 Bowls Rd. Arcadia,
East London 5201.
Tel. 043 743 7100

JOHANNESBURG P.O.Box 27150 Benrose 2011.
Cnr. Mimetes & Kruger Sts. Denver ext.12
Johannesburg. 2094.
Commercial Head Office, Tel. Sales, Administration,
Distribution, Commercial Head Office, National Groups,
Contracts and Credit.
Tel. 011 621 0200 or 011 621 0300

DURBAN P.O.Box 12004 Jacobs 4026.
174 Teakwood Rd.
Jacobs 4052.
Tel. 031 460 9712

POLOKWANE P.O.Box 1719 Polokwane 0700.
87 Nelson Mandela Drive.
Superbia 0699.
Tel. 0152 92 1166 / 7 / 8 / 9.

PORT ELIZABETH P.O.Box 2971 North End 6056.
3 Sidon Str.North End
Port Elizabeth.6001.
Tel. 041 401 6400

PRETORIA. P.O.Box 19768 Pretoria West 0117.
Block A1 Old Mutual Industrial Park.
Cnr. D.F.Malan Drive & Moot Str. Hermanstad. 0082.

**OTHER AREAS ARE SERVICED BY OVER 200 AUTHORISED SERVICE AGENTS.
PLEASE CONSULT THE NEAREST REGIONAL DEFY SERVICE CENTRE FOR DETAILS**

Warranty

This certificate is issued by DEFY APPLIANCES LIMITED manufacturers of Defy and Ocean products, hereinafter the Company, to the original purchaser only, of the appliance described on the certificate and shall constitute the only warranty given in respect of this appliance.

The Company warrants to the original purchaser that for a period of TWO YEARS from date of purchase the appliance is free from defect under normal domestic use, both in workmanship and material, subject to the following conditions.

1. Repair or replacement of any part of this appliance, found by the Company to be defective, shall be at the election of the Company. The Company reserves the right to effect such service through any of its Service Divisions or Authorised Service Dealers. The cost of such service shall be borne by the Company in full, provided that the appliance is located no further than 50 km. from a Company Service Centre or an Authorised Service Dealer. Where the appliance is located beyond the 50 km. radius, the purchaser shall be liable for the standard travelling charges, as determined by the Company.

CARRY IN SERVICE Microwave ovens, Compact cookers and small appliances are repaired in our service centres and are not collected from the customers home. Faulty units should be delivered to the purchasing dealer or to the nearest Company Service Centre for warranty repairs.

2. Vitreous enamelware, fuses and lamps are specifically excluded from these warranties. It is an express condition of these warranties that the purchaser takes due care and attention in the use and maintenance of the appliance. Abuse, misuse in conflict with operating instructions, connection to incorrect voltages and subjection to commercial use shall release the Company from its obligations.

3. This warranty shall become void and cease to operate if the appliance is dismantled by, or any repairs to the appliance are effected by any persons not duly authorised by the Company, or if substitute parts not approved by the Company are used in the appliance, or if the serial number of the appliance is removed.

4. The Company shall not be responsible for damages resulting from fire, flood, civil disturbances or any Act of God. The Company shall not, in terms of these warranties be responsible nor held liable for any consequential loss or damage of any kind caused by or due to the failure or malfunction of the appliance.

5. The Company shall not be responsible for transportation or other costs other than those incurred within the provisions of Point 1 of this Certificate.

6. These warranties shall not apply to the appliance if it is purchased or used beyond the borders of the Republic of South Africa, Namibia, Botswana, Swaziland and Lesotho.

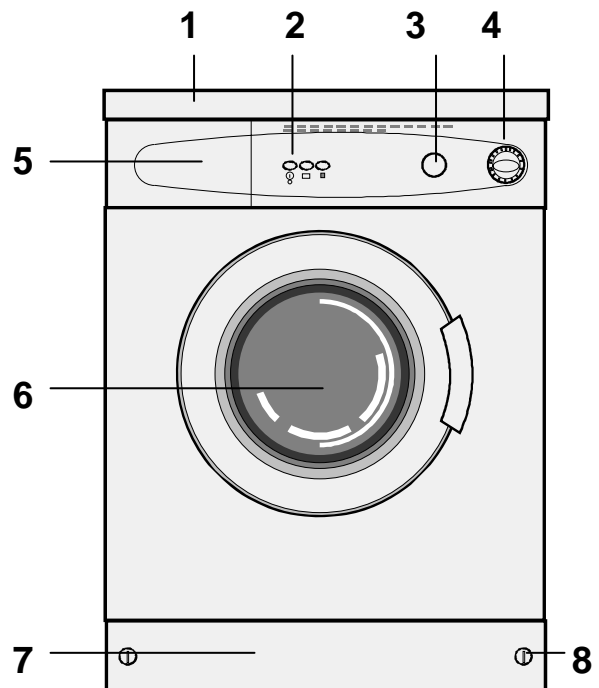
7. Where service is requested under warranty and no fault or defect can be found by the Company, all costs incurred will be for the purchaser's account.

8. This Certificate as well as your invoice will serve as proof of purchase. For the purpose of warranty, it will be essential to produce this Certificate and invoice. Failure to do so, will render the purchaser liable for service costs.

KEEP THIS CERTIFICATE AND SALES INVOICE AS PROOF OF PURCHASE FOR WARRANTY PURPOSES.

Technical specification

1. Lid
2. Option buttons
3. Temperature selector knob
4. Programme selector knob
5. Detergent dispenser
6. Door
7. Kick-panel
8. Kick-panel securing screw



| | |
|-------------------|--------------|
| Height | 850 mm. |
| Width | 600 mm. |
| Depth | 540 mm. |
| Net Weight | 66 kg. |
| Power requirement | 230V, 50 Hz. |
| Nominal current | 10 A |
| Power | 2250 W |
| Washing speed | 70 r/min |
| Spin speed | 600 r/min |

The Manufacturer strives for continuous improvements.
For this reason, the text and illustrations
in this book are subject to change without notice

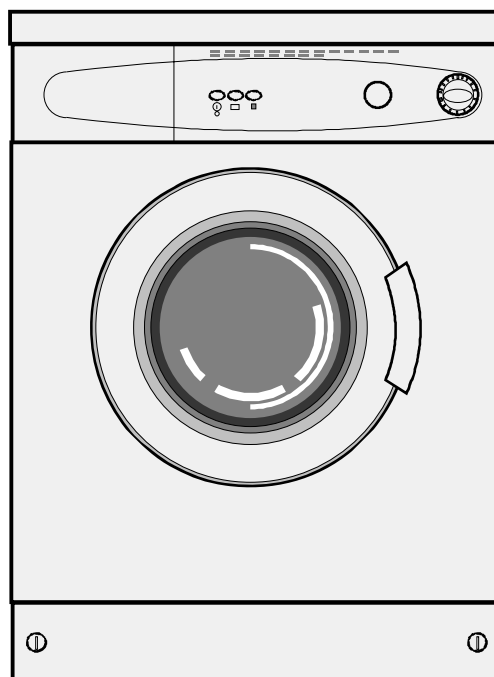
PAGE INDEX

| | |
|-----------|----------------------------------|
| 2 | INSTALLATION |
| 2 | • Packaging |
| 2 | • Transport fittings |
| 3 | • Levelling |
| 3 | • Water connection |
| 3 | • Water drainage |
| 4 | • Electrical connection |
| 4 | DETERGENT dispenser |
| 4 | CONTROL PANEL |
| 5 | FEATURES |
| 5 | • Detergent dispenser |
| 5 | • Temperature control |
| 5 | • Wash programme selector |
| 5 | • On / Off button |
| 5 | • No Heat button |
| 5 | • Rinse and hold button |
| 6 | • Door |
| 6 | HELPFUL HINTS |
| 7 | PROGRAMME SELECTION GUIDE |
| 8 | OPERATING THE MACHINE |
| 8 | • Sorting |
| 8 | • Loading |
| 8 | • Washing |
| 8 | • Unloading |
| 9 | CARE AND MAINTENANCE |
| 9 | • Detergent drawer |
| 9 | • Siphon |
| 9 | • Filters |
| 9 | • General cleaning |
| 10 | • The pump filter |
| 10 | FABRIC CARE LABELS |
| 11 | PROBLEM WASHING CHECK |
| 11 | TROUBLE SHOOTING |
| 13 | SERVICE CENTRES |
| 14 | WARRANTY |
| 15 | TECHNICAL SPECIFICATIONS |



You can rely on Defy

OWNER'S MANUAL



Automaid

600

www.defy.co.za