

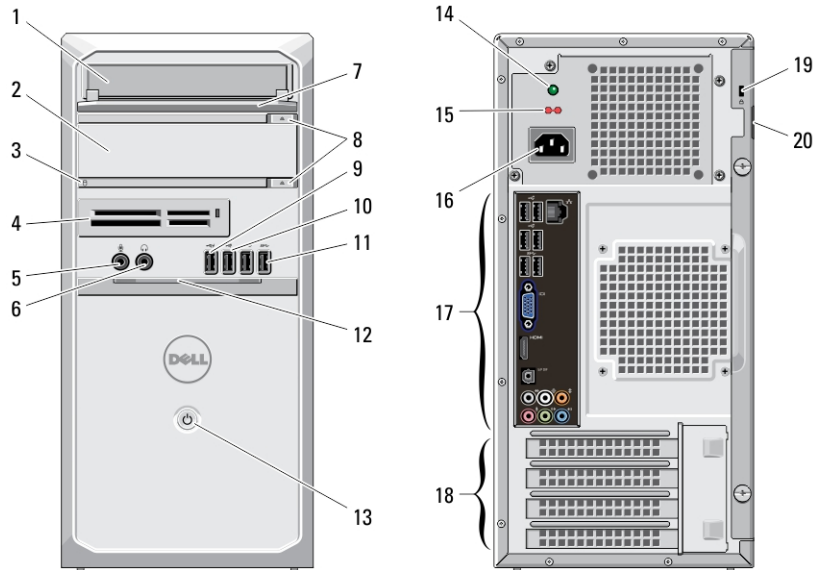
# Dell Vostro 470

## Setup And Features Information

### About Warnings


 **WARNING:** A WARNING indicates a potential for property damage, personal injury, or death.

### Front And Back View



**Figure 1. Front And Back View**

- |                                   |                                   |
|-----------------------------------|-----------------------------------|
| 1. CD/DVD drive                   | 12. front panel door (open)       |
| 2. CD/DVD drive (optional)        | 13. power button                  |
| 3. hard-drive activity light      | 14. power supply diagnostic light |
| 4. media card readers (optional)  | 15. voltage selector switch       |
| 5. microphone connector           | 16. power connector               |
| 6. headphone connector            | 17. back panel connectors         |
| 7. drive bay front panel (open)   | 18. expansion card slots (4)      |
| 8. CD/DVD drive eject buttons (2) | 19. security cable slot           |
| 9. powered USB 2.0 connector      | 20. padlock slot                  |
| 10. USB 2.0 connector             |                                   |
| 11. USB 3.0 connectors (2)        |                                   |

 **NOTE:** The second CD/DVD drive eject button is functional only if a second CD/DVD drive is installed in the computer.



Regulatory Model: D10M  
Regulatory Type: D10M002  
2011 - 10

# Back Panel

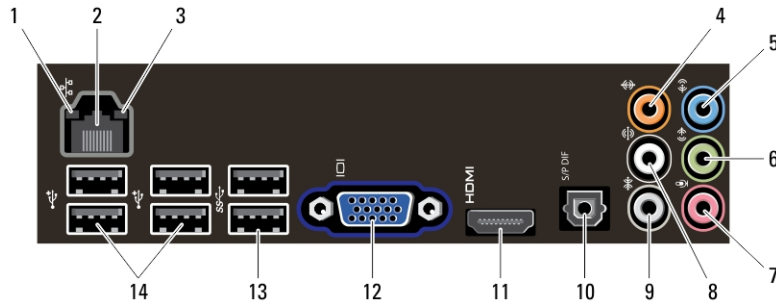


Figure 2. Back Panel

- 1. link integrity light
- 2. network adapter connector
- 3. network activity light
- 4. center/subwoofer connector
- 5. line-in connector
- 6. front L/R line-out connector
- 7. microphone connector
- 8. rear L/R speaker connector
- 9. side L/R surround connector
- 10. S/PDIF connector
- 11. HDMI connector
- 12. VGA connector
- 13. USB 3.0 connectors (2)
- 14. USB 2.0 connectors (4)

## Quick Setup

**WARNING:** Before you begin any of the procedures in this section, read the safety information that shipped with your computer. For additional best practices information, see [www.dell.com/regulatory\\_compliance](http://www.dell.com/regulatory_compliance).

**NOTE:** Some devices may not be included if you did not order them.

**NOTE:** Some cables may not be shipped with your computer.

1. Connect the network cable (optional).

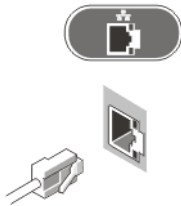
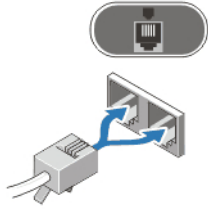


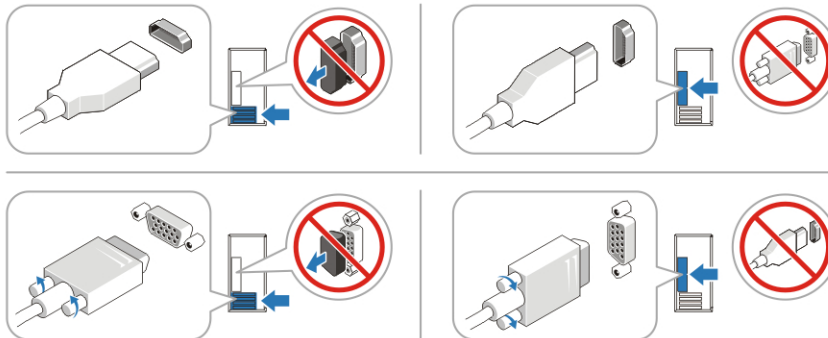
Figure 3. Network Connection

2. Connect the telephone cable (optional).



**Figure 4. Telephone Connection**

3. If you purchased the optional discrete graphics card, connect the display to the connector on the discrete graphics card. Otherwise, connect the display using either the integrated VGA or HDMI connector. Connect the monitor using only one of the following cables:



**Figure 5. VGA Connector And HDMI Connector**

4. Connect the USB keyboard or mouse (optional).



**Figure 6. USB Connection**

5. Connect the power cable(s).



**Figure 7. Connecting Power**

6. Press the power buttons on the monitor and the computer.

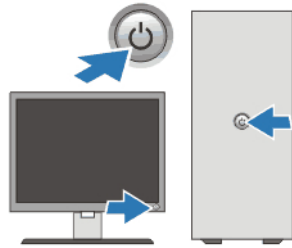


Figure 8. Turning On Power

## Specifications

**NOTE:** The following specifications are only those required by law to ship with your computer. For a complete and current listing of the specifications for your computer, go to [support.dell.com](http://support.dell.com).

<b>Power</b>	
Wattage	350 W/460 W
Voltage (see the safety information that shipped with your computer for important voltage–setting information)	100 V-127 V/200 V-240 V, 50 Hz/60 Hz, 8 A/4 A
Coin-cell battery	3 V CR2032 lithium coin cell
<b>Physical</b>	
Height	
without base	360.00 mm (14.17 inches)
with base	362.90 mm (14.29 inches)
Width	175.00 mm (6.89 inches)
Depth	445.00 mm (17.52 inches)
Weight	9.66 kg – 11.22 kg (21.30 lb – 24.74 lb)
<b>Environmental</b>	
Operating Temperature:	10 °C to 35 °C (50 °F to 95 °F)

## Information para NOM (únicamente para México)

Voltaje de alimentación	100 V CA – 127 V CA/ 200 V– 240 V CA
Frecuencia	50 Hz/60 Hz
Consumo eléctrico	8 A/4 A
Voltaje de salida	N/A
Intensidad de salida	N/A

## Finding More Information and Resources

See the safety and regulatory documents that shipped with your computer and the regulatory compliance website at [www.dell.com/regulatory\\_compliance](http://www.dell.com/regulatory_compliance) for more information on:

- Safety best practices
- Regulatory certification
- Ergonomics

See [www.dell.com](http://www.dell.com) for additional information on:

- Warranty
- Terms and Conditions (U.S. only)
- End User License Agreement

Additional information on your product is available at [support.dell.com/manuals](http://support.dell.com/manuals).

**Information in this publication is subject to change without notice.**

© 2012 Dell Inc. All rights reserved.

Reproduction of these materials in any manner whatsoever without the written permission of Dell Inc. is strictly forbidden.

Trademarks used in this text: Dell™, the DELL logo, Dell Precision™, Precision ON™, ExpressCharge™, Latitude™, Latitude ON™, OptiPlex™, Vostro™, and Wi-Fi Catcher™ are trademarks of Dell Inc. Intel®, Pentium®, Xeon®, Core™, Atom™, Centrino®, and Celeron® are registered trademarks or trademarks of Intel Corporation in the U.S. and other countries. AMD® is a registered trademark and AMD Opteron™, AMD Phenom™, AMD Sempron™, AMD Athlon™, ATI Radeon™, and ATI FirePro™ are trademarks of Advanced Micro Devices, Inc. Microsoft®, Windows®, MS-DOS®, Windows Vista®, the Windows Vista start button, and Office Outlook® are either trademarks or registered trademarks of Microsoft Corporation in the United States and/or other countries. Blu-ray Disc™ is a trademark owned by the Blu-ray Disc Association (BDA) and licensed for use on discs and players. The Bluetooth® word mark is a registered trademark and owned by the Bluetooth® SIG, Inc. and any use of such mark by Dell Inc. is under license. Wi-Fi® is a registered trademark of Wireless Ethernet Compatibility Alliance, Inc.

Other trademarks and trade names may be used in this publication to refer to either the entities claiming the marks and names or their products, Dell Inc. disclaims any proprietary interest in trademarks and trade names other than its own.