

Dell™ Mobile Broadband Card Utility User's Guide

The information below is provided by the supplier of the referenced software without independent verification by Dell and is subject to the [restrictions and disclaimers](#) noted below.

[Introduction](#)

[Quick Start](#)

[Using the Dell Mobile Broadband Card Utility](#)

[SIM Card Information](#)

[Frequently Asked Questions](#)

[Troubleshooting](#)

[Safety Information](#)

[Technical Specifications](#)

[Glossary](#)

[Regulatory](#)

Information in this document is subject to change without notice.

© 2007 Dell Inc. All rights reserved.

Trademarks and Service Marks

Microsoft® and Windows® are either registered trademarks or trademarks of Microsoft® Corporation in the United States and/or other countries.

Dell and the *DELL* logo are trademarks of Dell Inc.

The names of actual companies and products mentioned in this help file may be the trademarks of their respective owners.

Other trademarks and trade names may be used in this document to refer to either the entities claiming the marks and names or their products. Dell Inc. disclaims any proprietary interest in trademarks and trade names other than its own.

Restrictions and Disclaimers

The information contained in this document, including all instructions, cautions, and regulatory approvals and certifications, is provided by the supplier and has not been independently verified or tested by Dell. Dell cannot be responsible for damage caused as a result of either following or failing to follow these instructions.

All statements or claims regarding the properties, capabilities, speeds or qualifications of the part referenced in this document are made by the supplier and not by Dell. Dell specifically disclaims knowledge of the accuracy, completeness or substantiation for any such statements. All questions or comments relating to such statements or claims should be directed to the supplier.

Export Regulations

Customer acknowledges that these Products, which may include technology and software, are subject to the customs and export control laws and regulations of the United States ("U.S.") and may also be subject to the customs and export laws and regulations of the country in which the Products are manufactured and/or received. Customer agrees to abide by those laws and regulations. Further, under U.S. law, the Products may not be sold, leased or otherwise transferred to restricted end-users or to restricted countries. In addition, the Products may not be sold, leased or otherwise transferred to, or utilized by an end-user engaged in activities related to weapons of mass destruction, including without limitation, activities related to the design, development, production or use of nuclear weapons, materials, or facilities, missiles or the support of missile projects, and chemical or biological weapons.

Release date: March 2007

Introduction: Dell™ Mobile Broadband Card Utility User's Guide

● [Overview](#)

● [Features](#)

Overview

Congratulations on purchasing a Dell notebook with mobile broadband connectivity.

Mobile broadband provides high-speed connectivity via public carrier cellular networks. The Dell Mobile Broadband Card Utility is a family of broadband connectivity applications that give you the freedom to quickly download complex files and large email attachments, as well as access your mission-critical data and applications when and where you need them the most - from anywhere within your service carrier's coverage area.

Mobile broadband gives you the power to stay productive, responsive, and connected while on the go, right from your Dell notebook. In order to take advantage of the benefits that mobile broadband can offer, you must first activate service on your mobile broadband card on your chosen cellular provider's network. Dell makes it easy to activate service—if you haven't yet activated your card, [click here](#) for more information and instructions on how to get started.

Features

The Dell Mobile Broadband Card Utility includes the following features:

- Create and configure your mobile broadband connection profile
 - Log number of connections, connection duration, and amount of data sent and received (Note that usage data is for informational purposes only and cannot be used to verify usage data with your service provider)
 - SMS (Short Message Service) text messaging – send and receive short text messages to and from mobile phones (Check with your service provider for inclusion of this feature in your service plan)
 - Email capability – send and receive email and attachments using your preferred email client
 - Mobile Broadband Card diagnostics
 - GPS capability – to determine if your system supports GPS, [click here](#).
 - [Advanced features](#)
-

Please read all [restrictions and disclaimers](#).

[Top of Page](#)

[Back to Contents Page](#)

Quick Start: Dell™ Mobile Broadband Card Utility User's Guide

If the Dell Mobile Broadband Card Utility software was not pre-installed by Dell (generally the case if the Dell Wireless 5520 Mobile Broadband 3G HSDPA Mini-Card was purchased separately), then [click here](#) for instructions on how to install the Dell Mobile Broadband Card Utility software.

- [Step 1: Launching the Dell Mobile Broadband Card Utility](#)
- [Step 2: Activating the Dell Broadband Card](#)
- [Step 3: Connecting to the Network](#)



NOTE: Your Dell Mobile Broadband Card is pre-configured by Dell and ready to connect once the steps below are completed.

That's it! Once setup is completed, you can connect to the Internet immediately.

Step 1: Launching the Dell Mobile Broadband Card Utility

The Dell Mobile Broadband Card Utility can be launched from the Windows Start menu or the Windows system tray by following the directions below.

From the Windows **Start** menu, select **All Programs > Dell Wireless > Dell Mobile Broadband**.

From the Windows system tray, click  in the system tray as shown below:



[Top of Page](#)

Step 2: Activating the Dell Mobile Broadband Card

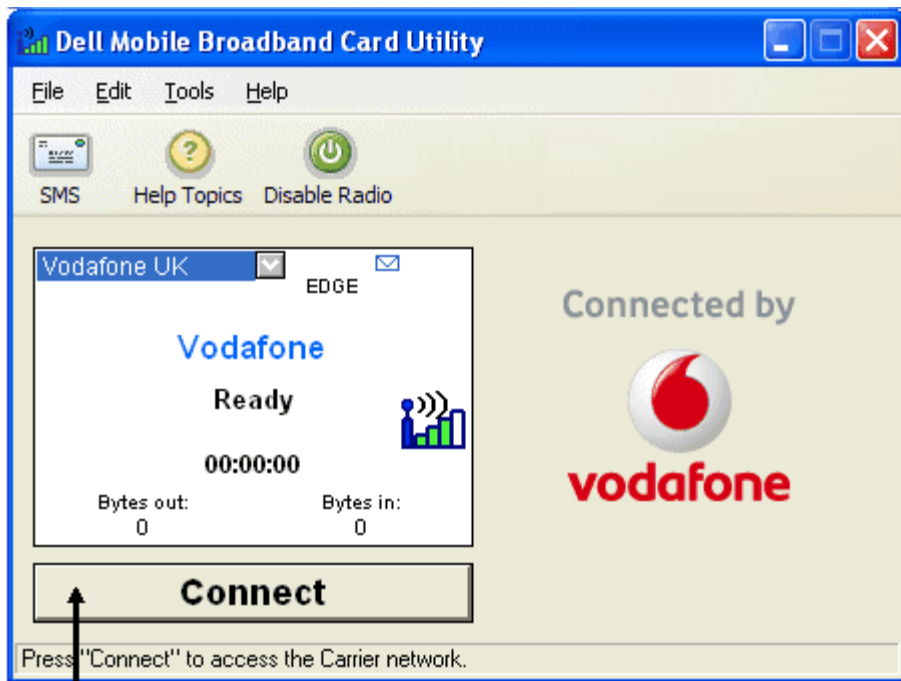
Before you can connect to the network with your Dell Mobile Broadband Card, you must have an activated SIM card. Check www.dell.com/activate to learn more about activating your service.

After you activate your card, you are ready to access the Mobile Broadband network with your mobile broadband card. For more information, follow the instructions in [Using the Dell Mobile Broadband Card Utility](#).


[Top of Page](#)

Step 3: Connecting to the Network

Connecting to the Internet is as simple as clicking the Connect button as seen below.



Connect button

 **NOTE:** Check with your service provider to ensure you are in a coverage area before connecting.

Once connected, the **Connect** button changes to **Disconnect**. Click the button to end your connection.

If your connection fails, see [Troubleshooting](#).

Please read all [restrictions and disclaimers](#).

[Top of Page](#)

[Back to Contents Page](#)

[Back to Contents Page](#)

Using the Dell™ Mobile Broadband Card Utility: Dell Mobile Broadband Card Utility User's Guide

The Dell Mobile Broadband Card Utility and your mobile broadband card allow you to easily connect to the wireless Internet from your notebook computer. It provides easy-to-use applications for creating connection profiles, sending and receiving SMS messages, and diagnosing connection problems.

[Getting Around the Utility](#)

[Connecting](#)

[SMS Text Messaging](#)

[Advanced Settings](#)

Please read all [restrictions and disclaimers](#).

[Back to Contents Page](#)

[Back to Contents Page](#)

SIM Card Information: Dell™ Mobile Broadband Card Utility User's Guide

A SIM card (Subscriber Identity Module card) is included with your Dell Mobile Broadband Card and installed in your notebook computer. This removable card is the chip used by your Dell Mobile Broadband Card to obtain information such as the mobile broadband phone number and address book as well as other information related to the subscriber. To activate your mobile broadband service and SIM card, [click here](#).

Please reference the product guide supplied with your Dell notebook for the location of your SIM card.



NOTE: The SIM card does not support hot swap. Ensure your notebook is powered down prior to installing or removing the card.

Please read all [restrictions and disclaimers](#).

[Back to Contents Page](#)

Frequently Asked Questions: Dell™ Mobile Broadband Card Utility User's Guide

- [Where can I use this product?](#)
 - [How can I tell if I have service?](#)
 - [I cannot connect to the Internet. What do I do?](#)
 - [Why does my mobile phone indicate that I have coverage in an area while my data device indicates no network?](#)
 - [Why are the signal strength bars on my phone and computer different when they are sitting next to each other?](#)
 - [I have an indication of good signal strength but I am unable to connect. Why?](#)
 - [How can I check the quality of my connection?](#)
 - [How do I find out what version of the software I'm using?](#)
 - [How do I find out what version of firmware my mobile broadband card is using?](#)
 - [Where can I get the drivers for this product?](#)
 - [How do I perform a self-diagnostic?](#)
 - [How do I determine if my system supports GPS?](#)
 - [How do I enable GPS?](#)
 - [How do I connect my GPS mapping software?](#)
 - [How do I find the COM port for my GPS mapping software?](#)
 - [How do I disable GPS?](#)
-

Question: Where can I use this product?

Answer: Anywhere there is 3G GPRS or UMTS service. Go to www.vodafone.com for a coverage map.

Question: How can I tell if I have service?

Answer: The signal strength status bar icon will indicate if there is coverage. The service indicators will indicate the service available. If there is no service the status display will display "No Service". You must have an active subscription plan from your service provider and must have activated the service.

Question: I cannot connect to the Internet. What do I do?

Answer: Check that you have correctly installed the Dell Mobile Broadband Card Utility software located on the CD that came with the product. You must have an active subscription plan from your service provider and must have activated the service. If your software is correctly installed and you have an activated service, perform a self-diagnostic to determine the problem. For detailed instructions on performing a self-diagnostic, see [Self-Diagnostics](#).

Question: Why does my mobile phone indicate that I have coverage in an area while my data device indicates no network?

Answer: You are probably in an area not covered by data coverage. Your mobile phone is a voice device and most voice carriers have roaming agreements that provide a large coverage area. This may not be the case for your data service. Check for data

coverage with your service provider at <http://www.vodafone.com>.

Question: Why are the signal strength bars on my phone and computer different when they are sitting next to each other?

Answer: Data coverage areas and phone coverage areas do not always coincide. You are probably in an area with weaker data coverage than cellphone coverage. Check for data coverage with your service provider.

Question: I have an indication of good signal strength but I am unable to connect. Why?

Answer: The Signal Strength bar displays the strength of the cellular signal. In order to attach to the network, you also need to have subscribed to the service. Check with your service provider to ensure your service is activated.

Question: How can I check the quality of my connection?

Answer: The Signal Strength bar, located on the Main Window, indicates the quality of the signal. If two or more bars are shaded, the signal strength is good. If fewer than two bars are shaded, the signal strength is weak, and it may be difficult to establish and maintain a network connection. Contact your service provider about coverage for weak signals.

Question: How do I find out what version of the software I'm using?

Answer: Software includes the Dell Mobile Broadband Card Utility and corresponding drivers. New versions of software will bundle this utility and drivers together. In the main window click on **Help** and select **About**. The software version, release date, and copyright information will be displayed. New versions can be obtained at <http://support.dell.com>.

Question: How do I find out what version of firmware my mobile broadband card is using?

Answer: Firmware is software that runs internally on the Dell Mobile Broadband Card. In the **Main** window, click on **File** and select **Properties**. The firmware version will be displayed.

Question: Where can I get the drivers for this product?

Answer: The drivers are integrated into the Dell Mobile Broadband Card Utility software. For updated drivers, go to <http://support.dell.com>.

Question: How can I perform a self-diagnostic?

Answer: See [Self-Diagnostics](#) for instructions on performing a self-diagnostic.

Question: How do I determine if my system supports GPS?

Answer: The Dell Mobile Broadband Card Utility determines whether your system supports GPS during installation.

Question: How do I enable GPS?

Answer: Do the following:

1. In the **Main** window, select **GPS Status** from the **Tools** menu, or click on the **GPS Status** button in the tool bar.
 2. In the **GPS Status** window, click **Start GPS**.
If the GPS position cannot be obtained within 5 minutes, a warning message appears: "Unable to obtain a GPS fix. Please make sure you have a clear view of the sky. Would you like to stop GPS?" Make sure the system has a clear view of the sky and click **Continue Searching**, or click **Stop**.
 3. Once location information appears in the GPS window, open the mapping software and configure the correct COM port. The GPS COM port can be found in the GPS Status window.
-

Question: How do I connect my GPS mapping software?

Answer: Enable GPS. In your GPS mapping program, connect to the COM port shown in the GPS Status window as described in the answer to the next question. Follow the directions in your GPS mapping program documentation.

Question: How do I find the COM port for my GPS mapping software?

Answer: In the GPS Status window, the GPS Port value displays the COM port that your GPS mapping software should use.

Question: How do I disable GPS?

Answer: In the Dell Broadband Card Utility main window, select **GPS Status** from the **Tools** menu or click on the **GPS Status** button in the tool bar. In the **GPS Status** window, click **Stop GPS**.

Please read all [restrictions and disclaimers](#).

[Top of Page](#)

[Back to Contents Page](#)

Troubleshooting: Dell™ Mobile Broadband Card Utility User's Guide

- [Common Problems and Solutions](#)
 - [About Self-Diagnostics](#)
 - [Running Self-Diagnostics](#)
 - [Diagnostic Error Messages and Resolutions](#)
 - [Getting Help](#)
-

Common Problems and Solutions

The following are some common problems and solutions.

I cannot install the software

- You may not have administrator privileges.
 1. Talk to your system administrator if applicable.
 2. Log onto your computer as an administrator, or create a user account with administrator privileges.

I don't have service

- Check that you have an active subscription plan from your service provider and that the service has been activated.
- You may be in an area not covered by data coverage. Your mobile phone is a voice device and most voice carriers have roaming agreements that provide a large coverage area. This may not be the case for your data service. Please check for data coverage with your service provider.

Dell Mobile Broadband Card Utility status is "No Card Detected"

- Make sure that no other software programs are open that may be using the Dell Mobile Broadband Card.

I cannot connect to the Internet

- Your software may be incorrectly installed. Check that you have correctly installed the Dell Mobile Broadband Card Utility software located on the CD that came with the product.
- You may not have an active subscription plan. Check that you have an active subscription plan from your service provider and have activated the service.
- You may be experiencing a service issue. Perform a self-diagnostic to determine the problem. For detailed instructions on performing a self-diagnostic, see [Self-Diagnostics](#).

I cannot access my Dell Mobile Broadband Card using other software

- Ensure the Dell Mobile Broadband Card Utility has exited by selecting **Exit** from the **File** menu.

I have an indication of good signal strength but I am unable to connect

- You may not have an active subscription plan. Check that you have an active subscription plan from your service provider.

When I run the Dell Mobile Broadband Card Utility software, the window "Searching for Network" is continuously displayed.

- You may be out of your service coverage area. Check for good signal strength or contact your service provider.

I cannot browse the Web

- You may not have an IP address. If you are certain that the user name, password, and APN are correct, check to see if you

are getting an IP address:

1. From the Start menu, select Run. In the Run window, type "Command" in the Open box and click OK.
 2. In the Command window, type "cd\" and press the Enter key to navigate to the root directory.
 3. Type "ipconfig" and press the Enter key. Your IP address should appear on the screen. If not, contact your service provider.
- Your server settings may be incorrect.
 1. In Internet Explorer, select Internet Options > Connections from the Tools menu.
 2. In Dial Up and Virtual Private Network Setting double-click on 3G Connection.
 3. Check the appropriate boxes if you are using a proxy server.
 - You may be experiencing DNS server problems
 1. From the Start menu, select Run. In the Run window, type "Command" in the Open box and click OK.
 2. At the c: prompt, type "PING www.dell.com".
 - Response: Unknown host www.dell.com - This usually indicates a faulty DNS. Call your service provider.
 - Response: Pinging www.dell.com with 32 bytes of data. This indicates the DNS is working properly even if you do not receive a reply.

No information appears in the status window when I have GPS enabled

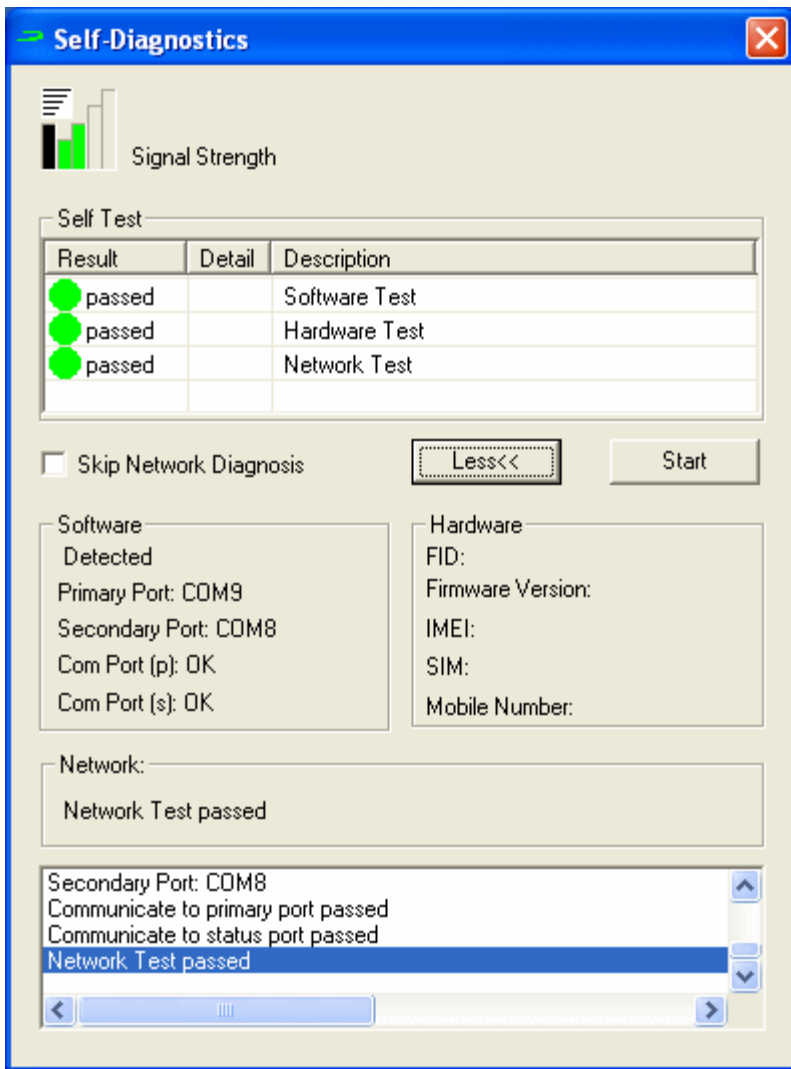
- The system must be outside or have a reasonably clear view of the sky. Try moving your notebook computer outside or near a window.
- GPS may not be enabled. To enable GPS:
 1. In the **Main** window, select **GPS Status** from the **Tools** menu, or click on the **GPS Status** button in the tool bar.
 2. In the **GPS Status** window, click **Start GPS**.
If the GPS position cannot be obtained within 5 minutes, a warning message appears: "Unable to obtain a GPS fix. Please make sure you have a clear view of the sky. Would you like to stop GPS?" Make sure the system has a clear view of the sky and click **Continue Searching**, or click **Stop**.
 3. Once location information appears in the GPS window, open the mapping software and configure the correct COM port. The GPS COM port can be found in the GPS Status window.

[Top of Page](#)

About Self-Diagnostics

Self-Diagnostics allows you to diagnose problems with the mobile broadband card. Some of the problems such as bad driver installation, poor network coverage, and unprovisioned Dell Mobile Broadband Card can be detected. Self-Diagnostics performs the following tests:

- Software Test verifies that your drivers are installed correctly.
- Hardware Test verifies the full functionality of the mobile broadband card.
- Network Test verifies that the network is online available.




Self-Diagnostics allows you to test your software, hardware, and the network. If you are having difficulty, run this program to help you isolate the problem.

[Top of Page](#)

Running Self-Diagnostics

To perform the self-diagnostics:

1. From the **Help** menu, select **Self-Diagnostics**. The Self-Diagnostics window appears.
 2. Click **More...** to expand the window and view more options.
 3. If you want to test the mobile broadband card without checking the network, select the **Skip Network Diagnostics** check box.
 4. Click **Start** to begin the test.
As the test proceeds, the results for each test category are displayed in the Self Test box. If you chose to test the network, detailed network status information is displayed in the Network box at the bottom of the window. If the signal strength changes during the test, a dialog box appears asking if you want to retest.
-  **Note:** Signal strength may change the outcome of the test if your problem was caused by a weak signal.
5. Click **OK** to rerun the test.
If a test category passed, "Passed" appears in green text in the Result column. If a test fails, "Fails" appears in red. Details of each test category—Software, Hardware, and Network—are displayed in the window.
 6. To stop the test, click **Stop**.
 7. When you have finished testing, close the window.

Diagnostic Error Messages and Resolutions

Error	Description
102	The connection has failed. If you are trying to establish a connection by wireless modem, please activate your SIM.
103, 106, 107, 111, 112, 113, 131, 132, 133, 137, 149	If you are trying to establish a connection by wireless modem, the profile may not be correctly set. For more information on correct profile settings, contact your service provider or consult the provider's documentation.
127	If you are trying to establish a connection by wireless modem, the profile's APN setting may not be correctly set. For more information on correct profile settings, contact your service provider or consult the provider's documentation.
129	If you are trying to establish a connection by wireless modem, the profile's username or password may not be correctly set. For more information on correct profile settings, contact your service provider or consult the provider's documentation.
134, 139	If you are trying to establish a connection by wireless modem, the provider's network is temporarily unavailable. Please try again later.
619	If you are trying to establish a connection by wireless modem, the profile's login information, APN, or quality of service settings may not be correctly set. For more information on correct profile settings, contact your service provider or consult the provider's documentation. If you are using a wireless modem with a SIM, an incompatible SIM may be inserted. Verify that the SIM in the wireless modem is from your service provider.
712	If you are trying to establish a connection by wireless modem, the profile's quality of service settings may not be correctly set. For more information on correct profile settings, contact your service provider or consult the provider's documentation.
720	If you are trying to establish a connection by wireless modem, the profile's static IP settings may not be correctly set. For more information on correct profile settings, contact your service provider or consult the provider's documentation.
777	If you are trying to establish a connection by wireless modem, the profile's PDP setting may not be correctly set. For more information on correct profile settings, contact your service provider or consult the provider's documentation.

Getting Help

If the troubleshooting procedures in this document do not resolve the problem, please contact your carrier or visit Dell Technical Support as follows:

Activation	Check http://www.dell.com/activate to learn more about activating your service.
Connection Support	For billing and account support for your mobile broadband service, either check Vodafone/SFR online at http://www.support.vodafone.com/dell or phone the number at the top of your Vodafone/SFR bill. You may be asked to provide some information on your mobile broadband card. For instructions on how to access this information, click here .
Software/Hardware Support	For Dell Mobile Broadband Card and Utility support, check http://support.dell.com for the latest updates and information.

Please read all [restrictions and disclaimers](#).

[Top of Page](#)

[Back to Contents Page](#)

Safety Information: Dell™ Mobile Broadband Card Utility User's Guide

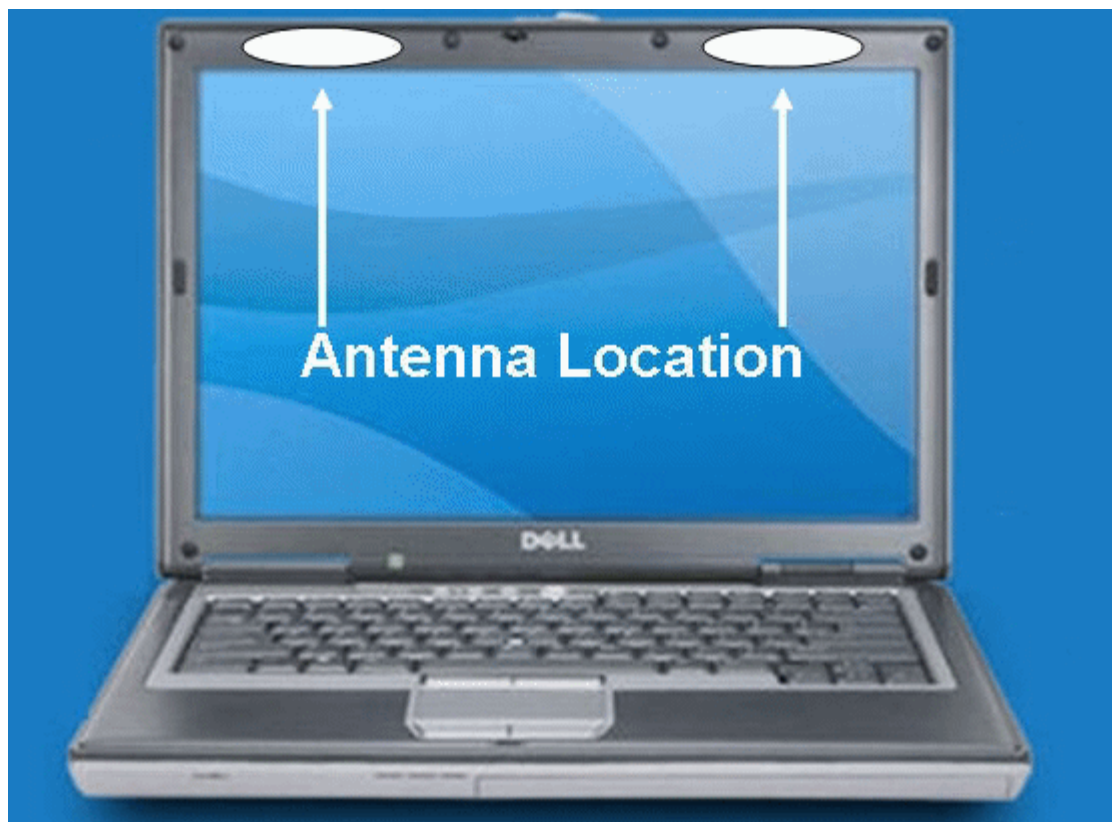
- [SAR Information](#)
- [Safety Hazards](#)

SAR Information

FCC Radiation Exposure Statement

The radiated output power of the Dell Wireless Mobile Broadband device is far below the FCC radio frequency exposure limits. Nevertheless, the Dell Wireless Mobile Broadband devices should be used in such a manner that the potential for human contact during normal operation is minimized. To avoid the possibility of exceeding the FCC radio frequency exposure limits, you should keep a distance of at least 20 cm between you (or any other person in the vicinity) and the antenna that is built into the notebook.

This device has been evaluated for and shown compliant with the FCC RF exposure limits under mobile exposure conditions (antennas are at least 20 cm from a person's body) when installed in Dell regular notebooks. This device when installed in Dell tablet notebooks has also been evaluated for and shown compliant with the FCC RF exposure limits under portable exposure conditions (antennas are within 20 cm of a person's body). Details of the authorized configurations can be found at <http://www.fcc.gov/oet/ea/> by entering the FCC ID number on the device.



CONSUMER INFORMATION ABOUT RADIO FREQUENCY EMISSIONS

Your wireless solution, which contains a radio transmitter and receiver, emits radio frequency energy during use. The following consumer information addresses commonly asked questions about the health effects of wireless devices.

Are Wireless Devices Safe?

Scientific research on the subject of wireless devices and radio frequency ("RF") energy has been conducted worldwide for many years, and continues. In the United States, the Food and Drug Administration ("FDA") and the Federal Communications Commission ("FCC") set policies and procedures for wireless devices. The FDA and the FCC have created a joint website, "Cell

Phone Facts - Consumer Information on Wireless Devices," which states that "[t]he available scientific evidence does not show that any health problems are associated with using wireless devices," while noting that "[t]here is no proof, however, that wireless devices are absolutely safe." You can access the joint FDA/FCC website at <http://www.fda.gov>. You can also contact the FDA toll-free at (888) 463-6332 or (888) INFO-FDA. In June 2000, the FDA entered into a cooperative research and development agreement through which additional scientific research will be conducted. The FCC issued its own website publication stating that "[t]here is no scientific evidence that proves that wireless device usage can lead to cancer or a variety of other problems, including headaches, dizziness or memory loss." This publication is available at <http://www.fcc.gov/cgb/consumerfacts/mobilephone.html> or through the FCC at (888) 225-5322 or (888) CALL-FCC.

What Does "SAR" Mean?

In 1996, the FCC, working with the FDA, the U.S. Environmental Protection Agency, and other agencies, established RF exposure safety guidelines for wireless devices in the United States. Before a wireless device is available for sale to the public, it must be tested by the manufacturer and certified to the FCC that it does not exceed limits established by the FCC. One of these limits is expressed as a Specific Absorption Rate, or "SAR". SAR is a measure of the rate of absorption of RF energy in the body. Tests for SAR are conducted with the device transmitting at its highest power level in all tested frequency bands. Since 1996, the FCC has required that the SAR of handheld wireless devices not exceed 1.6 watts per kilogram, averaged over one gram of tissue. Although the SAR is determined at the highest power level, the actual SAR value of a wireless device while operating can be less than the reported SAR value. This is because the SAR value may vary from call to call, depending on factors such as proximity to a cell site and the proximity of the device to the body while in use. For more information about SARs, see the FCC's OET Bulletins 56 and 65 at http://www.fcc.gov/Bureaus/Engineering_Technology/Documents/bulletins and <http://www.fcc.gov/oet/fccid>, or visit the Cellular Telecommunications Industry Association website at http://www.ctia.org/wireless_consumers/health_and_safety/index.cfm/AID/152. You may also wish to contact the manufacturer of your device.

Do Wireless Devices Pose Any Special Risks to Children?

The FDA/FCC website states that "[t]he scientific evidence does not show a danger to users of wireless communication devices including children." The FDA/FCC website further states that "[s]ome groups sponsored by other national governments have advised that children be discouraged from using wireless devices at all. For example, the government in the United Kingdom ["UK"] distributed leaflets containing such a recommendation in December 2000. [The UK] noted that no evidence exists that using a wireless device causes brain tumors or other ill effects. [The UK's] recommendation to limit wireless device use by children was strictly precautionary; it was not based on scientific evidence that any health hazard exists." A copy of the UK's leaflet is available at <http://www.dh.gov.uk> (search "mobile"), or you can write to: NRPB, Chilton, Didcot, Oxon OX11 0RQ, United Kingdom. Copies of UK's annual reports on mobile devices and RF are available online at <http://www.iegmp.org.uk> and <http://www.hpa.org.uk/radiation/> (search "mobile"). Parents who wish to reduce their children's RF exposure may choose to restrict their children's wireless device use.

Where Can I Obtain Further Information?

For further information, see the following additional resources (websites current as of January 2005)

U.S. Food and Drug Administration
FDA Consumer magazine
November-December 2000
Telephone: (888) INFO-FDA
http://www.fda.gov/fdac/features/2000/600_phone.html

U.S. Federal Communications Commission
445 12th St. S.W.
Washington, D.C. 20554
Telephone: (888) 225-5322
<http://www.fcc.gov/oet/rfsafety>

Independent Expert Group on Mobile Devices
<http://www.iegmp.org.uk>

Royal Society of Canada
Expert Panel on Potential Health Risks of Radiofrequency Fields from Wireless Telecommunications Devices
283 Sparks Street
Ottawa, Ontario K1R 7X9
Canada
Telephone: (613) 991-6990
http://www.rsc.ca/index.php?page=expert_panels_rf_id=1&page_id=120

World Health Organization

Avenue Appia 20
1211 Geneva 27
Switzerland
Telephone: 011 41 22 791 21 11
<http://www.who.int/mediacentre/factsheets/fs193/en/>

International Commission on Non-Ionizing Radiation Protection
c/o Bundesamt für Strahlenschutz
Ingolstaedter Landstr.1
85764 Oberschleissheim
Germany
Telephone: 011 49 1888 333 2156
<http://www.icnirp.de>

American National Standards Institute
1819 L Street, N.W., 6th Floor
Washington, D.C. 20036
(202) 293-8020
<http://www.ansi.org>

National Council on Radiation Protection and Measurements
7910 Woodmont Avenue, Suite 800
Bethesda, MD 20814-3095
Telephone: (301) 657-2652
<http://www.ncrponline.org>

Engineering in Medicine and Biology Society, Committee on Man and Radiation (COMAR), of the Institute of Electrical and Electronics Engineers
<http://ewh.ieee.org/soc/embs/comar/>

[Top of Page](#)

Safety Hazards

Do not operate the mobile broadband card in an environment that may be susceptible to radio interference resulting in danger specifically;

- Areas where prohibited by the law
 - Follow any special rules and regulations and obey all signs and notices. Always turn off the mobile broadband card and power down the card when instructed to do so, or when you suspect that it may cause interference or danger.
- Where explosive atmospheres may be present
 - Do not operate your mobile broadband card in any area where a potentially explosive atmosphere may exist. Sparks in such areas could cause an explosion or fire resulting in bodily injury or even death. Be aware and comply with all signs and instructions.
 - Users are advised not to operate the mobile broadband card while at a refueling point or service station. Users are reminded to observe restrictions on the use of radio equipment in fuel depots (fuel storage and distribution areas), chemical plants or where blasting operations are in progress.
 - Areas with a potentially explosive atmosphere are often but not always clearly marked. Potential locations can include gas stations, below deck on boats, chemical transfer or storage facilities, vehicles using liquefied petroleum gas (such as propane or butane), areas where the air contains chemicals or particles, such as grain, dust or metal powders, and any other area where you would normally be advised to turn off your vehicle engine.
- Near Medical and life support equipment
 - Do not operate your mobile broadband card in any area where medical equipment, life support equipment, or near any equipment that may be susceptible to any form of radio interference. In such areas, the mobile broadband card must be turned off. The mobile broadband card may transmit signals that could interfere with this equipment.
- On an aircraft, either on the ground or airborne
 - In addition to FAA requirements, many airline regulations state that you must suspend wireless operations before boarding an airplane. Please ensure that the mobile broadband card is turned off as described in [Disable Dell Mobile Broadband Card](#) before boarding aircraft in order to comply with these regulations. The mobile broadband card can transmit signals that could interfere with various onboard systems and controls.

- While operating a vehicle
 - The driver or operator of any vehicle should not operate a wireless data device while in control of a vehicle. Doing so will detract from the driver or operator's control and operation of that vehicle. In some countries, operating such communications devices while in control of a vehicle is an offence.
- Electrostatic Discharge (ESD)
 - Electrical and electronic devices are sensitive to electrostatic discharge (ESD). Software will attempt to re-initialize a connection should a substantial electrostatic discharge cause the device to reset. If the software is not operational after an ESD occurrence, then restart the modem software application.
 - Inserting and removing the SIM card—precautions against electrostatic discharge (ESD). Do not touch the SIM card connectors. As a precaution, always make sure that the data card is already in your hand before you insert or remove the SIM card.



NOTE: The Dell Mobile Broadband Card and SIM card do not support hot swap. Ensure the system is powered down prior to installing or removing the devices.


Please read all [restrictions and disclaimers](#).

[Top of Page](#)

[Back to Contents Page](#)

Technical Specifications: Dell™ Mobile Broadband Card Utility User's Guide

This section outlines the technical and environmental specifications of your mobile broadband card.

Name:	Dell Wireless 5520 Mobile Broadband 3G HSDPA Mini-Card
Model Number:	Dell Mobile Broadband 5520 Minicard
Approvals:	FCC parts 2, 15, 22 & 24; CE; GSM Phase 2+; Microsoft WHQL; R&TTE directive 1999/5/EC (health, safety, EMC, spectrum); GCF & IOT compliant, 
Dimensions:	Height: 51mm, Width: 30mm, Depth: 4.75mm
Weight:	12 grams
Technology:	HSDPA/UMTS/EDGE/GPRS
Band Designation:	GPRS/EDGE: 850/900/1800/1900 MHz, UMTS/HSDPA: 2100 MHz
Power Output/Transmit Power:	GPRS: Power Class 4 (850/900 MHz), Power Class 1 (1800/1900 MHz) EDGE: Power Class E2 (850/900/1800/1900 MHz) UMTS/HSDPA: Power Class 3 (2100 MHz)

Please read all [restrictions and disclaimers](#).

Glossary: Dell™ Mobile Broadband Card Utility User's Guide

APN

Access Point Name. Provides routing information for GPRS. The APN consists of two parts; the Network ID, which identifies the external service requested by a user of the GPRS service, and the Operator ID, which specifies routing information.

bps

Bits per second. Rate of data flow.

Broadband

High-capacity high-speed, transmission channel with a wider bandwidth than conventional copper telephone lines. Broadband channels can carry video, voice, and data simultaneously.

CDMA

Code Division Multiple Access. A digital cellular technology using spread-spectrum techniques that is the common platform for 3G technologies.

CHAP

Challenge Handshake Authentication Protocol. A method of user authentication that uses random values.

EDGE

Enhanced Data GSM Environment OR Enhanced Data for Global Evolution. EDGE is an enhanced version of GPRS that enables the delivery of multimedia and other broadband applications to mobile devices. It is designed to deliver data downloads at rates up to 237kbps and is considered an evolutionary step to 3G/UMTS.

Firewall

A hardware or software boundary that protects a network or single notebook from unwanted outside traffic.

GPRS

General Packet Radio Service. GPRS is a packet-based broadband service with download speeds up to 86kbps. GPRS is considered an evolutionary step to more advanced technologies such as EDGE and WCDMA.

GPS

Global Positioning System. A satellite-based navigation system that indicates your current position, including latitude, longitude, and altitude.

HSDPA

High Speed Downlink Packet Access. HSDPA is an enhanced version of WCDMA that supports broadband connections with download speeds up to 3.6 Mbps. This enhanced 3G technology enables the download of high-bandwidth multimedia files, high resolution graphics, and other complex files, and viewing email attachments at broadband-like speeds.

ISP

Internet Service Provider. Also referred to as the service carrier, an ISP provides Internet connection service.

IP

Internet Protocol. The mechanism by which packets are routed between computers on a network.

Kbps

Kilobits (1024 bits) per second – rate of data flow.

LAN

Local Area Network. A data network confined to limited area with moderate to high data rates.

Mbps

Megabits (1,048,576 bits) per second - rate of data flow

NDIS

Network Driver Interface Specification. A Windows device driver interface that enables support for multiple network protocols.

NMEA

National Marine Electronics Association. A data specification for communication between marine electronics using GPS receivers.

PAP

Password Authentication Protocol. A method of user authentication using user names and passwords.

PIN Code

Personal Identity Number. A code that is linked to your SIM card for security. This four-digit code gives you access to the SIM card and allows you to access your service provider's network.

PPP

Point-to-Point Protocol. A method of connecting a computer to the Internet.

Proxy

A firewall mechanism that replaces the IP address of a host on the internal (protected) network with its own IP address for all traffic passing through it.

PUK Code

Pin Unlock Code. PUK is the code required to unlock a GSM SIM card that has disabled itself after an incorrect PIN code was entered three times in a row. If an incorrect PUK code is entered 5 to 10 times, the SIM card will permanently block (disable) itself.

SMS

Short Messaging Service. Short text messages of no more than 160 characters sent and received by broadband devices.

TCP/IP

Transmission Control Protocol/Internet Protocol. A protocol for communicating over the Internet.

UMTS

Universal Mobile Telecommunications System. A third generation (3G) mobile communications technology that offers peak data transmission speeds of up to 2 megabits per second (Mbps). UMTS uses WCDMA technology, and the two terms are often used interchangeably with each other.

VPN

Virtual Private Network. A way to communicate through a dedicated server securely to a corporate network over the Internet.

WAN

Wide Area Network. A network which uses common carrier-provided lines. Contrasts with LAN.

WCDMA

Wideband Code Division Multiple Access. Based on the GSM technology evolution roadmap, WCDMA supports upload and download speeds up to 384kbps.

WINS

Windows Internet Naming Service. A system that determines the IP address associated with a particular network computer.

WWAN

Wireless Wide Area Network. A communications technology that utilizes digital mobile phone systems to access data from any location in the range of a cell tower that is connected to a data-enabled network.

WWAN Device

Wireless Phone and cable or 3G UMTS PC Card.

Please read all [restrictions and disclaimers](#).

[Top of Page](#)

[Back to Contents Page](#)

Regulatory: Dell™ Mobile Broadband Card Utility User's Guide

- [Operational Information](#)
 - [Regulatory Information](#)
 - [Radio Approvals](#)
-

Operational Information

Wireless Interoperability

The Dell Wireless Mobile Broadband products are designed to be interoperable with the specific wireless service providers and their roaming partners. Wireless Mobile Broadband products are based on CDMA {Code Division Multiple Access} or GSM {Group Special Mobile} radio technologies that apply to the applicable standards.

FCC Radiation Exposure Statement

The radiated output power of the Dell Wireless Mobile Broadband device is far below the FCC radio frequency exposure limits. Nevertheless, the Dell Wireless Mobile Broadband devices should be used in such a manner that the potential for human contact during normal operation is minimized. To avoid the possibility of exceeding the FCC radio frequency exposure limits, you should keep a distance of at least 20 cm between you (or any other person in the vicinity) and the antenna that is built into the notebook. To determine the location of the antenna within your portable computer, check the information posted on the general Dell support site at <http://support.dell.com>. This 20 cm separation guideline does not apply to the device installed in Dell tablet notebooks.

This device has been evaluated for and shown compliant with the FCC RF exposure limits under mobile exposure conditions (antennas are at least 20 cm from a person's body) when installed in Dell regular notebooks. This device when installed in Dell tablet notebooks has also been evaluated for and shown compliant with the FCC RF exposure limits under portable exposure conditions (antennas are within 20 cm of a person's body). Details of the authorized configurations can be found at <http://www.fcc.gov/oet/ea/> by entering the FCC ID number on the device. For more information on this type of exposure or to view the location of the antenna within your portable computer, see [SAR Information](#).

Regulatory Information

The Dell Wireless Mobile Broadband network device must be installed and used in strict accordance with the manufacturer's instructions as described in the user documentation that comes with the product. Dell Inc is not responsible for any radio or television interference caused by unauthorized modification of the devices included with this Dell Wireless Mobile Broadband, or the substitution or attachment of connecting cables and equipment other than that specified by Dell Inc. The correction of interference caused by such unauthorized modification, substitution or attachment is the responsibility of the user. Dell Inc and its authorized resellers or distributors are not liable for any damage or violation of government regulations that may arise from the user failing to comply with these guidelines.

European Union, EU Declaration of Conformity

European Union, R&TTE Compliance Statement

Hereby, Dell Inc. declares that this Dell Wireless Device is in compliance with the essential requirements and other relevant provisions of Directive 1999/5/EC.

Европейски съюз, Декларация за съответствие с Директивата за радиосъоръжения и крайни далекосъобщителни устройства (R&TTE)
С настоящото Dell Inc. декларира, че това безжично устройство на Dell™ отговаря

на основните изисквания и другите съответни условия на Директива 1999/5/EC.

Evropská unie, prohlášení o shodě R&TTE

Společnost Dell Inc. tímto prohlašuje, že toto bezdrátové zařízení Dell je v souladu se základními požadavky a dalšími příslušnými ustanoveními směrnice 1999/5/ES.

EU-overensstemmelseserklæring, R&TTE

Hermed erklærer Dell Inc., at denne trådløse Dell-enhed er i overensstemmelse med de væsentligste krav og andre relevante bestemmelser i EU-direktivet 1999/5.

Europese unie, verklaring van naleving van de R&TTE-richtlijn

Hierbij verklaart Dell Inc. dat dit draadloze apparaat van Dell voldoet aan de essentiële vereisten en andere relevante bepalingen van Richtlijn 1999/5/EC.

Euroopa Liit, direktiivi R&TTE nõuetele vastavuse tunnistus

Dell Inc. kinnitab käesolevaga, et Dell Wireless Device vastab direktiivi 1999/5/EÜ olulistele nõuetele ja asjakohastele sätetele.

Euroopan unioni, RTTE-direktiivin vaatimustenmukaisuusselitys

Dell Inc. takaa täten, että tämä Dellin langaton laite täyttää direktiivin 1999/5/EY olennaiset vaatimukset ja muut asiaankuuluvat säädökset.

Déclaration de conformité R&TTE, Union Européenne

Par la présente, Dell Inc. déclare que ce Périphérique sans fil Dell est conforme aux exigences essentielles et aux autres provisions applicables de la Directive 1999/5/EC.

Europäische Union, R&TTE-Einhaltungserklärung

Hiermit bestätigt die Dell Inc., dass dieses Wireless-Gerät von Dell in Übereinstimmung mit den grundlegenden Anforderungen und anderen relevanten Bestimmungen der 1999/5/EC-Richtlinie steht.

Ευρωπαϊκή Ένωση, Δήλωση Συμμόρφωσης R&TTE

Δια του παρόντος, η Dell Inc. δηλώνει ότι αυτή η ασύρματη συσκευή της Dell συμμορφώνεται με τις βασικές απαιτήσεις και όλους τους σχετικούς όρους της Οδηγίας 1999/5/ΕΚ.

Európai Unió, megfeleléségi nyilatkozat a rádióberendezésekről és távközlő végberendezésekről szóló (R&TTE) irányelvvel

A Dell Inc. ezúton kijelenti, hogy a Dell vezeték nélküli készülék megfelel az 1999/5/EK direktíva alapvető követelményeinek és egyéb lényeges rendelkezéseinek.

Unione Europea, Dichiarazione di conformità R&TTE

Con la presente, Dell Inc. dichiara che questa periferica senza fili Dell è conforme ai requisiti essenziali e ad altri provvedimenti importanti della Direttiva 1999/5/CE.

Paziņojums par atbilstību Eiropas Savienības Radioiekārtu un telekomunikāciju iekārtu Direktīvai

Līdz ar to Dell Inc. paziņo, ka šī Dell bezvadu ierīce atbilst Direktīvā 1999/5/EK noteiktajām pamatprasībām un citiem tās atbilstošajiem noteikumiem.

Europos Sąjunga, pareiškimas apie radijo ryšio įrenginių ir telekomunikacijų galinių įrenginių (R&TTE) direktyvos atitikimą

Šiuo kompanija Dell Inc. pareiškia, kad šis Dell bevielis įrenginys atitinka direktyvos 1999/5/EB esminius reikalavimus ir kitas atitinkamas nuostatas.

Unjoni Ewropea, R&TTE Dikjarazzjoni tal-Konformità

Hawnhekk, Dell Inc., tiddikjara li dan id-Dell Wireless Device hu konformi mal-hliġġiet essenzjali u provvedimenti rilevanti oħrajn ta' Direttiva 1999/5/KE.

Unia Europejska, deklaracja zgodności z dyrektywą 1999/5/WE

Niniejszym firma Dell Inc. oświadcza, że to urządzenie bezprzewodowe firmy Dell spełnia zasadnicze wymogi oraz inne odnośnie przepisy dyrektywy 1999/5/WE.

União Europeia, Declaração de conformidade da R&TTE

Pelo presente, a Dell Inc. declara que este Dispositivo Sem Fios Dell está em conformidade com os requisitos essenciais e outras provisões relevantes da Directiva 1999/5/EC.

Uniunea Europeană, Declarație de Conformitate R&TTE

Dell declară prin prezenta, că acest dispozitiv fără fir Dell™ respectă cerințele esențiale, precum și alte dispoziții relevante ale Directivei 1999/5/EC.

Európska únia, vyhlásenie o zhode podľa R&TTE

Spoločnosť Dell Inc. týmto vyhlasuje, že toto bezdrôtové zariadenie Dell spĺňa základné požiadavky a iné príslušné ustanovenia smernice 1999/5/ES.

Evropska unija, izjava o ustreznosti radijske in telekomunikacijske terminalske opreme

Podjetje Dell Inc. izjavlja, da je ta brezžična naprava Dell v skladu z glavnimi zahtevami in drugimi pomembnimi določbami Direktive 1999/5/ES.

Unión Europea, Declaración de conformidad con R&TTE

Por el presente, Dell Inc. declara que este Dispositivo inalámbrico Dell cumple con los requisitos esenciales y otras provisiones relevantes de la Directiva 1999/5/EC.

EU, meddelande om överensstämmelse med R&TTE-direktivet

Dell Inc. deklarerar härmed att denna trådlösa Dell-enhet överensstämmer med de viktiga kraven och andra relevanta bestämmelser i direktivet 1999/5/EC.

Avrupa Birliđi, R&TTE Uygunluk Bildirimi

Burada, Dell Inc. bu Dell Kablosuz Aygıtının Directive 1999/5/EC kararının esas şartları ve diđer ilgili hükümleri ile uyumlu olduğunu beyan eder.



Federal Communications Commission Notice (FCC -- United States)

Electronic devices, including computers and wireless mobile broadband cards, generate RF energy incidental to their intended function and are therefore subject to FCC rules and regulations. This equipment has been tested to, and found to be within the acceptable limits for a Class B digital device, pursuant to part 15 of the FCC Rules. These limits are designed to provide reasonable protection against harmful interference when the equipment is operated in a residential environment. This equipment generates radio frequency energy and is designed for use in accordance with the manufacturer's user manual. However, there is no guarantee that interference will not occur in any particular installation. If this equipment causes harmful interference to radio or television reception, which can be determined by turning the equipment off and on, you are encouraged to try to correct the interference by one or more of the following measures:

- Reorient or relocate the receiving antenna
- Increase the separation between the equipment and the receiver
- Connect the equipment into an outlet on a circuit different from that to which the receiver is connected
- Consult the dealer or an experienced radio/television technician for help

This device complies with Part 15 of the Federal Communications Commission (FCC) Rules. Operation is subject to the following two conditions:

1. This device may not cause harmful interference.
2. This device must accept any interference received, including interference that may cause undesired operation.

WARNING: DO NOT ATTEMPT TO SERVICE THE WIRELESS COMMUNICATION DEVICE YOURSELF. SUCH ACTION MAY VOID THE WARRANTY. THE MOBILE BROADBAND CARD IS OEM FACTORY TUNED. NO CUSTOMER CALIBRATION OR TUNING IS REQUIRED. CONTACT DELL INC. TECHNICAL SUPPORT FOR INFORMATION ABOUT SERVICING YOUR WIRELESS COMMUNICATION DEVICE.

FCC CAUTION: Any changes or modification not expressly approved by the party responsible for compliance could void the user's authority to operate this equipment.

MODIFICATIONS: The FCC requires that you be notified that any changes or modifications made to this device that are not expressly approved by Dell Inc. may void your authority to operate the equipment.

Radio Approvals

It is important to ensure that you only use your radio device in countries where the device is approved for use. To determine whether you are allowed to use your wireless network device in a specific country, check to see if the radio type number that is printed on the identification label of your device or listed on the radio approval list posted on the general Dell support site at <http://support.dell.com>.

Please read all [restrictions and disclaimers](#).

[Top of Page](#)

[Back to Contents Page](#)

Advanced Settings: Dell™ Mobile Broadband Card Utility User's Guide

- [Introduction](#)
 - [Disable Dell Mobile Broadband Card](#)
 - [VPN](#)
 - [Managing Profiles](#)
 - [Using GPS](#)
 - [Configuration](#)
 - [Additional Features](#)
-

Introduction


The Dell Mobile Broadband Card Utility offers you the ability to enable or disable your mobile broadband card, set up a Virtual Private Network ([VPN](#)) for your mobile broadband connection, configure different connection profiles, and much more.

 **NOTE:** Ensure you are familiar with the functions of these settings prior to changing them.

[Top of Page](#)

Disable Dell Mobile Broadband Card

To disable the Dell Mobile Broadband Card, select **Disable Radio** from the **File** menu. To enable the card, select **Enable Radio Off** from the **File** menu.

 **NOTE:** You must disable the Dell Mobile Broadband Card to comply with safety regulations before boarding a plane. For more information, see [Safety Information](#).


[Top of Page](#)

VPN

For a description of VPN settings, see [Profile Settings](#).

To configure a VPN:


1. In the **Main** window, select **Profile Manager** from the **Edit** menu.
2. Click the **VPN** tab.
3. Configure the settings as required for your VPN.
4. Click **OK**.

 **NOTE:** VPN configurations are not supported when the Dell Mobile Broadband Card is enabled for Auto-Connect at Startup.

Managing Profiles

Profiles allow you to easily maintain your connection settings. For information on using profiles, see [Managing Profiles](#).

Using GPS

 **NOTE:** GPS is available only on supported systems. The Dell Mobile Broadband Card Utility determines whether your system is supported during installation.

The Global Positioning System (GPS) is a satellite-based navigation system that indicates your current position, including latitude, longitude, and altitude.



Item	Description
Status	Current GPS status—Idle, Searching, or Acquired.
GPS Port	The COM port that the NMEA data can be read from. Regardless of GPS operation, the NMEA COM port will be available and can be opened; however, if GPS is disabled no NMEA data will be sent.
Latitude	Latitude of the last GPS acquisition.
Longitude	Longitude of the last GPS acquisition.
Altitude	Altitude of the last GPS acquisition.

Speed	Velocity as of the last GPS acquisition.
Direction	Bearing as of the last GPS acquisition.
Satellites	Number of satellites currently acquired.
Uncertainty	Your GPS position may “drift” slightly, which can cause a small inaccuracy in the Speed reading but a potentially larger variance in the Direction reading. This number indicates the possible variance between the Direction value and your actual bearing.
Date of Last Fix	Network date of the last GPS acquisition.
Time of Last Fix	Network time of the last GPS acquisition.

To use GPS:

1. In the **Main** window, select **GPS Status** from the **Tools** menu, or click the **GPS Status** button in the tool bar.
2. In the **GPS Status** window, click **Start GPS**.
If the GPS position cannot be obtained within 5 minutes, a warning message appears: “Unable to obtain a GPS fix. Please make sure you have a clear view of the sky. Would you like to stop GPS?” Make sure the system has a clear view of the sky and click **Continue Searching**, or click **Stop**.
3. Once location information appears in the GPS window, open the mapping software and configure the correct COM port. The GPS COM port can be found in the GPS Status window as shown above.

To disable GPS:

 **NOTE:** Disabling the Mobile Broadband Card will not disable GPS. Follow the instructions below to stop GPS operation.

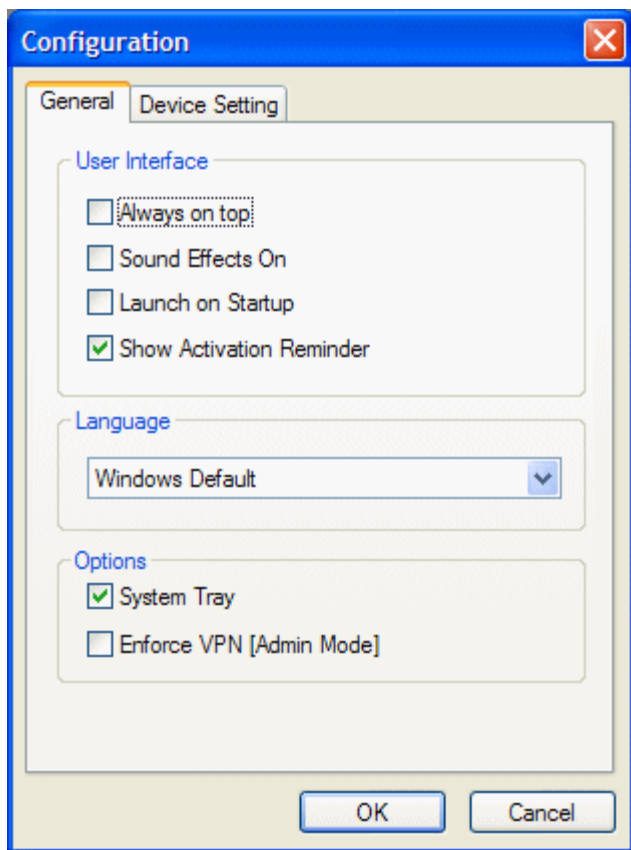
1. In the **Main** window, select **GPS Status** from the **Tools** menu, or click the **GPS Status** button in the tool bar.
2. In the **GPS Status** window, click **Exit**.

[Top of Page](#)

Configuration

Configuring the General Settings

You can customize how the Dell Mobile Broadband Card Utility appears on the desktop and its connection behavior. You can configure it to launch on startup and specify the profile to use. You can also configure it to be displayed on top of other running applications and configure the lock code.



User Interface	
Option	Description
Always On Top	Select this option to always display the Dell Mobile Broadband Card Utility on top of other applications.
Sound Effects On	Select this option to turn on sound effects.
Launch On Startup	Select this option if you want to launch the Dell Mobile Broadband Card Utility when you start your notebook computer. Connection logging is not available if you select this option.
Show Activation Reminder	Select this option if you want to be reminded when you start the Dell Mobile Broadband Card Utility to activate your card if it is not yet activated.
Language	
Option	Description
<i>Language drop-down list</i>	To change the language, select a language from the drop-down box.
Options	
Option	Description
System Tray	Set this option if you want the Dell Mobile Broadband Card to display status icons in the status bar.
Enforce VPN (Admin Mode)	Set this option if you want to require a VPN connection when the Dell Mobile Broadband Card Utility starts up. You must have Windows administrator privileges to set this option.

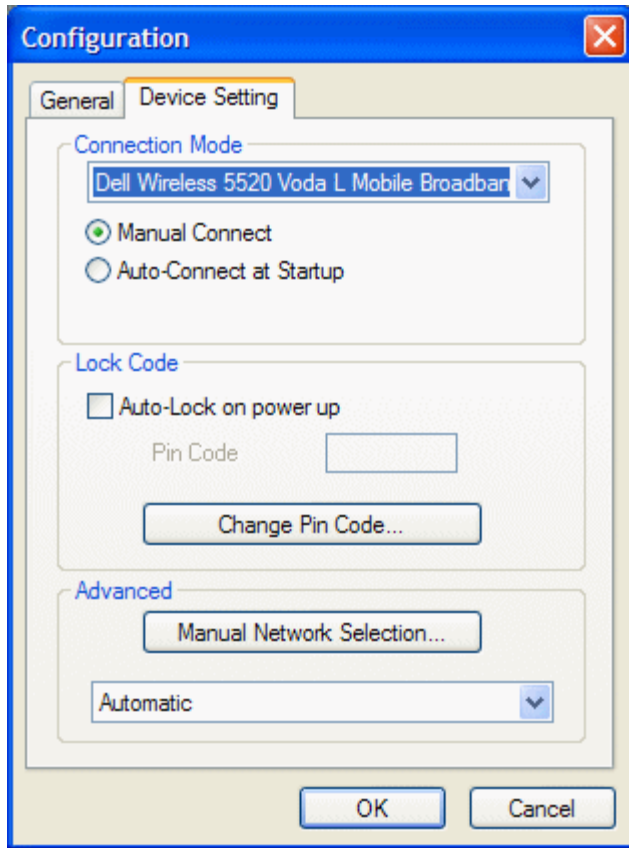
To configure the General settings:

1. In the **Main** window, select **Configuration** from the **Edit** menu.
2. In the **Configuration** dialog box, click the **General** tab if it is not already selected, and set any of the following:

- To always display the Dell Mobile Broadband Card Utility on top of other applications, select **Always On Top**.
 - o To turn sound effects on or off, select or deselect **Sound Effects On**.
 - o To launch the utility on startup, select **Launch on Startup**. You must have administrator privileges to modify this setting.
 - o To show an activation reminder if you have not yet activated your card, select **Show Activation Reminder**.
3. To close the dialog box and save your settings, click **OK**.

Configuring the Device Settings

You can configure your mobile broadband card to automatically connect to the network when you power up your system or manually connect and disconnect using the Connect/Disconnect button in the main window. You can also require a PIN code to unlock your mobile broadband card on startup.




Connection Mode	
Option	Description
Connection Mode	Select your mobile broadband card.
Manual Connect	Select this option if you want to manually connect and disconnect from the network.
Auto-Connect At Startup	Select this option if you want to auto-connect at startup using NDIS . If you choose this option, the card will be up, running, and connected by the time you log into Windows.
Lock Code	
Option	Description
Auto-Lock On Power Up	Set this option to require a PIN code to unlock your mobile broadband card when you start up.
Pin Code	If you select the Auto-Lock On Power Up option, enter the PIN code in this text box that will be required to unlock your mobile broadband card. If you unlock your mobile broadband card using the PUK code provided by your service provider, the PIN code is automatically set to "0000".

Change Pin Code...	Click this button to open the Change Pin Code dialog box and change your PIN code.
Advanced	
Option	Description
Manual Network Selection...	Click this button to open the Manual Network selection dialog box and choose a network.
<i>Network Type drop-down list</i>	Select a network type from the drop-down list. The network type—Automatic, GPRS Only, or UMTS Only—determine the type of network to look for when your notebook computer starts up. Select Automatic to look for the best network available of either type.

To configure the connection settings:

1. In the **Main** window, select **Configuration** from the **Edit** menu.
2. In the **Configuration** dialog box, click the **Device Setting** tab, and set any of the following:
 - o In the **Connection Mode** drop-down list, select your mobile broadband card.
 - o Select a connection mode option: **Manual Connect** to manually control the connection, or **Auto-Connect At Startup** to connect automatically at startup using [NDIS](#).
3. To close the dialog box and save your settings, click **OK**.

 **NOTE:** If you choose Auto-Connect At Startup mode, you will always be connected when you start your computer provided you are in a data service coverage area.

To configure the lock code settings:

1. In the **Main** window, select **Configuration** from the **Edit** menu.
2. In the **Configuration** dialog box, click the **Device Setting** tab, and set any of the following:
 - o To require a PIN code to unlock your notebook computer, select the **Auto-Lock On Power Up** check box and enter the PIN code in the **Pin Code** box.
 - o To change the PIN code, click the **Change Pin Code...** button to open the **Change Pin Code** dialog box, enter the current PIN code in the **Current Code** box and the new code in the **New Code** and **New Code Confirm** boxes, and click **OK**.
3. To close the **Configuration** dialog box and save your settings, click **OK**.

To configure the Advanced settings:

1. In the **Main** window, select **Configuration** from the **Edit** menu.
2. In the **Configuration** dialog box, click the **Device Setting** tab, and set any of the following:
3. To select a network manually, click **Manual Network Selection...**
In the **Manual Network Selection** dialog box, select the network and click **OK**. In the drop-down list box, select a network type to look for on startup.
4. To close the **Configuration** dialog box and save your settings, click **OK**.

[Top of Page](#)

Additional Features

Additional features include:

- Device Properties
- Connection Log
- Copyright, date, and version information

For information on these additional features, see [Additional Features](#).

Please read all [restrictions and disclaimers](#).

[Top of Page](#)

[Back to Contents Page](#)

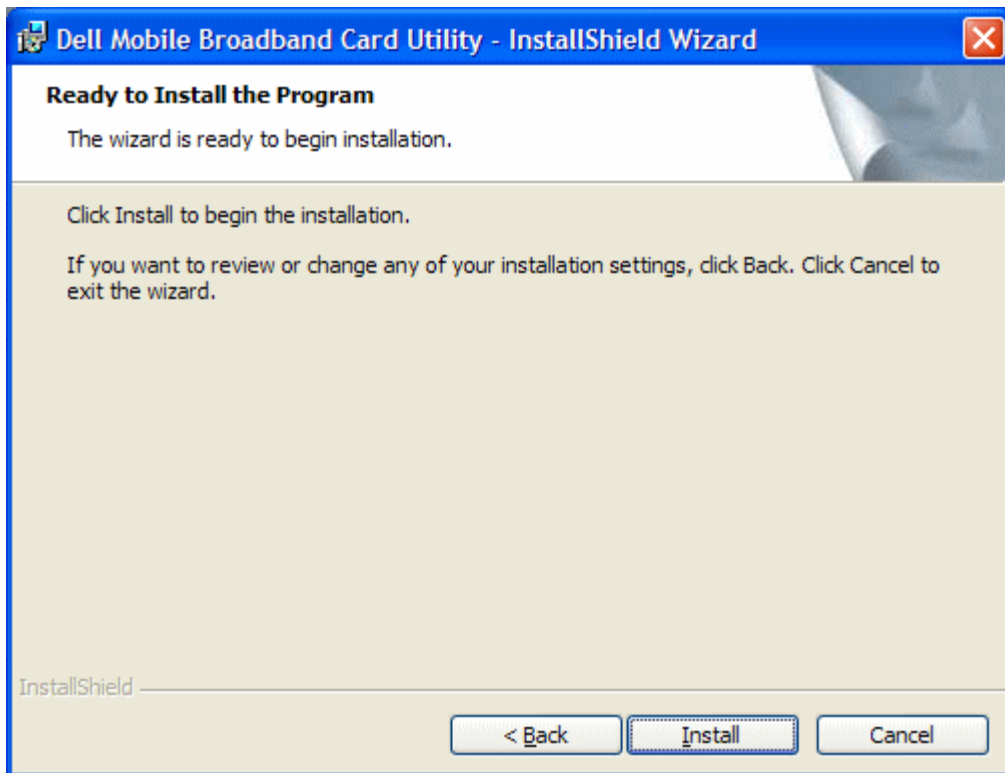
Installation: Dell™ Mobile Broadband Card Utility User's Guide

If the Dell Mobile Broadband Card Utility software was not pre-installed by Dell (generally the case if the Dell Wireless 5520 Mobile Broadband 3G HSDPA Mini-Card was purchased separately), then follow the installation instructions, listed below, to install the Dell Mobile Broadband Card Utility software.

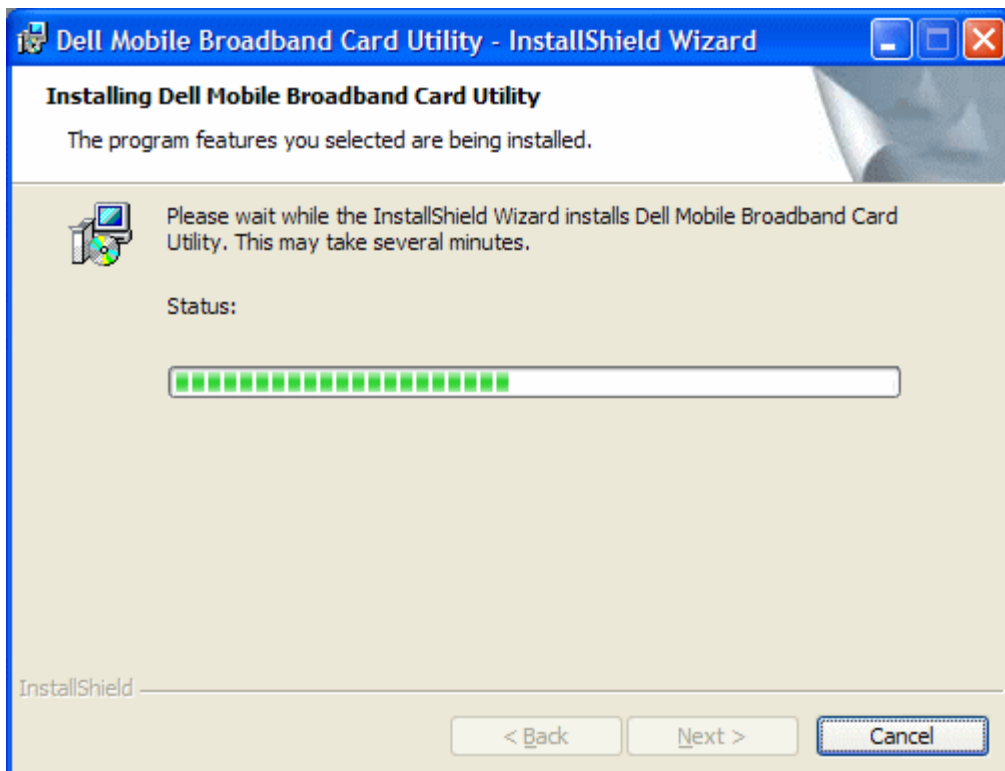
1. Insert the Dell Mobile Broadband Card Utility CD into your notebook computer. The install program presents you with the Welcome to the InstallShield Wizard for Dell Mobile Broadband Card Utility screen.



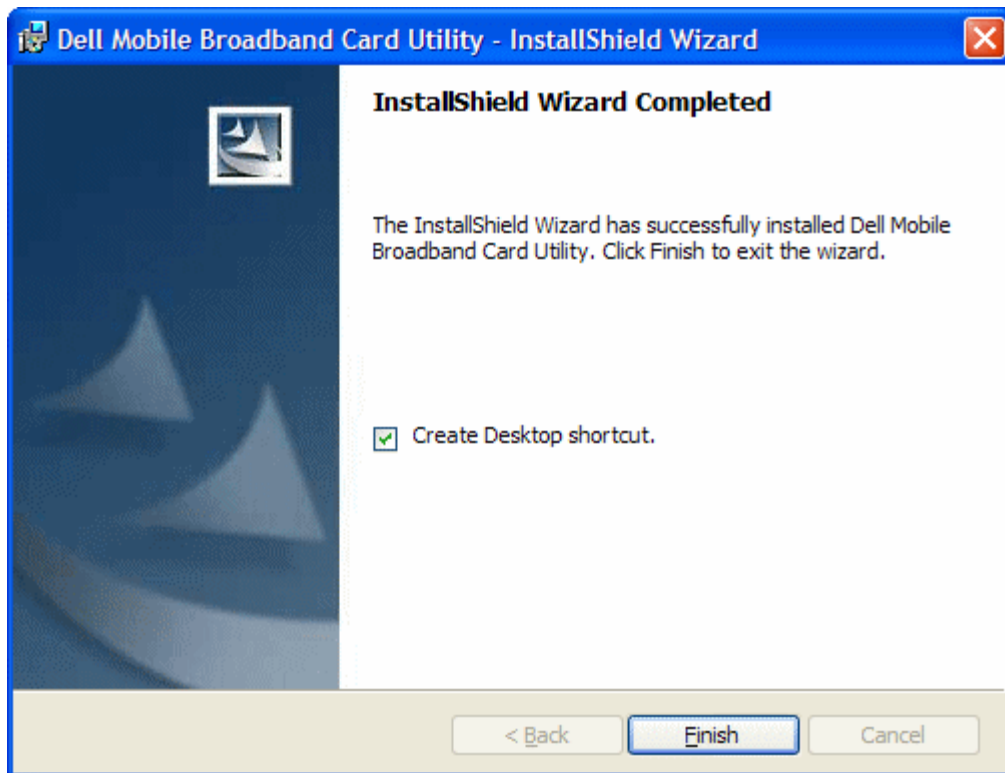
2. Click **Next**. The Ready to Install the Program screen appears.



3. In the **Ready to the Install the Program** screen, click **Install**. As the program is installed, the Installing Dell Mobile Broadband Card Utility screen shows the installation progress.



When the installation completes, the InstallShield Wizard Completed screen appears.



4. In the **InstallShield Wizard Completed** screen, click **Finish**. For instructions on launching the utility and getting connected, [click here](#).

[Top of Page](#)

Please read all [restrictions and disclaimers](#).

[Top of Page](#)

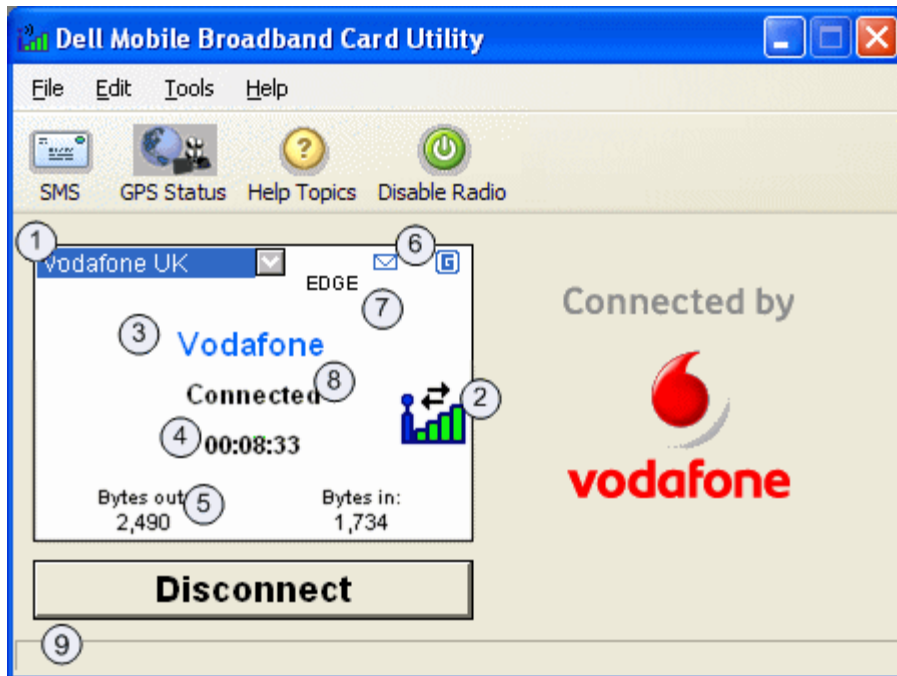
[Back to Contents Page](#)

Getting Around the Utility: Dell™ Mobile Broadband Card Utility User's Guide






- [Main Window](#)
- [Status Pane](#)
- [System Tray](#)

Main Window

The Dell Mobile Broadband Card Utility will open with the main window by default. This view is where you manage your broadband connections. The main window displays the network connections available. In addition, the Main Window displays strength of your mobile broadband connection, your current connection state, elapsed time of the connection and the connection status. For more information, see [Connecting to the Network](#).



The Main Window buttons allow you to connect to the network and access additional Dell Mobile Broadband Card Utility applications and features.

Button	Description
	Opens the SMS Client for sending and receiving SMS text messages.
	Opens the GPS Status window . GPS is available only on supported systems. The Dell Mobile Broadband Card Utility determines whether your system is supported during installation.
	Opens the online help.
	Enables or disables the Dell Mobile Broadband Card.
	Connects you to the network.

Disconnect

Disconnects you from the network.

Status Pane

Information regarding your current network connection can be seen in the Status pane in the middle of the Dell Mobile Broadband Card Utility main window. Status information is displayed during the connection process as well as while connected. When not connected, the status text in the lower left corner will display "Not connected" for the currently selected network. The timer will display "00:00:00". Once connected, the status text will display "Connected" and the elapsed timer will begin to run.

① Profile Selector

Displays your service provider's profile, which includes information required to connect to the network. The default profile is preset and locked.

Main Window Status Indicators

The Main Window status indicators provide information about the current network connection.

② Signal Bar

Indicates the quality of the broadband connection. A weak signal may result in reduced data speeds or the inability to connect. To improve the signal quality, try changing the orientation or position of your computer.

③ Service Provider Name

Displays the name of the currently connected service provider.

④ Connection Duration





Displays the number of hours, minutes, and seconds the current connection has been active.

⑤ Bytes Out/Bytes In

Displays the number of bytes received by and sent from your computer during the current session. This is not related to your service provider's billing information.

⑥ Status Icon Display

Indicates the following:

-  Roaming: The device is roaming away from the home network. Additional charges may apply for connections.
-  Locked: The device is locked. When in this state, connection is disabled.
-  SMS: A new SMS text message has been received.
-  GPS: GPS is enabled.

⑦ Mobile Broadband Technology

The Mobile Broadband Technology Display indicates which of the following mobile broadband technologies are used for the current connection.

Technology	Description
GPRS	General Packet Radio Service. GPRS is a packet-based broadband service with download speeds up to 86kbps. GPRS is considered an evolutionary step to more advanced technologies such as EDGE and WCDMA.
EDGE	Enhanced Data GSM Environment OR Enhanced Data for Global Evolution. EDGE is an enhanced version of GPRS that enables the delivery of multimedia and other broadband applications to mobile devices. It is designed to deliver data downloads at rates up to 237kbps and is considered an evolutionary step to 3G/UMTS.
WCDMA	Wideband Code Division Multiple Access. Based on the GSM technology evolution roadmap, WCDMA supports upload and download speeds up to 384kbps.
HSDPA	High Speed Downlink Packet Access. HSDPA is an enhanced version of WCDMA that supports wireless broadband connection with download speeds up to 3.6 Mbps This enhanced 3G technology quickly enables download high-bandwidth multimedia files, high resolution graphics and other complex files, and view email attachments at broadband-like speeds.

8 Mobile Broadband Card State

Mobile broadband card State messages appear in the main window and indicate the current state of the mobile broadband card. For example, when the mobile broadband card is ready to connect, the "Ready" message is displayed. When you are connected, the "Connected" message is displayed. The following lists the possible messages and a description of each:

Mobile Broadband Card State	Description
Activation in Progress...	The mobile broadband card is being activated.
Initializing Card	The mobile broadband card is initializing.
Ready	The mobile broadband card is ready to connect.
Connecting...	The mobile broadband card is connecting to the network.
Authenticating...	Your ISP is authenticating your username and password.
Connected	The mobile broadband card is connected to the network.
Disconnecting	The mobile broadband card is disconnecting from the network.
Disconnected	The mobile broadband card is disconnected from the network.
No Card Detected	The mobile broadband card is disabled.
SIM Not Activated	The SIM card is not activated.
SIM Not Found	The SIM card is not inserted.
Searching for Network...	The mobile broadband card is searching for a network.
No Service	No network service is available.
Exiting...	The Dell Mobile Broadband Card Utility is exiting and the mobile broadband card is disconnecting.
Device is Locked	The mobile broadband card is locked.
Radio Disabled	Indicates that the mobile broadband card has been disabled. It is required that the mobile broadband card be disabled before boarding a plane.

9 Status Bar Messages

Status messages appear in the status bar actions you should take. The following lists the possible status bar messages and a description of each:

Status Bar Message	Description
Press "Connect" to access the Carrier network.	The internal modem is ready to connect.
To unlock the device press "Unlock".	The internal modem is locked.
To enable radio click "Enable Radio".	Indicates that the internal modem has been disabled. The modem must be disabled before boarding a plane.

[Top of Page](#)

System Tray

In addition to the state messages displayed in the Status pane, the current status is indicated by the system tray icons.

- Double-click on the system tray icon to start the Dell Mobile Broadband Card Utility.
- Right-click on the system tray icon to display a menu with other options.

The following shows the status tray icons and a description of each:



Broadband disabled or card not activated.



No card detected or hardware initializing.



Card detected and searching for network. No service yet.



Card is in manual connect mode and ready for connection. Use the icon to open the connection manager to connect Mobile Broadband when needed.



Card is in auto-connect mode and may be connected. Use the icon to open the connection manager to see current connection status when needed.



Attached to the network and ready to connect.



Connected to data service.

[Top of Page](#)

Please read all [restrictions and disclaimers](#).

[Top of Page](#)

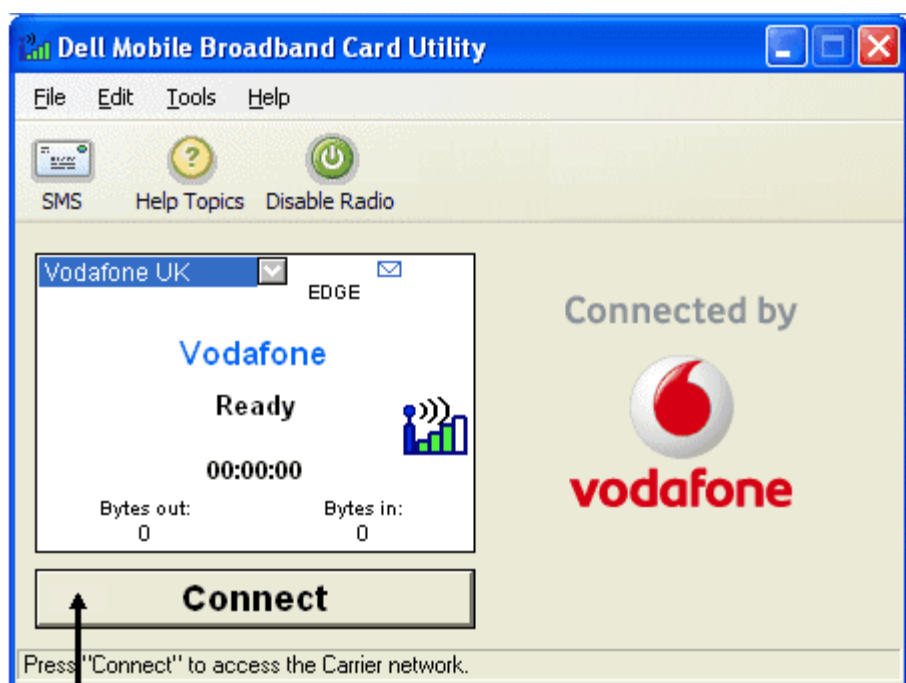
[Back to Contents Page](#)

Connecting to the Network: Dell™ Mobile Broadband Card Utility User's Guide


 **NOTE:** Before connecting ensure your Dell Mobile Broadband Card is activated. [Click here](#) for instructions on activating.


Once your mobile broadband card is activated, connecting to the Internet is as simple as selecting a connection profile and clicking the Connect button.

1. In the **Main** window, your pre-configured profile is already selected in the drop-down list. For more information on how to use profiles, [click here](#).
2. Click the **Connect** button.



Connect button

 **NOTE:** Check with your service provider to ensure you are in a coverage area before connecting. Note that usage data is for informational purposes only and cannot be used to verify usage data with your service provider.

 **NOTE:** You can also set your mobile broadband card to automatically connect to the network when you start your computer. For more information, see [Configuration](#).

Once connected, the **Connect** button changes to **Disconnect**. Click the button to end your current connection. To connect to any other network shown, select it from the Profile list, and then click **Connect**.

 **NOTE:** If your connection fails, see [Troubleshooting](#).

[Top of Page](#)

Please read all [restrictions and disclaimers](#).

[Top of Page](#)

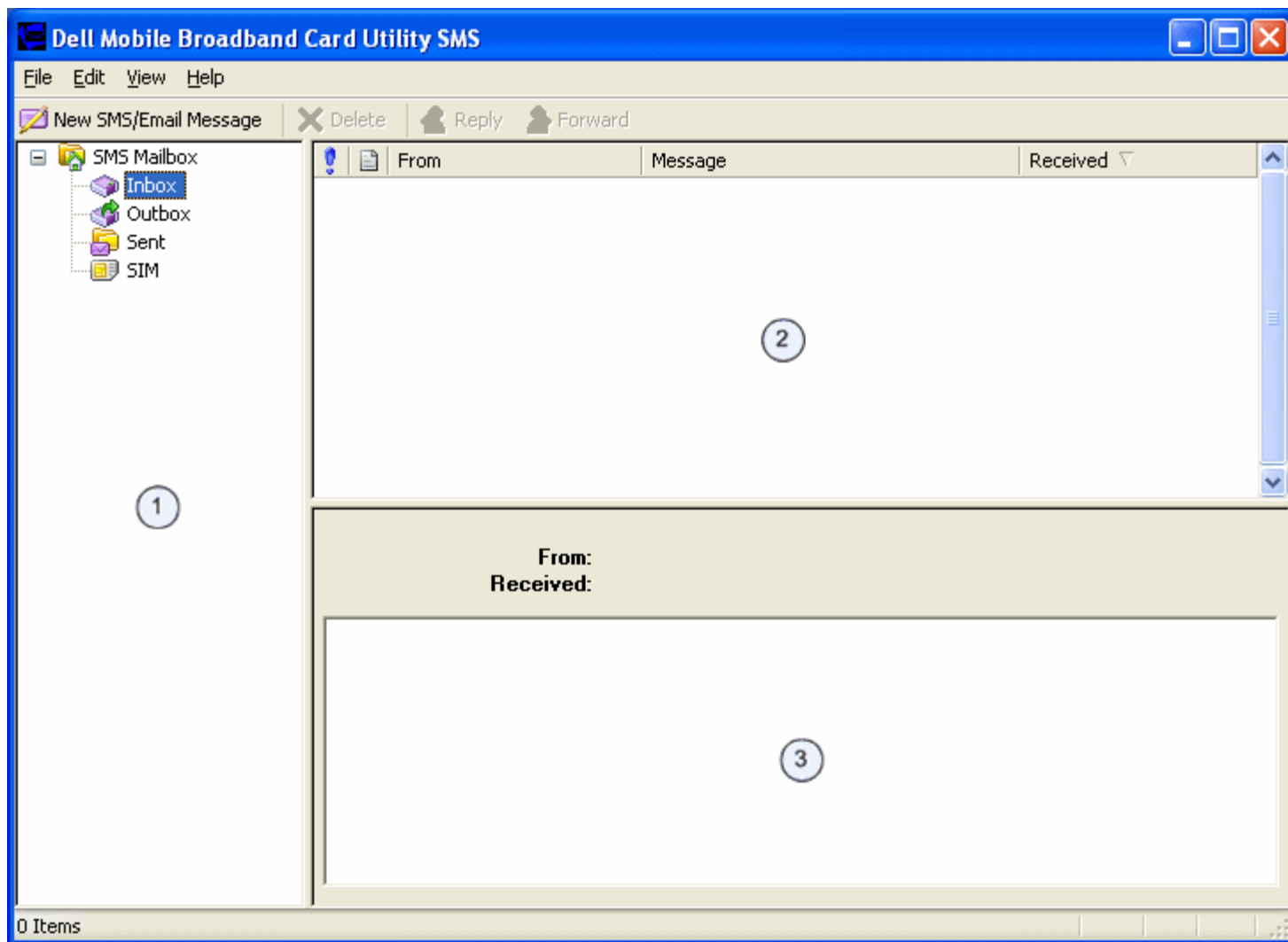
[Back to Contents Page](#)

Sending and Receiving SMS Messages: Dell™ Mobile Broadband Card Utility User's Guide

- [About the SMS Message Client](#)
- [Starting the SMS Client](#)
- [Managing Mailboxes](#)
- [Composing and Sending Messages](#)
- [Managing Received Messages](#)
- [Managing Your Address Book](#)

About the SMS Message Client

SMS (Short Message Service) enables you to send and receive short text messages to and from mobile devices. The Dell Mobile Broadband Card Utility provides an easy-to-use SMS Client for storing frequently used contact information and easily composing, sending, and receiving SMS messages.



Starting the SMS Client

To start the SMS client:

In the **Main** window, select **SMS Messages** from the **Tools** menu.

The SMS Client Main Window

The SMS Client main window consists of three panes:

Pane	Description
① Mailbox	Displays the navigation pane for opening mailboxes.
② Subject	Displays message text or subject lines for message of the currently selected mailbox.
③ Message	Displays the message body of the message currently selected in the Subject pane.



[Top of Page](#)

Managing Mailboxes



The SMS Client Mailbox pane includes the following mailboxes:

Mailbox	Description
Inbox	Contains your incoming messages.
Outbox	A temporary storage area for messages waiting to be sent.
Sent	Contains messages you have sent.
SIM	Contains messages from the SIM card.

The Inbox and SIM columns include:

Columns	Description
	The message priority.
	The message type.
From	The name or phone number of the message sender.
Message	The SMS message text or the subject line of an email message.
Received	The date the message was received.

The Outbox and Sent columns include:

Columns	Description
	The message priority.
	The message type.
To	The recipient's name or phone number.

Message	The message text.
Sent	The date the message was sent.

Viewing Messages

To open a mailbox:

In the left pane, click on the mailbox. The current messages are displayed in the Subject pane.

Sorting Messages

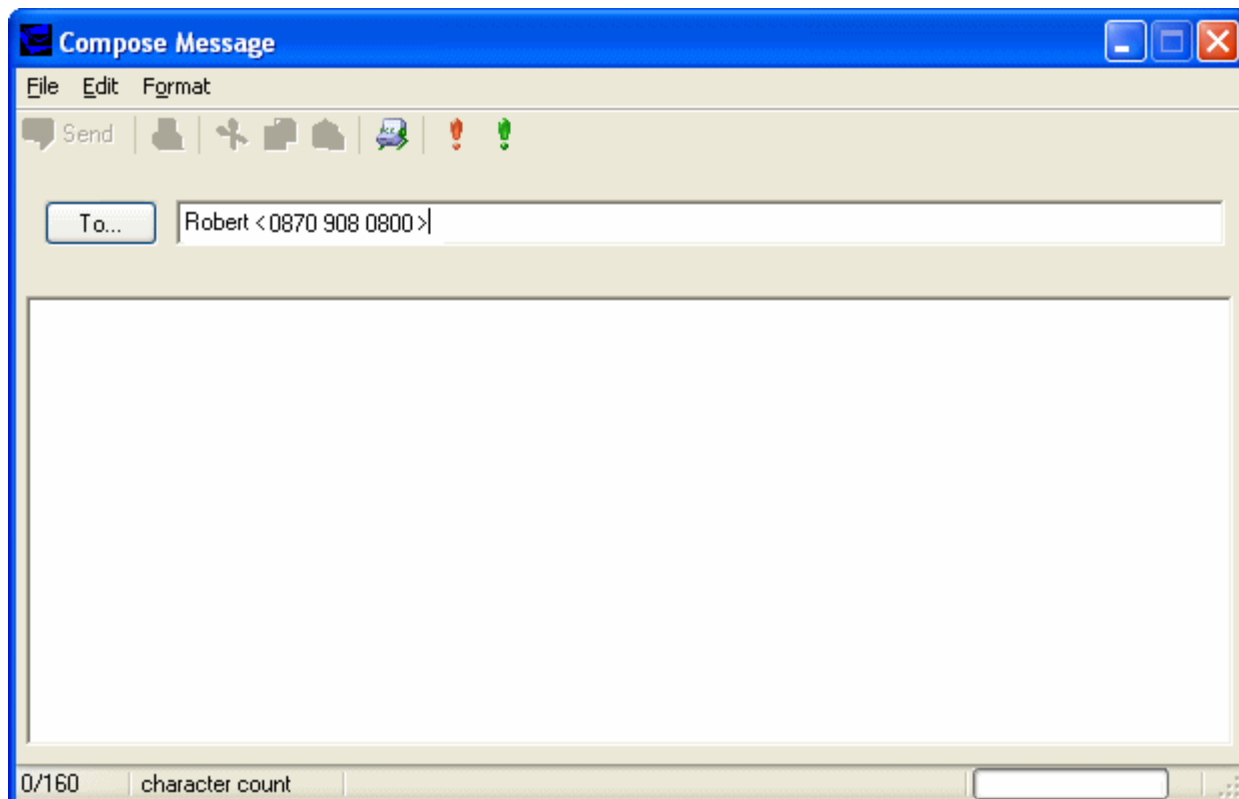
You can sort messages in any of your mailboxes by any column in either ascending or descending order. An arrow indicates the current column. An up arrow indicates the column is sorted in ascending order. A down arrow indicates descending order.

To sort messages:

- To sort by a column, click on the column heading.
- To toggle from ascending to descending order, or descending to ascending, click on the column again.

[Top of Page](#)



Composing and Sending Messages



NOTE: An SMS message can contain up to 160 alphabetic or numeric characters and cannot contain any images or graphics. A message over 160 characters will be divided into multiple messages. Your carrier may reduce the character limit when sending multiple messages.

To compose an SMS message:




1. On the toolbar, click the  **New SMS/Email Message** button.

2. In the **Compose Message** dialog box, specify recipients for the message either of the following methods:
 - o In the **To...** box, type the phone number or email address of each recipient, separating names with a semicolon (;).
 - o To select recipients from your address book, click the **Address Book**  button or click the **To...** button and select one or more recipients from the **Select Recipients** dialog box as described in [Selecting Recipients From Your Address Book](#).
3. To set message format, click on a priority icon. For more information, see [Setting Message Format](#).
4. Type the text of your message in the text entry area. As you type your message, the current character count is displayed at the bottom of the window. You can enter up to 160 characters.
5. To send the message, click the  **Send** button.

Cutting, Copying, and Pasting Text

You can cut or copy text and paste it in the same message or to another message.

To use the cut, copy, and paste options:

1. Select the text you want to cut or copy. To select all of the text, select **Select All** from the **Edit** menu, or press **Ctrl+A** on the keyboard.
2. Do any of the following:
 - o Click  on the toolbar, select **Cut** from the **Edit** menu, or press **Ctrl+X** on the keyboard to cut the text.
 - o Click  on the toolbar, select **Copy** from the **Edit** menu, or press **Ctrl+C** on the keyboard to copy the text.
3. Click where you want to paste the text and click  on the toolbar, select **Paste** from the **Edit** menu, or press **Ctrl+V** on the keyboard to paste the text.
4. To undo the operation, select **Undo** from the **Edit** menu, or press **Ctrl+Z** on the keyboard.

Printing a Message

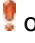

Open the message and click the Print icon.

Setting Message Format

You can define the following message formats:

- Set ASCII or Unicode encoding.
- Set the message priority as emergency or urgent. The email will display the associated priority in the recipient's mailbox.
- Request a receipt notification when the recipient receives the message.

To set the message format:

1. To set the encoding, click select **Format** and then **ASCII** or **Unicode**.
2. To set the priority, click  or select **Format > Priority > Emergency** to indicate an emergency, or click  or select **Format > Priority > Urgent** to mark a message as urgent. To remove the priority setting, click again on the same button or select **Format > Priority > Normal**.
3. To request a receipt notification, select **Format > Receipt**.
4. To save the current settings as the default, select **Format > Set Default**.

Selecting Recipients From Your Address Book


To select recipients from your address book:

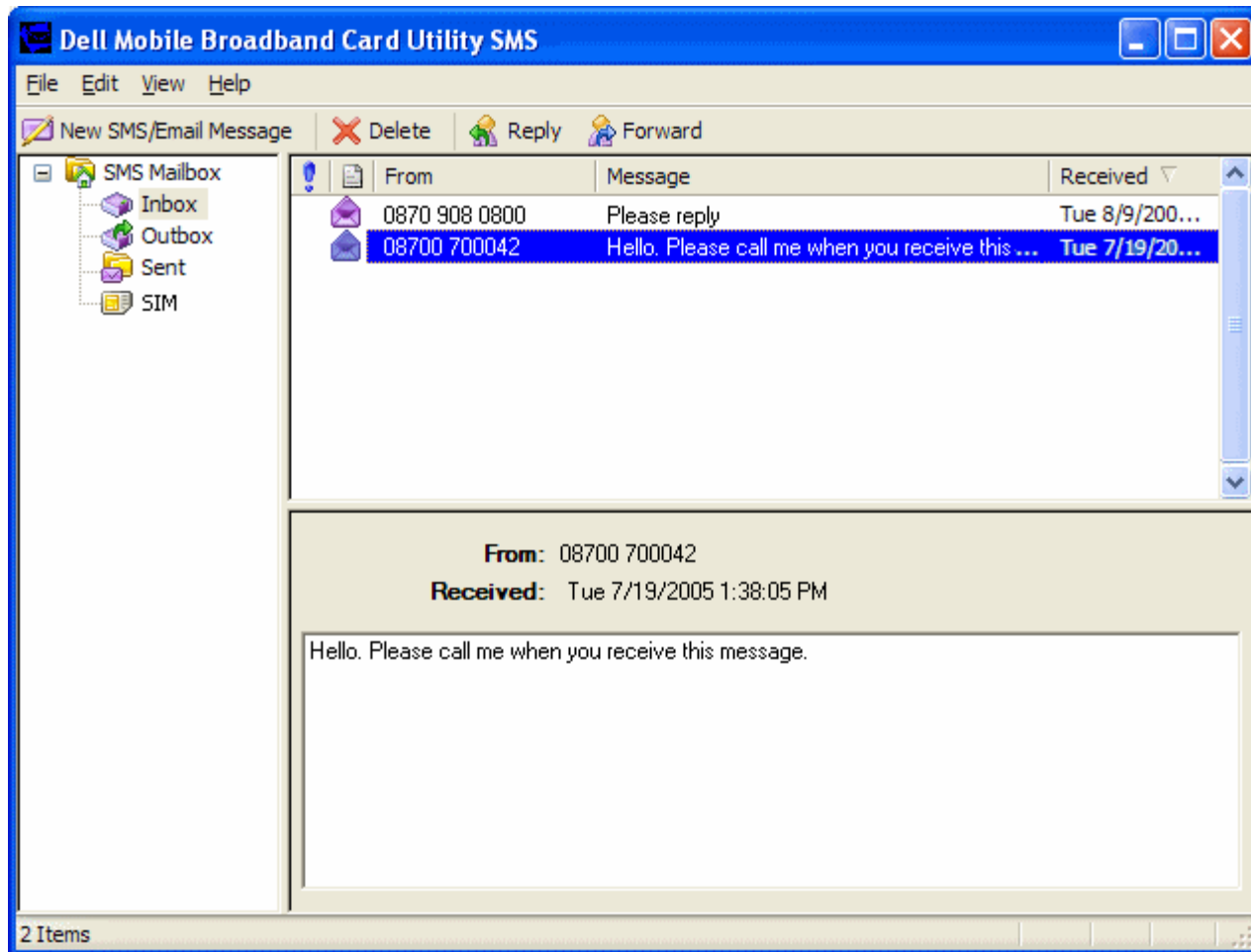
1. In the **Compose Message** dialog box, click the **To...** button.
2. In the **Name** list of the **Select Recipients** dialog box, select the name of a recipient and click the **Mobile->** button to move it into the **Message Recipients** box.
3. To create a new entry in the currently selected address book, click **New Entry....** In the **Contact** dialog box, enter a name and mobile number and click **OK**.
4. To view or edit information any name in the phone book, click on the name in the **Show Names From The** list and click **Edit**. When you have finished viewing or editing the contact information, click **OK** to close the **Contact** dialog box.

5. Click **OK**. The names and numbers you have selected are entered as recipients for your message.

[Top of Page](#)

Managing Received Messages

Once you are attached to the network, you can receive SMS messages. When you receive an SMS message, the SMS Notification  icon appears in the Main window.



Reading Messages

After the SMS Client receives a message you can read it in the lower pane. You can also view messages from the Outbox and Sent folders.

To read your messages:


1. In the **SMS Mailbox** list, click the **Inbox** icon. Your received messages are listed in the upper-right pane.
2. To view the message text, click the message in the message list. The message text is displayed in the lower-right pane.

Replying To a Message

You can quickly reply to a message received in your inbox. When you reply to a message, the Compose Message window opens with the recipient's address entered into the **To** box and with the subject line of received message preceded by "RE:".

To reply to a message:


1. In the message list, click the message you want to reply to.

2. Click the **Reply**  button or right-click and select **Reply** from the pop-up menu.
3. In the **Compose Message** window, create and send your message as described in [Composing and Sending Messages](#).

Forwarding a Message

You can forward a message to another recipient. When you forward a message, the Compose Message window opens with the **To** box empty and with the subject of the received message inserted into the Subject line preceded by "FWD:".


To forward a message:

1. In the message list, click the message you want to reply to.
2. Click the **Forward**  button or right-click and select **Forward** from the pop-up menu.
3. In the **Compose Message** window, compose and send your message as described in [Composing and Sending Messages](#).

Deleting Messages

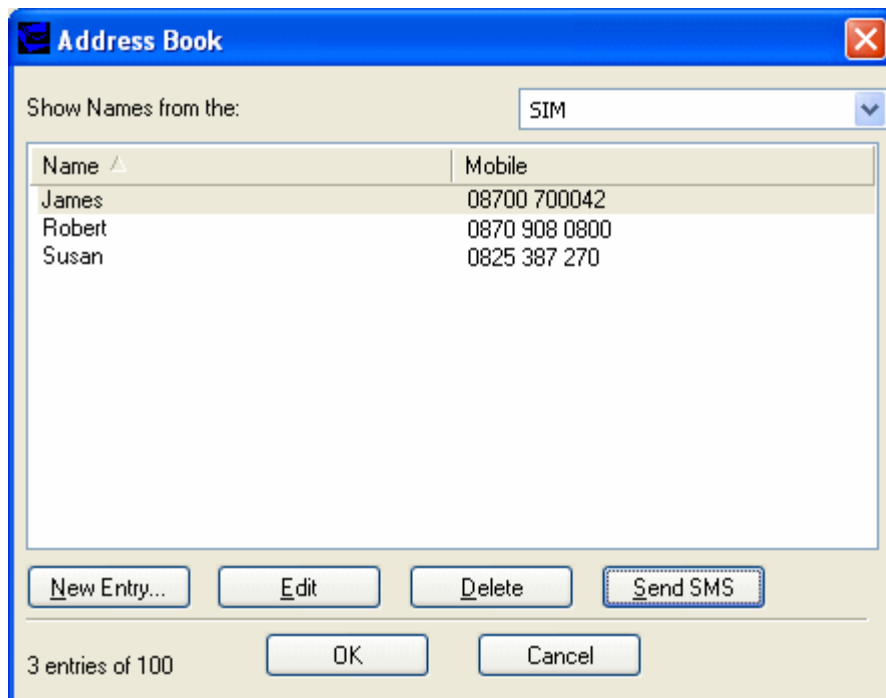
When you are finished with a message, you can delete it. When you delete a message, it is permanently removed from your computer.

To delete messages:

1. In the Subject pane, select the one or more messages you want to delete. To select multiple messages:
 - o To select adjacent messages, click on the first message, press the **Shift** key and click on the last message you want to delete.
 - o To select nonadjacent messages, press the **Ctrl** key and click on each message you want to delete.
2. Click the **Delete**  button or right-click and select **Delete** from the pop-up menu.

[Top of Page](#)

Managing Your Address Book



The *address book* stores addresses of users that you frequently send messages to. Once you store an address, you can quickly access it without having to enter the user's information.

Opening the Address Book

On the Dell Mobile Broadband Card Utility **Main** window, select **Address Book** from the **Tools** menu.

Creating Entries

To add an address to your address book:

1. Open the address book, and click **New Entry...**
2. In the **Contact** dialog box, enter a display name for the user and the user's mobile number.
3. Click **OK**.

Changing Contact Information

You can view properties of any of the contacts in your address book.

To change a contact's information:

1. In the contact list, select the contact whose information you want to change.
2. Click **Edit**.
3. In the **Contact** dialog box, change any of the contact information.
4. Click **OK**.

Deleting Contact Information

Deleting a contact permanently removes the information from the address book.

To delete a contact's information:

1. In the contact list, select the contact you want to delete.
2. Click **Delete**.
3. In the message box, click **Yes** to delete the entry. Click **No** to abort the deletion.

Sending an SMS Message from the Address Book

You can send an SMS message to a contact selected in the address book.

To send an SMS message:

1. In the contact list, select the contact.
2. Click **Send SMS**. The SMS Message client and the Compose SMS dialog boxes open with the selected contact entered into the To.. box.
3. Compose and send the messages as described in [Composing and Sending Messages](#).

Please read all [restrictions and disclaimers](#).

[Top of Page](#)

[Back to Contents Page](#)

Additional Features: Dell™ Mobile Broadband Card Utility User's Guide

- [Introduction](#)
- [Viewing Device Properties](#)
- [Viewing the Connection Log](#)
- [Viewing Copyright, Date, and Version Information](#)

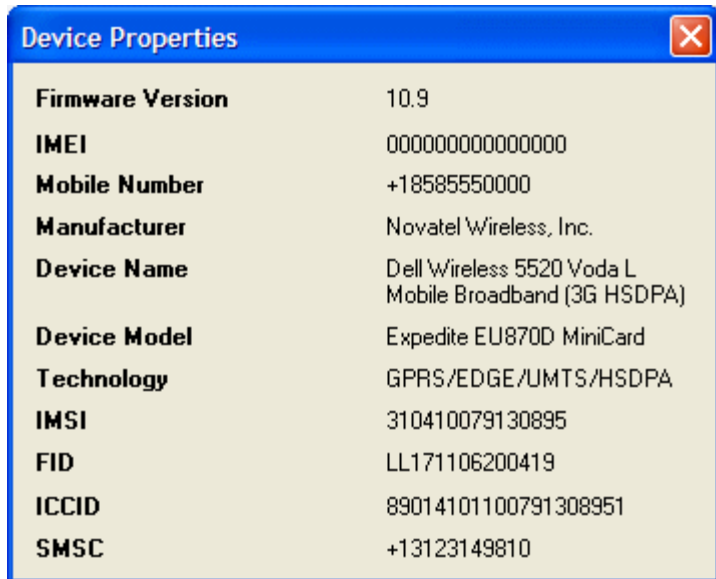
Introduction

You can view properties for the mobile broadband card, a report on current and past connections, and copyright, date, version information for the Dell Mobile Broadband Card Utility.

[Top of Page](#)

Viewing Device Properties

The Device Properties dialog box displays information about the mobile broadband card that may be used for customer support issues. The dialog box displays the following information:



Property	Description
Firmware Version	The version of the mobile broadband card firmware.
IMEI	International Mobile Equipment Identity. A unique number that identifies your mobile broadband card on the network.
Mobile Number	Mobile directory number of the mobile broadband card.
Manufacturer	The name of the mobile broadband card manufacturer.
Device Name	The mobile broadband card device name.
Device Model	The mobile broadband card device number.

Technology	The technology employed by the mobile broadband card.
IMSI	International Mobile Subscriber Identity. A unique number that identifies network mobile phone users.
FID	Factory ID. This is a unique tracking number for factory builds.
ICCID	Integrated Circuit Card ID. A unique number identifying your SIM card.
SMSC	Short Message Service Center. The service center handling the transfer of text messages.


To view properties:

In the **Main** window, select **Device Properties** from the **File** menu.

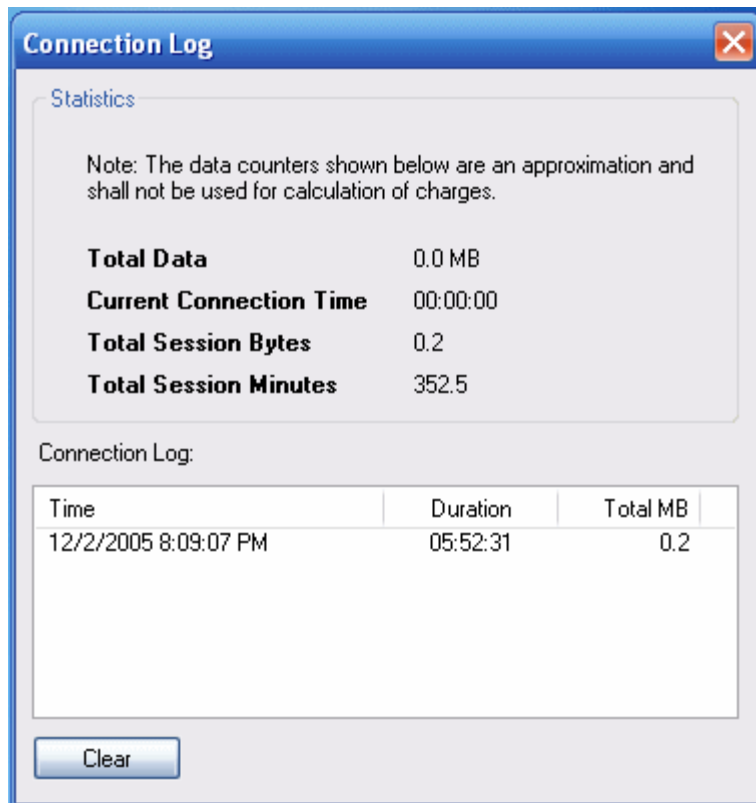
[Top of Page](#)

Viewing the Connection Log

The Connection Log provides statistical information about the current connection as well as a history of past connections.

 **NOTE:** Connection logging is not available if you have enabled the Launch On Startup option. For more information, see [Configuring the General Settings](#)

The following information is displayed for the current connection in the Connection Log dialog box:



Connection Log

Statistics

Note: The data counters shown below are an approximation and shall not be used for calculation of charges.

Total Data 0.0 MB
Current Connection Time 00:00:00
Total Session Bytes 0.2
Total Session Minutes 352.5

Connection Log:

Time	Duration	Total MB
12/2/2005 8:09:07 PM	05:52:31	0.2

Clear

Statistic	Description
Total Data	The total data sent. This is not related to your service provider's billing information.
Current Connection Time	The length of the current connection.
Total Session Bytes	The number of bytes sent and received during the current session.

Total Session Minutes	The number of minutes connected during the current session. This is not related to your service provider's billing information.
-----------------------	---

The time, duration, and total MB of data exchanges are displayed for past sessions in the box at the bottom of the dialog box.

To view the connection log:

1. In the **Main** window, select **Connection Log** from the **Tools** menu.
2. To clear the log at the bottom of the dialog box, click **Clear**.
3. To close the Report dialog box, click the Close box.

[Top of Page](#)

Viewing the Copyright, Date, and Version Information

The About dialog box displays copyright, date, and version information for the Dell Mobile Broadband Card Utility installed on your computer.

To view the installed version:

1. In the **Main** window, select **About** from the **Help** menu to open the About dialog box.
2. To close the About dialog box, click the Close box.

Please read all [restrictions and disclaimers](#).

[Top of Page](#)


[Back to Contents Page](#)

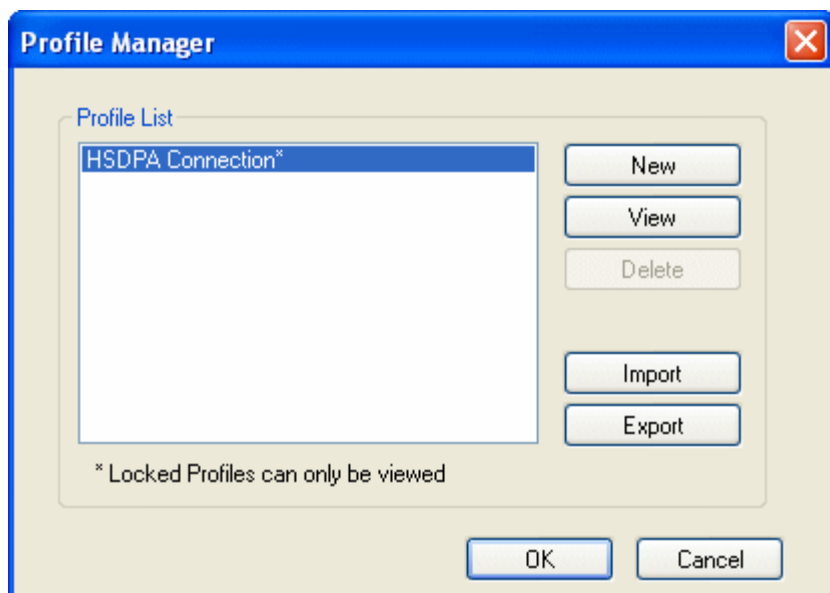
Managing Profiles: Dell™ Mobile Broadband Card Utility User's Guide

- [About Profiles](#)
 - [Creating Profiles](#)
 - [Profile Settings](#)
 - [Viewing and Editing Profiles](#)
 - [Deleting Profiles](#)
 - [Importing and Exporting Profiles](#)
-

About Profiles


Connecting to the network requires a unique set of connection settings. You may have more than one connection account if you are traveling throughout Europe, each with its own settings (e.g., Vodafone France, Vodafone Germany, Vodafone UK, etc). A profile is a complete set of connection information required for connecting to the network in the country in which you are traveling. Profiles allow you to define the connection settings, and easily connect to the network.

 **NOTE:** Default connection profiles have already been created and loaded onto your notebook computer. If you are in a country without a default profile assigned to it, contact Vodafone Customer Service.



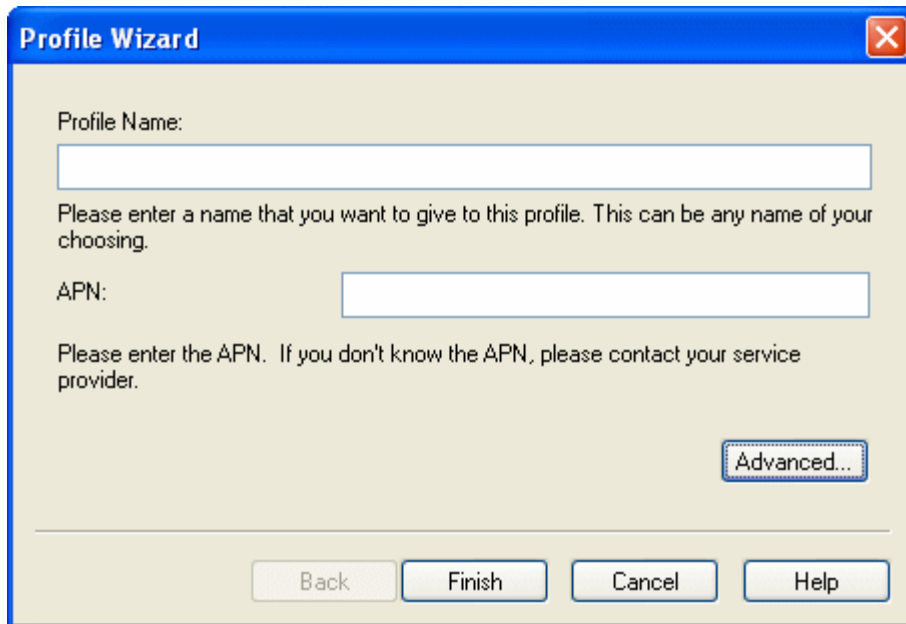
The Profile Manager allows you to view your preloaded profile and also create, edit, view, and delete new profiles. A profile creation wizard leads you through the steps to create a new profile. An asterisk next to a profile name indicates a preloaded profile, which is locked. You cannot edit a locked profile.

Creating Profiles

 **NOTE:** Your service provider can assist you in making the correct selections for your new profile.

To create a profile:

1. In the **Main** window, select **Profile Manager** from the **Edit** menu.
2. Click the **New** button. The first screen of the Profile Wizard appears.



Profile Name:

Please enter a name that you want to give to this profile. This can be any name of your choosing.

APN:

Please enter the APN. If you don't know the APN, please contact your service provider.

Advanced...

Back Finish Cancel Help

3. In the **Profile Name** box, enter a name to identify the profile and select a connection type.
4. In the **APN** box, enter the APN. If you don't know your APN, contact your service provider.
5. Click **Advanced...** to open the Advanced dialog box.
6. In the **Username** box, enter your username or use the default username provided (recommended). The username must be valid with your service provider.
7. In the **Password** box, enter your password or use the default password provided (recommended). The password must be valid with your service provider.
8. Click **OK** to close the Advanced dialog box.
9. Click **Finish**.
10. In the **Profile Manager** window, click **OK**.

[Top of Page](#)

Profile Settings

Profile settings are grouped as follows:

- General
- TCP/IP
- VPN

Each group has its own tab in the Profile Manager. When you select a locked profile in the Profile Manager, the View button is displayed, allowing you to view the profile settings. When you select an unlocked profile, the Edit button appears, enabling you to edit the profile settings.

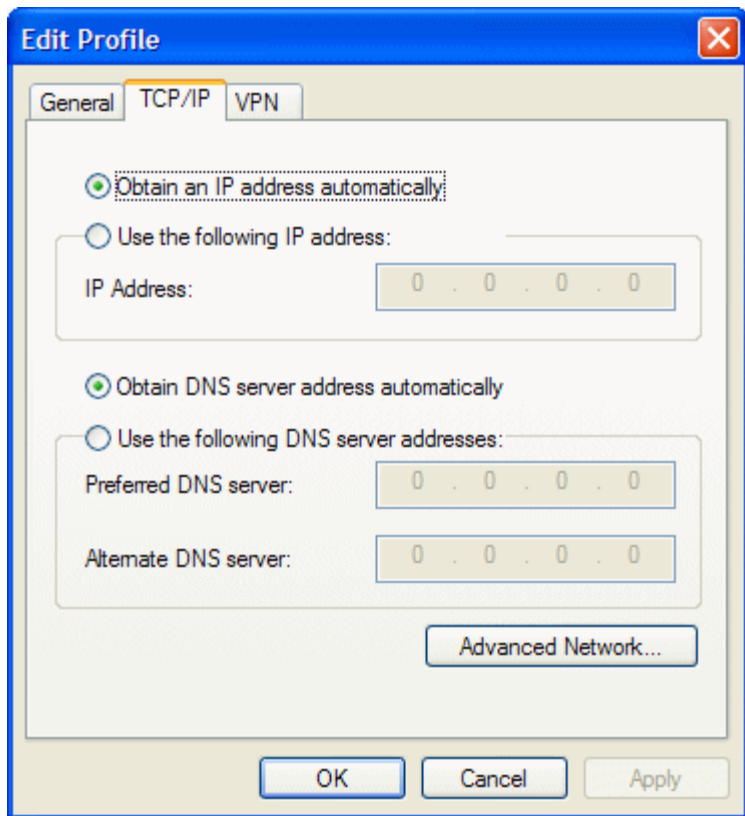
General Settings

The General tab displays general connection profile information. The following are the General settings associated with a connection profile.

Profile Info	
Field	Description
Profile Name	A name to identify the profile. You can enter any name.
Carrier Name	The name of your broadband carrier. Get this information from your service provider.
Connection Info	
Field	Description
User Name	Your user name. Get this from your service provider.
Password	Your password. Get this from your service provider.
Authentication Type	The type of authentication to use: Automatic, PAP , or CHAP . Both PAP and CHAP are types of authentication for PPP . Get this from your service provider.
APN	
Field	Description
APN	The Access Point Name (APN), which provides routing information for GPRS. Get this from your service provider.

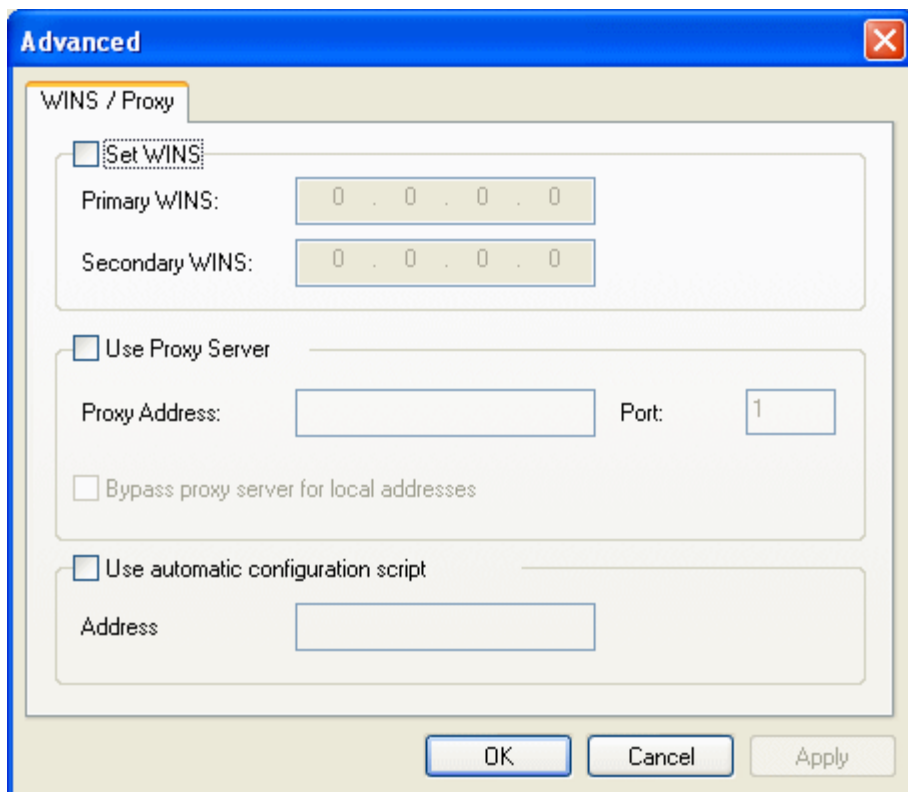
TCP/IP Settings

The TCP/IP tab displays [TCP/IP](#) settings.



Field	Description
Obtain An IP Address Automatically	Select this option to obtain a dynamic IP address.
Use The Following IP Address	Select this option to enable a static IP rather than a dynamic IP address. A static IP is an assigned IP Address that does not change.
IP Address	The IP address to use for the static IP.
Obtain DNS Server Address Automatically	Select this check box if you want to automatically obtain a DNS server address.
Use The Following DNS Server Addresses	Select this check box if you want to specify your own DNS server addresses.
Preferred DNS Server	The IP address of the first DNS server to look for.
Alternate DNS Server	The IP address of a backup DNS server to look for.
Advanced Network	Click this button if you want to open the Advanced dialog box and specify WINS and Proxy information. For more information, see the Advanced dialog box description below.

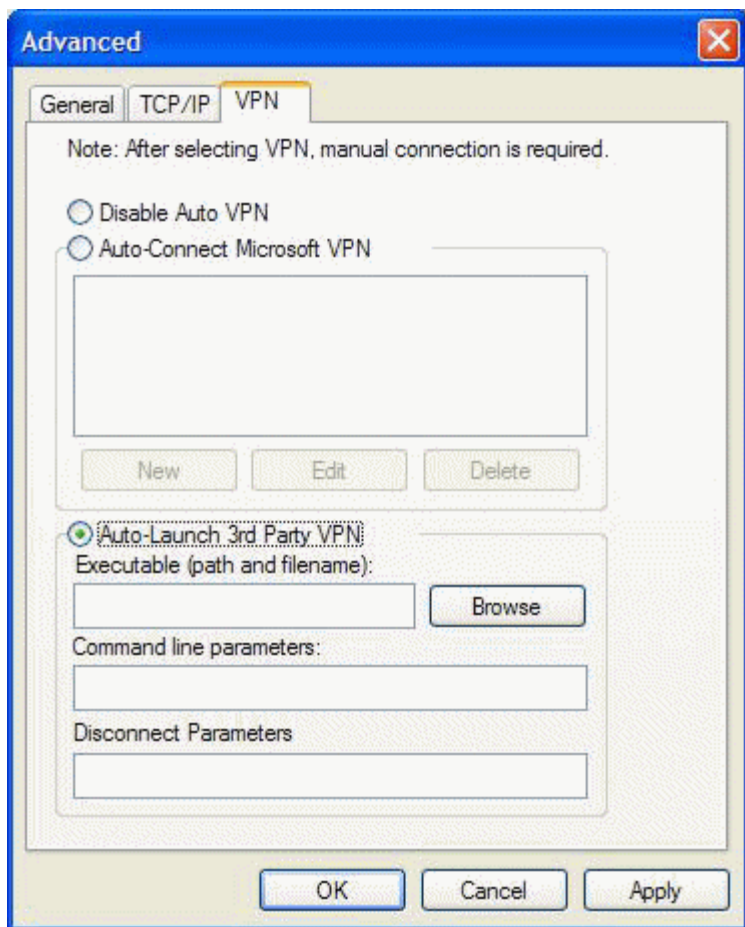
The Advanced dialog box displays [WINS/Proxy](#) settings.



Field	Description
Set WINS	Select this check box to specify WINS settings.
Primary WINS	The IP address of the first WINS server to look for.
Secondary WINS	The IP address of a backup WINS server to look for.
Use Proxy Server	Enables or disables proxy settings. A proxy server acts as a firewall or security barrier between your intranet and the Internet, preventing other people on the Internet from gaining access to confidential information on your internal network or computer. Your telephony system administrator can provide the correct name or IP address to enter here.
Proxy Address	The IP address for the proxy.
Port	The port listened to by the proxy.
Bypass Proxy Server for Local Addresses	Select this check box if you want to bypass the proxy server for local addresses.
Use Automatic Configuration Script	Select this check box if you want to use a configuration script.
Address	Enter the URL of the configuration script.

VPN Settings

You can specify that a [VPN](#) be associated with a 3G connection. When a successful 3G connection is made, the associated VPN connection will also be made. This tab allows you to choose a VPN or disable this feature in the connection profile.



Field	Description
Disable Auto VPN	Select this option if you do not want to automatically connect to the VPN when the connection is made.
Auto-Connect Microsoft VPN	Select this option if you want to automatically connect using the VPN. Click this option to enable the New, Edit, and Delete buttons.
New	Click this button to enter a new VPN profile. Click the Auto-Connect Microsoft VPN option to enable this button.
Edit	Click this button to edit an existing VPN profile. Click on an existing VPN profile to enable this button.
Delete	Click this button delete enter a VPN profile. Click on an existing VPN profile to enable this button.
Auto-Launch 3rd Party VPN	Click this option to automatically launch a third-party VPN on connection.
Executable (path and filename)	Enter a path and the file name to the third-party VPN executable program. Click Browse to locate the file in the Open dialog box.
Command Line Parameters	Enter any command line parameters required by the third-party VPN.
Disconnect Parameters	Enter any disconnect command line parameters supported by the third-party VPN.

Viewing and Editing Profiles

You can edit the connection information of an existing profile unless the profile is locked. A locked profile is indicated by an asterisk (*) in the Profile Manager's Profile List. A locked profile can only be viewed.

To view a locked profile:

1. In the **Main** window, select **Profile Manager** from the **Edit** menu.
2. In the **Profile List**, click on the profile you want to view.
3. Click **View**. The Edit Profile window appears with the editing options disabled.
4. Click on the **General**, **TCP/IP**, or **VPN** tabs and view any of the profile settings.
5. Click **OK** or **Cancel** to close the dialog box.

To edit a profile:

1. In the **Main** window, select **Profile Manager** from the **Edit** menu.
2. In the **Profile List**, click on the profile you want to edit.
3. Click **Edit**. The Edit Profile window appears.
4. Click on the **General**, **TCP/IP**, or **VPN** tabs and edit any of the settings of the currently selected profile.
5. Click **OK**.

[Top of Page](#)

Deleting Profiles

To delete a profile:

1. In the **Main** window, select **Profile Manager** from the **Edit** menu.
2. In the **Profile List**, click on the connection you want to delete.
3. Click the **Delete** button.



NOTE: You cannot delete the default profile. The default profile is indicated by an asterisk (*).

[Top of Page](#)

Importing and Exporting Profiles

You can export profile information to an XML file or import profile information into Profile Manager from an XML file that contains valid profile information.

To import a profile:

1. In the **Main** window, select **Profile Manager** from the **Edit** menu.
2. Click the **Import** button.
3. In the **Open** dialog box, locate the profile to import, and click **Open**. A valid profile must be in XML format and saved with a .xml extension.

To export a profile:

1. In the **Main** window, select **Profile Manager** from the **Edit** menu.
2. In the **Profile List**, click on the profile you want to export.
3. Click the **Export** button.
4. In the **Save As** dialog box, locate the directory where you want to save the profile, enter a name for the profile, and click **Save**. The profile will be saved to XML format. The file must have a .xml extension.

Please read all [restrictions and disclaimers](#).

[Top of Page](#)

[Back to Contents Page](#)