




# Dell™ Bluetooth Speakers

## User's Guide

Regulatory model: AC411



## Notes, Cautions, and Warnings

-  **NOTE:** A NOTE indicates important information that helps you make better use of your speaker.
-  **CAUTION:** A CAUTION indicates potential damage to hardware if instructions are not followed.
-  **WARNING:** A WARNING indicates a potential for property damage, personal injury, or death.

Information in this document is subject to change without notice.  
© 2013 Dell Inc. All rights reserved.

Reproduction of these materials in any manner without the written permission of Dell Inc. is strictly forbidden.

Trademarks used in this text: Dell™ and the DELL logo are trademarks of Dell Inc.; Microsoft® and the Windows start button logo are either trademarks or registered trademarks of Microsoft Corporation in the United States and/or other countries.

Other trademarks and trade names may be used in this document to refer to either the entities claiming the marks and names or their products. Dell Inc. disclaims any proprietary interest in trademarks and trade names other than its own.

**2013 – 08 Rev. A00**

### Restrictions and Disclaimers

The information contained in this document, including all instructions, cautions, and regulatory approvals and certifications, is provided by the supplier and has not been independently verified or tested by Dell. Dell cannot be responsible for damage caused as a result of either following or failing to follow these instructions.

All statements or claims regarding the properties, capabilities, speeds or qualifications of the part referenced in this document are made by the supplier and not by Dell. Dell specifically disclaims knowledge of the accuracy, completeness or substantiation for any such statements. All questions or comments relating to such statements or claims should be directed to the supplier.

### Export Regulations

Customer acknowledges that these products, which may include technology and software, are subject to the customs and export control laws and regulations of the United States ("U.S.") and may also be subject to the customs and export laws and regulations of the country in which the products are manufactured and/or received. Customer agrees to abide by those laws and regulations. Further, under U.S. law, the products may not be sold, leased or otherwise transferred to restricted end-users or to restricted countries. In addition, the products may not be sold, leased or otherwise transferred to, or utilized by an end-user engaged in activities related to weapons of mass destruction, including without limitation, activities related to the design, development, production or use of nuclear weapons, materials, or facilities, missiles or the support of missile projects, and chemical or biological weapons.

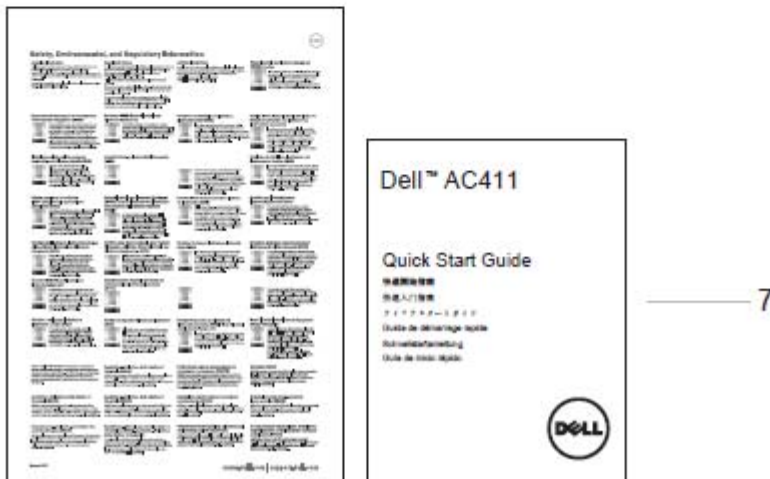
# Contents

<b>Setup</b> .....	<b>4</b>
Contents of the box .....	<b>4</b>
Setting up Your Dell Bluetooth Speakers .....	<b>5</b>
Pairing Your Dell Bluetooth Speakers .....	<b>6</b>
<b>Features</b> .....	<b>9</b>
View of the Remote control .....	<b>9</b>
View of the woofer's rear .....	<b>9</b>
<b>Troubleshooting</b> .....	<b>10</b>
<b>Specifications</b> .....	<b>12</b>
General .....	<b>12</b>
Electrical .....	<b>12</b>
Physical Characteristics .....	<b>12</b>
Environmental .....	<b>12</b>
Bluetooth 3.0 .....	<b>12</b>
<b>Statutory Information</b> .....	<b>13</b>
Warranty .....	<b>13</b>
Regulatory .....	<b>14</b>
<b>Certifications</b> .....	<b>15</b>

[Back to Contents Page](#)

## Setup

### Contents of the box



1. Left satellite speaker
2. Woofer
3. Remote control
4. Right satellite speaker
5. Power adapter
6. AUX-IN cable
7. Documentation

**NOTE:** The documents that shipped with the speaker may vary based on your region.

## Setting up Your Dell Bluetooth Speakers

1. Connect the two satellite speakers to the L and R ports on the woofer.
2. Connect the remote control to the RC IN port on the woofer.
3. Connect the power adapter to the DC IN port.
4. Using the speaker cable, connect the woofer to your computer.

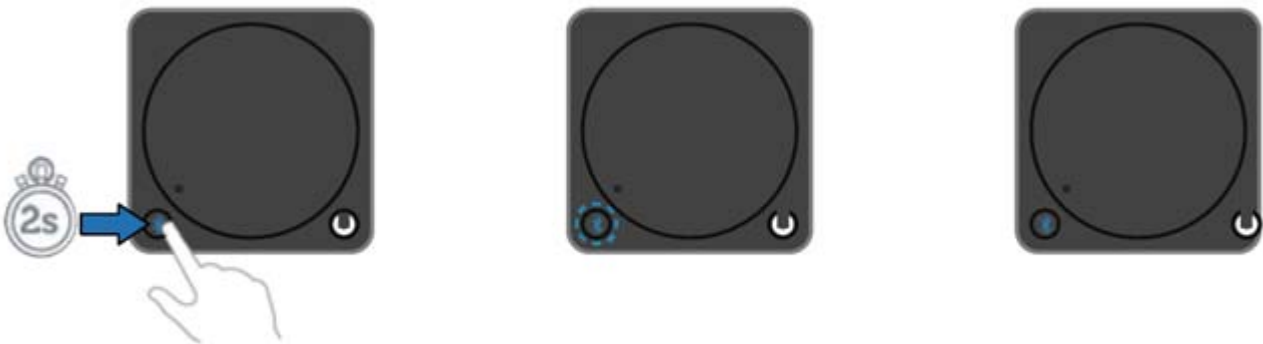


## Pairing Your Dell Bluetooth Speakers

The speaker system needs to be paired before using it.

### Procedure

1. Turn on the bluetooth on your computer or your bluetooth device.
2. Press the power button on the remote control.
3. Press and hold the bluetooth button on the remote control for two seconds to enable device search.

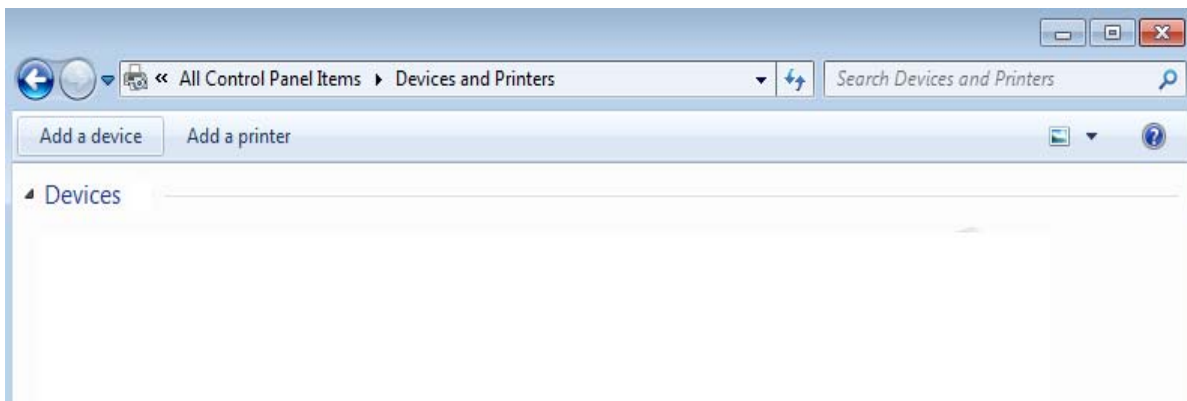


<b>Bluetooth LED:</b>	Off	Blinking	On
<b>Status:</b>	Disconnected	Pairing	Connected

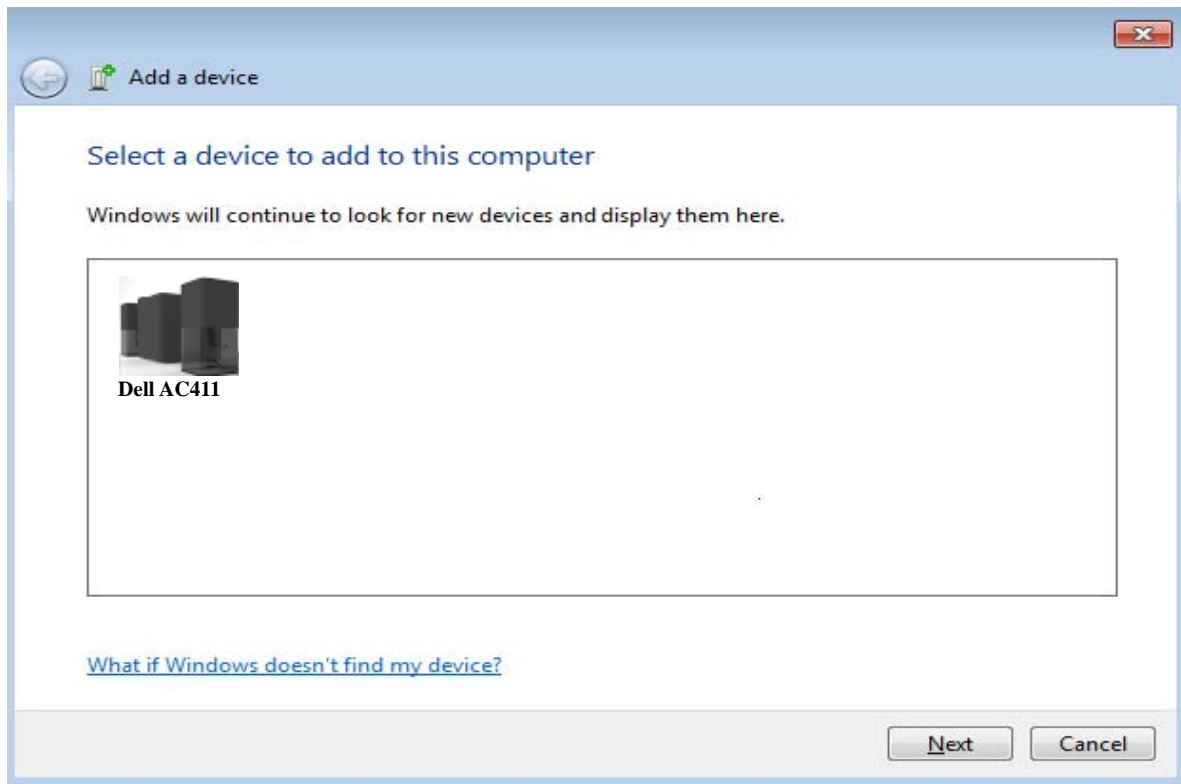
4. Follow the instructions to add the speaker system to your computer based on the operating system installed on your computer.

- Windows 7:

- (i) Click **Start**→ **Control Panel**→ **Devices and Printers**→ **Add a device**.

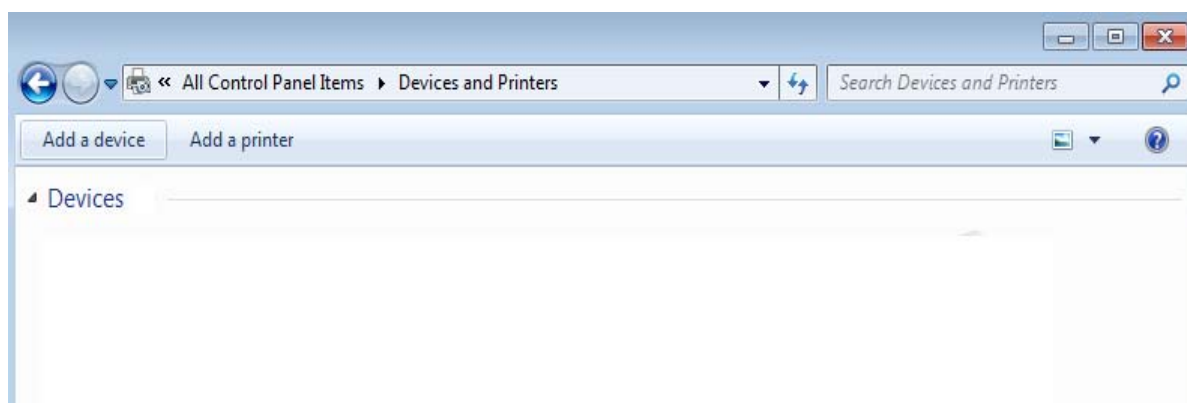


(ii) Follow the instructions on the screen to complete the pairing.

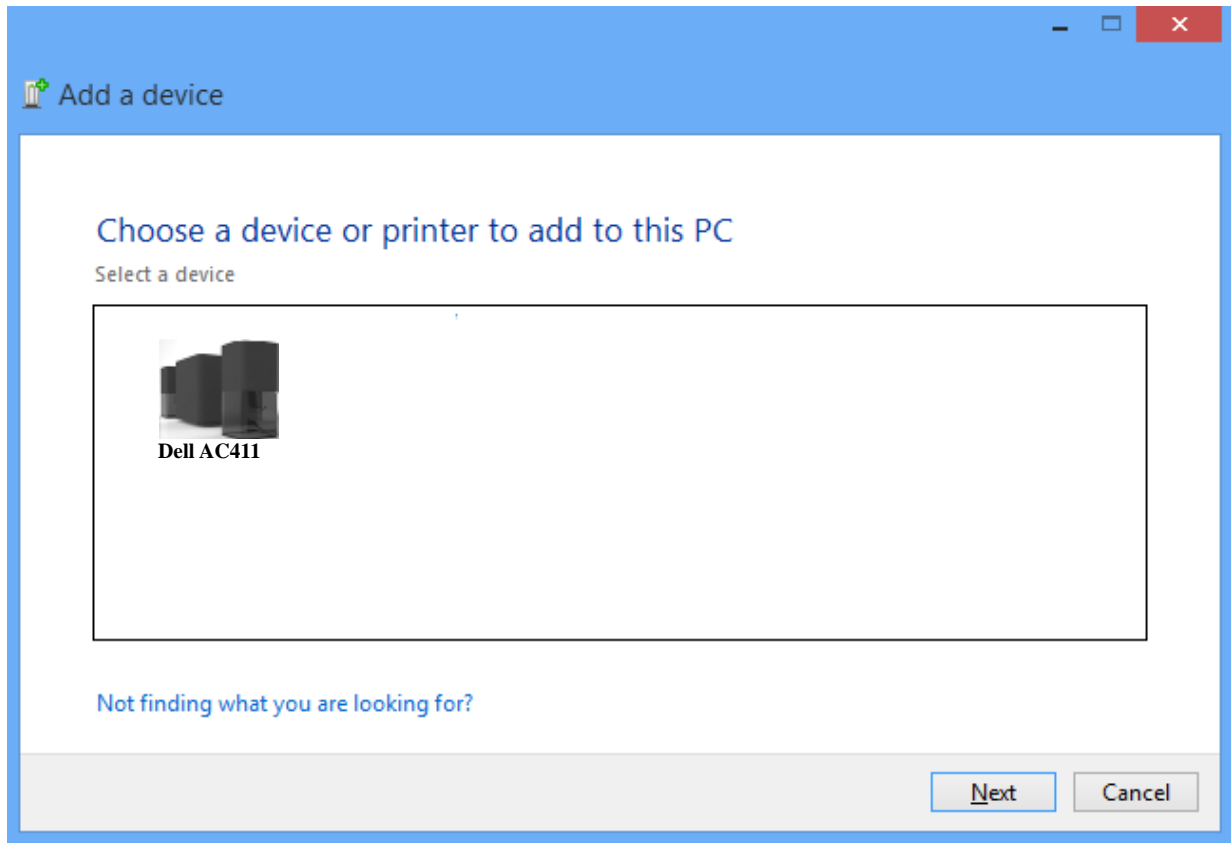


- Windows 8:

(i) Move your mouse pointer to the upper-right or lower-right corner of the screen to open the Charms sidebar, and then click **Settings** → **Control Panel** → **Devices and Printers** → **Add a device**.



(ii) Follow the instructions on the screen to complete the pairing.

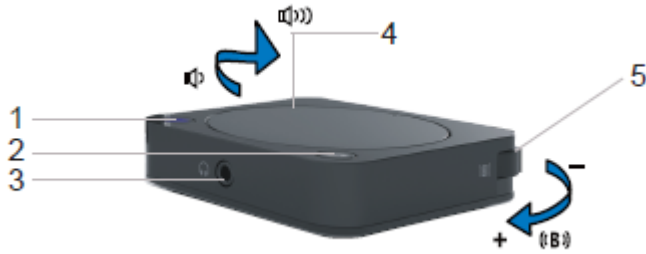




[Back to Contents Page](#)

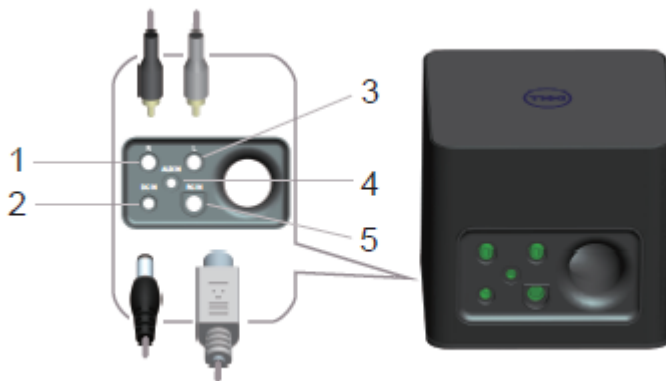
## Features

### Remote Control



1. Bluetooth button
2. Power button
3. Headset port
4. Volume control
5. Bass control

### Woofer



1. Right Satellite-speaker port
2. DC IN port
3. Left Satellite-speaker port
4. AUX-IN port
5. RC IN port

## Troubleshooting the Dell Bluetooth Speakers

If you have problems with your speaker system

COMMON SYMPTOMS	WHAT YOU EXPERIENCE	POSSIBLE SOLUTIONS
Speakers are not functioning properly / No sound from the speakers	Speakers are powered on but the power-status light is off.	<ul style="list-style-type: none"> <li>- If the power-status light is off, check if the wall socket is working. Connect the speakers to a different wall socket and try again.</li> <li>- Make sure the power adapter is connected to the speakers.</li> <li>- The power adapter has failed and needs to be replaced.</li> </ul>
	The power-status light is on but the speakers are not working in the Aux-in mode.	<ul style="list-style-type: none"> <li>- Make sure the Aux-in cable is connected to the Aux-in port and bluetooth LED is turned off. Reseat the Aux-in cable and try again.</li> </ul>
	The power-status light is on but the speakers are not working in the bluetooth mode.	<ul style="list-style-type: none"> <li>- Make sure that the bluetooth on your device is turned on.</li> <li>- Make sure the Bluetooth LED is blinking blue on the remote control.</li> <li>- Pair the speaker with your computer again.</li> </ul>
	The speakers are not appearing in the Devices and Printers list in the operating system.	<ul style="list-style-type: none"> <li>- Restart the speakers.</li> <li>- Pair the speaker with your computer again.</li> </ul>
Sound from the speakers is distorted	Distorted sound in AUX-in mode	<ul style="list-style-type: none"> <li>- Remove any obstructions between the speakers and the user.</li> <li>- Make sure the Aux-in cable is connected firmly to the woofer and your computer.</li> <li>- Set the volume control on the remote control to fifty percent.</li> <li>- Decrease the volume level in the application program.</li> <li>- Clean and reseat all the cables.</li> <li>- Test the speakers on another audio source for example a portable music player.</li> <li>- Ensure no loose objects are touching the speaker.</li> </ul>
	Distorted sound in Bluetooth mode	<ul style="list-style-type: none"> <li>- Remove any obstructions between the speakers and the user.</li> <li>- Set the volume control on the remote control to fifty percent.</li> <li>- Clean and reseat all the cables.</li> <li>- Test the speakers on another audio source for example a portable music player.</li> <li>- Reduce the bass using the remote control</li> <li>- Ensure no loose objects are touching the speaker.</li> </ul>

No sound from one of the speakers	Sound is audible only from one of the speakers.	<ul style="list-style-type: none"> <li>- Remove any obstructions between the speakers and the user.</li> <li>- Make sure the Aux-in cable is connected firmly to the audio source.</li> <li>- In the Windows volume control slide the audio balance to the midpoint.</li> <li>- Clean and reseat all the cables.</li> <li>- Test the speakers on another audio source for example a portable music player.</li> </ul>
Low sound output	Volume is too low	<ul style="list-style-type: none"> <li>- Remove any obstructions between the speakers and the user.</li> <li>- Increase the volume level on the remote control, bluetooth device, operating system, and application program.</li> <li>- Test the speakers on another audio source for example a portable music player.</li> </ul>
Static noise from the speakers	Buzzing Noise	<ul style="list-style-type: none"> <li>- Remove any obstructions between the speakers.</li> <li>- Make sure that there are no loose objects is hanging or touching the speakers.</li> <li>- Try decreasing the volume level on the remote control.</li> </ul>
No sound from headset	No audible sound from the headset in AUX-in mode	<ul style="list-style-type: none"> <li>- Make sure the audio source is playing music.</li> <li>- Make sure the volume level on the audio source and the remote control is not set to minimum.</li> </ul>
	No audible sound from the headset in Bluetooth mode	<ul style="list-style-type: none"> <li>- Make sure the audio source is playing music.</li> <li>- Make sure the bluetooth devices are paired correctly.</li> <li>- Make sure the volume level on the audio source and the remote control is not set to minimum.</li> </ul>
Headset distortion	Distorted sound in AUX-in mode	<ul style="list-style-type: none"> <li>- Remove any obstructions between the speakers and the user.</li> <li>- Make sure the Aux-in cable is connected firmly to the woofer and your computer.</li> <li>- Make sure the RC-in cable is connected firmly to the woofer and the remote control.</li> <li>- Make sure the headset is connected firmly to the remote control.</li> <li>- Set the volume control on the remote control to fifty percent.</li> <li>- Decrease the volume level in the application program.</li> <li>- Clean and reseat all the cables.</li> <li>- Test the headset on another audio source for example a portable music player.</li> <li>- Ensure no loose objects are touching the speaker.</li> </ul>

## Specifications

### General

Model number	AC411
Connection type	Bluetooth 3.0
Supported operating systems	Microsoft Windows 7 SP1 or later, Windows 8

### Electrical

Operating voltage	18V
Operating current	2.5A
Output power	7W+7W +15W continuous RMS power @ $\leq 10\%$ THD

### Physical Characteristics

Woofer: Height Length Width	Height = 141 mm Length = 150 mm Width = 150 mm
Line in cable length	200 mm
Remote control L*W*H	70*70*17.5 mm
Adapter cable	179 mm
Cable on the remote control	200 mm
Weight	2124 g

### Environmental

Operating temperature	0 °C to 40 °C
Storage temperature	-40 °C to 65 °C
Operating humidity	90% maximum relative humidity, non condensing
Storage humidity	90% maximum relative humidity, non condensing

### Bluetooth 3.0

Radio transmission	The baseband transmit data is GFSK Modulated in the 2.4 GHz ISM band
Range	Up to 10m radio range. No performance degradation up to max radio range (10 m)

## Statutory Information

### Warranty

#### Limited Warranty and Return Policies

Dell-branded products carry a 1-year limited hardware warranty.

If purchased together with a Dell system, it will follow the system warranty.

#### **For U.S. customers:**

This purchase and your use of this product are subject to Dell's end user agreement, which you can find at <http://www.dell.com/terms>. This document contains a binding arbitration clause.

#### **For European, Middle Eastern and African customers:**

Dell-branded products that are sold and used are subject to applicable national consumer legal rights, the terms of any retailer sale agreement that you have entered into (which will apply between you and the retailer) and Dell's end user contract terms. Dell may also provide an additional hardware warranty – full details of the Dell end user contract and warranty terms can be found by going to <http://www.dell.com/>, selecting your country from the list at the bottom of the "home" page and then clicking the "terms and conditions" link for the end user terms or the "support" link for the warranty terms.

#### **For non-U.S. customers:**

Dell-branded products that are sold and used are subject to applicable national consumer legal rights, the terms of any retailer sale agreement that you have entered into (which will apply between you and the retailer) and Dell's warranty terms. Dell may also provide an additional hardware warranty – full details of Dell's warranty terms can be found by going to [www.dell.com](http://www.dell.com), selecting your country from the list at the bottom of the "home" page and then clicking the "terms and conditions" link or the "support" link for the warranty terms.

## Regulatory

Dell Bluetooth Speakers Model: AC411

### Regulatory Information

Warning: Changes or modifications on this unit are not expressly approved by the party responsible for compliance which could void the user's authority to operate the equipment.

This equipment has been tested and found to comply with the limits for a Class B digital device, pursuant to Part 15 of the FCC Rules. These limits are designed to provide reasonable protection against harmful interference in a residential installation. This equipment generates uses and can radiate radio frequency energy and, if not installed and used in accordance with the instructions, may cause harmful interference to radio communications.

However, there is no guarantee that interference will not occur in a particular installation. If this equipment does cause harmful interference to radio or television reception, which can be determined by turning the equipment off and on, the user is encouraged to try to correct the interference by one or more of the following measures:

- Reorient or relocate the receiving antenna.
- Increase the separation between the equipment and receiver.
- Connect the equipment into an outlet on a circuit different from that to which the receiver is connected.
- Consult the dealer or an experienced radio/TV technician for help.

Shielded cables must be used with this unit to ensure compliance with the Class B FCC limits.

### Agency Approval

Argentina CNC, Australia & New Zealand C-Tick, Brazil ANATEL, Brunei Darussalam AITI, Canada CUL or CSA, Chile SUBTEL, China CCC SRRC(MIIT), Egypt NTRA, Germany TUV-GS, India WPC, Indonesia DGPT, Israel MOC, Japan MIC VCCI, Kazakhstan TELSET, Kenya CCK, Malaysia SIRIM, Mexico COFETEC NOM, Morocco ANRT, Nigeria NCC Son cap, Philippines NTC, Qatar ict QATAR, Russian Federation FAC CU, Saudi Arabia CTIC+SASO, Serbia TELEKOM Kvalitet, Singapore IDA, South Africa ICASA SABS(COC) NRCS(LOA), Korea, Taiwan NCC+BSMI, Thailand NBTS, Ukraine UKRSEPRO COC+DOC, United Arab Emirates TRA, United States FCC CUL us, Vietnam MIC, Europe CE CB.

[Back to Contents Page](#)

## Certifications

### Microsoft WHQL Logo

The Dell Bluetooth Speakers has passed WHQL logo testing by Microsoft Windows Hardware Quality Labs.

WHQL Logo is a certification scheme operated by Microsoft Windows Hardware Quality Labs. In this case it ensures that hardware is compatible with Microsoft Operating Systems. The speaker is qualified through the use of WHQL test kits and has been included in the **Microsoft Hardware Compatibility list**.