

| Latitude™ | Z

Setup and Features Information

FILE LOCATION: C:\Partha\Test\A6_tp.fm

DELL CONFIDENTIAL – PRELIMINARY 2/6/09 – FOR PROOF ONLY

| P01L



Notes, Cautions, and Warnings



NOTE: NOTE indicates important information that helps you make better use of your computer.



CAUTION: A CAUTION indicates potential damage to hardware or loss of data if instructions are not followed.



WARNING: A WARNING indicates a potential for property damage, personal injury, or death.

Information in this document is subject to change without notice.
© 2009 Dell Inc. All rights reserved.

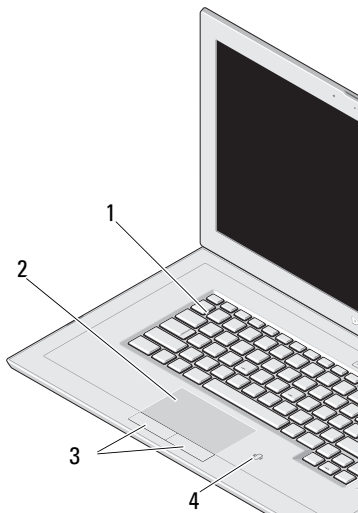
Reproduction of these materials in any manner whatsoever without the written permission of Dell Inc. is strictly forbidden.

Trademarks used in this text: *Dell*, the *DELL* logo, Latitude On, and Latitude are trademarks of Dell Inc.; *Intel* is a registered trademark and *Core* is a trademark of Intel Corporation in the U.S. and other countries; *ENERGY STAR* is a registered trademark of the U.S. Environmental Protection Agency.

Other trademarks and trade names may be used in this document to refer to either the entities claiming the marks and names or their products. Dell Inc. disclaims any proprietary interest in trademarks and trade names other than its own.

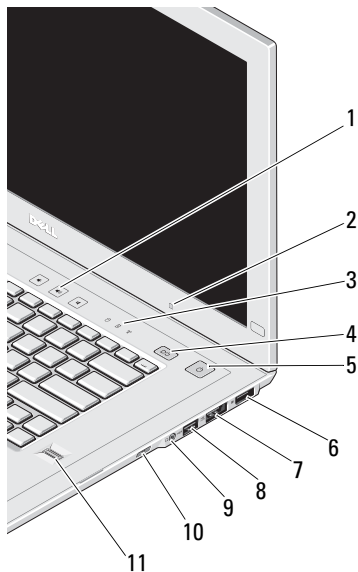
About Your Computer

Front View



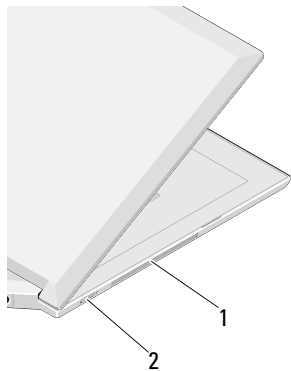
- 1 keyboard
- 2 touch pad
- 3 touch pad buttons (2)
- 4 contactless smart-card reader

Right View



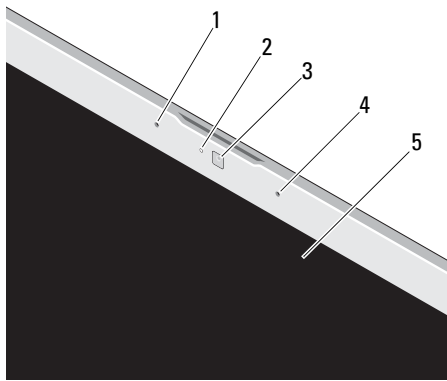
- 1 volume controls
- 2 ambient light sensor
- 3 device status lights
- 4 Latitude On™ button
- 5 power button/power light
- 6 DisplayPort
- 7 eSATA connector
- 8 USB connector
- 9 audio connector
- 10 wake-up switch
- 11 fingerprint reader

Left View



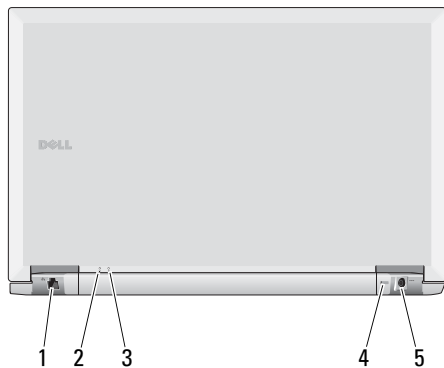
- 1 air vents
- 2 wireless switch

Display Features



- 1 Left digital array microphone (optional)
- 2 Camera activity indicator (optional)
- 3 Camera (optional)
- 4 Right digital array microphone (optional)
- 5 Display

Back View



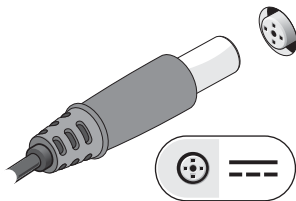
- 1 network connector
- 2 power indicator
- 3 battery indicator
- 4 security cable slot
- 5 AC adapter connector

Quick Setup

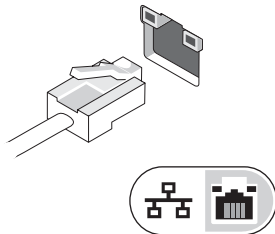


WARNING: Before you begin any of the procedures in this section, read the safety information that shipped with your computer. For additional best practices information see www.dell.com/regulatory_compliance.

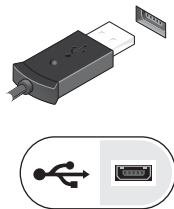
- 1 Connect the AC adapter to the power connector on the computer and to the electrical outlet.



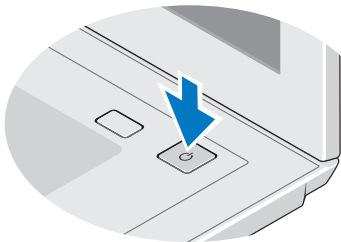
- 2 Connect the network cable (not included).



- 3 Connect the USB devices, such as a mouse or keyboard (optional).



- 4 Open the computer display and press the power button to turn on the computer.



NOTE: It is recommended that you turn on and shutdown the computer at least once before you install any cards or connect the computer to a docking device or an external device like a printer for the first time.

Specifications



NOTE: Some devices may not be included if you did not order them. For more information regarding the configuration of your computer, click **Start**→ **Help and Support** and select the option to view information about your computer.

Processor

Type	Intel® Core™2 Duo Ultra Low Voltage processor
Level 2 cache	3 MB
Front side bus	800 MHz

System Information

System chipset	Mobile Intel GS45 Express Chipset
Data bus width	64 bits
DRAM bus width	dual-channel (2) 64-bit
Processor address bus width	36 bits

Video

Type	integrated on the system board
Data bus	integrated video
Video controller	Intel Graphics Media Accelerator
Video memory	up to 256 MB (shared)

Battery

Type	“smart” Lithium ion 4-cell 40 WHr 8-cell 80 WHr
Dimensions	
4-cell battery	Depth — 36.11 mm Height — 20.10 mm Weight — 250.6 g
8-cell battery	Depth — 57.31 mm Height — 21.00 mm Weight — 475.7 g
Voltage	
4-cell battery	14.8 VDC
6-cell and 9-cell battery	11.1 VDC
Temperature range	
Operating	0° to 35° C (32° to 95°F)
Storage	-40° to 60° C (-40° to 145°F)

Coin-cell battery	CR2032
-------------------	--------

AC Adapter

Input voltage	100–240 VAC
Input current (maximum)	1.5 A
Input frequency	50–60 Hz
Output current	
45 W AC adapter	2.31 A
Output power	45 W
Rated output voltage	19.5 VDC
Dimensions	
45 W AC adapter	Height — 16 mm Width — 50 mm Depth — 90 mm
Temperature range	
Operating	0° to 40° C (32° to 104°F)
Storage	-40° to 70° C (-40° to 158°F)

Physical

Height

four cell	20.10 mm
eight cell	21.00 mm

Width 396.34 mm

Depth

four cell	272.25 mm
eight cell	293.43 mm

Weight

with 4-cell battery, with single SSD, HD+ and no camera and mic	2.0 Kg
--	--------

with 8-cell battery, with
single SSD, HD+ and no
camera and mic 2.22 Kg

Environmental

Temperature range

Operating	0° to 35° C (32° to 95°F)
Storage	-40° to 65° C (-40° to 149°F)

Relative humidity
(maximum)

Operating	10%–90% (non condensing)
Storage	5%–95% (non condensing)

Altitude (maximum)

Operating	-5.2 to 3048 m
Storage	-15.2 to 10,668 m

Airborne contaminant
level

G2 or lower as defined by
ISA-S71.04-1985

Finding Information

If you need to find:

Complete information regarding the configuration of your computer or replace parts

Safety best practices information for your computer

Warranty information

Terms and conditions of sale

Regulatory information

Ergonomics information

End user license agreement

See:

The *Service Manual* on the Dell Support website at **support.dell.com**.

The safety and regulatory documents that shipped with your computer and the regulatory compliance homepage at **www.dell.com/regulatory_compliance**.

