




Dell Storage Center Update Utility Administrator's Guide



Notes, Cautions, and Warnings

-  **NOTE:** A NOTE indicates important information that helps you make better use of your computer.
-  **CAUTION:** A CAUTION indicates either potential damage to hardware or loss of data and tells you how to avoid the problem.
-  **WARNING:** A WARNING indicates a potential for property damage, personal injury, or death.

Contents

About This Guide.....	4
Revision History.....	4
Audience.....	4
Contacting Dell.....	4
1 Storage Center Update Utility.....	5
Application Overview.....	5
System Requirements.....	5
System Preparation.....	5
Download and Install the SCUU.....	5
Configure Dell SupportAssist Settings.....	5
Install the Storage Center Update Utility.....	6
Update Storage Center Software Using a Distro Directory.....	7
Update Storage Center Software Using a Distro File.....	8



About This Guide

This guide describes how to update your storage system using the Storage Center Update Utility (SCUU).

The SCUU is used to update Storage Centers that cannot connect to the Dell SupportAssist server. The SCUU updates the Storage Center Operating System and firmware on any storage system running software version 6.6.5 or later.

Revision History


Document Number: 680-118-002

Table 1. Document Revision History

Revision	Date	Description
A	May 2016	Initial release in support of Storage Center OS Version 7
B	April 2017	Feature release to address distribution types

Audience

The information provided in this guide is intended for users who cannot use the Dell SupportAssist functionality to perform Storage Center updates.

 **CAUTION: Recovery of Storage Center software or system state is not possible without support assistance. Dell recommends backing up the system before initiating any updates.**

Contacting Dell

Dell provides several online and telephone-based support and service options. Availability varies by country and product, and some services might not be available in your area.

To contact Dell for sales, technical support, or customer service issues, go to www.dell.com/support.

- For customized support, enter your system service tag on the support page and click **Submit**.
- For general support, browse the product list on the support page and select your product.

Storage Center Update Utility

The Storage Center Update Utility (SCUU) is a Windows application that provides updates to the Dell Storage Center Operating System on your storage system. The SCUU makes the Storage Center distribution or *distro* available to the Storage Center. The distro contains updates to the Storage Center Operating System and other Storage Center firmware.

 **NOTE: Dell Storage Center OS Version 7 and later is managed using the Dell Storage Manager user interface. After using the Storage Center Update Utility to update the Storage Center OS, use Storage Manager to maintain the storage system. For more information, see the *Dell Storage Manager Administrator's Guide*.**

Application Overview

Review the following guidelines before downloading and installing the Storage Center Update Utility (SCUU).

System Requirements

- The SCUU only supports updating software on storage systems running Storage Center Operating System version 6.6.5 or later.
- The SCUU runs on Windows 7, 8, and 8.1; Windows Server 2008 R2, and Windows Server 2012 R2.
- The SCUU requires .NET Framework version 4.5 or later.

System Preparation

The inbound TCP port needs to be open to allow the SCUU to serve updates. Use either of the following methods to open the inbound TCP port:

- Open the inbound TCP port in the Windows firewall. (The default port is 9005).
- In the **SCUU Preferences** window, select **Automatically configure Windows Firewall to allow port traffic**.

Download and Install the SCUU

1. Download a copy of the SCUU and the update distro from the Dell support website at www.dell.com/support.
2. Unzip the distro into a location accessible by the SCUU. Dell recommends the location: `c:\Dell\SCUU`
3. Install the SCUU software in the default installation location according to the instructions in [Install the Storage Center Update Utility](#).

Configure Dell SupportAssist Settings

To allow the SCUU to communicate with the Storage Center and serve updates, connect to the Storage Center using the Dell Storage Manager Client and configure the Dell SupportAssist settings.

1. Click the **Storage** tab.
2. In the **Storage** pane, select the Storage Center to modify.
3. In the right pane, click **Edit Settings**. The **Edit Storage Center Settings** dialog box opens.
4. Click the **Dell SupportAssist** tab.
5. Click **Turn Off SupportAssist**.

 **NOTE: The following options are only available when Dell SupportAssist is disabled.**

6. Under the Configure Update Utility for updating Storage Center text, select **Enabled**.
7. In the **Update Utility Host or IP Address** field, enter the host name or IP address of the Storage Center Update Utility.
8. In the **Update Utility Port** field, enter the port of the Storage Center Update Utility. The default port is 9005.
9. Click **OK**.



For more information, see the *Dell Storage Manager Administrator's Guide*.

Install the Storage Center Update Utility

Download the SCUU and a Storage Center update distro from the Dell support website at www.dell.com/support.

Prerequisites

NOTE: Install the SCUU on a computer that is on the same network as the Storage Center that you want to update. For new Storage Center installations, install the SCUU software before running the storage system setup wizard.

Steps

1. To start the installation, double-click the **ScuuSetup-1.xx.xx.xx.exe** file.
2. If prompted, allow the installation program to install the SCUU.

The SCUU is installed in the `C:\Program Files (x86)\Dell\Storage Center Update Utility\` folder.

The **Preferences** dialog box opens for new SCUU installations.

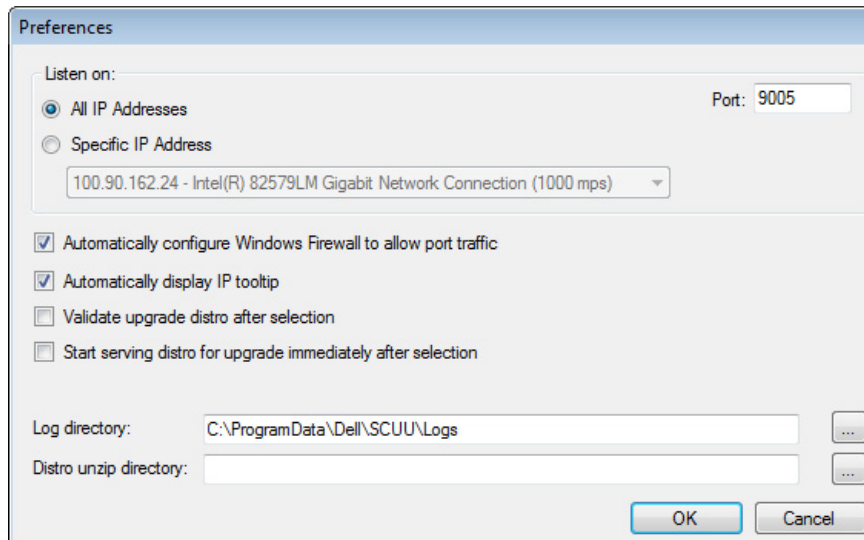


Figure 1. Storage Center Update Utility Preferences Dialog Box

Specify the following information in the **Preferences** dialog box:

- IP address on which the SCUU listens for update requests. You can specify a specific address, or listen on all IP addresses.
- Port through which the SCUU communicates.
- Directory to store the logs.
- Directory where the distros will be unzipped.

3. (Optional) Select **Validate upgrade distro after selection** to have the SCUU validate each distro when it is opened in the main SCUU window.

NOTE: If **Validate upgrade distro after selection** is not selected, the distro is still validated when the upgrade service is started.

4. (Option) Select **Start serving distro for upgrade immediately after selection** to have the SCUU start the hosting service automatically after the selection of a distro.

Next steps

NOTE: The firewall must be disabled on the inbound TCP port to allow the SCUU to provide updates to the Storage Center. To disable the firewall to allow inbound TCP port traffic, select **Automatically configure Windows Firewall to allow port traffic** in the Preferences dialog box.

Update Storage Center Software Using a Distro Directory

Use these instructions to update Storage Center software using a distro directory.

Prerequisites

CAUTION: Recovery of Storage Center software or system state is not possible without assistance from Dell Technical Support. Dell recommends backing up the system before performing a Storage Center software update.

Steps

1. Start the SCUU.

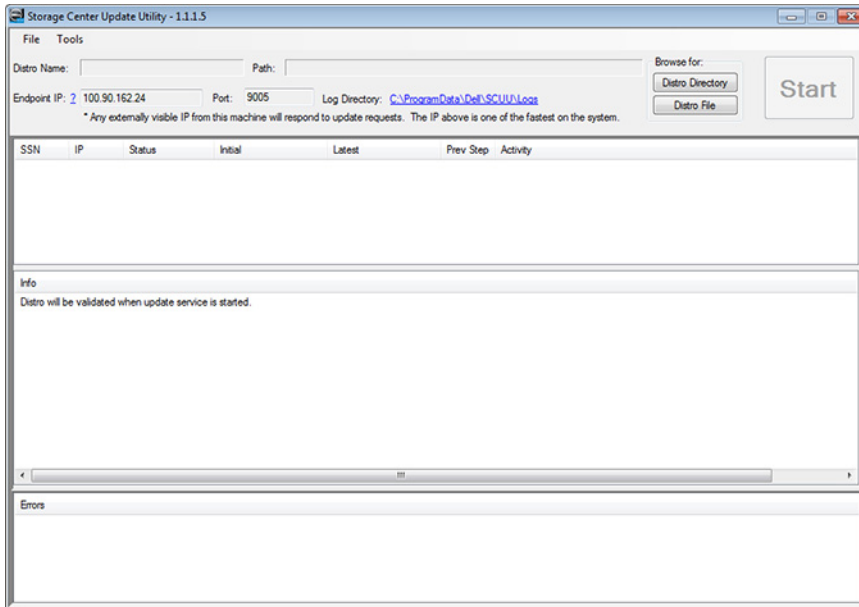


Figure 2. Storage Center Update Utility

2. Click **Distro Directory**. The **Browse For Folder** dialog box opens.
3. Select the folder that contains the distro.
4. Click **OK**.
If **Validate upgrade distro after selection** is selected in the **Preferences** dialog box, the SCUU displays a progress message on the main window while the distro is validated. If the distro is valid, the **Start** button turns green and the message `Distro successfully validated` appears in the **Info** pane.
5. If **Start serving distro for upgrade immediately after selection** is selected in the **Preferences** dialog box, the hosting service is started automatically. If not, click **Start**.
The SCUU hosts the update to the Storage Center, which allows the Storage Center to download the update.
6. (Optional) If you want to stop the update service, click **Stop**.
If any update sessions are in progress, a warning appears before the SCUU stops the update service.
7. After starting the SCUU, use the Dell Storage Manager Client to check for updates.
 - a. Connect directly to the Storage Center or connect to a Data Collector and select the Storage Center to update from the **Storage** pane.
 - b. In the right pane, select **Actions** → **System** → **Check for Update**.For more information about using Storage Manager, see the *Dell Storage Manager Administrator's Guide*.



Update Storage Center Software Using a Distro File

Use these instructions to update Storage Center software using a distro ZIP file.

Prerequisites

CAUTION: Recovery of Storage Center software or system state is not possible without assistance from Dell Technical Support. Dell recommends backing up the system before performing a Storage Center software update.

Steps

1. Start the SCUU.

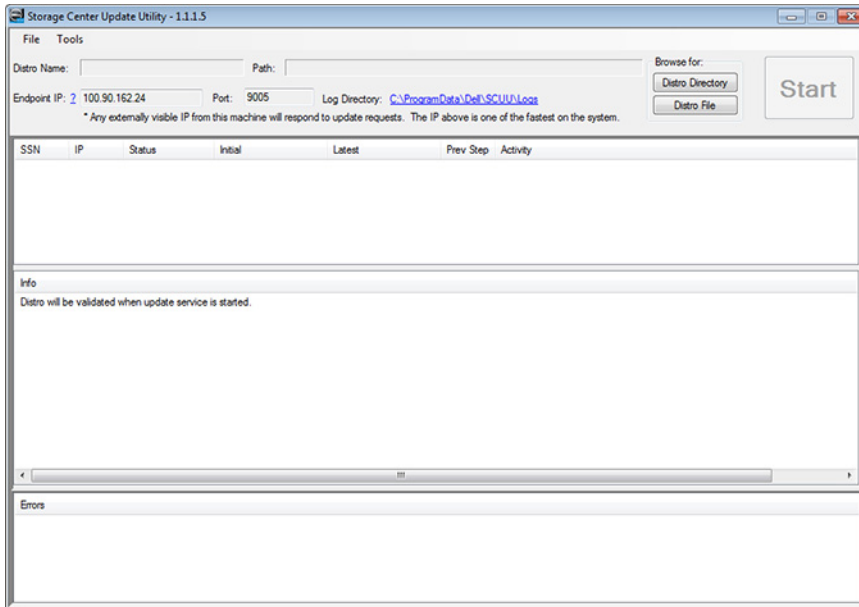


Figure 3. Storage Center Update Utility

2. Click **Distro File**.
3. Locate and select the distro ZIP file, and then click **Open**.
The SCUU performs the following actions:
 - SCUU extracts the ZIP file to the directory specified in the **Preferences** dialog box.
 - SCUU opens the distro.
 - If **Validate upgrade distro after selection** is selected in the **Preferences** dialog box, the SCUU displays a progress message on the main window while the distro is validated. If the distro is valid, the **Start** button turns green and the message `Distro successfully validated` appears in the **Info** pane.
4. If **Start serving distro for upgrade immediately after selection** is selected in the **Preferences** dialog box, the hosting service is started automatically. If not, click **Start**.
SCUU now responds to update requests from Storage Centers.
5. (Optional) To stop the update service, click **Stop**.
If any update sessions are in progress, a warning appears before the SCUU stops the update service.
6. After starting the SCUU, use the Dell Storage Manager Client to check for updates.
 - a. Select a Storage Center from the **Storage** view. (Data CollectorData Collector connected Dell Storage Client only)
 - b. In the right pane, select **Actions** → **System** → **Check for Update**.

For more information about using Storage Manager, see the *Dell Storage Manager Administrator's Guide*.