

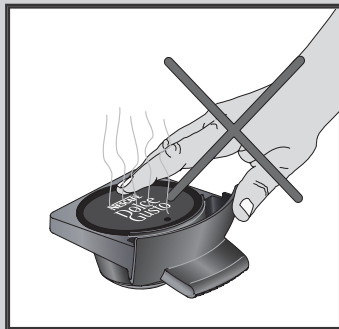
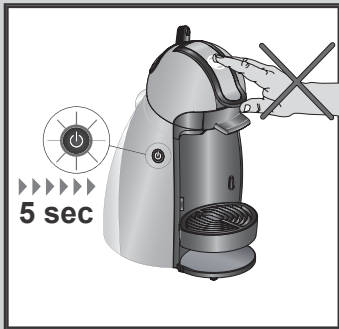
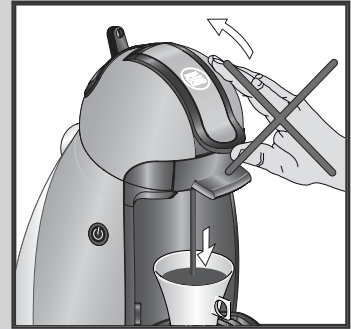
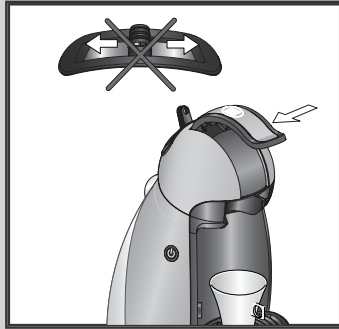
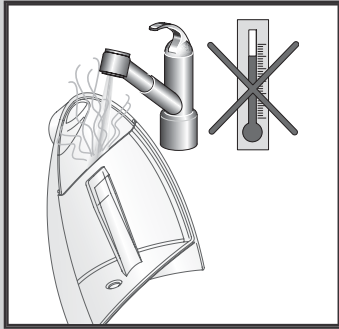


- NO Fremstille en drikk
- SV Förbereda dryck
- FI Juoman valmistus
- DA Tilberedning af drik
- ES Preparación de una bebida

- IT Preparazione delle bevande
- FR Préparation d'une boisson
- DE Getränkezubereitung
- EN Preparing a beverage

NESCAFÉ
Dolce
Gusto





- NO** Strømsparemodus
- SV** Energisparläge
- FI** Ekonominen tila
- DA** Økonomi-mode
- ES** Modo Económico

- IT** Modalità Eco
- FR** Mode Eco
- DE** Stromsparmodus
- EN** Economy mode

NESCAFÉ
Dolce
Gusto





- NO Rengjøring
- SV Rengöring
- FI Puhdistus
- DA Rengøring
- ES Limpieza

- IT Pulizia
- FR Nettoyage
- DE Reinigung
- EN Cleaning

NESCAFÉ
Dolce
Gusto



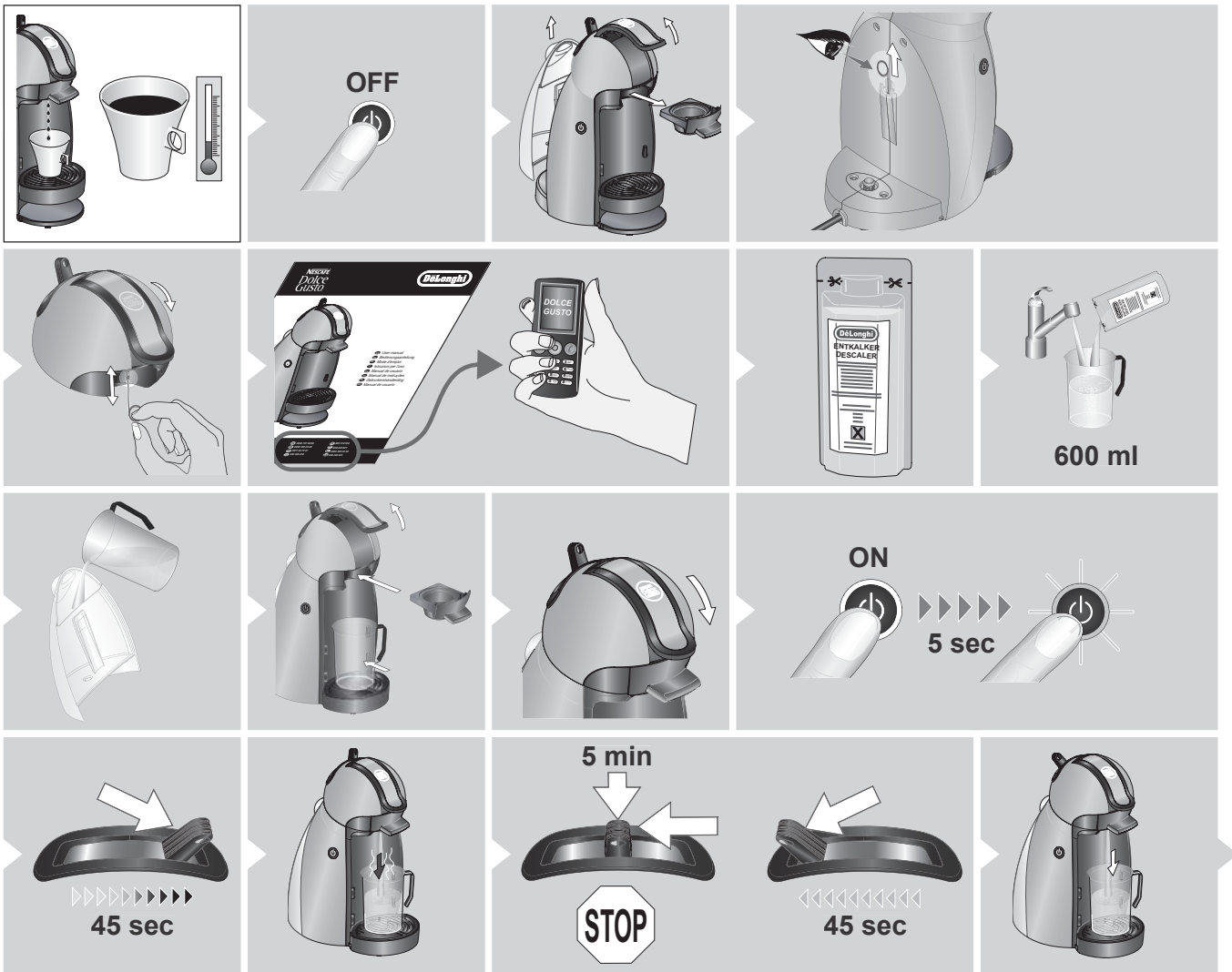


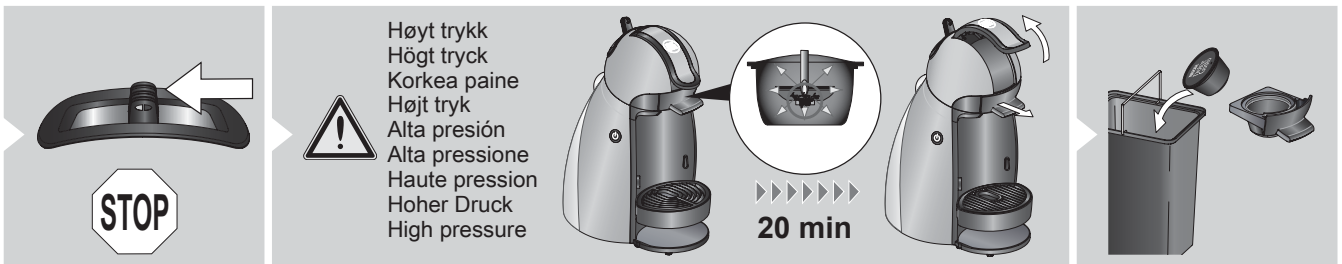
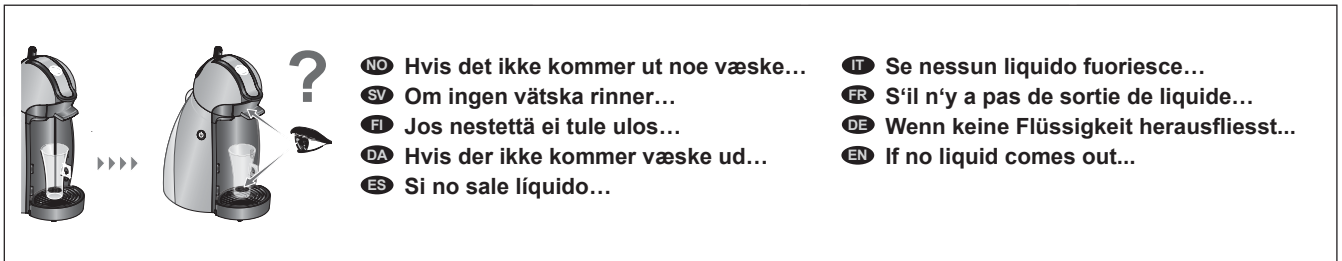
De'Longhi
Entkalker / Descaler

- NO** Avkalking hver 3.-4. måned
- SV** Avkalkning var 3-4 månad
- FI** Kalkinpoisto 3-4 kuukauden välein
- DA** Afkalkning hver 3.-4. måned
- ES** Descalcificación cada 3-4 meses

- IT** Decalcificazione ogni 3-4 mesi
- FR** Détartrage tous les 3-4 mois
- DE** Entkalkung alle 3-4 Monate
- EN** Descaling every 3-4 months

NESCAFÉ
Dolce
Gusto







- NO** Feilsøking
- SV** Felsökning
- FI** Vianmäärittys
- DA** Problemløsning
- ES** Resolución de problemas

- IT** Guasti
- FR** Dépannage
- DE** Störungsbehebung
- EN** Troubleshooting

NESCAFÉ
Dolce Gusto

<p>röd punainen rød rojo rosso en rouge red rot</p>	<p>OFF ON </p> <p>10-15 min</p>			