

# Bluetooth Module

## Quick Installation Guide

### FCC Statement

*This equipment complies with FCC radiation exposure limits set forth for an uncontrolled environment. End users must follow the specific operating instructions for satisfying RF exposure compliance. This transmitter must not be co-located or operating in conjunction with any other antenna or transmitter. [Notice: Any changes or modification not expressly approved by the party responsible could void the user's authority to operate the device.](#)*

*This device complies with part 15 of the FCC Rules. Operation is subject to the following two conditions: (1) This device may not cause harmful interference, and (2) this device must accept any interference received, including interference that may cause undesired operation.*

### Product Introduction

The Bluetooth Module allows a computer with a USB port to communicate with other Bluetooth-enabled devices. When used with the Bluetooth application software, it can perform wireless network applications such as information exchange, file transfer, network access, dial-up networking, headset, audio gateway, printer application, and so on.

### Package Contents

- Installation CD ROM
- Bluetooth Module interface USB
- Quick Installation Guide

### System Requirements

- IBM compatible PC with Pentium, Celeron™ processor or equivalent CPU or higher.
- RAM 64M or above
- Screen: 800\*600 or above
- Display: adapter True Color 16bits or above.
- Microsoft® Windows® 98SE/ME/2000/XP

### Installation Steps

**Step 1:** Uninstall previous version of BlueSoleil, IVT BSS or MiniBluelet. If a previous version of BlueSoleil, IVT BSS or MiniBluelet has been installed, it is recommended to uninstall it first and restart the computer before installation. You can use uninstall tools "uninstall.exe" in the installation package.

**Step 2: Insert the Installation software CD into the CD-ROM of your machine.**



Figure 1 insert Installation CD

**Step 3: Launch the Setup.exe program in the installation CD ROM. In normal cases, you can follow the instructions to finish the software installation.**

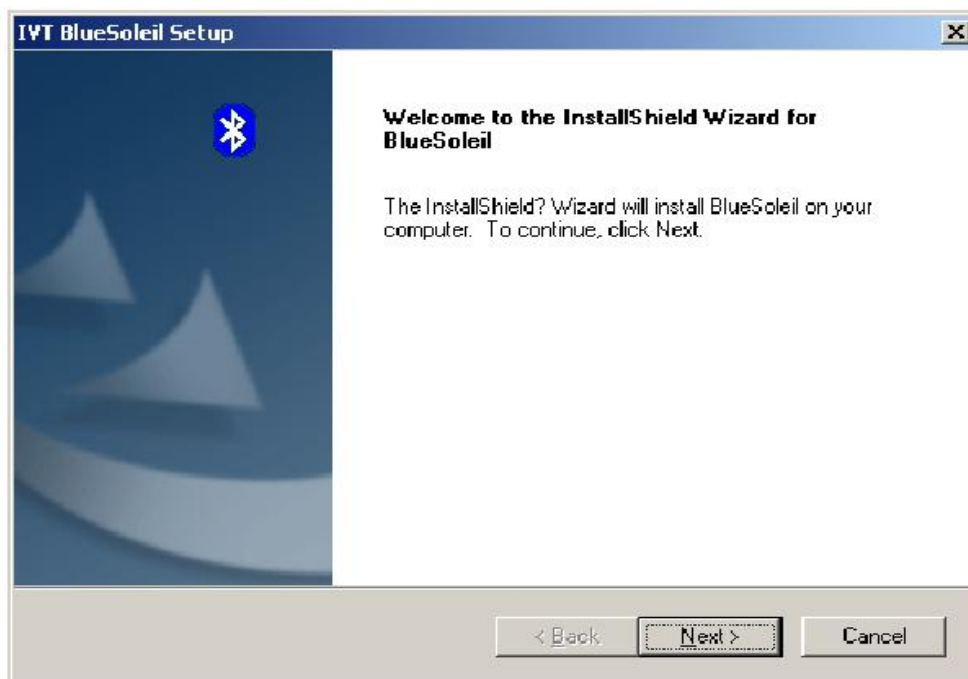


Figure 2 set up IVT BlueSoleil

**Step 4: Restart the Computer. After the BlueSoleil software package is installed, you will need to restart the computer. This is to make sure that the installed Bluetooth Device takes effect.**

**Step 5: After you reboot your desktop or laptop, you can find that the BlueSoleil shortcut icon.**



**is displayed on your Windows desktop.**

## **Note:**

1. For Windows 98 and Windows ME, the Dial-up Adapter and Windows's component direct cable connection and NETBEUI protocol needs to be installed to run the Dial-up Networking profile and LAN access profile.
2. You need configure Bluetooth Network Adapter IP to run PAN profile.
3. More details on how to use IVT BlueSoleil, please refer to Online Help, User Manual and any other support document.
4. If some system exceptions occur during the installation, please use uninstall.exe in the installation package to remove the remains of BlueSoleil before installing again.

## **Notice On Windows 98SE/ME**

### **Expected Outcome**

1. Installed Files & Directories (by default):
  - <Windows program files>\IVT Corporation\BlueSoleil BlueSoleil execution and support files.
  - <Current user>\My Documents\Bluetooth Support directory. This is the directory for Object Push and Synchronization. Received cards and other objects will be put here.
2. Installed Devices:
  - 6 Bluelet virtual COM ports
  - 3 Bluelet virtual Modem
  - BT Network Adapter
  - HID device

## **Notice On Windows 2000/XP**

### **Expected Outcome:**

1. Installed Files & Directories (by default):
  - <Windows program files>\IVT Corporation\BlueSoleil BlueSoleil execution and support files.
  - <Current user>\My Documents\Bluetooth Support directory. This is the directory for Object Push and Synchronization. Received cards and other objects will be put here.
2. Installed Devices:
  - 11 Bluelet virtual COM ports
  - 1 Vcomm Manager
  - 3 Bluelet virtual Modem
  - 1 BT Network Adapter
  - 1 Bluetooth HID Enum Device
  - 1 HID Device Manager

**This equipment has been tested and found to comply with the limits for a Class B digital device, pursuant to Part 15 of FCC Rules. These limits are designed to provide reasonable protection against harmful interference in a residential installation. This equipment generates, uses, and can radiate radio frequency energy. If not installed and used in accordance with the instructions, it may cause harmful interference to radio communications. However, there is no guarantee that interference will not occur in a particular installation.**

**If this equipment does cause harmful interference to radio or television reception, which can be determined by tuning the equipment off and on, the user is encouraged to try and correct the interference by one or more of the following measures:**

- Reorient or relocate the receiving antenna**
- Increase the distance between the equipment and the receiver.**
- Connect the equipment to outlet on a circuit different from that to which the receiver is connected.**
- Consult the dealer or an experienced radio/TV technician for help.**

**TO OEM installer:**

- 1. FCC ID label on the final system must be labeled with "Contains FCC ID: H79DFBM-CE321" or "Contains transmitter module FCC ID:H79DFBM-CE321".**
- 2. In the user manual, final system integrator must be ensure that there is no instruction provided in the user manual to install or remove the transmitter module.**
- 3. Transmitter module must be installed and used in strict accordance with the manufacturer's instructions as described in the user documentation that comes with the product. This device complies with the following radio frequency and safety standards.**

**The user manual of the final host system must contain the following statements:**

**USA-Federal Communications Commission (FCC)**

**This equipment has been tested and found to comply with the limits for a Class B digital device, pursuant to Part 15 of FCC Rules. These limits are designed to provide reasonable protection against harmful interference in a residential installation. This equipment generates, uses, and can radiate radio frequency energy. If not installed and used in accordance with the instructions, it may cause harmful interference to radio communications. However, there is no guarantee that interference will not occur in a particular installation.**

**If this equipment does cause harmful interference to radio or television reception, which can be determined by tuning the equipment off and on, the user is encouraged to try and correct the interference by one or more of the following measures:**

- Reorient or relocate the receiving antenna**
- Increase the distance between the equipment and the receiver.**
- Connect the equipment to outlet on a circuit different from that to which the receiver is connected.**
- Consult the dealer or an experienced radio/TV technician for help.**

**Any changes or modifications not expressly approved by the party responsible for compliance could void the user's authority to operate the equipment.**

**This device complies with Part 15 of the FCC Rules. Operation is subject to the following two conditions: (1) this device may not cause harmful interference, and (2) this device must accept any interference received, including interference that may cause undesired operation.**

**Any changes or modifications not expressly approved by the party responsible for compliance could void the user's authority to operate the equipment.**

**Caution: Exposure to Radio Frequency Radiation.**

**This device must not be co-located or operating in conjunction with any other antenna or transmitter.**