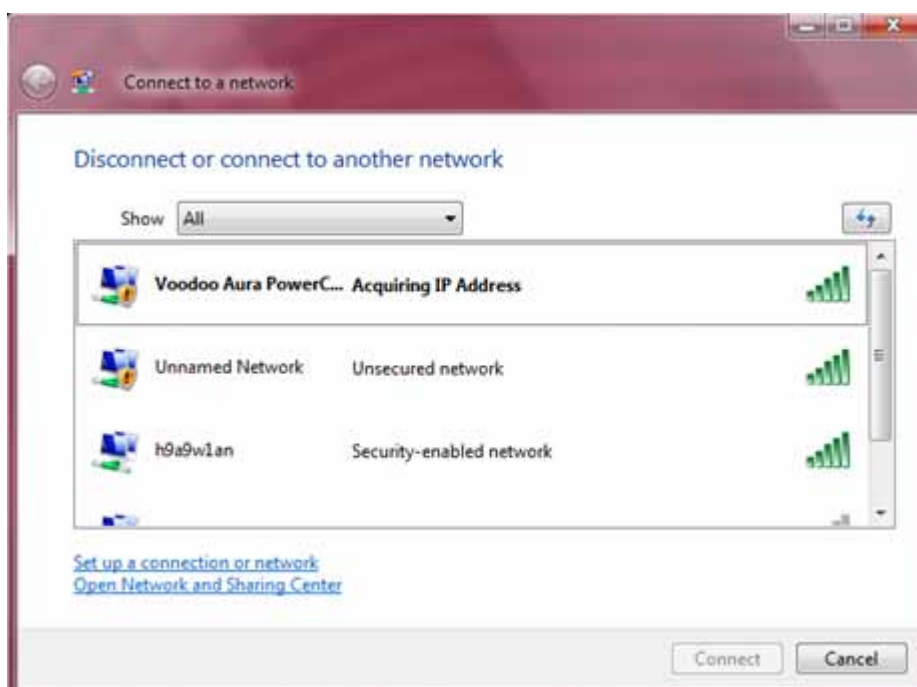


## PAW (Power And Wireless) INITIAL SET-UP

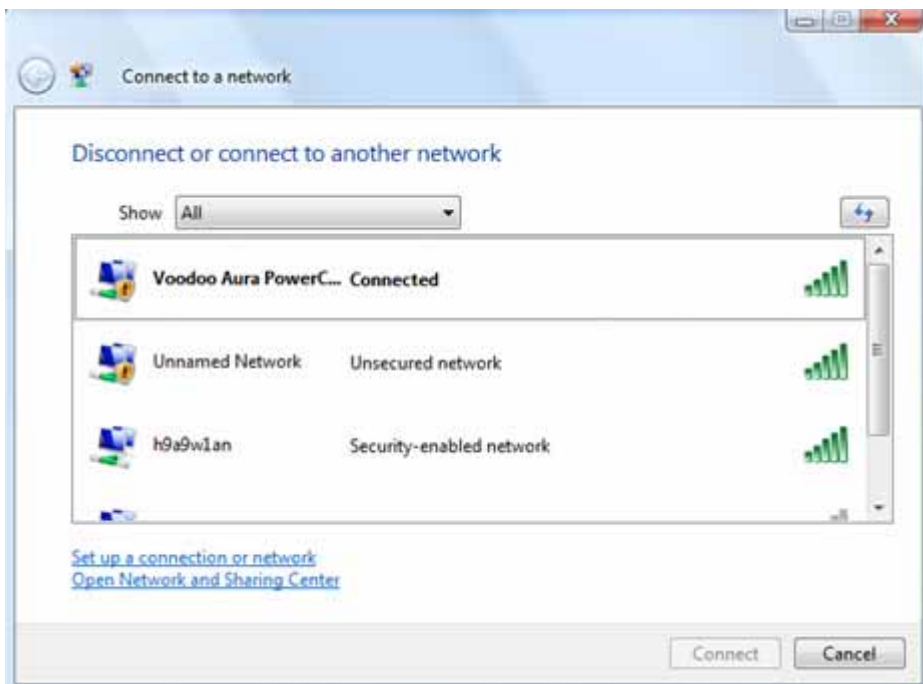
1. Plug PAW (no RJ-45 cable connected yet). Wait approx 40 seconds to turn On the wireless AP. Voodoo logo blinks once.
2. Turn On and log into your Envy notebook.
3. Envy Notebook broadcasts an active request with “Voodoo Aura PowerConnect” network name.
4. Envy Notebook will not see PAW yet because AP’s RF is Off when no RJ-45 cable is connected into PAW.



5. Now, plug the RJ-45 cable into Ethernet LAN and PAW. Voodoo logo blinks at fixed frequency (approx 1Hz)
6. Hit a SYNC button of the PAW for at least 1 sec. Voodoo logo blinks 3 times.
7. PAW receives the active request from Envy Notebook with “Voodoo Aura PowerConnect” network name.



7. Envy Notebook is now connected to PAW. Voodoo logo blinks based on wireless activity when user connects to internet.



## Federal Communication Commission Interference Statement

This equipment has been tested and found to comply with the limits for a Class B digital device, pursuant to Part 15 of the FCC Rules. These limits are designed to provide reasonable protection against harmful interference in a residential installation. This equipment generates, uses and can radiate radio frequency energy and, if not installed and used in accordance with the instructions, may cause harmful interference to radio communications. However, there is no guarantee that interference will not occur in a particular installation. If this equipment does cause harmful interference to radio or television reception, which can be determined by turning the equipment off and on, the user is encouraged to try to correct the interference by one of the following measures:

- Reorient or relocate the receiving antenna.
- Increase the separation between the equipment and receiver.
- Connect the equipment into an outlet on a circuit different from that to which the receiver is connected.
- Consult the dealer or an experienced radio/TV technician for help.

FCC Caution: Any changes or modifications not expressly approved by the party responsible for compliance could void the user's authority to operate this equipment.

This device complies with Part 15 of the FCC Rules.

Operation is subject to the following two conditions: (1) This device may not cause harmful interference, and (2) this device must accept any interference received, including interference that may cause undesired operation.

This device and its antenna(s) must not be co-located or operating in conjunction with any other antenna or transmitter.

Country Code selection feature to be disabled for products marketed to the US/CANADA

### **IMPORTANT NOTE:**

#### **FCC Radiation Exposure Statement:**

This equipment complies with FCC/IC RSS-102 radiation exposure limits set forth for an uncontrolled environment. This equipment should be installed and operated with minimum distance 20cm between the radiator & your body.

This Class [B] digital apparatus complies with Canadian ICES-003.

Cet appareil numérique de la classe [B] est conforme à la norme NMB-003 du Canada.