

Introduction

Thank you for purchasing the Belkin Wireless G Router (the Router). Below are two short sections, one discusses the benefits of home networking, the other outlines best practices in order to maximize your wireless home network range and performance. Please be sure to read through this User Manual completely, and pay special attention to the section on entitled “Placement of your Wireless Networking Hardware for Optimal Performance” on the next page. By following our simple setup instructions your Belkin Home Network will allow you to:

- Share one high-speed Internet connection with all the computers in your home
- Share resources, such as files, and hard drives among all the connected computers in your home
- Share a single printer with the entire family
- Share documents, music, video, and digital pictures
- Store, retrieve, and copy files from one computer to another
- Simultaneously play games online, check Internet e-mail, and chat

Here are some of the advantages of setting up a Belkin Wireless Network:

Mobility – you’ll no longer need a dedicated “computer room”— now you can work on a networked laptop or desktop computer anywhere within your wireless range

Easy installation – Belkin’s Easy Installation Wizard makes setup simple

Flexibility – set up and access printers, computers, and other networking devices from anywhere in your home

Easy Expansion – the wide range of Belkin networking products let you expand your network to include devices such as printers and gaming consoles

No cabling required – you can spare the expense and hassle of retrofitting Ethernet cabling throughout the home or office

Widespread industry acceptance – choose from a wide range of interoperable networking products

Placement of your Wireless G Router

Important Factors for Placement and Setup

Your wireless connection will be stronger the closer your computer is to your Wireless Router or Access Point. Typical indoor operating range for your wireless devices is between 100 and 200 feet. In the same way, your wireless connection and performance will degrade somewhat as the distance between your Wireless Router or Access Point connected devices increases. This may or may not be noticeable to you. As you move further from your Wireless Router or Access Point, connection speed may decrease. Factors that can weaken signals simply by getting in the way of your network's radio waves are metal appliances or obstructions, and walls.

If you have concerns about your network's performance that might be related to range or obstruction factors, try moving the computer to a position between five and ten feet from the Wireless Router or Access Point, in order to see if distance is the problem. If difficulties persist even at close range, please contact Belkin Technical Support.

Note: While some of the items listed below can affect network performance, they will not prohibit your wireless network from functioning; if you are concerned that your network is not operating at its maximum effectiveness, this checklist may help.

1. Wireless Router or Access Point Placement

Place your Wireless Router or Access Point, the central connection point of your network, as close as possible to the center of your wireless network devices.

To achieve the best wireless network coverage for your "wireless clients" (i.e., computers enabled by Belkin Wireless Notebook Network Cards, Wireless Desktop Network Cards, and Wireless USB Adapters):

- Ensure that your Wireless Router's or Access Point's networking antennas are parallel to each other, and are positioned vertically (toward the ceiling). If your Wireless Router or Access Point itself is positioned vertically, point the antennas as much as possible in an upward direction.
- In multistory homes, place the Wireless Router or Access Point on a floor that is as close to the center of the home as possible. This may mean placing the Wireless Router or Access Point on an upper floor.
- Try not to place the Wireless Router or Access Point near a cordless 2.4GHz phone.

2. Avoid Obstacles and Interference

Avoid placing your Wireless Router or Access Point near devices that may emit radio “noise,” such as microwave ovens. Dense objects that can inhibit Wireless communication include:

- Refrigerators
- Washers and/or dryers
- Metal cabinets
- Large aquariums
- Metallic-based UV tinted windows

If your wireless signal seems weak in some spots, make sure that objects such as these are not blocking the signal’s path (between your computers and Wireless Router or Access Point)

3. Cordless Phones

If the performance of your wireless network is impaired after attending to the above issues, and you have a cordless phone:

- Try moving cordless phones away from Wireless Routers or Access Points and your wireless-enabled computers
- Unplug and remove the battery from any cordless phone that operate on the 2.4GHz band (check manufacturers information). If this fixes the problem, your phone may be interfering.
- If your phone supports channel selection, change the channel on the phone to the furthest channel from your wireless network. For example, change the phone to channel 1 and move your Wireless Router or Access Point to channel 11. See your phone’s user manual for detailed instructions.
- If necessary, consider switching to a 900MHz or 5GHz cordless phone.

4. Choose the “quietest” channel for your wireless network

In locations where homes or offices are close together, such as apartment buildings or office complexes, there may be wireless networks nearby that can conflict with yours.

Use the Site Survey capabilities found in the Wireless LAN Utility of your wireless adapter to locate any other wireless networks that are available (see your wireless adapter’s manual), and move your Wireless Router (or Access Point) and computers to a channel as far away from other networks as possible.

Experiment with more than one of the available channels, in order to find the clearest connection and avoid interference from neighboring cordless phones or other wireless devices.

For Belkin wireless networking products, use the detailed Site Survey and wireless channel information included in your User Guide.

These guidelines should allow you to cover the maximum possible area with your Wireless Router or Access Point. Should you need to cover an even wider area, we suggest the Belkin Wireless Range Extender/Access Point.

5. Secure connections, VPNs, and AOL

Secure connections are connections that typically require a user name and password, and are used where security is important. Secure connections include:

- Virtual Private Network (VPN) connections, often used to connect remotely to an office network
- The “Bring Your Own Access” program from America Online (AOL), which lets you use AOL through broadband provided by another cable or DSL service
- Most on-line banking websites
- Many commercial websites which require a username and password to access your account

Secure connections can be interrupted by a computer’s power management setting, which causes it to “go to sleep.” The simplest solution to avoid this is to simply reconnect by re-running the VPN or AOL software, or by re-logging into the secure web site.

A second alternative is to change your computer’s power management settings so it does not go to sleep; however, this may not be appropriate for portable computers. To change your power management setting under Windows, see the “Power Options” item in the Control Panel.

If you continue to have difficulty with Secure Connection, VPNs and AOL please review the steps above to be sure you have addressed these issues.

Introduction

For more information regarding our networking products, visit our website at www.belkin.com/networking or call Belkin Technical Support at:

US: **877-736-5771**
 310-898-1100 ext.2263

Europe: **00 800 223 55 460**

Australia: **1800 666 040**

Singapore: **800 616 1790**

1	section
2	
3	
4	
5	
6	
7	
8	
9	
10	
11	

Product Overview

Product Features

In minutes you will be able to share your Internet connection and network your computers. The following is a list of features that make your new Belkin Wireless G Router an ideal solution for your home or small office network.

Works with Both PCs and Mac® Computers

The Router supports a variety of networking environments including Mac OS® 8.x, 9.x, X v10.x, AppleTalk®, Linux®, Windows® 95, 98, Me, NT®, 2000, and XP, and others. All that is needed is an Internet browser and a network adapter that supports TCP/IP (the standard language of the Internet).

Front-Panel LED Display

Lighted LEDs on the front of the Router indicate which functions are in operation. You'll know at-a-glance whether your Router is connected to the Internet. This feature eliminates the need for advanced software and status-monitoring procedures.

Web-Based Advanced User Interface

You can set up the Router's advanced functions easily through your web browser, without having to install additional software onto the computer. There are no disks to install or keep track of and, best of all, you can make changes and perform setup functions from any computer on the network quickly and easily.

NAT IP Address Sharing

Your Router employs Network Address Translation (NAT) to share the single IP address assigned to you by your Internet Service Provider while saving the cost of adding additional IP addresses to your Internet service account.

Product Overview

1	
2	section
3	
4	
5	
6	
7	
8	
9	
10	
11	

SPI Firewall

Your Router is equipped with a firewall that will protect your network from a wide array of common hacker attacks including IP Spoofing, Land Attack, Ping of Death (PoD), Denial of Service (DoS), IP with zero length, Smurf Attack, TCP Null Scan, SYN flood, UDP flooding, Tear Drop Attack, ICMP defect, RIP defect, and fragment flooding.

Integrated 10/100 4-Port Switch

The Router has a built-in, 4-port network switch to allow your wired computers to share printers, data and MP3 files, digital photos, and much more. The switch features automatic detection so it will adjust to the speed of connected devices. The switch will transfer data between computers and the Internet simultaneously without interrupting or consuming resources.

Universal Plug-and-Play (UPnP) Compatibility

UPnP (Universal Plug-and-Play) is a technology that offers seamless operation of voice messaging, video messaging, games, and other applications that are UPnP-compliant.

Support for VPN Pass-Through

If you connect to your office network from home using a VPN connection, your Router will allow your VPN-equipped computer to pass through the Router and to your office network.

Built-In Dynamic Host Configuration Protocol (DHCP)

Built-In Dynamic Host Configuration Protocol (DHCP) on-board makes for the easiest possible connection of a network. The DHCP server will assign IP addresses to each computer automatically so there is no need for a complicated networking setup.

Easy Install Wizard

The Easy Install Wizard takes the guesswork out of setting up your Router. This automatic software determines your network settings for you and sets up the Router for connection to your Internet Service Provider (ISP). In a matter of minutes, your Wireless Router will be up and running on the Internet.

Product Overview

NOTE: Easy Install Wizard software is compatible with Windows 98SE, Me, 2000, XP and Mac OS 9.X and Mac OS X. If you are using another operating system, the Wireless Router can be set up using the Alternative Method described in this manual (see page 22).

Integrated 802.11g Wireless Access Point

802.11g is an exciting new wireless technology that achieves data rates up to 54Mbps, nearly five times faster than 802.11b.

Integrated Parental Control Web Content Filter

Belkin has teamed with Cerberian, a leading content-filtering company, to bring you this unique feature. Your Belkin Wireless G Router is the first home networking solution with an integrated web content filter that allows you to block unwanted or offensive web content before it makes it to your network. Unlike other Parental Control solutions, Parental Control is built into the Belkin Wireless Router, so there is no software to install on any computer and you will never be charged a per-computer fee for the service, ever. Your Wireless Router comes with a six-month free trial of this feature so you can take advantage of the capabilities right away. No credit card is needed to use the trial. You have control: Belkin Parental Control can be modified to meet your needs. You can set up your own policies and block any website you want. There is also an optional reporting feature (fee-based) that allows you to get a report showing you every website that was visited from your network (refer to your Parental Control Manual for more information).

MAC Address Filtering

For added security, you can set up a list of MAC addresses (unique client identifiers) that are allowed access to your network. Every computer has its own MAC address. Simply enter these MAC addresses into a list using the web-based user interface and you can control access to your network.

Knowing Your Router

Package Contents

- Belkin Wireless G Router
- Quick Installation Guide
- Belkin Easy Install Wizard Software CD
- Belkin RJ45 Ethernet Networking Cable
- Power Supply
- User Manual

System Requirements

- Broadband Internet connection such as a cable or DSL modem with RJ45 (Ethernet) connection
- At least one computer with an installed network interface adapter
- TCP/IP networking protocol installed on each computer
- RJ45 Ethernet networking cable
- Internet browser

Easy Install Wizard Software System Requirements

- A PC running Windows 98SE, Me, 2000, or XP or a Mac computer running Mac OS 9.x or OS X
- Minimum 64MB RAM
- Internet Browser

1

2

3

4

5

6

7

8

9

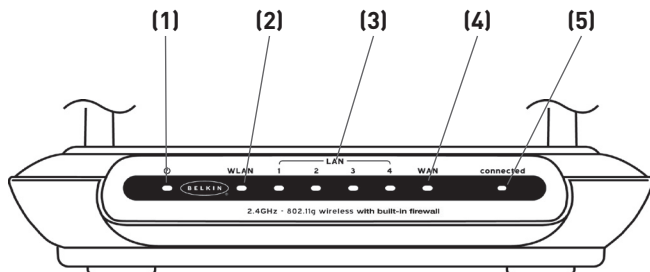
10

11

section

Knowing Your Router

The Router has been designed to be placed on a desktop. All of the cables exit from the rear of the Router for better organization and utility. The LED indicators are easily visible on the front of the Router to provide you with information about network activity and status.



1. Power/Ready LED

When you apply power to the Router or restart it, a short period of time elapses while the Router boots up. During this time, the Power/Ready LED blinks. When the Router has completely booted up, the Power/Ready LED becomes a SOLID light, indicating the Router is ready for use.

OFF	Router is OFF
Blinking Green	Router is Booting Up
Solid Green	Router is Ready

2. WLAN: Wireless Network LED

OFF	Wireless Network is OFF
Green	Wireless Network is Ready
Blinking	Indicates Wireless Activity

3. LAN Port-Status LEDs

These LEDs are labeled 1–4 and correspond to the numbered ports on the rear of the Router. When a computer is properly connected to one of the LAN ports on the rear of the Router, the

LED will light. GREEN means a 10Base-T device is connected, AMBER means a 100Base-T device is connected. When information is being sent over the port, the LED blinks rapidly.

OFF	No Device is Linked to the Port
Green	10Base-T Device Connected
Orange	100Base-Tx Device Connected
Blinking (Orange or Green)	Port Activity

4. WAN Status LED

This LED lights in GREEN to indicate that your modem is connected properly to the Router. It blinks rapidly when information is being sent over the port between the Router and the modem.

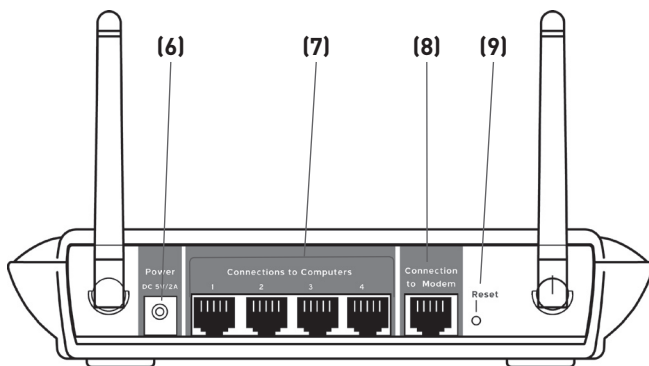
OFF	No WAN Link
Solid Green	Good WAN Link
Blinking Green	WAN Activity

5. Connected LED

This unique LED shows you when the Router is connected to the Internet. When the light is OFF, the Router is NOT connected to the Internet. When the light is blinking, the Router is attempting to connect to the Internet. When the light is solid GREEN, the Router is connected to the Internet. When using the “Disconnect after x minutes” feature, this LED becomes extremely useful in monitoring the status of your Router’s connection.

OFF	Router is not Connected to the Internet
Blinking Green	Router is Attempting to Connect to the Internet
Solid Green	Router is Connected to the Internet

Knowing Your Router



6. Power Jack - GRAY

Connect the included 5V DC power supply to this jack.

7. Connections to Computers (LAN Ports) - BLUE

Connect your wired (non-wireless) computers to these ports. These ports are RJ45, 10/100 auto-negotiation, auto-uplinking ports for standard UTP category 5 or 6 Ethernet cable. The ports are labeled 1 through 4. These ports correspond to the numbered LEDs on the front of the Router.

8. Connection to Modem (WAN Port) - GREEN

This port is for connection to your cable or DSL modem. Use the cable that was provided with the modem to connect the modem to this port. Use of a cable other than the cable supplied with the cable modem may not work properly.

9. Reset Button

The Reset button is used in rare cases when the Router may function improperly. Resetting the Router will restore the Router's normal operation while maintaining the programmed settings. You can also restore the factory default settings by using the Reset button. Use the restore option in instances where you may have forgotten your custom password.

a. Resetting the Router

Push and release the Reset button. The lights on the Router will momentarily flash. The Power/Ready light will begin to blink. When the Power/Ready light becomes solid again, the reset is complete.

b. Restoring the Factory Defaults

Press and hold the Reset button for at least ten seconds then release it. The lights on the Router will momentarily flash. The Power/Ready light will begin to blink. When the Power/Ready light becomes solid again, the restore is complete.

1

2

3

4

5

6

7

8

9

10

11

section

Connecting and Configuring Your Router

Verify the contents of your box. You should have the following:

- Belkin Wireless G Router
- Quick Installation Guide
- Belkin Easy Install Wizard Software CD
- RJ45 Ethernet Networking Cable (for connection of the Router to the computer)
- Power Supply
- User Manual

Modem Requirements

Your cable or DSL modem must be equipped with an RJ45 Ethernet port. Many modems have both an RJ45 Ethernet port and a USB connection. If you have a modem with both Ethernet and USB, and are using the USB connection at this time, you will be instructed to use the RJ45 Ethernet port during the installation procedure. If your modem has only a USB port, you can request a different type of modem from your ISP, or you can, in some cases, purchase a modem that has an RJ45 Ethernet port on it.



Ethernet



USB

ALWAYS INSTALL YOUR ROUTER FIRST! IF YOU ARE INSTALLING NUMEROUS NETWORK DEVICES FOR THE FIRST TIME, IT IS IMPORTANT THAT YOUR ROUTER IS CONNECTED AND RUNNING BEFORE ATTEMPTING TO INSTALL OTHER NETWORK COMPONENTS SUCH AS NOTEBOOK CARDS AND DESKTOP CARDS.

Easy Install Wizard

Belkin has provided our Easy Install Wizard software to make installing your Router a simple and easy task. You can use it to get your Router up and running in minutes.

The Easy Install Wizard requires that your Windows® 98SE, Me, 2000, XP or Mac OS 9.2x, X.1.x computer be connected directly to your cable or DSL modem and that the Internet connection is active

Connecting and Configuring Your Router

and working at the time of installation. If it is not, you must use the “Alternate Setup Method” section of this manual to configure your Router. Additionally, if you are using an operating system other than Windows 98SE, Me, 2000, or XP, you must set up the Router using the “Alternate Setup Method” section of this manual.

IMPORTANT: Run the Easy Install Wizard software from the computer that is directly connected to the cable or DSL modem. **DO NOT CONNECT THE ROUTER AT THIS TIME.**

Step 1 | Run the Easy Install Wizard Software

1. Shut down any programs that are running on your computer at this time.
2. Make sure you have the following items at the computer that is now directly connected to the cable or DSL modem. **DO NOT CONNECT THE ROUTER AT THIS TIME.**
 - Quick Installation Guide
 - The Easy Install Wizard CD-ROM
 - The Router
 - The Router power supply
 - RJ45 Ethernet networking cable
 - This User Manual
3. Turn off any firewall or Internet connection sharing software on your computer.
4. Insert the Easy Install Wizard software CD into your CD-ROM drive. The Easy Installation Wizard screen will automatically appear on your screen within 15 seconds. If it does not, select your CD-ROM drive from “My Computer” and double-click on the file named “EasyInstall.exe” on the CD-ROM.

1

2

3

4

5

6

7

8

9

10

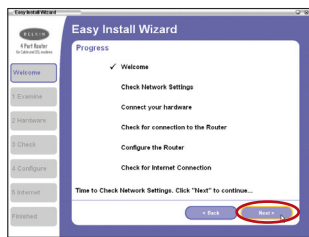
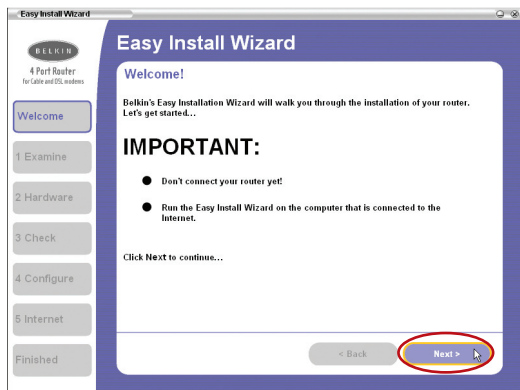
11

section

Connecting and Configuring Your Router

Welcome Screen

After you insert the CD into your CD-ROM drive, the Wizard's welcome screen will appear. Make sure you have not connected the Router at this point. If you have connected your Router, please reconnect your computer directly to the modem. Click "Next" when you are ready to move on.



Progress Screen

Easy Install will show you a progress screen each time a step in the setup has been completed. Each time you see the progress screen, click "Next" when you are ready to move to the next step.



Examining Settings

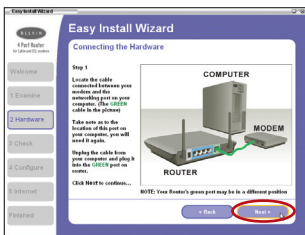
The Wizard will now examine your computer's network settings and gather information needed to complete the Router's connection to the Internet. When the Wizard is finished examining your computer, click "Next" to continue.

Multi-NICs Screen

If you have more than one network adapter installed in your computer a Multi-NIC Screen will appear. If you have more than one network adapter installed in your computer, the Wizard will need to know which adapter is connected to your modem. Select the network card that is connected to your modem from the list and click “Next”. If you are not sure which adapter to choose, select the adapter at the top of the list. If you mistakenly choose the wrong adapter now, you will be able to choose a different one later.

Step 2 | Hardware Setup

The Wizard will walk you through connecting your Router to your computer and modem. Follow the steps on the screen using the pictures as a guide.

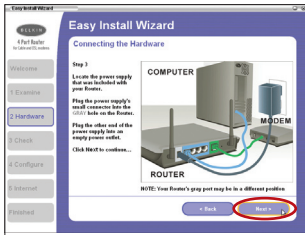


- 2.1 This step instructs you to locate the cable connected between your modem and the networking port on your computer. Unplug this cable from the computer and plug it into the GREEN port on the Router. Click “Next” to continue.

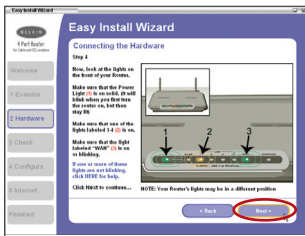
Connecting and Configuring Your Router



- 2.2** This step instructs you to locate the BLUE cable that is included with your Router. Plug one end of this cable into ANY one of the BLUE ports on your Router. Plug the other end of the cable into the networking port on your computer. Click “Next” to continue.

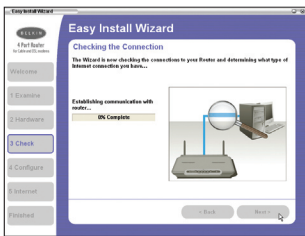


- 2.3** This step instructs you to locate the power supply that is included with your Router. Plug the power supply's small connector into the GRAY port on the Router. Plug the power supply into an empty power outlet. Click “Next” to continue.



- 2.4** This step instructs you to look at the lights on the front of your Router. Make sure the appropriate lights are ON. Refer to the Easy Install software on your computer's screen for more details. Click “Next” to continue.

Step 3 | Checking the Connection



3.1 Once you have completed connecting the Router, the Wizard will check the connection to the Router and then go on to determine what type of Internet connection you have.



3.2 User Name and Password Needed
If you have a connection type that requires a user name and a password, the Wizard will ask you to type in your user name and password. If your connection type does not require a user name and password, you will not see this screen.

Your user name and password is provided to you by your Internet Service Provider. If you have to type in a user name and password to connect to the Internet, then type that same user name and password in here. Your user name looks something like “jsmith@myisp.com” or simply “jsmith”. The service name is optional and is very rarely required by your ISP. If you don’t know your service name, leave this blank. When you have entered your information, click “Next” to move on.

1

2

3

4

5

6

7

8

9

10

11

section

Connecting and Configuring Your Router



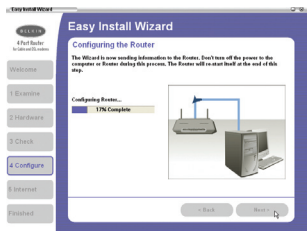
3.3 Wireless Setup

This Step Is Optional. Click “Next” if you want to skip it.

Using this step, you can customize your wireless network settings if you want to. Follow the steps on the screen to complete this step. Click “Next” to continue.

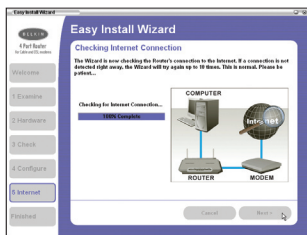
Step 4 | Configuring the Router

The Wizard will now transfer all of the configuration information to the Router. This will take approximately one minute. During this time, do not turn off the Router or computer. The Router will restart itself at the end of this step.

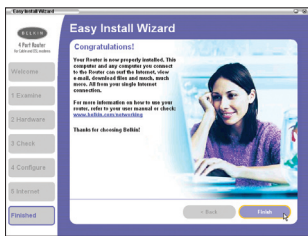


4.1 Checking Internet

The Wizard will now check for an Internet connection. This can take a few minutes. The Wizard may not detect a connection right away. If not, it will retry a number of times. The “Connected” light on the front panel of the Router will flash during this time. Please be patient through this process.



Connecting and Configuring Your Router



4.2 Finished

When the Internet connection is complete, the Wizard will tell you that you are finished. The “Connected” LED on the front of the Router will be solid GREEN, indicating that the Router is now connected to the Internet.

Your Router is now connected to the Internet. Now you can begin surfing the Internet by opening your browser and going to your favorite web page.

Congratulations! You have finished installing your new Belkin Router. You are ready to set up the other computers in your home. You can also add computers to your Router any time you want.

1

2

3

4

5

6

7

8

9

10

11

section

Alternate Setup Method

The Advanced User Interface is a web-based tool that you can use to set up the Router if you don't want to use the Easy Install Wizard. You can also use it to manage advanced functions of the Router. From the Advanced User Interface, you can perform the following tasks:

- View the Router's current settings and status.
- Configure the Router to connect to your ISP with the settings that they provided you.
- Change the current network settings such as the Internal IP address, the IP address pool, DHCP settings and more.
- Set the Router's firewall to work with specific applications (port forwarding).
- Set up security features such as client restrictions, MAC address filtering, WEP and WPA.
- Enable the DMZ feature for a single computer on your network.
- Change the Router's internal password.
- Enable/Disable UPnP (Universal Plug-and-Play).
- Reset the Router.
- Back up your configuration settings.
- Reset the Router's default settings.
- Update the Router's firmware.

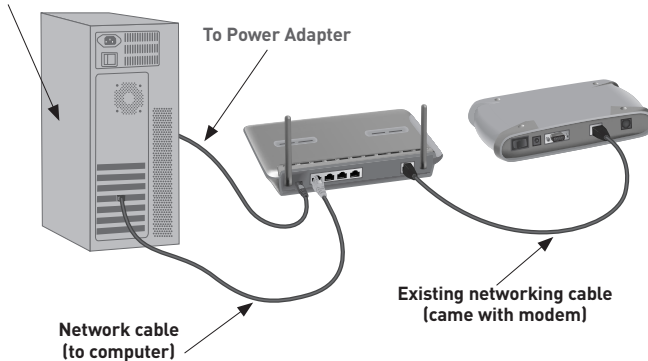
Step 1 | Connecting your Router

- 1.1** Turn off the power to your modem by unplugging the power supply from the modem.
- 1.2** Locate the network cable that is connected between your modem and your computer and unplug it from your computer, leaving the other end connected to your modem.
- 1.3** Plug the loose end of the cable you just unplugged into the port on the back of the Router labeled "Internet/WAN".
- 1.4** Connect a new network cable (not included) from the back of the computer to one of the ports labeled "1-4". **Note:** It does not matter which numbered port you choose.

Alternate Setup Method

- 1.5 Turn your cable or DSL modem on by reconnecting the power supply to the modem.

Mac or PC computer that was originally connected to the cable or DSL modem



Note: Your Router may have ports in different locations than depicted in the illustration above.

- 1.6 Before plugging the power cord into the Router, plug the cord into the wall, then plug the cord into the Router's power jack.
- 1.7 Verify that your modem is connected to the Router by checking the lights on the front of the Router. The green light labeled "WAN" should be ON if your modem is connected correctly to the Router. If it is not, recheck your connections.
- 1.8 Verify that your computer is connected properly to the Router by checking the lights labeled "LAN 1,2,3,4". The light which corresponds to the numbered port connected to your computer should be ON, if your computer is connected properly. If it is not, recheck your connections.

1

2

3

4

5

section

6

7

8

9

10

11

Alternate Setup Method

Step 2 | Set your Computer's Network Settings to Work with a DHCP Server

See the section in this manual called “Manually Configuring Network Settings” for directions.

Step 3 | Configuring the Router Using the Web-Based Advanced User Interface

Using your Internet browser, you can access the Router's Web-Based Advanced User Interface. In your browser, type “192.168.2.1” (you do not need to type in anything else such as “http://” or “www”). Then press the “Enter” key.

Address	192.168.2.1
---------	-------------

PLEASE NOTE: If you have difficulty accessing the Router's web-based interface, go to Section 7 of the user manual titled “Manually Configuring Computer Network Settings”.

Logging into the Router

You will see the Router's home page in your browser window. The home page is visible to any user who wants to see it. To make any changes to the Router's settings, you have to log in. Clicking the “Login” button or clicking on any one of the links on the home page will take you to the login screen. The Router ships with no password entered. In the login screen, leave the password blank and click the “Submit” button to log in.

Login

Before you can change any settings, you need to log in with a password. If you have not yet set a custom password, then leave this field blank and click “Submit.”

Password

Default = leave blank

Clear

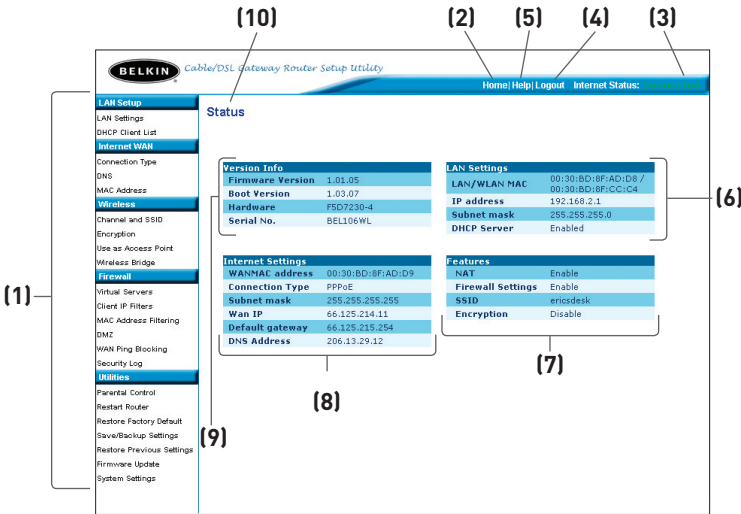
Submit

Logging out of the Router

One computer at a time can log in to the Router for the purposes of making changes to the settings of the Router. Once a user has logged in to make changes, there are two ways that the computer can be logged out. Clicking the “Logout” button will log the computer out. The second method is automatic. The login will time out after a specified period of time. The default login time out is 10 minutes. This can be changed from 1 to 99 minutes. For more information, see the section in this manual titled “Changing the Login Timeout Setting”.

Understanding the Web-Based Advanced User Interface

The home page is the first page you will see when you access the Advanced User Interface (UI). The home page shows you a quick view of the Router’s status and settings. All advanced setup pages can be reached from this page.



1. Quick-Navigation Links

You can go directly to any of the Router’s advanced UI pages by clicking directly on these links. The links are divided into logical categories and grouped by tabs to make finding a particular setting easier to find. Clicking on the purple header of each tab will show you a short description of the tab’s function.