

# Wireless CF Card

## User Manual

### **Federal Communications Commission (FCC) Compliance Notice: Radio Frequency Notice**

This device complies with part 15 of the FCC Rules. Operation is subject to the following two conditions:

1. This device may not cause harmful interference.
2. This device must accept any interference received, including interference that may cause undesired operation.

Note: This equipment has been tested and found to comply with the limits for a Class B digital device, pursuant to part 15 of the FCC Rules. These limits are designed to provide reasonable protection against harmful interference in a residential installation. This equipment generates, uses, and can radiate radio frequency energy and, if not installed and used in accordance with the instructions, may cause harmful interference to radio communications. However, there is no guarantee that interference will not occur in a particular installation. If this equipment does cause harmful interference to radio or television reception, which can be determined by turning the equipment off and on, the user is encouraged to try to correct the interference by one or more of the following measures: (1) Reorient or relocate the receiving antenna, (2) Increase the separation between the equipment and receiver, (3) Connect the equipment into an outlet on a circuit different from that to which the receiver is connected, (4) Consult the dealer or an experienced radio/TV technician for help.

### **IMPORTANT NOTE:**

#### **Federal Communications Commission (FCC) Radiation Exposure Statement**

This equipment complies with FCC radiation exposure limits set forth for an uncontrolled environment. In order to avoid the possibility of exceeding the FCC radio frequency exposure limits, human proximity to the antenna shall not be less than 20 cm (8 inches) during normal operation.

This transmitter must not be co-located or operating in conjunction with any other antenna or transmitter.

## TABLE OF CONTENT

<b>INTRODUCTION .....</b>	<b>1</b>
<b>CONNECT THE CF CARD TO YOUR PDA.....</b>	<b>2</b>
HARDWARE INSTALLATION .....	2
<b>DRIVER INSTALLATION.....</b>	<b>3</b>
INSTALL DRIVER UNDER WINDOWS CE .....	3
<b>CONFIGURATION UTILITY .....</b>	<b>6</b>
<i>LINK INFO</i> .....	6
<i>CONFIGURATION</i> .....	6
<i>ENCRYPTION</i> .....	7
<i>ABOUT</i> .....	8

## Introduction

The Wireless CF card helps you create a wireless network for sharing your broadband cable or DSL internet access among multiple PCs or PDAs in and around your home or office. It is designed for PDA running Win CE 3.0. Its auto-sensing capability allows packet transfer in 11Mbps for maximum throughput, or speed reduction to the lower 1Mbps speed for distance or working in a noisy environment.

### Features

- 11 Mbps High-Speed Transfer Rate
- Interoperable with IEEE 802.11b(DSSS) 2.4GHz-compliant Equipment
- Plug-and Play Operation Provides Easy Setup
- Utilizes Intersil Prism2.5 chip sets
- Advanced Power Management Features Conserve Valuable Notebook PC Battery Life
- Direct Sequence Spread Spectrum Compatible to Prevent Lost Connections
- Rugged Metal Design with Integrated Antenna
- Wired Equivalent Privacy (WEP) 64/128-bit data encryption
- Driver Supports Win CE 3.0

## Connect the CF Card to Your PDA

### Hardware Installation

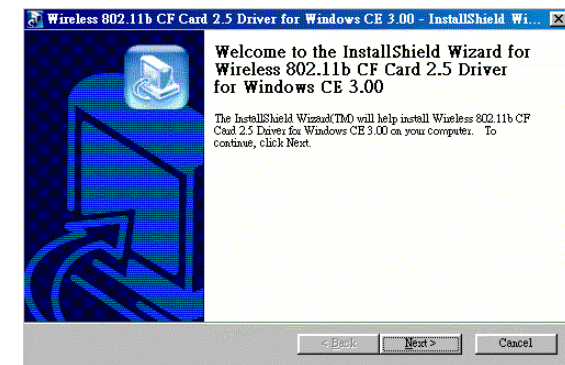
- Locate an available Type I CF slot on your notebook computer or PDA.
- With the CF card 50-pin connector facing the CF slot and the “Network CF Card” label facing up, slide the CF card completely into the CF slot.
- Insert the driver CD into your CD drive.
- The Hardware Installation is complete.

## Driver Installation

### Install Driver Under Windows CE

The CF card driver is installed with configuration utility automatically while the CF card is installed on your PDA.

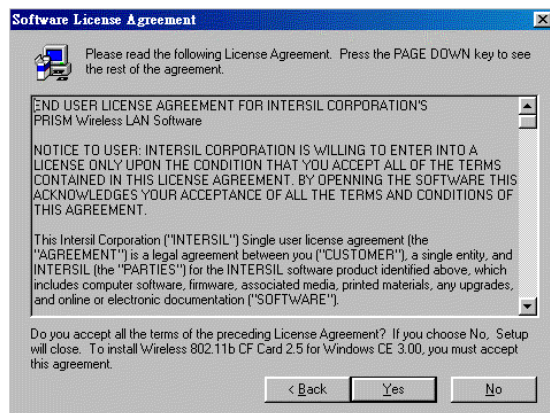
1. With the CF card inserted into your PDA while your PDA is connected to your PC, insert the Setup CD into your CD-ROM drive. Execute the Setup.exe file of the CD-ROM drive. Wireless 802.11b CF Card 2.5 Driver for Windows CE 3.00 – InstallShield Wizard screen appears. Click the **Next** button to proceed.



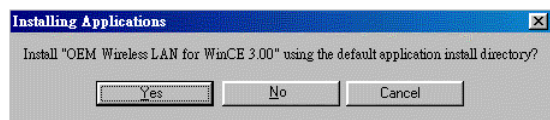
2. The following screen will indicate that Windows is ready to continue the installation. Click the **Next** button.



- Software License Agreement screen appears. Read the entire agreement by clicking the **Page Down** button on your keyboard. Click the **Yes** button if you agree, or **No** if you disagree. Clicking **No** will terminate the installation. If you click **Yes**, the installation will continue.



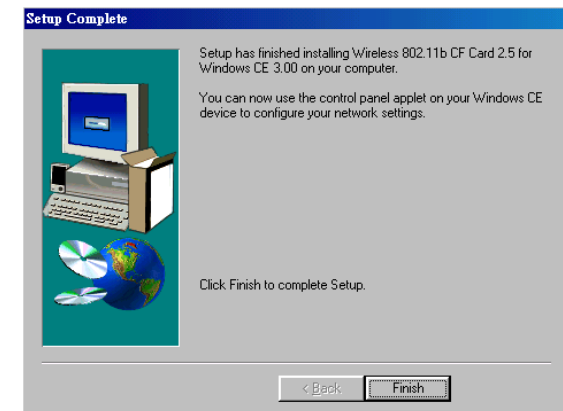
- Click the **Yes** button to use the default application install directory.



- Check your PDA and then click the **Yes** button.



- Once the installation wizard is complete, click the **Finish** button.



---

## Configuration Utility

The **Configuration Utility** is provided to allow you further customization of the CF Card and your wireless network.

### LINK INFO

The Link Info screen provides information about the current link between the CF Card and the wireless Access Point.

The **Current Channel** field shows to what channel the CF Card is set.

The **Current Tx Rate** field shows the transfer rate in megabits per second.

The **Throughput** fields show the rate at which data is transferred and received in Bytes per second.

The **Link Quality and Signal Strength** fields will be displayed by the strength of the block when applicable.

### CONFIGURATION

The Configuration screen allows you to customize the setting for the CF Card and your wireless network.

The **Mode** setting determines the architecture of your wireless network. Select **Ad-Hoc** or **Infrastructure** Mode depending on your network type. The Ad-Hoc mode is used for a simple peer-to-peer network and allows the sharing of local resources only between CF Cards without needing a wireless Access Point. The **Infrastructure** mode allows a wireless network to be integrated into an existed, wired network through an Access Point. Infrastructure networks permit roaming between Access Points while maintaining a connection to all network resources and provide additional features, such as WEP security, power saving and extended range.

---

The acronym for **Service Set Identifier, SSID** is the unique name shared among all points in a wireless network. The SSID must be identical for all points in the network. It is case sensitive and must not exceed 32 characters.

The **Tx Rate** field shows the current transfer rate for the CF Card. To optimize performance and range, the Tx Rate should be set to **Fully automatic**, which will automatically adjust the transfer speed for best performance and longest range.

Power Saving Mode, or **PS Mode**, enables or disables the power saving features of your CF Card. This setting can only be enabled or disabled in Infrastructure mode.

The **Channel** setting specifies the channel used in wireless communication and should be set to the same channel as the other points in the wireless network.

### ENCRYPTION

The 64/128-bit WEP keys can be generated from a user-defined passphrase.

The **Passphrase** can be any text string with a maximum of 32 characters.

WEP must be enabled from the Configuration screen in order to set the 64/128-bit key. To generate an encryption key:

1. Type exactly the same case sensitive PassPhrase in the PassPhrase field.
2. Click the **Apply** button to create the encryption key. Te Passphrase generates four unique keys.
3. Make sure that the Default Key is the same for each point on the network.

## **ABOUT**

The **About** screen shows the release information for the Configuration Utility.