



User Manual
Dericam WiFi Bullet
IP Camera-Bx Series

V1.0.2

Contents

Welcome	3
1 Features and Specifications	5
1.1 Overview.....	5
1.2 Features	5
2 Camera Connection and Installation.....	7
2.1 Connection Guide	7
2.2 Installation Guide	7
2.3 Default Username and Password.....	7
3 Access the camera.....	8
3.1 Mobile device access.....	8
3.2 Web browser access.....	8
3.2.1 SearchTool for Windows OS	8
3.2.2 SearchTool for Mac OS.....	9
3.2.3 Access by IP address and http port	11
3.2.4 Remote access.....	14
3.3 NVR access.....	14
3.4 RTSP access.....	14
4 App for Mobile Device	17
4.1 Add Camera	17
4.1.1 Set up a new camera.....	17
4.1.2 Set up an existing camera	21
4.2 Camera list page.....	22
4.3 Live view page	23
4.4 Settings pages	25
4.4.1 Edit Password	25
4.4.2 Alarm Settings.....	25
4.4.3 Alarm link settings	25
4.4.4 Timed recording settings	26
4.4.5 Audio settings.....	26

4.4.6 Video settings.....	26
4.4.7 Wifi settings.....	26
4.4.8 SD Card settings	27
4.4.9 Device time settings	27
4.4.10 Email settings.....	27
4.4.11 FTP settings.....	28
4.4.12 System settings.....	28
4.4.13 Device information.....	28
4.5 Local files page.....	29
4.6 Playback page	30
5 Web User Interface for operation.....	31
5.1 Login page.....	31
5.2 Live page	31
5.2.1 OSD	31
5.2.2 View	32
5.2.3 ImageSettings	32
5.2.4 Tool bar.....	32
5.3 Playback page(Only for IE/Firefox browser in windows).....	34
5.3.1 Search and playback videos.....	34
5.3.2 Tool bar.....	35
5.4 Configuration page	35
5.4.1 Media settings	35
5.4.2 Network.....	37
5.4.3 Alarm.....	39
5.4.4 Advance	40
5.4.5 System	44
6. Frequently Asked Questions	47

Welcome

Thank you for purchasing a Dericam HD IP camera! This user manual will help you become familiar with our camera in a very short time. Before installation and operation, please read the below safeguards and warnings carefully.

Important Safeguards and Warnings

In order to keep your camera secure and prevent unauthorized access, please make sure to follow the steps below:

- 1) Always make sure your camera has the latest firmware as listed on www.dericam.com.
- 2) Never use the default password for your camera. Always ensure your password is at least 8-10 characters long and contains a combination of lowercase characters, uppercase characters as well as numbers.

Electrical Safety

- All installations and operations here should conform to your local electrical safety codes.
- We assume no liability or responsibility for any of the fires or electrical shocks caused by improper handling or installation.
- We are not liable for any problems caused by unauthorized modifications or attempted repair.
- Improper battery use may result in fire, explosion, or personal injury.
- When replacing the battery, please make sure you are using the same model.
- This product must be grounded to reduce the risk of electric shock.

Transportation Security

Heavy stress, violent vibrations, and excess moisture should not occur during transportation, storage, and installation of the device.

Installation

Handle the device with care. Keep the device right side up.

Do not apply power to the camera before completing installation.

Do not place objects on top of the camera.

Repair Professionals

All the examination and repair work should be done by qualified service engineers.

We are not liable for any problems caused by unauthorized modifications or user-attempted repair.

Environment

The camera should be kept in a cool, dry place away from direct sunlight, flammable materials, explosive substances, etc.

This product should be transported, stored, and used only in the specified environments as stated above.

Do not aim the camera at a strong light source, as it may cause overexposure of the picture, and may affect the longevity of the camera's sensors.

Ensure that the camera is in a well ventilated area to prevent overheating.

Operation and Maintenance

Do not touch the camera sensor or lens directly.

To clean dust or dirt off of the lens, use an air blower or a microfiber cloth.

Accessories

Be sure to use only the accessories recommended by manufacturer.

Before installation, please open the package and check to ensure that all of the components are present.

Contact the retailer that you purchased from, or Dericam directly if anything is broken or missing in the package.

Check Hardware

When you receive the product in the packaging, unpack it, and check all sides of the product for any physical damage. The protective materials used in the packaging of the product can protect most accidental damage during transportation, but to ensure that your equipment is operating as expected, it is recommended to inspect the product before proceeding further.

On the product, check specifically that the label on the bottom of the product is not damaged. The serial number of the unit is often needed to provide support.

Please check that all required items for your camera are present and accounted for. If any item is missing, please contact us as soon as possible so we can send you the missing component.

Note: Hardware does not look exactly as pictured in this section, but the steps to assemble the hardware are the same.

1 Features and Specifications

1.1 Overview

The Dericam IP Camera is an excellent digital surveillance product that can be useful to a wide variety of users. The camera connects to any router, and uses an internet connection to allow the user to access all of its functionality from many internet connected devices. It's easy to use and can be set up in a relatively small amount of time. It has various functions such as recording, playback, and monitoring functionality and it synchronizes audio and video by default.

The Dericam IP camera connects to a wide variety of routers in order to connect to the internet, both through a wired connection and wirelessly. Once setup, the camera can be accessed remotely from a wide variety of internet connected devices, including PC, iPhone, iPad, Android tablet, and Android phone.

This Dericam IP Camera adopts a high-quality design in order to achieve high levels of reliability and security. It can be configured to work locally, as well as on a network. It also has a built-in WiFi adapter that allows for the camera to be used on a wireless network, without needing a physical connection to a router or PC.

1.2 Features

The Dericam IP Camera has the following main features:

HD Resolution

It is an integrated wireless IP Camera with a color CMOS sensor which enable to view in High Definition resolution. It combines a high quality digital video camera, with a powerful web server, to bring clear video to your desktop and mobile devices no matter where by your local network or over the Internet.

P2P function

It supports P2P connection. You don't need to make complicated Port Forwarding and DDNS settings, you just need to add it into Dericam App, then you can access it over the Internet.

H.264 Encoding

It provides users with more comprehensive controls over a monitored site. It supports H.264 video compression technology, dramatically reduces file size and saves network bandwidth.

Web access

It is designed for surveillance with wide applications such as at home, in retail store and in office. Controlling the camera and managing images are simplified by using the provided web interface across the network in either wired or wireless way.

Mobile device access

It provides "Dericam" App for mobile device, please search and install App named

“Dericam” in App Store or Google Play, then you can view your camera anywhere, anytime as you wish.

Advanced Playback Function

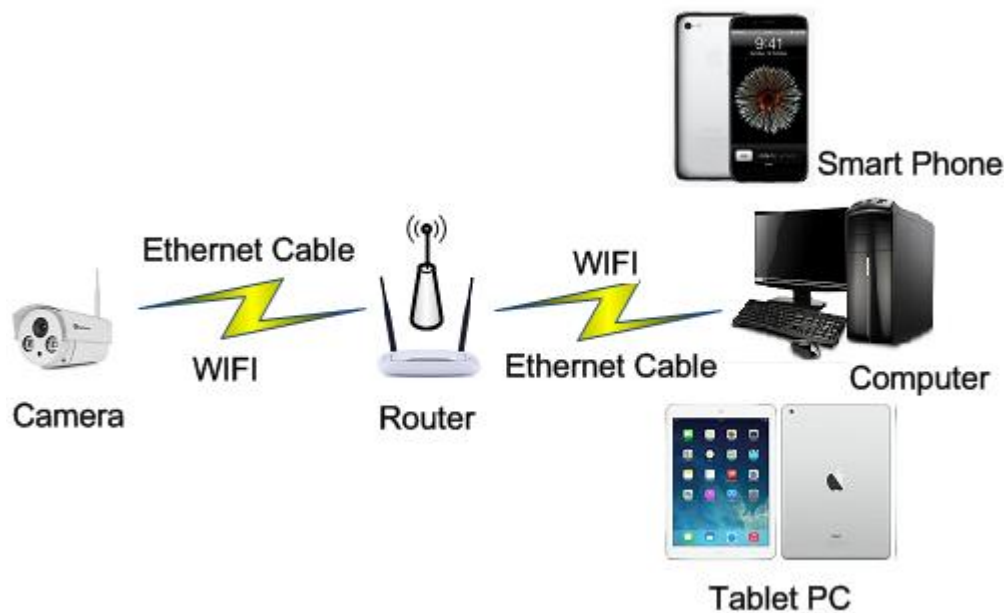
It supports real-time recording and can support search, fast forwarded playback, recorded searches, and downloading of videos and screenshots. When recording, the Camera shows a date/time overlay to ensure accurate viewing of events when they occurred.

2 Camera Connection and Installation

To make your experience with the Dericam camera easy and simple, we've provided multiple ways to set up, view, and operate your camera as on your needs. Please set up your camera in the way that works best for you.

2.1 Connection Guide

The Dericam camera can be accessed through the web browser in computer or “Dericam” App in smart phone or tablet PC. Before accessing, you should connect the camera to your router by Ethernet cable or WIFI after it is powered on.



2.2 Installation Guide

The camera has a standard camera tripod screw hole (1/4-20 UNC thread) for use in mounting the camera onto a stable surface.

Note: Prior to installation ensure that the installation environment can support at least 3 times the weight of the camera.

2.3 Default Username and Password

To login to the system for the first time, use one of the following default username/password combinations. Once you've successfully logged in, it is highly recommended to change the password for security reasons.

Username: admin

Password: admin

Note: Logging in for the first time will prompt the user to change the password to the admin account.

3 Access the camera

3.1 Mobile device access

The Dericam camera can be accessed through the “Dericam” app on either iOS or Android mobile devices. To access Dericam camera from a mobile device, please search and install the “Dericam” App first from the Google Play or App Store.



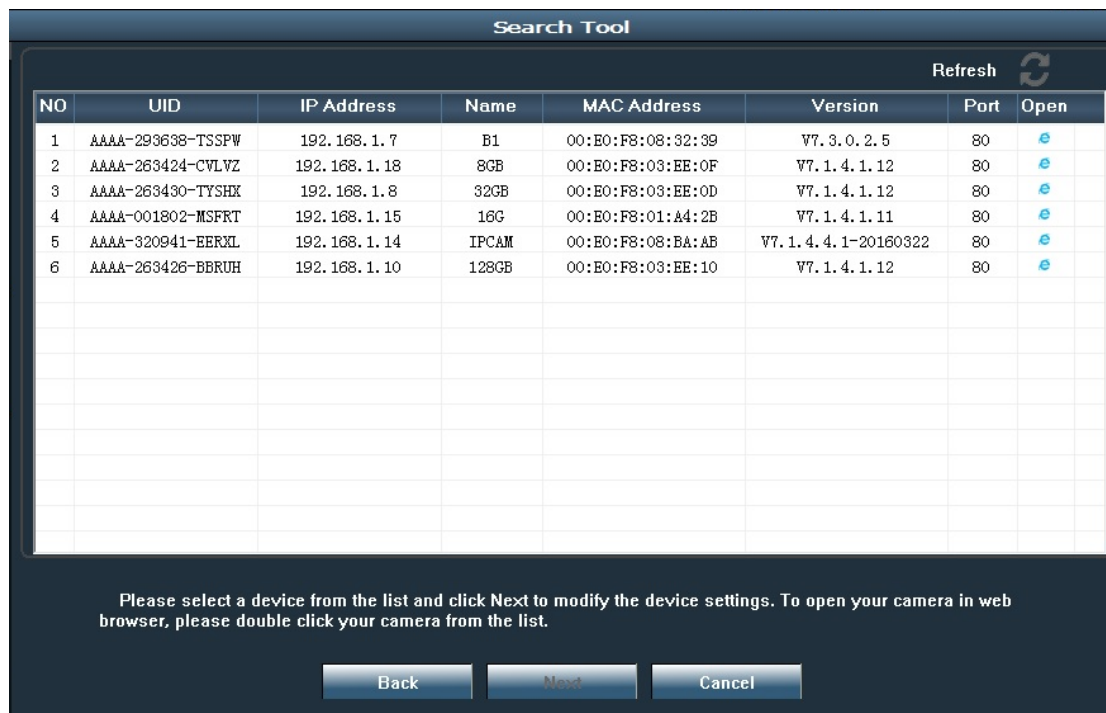
3.2 Web browser access

The Dericam can be accessed through the web browser for both windows and Mac OS. It supports the IE/Chrome/ Mozilla Firefox in windows and Safari/Chrome in Mas OS. The web browser accessing can supports all advance features of Dericam camera.

3.2.1 SearchTool for Windows OS

To easily search and access the Dericam camera in web browser of Windows OS, please use the included CD to install and run the “SearchTool” for windows. Alternatively, you can find the latest tool from www.dericam.com. Before running this tool, please ensure:

- The camera is connected to the router via an Ethernet cable or wifi.
- The camera and the PC are on the same local network.
- Using the IE/Chrome/Mozilla Firefox in Windows OS, the Safari/Chrome in Mac OS.



The screenshot shows the 'Search Tool' interface with a table of detected devices. The table has columns for NO, UID, IP Address, Name, MAC Address, Version, Port, and Open. There are 6 rows of data. Below the table is a message: 'Please select a device from the list and click Next to modify the device settings. To open your camera in web browser, please double click your camera from the list.' At the bottom are 'Back', 'Next', and 'Cancel' buttons.

NO	UID	IP Address	Name	MAC Address	Version	Port	Open
1	AAAA-293638-TSSPW	192.168.1.7	E1	00:E0:F8:08:32:39	V7.3.0.2.5	80	
2	AAAA-263424-CVLVZ	192.168.1.18	8GB	00:E0:F8:03:EE:0F	V7.1.4.1.12	80	
3	AAAA-263430-TYSHX	192.168.1.8	32GB	00:E0:F8:03:EE:0D	V7.1.4.1.12	80	
4	AAAA-001802-MSFRT	192.168.1.15	16G	00:E0:F8:01:A4:2B	V7.1.4.1.11	80	
5	AAAA-320941-EERXL	192.168.1.14	IPCAM	00:E0:F8:08:BA:AB	V7.1.4.4.1-20160322	80	
6	AAAA-263426-BBRUH	192.168.1.10	128GB	00:E0:F8:03:EE:10	V7.1.4.1.12	80	

You can also modify some camera's network configurations and camera name through the SearchTool. Please ensure you have input the right username and password of the camera to make your modifications valid.

Search Tool

Local IP 192.168.1.119 The tool finds available network settings for the IPCamera automatically, you can modify them by manually.

DHCP

IP Address: 192 . 168 . 1 . 123 Name: 181Au

SubMask: 255 . 255 . 255 . 0 User: admin

GateWay: 192 . 168 . 1 . 1 Password: *****

Port: 80

IP Address: 192.168.1.117 Name: 181Au

SubMask: 255.255.255.0 Port: 80

GateWay: 192.168.1.1

MAC Address: 00:E0:F8:03:E8:F2

Click Finish to confirm the selected device, click Back to reselect the device

Back Finish Cancel

3.2.2 SearchTool for Mac OS

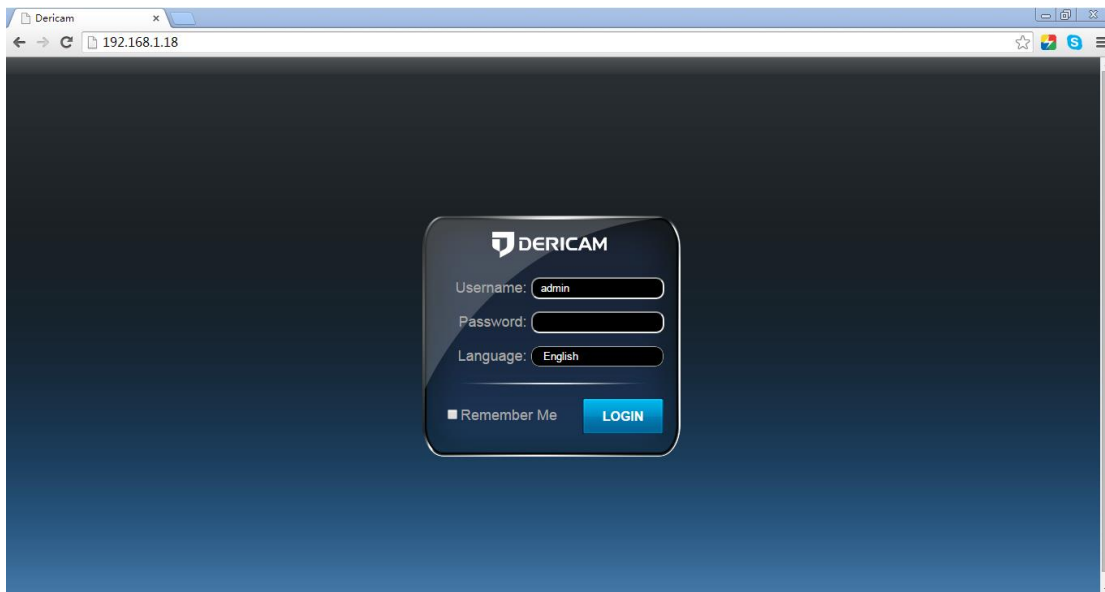
You can find the “[Dericam Mac SearchTool.zip](#)” for Mac OS in the included mini CD. Please copy and install it on your Mac computer. Then run the tool named “SearchTool” to search the camera in your LAN. From the tool, you can get the name, UID, IP address, Mac address, Http port and firmware version of the camera.



No.	Name	UID	IP	Mac	Port	Version
1	32GB	AAAA-263430-TYSHX	192.168.1.55	00:E0:F8:03:EE:0D	80	V7.1.4.1.14
2	POE 720P B...	AAAA-263422-EHPYM	192.168.1.8	00:E0:F8:09:FA:F3	80	V7.3.0.2.5
3		AAAA-374267-RHPRY	192.168.1.6	00:E0:F8:09:F5:1B	80	V7.1.5.1.1
4	SanDisk 32G	AAAA-395060-YSPYC	192.168.1.65	00:E0:F8:09:A4:7A	80	V7.1.4.1.14
5	SanDisk 64G	AAAA-263425-CHZUK	192.168.1.201	00:E0:F8:03:EE:07	80	V7.1.4.1.14
6	128GB	AAAA-263426-BBRUH	192.168.1.10	00:E0:F8:03:EE:10	80	V7.1.4.1.14

Please double click the camera you selected to open it by your default web browser

By double left clicking the camera in the searching list, you can open the camera by your default web browser, such as Safari.



You can find the button “Refresh Camera List” and “Flush Arp Buffer” by right click the search tool or the camera in the searching list, then you can refresh the searching list by these 2 buttons.

No.	Name	UID	IP	Mac	Port	Version
1	32GB	AAAA-263430-TYSHX	192.168.1.55	00:E0:F8:03:EE:0D	80	V7.1.4.1.14
2	POE 720P B...	AAAA-263422-EHPYM	192.168.1.8	00:E0:F8:09:FA:F3	80	V7.3.0.2.5
3		AAAA-374267-RHPRY	192.1		80	V7.1.5.1.1
4	SanDisk 32G	AAAA-395060-YSPYC	192.1		80	V7.1.4.1.14
5	SanDisk 64G	AAAA-263425-CHZUK	192.1		80	V7.1.4.1.14
6	128GB	AAAA-263426-BBRUH	192.1		80	V7.1.4.1.14

Please double click the camera you selected to open it by your default web browser

Here is a “Network Configuration” button in the right-clicking button list. From this button, you can modify the IP, Device display name and http port of the camera. Please note:

1. The camera will reboot automatically if you modify its http port.
2. Please enter the right username and password of your camera before you modify any network configuration of the camera.

Network Configuration

Obtain IP from DHCP server

IP Address

Subnet Mask

Gateway

Device Name

Http Port

User

Password

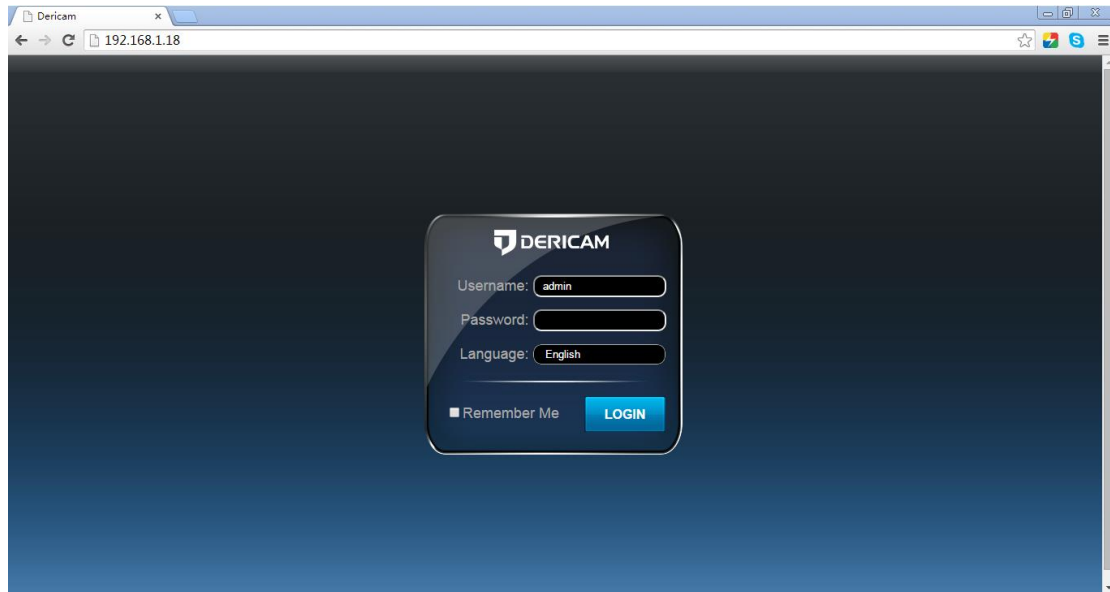
3.2.3 Access by IP address and http port

After launching the SearchTool, click the next to skip the welcome page and refresh the searching page to bring up the cameras on your LAN. Then you can double click the camera you selected to login the camera by your default web browser, or you can open the web browser you want first and input the IP address of the camera in the URL address bar of the browser by manually to login your camera. You can access the Dericam camera

by HTTP protocols as below:

<http://LAN IP Address + HTTP Port No.> For example: <http://192.168.1.108:80>.

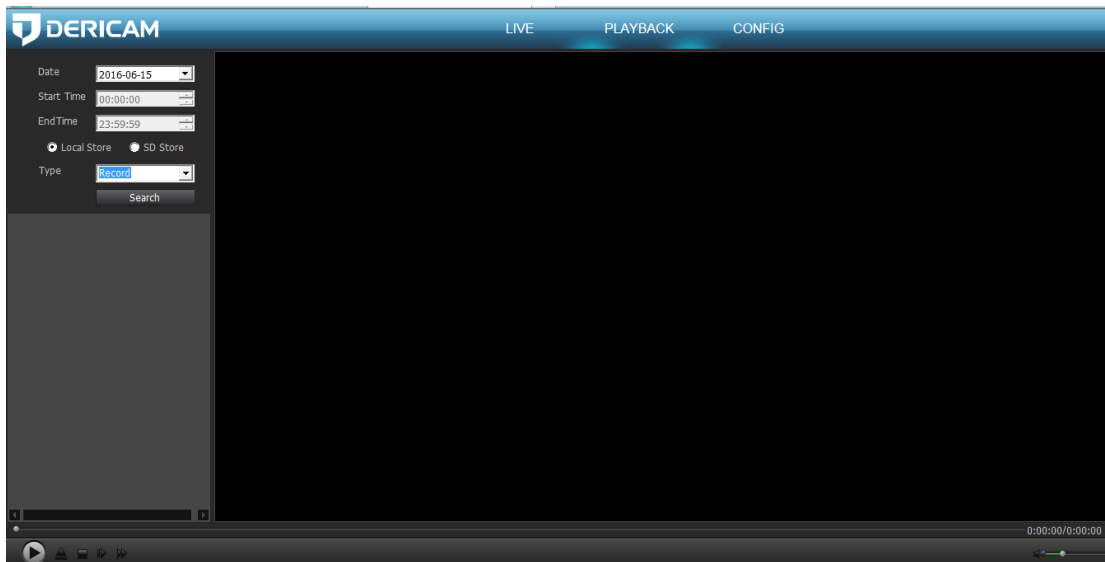
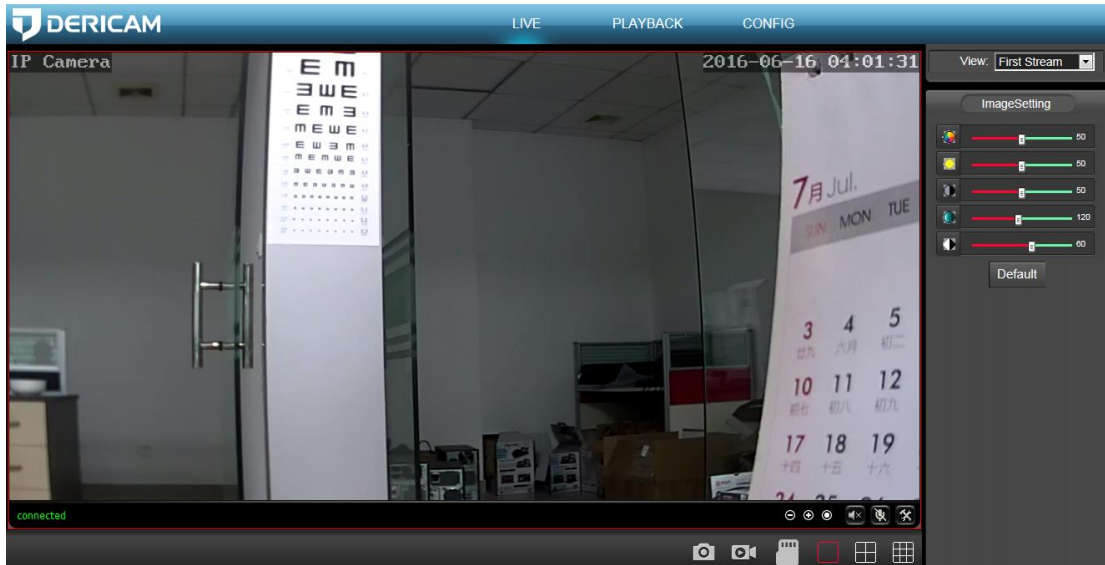
You can find the LAN IP Address and HTTP port of your camera through the SearchTool. The default HTTP port No. is 80.



Login to the camera by your login credentials (default username/password are both “admin”). If this is your first time logging into the camera by default account after it is reset, you will be prompted to change the default password. Please select a password that is at least 8 characters long, and include a combination of uppercase letters, lowercase letters, and numbers.



For the IE/ Mozilla Firefox web browser in Windows OS, when opening the camera’s interface, the browser will prompt you to install a plugin. The plugins are necessary to get video from camera. Click install to download the plugin, and install it. If the browser prompts you to allow the plugin to work on the computer, hit Allow to ensure the plugin can run successfully. Then the camera is now successfully set up for live viewing, playback and configuration!

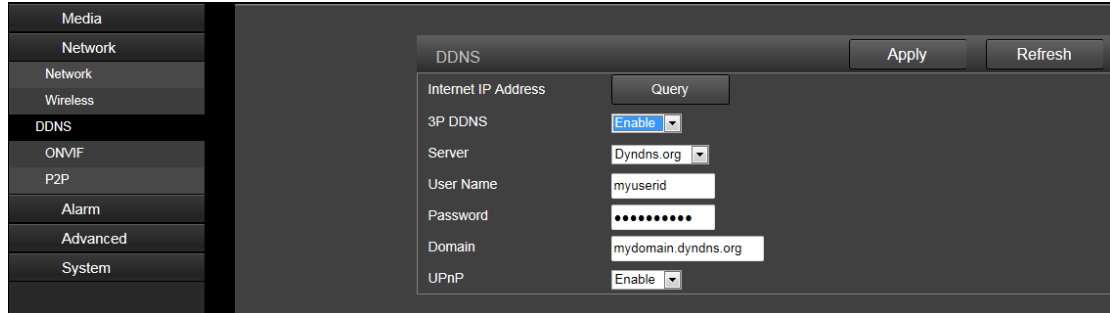


Note: Due to the limitations of NPAPI plugins, the web browser of Chrome/Safari does not support the settings for features of playback, talk, motion-detection and privacy mask.

3.2.4 Remote access

You can access Dericam camera remotely through web browsers by UPnP/DDNS features or Port forwarding.

Go to the CONFIG/DDNS page to enable the UPnP and input the information for third-party DDNS, such as DynDNS.org/3322.org/dynddns.us/No-ip.com. Then you can access the camera by DDNS remotely.



Go to your router settings page to make the appreciate port forwarding, then you can access your camera remotely through the public IP address and its corresponding port.

3.3 NVR access

The Dericam camera supports connecting to any NVR that ONVIF-enabled. This allows the camera to view live, playback and record to a network storage device.

3.4 RTSP access

The Dericam camera supports standard RTSP, you can access its video and audio directly by RTSP player such as VLC. Please make sure you enabled the RTSP feature of your camera, you can set this feature through web browsers.

RTSP URL

First stream: rtsp://username:password@IP:port/11

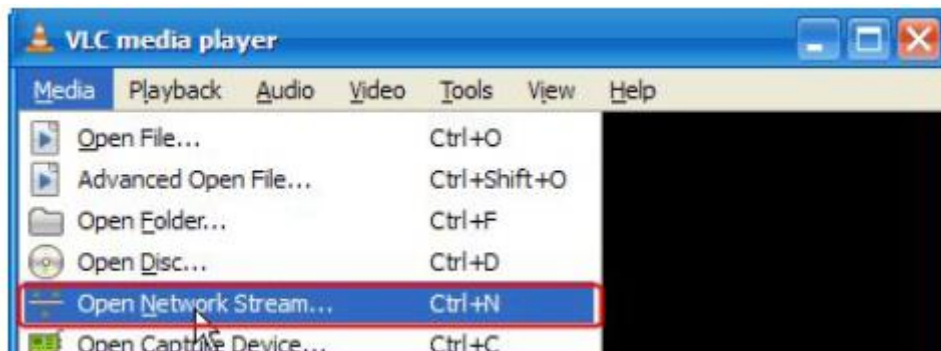
For example: rtsp://admin:123456@192.168.1.10:554/11

Second stream: rtsp://username:password@IP:port/12

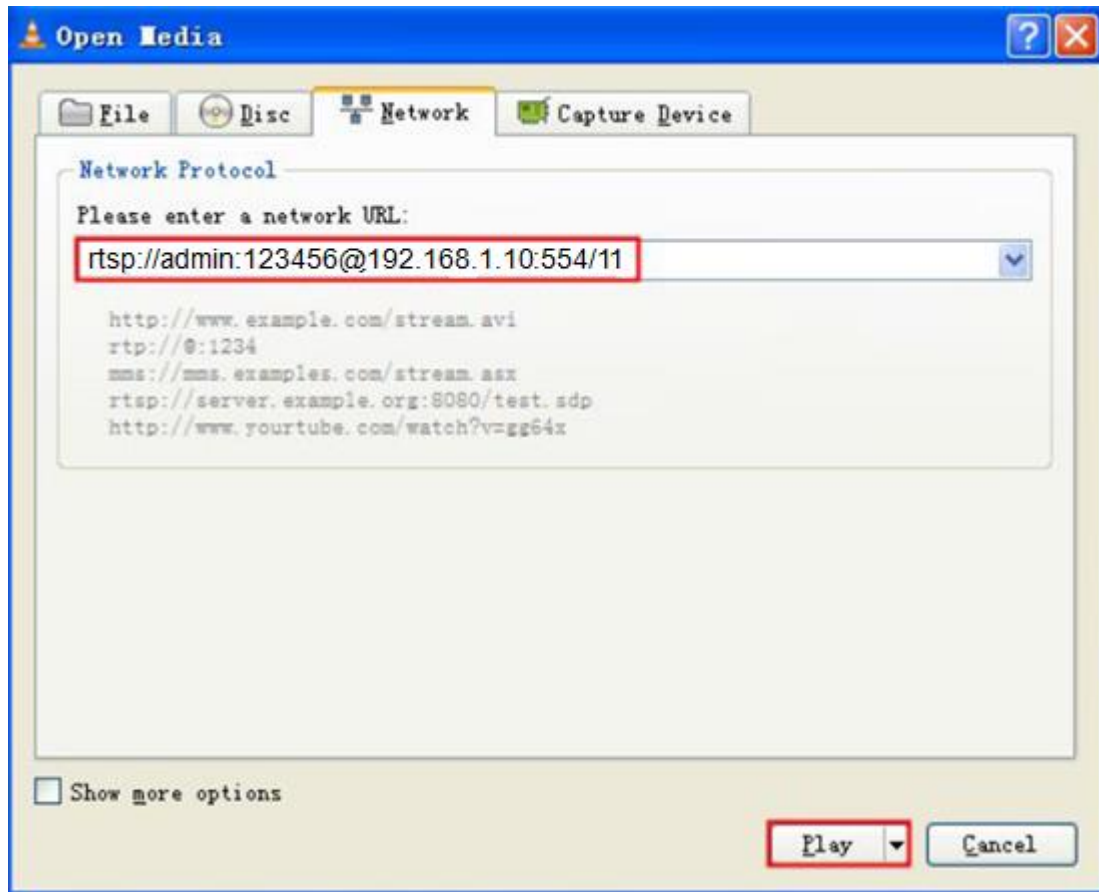
For example: rtsp://admin:123456@192.168.1.10:554/12

Follow these steps to access the camera's RTSP stream by VLC player:

1) Open the VLC player and go to "Media"/"Open Network Stream";



2) Enter the URL in VLC and click the play button.



3) You may need to enter the RTSP authentication if you did not input the username/password in your RTSP RUL.



4) Then you can view the video from the VLC player by now.



Note: you can also view the video remotely by the RTSP stream if you have the right DDNS or port mapping and forwarding.

4 App for Mobile Device

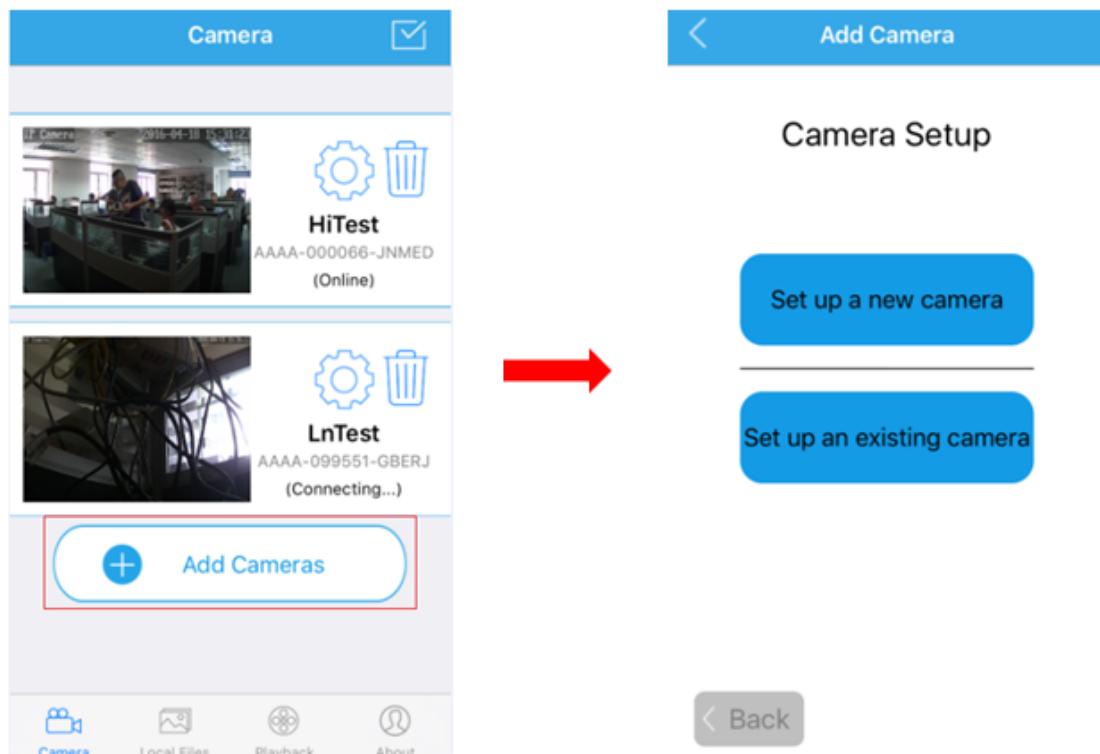
To access your camera from a mobile device, please search and install “**Dericam**” App in App Store or Google Play. For Android device, you can also download this “Dericam” App from www.dericam.com.

Note: In this guide, we take iOS device as example for interface reference. The App Interface may differ slightly from the screenshots below as updates are released.

Note: If you have a dual band router, and your camera is not connecting to your WiFi network, please make sure you did not set 5G wifi to your camera. It supports 2.4G only.

4.1 Add Camera

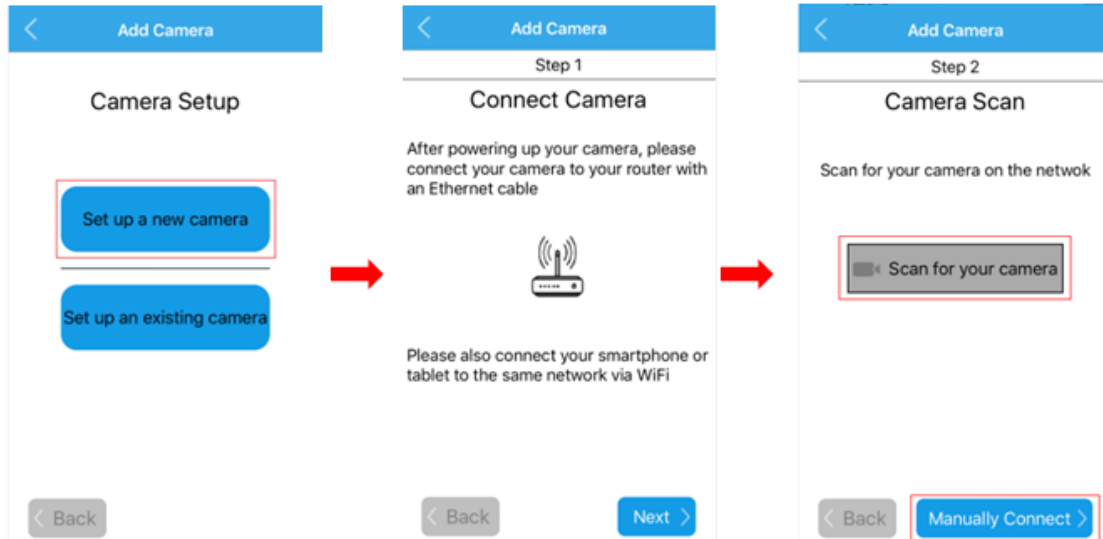
You can go to the camera list page to find a “+ Add Camera” to add cameras into your App. There are 2 methods to add camera. The first one is “Set up a new camera”, it is used to add camera which is just reset to factory setting or you just get the camera from the package. You can change the initial password of the camera and set wifi settings to your camera through this method. It is usually used for the first time you want to setup this camera. The second one is “Set up an existing camera”, it means to add the camera you set up before, for example you have already set up your camera in another smartphone or web. For the second method, you can search and add the camera directly, no need to change the password or set the wifi configuration.



4.1.1 Set up a new camera.

If you are the first time to set up the Dericam camera, or you just reset your camera. Please click the button “Set up a new camera” to add it into your mobile device. Please power up your camera first, and connect your camera to your router with an Ethernet cable. After you connect your mobile device to the same local network, then you

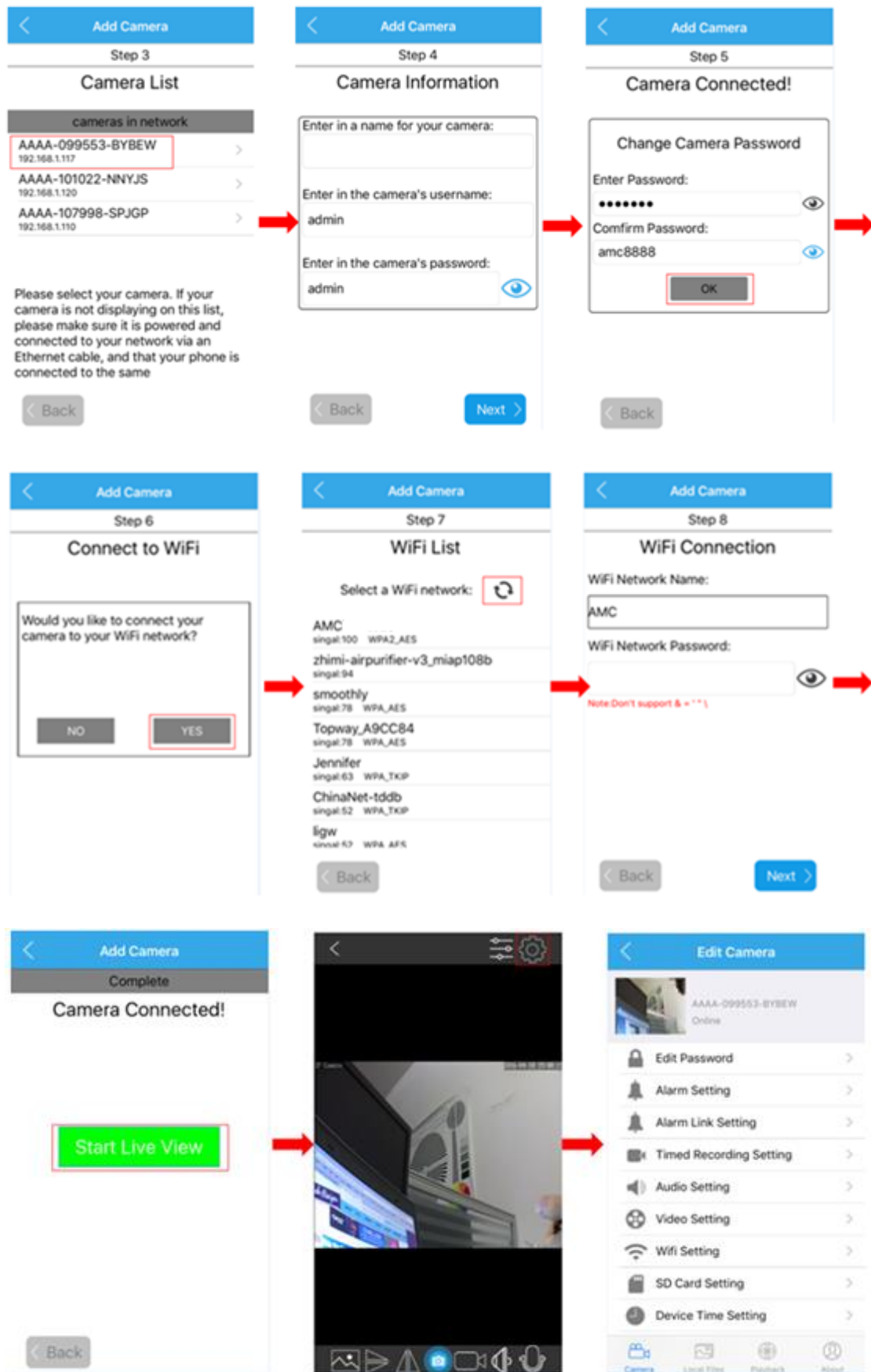
can go to add your camera into the App by scanning the camera in the LAN or by entering its UID by manual. We do recommend you to scan and add the camera in your local network, so you do not need to input the UID which is a long identify and hard to remember.



1. Scan for your camera

Once you chosen to add the camera by scanning, you can follow the NEXT or text instructions to complete the process of adding camera. Here are the screenshots to show how to add the camera by scanning.

- Select the camera you want to set up from the camera list you get by scanning.
- Give your camera a name, and enter right username and password to access it. The default username/password is admin/admin.
- Change the initial admin/admin username/password for the consideration of account security. Give your camera a private username and password that known only by you, and keep it secret.
- If you want to configure the wifi in this set up process, you can choose **YES** to connect it to your wifi, or you can choose **NO** to start the live view directly. You can also configure your wifi in the wifi setting page after you added the camera into your App if you do not want to configure it in this step.
- Please click the refresh icon to search the wifi AP list again if you did not find the wifi SSID you want.
- Please input the right password of your wifi, and click next to set it into your camera.
- Then you can start live view of your camera and complete this set up process, and you can access and control your camera now.



2. Manually connect

Once you chosen to add the camera by manual, you can follow the NEXT or text instructions to complete the adding process. Here are the screenshots to show you this process.

-Enter in your camera's UID first, you can find it on the sticker of your camera's bottom or side. Give your camera a name, and input right username and password to access it. The default username/password is admin/admin.

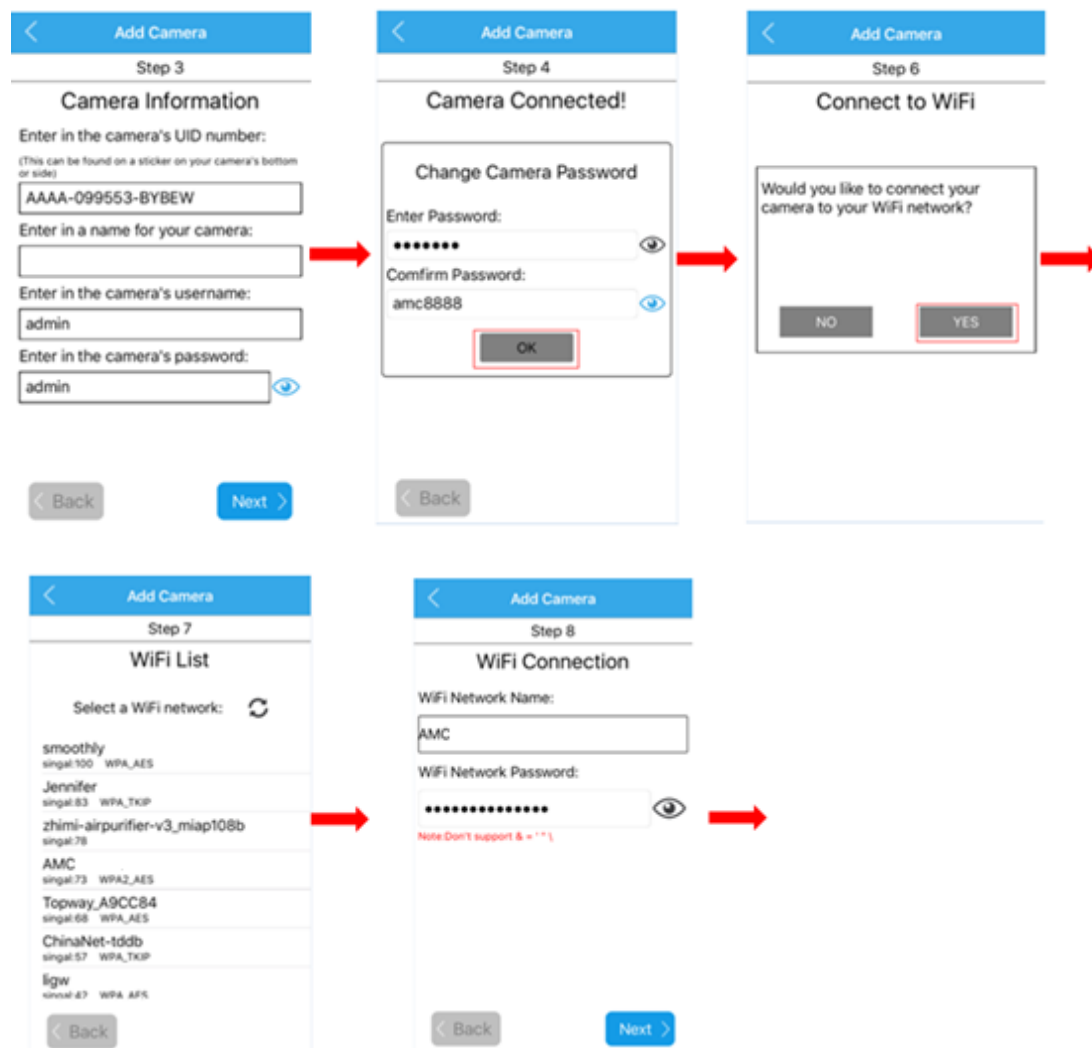
-Change the initial admin/admin username/password for the consideration of account security. Give your camera a private username and password that known only by you, and keep it secret.

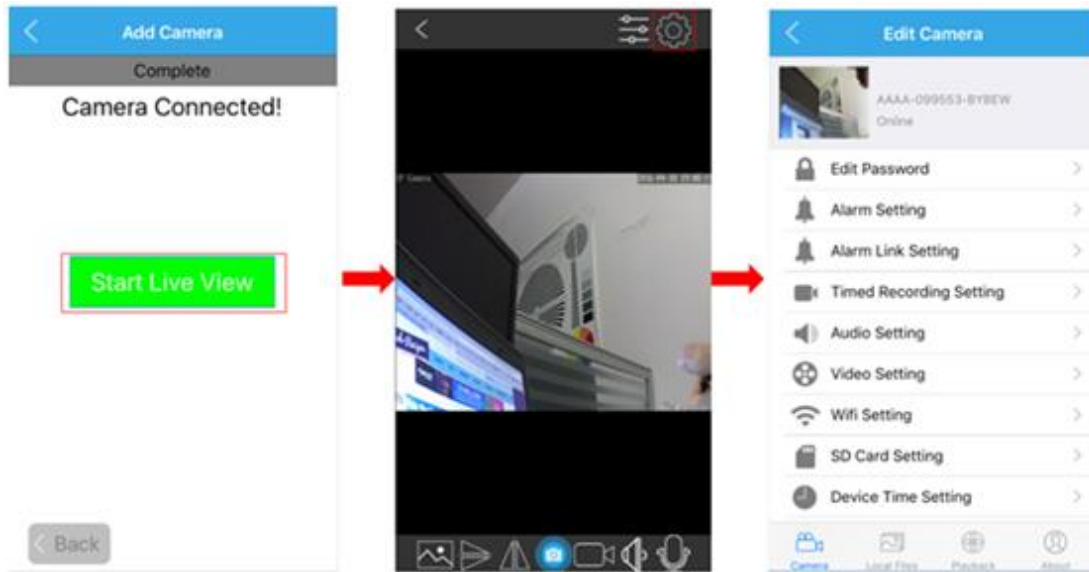
-If you want to configure the wifi in this set up process, you can choose **YES** to connect it to your wifi, or you can choose **NO** to start the live view directly. You can also configure your wifi in the wifi setting page after you added the camera into your App if you do not want to configure it in this step.

-Please click the refresh icon to search the wifi AP list again if you did not find the wifi SSID you want.

-Please input the right password of your wifi, and click next to set it into your camera.

-Then you can start live view of your camera and complete this set up process.



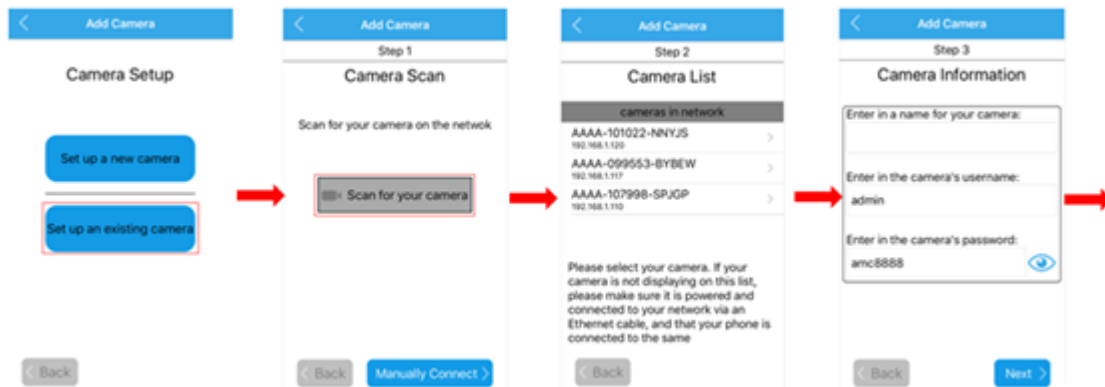


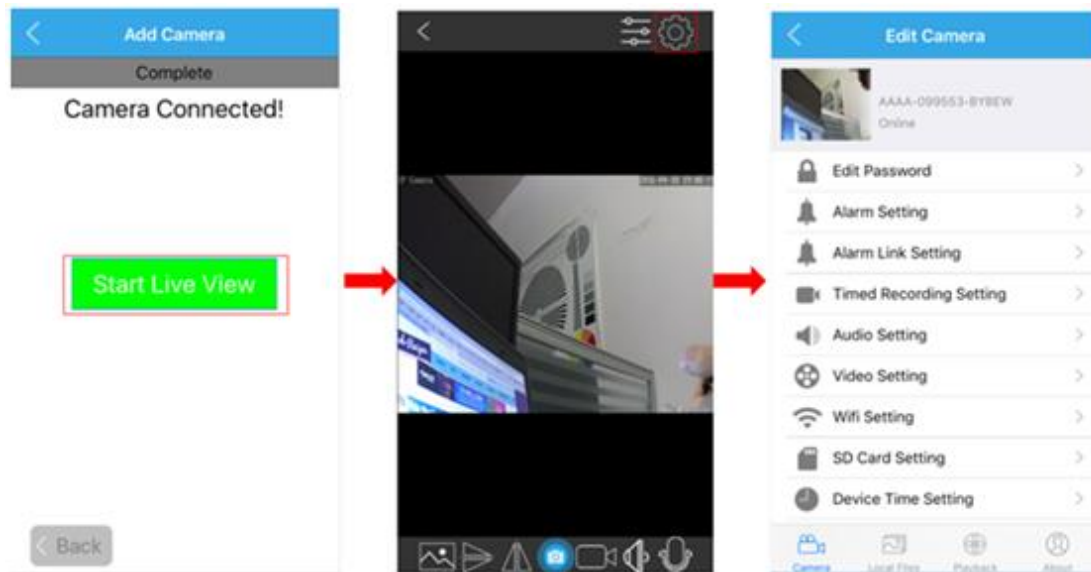
4.1.2 Set up an existing camera.

For the Dericam camera you have added or accessed before, you can click the button “Set up an existing camera” to add it into your mobile device. There are also 2 ways to add it, by scanning or by manual. We do recommend you to scan and add the camera in your local network area, so you do not need to enter the UID which is a long identifie and hard to remember.

1. Scan for your camera

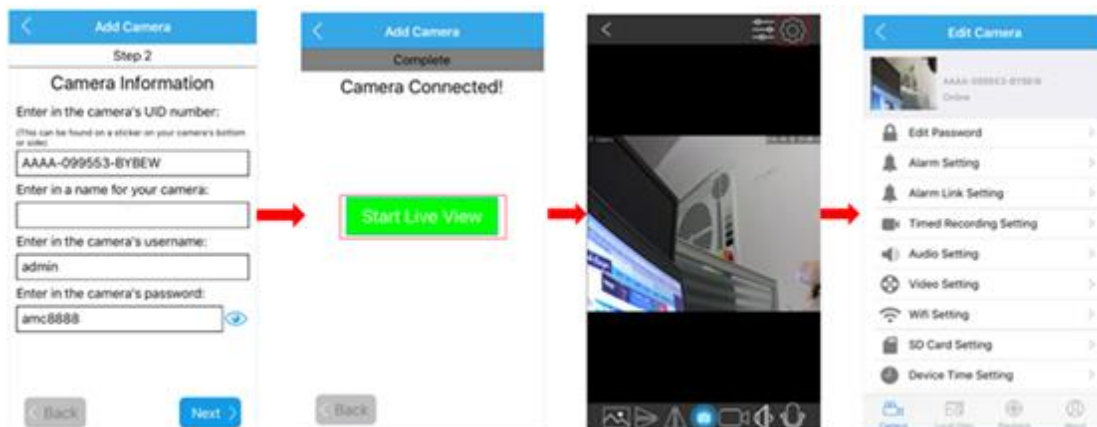
- After click the scanning button to search the Dericam camera in your local network area, you can get a camera list. Please select the camera you want to set up.
- Give you camera a name, and enter in its right username and password.
- Then you can start the live view and go to the setting page to access or control it.






2. Manually connect


If you want to add this existing camera to your mobile device by manual, please click the button “Manually Connect”. Enter in your camera’s UID, username and password, you can also give it a new name you like. Then you can start the live view and go to the setting page to access and control your camera.




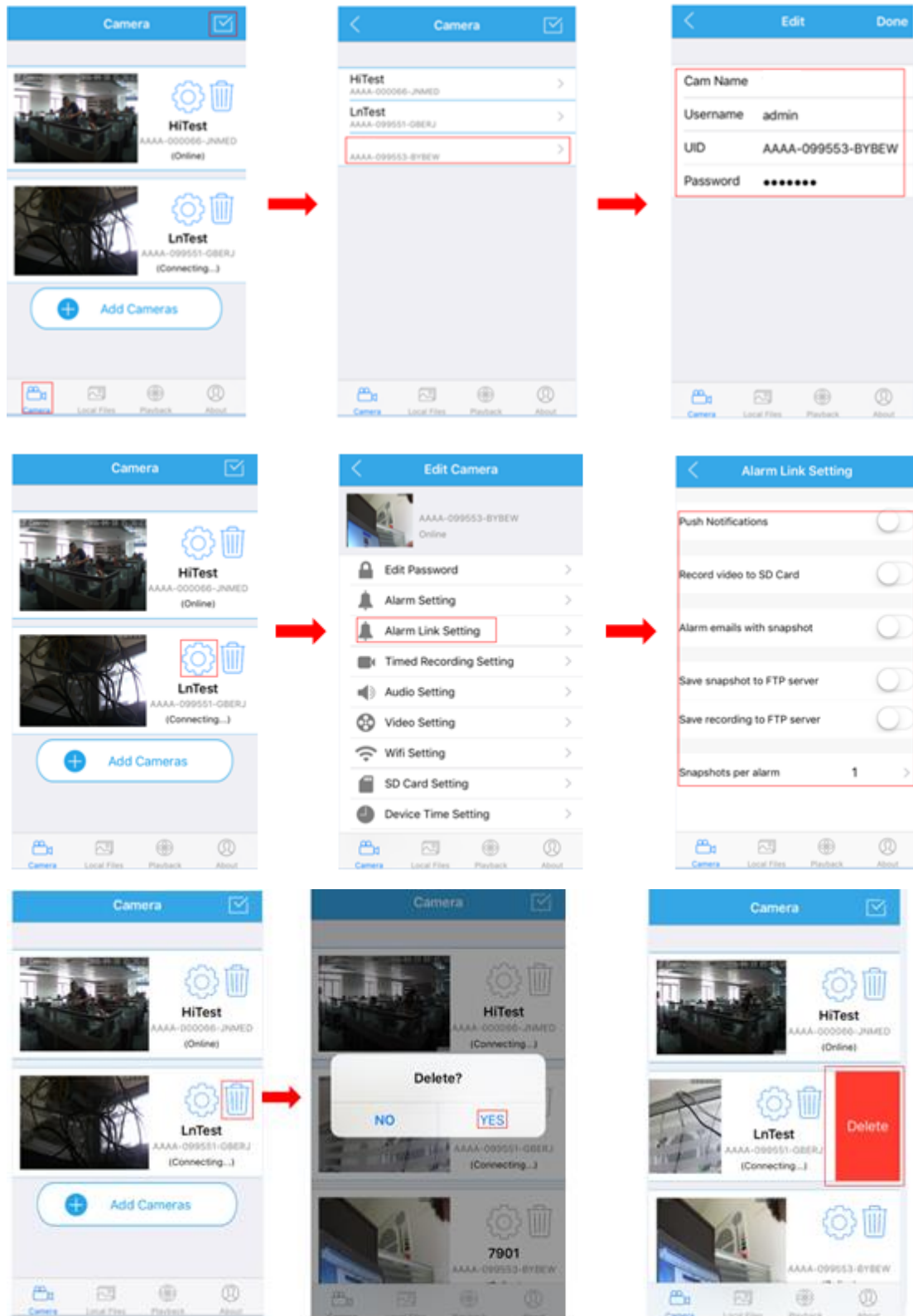
4.2 Camera list page

You can go to the camera page to check the cameras you have added. You can also delete or edit the login information for the cameras in the list.

-Click the edit icon  to edit the camera login information. For example, you can change the camera’s name in App or modify the camera’s username or password if you could not login your camera, even the UID.

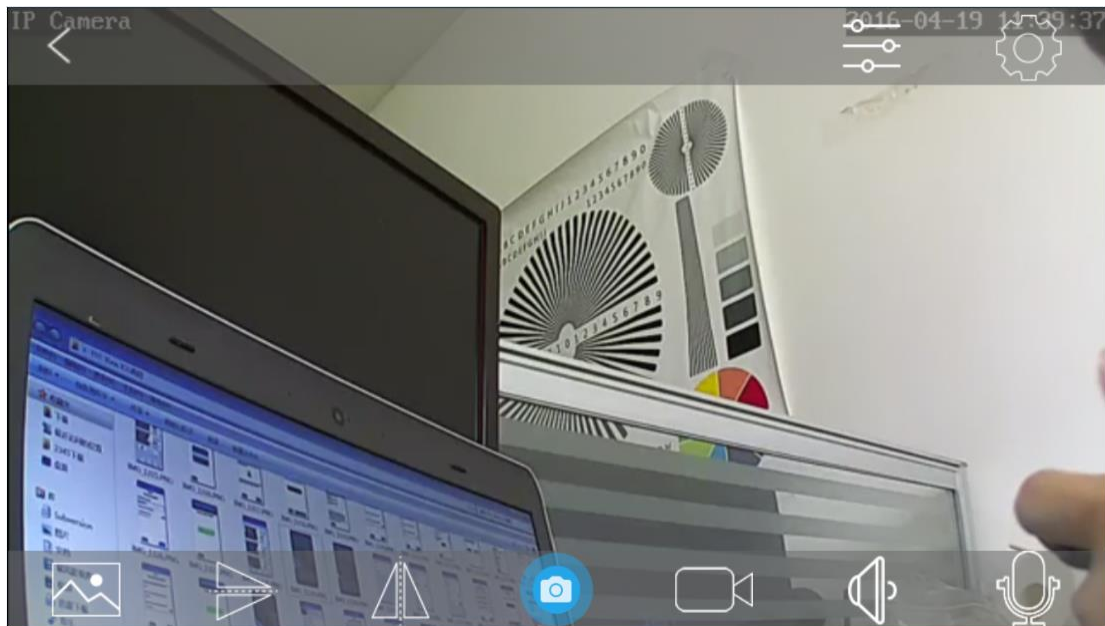
-Click the tooling icon  to enter the setting page, then you can edit all your camera’s settings, include Edit Password, Alarm Setting, Alarm Link Setting, Timed Recording Setting, Audio Setting, Video Setting, Wifi Setting, SD Card Setting, Device Time Setting, Email Setting, FTP Setting, System Setting and Device Information. All of these settings will be explained in detail in next chapter.

-Click the trash icon  to delete the camera you want. For iOS device, you can also delete the camera you want by sliding the camera from right to left, then you can find a Delete button to delete it.



4.3 Live view page

After add the camera successfully, you can preview the video of your camera and set the configurations you want. This section will show you what the icons can do in the live view page.



-The **resolution** (Clear/Fluent)

The “Clear” standards for the first/main stream of the camera. The “Fluent” means second/sub stream of the camera. You can also change the default settings as you want in the setting pages.

-**Flip** the Video

-**Mirror** the Video

-**Snap picture** from the video and save it to your phone

-**Record video** by manual from the video and save it to your phone;

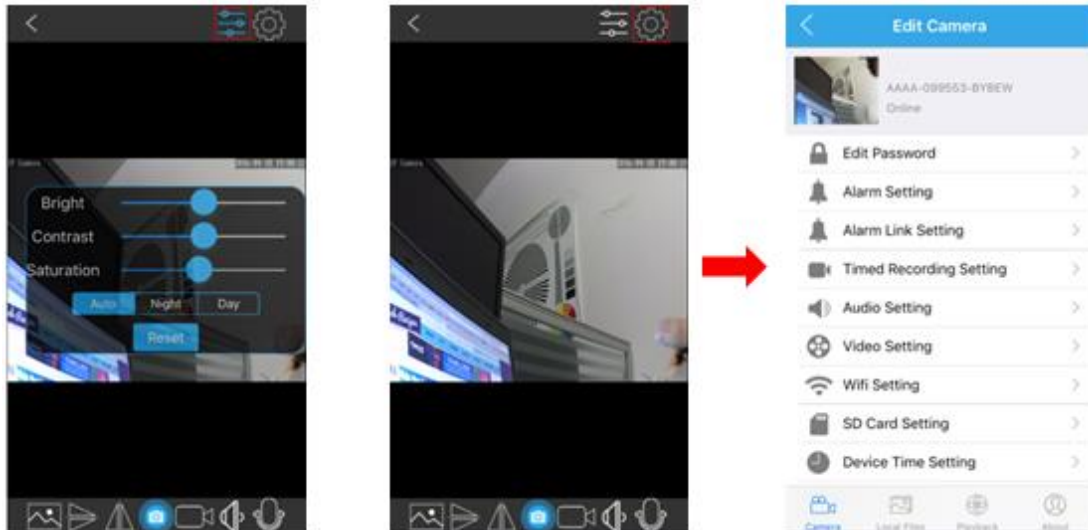
-**Audio** from the camera

-**Talking** to the camera ; By press and holding this icon, you can hear the voice from the camera or the audio out port by connecting an earphone.

-Set the **video parameters** of your camera, such as bright/contrast/saturation. And control the **LED status** of your camera by the icons of the model, such as auto/night vision/day vision.

-**Exit** , you can go back to the device list page by click the back icon .

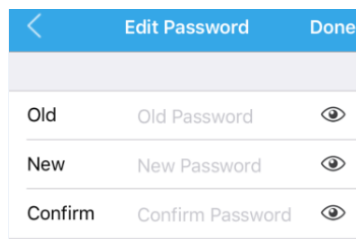
-**Settings** page , you can go to the settings page by click the icon of settings.



4.4 Settings pages

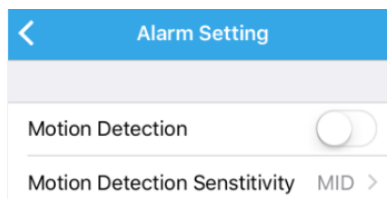
4.4.1 Edit Password

You can change the password of Dericam camera in this page.



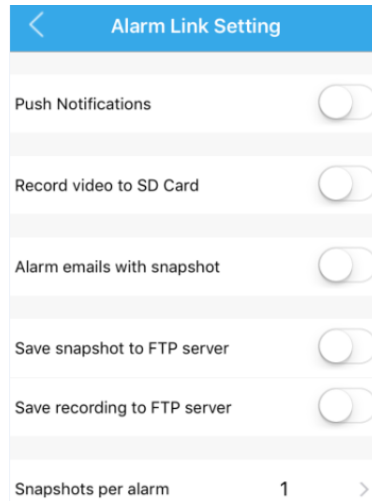
4.4.2 Alarm Settings

You can set the configuration about motion-detection alarm of the camera in this page, such as enable or disable the alarm, set the sensitivity of the motion-detection like low/medium/high.



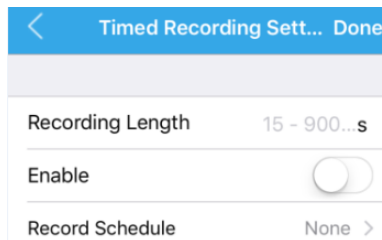
4.4.3 Alarm link settings

You can enable the linked actions once the alarm is triggered in this page, include the Push Notifications to your smartphone, record video to the SD Card, alarm emails with snapshot, save snapshot or recording to FTP server, and the count for the snapshot.



4.4.4 Timed recording settings

You can set the scheduled recording settings in this page, include the recording length.

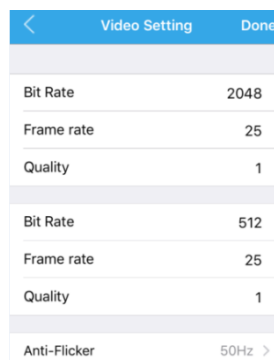


4.4.5 Audio settings

This wifi bullet camera does not support the audio feature.

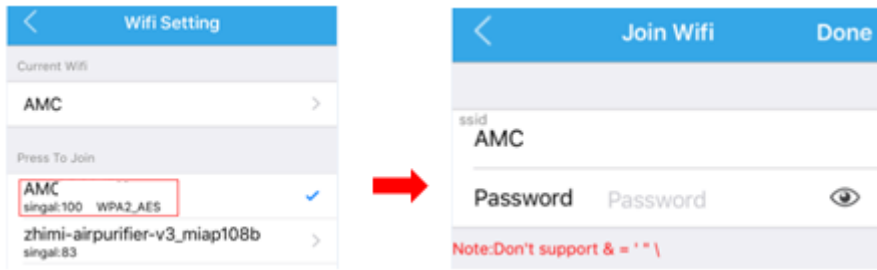
4.4.6 Video settings

You can set the configuration about video encoding for the first/second stream in this page, like bitrate/frame rate and video quality. The top one is for first stream, the second one is for second stream.



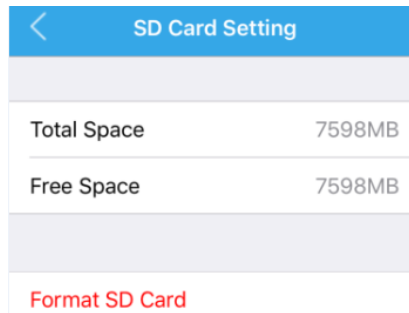
4.4.7 Wifi settings

You can search the wifi in the LAN and set it to your camera in this page.



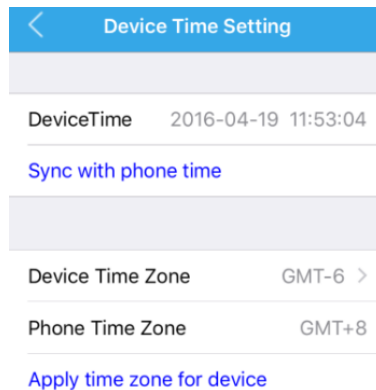
4.4.8 SD Card settings

You can get the space information about the SD Card in your camera and format it in this page.



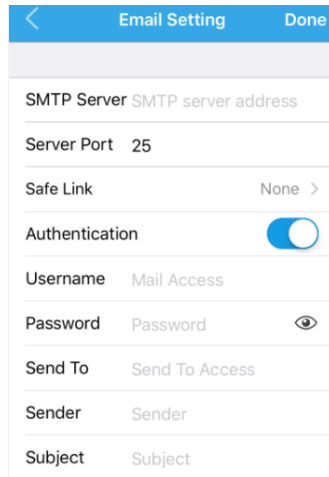
4.4.9 Device time settings

You can set the time of your camera to sync it with your smartphone in this page.



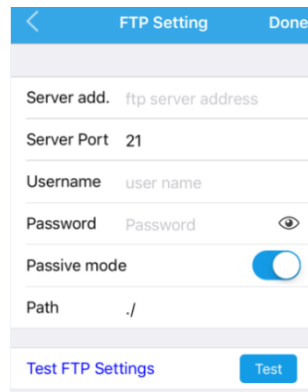
4.4.10 Email settings

You can set the email information in this page to enable the email alarm actions. Here is a test button for you to check the connection of the email settings, please save your settings and test it before you complete the email settings to make sure your email setting will work successfully.



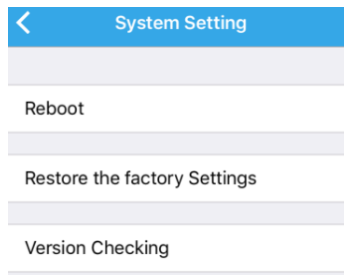
4.4.11 FTP settings

You can set the FTP account information for the video recording or alarm linked actions in this page.



4.4.12 System settings

You can reboot, restore the camera in this page. And there is an icon “Version checking” for you to check the latest firmware for the camera and upgrade it online.



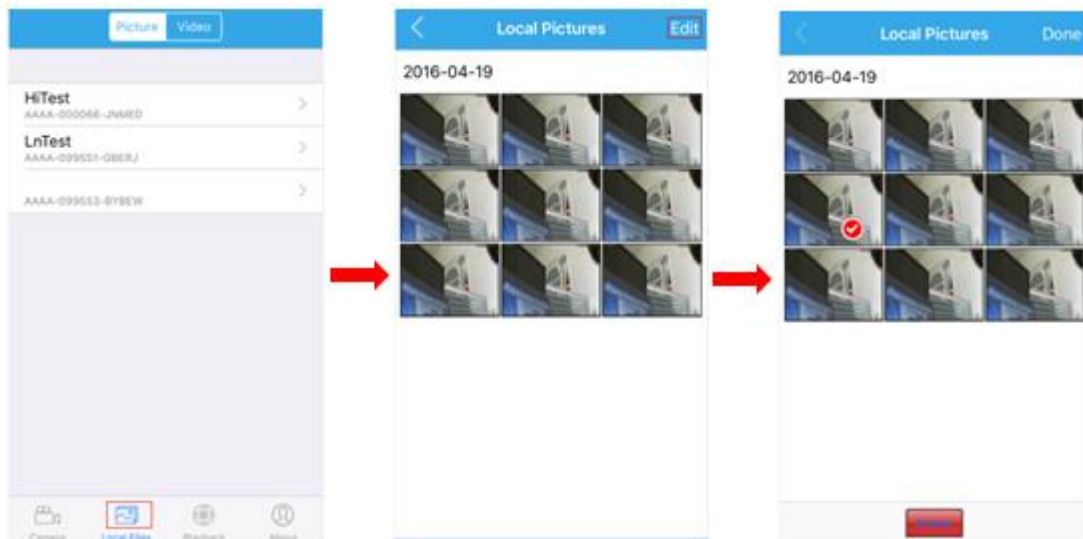
4.4.13 Device information

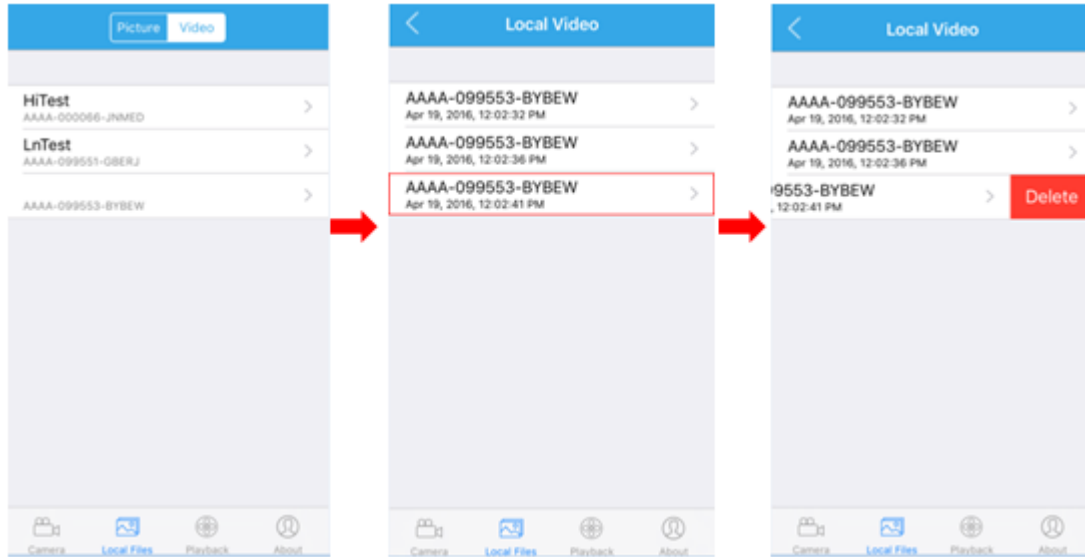
You can obtain the information about the camera in this page.

Device Information	
Device ID	181Au
Network	WLAN
Current Client	0
Soft Version	V7.1.4.1.7
IP Address	192.168.1.112
Subnet Mask	255.255.255.0
Gateway	192.168.1.1
DNS	192.168.1.1

4.5 Local files page

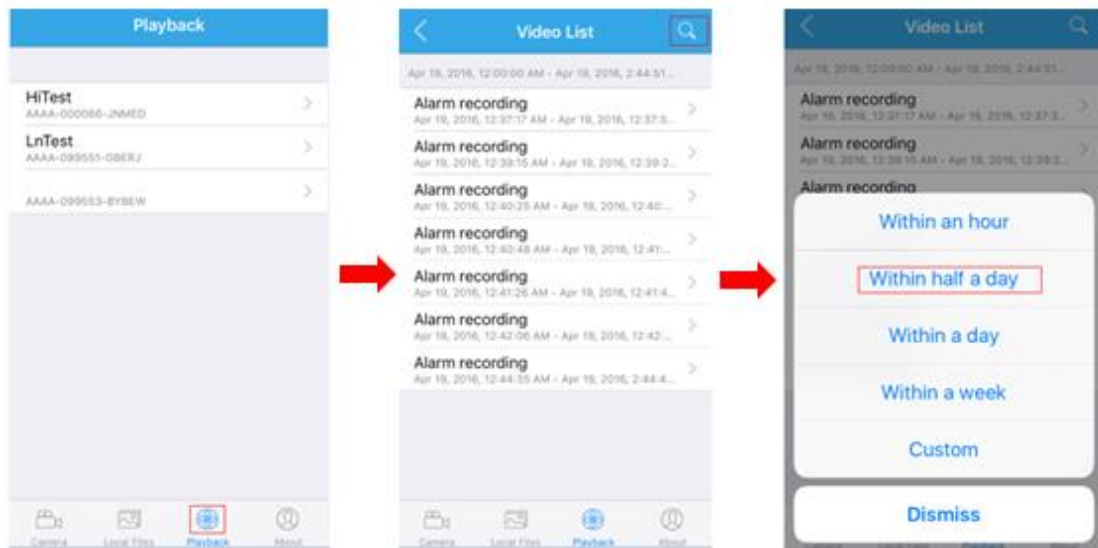
You can browse the pictures and videos saved in your smart phone in this page by clicking the chosen file. And you can delete these files if you want. For the video file you can delete by sliding the file you choosing from right to left.





4.6 Playback page

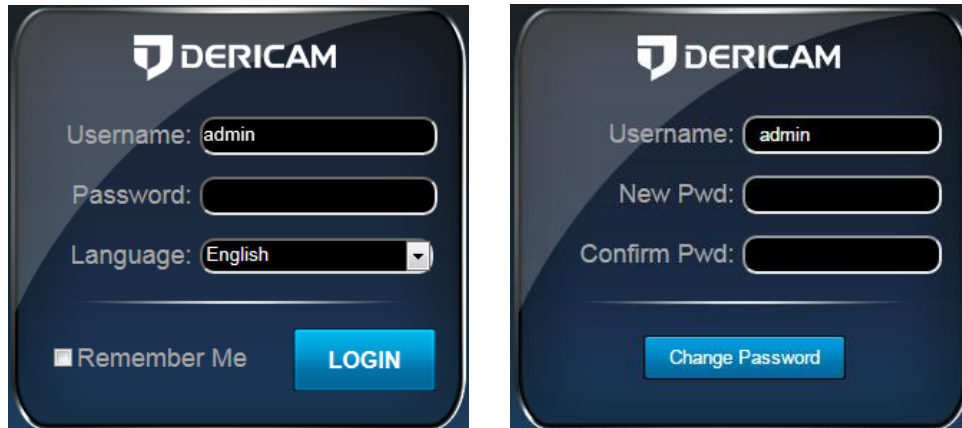
You can browse the recording stored in the SD Card of the camera in the playback page and playback it remotely by click the video file from the list. And you can also filter the files by assigning an exact recording time.



5 Web User Interface for operation

Here details the Dericam camera's user interface for web browser, as well as all of the operations the camera can perform, including the Login, LIVE, PLAYBACK and CONFIG pages.

5.1 Login page

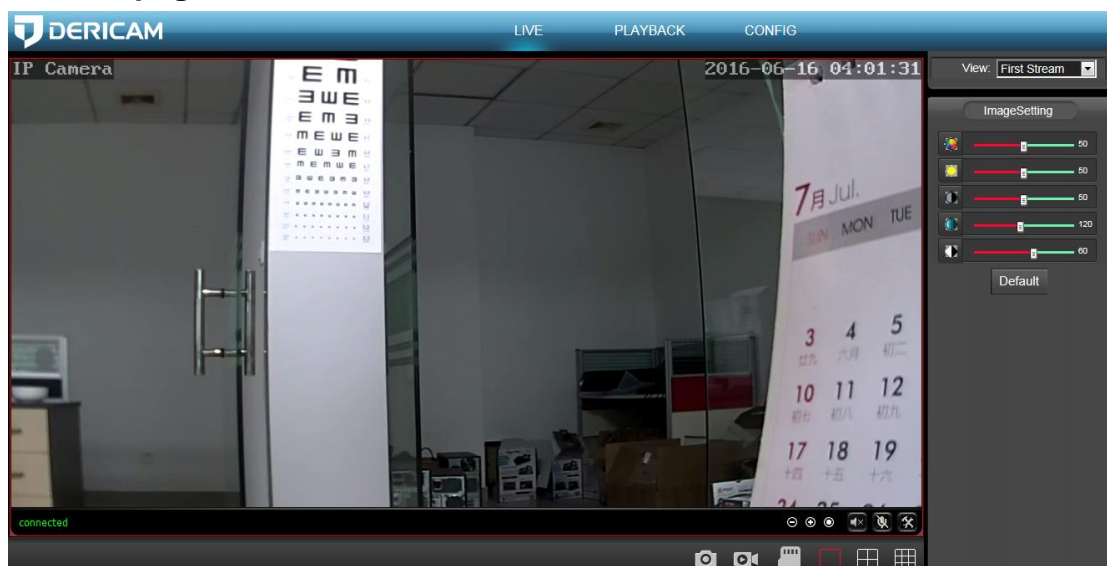


Username and Password: It is the account of your camera, the default username/password is admin/admin.

Language: You can click on the language dropdown list to select the language for the web UI.

Note: When setting up your camera for the first time, it will force you to modify the default password to enhance the security of the camera, please enter the new password and confirm it. Then you can access your camera by the new password in the future once you saved your settings.

5.2 Live page

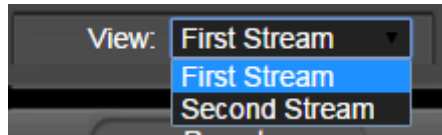


5.2.1 OSD

-Camera Name: IP Camera

-Camera Date & Time: 2016-01-25 21:51:15

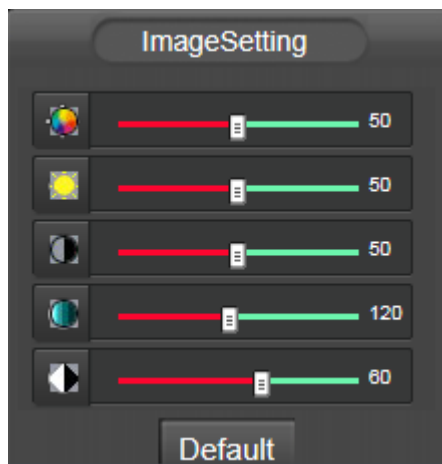
5.2.2 View



First Stream: the main stream.

Second Stream: the sub stream.

5.2.3 ImageSettings



You can set the color parameters for the video image in this “ImageSet”, such as Hue, Brightness, Contrast, Saturation, Sharpness.

: Hue.

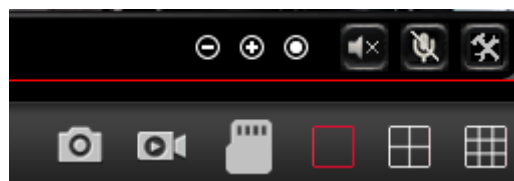
: Brightness.

: Contrast.

: Saturation.

: Sharpness.

5.2.4 Tool bar





: Zoom in/Zoom out/Back to original size, 1x/1.5x/2x/3x.



: Open/Close the audio.



(Only for IE/Firefox browser in windows): Enable/Disable the talking.



(Only for IE/Firefox browser in windows): Set the storage path to save the picture captured by manual through the web browser, or save the video recorded by manual through the web browser. It will pop up a folder browser windows for you to select the folder path in your computer.

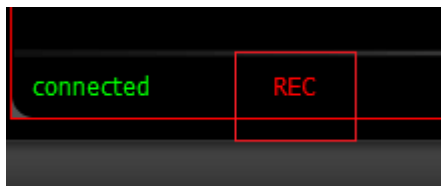
Note: If your windows OS is windows 10, please run the web browser as administrator, or it will forbid you to generate the folder in your computer, then you will be failed to snap pictures or record video through the web browser.



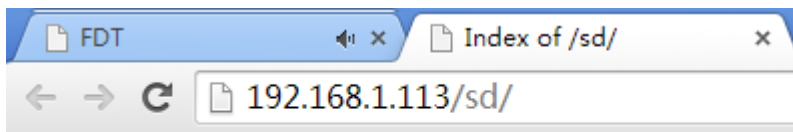
(Only for IE/Firefox browser in windows): Capture pictures by manual.



(Only for IE/Firefox browser in windows): Record video by manual. There will show you a red "REC" icon if you enable the manual recording.



: This icon is for you to browser the content of the SD card in your camera, such as pictures or video recordings. You need to go through the authentication of the username/password of your camera to browser your SD card in the camera. You can also edit the contents in your SD card like delete files or download files through this icon.

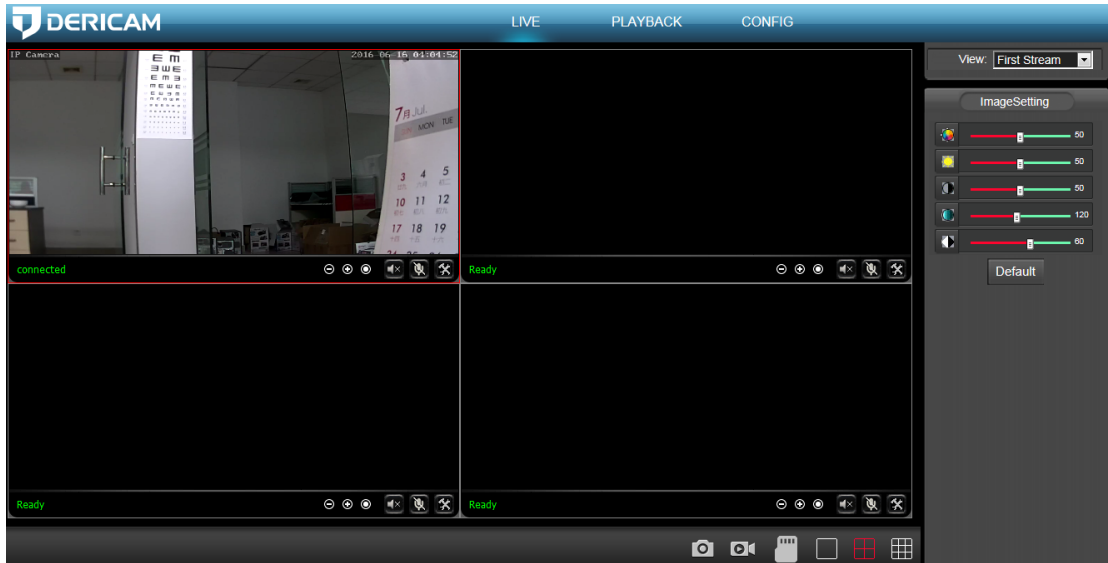


Index of /sd/

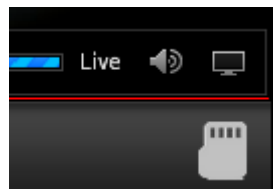
<u>Name</u>	<u>Modified</u>	<u>Size</u>
Parent directory	-	-





(Only for IE browser in windows): These icons are used to show you multiple-devices in your local network at the same time. If you have multi Dericam cameras, you add them to the multiple-device page, then you can view them all at the same time.



Note: For the Chrome in windows and Chrome/Safari in Mas, there are something limitations for the plugins. They have different tool bar show as below and some features are forbited.

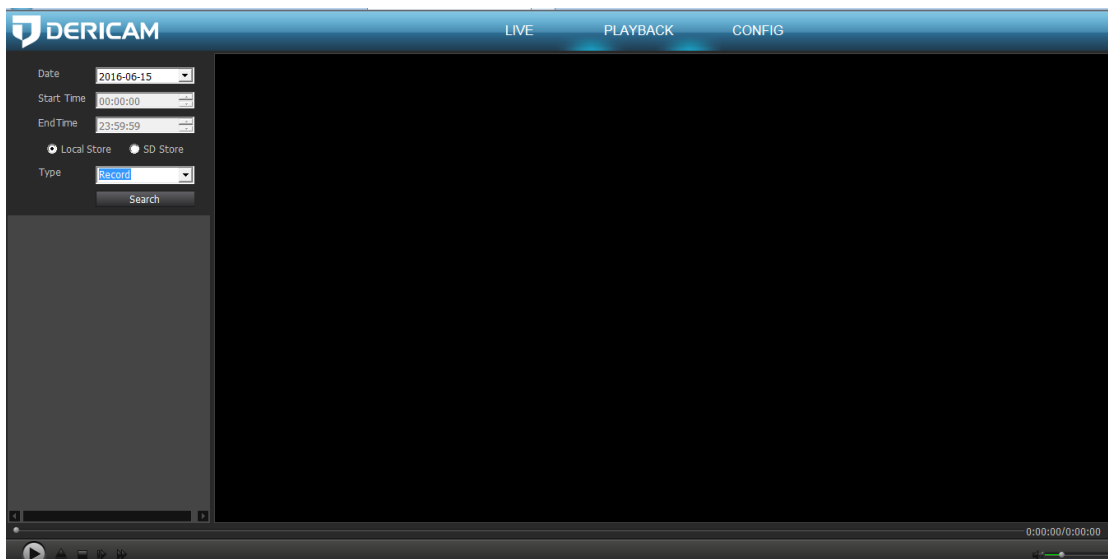


: Open/Close the audio.

: Enable the full screen for the live view video.

5.3 Playback page(Only for IE/Firefox browser in windows)

5.3.1 Search and playback videos



In the playback page, you can browser the videos/snapshots in your SD card or local computer hard disk recorded by the motion alarm or schedule or the videos stored in your computer recorded by manual. You can search these videos by date and time, then playback them online.

5.3.2 Tool bar



There is a tool bar in the playback page for you to control your playback as your wish.



: Play or Pause the playback process.



: Open the local file in your computer to playback.



: Stop or close the playback process.



: Playback next frame in the video.



: Adjust the audio volume when you playback the recordings.

5.4 Configuration page

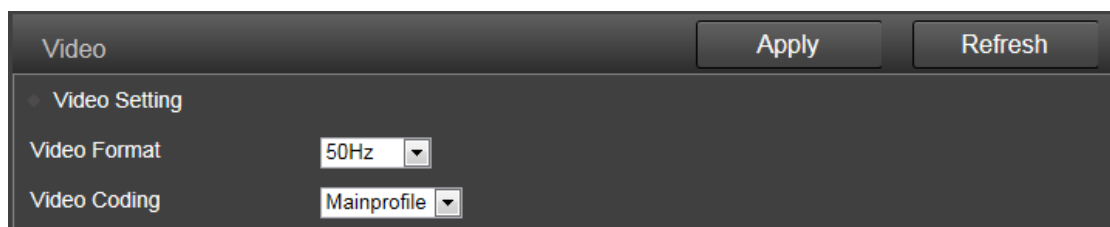
Here you can set configurations for all features of the Dericam camera, please click the “Apply” button to save your settings, click the “Refresh” to query or refresh the current configuration in your camera.



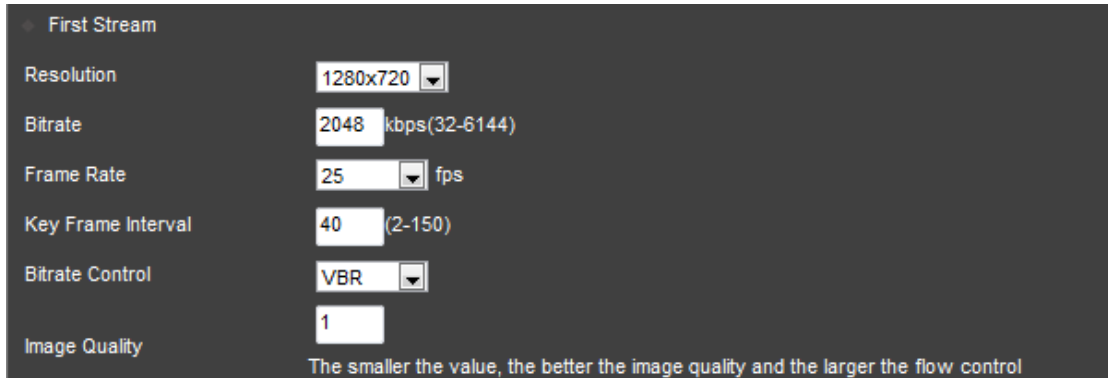
5.4.1 Media settings

1) Video

Here you can set the configurations for power frequency and the encoding profile for H.264. For the power frequency, 50Hz used for the region Europe and China, 60HZ used for the region USA and Canada.



Here you can set the configurations about the stream for both first and second stream in your camera, such as the resolution, bitrate, frame rate, key frame interval, bitrate control and the image quality level.

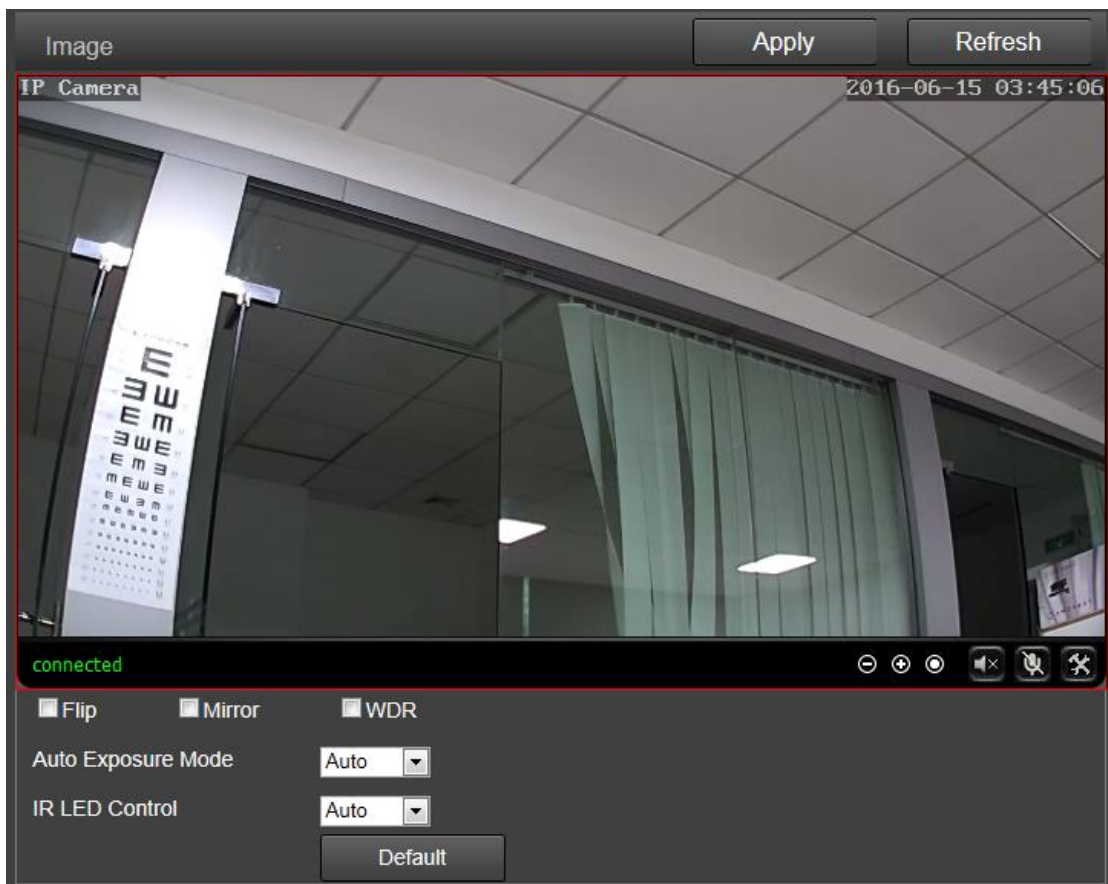


Here you can enable/disable the OSD for camera time or name, and modify the camera name to what you like.

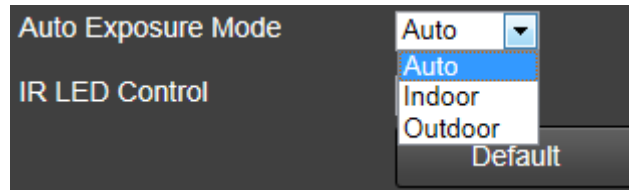


2) Image

Here you can control the camera video status, such as mirror the video, flip the video, enable/disable the WDR.



Here you can set an appropriate exposure mode for your camera, such as indoor, outdoor or let it change automatically as the change of the working environment.

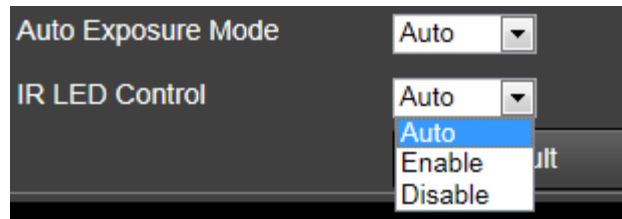


Here you can control the LED light status:

Enable-Camera works at the night vision status always.

Disable-Camera works at the day vision status always.

Auto-Camera will change between the day and night vision status automatically according to the change of the outside light.



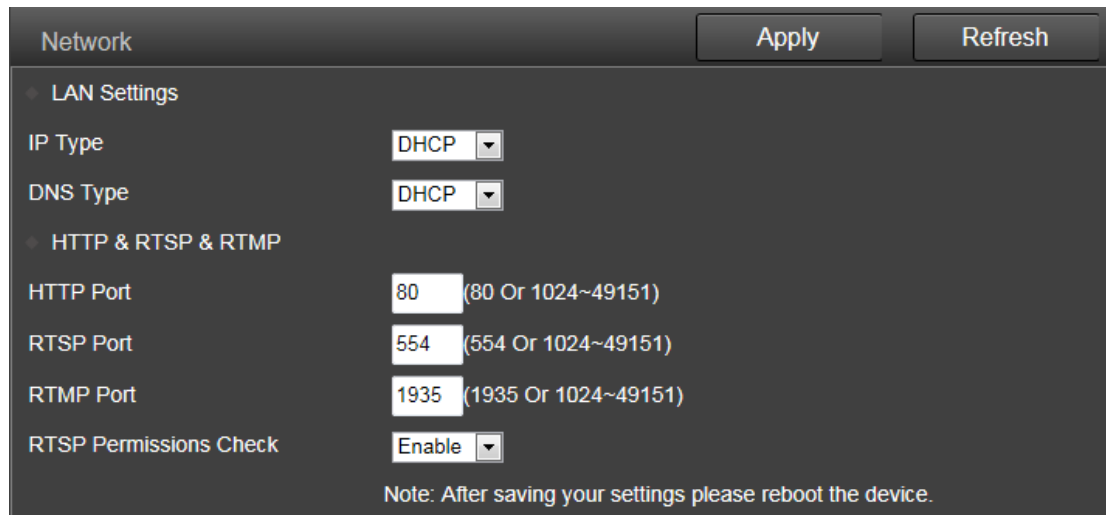
Note: To reset the default settings, please click the “Default” button.

5.4.2 Network

1) Network

Here you can set the IP address information like DHCP or Static and the port for HTTP/RTSP/RTMP.

Note: Please keep the type for IP and DNS are the same, both are the DHCP or Static



2) Wireless

Here you can search the WIFI AP around your camera, then select and apply one of them to your camera. Please make sure you enable the wifi before you start to use it.

You can also check your settings by click the “Check” button after you save your settings.

Wireless
Apply
Refresh

Enable Wireless Disable ▾

SSID Search

Security Mode None ▾

WPA Algorithm TKIP ▾

Key 👁

Re-type key 👁

Check Wireless Settings Check

Please click the apply button first then try again.

Scan

	Single	SSID	WPA Algorithm	Security Mode	Channel
Apply	100	icongo-cb2543	NONE	OPEN	8
Apply	100	sec	AES	WPA2-PSK	11
Apply	78	se	AES	WPA2-PSK	7
Apply	37	TP-LINK_920182	AES	WPA-PSK	11

Note: The Dericam camera use the wired Ethernet cable by default, it will work on the wireless status automatically if you disconnect the Ethernet cable. But the wireless will not work if you still connect the Ethernet cable in your camera.

Please make sure you enabled the wireless, or the camera will not work on the wifi mode.

3) DDNS

Here you can set the third-party DDNS like Dyndns.org/3322.org/dynddns.us/No-ip.com and the status of the UPnP for your camera. You can get the public IP address of the LAN your camera works by click the “Query” button.

DDNS
Apply
Refresh

Internet IP Address Query

3P DDNS Enable ▾

Server Dyndns.org ▾

User Name

Password

Domain

UPnP Enable ▾

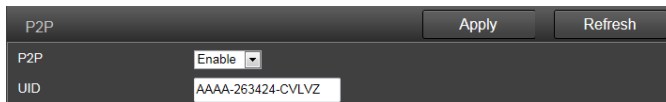
4) ONVIF

Here you can set the control configurations about ONVIF, such as enable status, port and privilege. You can configure these information as the needs of your NVR, so the Dericam camera can match your NVR best.



5) P2P

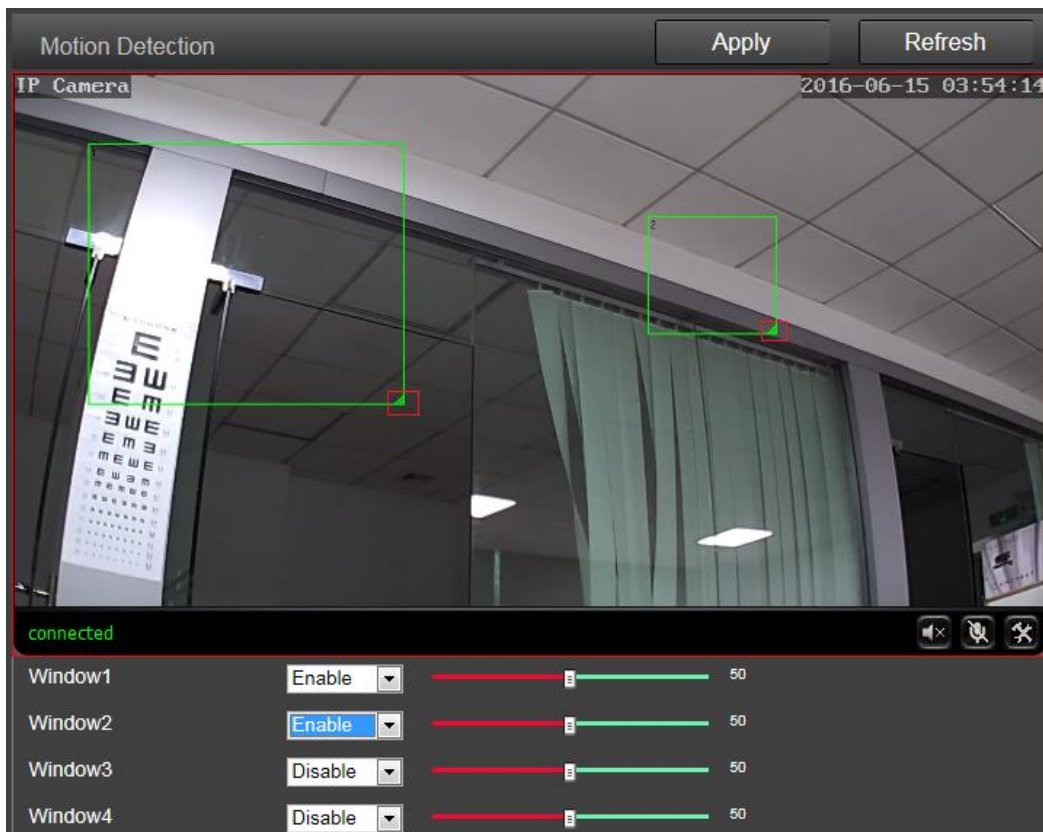
Here you can query the UID of your camera for P2P, and you can enable or disable the P2P feature of your camera as you need.



5.4.3 Alarm

1) Motion Detection(Only for IE/Firefox in windows)

Here you can set the areas for the motion detection and the sensitivity of each area. You can enable or disable each of the area, or change the size of each area by dragging the bottom right corner of the setting window of square, or change the position by dragging the setting window through your mouse.



2) Alarm link

Here you can enable or disable the alarm actions once the alarm triggered, including send email with picture, save alarm picture or video to SD card or FTP server, go to one certain preset point and also the picture numbers for capturing.



Alarm Link Apply Refresh

Linkage Settings

Email alarm with picture

Save Picture to FTP

Save Video to FTP

Note: Please insert SD card first, or can't record to FTP.

Save Picture to SD card

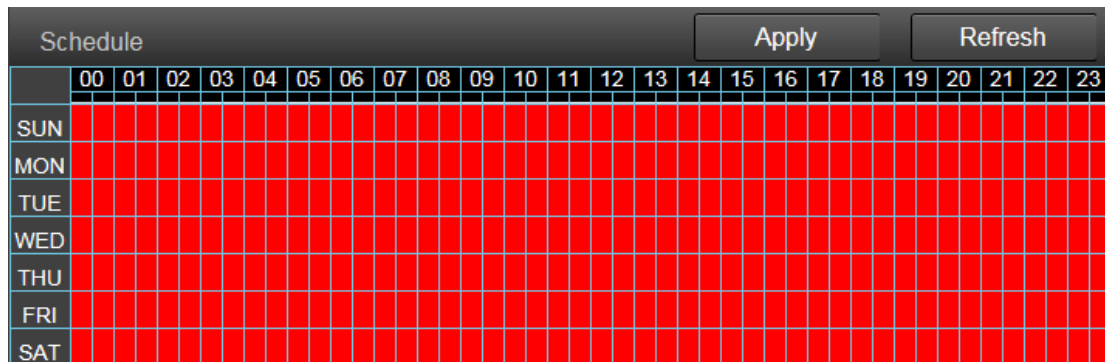
Save Video to SD card

Capture Image

Capture Image

3) Schedule

Here you can set the schedule for the motion detection alarm, red means enable and white means disable. You can select certain one or several days or hours you like to enable or disable the motion detection features.



Schedule Apply Refresh

	00	01	02	03	04	05	06	07	08	09	10	11	12	13	14	15	16	17	18	19	20	21	22	23
SUN	Red	Red	Red	Red	Red	Red	Red	Red	Red	Red	Red	Red	Red	Red	Red	Red	Red	Red	Red	Red	Red	Red	Red	Red
MON	Red	Red	Red	Red	Red	Red	Red	Red	Red	Red	Red	Red	Red	Red	Red	Red	Red	Red	Red	Red	Red	Red	Red	Red
TUE	Red	Red	Red	Red	Red	Red	Red	Red	Red	Red	Red	Red	Red	Red	Red	Red	Red	Red	Red	Red	Red	Red	Red	Red
WED	Red	Red	Red	Red	Red	Red	Red	Red	Red	Red	Red	Red	Red	Red	Red	Red	Red	Red	Red	Red	Red	Red	Red	Red
THU	Red	Red	Red	Red	Red	Red	Red	Red	Red	Red	Red	Red	Red	Red	Red	Red	Red	Red	Red	Red	Red	Red	Red	Red
FRI	Red	Red	Red	Red	Red	Red	Red	Red	Red	Red	Red	Red	Red	Red	Red	Red	Red	Red	Red	Red	Red	Red	Red	Red
SAT	Red	Red	Red	Red	Red	Red	Red	Red	Red	Red	Red	Red	Red	Red	Red	Red	Red	Red	Red	Red	Red	Red	Red	Red

5.4.4 Advance

1) User

Here you can edit the account information of the Dericam camera, such as change the username or password, the default account is admin/admin.



User Apply Refresh

Account Settings

User Name

Password

Confirm Password

2) Auto Snap

Here you can set the save path and time interval for the feature of capture pictures automatically. You can select to save the picture to SD card, FTP server or both of them.

Auto Snap
Apply
Refresh

Save Picture to SD card s

Save Picture to FTP s

3) Timed Recording

Here you can set the configurations for timed recording, you can enable or disable it, set the file size for each of the video, select the stream you want to record(first or second stream) and the time schedule.

Timed Recording
Apply
Refresh

File Recording Duration s

Enable Recording

Stream

	00	01	02	03	04	05	06	07	08	09	10	11	12	13	14	15	16	17	18	19	20	21	22	23
SUN																								
MON																								
TUE																								
WED																								
THU																								
FRI																								
SAT																								

4) Email

Here you can set the sending or receiving email for your email alarm.

Note:

SMTP port is usually set as 25. Some SMTP servers have special port, such as 587 or 465.

Authentication is used for transport layer security, it is usually none. If you use gmail and enable the authentication with TLS or STARTTLS, the SMTP port must be set to 465 or 587, it depends the authentication type you selected.

You can click the “Test” button to check whether your email settings is valid or not.

Email Apply Refresh


SMTP Server

Port

Authentication

Authentication Status

User Name

Password 

Send to

Sender

Subject

Message

SMTP Test

Please click the apply button first then try again.

5) FTP


Here you can set the FTP server configurations for your FTP storage for picture or video. You can click the “Test” button to check whether your settings is ok or not. Please make sure you have input the right folder path in your FTP server.

FTP Apply Refresh

Server

Port

User Name

Password 

Passive Mode

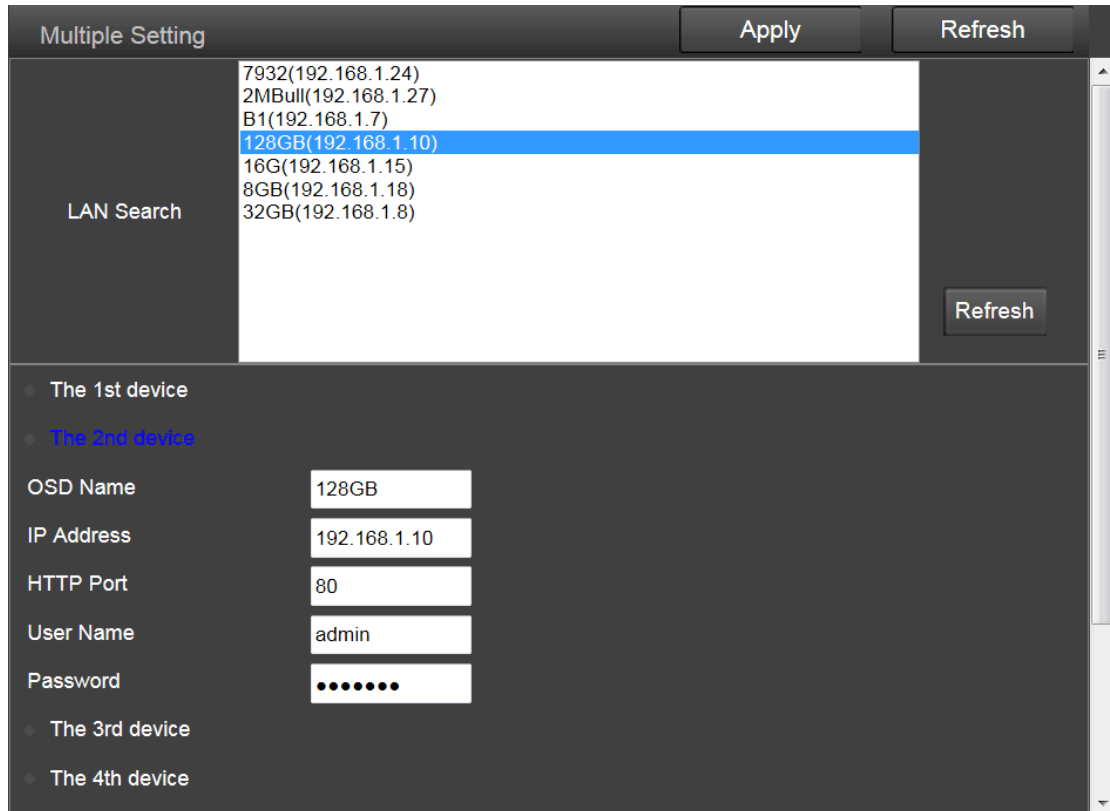
Path

FTP Test

Please click the apply button first then try again.

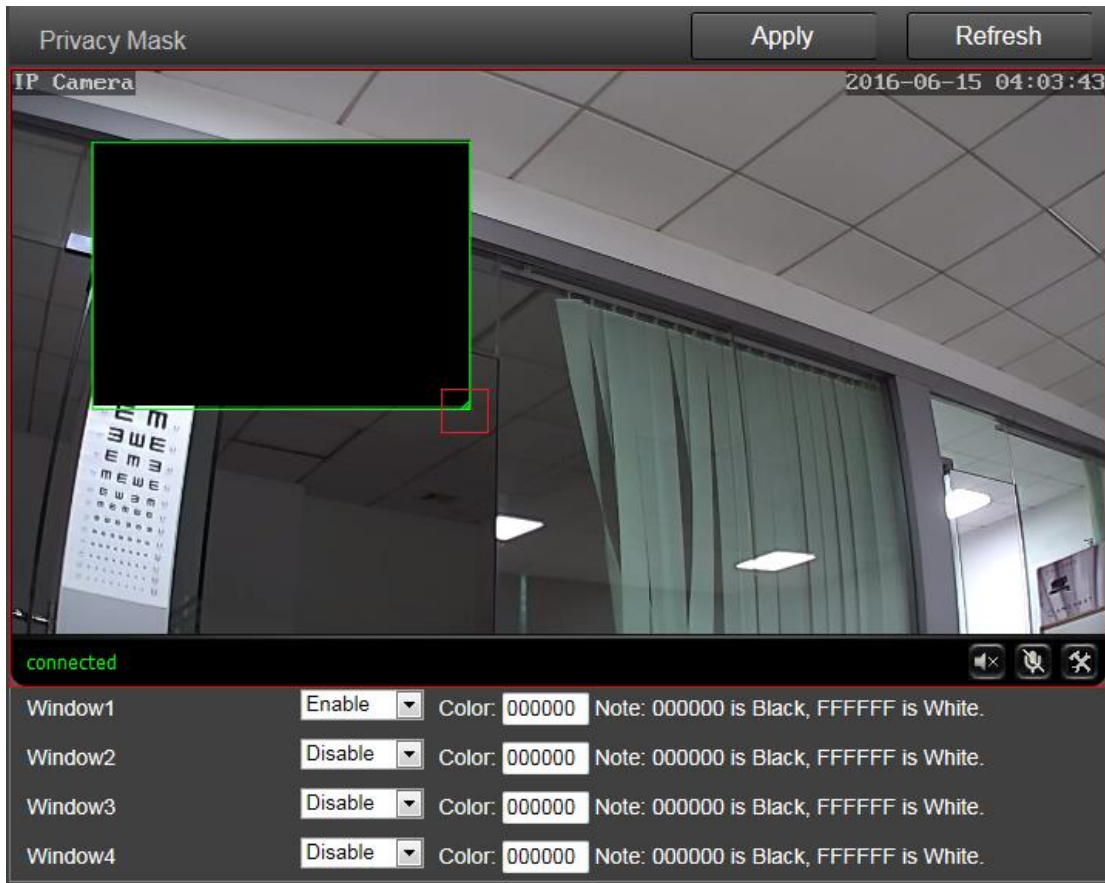
6) Multiple Setting(Only for IE in windows)

Here you can search the Dericam cameras in your LAN and add them into your multiple device group. Then you can view them at the live page together.



7) Privacy Mask(Only for IE/Firefox in windows)

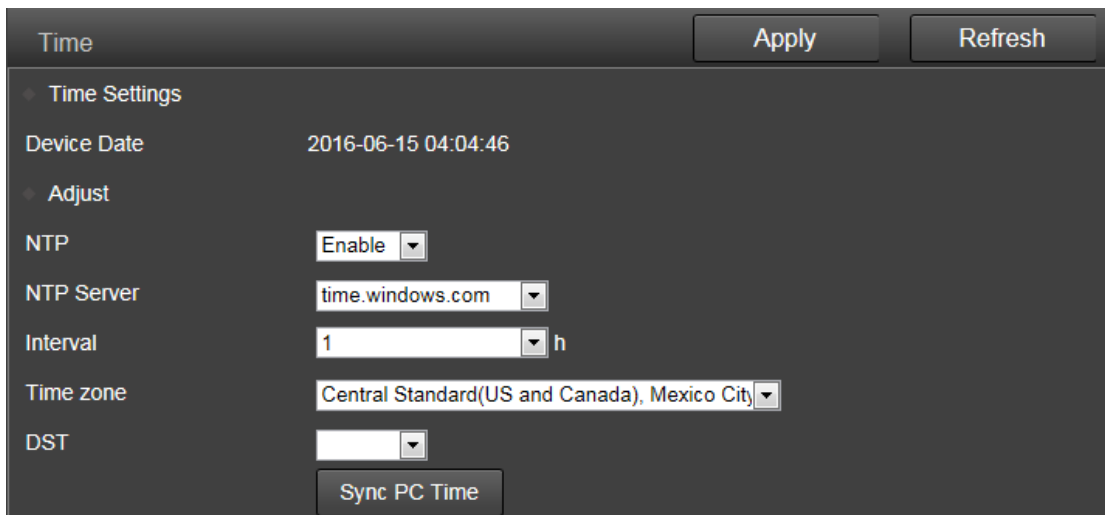
Here you can set the area and color for the privacy mask of your camera, it up to 4 areas. You can set the color of the mask, change the size of the area by dragging the right-bottom corner, change the position of the area by dragging the area.



5.4.5 System

1) Time

Here you can set the time and date, the status for NTP and DST, the time zone for your camera.



2) Maintenance



Reboot: reboot the camera.

Factory Default: restore the camera settings to the factory default settings.

Backup Configuration: backup the current settings of the camera, it will generate a file name "config_backup.bin" for you to save.

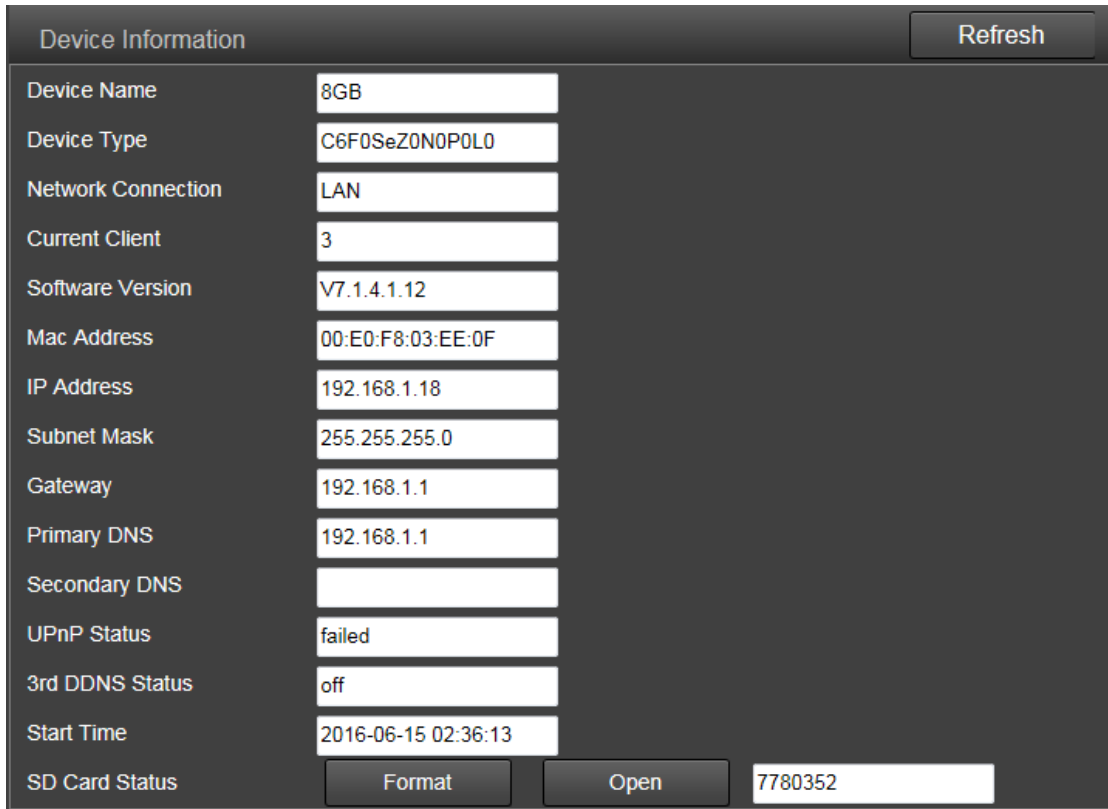
Restore Configuration: Import and restore the configuration file you backup before. Please browse and select the file you want to import, then click the "Import" button.

Upgrade: Upgrade the firmware. Please browse and select the file you want to upgrade, then click the "Upgrade" button.

3) Device Information

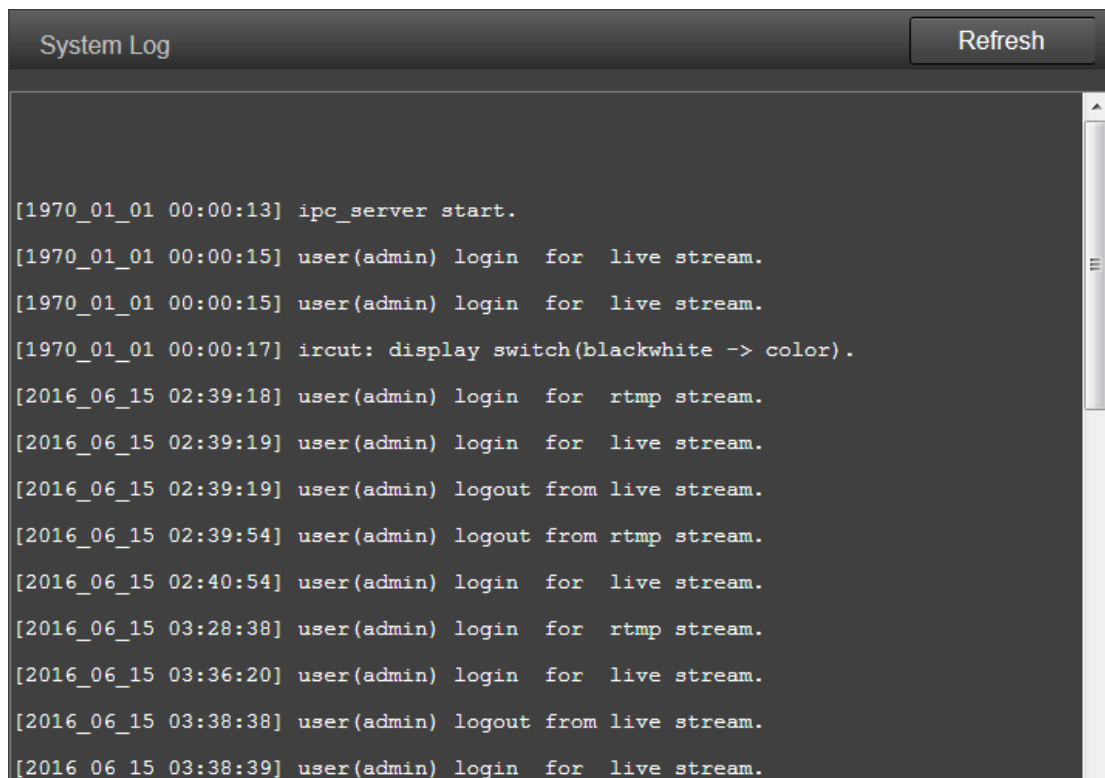
Here you can query and check the main information and status of the Dericam camera, including the name, time, IP, firmware version, DDNS and UPnP status, and the SD card left space.

By clicking the "Format" button, you can format the SD card in your camera. By clicking the "Open" button you can open and browser the contents in your SD card.



4) System Log

Here you can query the history operation or running log for your camera.



The screenshot shows a 'System Log' window with a 'Refresh' button in the top right corner. The log content is as follows:

```
[1970_01_01 00:00:13] ipc_server start.  
[1970_01_01 00:00:15] user(admin) login for live stream.  
[1970_01_01 00:00:15] user(admin) login for live stream.  
[1970_01_01 00:00:17] ircut: display switch(blackwhite -> color).  
[2016_06_15 02:39:18] user(admin) login for rtmp stream.  
[2016_06_15 02:39:19] user(admin) login for live stream.  
[2016_06_15 02:39:19] user(admin) logout from live stream.  
[2016_06_15 02:39:54] user(admin) logout from rtmp stream.  
[2016_06_15 02:40:54] user(admin) login for live stream.  
[2016_06_15 03:28:38] user(admin) login for rtmp stream.  
[2016_06_15 03:36:20] user(admin) login for live stream.  
[2016_06_15 03:38:38] user(admin) logout from live stream.  
[2016_06_15 03:38:39] user(admin) login for live stream.
```

6. Frequently Asked Questions

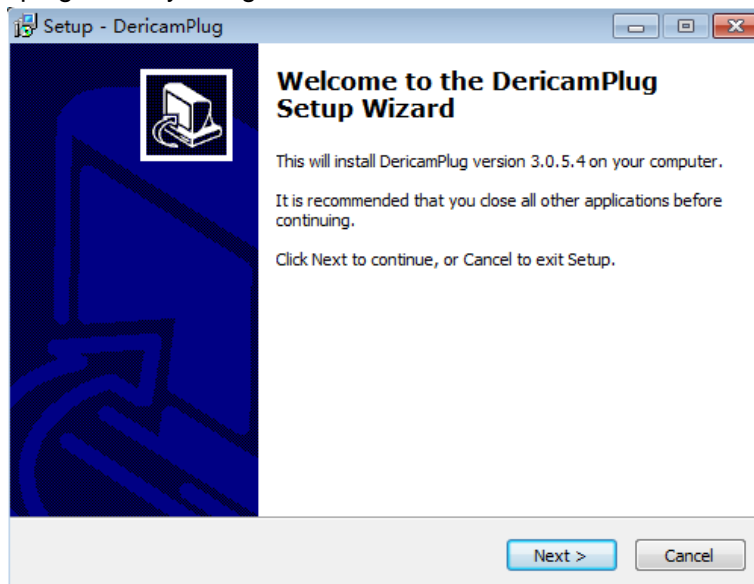
6.1 How to start the live view in computer by web browser?

Before you start the live view in windows OS by IE browser or Mozilla Firefox. Please install the plugin first. But for the Google Chrome in Windows/Mac OS and Safari in Mac, you can start the live view directly by accessing the IP address of your camera, no need to install the plugin.

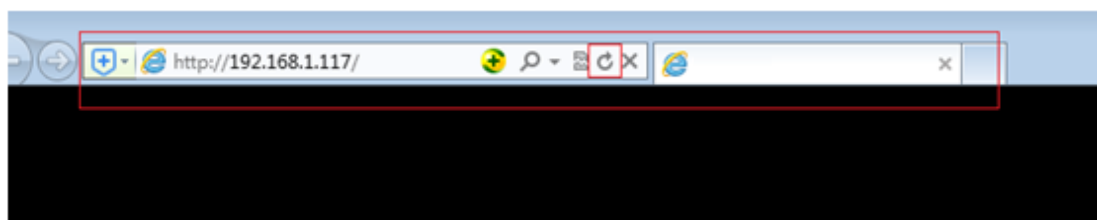
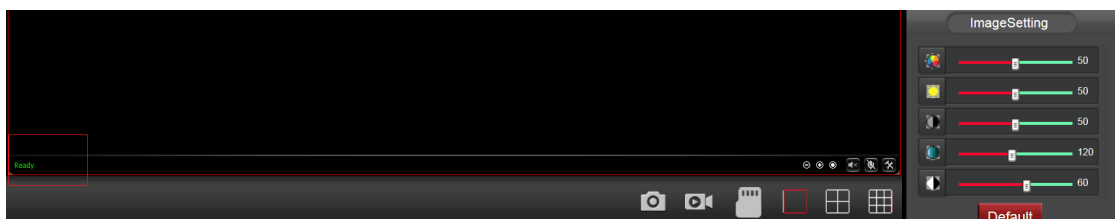
6.1.1 How to install the plugin for IE browser in Windows OS?

When you login the camera in your computer at the first time by IE browser, the IE browser will prompt automatically to show you to allow the installing of the Dericam camera plugin named **DericamPlug**.

1. Allow to install this plugin after you login the camera.
2. Install the plugin after you login the camera.



3. Refresh the IP address when it is ready to login and access your camera.



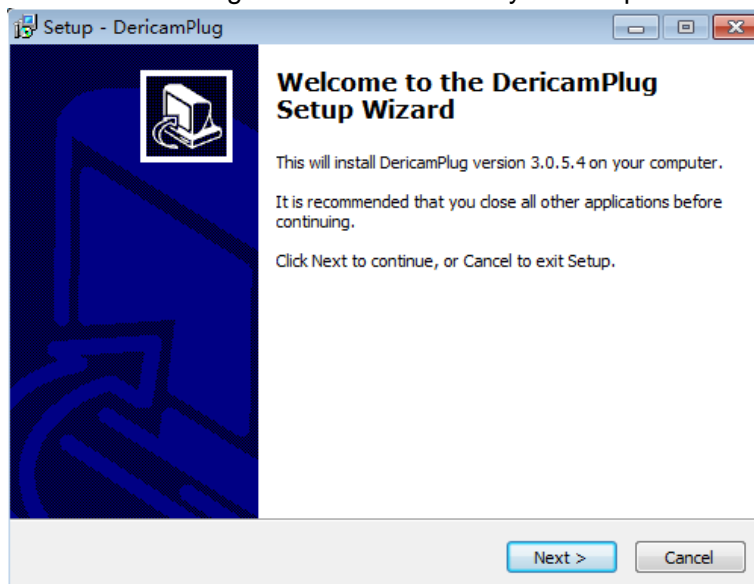
6.1.2 How to install the plugin for Mozilla Firefox browser in Windows OS?

When you login the camera in your computer at the first time by Firefox browser, it will show you to download the plugin. Please click the text link to download and save this plugin in you computer, and install it by manually.

1. Click and download the plugin from the login page, save it to your computer



2. Double click the DericamPlug.exe file to install it in your computer.

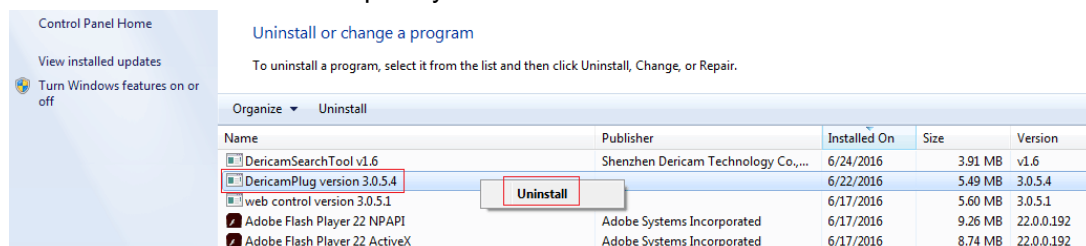


3. Refresh the IP address in your web browser to access your camera after you install the plugin successfully in your computer.

6.2 How to uninstall the plugin in your computer?

Please go to Control Panel->Uninstall a program to find the program named DericamPlug, then uninstall it directly.

Note: Please make sure you closed the web browser who is using this plugin, or it may could not be uninstalled completely.



6.3 Forgotten the username or password of the camera.

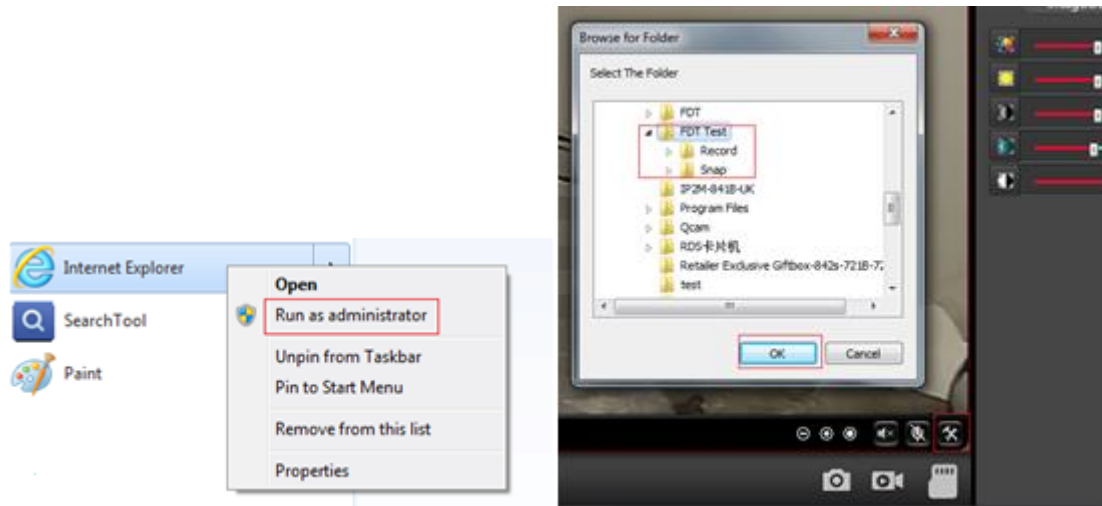
Here have a hard reset button in the camera. Please press and hold the reset button for 5-10 seconds. Upon releasing the reset button, the camera will reboot automatically and the username and password will be restored to the factory default settings.

Default username: **admin**

Default password: **admin**

6.4 Could not record videos or snap pictures in IE 11 or Firefox of Windows 10 OS.

Because the security limitation of IE 11 and windows, you could not enable the recording/snap path to store. Please run your web browser as administrator authority, and set an available file path to save your recordings and pictures. Then they will work in your computer.



6.5 Camera could not connect the wireless network by wifi.

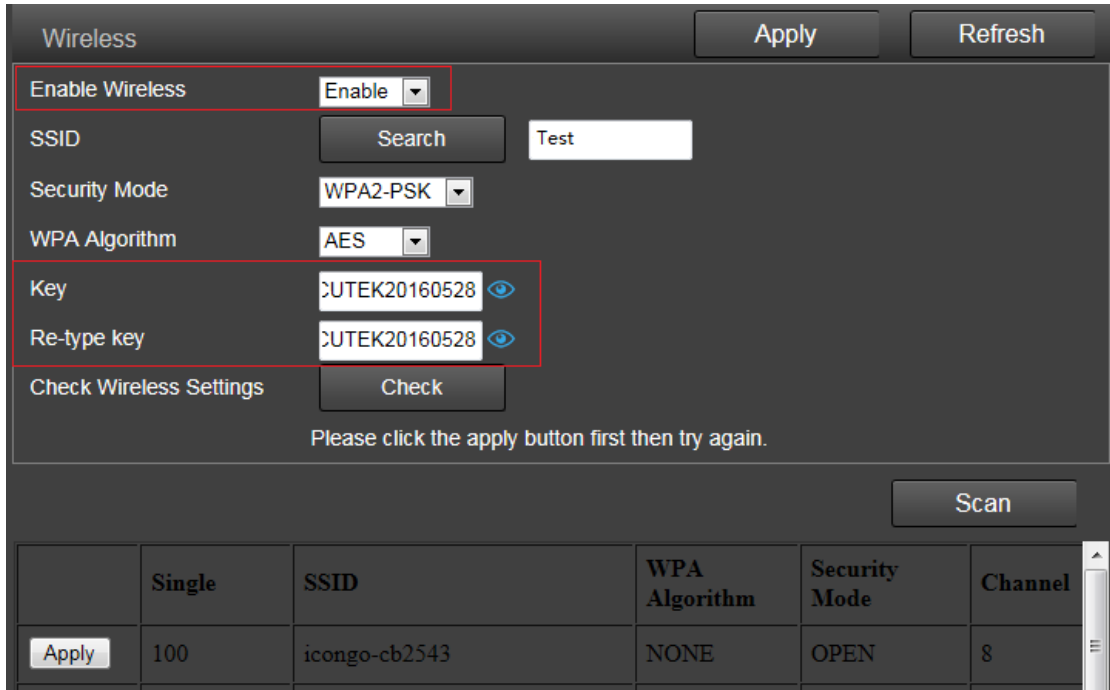
1. Please go to the CONFIG->Network->Wireless page through web browser, here is a check button, you can check whether your wifi settings are right or not by this button. If your settings are correct, it will show you success.

2. Please make sure these special characters did not be included in your wifi password, such as & = ' " \ % +.

3. The camera only support 2.4G wifi, did not support 5G. Please make sure you did not set the 5G wifi configuration to the camera.

4. Please make sure you have enabled the wireless.

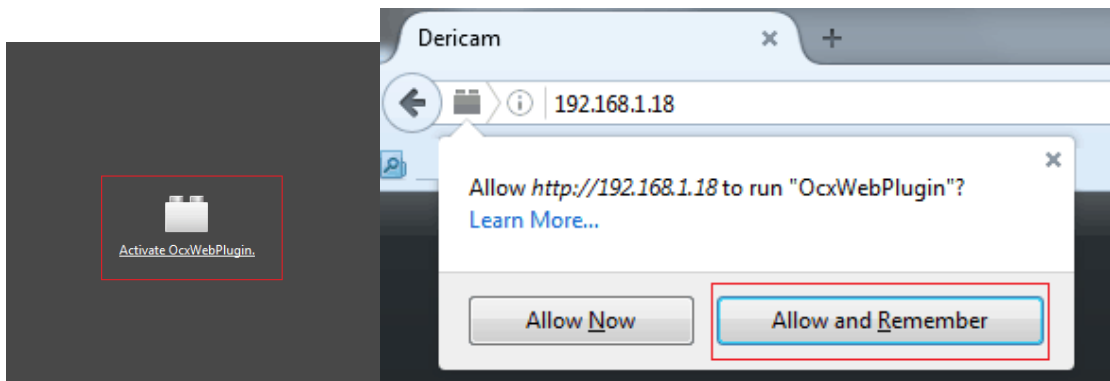
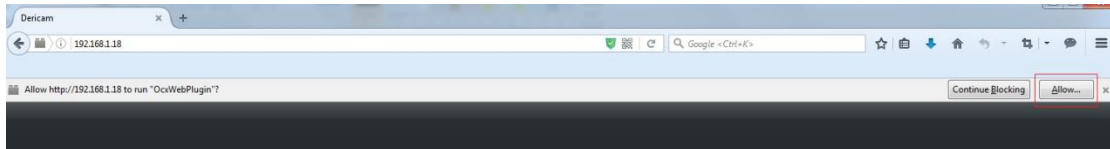
5. Please make sure your wifi password is correct, you can display the password by click the eye-icon beside the input box.



6.6 The plugin is blocked by Firefox.

Firefox will block the NPAPI plugin by default, it will prompt you to allow this plugin when you access the camera or you can active the plugin after you login the camera.

Please **refresh** the IP address of your camera to access your camera again once you allow or active the plugin in your Firefox browser.



Warning:

This device complies with Part 15 of the FCC Rules. Operation is subject to the following two conditions: (1) this device may not cause harmful interference, and (2) this device must accept any interference received, including interference that may cause undesired operation.

changes or modifications not expressly approved by the party responsible for compliance could void the user's authority to operate the equipment.

NOTE: This equipment has been tested and found to comply with the limits for a Class B digital device, pursuant to Part 15 of the FCC Rules. These limits are designed to provide reasonable protection against harmful interference in a residential installation. This equipment generates, uses and can radiate radio frequency energy and, if not installed and used in accordance with the instructions, may cause harmful interference to radio communications. However, there is no guarantee that interference will not occur in a particular installation. If this equipment does cause harmful interference to radio or television reception, which can be determined by turning the equipment off and on, the user is encouraged to try to correct the interference by one or more of the following measures:

- Reorient or relocate the receiving antenna.
- Increase the separation between the equipment and receiver.
- Connect the equipment into an outlet on a circuit different from that to which the receiver is connected.
- Consult the dealer or an experienced radio/TV technician for help.

NOTE: This device and its antenna(s) must not be co-located or operation in conjunction with any other antenna or transmitter

RF Exposure Statement

To maintain compliance with FCC's RF Exposure guidelines, This equipment should be installed and operated with minimum distance of 20cm the radiator your body. This device and its antenna(s) must not be co-located or operation in conjunction with any other antenna or transmitter