

Kurzanleitung RF-TOUCHLINE / Quick guide RF-TOUCHLINE

Pairing RF-TOUCHLINE

D

Zur kabellosen Bedienung Ihres motorisierten Komfortbettes

Kabellos, ergonomisch, zuverlässig, einfache Bedienung, elegantes Design.

Aktivieren Sie den Pairing-Modus.

Pairing Methode

1. Verbinden Sie alle Komponenten mit dem Antriebssystem.
2. Stecken Sie den Stecker in die Steckdose.
3. Drücken Sie **2x** die Pairing-Taste **(a)** bis die LED leuchtet. Der Pairing-Prozess ist aktiv.
4. Drücken Sie gleichzeitig die Tasten **(1)** und **(3)** am Handsender, bis die LED erlischt und die LED im Handsender dauerhaft leuchtet. Der Lernprozess ist abgeschlossen.
5. Mit den Tasten **(4)** und **(6)** können Sie nach der gleichen Methode ein zweites Antriebssystem zur Parallelfahrt von zwei Applikationen pairen.

- ▶ **Hinweis:** Für den Pairing-Prozess sollte der Abstand zwischen Sender und Empfänger weniger als zwei Meter betragen.

Pairing RF-TOUCHLINE

GB

For wireless operation of your motorized comfort bed system

Wireless, ergonomic, reliable, easy handling, elegant design.

Activate the pairing mode.

Pairing method

1. Connect all components to the drive system.
2. Insert the plug into the socket.
3. Press the pairing button **(a)** **2x** until the LED lights up. The pairing process is active.
4. Press button **(1)** and **(3)** of the handset simultaneously until the LED switches off and the LED on the handset glows constantly. The learning process is completed.
5. With buttons **(4)** and **(6)** you can pair a second drive system for parallel operation of two applications using the same method.

- ▶ **Note:** The distance between transmitter and receiver should be less than two meters for pairing.

RF-TOUCHLINE



Taste / Button	Funktion	Function
1 - 21	Kundenspezifisch	Customer specific
1 + 3	Pairing (System 1)	Pairing (System 1)
4 + 6	Pairing (System 2)	Pairing (System 2)

FCC Warning / IC Warning

FCC: This device complies with Part 15 of the FCC Rules. Operation is subject to the following two conditions: (1) this device may not cause harmful interference, and (2) this device must accept any interference received, including interference that may cause undesired operation.

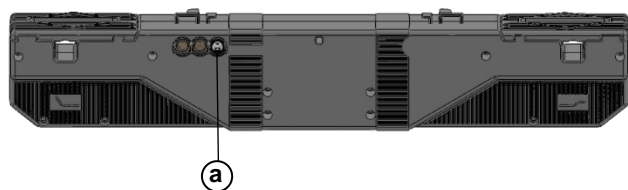
Note: Any changes or modifications not approved by the party responsible for compliance could void the user's authority to operate the equipment.

IC: This device complies with Industry Canada RSS-210 standard(s). Operation is subject to the following two conditions: (1) this device may not cause interference, and (2) this device must accept any interference, including interference that may cause undesired operation of the device."

Le présent appareil est conforme aux CNR d'Industrie Canada applicables aux appareils radio Exempts de licence. L'exploitation est autorisée aux deux conditions suivantes: (1) l'appareil ne doit pas produire de brouillage, et (2) l'utilisateur de l'appareil doit accepter tout brouillage radioélectrique subi, même si le brouillage est susceptible d'en compromettre le fonctionnement."

Position der Pairing Taste / Position of the Pairing button

OKIMAT 2



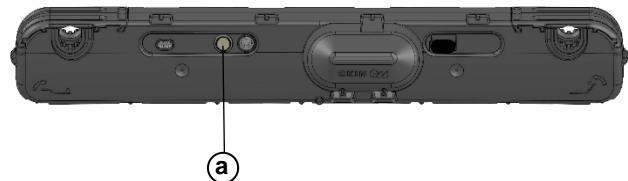
HE150



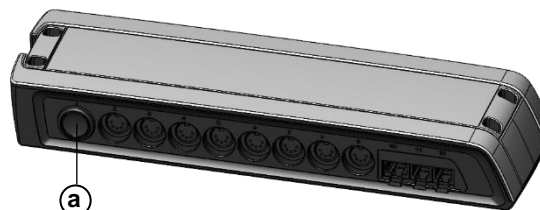
Remote Control ECO / RF ECO BT



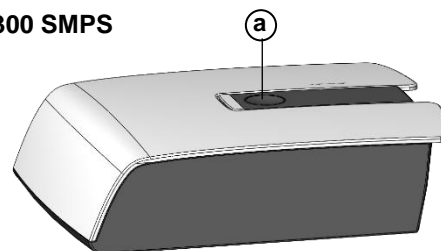
OKIMAT 4



HE-300



HE-300 SMPS



FCC Caution.

This device complies with part 15 of the FCC Rules. Operation is subject to the following two conditions:

- (1) This device may not cause harmful interference, and
- (2) this device must accept any interference received, including interference that may cause undesired operation.

Any Changes or modifications not expressly approved by the party responsible for compliance could void the user's authority to operate the equipment.

Note: This equipment has been tested and found to comply with the limits for a Class B digital device, pursuant to part 15 of the FCC Rules. These limits are designed to provide reasonable protection against harmful interference in a residential installation. This equipment generates uses and can radiate radio frequency energy and, if not installed and used in accordance with the instructions, may cause harmful interference to radio communications. However, there is no guarantee that interference will not occur in a particular installation. If this equipment does cause harmful interference to radio or television reception, which can be determined by turning the equipment off and on, the user is encouraged to try to correct the interference by one or more of the following measures:

- Reorient or relocate the receiving antenna.
- Increase the separation between the equipment and receiver.
- Connect the equipment into an outlet on a circuit different from that to which the receiver is connected.
- Consult the dealer or an experienced radio/TV technician for help.

IC Warning

This device complies with Industry Canada licence-exempt RSS standard(s). Operation is subject to the following two conditions:

- (1) This device may not cause interference, and
- (2) This device must accept any interference, including interference that may cause undesired operation of the device.

Le présent appareil est conforme aux CNR d'Industrie Canada applicables aux appareils radio exempts de licence. L'exploitation est autorisée aux deux conditions suivantes:

- (1) l'appareil ne doit pas produire de brouillage, et
- (2) l'utilisateur de l'appareil doit accepter tout brouillage radioélectrique subi, même si le brouillage est susceptible d'en compromettre le fonctionnement