

OFFICE-WEB KEYBOARD MOUSE SET

USER'S MANUAL (Model #: KS-2090)

Important Ergonomic Information

Some experts believe that using any mouse or trackball may cause serious injury to hands, wrists, arms, neck, or back. If you feel pain, numbness, or weakness in these areas, see a qualified health professional.

TO REDUCE THE RISK OF INJURY, FOLLOW THESE PRECAUTIONS:

- Take frequent breaks, get up and walk around several times every hour.
- Vary your tasks throughout the day.
- Keep your shoulders relaxed with your elbows at your side. Position your keyboard and mouse so you do not have to reach.
- Adjust your chair and keyboard so your upper arms and wrists are straight.
- Avoid resting your wrists on sharp edges.

SYSTEM REQUIREMENT

- Mouse compatible with standard Microsoft mode.
- 3rd button and wheel function require Win98/2000/ME/XP.
- 4th & 5th button require Win2000/XP to function, or will require to install additional driver as attached with this product.
- 6th & 7th button require installing additional driver as attached with this product.
- If your computer's operating system uses Windows98/98SE, please prepare the Windows98 or 98SE compact disk for system's request during the installation of mouse.
- Keyboard compatible with standard Microsoft mode.
- These multimedia/office/Net hot-keys will require to install additional driver as attached with this product.
- The Office hot-keys require MS-Office software to function.
- The Multimedia Hot-keys require Windows 2000/XP/ME to function.

Getting Started

Congratulations on your purchase of an **800dpi** Office-Web mouse. The 800dpi high resolution will bring users the best operation accuracy and efficiency, especially for a display at 1024*768 or higher. It has a double operation speed and only requires 1/4 space by comparing with a 400dpi mouse. With the ergonomic design in extra buttons, the short-cut functions about MS-Office and Internet provide you an efficient operation to access defaulted path or hot-functions chosen by yourself.

Package Contains

Your Radius Mouse package includes the following:

1. Wireless Mouse
2. Wireless keyboard
3. Receiver with cable
4. CD-ROM
5. User's manual
6. 2 AA batteries for mouse
7. 2 AA batteries for keyboard

Note : If any part is missing, please contact your dealer for a replacement immediately.

Precaution

! For optimal performance, place the receiver at least 8 inches or 20 centimeters away from other electrical devices, such as the computer, the computer monitor, speakers or other external storage drives.

Battery Warning!

When replace the batteries, use alkaline. You may use rechargeable NiMH or other type of batteries, but do not mix them with alkaline. Do not mix used and new batteries together!

BEFORE YOU BEGIN

- Keep this installation guide for future reference! It contains Important Troubleshooting Information.
- Keep your old PS/2 mouse as a back-up device.

HARDWARE INSTALLATION

Connecting Receiver

1. Turn off your computer
2. Disconnect the current keyboard and mouse.
3. The receiver comes with a two-headed cable. You just need to plug the USB connector into USB port because the USB connector is for the keyboard and the mouse simultaneously.

The USB Connector



Inserting the Batteries

The RF wireless keyboard uses 2 AA batteries. They are inserted as follows:

1. Turn the keyboard over to show the underside.
2. Release the battery cover.
3. There are signs to indicate positive and negative orientation for the batteries. Take care to insert the batteries correctly.
4. Clip the battery cover back into place and make sure it is firmly closed.

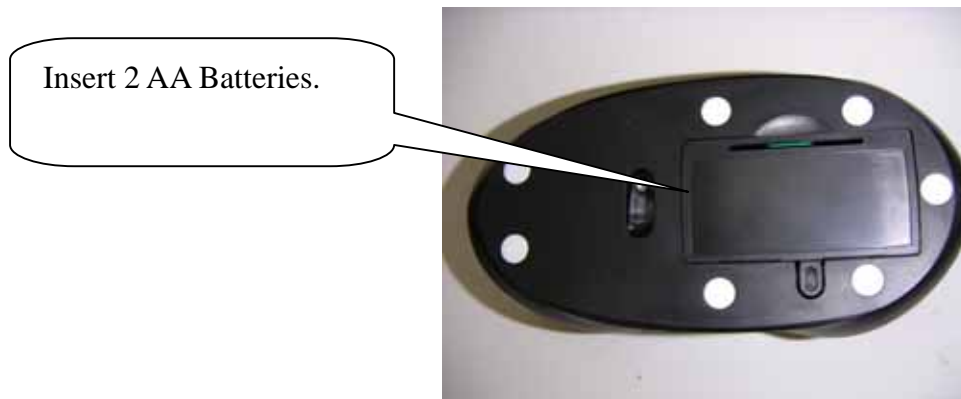
Insert 2 AA Batteries.



The RF wireless mouse uses 2 AA batteries.

They are inserted as follows:

1. Turn the mouse to the bottom side.
2. Remove the batteries cover by moving the opening tabs and pull the battery cover out.
3. There are signs to indicate batteries' positive and negative poles. Follow the signs to place the batteries
4. Place the batteries cover back and make sure it is firmly closed



Selecting the ID Channel

The RF wireless keyboard & mouse provide the possibility of 256 different ID to avoid interference with other users of the same model RF wireless keyboards or mice. Before using the wireless keyboard and mouse, you must ensure that the same ID is set for the receiver, keyboard and mouse.

Please follow the steps as below to set up:

1. Turn to the bottom of receiver and you will see a small button (ID code connection, refer to picture).
2. Establish communication between the receiver and the mouse (Select identification codes).
 - Press and release the connect ID button on the bottom of receiver.

1. Click the connect ID button on the Receiver side.



- Within 6 seconds of the previous step, press and release the “connect” button on bottom of the wireless mouse, and the “connect” small button on the top-right of the keyboard.

2. Click the connect ID button on the Mouse side.



3. Click the connect ID button on the keyboard side.



- After above “connect” procedure, the same ID is selected on both of the receiver and the mouse.
- Please move the mouse to operate its cursor and test some keyboard’s function. If there is problem, please do the connect setting procedure again or check the trouble shooting guide.

Operation Guide

Battery Low Indication

When the voltage level of the battery goes down under the preset level, the scrolling wheel will flash at least three times on moving or clicking the mouse. Although the mouse can still work for a while, the user, at this time, should have a new set of batteries ready for replacement. Or, if the user has a companion charger base, and

Two re-chargeable batteries are inside the mouse, charge the mouse as soon as possible.

Power off the mouse

1. Be sure the mouse is **NOT** in sleep mode. If it is, press any key to wake it up.
2. Press and hold the Connect button on the bottom of the mouse for more than 2 seconds. (The red light will go off while the Connect button is depressed.)
3. Wait until the red light flash once. Release the Connect button.
4. Now, the mouse is in power off mode. No operation can be done.

Power on the mouse

To activate the mouse again, press the Connect button on the bottom of the mouse once. (**DO NOT** depress the Connect button for more than 1.5 seconds when resuming the mouse from power off mode.) The red light will turn on, and the mouse is ready for normal operation.

Note: Be sure to press the connect button firmly in procedure, if the connect button is not depressed steadily the red light will be on before 2 seconds expire. This will result in a change of channel and ID. Don't panic, just re-connect the mouse to the receiver, and follow step 4 again.

Operations on power saving mode

In order to conserve battery power, the mouse is designed to reduce power consumption gradually from standby mode to sleep mode, if it is not being used.

Standby mode – Around 2 seconds after the mouse stops moving, it enter into standby mode.

Sleep mode – If the mouse is left intact for around 8 minutes, it goes to sleep

mode and shuts down the optical sensor to maintain minimum power consumption. No moving operation is possible in this mode.

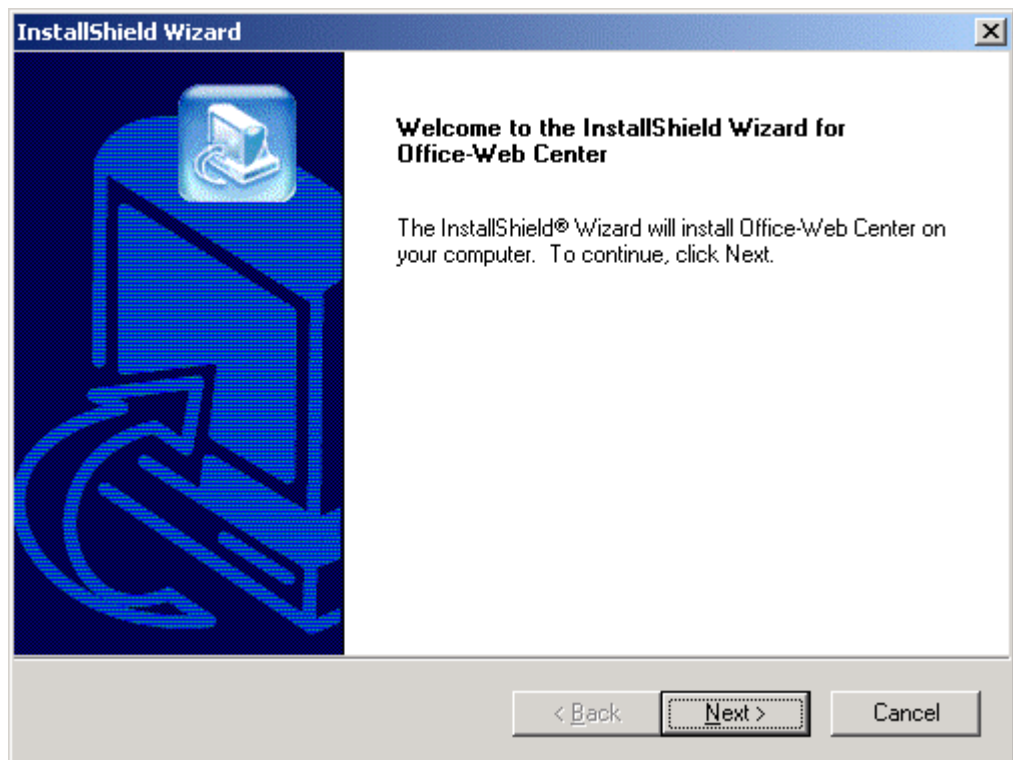
Wake up the mouse

This mouse can work promptly under Standby mode so users might not be able to tell the existence of this mode. But, in sleep mode, users have to press any button to wake up the mouse for normal operation.

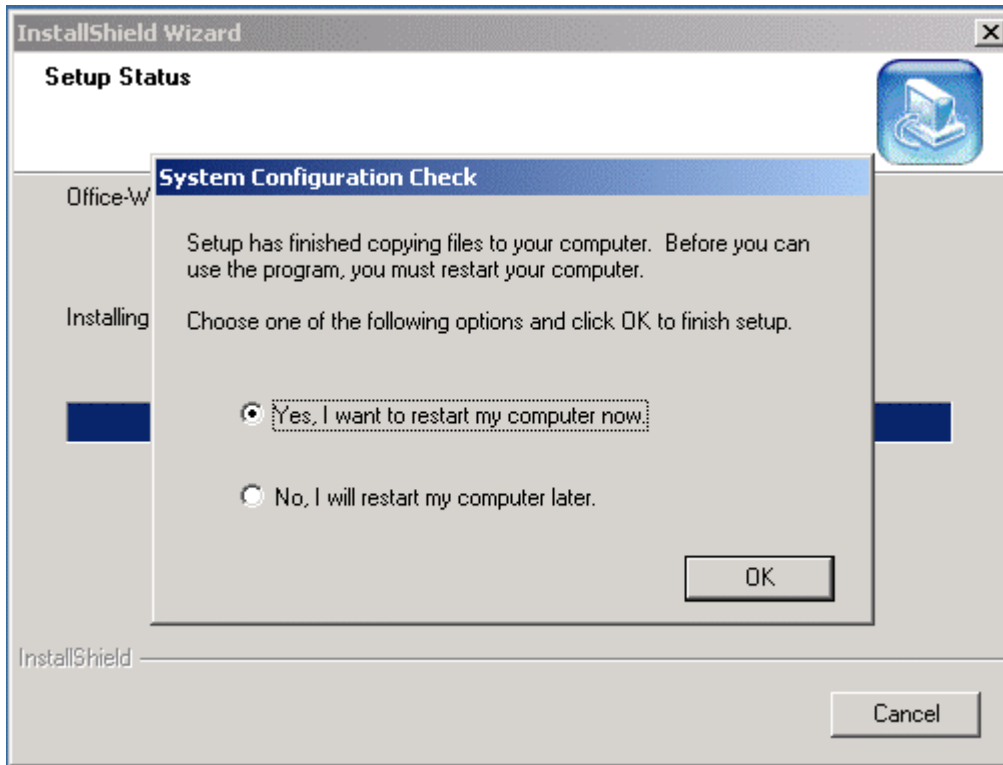
Installing the Software

To install the software, please follow the steps below to finish:

1. Insert the Auto-Run CD-ROM onto CD-ROM driver, the installation menu will be executed automatically. (If the auto-run does not function itself, double-click the “**setup**” icon in the CD files.)
2. The setup program will guide you to finish the installation step by step



- After you finish the installation, select "Restart" to reboot your system and activate multimedia hot keys and wheel scrolling functions.



RF Office-Web Keyboard

Hot-Key Functions

Note: Please make sure that both hardware and software are correctly installed in your system before proceeding to use the Multimedia/Office/Web Keys.

The Multimedia Keys on the keyboard are labeled as follows:



1	Vol + Vol -	Increase volume. Decrease the volume.
2	Play/Pause	Press this button once to play CD/VCD, press again to pause playing

3	Stop	Press this button once to stop the CD./VCD playing.
4	Mute	Press this button once to mute the volume, press again to un-mute.
5	Previous Track	Press this button to launch the previous CD track.
6	Next Track	Press this button to launch the next CD track.

The Office Keys on the keyboard are labeled as follows:



1	Word	Press this button to launch the MS-Word application.
2	Excel	Press this button to launch the MS-Excel application.
3	PowerPoint	Press this button to launch the MS-PowerPoint application.
4	Calendar	Press this button to launch the Calendar in MS-Outlook application
5	Smart Lock	Press this button to enable the office-special function on the F1 to F12 function key.
6	F1	To call the Help function
7	F2	To create one new Document
8	F3	To open one old document.
9	F4	To save current document
10	F5	To replace one string in the current document
11	F6	To print current document
12	F7	To call the spell-check tool.
13	F8	Un-do the recently action in current document
14	F9	Re-do the recently action in the current document.
15	F10	To create one hyper-link in the current document
16	F11	To insert object into the current document
17	F12	To save the current document as a new document.

The Web Keys on the keyboard are labeled as follows:



1	WWW	Press this button to launch the default Internet browser application.
2	E-mail	Press this button to launch the default E-mail application.
3	Favorites	Press this button to bring up “ My Favorites Window”, Press again to close “My Favorites Window”.
4	Search	Press this button to bring up “Search window” for web address, Press again to close “Search window”.
5	My Computer	Press this button to launch the default File-Manager browser.
6	Calculator	Press this button to launch the default calculator application.
7	Log off	Press this button to log out the windows system. (Only work on Windows XP)

The Miscellaneous Keys on the keyboard are labeled as follows:



1	Wheel	To scroll this wheel to bring the document up and down.
2	Left-Arrow	Press this button to launch the default Multimedia-Player application.
3	Go	Press this button to launch the IE application.

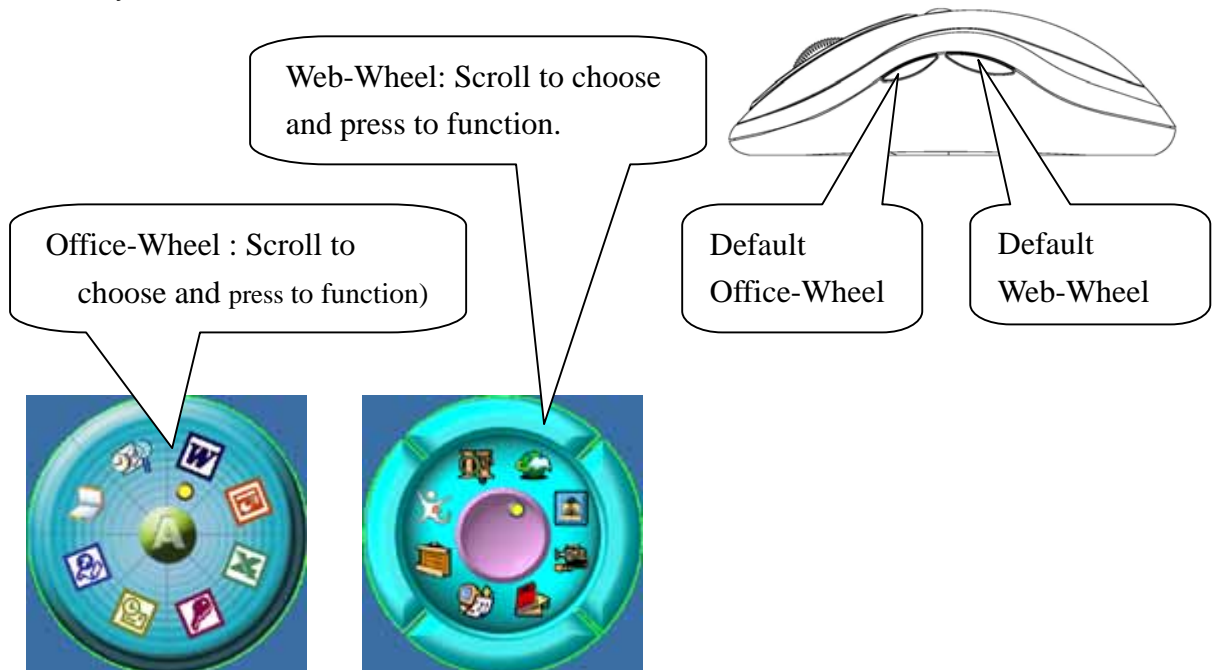
MAKING THE KEYBOARD KEYS FOR OTHER ASSIGNMENTS

- Start Office-Web driver from the Control Panel or double click the mouse icon on the Windows Taskbar.
- The Keyboard Properties display, go to the hot-key assignments area and choose from the available options to set up your keyboard.
- Click the down arrow to view the list of functions. Use the scroll bar to see other functions not displayed. Choose a function by clicking it. The function you have selected is displayed and highlighted.

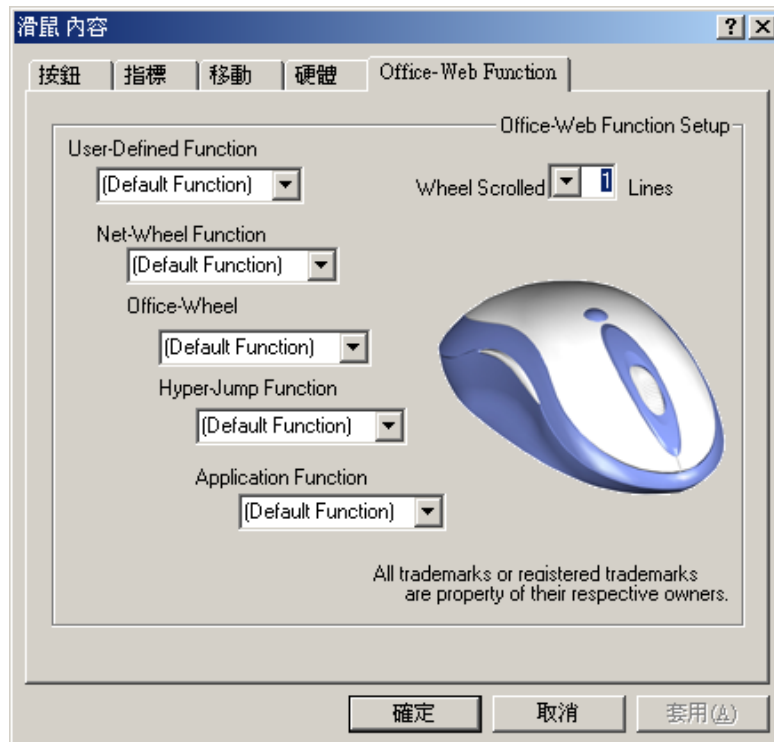
RF Office-Web Keyboard

Hot-Key Functions

- When you install the included software driver the mouse hot keys will be enable with driver default.
- The Office-Wheel Function is attached on the mouse software as following. Users can change the default function of wheel and extra hot-keys.



- Default setting for these hot keys is programmable as following as shown on the application by running the “Office-Web Wheel Center” as following:



MAKING THE MOUSE BUTTONS FOR OTHER ASSIGNMENTS

- Start Office-Web driver from the Control Panel or double click the mouse icon on the Windows Taskbar.
- The Mouse Properties display, go to the button assignments area and choose from the available options to set up your mouse.
- Click the down arrow to view the list of functions. Use the scroll bar to see other functions not displayed. Choose a function by clicking it. The function you have selected is displayed and highlighted.
- The wheel functions both as a wheel and as a third button. As a wheel, simply roll the wheel. To use the wheel like a standard mouse button, click the wheel and select a function for this button.

Uninstalling the Software

How to uninstall the Mouse Driver and Application Software

The Mouse driver can be removed from Windows (except Windows 3.1x) by clicking the Add/Remove Programs icon in the Control Panel. Select "Remove" button.

GENERAL SPECIFICATIONS

- 800dpi hardware resolution
- Multimedia/Office/Web function keys design.
- Digital Radio Frequency wireless mouse, keyboard with receiver
- 2 channels and 256 ID selections for your mouse options to prevent interruption
- 1 channel and 256 ID selections for your keyboard options to prevent interruption
- 7 buttons design with scrolling wheel
- Ergonomic design for comfortable grip

Electromagnetic Characteristics (EMC)

This unit complies with Part 15 of FCC Rules.

Operation is subject to following two conditions:

(1) This device may not cause harmful interference.

(2) This device must accept any interference received, including interference that may cause undesired operation.



Tested To Comply

With FCC Standards

- **CE - Type acceptance:** ETS 300 220 short range devices

Transmitter (Mouse)

- Distance: 3 feet typical
- Power: 2.4V DC (Two AA size of alkaline batteries)
- Carrier Frequency: 27 MHz
- Dimensions: 98*56*37 mm
- Weight: 86 grams

Transmitter (Keyboard)

- Distance: 3 feet typical
- Power: 2.4V DC (Two AA size of alkaline batteries)
- Carrier Frequency: 27 MHz
- Dimensions: 470*230*27 mm
- Weight: 735 grams

Receiver

- Interface: USB

- Power: 5V DC, 100mA MAX connected to host computer
- Dimensions: 75*75*19 mm (without counting the extended USB connector)
- Weight: 97 grams

ELECTRIC SPECIFICATIONS

- Operating Voltage Transmitter: 2.4 V DC (powered by batteries)
Receiver: 5V DC (powered by USB port)
- Operating Current Transmitter(mouse) : 45mA, operate on a white
Paper
Transmitter(keyboard): 1.5mA
Receiver: 16mA typical
- Standby Current 6mA
- Sleep Current 240uA
- Modulation Type FSK

TROUBLESHOOTING

1. Mouse does not function

- If mouse is not functional, please turn off the computer first.
- Check the receiver and make sure it is firmly attached to the USB port of the computer.
- Check the placement of batteries and see if they are properly connecting.
- The "+" and "-" on the batteries must match the "+" and "-" on the slots. If the batteries aren't inserted correctly, the device won't work.
- Restart the computer again. If the LED inside the receiver does not light up when moving the mouse, please re-connect the mouse to the receiver.
- **Q:** The mouse cursor can only move left & right during operation (it could be caused by low battery or the optical sensor's data error).
A: Please take out one of batteries and put it back for a power reset and then redo the connect procedure.
- **Q:** The mouse does not work after waking up from power off mode by pressing the connect button once.
A: This might be caused by imprecisely depressing the connect

button to wake up the mouse. Users can gain back normal operation by pressing connect button on the mouse first, and then pressing the one on the receiver. As soon as the LED inside the receiver starts flashing, the mouse is ready to operate.

Optical Sensor Mouse functions best on surfaces with details for tracking. It may not function on reflective, reflective pattern or non-visible detail surfaces!

2. Reducing Interference with Other Wireless Devices

- **Reducing Interference with Other Wireless Devices:**
All 27MHz radio-based devices are subject to interference from other 27MHz radio-based devices, such as cordless telephones, cordless baby monitors, and cordless toys. It may help to move the receiver unit and the base unit of other wireless devices (such as cordless telephone cradle) as far apart as possible. You may need to try several times for a location that is best in your operating environment.
- Move the receiver and the mouse closer to each other so that the receiver is relatively shorter in distance to the mouse than to other 27MHz transmitters. You may need to re-establish the “connection”.

Note: Avoid using this device on a metal surface because a large surface of iron, aluminum, copper, or other metal may act like a shielding to the RF antenna of the mouse and the receiver.

3. Interference with other RF wireless mouse

If the interference comes from other same model of RF wireless mice, please “Setting up connection between mouse and receiver” of the installation guide to switch to a new RF channel. A new identification code is also generated upon the completion of channel switching.

Normally, the effective transmission distance is about 3 feet, depending on the environment. If the effective distance between the mouse and the receiver is bad, try to change the location of the receiver.

4. If you have difficulty connecting the wireless mouse:

Increase the distance between the set of wireless mouse and other radio device units.

Turn off the other wireless devices, or their base units that are in close proximity to the receiver of this wireless mouse.

Try connecting the wireless mouse and its receiver again.

To verify that your device is connected and working properly, open a document and try the device.

5. My keyboard or mouse does not work or does not work properly after installation

Make sure you have connected the receiver correctly. For optimal performance, place the receiver at least 8 inches or 20 centimeters away from other electrical devices, such as the computer, the computer monitor, or external storages devices.

Make sure you have installed the batteries correctly.

Make sure you have set the same ID on both transmitter (mouse and keyboard) and the receiver (see Setting the ID under Hardware Installation).

If the problem persists, try an alternative ID selection to avoid possible interference. Remember to set the same ID on both transmitter and receiver.

6. My keyboard or mouse is not detected

Make sure you have connected the receiver correctly. Do not plug or unplug the receiver cables while the computer is running.

You may have other system devices that conflict with the mouse and keyboard.

Check the IRQ / address settings of these devices for conflicts and change the settings as required.

Federal Communication Commission Interference Statement

This equipment has been tested and found to comply with the limits for a Class B digital device, pursuant to Part 15 of the FCC Rules. These limits are designed to provide reasonable protection against harmful interference in a residential installation. This equipment generates, uses and can radiate radio frequency energy and, if not installed and used in accordance with the instructions, may cause harmful interference to radio communications. However, there is no guarantee that interference will not occur in a particular installation. If this equipment does cause harmful interference to radio or television reception, which can be determined by turning the equipment off

and on, the user is encouraged to try to correct the interference by one of the following measures:

- Reorient or relocate the receiving antenna.
- Increase the separation between the equipment and receiver.
- Connect the equipment into an outlet on a circuit different from that to which the receiver is connected.
- Consult the dealer or an experienced radio/TV technician for help.

FCC Caution: Any changes or modifications not expressly approved by the party responsible for compliance could void the user's authority to operate this equipment.

This device complies with Part 15 of the FCC Rules. Operation is subject to the following two conditions: (1) This device may not cause harmful interference, and (2) this device must accept any interference received, including interference that may cause undesired operation.