

# **Cordless Multimedia-Internet Keyboard Mouse Set**

## **USER'S MANUAL (Model #: KS-2251)**

The set contains: a wireless multimedia-internet keyboard, KB-22, a mini RF optical mouse, MWP2051-L, and a mini size receiver, RX2051.

### **Important Ergonomic Information**

Some experts believe that using any mouse or trackball may cause serious injury to hands, wrists, arms, neck, or back. If you feel pain, numbness, or weakness in these areas, see a qualified health professional.

#### **TO REDUCE THE RISK OF INJURY, FOLLOW THESE PRECAUTIONS:**

- Take frequent breaks, get up and walk around several times every hour.
- Vary your tasks throughout the day.
- Keep your shoulders relaxed with your elbows at your side. Position your keyboard and mouse so you do not have to reach.
- Adjust your chair and keyboard so your upper arms and wrists are straight
- Avoid resting your wrists on sharp edges

#### **SYSTEM REQUIREMENT**

- The mouse is compatible with standard Microsoft mode.
- 3<sup>rd</sup> button and wheel function require Win98/2000/ME/NT/XP.
- If your operating system (OS) is Windows98/98SE, please prepare the Windows98 or 98SE compact disk for system's request during the installation of mouse.
- Keyboard is compatible with standard Microsoft mode.
- These Multimedia-Internet hot-keys will require additional driver as attached with this product.
- The Multimedia/ Internet Hot-keys require Windows 2000/XP/ME to function.

## Getting Started

Congratulations on your purchase the KS-2251 set, wireless multimedia-internet keyboard and optical mouse set. The slim type keyboard is an all new design keyboard, the most interesting part is the key top, slim and thin, different from any one in the market. The mini wireless mouse is also such an incredible product, using and knowing. The product will bring you a special experience in using computer and surfing web.

### Package Contains

Your Keyboard/Mouse Set package includes the following:

1. Wireless mouse (MWP2051-L)
2. Wireless keyboard (KB-22)
3. Receiver with cable (RX2051)
4. CD-ROM
5. User's manual
6. 2 AA batteries for mouse
7. 2 AAA batteries for keyboard

Note : If any part is missing, please contact your dealer for a replacement immediately.

### *Precaution*

For optimal performance, place the receiver at least 8 inches or 20 centimeters away from other electrical devices, such as the computer, the computer monitor, speakers or other external storage drives.

### *Battery Warning!*

When replace the batteries, use alkaline. You may use rechargeable NiMH or other type of batteries, but do not mix them with alkaline. Do not mix used and new batteries together!

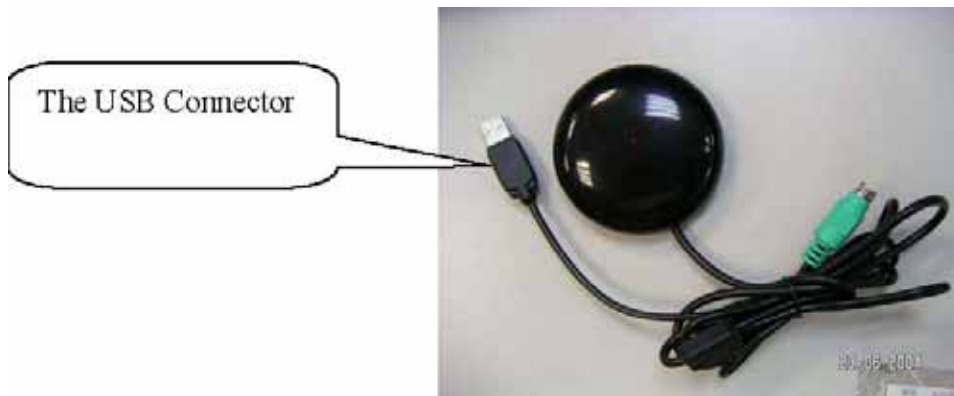
### BEFORE YOU BEGIN

- Keep this installation guide for future reference! It contains Important Troubleshooting Information.
- Keep your old mouse as a back-up device.

## HARDWARE INSTALLATION

### Connecting Receiver

1. Turn off your computer
2. Disconnect the current keyboard and mouse.
3. The receiver comes with a two-headed cable. You just need to plug the USB connector into USB port because the USB connector is for the keyboard and the mouse simultaneously.
4. Turn on your computer



### Inserting the Batteries

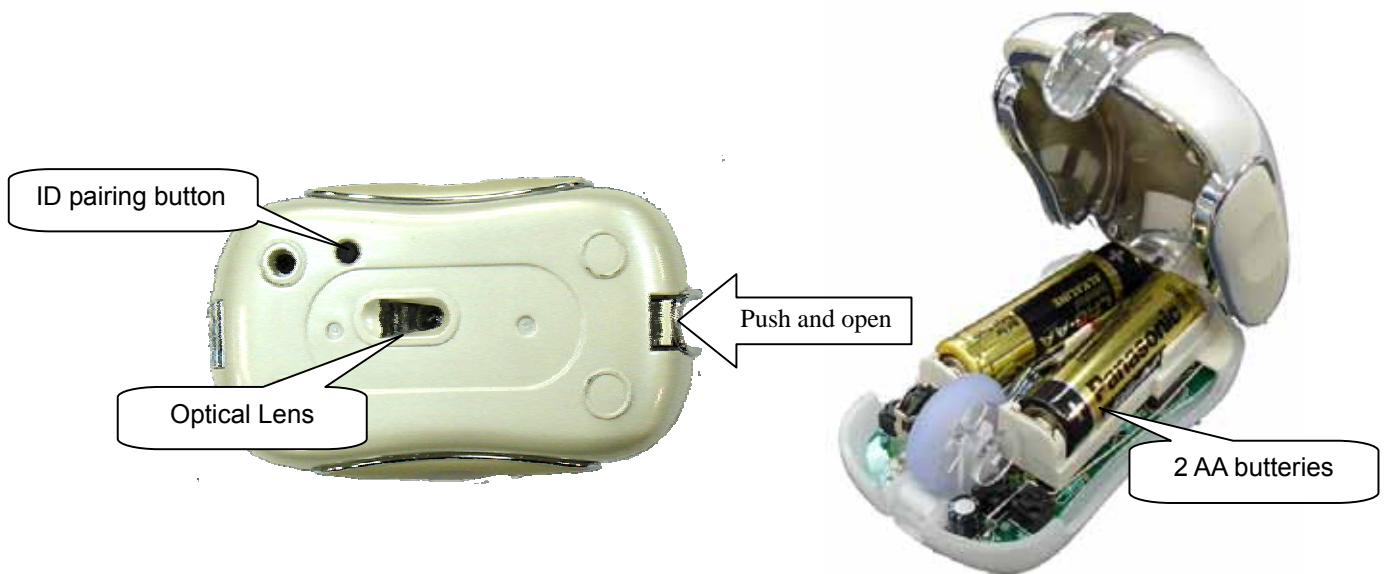
**The RF cordless keyboard uses 2 AAA batteries. They are inserted as follows:**

1. Turn the keyboard over to show the underside.
2. Release the battery cover.
3. There are signs to indicate positive and negative orientation for the batteries. Take care to insert the batteries correctly.
4. Clip the battery cover back into place and make sure it is firmly closed.



**The RF wireless mouse uses 2 AA batteries. They are inserted as follows:**

1. Turn the mouse to the bottom side.
2. Remove the batteries cover (Upper case) by moving the opening tabs.
3. There are signs to indicate batteries' positive and negative poles. Follow the signs to place the batteries
4. Place the batteries cover back and make sure it is firmly closed



### **Selecting the ID Channel**

The RF wireless keyboard & mouse provide the possibility of 256 different ID to avoid interference with other users of the same model RF wireless keyboards or mice. Before using the wireless keyboard and mouse, you must ensure that the same ID is set for the receiver, keyboard and mouse.

**Please follow the steps as below to set up:**

1. Turn to the bottom of receiver and you will see a small button (ID code connection, refer to picture).
2. Establish communication between the receiver and the mouse (Select identification codes).
  - Press and release the connect ID button on the bottom of receiver.

- Within 6 seconds of the previous step, press and release the “connect” button on bottom of the wireless mouse, and the “connect” small button on the top-right of the keyboard.
- After above “connect” procedure, the same ID is selected on both of the receiver and the mouse.
- Please move the mouse to operate its cursor and test some keyboard’s function. If there is problem, please do the connect setting procedure again or check the trouble shooting guide.

## Operation Guide

### Battery Low Indication

When the voltage level of the battery goes down under the preset level, the scrolling wheel will flash at least three times on moving or clicking the mouse. Although the mouse can still work for a while, the user, at this time, should have a new set of batteries ready for replacement. Or, if the user has a companion charger base, and two re-chargeable batteries are inside the mouse, charge the mouse as soon as possible.

### Power off the mouse

1. Be sure the mouse is **NOT** in sleep mode. If it is, press any key to wake it up.
2. Press and hold the Connect button on the bottom of the mouse for more than 2 seconds. (The red light will go off while the Connect button is depressed.)
3. Wait until the red light flash once. Release the Connect button.
4. Now, the mouse is in power off mode. No operation can be done.

### Power on the mouse

To activate the mouse again, press the Connect button on the bottom of the mouse once. (**DO NOT** depress the Connect button for more than 1.5 seconds when resuming the mouse from power off mode.) The red light will turn on, and the mouse is ready for normal operation.

**Note:** Be sure to press the connect button firmly in procedure, if the connect button is not depressed steadily the red light will be on before 2 seconds expire. This will result in a change of channel and ID. Don't panic, just re-connect the mouse to the receiver, and follow step 4 again.

### **Operations on power saving mode**

In order to conserve battery power, the mouse is designed to reduce power consumption gradually from standby mode to sleep mode, if it is not being used.

**Standby mode** – Around 2 seconds after the mouse stops moving, it enter into standby mode.

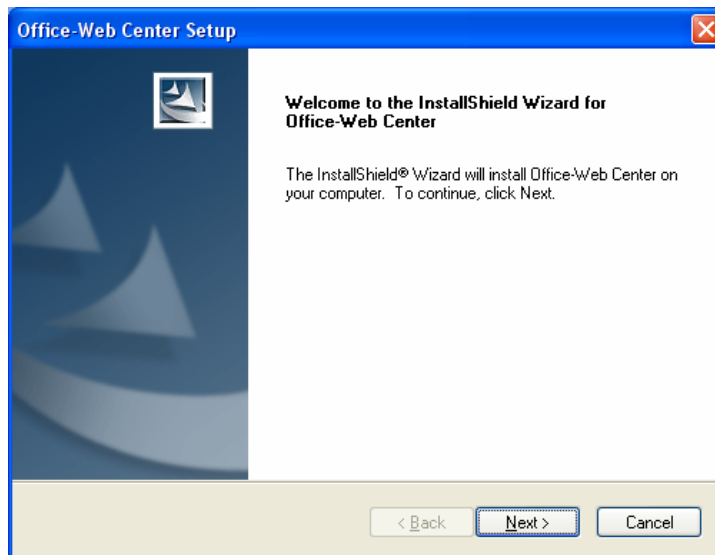
**Sleep mode** – If the mouse is left intact for around 8 minutes, it goes to sleep mode and shuts down the optical sensor to maintain minimum power consumption. No moving operation is possible in this mode.

**Wake up the mouse** – This mouse can work promptly under Standby mode so users might not be able to tell the existence of this mode. But, in sleep mode, users have to press any button to wake up the mouse for normal operation.

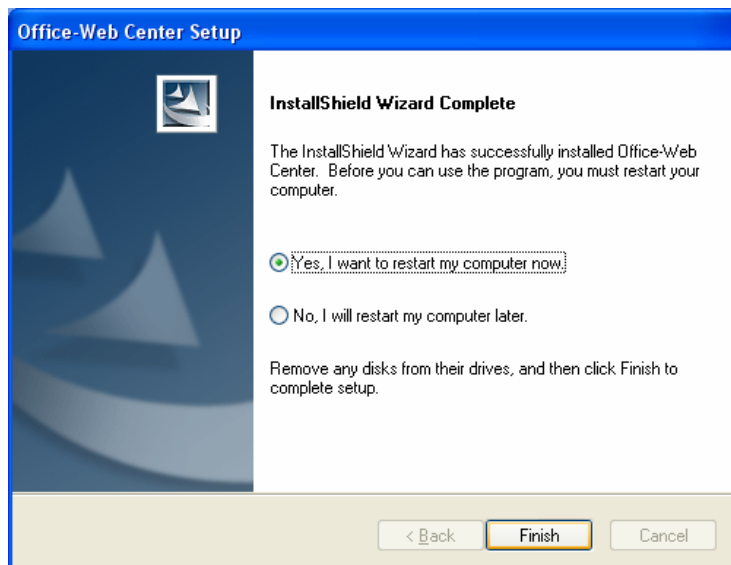
## Installing the Software

To install the software, please follow the steps below to finish:

1. Insert the Auto-Run CD-ROM onto CD-ROM driver, the installation menu will be executed automatically. (If the auto-run does not function itself, double-click the “**setup**” icon in the CD files.)
2. The setup program will guide you to finish the installation step by step



After you finish the installation, select "Restart" to reboot your system and activate multimedia hot keys and wheel scrolling functions.



## Codeless Multimedia/ Internet Keyboard

### Hot-Key Functions

**Note:** Please make sure that both hardware and software are correctly installed in your system before proceeding to use the Multimedia/ Web Keys.

The Multimedia Keys on the keyboard are labeled as follows:



1. Play/Pause: Press this button once to play CD/VCD, press again to pause playing
2. Vol +: Increase volume
3. Vol -: Decrease the volume.
4. Mute: Press this button once to mute the volume, press again to un-mute

**The Web Keys on the keyboard are labeled as follows:**

1. WWW: Press this button to launch the default Internet browser application
2. E-mail: Press this button to launch the default E-mail application.





3. Favorites: Press this button to bring up “ My Favorites Window”, Press again to close “My Favorites Window”.
4. Search: Press this button to bring up “Search window” for web address, Press again to close “Search window”.
5. My Computer: Press this button to launch the default File-Manager browser.
6. Calculator: Press this button to launch the default calculator application.
7. Calendar: Press this button to launch the default calendar application.
8. Power on/ off: Turn on/ off computer

## **MAKING THE KEYBOARD KEYS FOR OTHER ASSIGNMENTS**

- Start Multimedia/ Web driver from the Control Panel or double click the mouse icon on the Windows Taskbar.
- The Keyboard Properties display, go to the hot-key assignments area and choose from the available options to set up your keyboard.
- Click the down arrow to view the list of functions. Use the scroll bar to see other functions not displayed. Choose a function by clicking it. The function you have selected is displayed and highlighted.

## **MAKING THE MOUSE BUTTONS FOR OTHER ASSIGNMENTS**

- Start Multimedia/ Web driver from the Control Panel or double click the mouse icon on the Windows Taskbar.
- The Mouse Properties display, go to the button assignments area and choose from the available options to set up your mouse.
- Click the down arrow to view the list of functions. Use the scroll bar to see other functions not displayed. Choose a function by clicking it. The function you have selected is displayed and highlighted.
- The wheel functions both as a wheel and as a third button. As a wheel, simply roll the wheel. To use the wheel like a standard mouse button, click the wheel and select a function for this button.

## **Uninstalling the Software**

### **How to uninstall the Mouse Driver and Application Software**

The Mouse driver can be removed from Windows (except Windows 3.1x) by clicking the Add/Remove Programs icon in the Control Panel. Select "Remove" button.

## GENERAL SPECIFICATIONS

- 800dpi hardware resolution
- Multimedia/ Web function keys design.
- Digital Radio Frequency wireless mouse, keyboard with receiver
- 1 channel and 256 ID selections for your mouse options to prevent interruption
- 1 channel and 256 ID selections for your keyboard options to prevent interruption
- 3 buttons design with scrolling wheel
- Ergonomic design for comfortable grip

### Electromagnetic Characteristics (EMC)

This unit complies with Part 15 of FCC Rules.

Operation is subject to following two conditions:

- (1) This device may not cause harmful interference.
- (2) This device must accept any interference received, including interference that may cause undesired operation.



Tested to comply with FCC standards  
For home or office use

- **CE - Type acceptance:** ETS 300 220 short range devices

### Transmitter (Mouse)

- Distance: 3 feet typical
- Power: 2.4V DC (Two AA size of alkaline batteries)
- Carrier Frequency: 27.045 MHz
- Dimensions: 98\*56\*37 mm
- Weight: 86 grams

### Transmitter (Keyboard)

- Distance: 3 feet typical
- Power: 3V DC (Two AA size of alkaline batteries)

- Carrier Frequency: 27 MHz . Dimensions: 470\*230\*27 mm
- Weight: 735 grams

### **Receiver**

- Interface: USB
- Power: 5V DC, 100mA MAX connected to host computer
- Dimensions: 75\*75\*19 mm (without counting the extended USB connector)
- Weight: 97 grams

### **ELECTRIC SPECIFICATIONS**

- Operating Voltage : Transmitter: 3V DC (powered by batteries)  
Receiver: 5V DC (powered by USB port)
- Operating Current : Transmitter (mouse) : 45mA, operate on a white Paper  
Transmitter (keyboard): 1.5mA  
Receiver: 16mA typical
- Standby Current : 6mA
- Sleep Current : 240uA
- Modulation Type : FSK

### **TROUBLESHOOTING**

1. **Mouse does not function** . If mouse is not functional, please turn off the computer first. . Check the receiver and make sure it is firmly attached to the USB port of the computer.
  - Check the placement of batteries and see if they are properly connecting.
  - The "+" and "-" on the batteries must match the "+" and "-" on the slots. If the batteries aren't inserted correctly, the device won't work.
  - Restart the computer again. If the LED inside the receiver does not light up when moving the mouse, please re-connect the mouse to the

receiver.

**Q:** The mouse cursor can only move left & right during operation (it could be caused by low battery or the optical sensor's data error).

**A:** Please take out one of batteries and put it back for a power reset and then redo the connect procedure.

**Q:** The mouse does not work after waking up from power off mode by pressing the connect button once.

**A:** This might be caused by imprecisely depressing the connect button to wake up the mouse. Users can gain back normal operation by pressing connect button on the mouse first, and then pressing the one on the receiver. As soon as the LED inside the receiver starts flashing, the mouse is ready to operate.

*Optical Sensor Mouse functions best on surfaces with details for tracking. It may not function on reflective, reflective pattern or non-visible detail surfaces!*

## **2. Reducing Interference with Other Wireless Devices**

- Reducing Interference with Other Wireless Devices: All 27MHz radio-based devices are subject to interference from other 27MHz radio-based devices, such as cordless telephones, cordless baby monitors, and cordless toys. It may help to move the receiver unit and the base unit of other wireless devices (such as cordless telephone cradle) as far apart as possible. You may need to try several times for a location that is best in your operating environment.
- Move the receiver and the mouse closer to each other so that the receiver is relatively shorter in distance to the mouse than to other 27MHz transmitters. You may need to re-establish the "connection".

**Note:** Avoid using this device on a metal surface because a large surface of iron, aluminum, copper, or other metal may act like a shielding to the RF antenna of the mouse and the receiver.

## **3. Interference with other RF wireless mouse**

If the interference comes from other same model of RF wireless mice,

please “Setting up connection between mouse and receiver” of the installation guide to switch to a new RF channel. A new identification code is also generated upon the completion of channel switching. Normally, the effective transmission distance is about 3 feet, depending on the environment. If the effective distance between the mouse and the receiver is bad, try to change the location of the receiver.

#### **4. If you have difficulty connecting the wireless mouse:**

Increase the distance between the set of wireless mouse and other radio device units.

Turn off the other wireless devices, or their base units that are in close proximity to the receiver of this wireless mouse. Try connecting the wireless mouse and its receiver again. To verify that your device is connected and working properly, open a document and try the device.

#### **5. My keyboard or mouse does not work or does not work properly after installation**

Make sure you have connected the receiver correctly. For optimal performance, place the receiver at least 8 inches or 20 centimeters away from other electrical devices, such as the computer, the computer monitor, or external storages devices.

Make sure you have installed the batteries correctly.

Make sure you have set the same ID on both transmitter (mouse and keyboard) and the receiver (see Setting the ID under Hardware Installation).

If the problem persists, try an alternative ID selection to avoid possible interference. Remember to set the same ID on both transmitter and receiver.

#### **6. My keyboard or mouse is not detected**

Make sure you have connected the receiver correctly. Do not plug or unplug the receiver cables while the computer is running. You may have other system devices that conflict with the mouse and keyboard. Check the IRQ / address settings of these devices for conflicts and change the settings as required.

### **Federal Communication Commission Interference Statement**

This equipment has been tested and found to comply with the limits for a Class B digital device, pursuant to Part 15 of the FCC Rules. These limits are designed to provide reasonable protection against harmful interference in a residential installation. This equipment generates, uses and can radiate radio frequency energy and, if not installed and used in accordance with the instructions, may cause harmful interference to radio communications. However, there is no guarantee that interference will not occur in a particular installation. If this equipment does cause harmful interference to radio or television reception, which can be determined by turning the equipment off and on, the user is encouraged to try to correct the interference by one of the following measures:

- Reorient or relocate the receiving antenna.
- Increase the separation between the equipment and receiver.
- Connect the equipment into an outlet on a circuit different from that to which the receiver is connected.
- Consult the dealer or an experienced radio/TV technician for help. FCC Caution: Any changes or modifications not expressly approved by the party responsible for compliance could void the user's authority to operate this equipment.

This device complies with Part 15 of the FCC Rules. Operation is subject to the following two conditions: (1) This device may not cause harmful interference, and (2) this device must accept any interference received, including interference that may cause undesired operation.

#### **IMPORTANT NOTE:**

This transmitter must not be co-located or operating in conjunction with any other antenna or transmitter.