



RF WIRELESS MULTIMEDIA MOUSE

USER'S MANUAL

Model #: MW1053

Important Ergonomic Information

Some experts believe that using any mouse or trackball may cause serious injury to hands, wrists, arms, neck, or back. If you feel pain, numbness, or weakness in these areas, see a qualified health professional.

TO REDUCE THE RISK OF INJURY, FOLLOW THESE PRECAUTIONS:

- Take frequent breaks, Get up and walk around several times every hour.
- Vary your tasks throughout the day.
- Keep your shoulders relaxed with your elbows at your side. Position your keyboard and mouse so you do not have to reach.
- Adjust your chair and keyboard so your upper arms and wrists are straight.
- Avoid resting your wrists on sharp edges.

Before you begin

- Keep this installation guide for future reference! It contains Important Troubleshooting Information.
- Keep your old PS/2 mouse as back-up devices.

Getting Started

Congratulations on your purchase of a RF (Radio Frequency) wireless & multimedia mouse. By using the advanced RF technology, there is fully 360° operation, no line-of-sight required between receiver and this mouse. The Radius Mouse doesn't have to aim at the receiver when using.

Package Contains

Your Radius Mouse package includes the following:

1. Radius Mouse
2. Receiver with cable
3. Floppy disk /or CD-ROM
4. User's manual
5. 2 AAA batteries

Note : If any part is missing, please contact your dealer for a replacement immediately.

Precaution

! Notebook computer is not recommended. This RF wireless mouse is designed to use with desktop computer. PS2 ports of different notebooks have different data format. Some of them might not fully compatible with this RF wireless mouse. Hence, we highly recommend using this RF wireless mouse with desktop computer.

! For optimal performance, place the receiver at least 8 inches or 20 centimeters away from other electrical devices, such as the computer, the computer monitor, speakers or other external storage drives.

Installation Guide

Step 1. Connecting the Receiver

Before using this Radius Mouse, you need to connect the included receiver to your computer first.

PS/2 version

If you are purchasing a PS/2 version, there is a small icon on the molding head of the cable, so you can easily recognize the mouse cable. (Refer Fig-1)



PS/2 mouse cable connector

Fig-1

Please follow the steps below to finish the connecting:

1. Turn off your computer
2. Remove the current PS/2 mouse (*If you use an USB or Serial-type mouse, we suggest you to keep it until you have verified that the wireless device is properly connected and working.*)
3. Plug the mouse cable end into the PS/2 mouse port

Step 2. Setting up the correct channel for both of receiver and mouse

This RF wireless mouse provides 2 different carriers channel and up to 256 identification codes to avoid interference with other radio devices or other same model RF wireless mouse. Before you using the wireless mouse, please set the same carrier frequency and

ID channels for both receiver and mouse.

Please follow the steps as below to set up:

1. Turn to the bottom of the receiver and you will see a small rectangular hole (take the cover as Fig-2.1) and a slide switch (channel selection, refer to Fig-2.2).



Fig-2.1

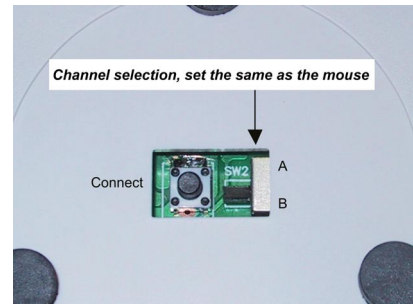


Fig-

2. Remove the batteries cover by pressing the opening tabs **and** pull the battery cover (the top cover of the mouse) out (refer the right Fig-2.3). The carrier channel is set by a slide switch with A or B positions. Make sure the switches have the same setting as the receiver (refer the right Fig-2.4, it is pre-set at factory).



Fig-2.3



Fig-2.4

Step 3. Installing the Batteries

This RF wireless mouse uses 2 AA batteries. To apply the batteries, please follow the steps as below:

1. Turn the mouse to the bottom side
2. Remove the batteries cover by moving the opening tabs and pull the battery cover (the top cover of the mouse) out (refer to the Fig-2.3).
3. There are signs to indicate batteries' positive and negative poles. Follow the signs to place the batteries
4. Place the batteries cover back and make sure it is firmly closed

Step 4. Establish communication between the receiver and the mouse (select identification codes).

- Press and release the connect button on bottom of the wireless mouse (refer to Fig-3.1).
- Use a pen or pencil to press and release the connect button on the receiver (refer to Fig-3.2).
- The "connect" light on the top dome of receiver will flash while the same ID is selected on both of the receiver and the mouse.



Fig-3.1

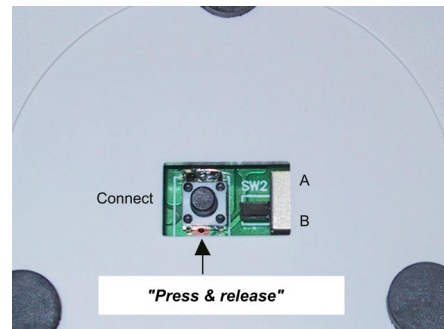


Fig-3.2

Battery Warning!

When replace the batteries, use alkaline. You may use other heavy-duty NiMH batteries, but do not mix them with alkaline. Do not mix used and new batteries together!

Step 4. Installing the Software

To install the software, please follow the steps below to finish:

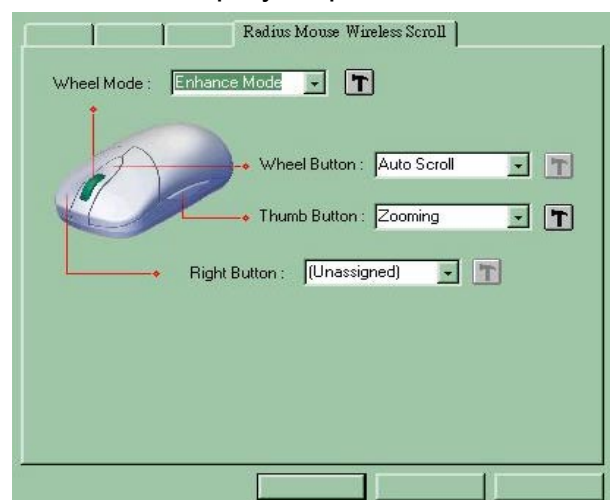
If the package contains a floppy disk

1. Insert the floppy disk into floppy driver, then type "A:\setup" from RUN, START, Click OK or press ENTER.
2. Choose the Radius Mouse Wireless Scroll
3. The setup program will guide you to finish the installation step by step

If the package contains a CD-ROM

1. Insert the Auto-Run CD-ROM onto CD-ROM driver, the installation menu will be executed automatically. (If not, Type "D:\autorun" (or "E:\autorun"...)) from RUN, START, Click OK or press ENTER)
2. Choose the Radius Mouse Wireless Scroll
3. The setup program will guide you to finish the installation step by step

After you finish the installation, select "Restart" to reboot your system and active multimedia hot keys and wheel scrolling functions.



Operation

Using the Multimedia Functions

When you install the included software driver, the left, middle, and side (second, third, and fourth) buttons are all definable to perform 34 functions like : AutoScroll, Backspace, Zoom, Page up, Page down.... F1 ...F12

Power saving mode and wake up

While this mouse has not been operated for 2 minutes, it will turn into power saving mode. Please move this mouse more than 0.3 second or double click any key switch to wake up the mouse (to stop the power saving mode).

GENERAL SPECIFICATIONS

- Digital Radio Frequency wireless mouse with receiver
- 2 channels and 256 ID selections for your options to prevent interruption.
- 4 buttons design for multimedia purpose to immediately play
- video/audio sources or get into Internet with a single click
- The Second, Third and Fourth buttons assignment
- Ergonomic design for comfortable grip

Electromagnetic Characteristics (EMC)

FCC ID:NIYMW1053

This unit complies with Part 15 of FCC Rules.

Operation is subject to following two conditions:

- (1)This device may not cause harmful interference.**
- (2)This device must accept any interference received, including interference that may cause undesired operation.**



**Tested To Comply With
FCC Standards**

- CE - Type acceptance: ETS 300 220 Short range devices
- **Transmitter**
- Distance: less than 6 feet (2 meters)
- Power: 3V DC (2 AAA batteries)
- Carrier Frequency: 27 MHZ

- Dimensions: 120*65*35 mm
- Weight: 900 grams
- **Receiver**
- Interface: PS2 or USB or USB + PS/2
- Power: 5V DC, 100mA MAX connected to host computer
- Dimensions: 85*85*33 mm
- Weight: 140 grams

ELECTRIC SPECIFICATIONS

- Operating Voltage: Transmitter: 1.8 to 3.2V DC (powered by batteries)
Receiver: 4.5 to 5.5V DC (powered by PS/2 port)
- Operating Current: Transmitter: 11mA
Receiver: 30mA typical
- Standby Current: Transmitter: 0.2mA or lower
- FSK transmission, 4K transmission rate with one way error detection

Troubleshooting

1. Mouse does not function

- If mouse is not functional, please turn off the computer first.
- Check the cable is firmly attached to the computer mouse port.
- Check the channel selection of both receiver and mouse are the same.
- Check if the batteries are properly connecting.
The "+" and "-" on the batteries must match the "+" and "-" on the slots. If the batteries aren't inserted correctly, the device won't work.
- Restart the computer again.
- If you used another brand of mouse, did you **uninstall** the software for those devices?
For more information, refer to the other device's documentation or the original documentation that came with your computer.

2. Reducing Interference with Other Wireless Devices

All 27MHz radio-based devices are subject to interference from other 27MHz radio-based devices, such as cordless telephones, cordless baby monitors, and cordless toys. It may help to move the receiver unit and the base unit for the other wireless device

(such as cordless telephone cradle) as far apart as possible. You may need to experiment to determine the locations that are best for your environment.

3. Interference with other RF wireless mouse

Please switch the channel to a different carrier. To do so, you need to adjust both receiver and mouse to the new channel (A or B). To reset the channel, please see “Step 2, Setting up the correct channel for both of receiver and mouse” of the installation guide. Remember to establish communication between the receiver and the mouse by reset identification codes.

Normally, the effective transmit distance is about 4 to 6 feet, depending on the environment. If the effective distance between the mouse and the receiver is bad, try to change the location of the receiver.

4. If you have difficulty connecting the wireless mouse:

- Increase the distance between the set of wireless mouse and other radio device units.
- Turn off the other wireless devices, or their base units, that are in close proximity to the receiver of this wireless mouse.
- Try connecting the wireless mouse and its receiver again.
- To verify that your device is connected and working properly, open a document and try the device.

For additional suggestions, read the [FCC Compliance Statement](#) on the follow page.