

Cordless Mouse

DEXIN / MWP83-P1M USER'S MANUAL (27MHz)

Important Ergonomic Information

Some experts believe that using any mouse or trackball may cause serious injury to hands, wrists, arms, neck, or back. If you feel pain, numbness, or weakness in these areas, see a qualified health professional.

TO REDUCE THE RISK OF INJURY, FOLLOW THESE PRECAUTIONS:

- ☞ Take frequent breaks, get up and walk around several times every hour.
- ☞ Vary your tasks throughout the day.
- ☞ Keep your shoulders relaxed with your elbows at your side. Position your keyboard and mouse so you do not have to reach.
- ☞ Adjust your chair and keyboard so your upper arms and wrists are straight.
- ☞ Avoid resting your wrists on sharp edges.

System Requirement

- ☞ Mouse compatible with standard Microsoft OS
- ☞ 3rd button and wheel function require Win98/ ME/ 2000/ XP/ Vista
- ☞ 4th & 5th buttons require Windows™, 2000 or XP, Vista, or driver installation
- ☞ If your computer's operating system is Windows 98/ 98SE, please prepare the Windows98 or 98SE compact disk for system's request during the installation of mouse.

Before you begin

- ☞ Keep this installation guide for future reference! It contains Important Troubleshooting Information.
- ☞ Keep your old PS/2 or USB mouse as back-up devices.

Getting Started

Congratulations on your purchase of an 800dpi Cordless Mouse. By using the advanced RF technology a 360° operation is possible and no line-of-sight is required between the receiver and the mouse. The 800dpi high resolution will bring users the best operation accuracy and efficiency, especially when the pixel of display over 1024*768 pixel. It operates at twice the speed and only requires 1/4 of the space in comparison to a 400 dpi mouse.

Battery and power consumption are always the key issues for a wireless product, by simply pressing the “connect” button, or sliding the power ON/OFF switch in the bottom, the two power on/off modes and low-power Indicator on the receiver will blink to indicate battery low power status makes MWP83-P1M a smart companion for laptop users.

Package Contains

Your MWP83-P1M Cordless Mouse package includes the following:

1. The Cordless Mouse
2. USB Storable Receiver
3. User's manual
4. 2 AAA Alkaline batteries

Note : If any part is missing, please contact your dealer for a replacement immediately.

Precaution

The Cordless Mouse **can not** work on a glass or mirror surface. Avoid operating this mouse on a glossy surface; otherwise, this mouse may not operate normally.

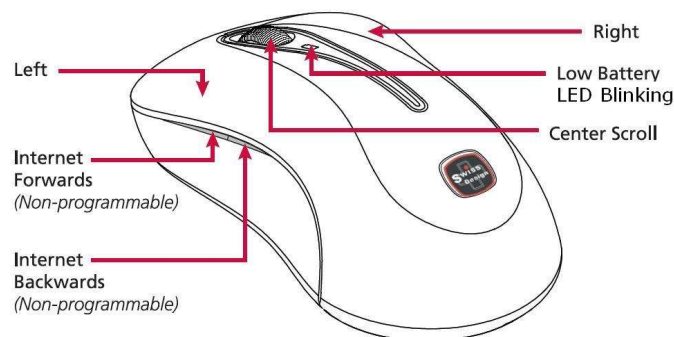
For consideration of saving battery power, it is strongly recommended to operate an Cordless Mouse on a bright surface with fine texture to obtain lower power consumption of the high illumination LED. A very dark surface will cause higher power consumption.

For optimal performance, place the receiver at least 8 inches or 20 centimeters away from other electrical devices, such as the computer, the computer monitor, speakers or other external storage drives.

For a better transmission distance, avoid using this device on a metal plate or desktop because a large surface of iron, aluminum, copper and other metal will act as a shield or ground to the RF antenna of the mouse and receiver. Operating on a metal surface may shorten the transmission distance.

If your notebook computer has a metal (contains Al or Mg) case, the metal housing of the LCD panel will isolate partial radiation of the RF signal from the mouse. This could possibly result in reducing the distance of transmission when you operate the mouse right in front of the notebook and when the receiver is connected on the back of the notebook. However, the RF mouse should work properly while you are operating the mouse just beside your desktop computer.

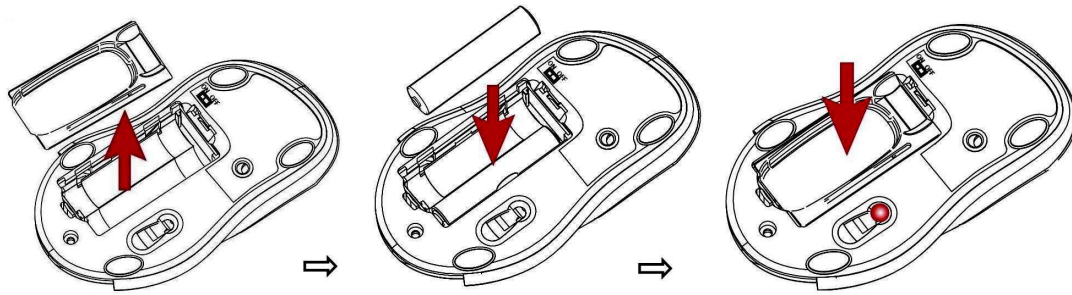
Overview



Hardware Installation Guide (Mouse)

Insert the battery

1. Open the battery cover.
2. Insert 2 AAA alkaline batteries in correct direction
3. Close the battery cover.



Connect the receiver with computer.

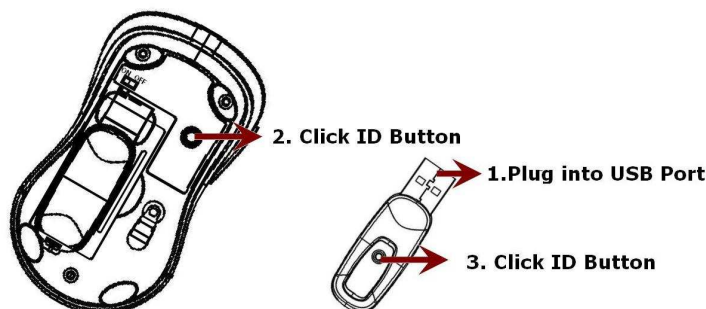
1. Turn off your computer
2. Disconnect the current mouse
3. Plug the USB connector (receiver) into USB port (computer).
4. Turn the computer on
 - a. USB is a PnP device; you can plug the device no matter the computer is on or off. Of course, you can remove USB device in the same way.
 - b. If the device is HD or pen drive or any device which can store files, stop the device than remove is the best way to protect.

Synchronize the RF Mouse (Pairing)

If the mouse is in sleep mode click the mouse button once to wake it up.

1. Bring the mouse within 1 ft range from the receiver.
2. Power on the mouse.
3. Hold the mouse upside-down and use a pointed object, such as a pen tip, to click the CONNECT button (ID button) once.

Note. *Poke the Mouse Connect button first, and then click the receiver's button.



4. Click the receiver's connect button once, within 5 seconds after clicking the

connect button on the mouse. The LED will start blinking, when the connection is established.

Move the mouse around to test if it was successful.

5. If the synchronization is not successful for some reason please
 - a. Remove the batteries and unplug the receivers
 - b. Wait for 20 sec then to try the step 1 to 4 again

Note: * During normal use, please make sure that the mouse is no more than 3 ft away from the receiver in order to have reliable connection.

** The LED on the receiver will light up or blink while the mouse is being used

Operation Guide

BATTERY LOW INDICATION

When battery voltage level goes under the preset level, the LEDs indicator on the mouse wheel cover and the receiver will blink frequency. Although the mouse can still work for a while, the user, at this time, should have a new set of batteries ready for replacement as soon as possible.

POWER ON/OFF MOUSE

MWP83-P1M designed 2 methods for power saving, you can power ON/OFF by A or B.

A. By sliding the ON/ OFF switch on the bottom.

B. The patent of ID power ON/OFF function, as following:

Power OFF the mouse

1. Be sure the mouse is **NOT** in sleep mode. If it is, press any key to wake it up.
2. Press and hold the Connect button on the bottom of the mouse for more than 2 seconds.
3. The red light will flash the go off.

4. Now, the mouse is in power off mode. No operation can be done.

Power on the mouse

To activate the mouse again, press the Connect button on the bottom of the mouse once. (**DO NOT** depresses the Connect button for more than 1.5 seconds when resuming the mouse from power off mode.) The red light will turn on, and the mouse is ready for normal operation.

Note:

Slide switch must in "ON".

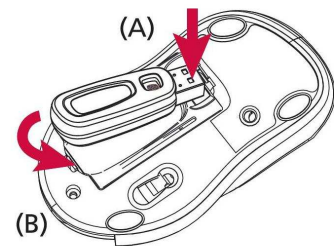
RECEIVER STORAGE

For travel and loss prevention, store receiver in cavity on the bottom of the mouse.

Storing receiver:

To store in the mouse bottom, place USB plug end of receiver (A) into place then snap bottom of receiver into position (B). Receiver will now be locked into position.

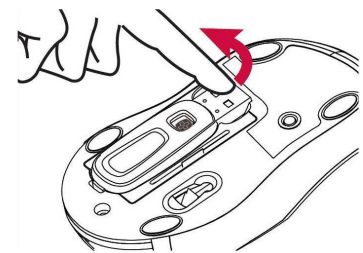
Storing Receiver:



Removing Receiver:

Using the tip of your finger, lift receiver from USB plug end first and remove from cavity. The USB is now active and ready to be inserted into your computer's USB port.

Removing Receiver:



GENERAL SPECIFICATIONS

- 5 Buttons Cordless Mouse.
- 800 dpi hardware resolution.
- Low power indicator.
- Power ON/OFF switch.
- 1 channel RF Digital Radio Frequency.
- Ergonomic and enlarge buttons design for comfortable grip.
- 2 AAA batteries to operate the mouse.

Troubleshooting

1. Mouse does not function

- If mouse is not functional, please turn off the computer first.
- Check the receiver and make sure it is firmly attached to the USB port of the computer.
- Check the placement of batteries and see if they are properly connecting.
- The "+" and "-" on the batteries must match the "+" and "-" on the slots. If the batteries aren't inserted correctly, the device won't work.
- Restart the computer again. If the LED inside the receiver does not light up when moving the mouse, please re-connect the mouse to the receiver.

Q: The mouse cursor can only move left & right during operation (it could be caused by low battery or the optical sensor's data error).

A: Please take out one of batteries and put it back for a power reset and then redo the connect procedure.

Q: The mouse does not work after waking up from power off mode by pressing the connect button once.

A: This might be caused by imprecisely depressing the connect button to wake up the mouse. Users can gain back normal operation by pressing connect button on the mouse first, and then pressing the one on the receiver. As soon as the LED inside the receiver starts flashing, the mouse is ready to operate.

Optical Sensor Mouse functions best on surfaces with details for tracking. It may not function on reflective, reflective pattern or non-visible detail surfaces!

2. Reducing Interference with Other Wireless Devices

- Reducing Interference with Other Wireless Devices:

All 27MHz radio-based devices are subject to interference from other 27MHz radio-based devices, such as wireless telephones, wireless baby monitors, and wireless toys. It may help to move the receiver unit and the base unit of other wireless devices (such as wireless telephone cradle) as far apart as possible.

You may need to try several times for a location that is best in your operating environment.

- Move the receiver and the mouse closer to each other so that the receiver is relatively shorter in distance to the mouse than to other 27MHz transmitters. You may need to re-establish the “connection”.

Note: Avoid using this device on a metal surface because a large surface of iron, aluminum, copper, or other metal may act like a shielding to the RF antenna of the mouse and the receiver.

3. Interference with other RF wireless mouse

If the interference comes from other same model of RF wireless mice, please “Setting up connection between mouse and receiver” of the installation guide to switch to a new RF channel. A new identification code is also generated upon the completion of channel switching.

Normally, the effective transmission distance is about 3 feet, depending on the environment. If the effective distance between the mouse and the receiver is bad, try to change the location of the receiver.

4. If you have difficulty connecting the wireless mouse:

- Increase the distance between the set of wireless mouse and other radio device units.
- Turn off the other wireless devices, or their base units that are in close proximity to the receiver of this wireless mouse.
- Try connecting the wireless mouse and its receiver again.
- To verify that your device is connected and working properly, open a document and try the device.

Electromagnetic Characteristics (EMC)



**Tested to comply with FCC standards
For home or office use**

This device complies with Part 15 of the FCC Rules. Operation is subject to the following two conditions: (1) This device may not cause harmful interference, and (2) this device must accept any interference received, including interference that may cause undesired operation.

CE - Type acceptance: EN300 220 Short Range Device

Federal Communication Commission Interference Statement

This equipment has been tested and found to comply with the limits for a Class B digital device, pursuant to Part 15 of the FCC Rules. These limits are designed to provide reasonable protection against harmful interference in a residential installation. This equipment generates uses and can radiate radio frequency energy and, if not installed and used in accordance with the instructions, may cause harmful interference to radio communications. However, there is no guarantee that interference will not occur in a particular installation. If this equipment does cause harmful interference to radio or television reception, which can be determined by turning the equipment off and on, the user is encouraged to try to correct the interference by one of the following measures:

- Reorient or relocate the receiving antenna.
- Increase the separation between the equipment and receiver.
- Connect the equipment into an outlet on a circuit different from that to which the receiver is connected.
- Consult the dealer or an experienced radio/TV technician for help.

FCC Caution: Any changes or modifications not expressly approved by the party responsible for compliance could void the user's authority to operate this equipment.

This device complies with Part 15 of the FCC Rules. Operation is subject to the following two conditions: (1) This device may not cause harmful interference, and (2) this device must accept any interference received, including interference that may cause undesired operation.

IMPORTANT NOTE:

FCC Radiation Exposure Statement:

This equipment complies with FCC RF radiation exposure limits set forth for an uncontrolled environment. To maintain compliance with FCC RF exposure compliance requirements, please avoid direct contact to the transmitting antenna

during transmitting.

This transmitter must not be co-located or operating in conjunction with any other antenna or transmitter.