

DIALOGUE

Dialogue Flybook

User's Manual

Revision: 1.02

Part Number: DTC-FA33I-01-02

Flybook

Thanks

We, Dialogue Technology Corp., thank you for purchasing FlyBook. This advanced, ultra-portable and complete computer with most popular wireless and wired communication features built-in can now become your closest companion that keeps the computing and information available to you in most convenient means. We hope you to enjoy the use of FlyBook. And for any question, please refer to this manual or contact us. We will be very glad to serve you.

Announcement

Dialogue Technology Corporation is a registered trademark.

FlyBook is a trademark of Dialogue Technology Corporation.

All trade names referred to in this document are the servicemark, trademark or registered trademark of respective manufactures or companies.

Disclaimer

Specifications and information in this document are subject to change without notice. Please visit our web site (www.dialogue.com.tw) or contact us to get the latest information.

With regards to the accuracy of this document, no warranty is made or implied.

Copyright

No part of this document may be copied or reproduced in any form or by any means without the express written permission of © 2003 Dialogue Technology Corporation.

About this user's manual

This user's manual includes the essential information for the users who need to use or manage the FlyBook computer by themselves.

The content covers all FlyBook's models. Please check your own model and skip what you do not need to know.

Windows® XP Home edition is the default operating system of the FlyBook computer. All of the descriptions in this manual are under Windows® XP Home edition.

If this user's guide could not help you with the problems, please read the on-line helps in your computer, consult your dealer or visit our web site (<http://www.dialogue.com.tw>) to get more information.

Table of Contents

Chapter 1 Before You Start

Packing list	2
Statement of limited warranty	4
What the warranty covers	4
What the warranty does not cover	5
How to obtain the warranty service	5
Limitation of liability	6
How to get help	7
Best care for your FlyBook	7
Taking care of your computer	7
Taking care of your AC-to-DC adapter and power cord	8
Taking care of your battery pack	9

Chapter 2 Introduction

A glance at your FlyBook computer	13
Front view	13
Rear view	16
Left view	18
Right view	19
Bottom view	20
Features	21
Processor	21
Memory	21
Storage	21
Power	21
Display	22
Audio	22
Input devices	22
I/O ports	22
Communication	23
Convertible display screen and working modes	24
Working modes	24
Notebook mode	24
Tablet mode	25

Turning the computer to a feasible working mode	25
To tablet mode	25
To notebook mode	26
Innovative "Prompt to Play" user's interface	27
Multimedia	28
Display to a VGA display device	28
Display to a video display device	28
Sound or voice to an earphone or speakers	28
Sound or voice from an external microphone	28
Connectivity	29
Fast data link	29
USB link	29
IEEE 1394 link	29
Ethernet (RJ-45) link	29
Wireless network connection	30
Bluetooth communication	30
GPRS/CDMA communication	30
MODEM (RJ-11) Telephone link	30
PC card connection	30

Chapter 3 Starting the computer

Ready your computer	32
Installing CMOS battery and DRAM module	32
Installing hard disk	33
Installing battery pack	34
Turning on the power	35
Installing operation system	36

Chapter 4 Using the computer

Indicators	38
Keyboard	39
Windows keys	40
Lock keys	41
Hot keys	42
Track points, mouse buttons, and Pan button	43
Touch Panel	44

Calibrating your touch panel	45
Display	47
Adjusting display brightness	47
Switching display output to an external display device	47
Setting display color and resolution	48
Changing display orientation	48
Audio	49
Power system	50
AC-to-DC adapter	50
Battery	50
Calibrate the battery	51
Power management	51
Under Power Schemes tab	52
Selecting a feasible running mode	52
Setting time for the automatic execution event of built-in power-	
saving schemes	53
Under Alarms tab	54
Under Power Meter tab	55
Under Advanced tab	56
Setting "Always show icon on the taskbar" checked	56
Setting "Prompt for password when computer resumes from	
standby" checked	56
Under Hibernate tab	57
Securing your computer	58
Securing your computer against unauthorized access	58
BIOS password	58
Hard disk password	58
Operation system passwords	59
Securing your computer against damage	59
Reserving backups of your personal data frequently	59
Using a strap to prevent drop	59
Recovering your system	60
From a hidden partition of built-in hard disk	60
From the system recovery CDs	60
Resetting the computer	60
Connection through options	61

USB link	61
IEEE 1394 link	61
Ethernet link	62
Configuring your connection	62
Making connection to an Ethernet	64
Wireless communications through the built-in modules	65
Wireless Network Connection.....	66
Configuring your connections.....	66
Making connection to a Wireless Network	68
Specifications	68
Bluetooth communication (Optional).....	70
Configuring your connections.....	71
Making connections to Bluetooth-equipped devices	72
GPRS communication (Optional)	73
Configuring your connection	73
Making connection to a GPRS network	75
CDMA communication (Optional)	76
Dial-up link through the built-in MODEM	77
Configuring your connection	77
Making a dial-up link	77
PC card connection	78
PC card insertion	78
PC card ejection	78

Chapter 5 Troubleshooting

How to identify the problem you encounter	80
Some typical problems when you turn on the computer	80
The Flybook does not start or boot-up	81
The hard drive or the external boot-up device is not accessed ...	81
The screen appears nothing or does not look right	81
There is no audio coming from the built-in speakers	82
The keyboard or track-point/mouse does not work properly	83
The PC Card does not seem to work properly	83
The Modem does not receive or transmit properly	83
The GPRS/CDMA module does not work properly	84
The Wireless LAN is unavailable network connection	84
The touch panel does not work properly	85
The battery can not charge or work time too short	85

Appendix

Appendix A Flybook Models

Appendix B Power On Self Test

Appendix C Tested Devices

DDR RAM Modules	92
PCMCIA/CF/CardBus	92
USB	92
IEEE 1394	93

Chapter 1
Before You Start

- NOTE**
- Do not connect the AC-to-DC adapter to supply the computer with power when it is not ready for use (DRAM, hard disk driver and battery pack have not been installed).
 - If the computer is being used for the first time, the battery pack must be fully charged.
 - Only DDR DRAM module can be applied to the computer. It is important that you must choose one of what we suggest as listed in Appendix B, otherwise, we could not guarantee your computer to perform properly.
-

Packing list

When you unpack the packing case, at least you will find the following items:

	Item	Note
1	FlyBook computer	Be cautious of taking it out of the packing case and unpack the wrappings.
2	Battery pack	It is dedicated for the FlyBook computer. Take off the protection cover before use.
3	DDR DRAM module	A standard DDR DRAM module. The memory capacity depends on how large you buy. (For a complete unit, this has been built-in)
4	Hard disk	A 2.5" slim-type standard hard disk. The storage capacity also depends on how large you buy. (For a complete unit, this has been built-in)

	Item	Note
5	AC-to-DC adapter	It is dedicated for the FlyBook computer. Read through the specifications and cautions on the adapter before use.
6	Power cord	Used to connect the AC-to-DC adapter and a AC power source.
7	Stylus pen	An input device of touch panel.
8	Read me first	A guideline to help you knowing all things about using the FlyBook computer. Read through it first of all after opening the packing case.
9	User's manual	This user's manual.
10	Recovery CD	The CDs that can help you to restore your FlyBook computer. It includes pre-installed Microsoft® Windows XP drivers and utilities that the computer needs to use.
11	Windows XP Home edition authority	A certificate from Microsoft® that proves the Windows XP Home edition installed in your FlyBook computer is legally licensed.
12	Warranty card	Clearly keeps the Product ID, service information and warranty information about your FlyBook computer.
13	Slip bag	A custom pocket bag, fit but protective to put the FlyBook computer into when moving or traveling with the computer.

Chapter 1

Chapter 2

Chapter 3

Chapter 4

Chapter 5

Appendix

Statement of limited warranty

Dialogue Technology Corporation provides 1 years of limited warranty for all FlyBook models in complete unit.

The warranties provided by Dialogue Technology Corporation in this statement of limited warranty apply only to the computer purchased for your own use, and not for resale.

All the warranty services we provide are bench based except for the specific contract.

Nothing in this statement affects any statutory rights of customers that cannot be waived or limited by contract.

This warranty gives you specific legal rights and you may have other rights which vary from different jurisdictions.

What the warranty covers

- The computer is warranted free from defects in materials and workmanship.
- The computer is warranted conforming to the official published specifications.
- The warranty period starts on the original date of installation and the date of your invoice or sales receipt is the date of installation unless Dialogue Technology Corporation or authorized resellers inform you otherwise.
- A part replaces a removed part will assume the warranty service status of the removed part only.
- Unless Dialogue Technology Corporation specifies otherwise, these warranties apply only in the country or region you purchase the computers.

What the warranty does not cover

- Any software programs got from third parties are not warranted, whether they are shipped or pre-loaded with the computer, installed subsequently or otherwise.
- Failure from misuse, virus, accident, modification, unsuitable physical or operating environment, or improper maintenance by yourself is not warranted.
- Any integrated or peripheral devices that are not provided by Dialogue Technology Corporation are not warranted.
- The warranty is voided by removal or alteration of identification labels on the computer or its parts.
- Dialogue Technology Corporation does not warrant uninterrupted or error-free operation of the computer.

How to obtain the warranty service

If the computer does not function as warranted during warranty period, please contact the service centers or authorized resellers to obtain the warranty services.

In general, you must show the information or evidence as stated on Warranty Card to the service center before you request the service.

Besides,

- Your problem
- What you have tried to resolve the problem.
- Remember to backup or secure your personal data before delivering the computer to the service center. No one can guarantee that your data can be safely reserved during the service and maintenance period.
- Provide service center or your reseller with sufficient, free, and safe access right to your computer to fulfill its obligations.

Chapter 1

Chapter 2

Chapter 3

Chapter 4

Chapter 5

Appendix

NOTE

- All the service affairs and procedures are varied from country to country or region to region. Please see your warranty card to get further information.
 - Remind you again that do not forget to backup or secure your personal data before delivering the computer to the service center.
-

Limitation of liability

- The total liability of Dialogue Technology Corporation arising out of this statement shall be limited to the amount having then actually been paid by you on the product.
- In no event shall Dialogue Technology Corporation be liable for costs of substitute products or services.
- In no event shall Dialogue Technology Corporation be liable to any entity for any special, consequential, incidental or other damages, however caused and on any theory of liability, and whether or not breach of contract, negligence or otherwise, and whether or not Dialogue Technology Corporation has been advised of the possibility of such damage.
- These limitations will apply notwithstanding any failure of essential purpose of any limited remedy provided herein.
- The limitation of liability of Dialogue Technology Corporation is cumulative, with all expenditures of Dialogue Technology Corporation being aggregated to determine satisfaction of the limit.
- The existence of claims or suits shall not enlarge or extend the limit under this statement.
- In no event shall any resellers or suppliers of Dialogue Technology Corporation be liable for any direct, indirect, consequential or other damages arising out of this statement.

How to get help

When you have any problems in using the computer, in addition to referring to this manual or on-line-helps in your computer, you can:

- Call service centers to help you solving the problems.
- Access service web site to get related information.

All of the service information can be found in your warranty card.

Best care for your FlyBook

Knowing how to take care of your FlyBook computer can avoid the computer from harm or damage. Please read through the following carefully:

Taking care of your computer

- All cautions or warnings on the computer should be noted.
- Do not expose the computer to temperatures above 50°C or below 0°C.
- Keep the computer away from direct sunlight or heat.
- Do not expose the computer to rain or moisture.
- Do not spill water or any liquid on the computer.
- Do not place the computer near to magnetic fields.
- Avoid heavy shock or vibration to the computer.
- Do not expose the computer in dusty or dirty environment.
- Do not put any objects on the top of computer.
- Do not place the computer on any uneven surface.
- Do not turn the hinge in wrong direction, or bend the upper and lower case over their allowed operational positions. Make sure the

Chapter 1

Chapter 2

Chapter 3

Chapter 4

Chapter 5

Appendix

convertible hinge is at the fixed position before closing the display screen.

- Do not slam the display screen when closing it.
- Do not operate touch-panel using any things except the stylus pen of the computer.
- Do not cover the opening on the enclosure. It will block the air convection of cooling system.
- Do not use any other AC adapters except the specific one for your computer.
- Make sure the computer is turned off and the adapter is unplugged before changing the system modules (Battery pack, DRAM module, hard disk...).

Taking care of your AC-to-DC adapter and power cord

- Read through specifications and cautions on the adapter.
- Make sure the power source is within safety ranges and stable before connecting the adapter to the source.
- Do not connect the adapter to any other devices.
- Do not place heavy objects on top of adapter or power cord, or step on them.
- Do not pull on the power cord itself but pull on the plug when unplug it.
- Disconnect the adapter from power source when the adapter does not need to work with the computer.

Taking care of your battery pack

- Read through cautions on the battery.
- Put on the connector protection cover if the battery is not used.
- Keep the battery away from direct sunlight or heat. The best temperature to keep battery is between 0°C and 30°C when it is not for work.
- Do not expose the battery to rain or moisture.
- Do not spill water or any liquid on the battery.
- Avoid heavy shock to the battery.
- Do not put any heavy objects on the top of battery.
- Keep the battery away from children.
- Periodically calibrate the battery (please refer to **System Recovery Utility Reference Guide**)
- Make sure to dispose of the battery properly and legally.

Chapter 1

Chapter 2

Chapter 3

Chapter 4

Chapter 5

Appendix

Chapter 2
Introduction

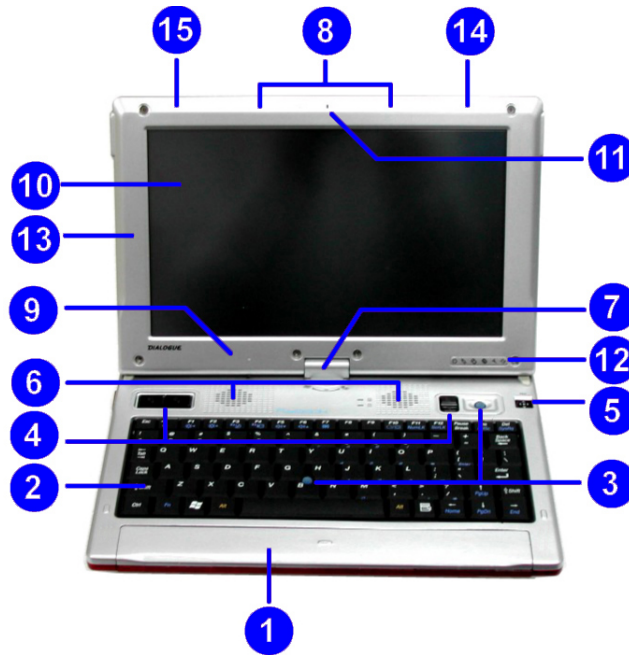
Not only a notebook computer with high performance and mobility, your FlyBook computer, with more versatile features and capabilities, pave the way for you to a brand-new life. Why your FlyBook computer is so valuable for you?

- Small form-factor and ultra-light weight make the computer to be highly portable.
- With an innovative "Prompt to Play" UI and convertible display screen, the computer could be applied under almost all operational conditions.
- All ready communications (3G & wired) cover FlyBook with every possible network. You can access information easily and instantly anytime and anywhere.
- Almost complete I/O ports make the computer competitive to a standard notebook computer.
- In spite of its small form factor, your FlyBook is capable of full functional multimedia, which is even better than most of notebook computers.

Let us show you the significant features of your FlyBook computer.

A glance at your FlyBook computer

Front view



Item	Note
1 Battery bay	A location that houses the computer's battery pack.
2 Keyboard	An input device that allows users to input data and controls the computer.
3 Track point	Pointing device which function like a mouse pointer or panning keys (When panning function is on).

Chapter 1

Chapter 2

Chapter 3

Chapter 4

Chapter 5

Appendix

	Item	Note
4	Left and right click buttons (x2)	Click devices which function like a mouse's left and right buttons. Both of them provide the same function.
5	Pan button	A switch button that allows you to toggles panning function on and off
6	Speakers (x2)	Audio output devices that play the computer's sound and voice.
7	Convertible hinge	A metallic strut with 2 shafts that can firmly support the computer's display screen when switching the computer to tablet mode or notebook mode.
8	Magnetic latch	A magnetic latch that latches the computer's display screen in both tablet mode and notebook mode.
9	Reed switch (hidden inside)	A magnetic-force-sensitive switch that will automatically turn off the display screen while the display screen is closed in notebook mode.
10	LCD display screen and pressure-sensitive touch panel	Displays the computer output and allows users to operate the computer by simply touching the screen with a stylus pen.
11	Microphone	A sound and voice input device.
12	Indicators	LEDs that show the functioning status of key parts or sub-systems.
13	GPRS antenna (built-in)	For built-in GPRS module (Either of them or none is available on select models).

	Item	Note
14	WirelessLAN antenna (built-in)	For built-in Wireless LAN module.
15	Bluetooth antenna (built-in)	For built-in Bluetooth module (Available on select models).

Chapter 1

Chapter 2

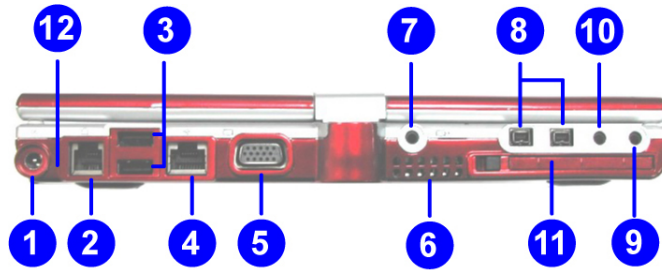
Chapter 3

Chapter 4

Chapter 5

Appendix

Rear view



Item	Note
1 Power jack	A DC-in jack that connects the computer to an AC-to-DC adapter to supply the computer with power.
2 Fax/data modem port	A RJ-11 jack that allows the computer to connect with a phone line to make a dial-up link.
3 USB port (x2)	Standard USB jacks that allow the computer to connect with any USB (1.1/2.0) devices to make links.
4 Ethernet port	A RJ-45 jack that connects the computer to a hub to make an Ethernet link.
5 External display port	A D-sub 15 jack that allows the computer to connect with an external VGA display device.
6 Hot air flow-out opening	An opening that hot air flows out.

	Item	Note
7	Video out port	A round-hole jack that allows the computer to connect with a video display device.(A special conversion is included in your package)
8	1394 port (x2)	The 4-pin 1394 jacks that allow the computer to connect with IEEE 1394 devices.
9	Earphone jack	A round-hole jack that allow the computer to connect with an earphone or speaker.
10	Microphone jack	A round-hole jack that allow the computer to connect with a microphone.
11	PC card slot	Accepts type-I or type-II CardBus PC cards.
12	Strap hole	A hole that can tie a strap to prevent the computer from any possible drop.

Chapter 1

Chapter 2

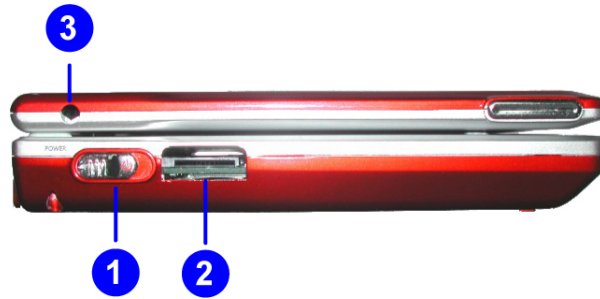
Chapter 3

Chapter 4

Chapter 5

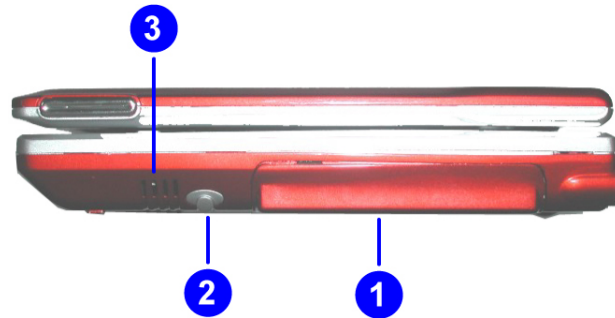
Appendix

Left view



	Item	Note
1	Power button	A button that turns on/off the computer.
2	SIM card slot	Accepts GPRS or CDMA SIM card.
3	GPRS antenna port	An antenna jack that allows the computer to connect with an external GPRS antenna.

Right view



	Item	Note
1	Hard disk bay	A location that houses the computer's hard disk.
2	Stylus pen holder	Holds a stylus pen.
3	Cool air flow opening	An opening that cool air flows in.

Chapter 1

Chapter 2

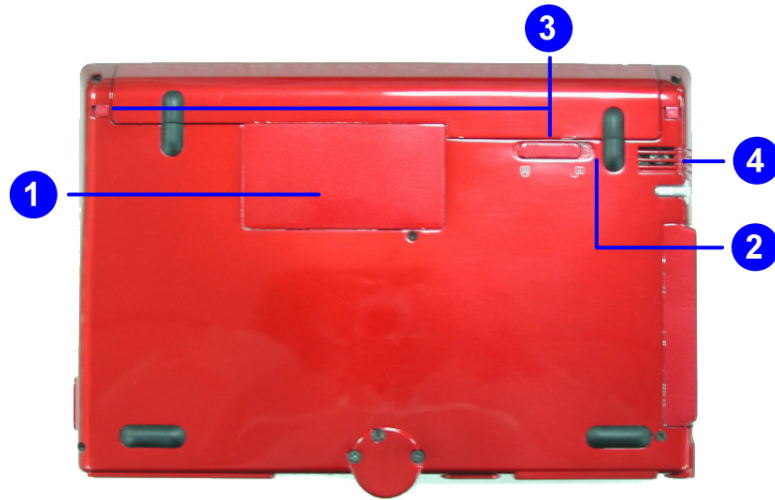
Chapter 3

Chapter 4

Chapter 5

Appendix

Bottom view



	Item	Note
1	DRAM and CMOS battery compartment	A location that houses the computer's DRAM and CMOS battery.
2	Reset switch	A switch that is used to reset the computer.
3	Battery latches (x2)	Latches the battery pack.
4	Cool air flow opening	An opening that cool air flows in.

Features

Processor

- Transmeta Crusoe TM5800 processor at 1 GHz

Memory

- System Memory: one SO-DIMM DDR-SDRAM, 512MB max.
- Video RAM: 16MB in ATI VGA chipset.
- BIOS ROM: 512KB flash ROM with boot block.

Storage

- Hard disk: 20/30/40/60 2.5" ATA/IDE hard disk.
- Memory card: through CardBus PC card slot
- CD ROM and other storage devices: external via USB / IEEE 1394 link.

Power

- High-performance power management system with ACPI (Advanced Configuration Power Interface)
- Direct DC power supply (through an AC-to-DC adapter).
- High-capacity battery pack power supply.
- Battery charging: direct DC charging (through AC-to-DC adapter).

Chapter 1

Chapter 2

Chapter 3

Chapter 4

Chapter 5

Appendix

Display

- Screen: 8.9" LTPS (Low Temperature Poly-Silicon) wide-XVGA TFT (Thin Film Transistor) LCD (Liquid Crystal Display) that displays 32-bit color (true color) at 1024*600 resolutions.
- Capable of 3D display.
- Displaying on an external VGA display device (LCD/CRT monitor, projector) support.
- Displaying on a video display device (TV) support.

Audio

- Integrated ALI (M1535+) AC-Link audio, compliant with AC97
- Built-in speakers and microphone.
- Capable of outputting sound or voice to an earphone or speakers.
- Capable of inputting sound or voice from a microphone.

Input devices

- 80-key mini-size Windows enhanced keyboard with hot keys support.
- Built-in 2 track points and 2 sets of mouse buttons (left and right button).
- Display panning support.
- Built-in pressure-sensitive, palm-rejection touch panel.

I/O ports

- D-sub15 VGA output port.
- Video output port.

-
- Earphone / line-out (Stereo).
 - Microphone in.
 - Two (2) USB2.0 ports.
 - Two (2) 1394 ports.
 - Ethernet port.
 - Fax/data modem port.
 - DC-in Jack.
 - SIM card slot (for GPRS/CDMA).
 - Type II CardBus PC card slot.

Communication

- 10/100 Mbps Ethernet link.
- Dial-up link (Built-in V.90 56K fax/data MODEM module and port).
- Wireless LAN connection (Built-in Wireless LAN module and antenna).
- Bluetooth communication (Built-in Bluetooth module and antenna)
- GPRS communication (Built-in GPRS module and antenna).

Chapter 1

Chapter 2

Chapter 3

Chapter 4

Chapter 5

Appendix

Convertible display screen and working modes

Through the convertible hinge, the computer's display screen can be rotated 180 degrees clockwise and counterclockwise. This smart design makes the computer capable of working in 2 modes, notebook mode and tablet mode. Your computer becomes a highly portable and applicable PC.

CAUTION Do not bend the screen over its allowed positions. Damages from this misuse is not included in the warranty.

Working modes

Notebook mode

When the display screen is not rotated 180 degrees clockwise and the computer is used just like a notebook computer, it is called the notebook mode.



Tablet mode

When the display screen is rotated 180 degrees clockwise and latched, and the computer is used just like a Tablet PC, it is called the tablet mode.



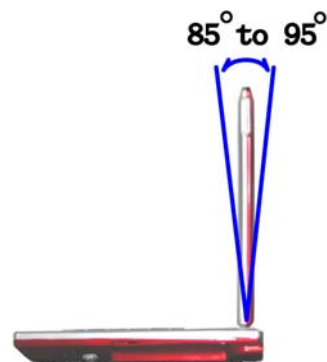
Turning the computer to a feasible working mode

You can turn the computer to a feasible working mode to meet your operation requirement. Please follow the steps below:

To tablet mode

When the computer is in notebook mode:

1. Open the display screen at an angle between 85° to 95°



Chapter 1

Chapter 2

Chapter 3

Chapter 4

Chapter 5

Appendix

2. Hold and rotate the display screen 180 degrees clockwise until the display clicks into place.



3. Gently flap down the display.



To notebook mode

When the computer is in tablet mode:

1. Turn the display screen up at an angle between 85° to 95°
2. Hold and rotate the display screen 180 degrees counterclockwise until the display clicks into place

NOTE

- Do not rotate the display screen if it has not been opened at the right angle (between 85° to 95°), otherwise, it could damage the hinge and cables inside the hinge.
- Do not close the display screen when it has not been clicked into place.
- Do not slam the display screen when closing it.
- When using wireless communication in tablet mode, we suggest that no matter the computer is hold on hand or put on the desk, always keep the display screen upwards or forwards in order to get the best wireless communication quality.

Innovative "Prompt to Play" user's interface

Keyboard, cleverly arranged track point along with 2 sets of mouse buttons and touch panel make the computer prompting to play. Combining with the convertible display screen, your FlyBook computer can be used under almost all operational conditions, no matter what posture you are in--sitting, standing or walking.

When using the computer in notebook mode, all UIs can fully support your operation; when in tablet mode, touch panel can meet your operation requirement.

When using the computer in notebook mode, all UIs can fully support your operation; when in tablet mode, touch panel can meet your operation requirement.



Multimedia

With high-performance audio and display system inside, the computer possesses a rich multimedia power. Through the built-in high-quality display, stereo speakers and microphone, the computer can play audio and video alone well. Besides, the rich multimedia can be input from and output to external devices through the external display port, video out port, earphone jack and microphone jack. These will be convenient for you to use the computer in different conditions.

Display to a VGA display device

The external display port is a standard D-sub 15 port. Through the port, you can output the computer's display to an external VGA display device, such as VGA monitor and digital projector.

It is very useful for you to output the display on a larger display device in some application conditions, such as meeting or presentation.

Display to a video display device

Through the video out port, you can output the computer's display to a video display device, such as TV. The port can support either NTSC or PAL standard. Basically, what standard the port will support depends on where (the country) you buy the computer (The adoption of video signal standard is always different from country to country.). Please see the specification of your FlyBook computer.

Sound or voice to an earphone or speakers

Through the earphone jack, the computer's sound and voice can be output to connected earphone or speakers.

Sound or voice from an external microphone

You can connect a microphone to the microphone jack. The microphone inputs sound or voice into the computer.

Connectivity

Your FlyBook computer will offer you an excellent experience in its connectivity. All of the connections can be made quickly and easily through your options.

Fast data link

USB link

The USB ports allows you to connect or daisy-chain the computer with USB peripheral devices, such as keyboards, mouse, disk drivers, CD-ROM drivers, digital cameras and so on. USB 2.0 transfers data at up to 480Mbps and is backward-compatible with USB 1.1 devices, which transfer data at up to 12Mbps.

Two high-speed standard USB ports (USB 2.0) are available in your computer.

IEEE 1394 link

IEEE1394 is another kind of high-speed I/O standard. Through 1394 ports, you can connect or chain the computer with 1394 supported devices, such as computers, disk drivers, CD-ROM drivers and so on. The port can transfer data at up to 400Mbps.

Two 4-pin 1394 ports are available in your computer.

Ethernet (RJ-45) link

Through the Ethernet port (RJ-45 jack), the computer can be connected to an Ethernet or fast Ethernet (10/100 Base-TX) based network to access resources on or over the network.

Chapter 1

Chapter 2

Chapter 3

Chapter 4

Chapter 5

Appendix

Wireless network connection

The wireless network connection feature is built-in for all models. Depending on the models your computer can communicate with other wireless-equipped devices via 802.11b protocol.

Bluetooth communication

Available on select models, the Bluetooth communication feature allows your computer to inter-connect with varied types of Bluetooth-equipped devices via Bluetooth protocol.

GPRS communication

The GPRS communication feature is also available on select models. You can access Internet resources via a built-in GPRS module (only one can be selected to build in the computer). Both modules are also capable of voice communication.

MODEM (RJ-11) Telephone link

The computer comes with a built-in V.90 56K fax/data MODEM module. You can connect a phone line from the MODEM port to a telephone jack to make a dial-up link.

PC card connection

The PC card slot can accept any CardBus type I and type II data card and device card, including memory card, CF disk, MODEM card, wireless LAN card, and so on.

Chapter 3
Starting the computer

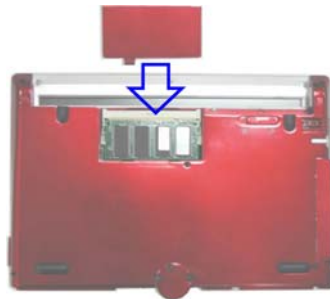
Ready your computer

After knowing your FlyBook computer, the first thing you need to do is making it ready for use. Let us show you how to finish the job.

NOTE Do not connect the AC-to-DC adapter to supply your computer with power when it is not ready for use.

Installing CMOS battery and DRAM module

1. Open the DRAM cover beneath the bottom of your computer.
2. Insert the CMOS Battery (Model# CR1220) into the battery holder.
3. Insert the DRAM module into the S.O. DIMM socket.
4. Put the DRAM cover back.



NOTE Only DDR DRAM module can be applied to the computer and it is important that you must choose one of what we suggest as listed in Appendix B, otherwise, we could not guarantee your computer can work properly.

It is no need to take this step if the FlyBook you bought is in a complete unit.

Installing hard disk

1. Take out the hard disk cover in the right side of your computer.
2. Fix hard disk on the cover with 2 screws to form a hard disk pack.
3. Insert the hard disk pack into the hard disk bay until it is in right place.
4. Fix the hard disk pack on the PCB with 1 screw from the position under keyboard.



NOTE Do not connect the AC-to-DC adapter to supply your computer with power when it is not ready for use.

Chapter 1

Chapter 2

Chapter 3

Chapter 4

Chapter 5

Appendix

Installing battery pack

1. Insert the battery pack into the battery bay until it is in right place.



2. Latch the battery pack.



Turning on the power

To start your FlyBook computer is very easy. Just follows the steps below:

1. If possible, connect AC power source to supply the computer with power (Connect one end of the AC-to-DC adapter to the power outlet and the other end to the power jack on the computer).



NOTE If it is the first time you start the computer, please connect an AC power source to supply the computer with power.

2. Hold the left and right front sides of display screen cover with your hands, and then open it to a feasible view angle.



3. Press the power button (on the left side of the computer) to turn on the power.



Installing operation system

Windows XP home edition is already installed in your computer. No more effort is required to install the operation system. The computer will automatically boot into Windows after turning on the power.


Chapter 4
Using the computer








In this chapter, you will learn how to use your FlyBook computer and customize the computer as your own.

Indicators

The computer has several LEDs that show the status of key parts or sub-systems.



Item	Description
<p>1</p> <p> Power</p>	<p>Steady On: there is power to your Flybook and that it is ready for use</p> <p>Flashing: Your system is in Suspend to RAM mode</p> <p>Steady Off: Your system is either in Save to Disk mode, or that it has been turned off</p>

Item	Description
2  Battery	Steady On & battery-in: the battery offered the power to the system when AC-out and the battery is full when AC-in Steady Off & battery-out: the system be force to power off when AC-out and it is powered when AC-in Flashing & battery-in: the battery is charging
3  Hard Drive	Lights when your internal hard drive is being accessed
4  Wireless Network	Lights when module is powered
5  GPRS/CDMA	Lights when module is powered
6  Bluetooth	Lights when module is powered
7  Caps Lock	Lights when the keyboard is set to type in all capital letters mode
8  Num Lock	Lights when the integral keyboard is set in ten-key numeric keypad mode

- Chapter 1
- Chapter 2
- Chapter 3
- Chapter 4**
- Chapter 5
- Appendix

Keyboard

The computer's keyboard is an 80-key mini-size keyboard, but it covers all functions of Windows enhanced keyboard. Besides, some hot keys are available for system control and they are specific keys of FlyBook computer.











All special function keys can be classified into 3 categories and listed as follows.

Windows keys

The Windows keys perform Windows specific functions.



Key	Description
Windows 	Launches Windows "Start" menu.
 + Tab	Acts as Windows next taskbar button.
 + E	Launches Windows "My Computer" task.
 + F	Launches Windows "Find" program.
 + M	Minimizes all tasks into taskbar.
Shift +  + M	Undoes minimize all tasks into taskbar.
 + R	Launches Windows "Run" program.
Application key 	Opens a context menu, same as a right click button of mouse.

Lock keys

There are 3 lock keys on the keyboard. You can press the keys to toggle function on and off.



Key	Description
Caps lock	When Caps lock is on, all alphabetic characters typed are uppercase.
Fn + NumLK	When Number lock is on, the numeric keypad will be functional.
Fn + ScrLK	When Scroll lock is on, the screen will scroll one line up and down while pressing arrow keys up and down respectively. It will not function on some applications.



< Numeric keypad >

Chapter 1

Chapter 2

Chapter 3

Chapter 4

Chapter 5

Appendix

Hot keys

The hot keys are specific keys for system control. You can press the keys to toggle function on and off.



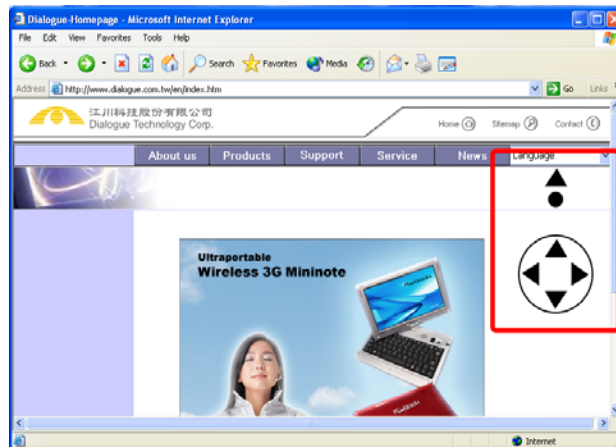
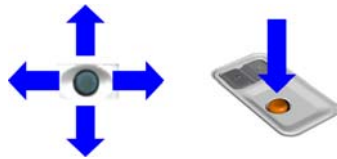
Key	Description
Fn + Esc	Turns on and off the light of mouse and panning keys
Fn + ~	Turns on and off the power of GPRS or CDMA module.
Fn + F1	Decreases screen brightness.
Fn + F2	Increases screen brightness.
Fn + F3	Sleep button.
Fn + F4	Power button.
Fn + F5	Decreases speaker volume.
Fn + F6	Increases speaker volume.
Fn + F7	Mutes the speaker.
Fn + F8	Turns on and off the power of Wireless LAN module.
Fn + F9	Turns on and off the power of Bluetooth module.
Fn + F10	Switches the display output to the LCD display screen, an external display device or both.

Track points, mouse buttons, and Pan button



Track point along with Two sets of mouse buttons are available on your computer. The track point combining with any left and right mouse buttons can offer the same function as 2-button mouse.

The track point is a capacitive point device. It is still but senses the force you impose on. When you put force on the top of point with your fingertip, the mouse cursor will move. The direction and speed of cursor move depends on the direction you push and the force you impose on respectively. Besides, you can double-click on the point to invoke events just like double-clicking on the mouse left button.



Chapter 1

Chapter 2

Chapter 3

Chapter 4

Chapter 5

Appendix

As to the Pan button, it is a switch of panning function. You can press the button to toggle panning on and off. When panning is on, the track point will act as a panning device to offer panning function.

The panning function can help you viewing a document's content that is over one screen page quickly and easily. It is just like using a mouse to operate the Windows scroll bar to view the document content. When the mouse cursor is focused on a document, force the track point forwards and backwards will scroll the document content upwards and downwards respectively; and force the track point left and right will scroll the document content left and right respectively.

Touch Panel

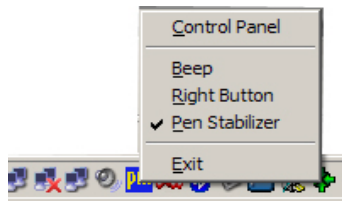
A touch panel is an input device that allows the users to operate a computer by simply touching the display screen.

The touch panel embedded in your computer is a pressure sensitive, palm-rejection type. You can use the stylus pen along with your computer as a point device to operate the computer. The stylus pen can act as a 2-button mouse. You can use it to write, to draw, to select, and to navigate any tasks displayed on the screen. The following is a brief introduction of touch panel operation:



- Touching on the display screen will move mouse cursor to the point touched.
- When touching on any icons or items shown on the display screen, the touched icon or item will get a focus (be selected).

-
- Single or double touching on a task icon or item, the relative tasks of the icon or item will be invoked.
 - The event of drag is same as that using a mouse.
 - When the mouse right button mode is on (Touching on PenMount icon in the system tray and then set "Right Button" checked), touching on the display screen is just like clicking the mouse right button on the place touched.



NOTE To clean the touch panel, please use any non-ammonia glass cleaner. Spray some cleaner on the cloth or towel and then wipe the surface of panel softly.

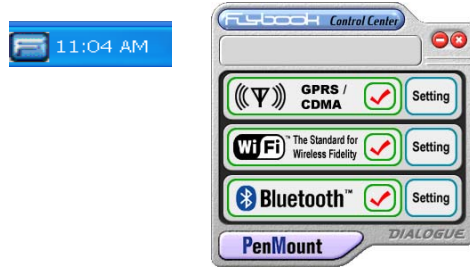
Calibrating your touch panel

To calibrate the touch panel is to adjust the cursor position on the screen relative to the pen tip position. The calibration is required due to the following situations:

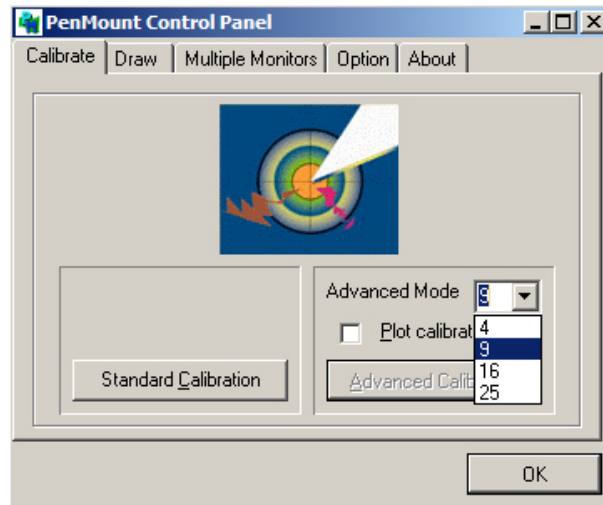
- The touch panel is being used for the first time.
- The cursor position does not correctly match the pen tip position and that might result in some mistakes or unpredictable errors in your operation.
- The system image has been restored.

Please follow the steps below to calibrate your touch panel:

1. Double click on "FlyBook Control Center "icon in system tray. The FlyBook Control Center window appears.



2. Click on "PenMount" to start the calibration software program.
3. Click on "Calibrate" tab. The PenMount Control Center window appears.
4. Click on [Standard Calibration] or select 4,9,15 or 25 points calibration in advanced Mode.



Display

The computer outputs the display on an 8.9" LTPS TFT LCD screen. The screen offers you a delicate true color (32-bit color), wide-XVGA (1024 x 600 resolution) display quality. Besides,

- The display system offers you OSD (On Screen Display) function to display the settings of some hot keys while pressing the keys. For example, when you press Fn + F1 (Increases screen brightness), the screen will display:



- The display output can be switched to an external display device.
- The display color, resolution and orientation can be changed.

Adjusting display brightness

You can use hot keys to increase and decrease the display brightness. Please see **Keyboard** section.

Switching display output to an external display device

Also use hot keys to switch the display output to a VGA display device or video display device after making a connection. Please see **Keyboard** section.

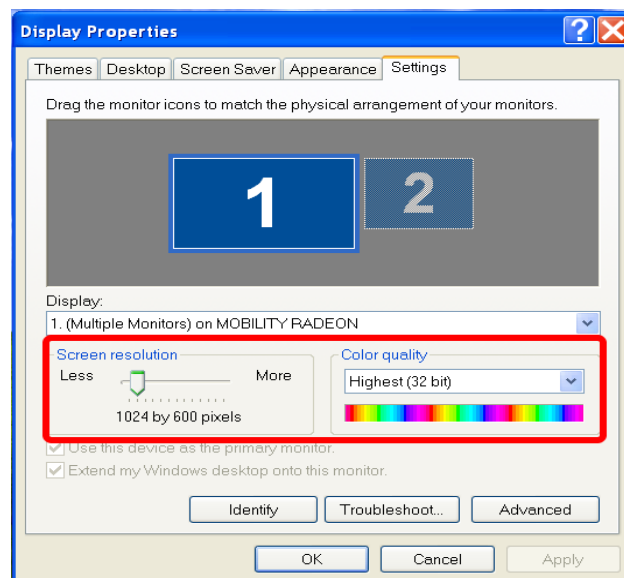


Setting display color and resolution

The display color and resolution can be changed through **Display Properties** of Windows.

1. Right click on desktop and then click on [Properties] to invoke **Display Properties** window.
2. Click on **Settings** tab and then select resolution and color you prefer.
3. The display color and resolution will change after clicking on **Ok** to close the window.

Please refer to Windows XP user's manual to see the detail.



Changing display orientation

The display output can be oriented to landscape or portrait mode. Click on an icon in system tray to start the utility. You can also apply ATI icon on system tray to do the same thing faster.

Audio

The computer has a high-performance stereo audio system (18-bit ADC and 20-bit DAC resolution), a built-in sensitive microphone and 2 stereo speakers.

- You can tune or mute the output volume in an audio application, but the maximal output volume is controlled by the audio system.
- You can turn on and turn off the output of audio system, and increase or decrease the output volume through the hot keys. Please see **Keyboard** section.



Besides, the audio input or output will automatically switch to external audio devices (earphone, speaker or microphone) once the devices are connected to the computer.



Power system

The power system includes FlyBook's AC-to-DC adapter and battery. Through the adapter, an AC power source directly supplies the computer with power and charges the battery as well. The battery supplies the computer with power once the adapter is disconnected from AC power source.

The computer controls power activities through an ACPI power management unit. The unit maximizes power conservation and optimizes system performance at the same time, and works closely with Windows. Windows takes charge of all power-saving affairs for the computer.

AC-to-DC adapter

The adapter could connect with most of AC power sources, but make sure the following 2 things before connecting the adapter to a power source:

- The voltage and frequency of AC power source can steadily meet the input specification of adapter.
- The power cord can connect to the power outlet properly.

Otherwise, do not make the connection.

If the adapter properly connects with a power source, the LED indicator on the adapter will light green.

Battery

With 3 2200mAH high-capacity Li-ion battery cells inside, the battery pack could keep the computer working for hours depending on applications, if fully charged.

NOTE If the computer is being used for the first time, the battery pack must be fully charged.

Calibrate the battery

Periodically calibrating the battery pack could prolong battery life. It's better for you to calibrate the battery pack every 2 or 3 months. The **System Recovery Utility** provides a battery calibration utility. Please see **System Recovery Utility Reference Guide**.

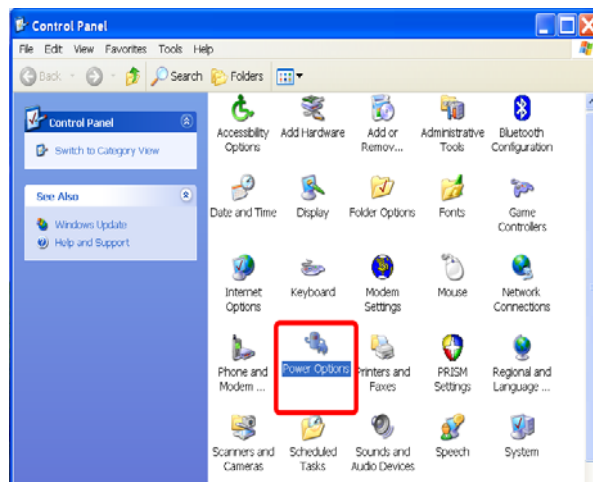
Power management

The power management unit monitors the power status all the time and employs a set of power management schemes to maximize the power conservation. It also allows you to customize part of the schemes as your own.

The computer offers you a system utility, the **Power Options**, to change the adjustable parameters of power management schemes and check the power status.

To start **Power Options**, please:

1. Click on [Start menu][Settings][Control panel] to explore **Control panel**.
2. Double click on [Power Options] in **Control panel** window.
3. When **Power Options** window appears, check status or change settings under the tabs.

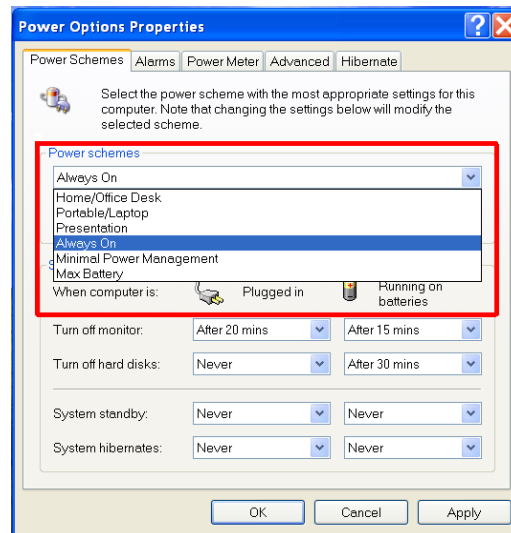


Under Power Schemes tab

Selecting a feasible running mode

Select a computer's running mode in **Power Schemes** selection box. The running mode is one of the major schemes of power management unit that automatically optimizes the computer's performance and minimizes the computer's power consumption. 6 different modes are available for you. You can choose a feasible one for your computer.

- **Home/Office Desk:** The CPU will run in full-speed mode when an adapter is connected to supply the computer with power.
-



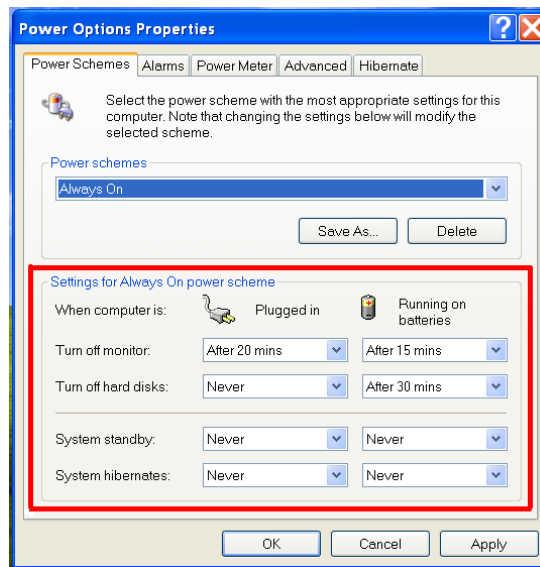
- **Portable/Laptop:** The CPU's running speed depends on the computer's loading.
- **Presentation:** The display screen will be always on and the CPU will run in power-saving mode.
- **Always On:** The computer's CPU will always run in full-speed mode
- **Minimal Power Management:** The CPU's speed also depends on the computer's loading.

- **Max Battery:** The CPU will run in power-saving mode when the battery pack supplies the computer with power.

Setting time for the automatic execution event of built-in power-saving schemes

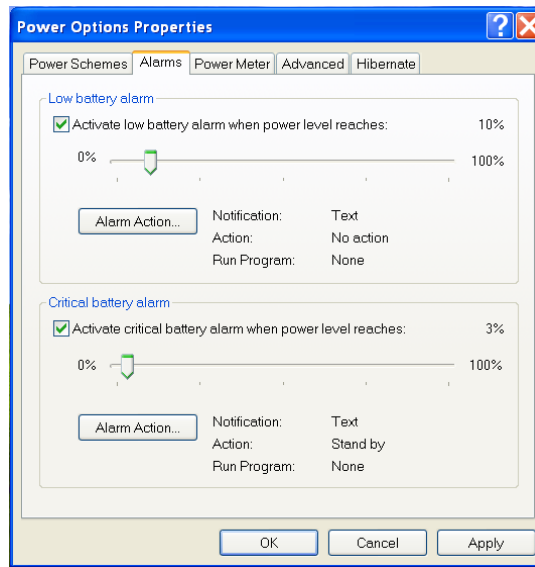
4 built-in power-saving schemes, Turn off monitor, Turn off hard disks, System standby and System hibernates, allow you to set time for their automatic execution events.

Set time for 2 kinds of power-supplying mode each.



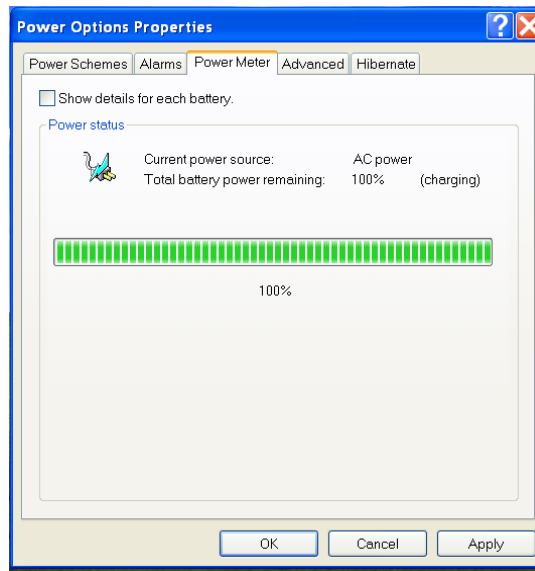
Under Alarms tab

Allows you to activate the low and critical battery alarm events and decide when and how the computer alarms you.



Under Power Meter tab

To show you power-supplying mode and power status of the battery pack.



Chapter 1

Chapter 2

Chapter 3

Chapter 4

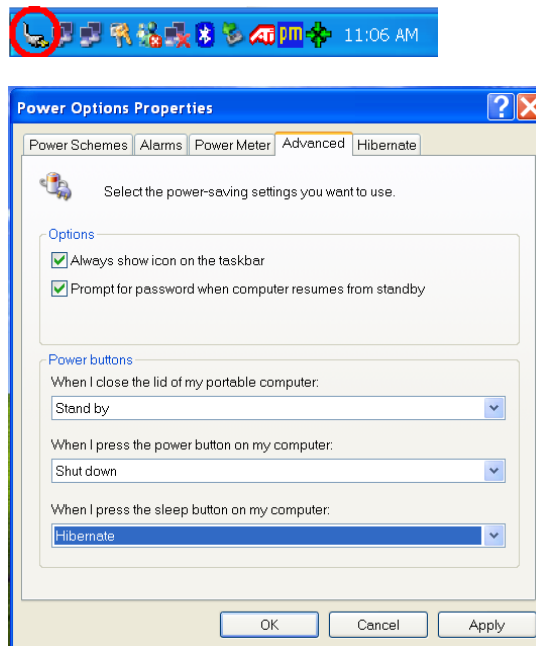
Chapter 5

Appendix

Under Advanced tab

Setting "Always show icon on the taskbar" checked

A **Power Options** icon will show on the taskbar and you can directly double click on the icon to invoke a **Power Options Properties** window.



Setting "Prompt for password when computer resumes from standby" checked

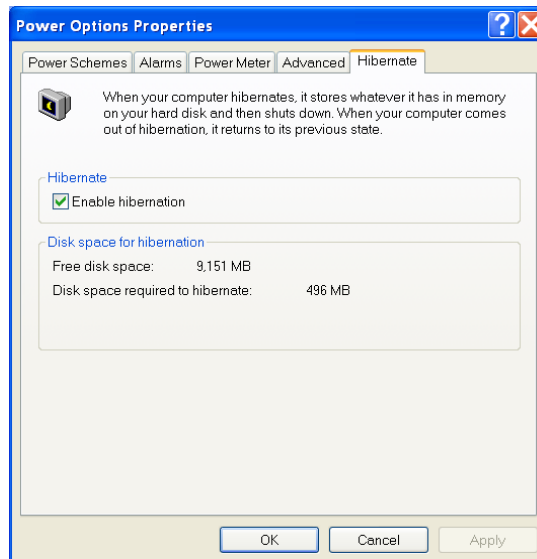
You must input your login password when the computer is resumed from standby.

Under Hibernate tab

Shows you the information of free disk space and disk space required to hibernate.

If free space is not enough for the required space, any events with the hibernation scheme cannot be activated to execute.

Besides, if "Enable hibernate" is not set checked, the hibernation scheme cannot be set on.



Chapter 1

Chapter 2

Chapter 3

Chapter 4

Chapter 5

Appendix

Securing your computer

To secure your computer against unauthorized access and damage is very important. Let us show you how to do.

Securing your computer against unauthorized access

Your computer provides 3 password types, different levels of protection to secure your computer system and data against unauthorized access.

BIOS password

The BIOS password can effectively protect your computer from unauthorized boot and unauthorized access to the BIOS setup utility. Once the password is set, you must enter the password in the beginning of boot procedure. Please refer to **BIOS Setup Utility Reference Guide**.

NOTE If you forget the BIOS password, please contact service centers or authorized resellers to get help.

Hard disk password

The hard disk password can prevent unauthorized access to your hard disk. Once the password is set, you must enter the password after BIOS test in the boot procedure. Please refer to **BIOS Setup Utility Reference Guide** to see how to set your hard disk password.

NOTE If you forget the hard disk password, please also contact service centers or authorized resellers to get help.

Operation system passwords

Using operation system password to prevent unauthorized access is very common and effective. Windows XP allows you to create several sets of user name and password for different users. Please refer to **Windows XP user's manual** to see how to create user's account and login.

Securing your computer against damage

Reserving backups of your personal data frequently

To secure your computer against damage, the first thing you need to do is reserving backups of your personal data frequently. Several different ways reach it:

- Backup your data to the secondary logical disk driver (D driver)
- Backup your data to a CF card or USB CF disk.
- Backup your data to a recordable compact disk through a connected USB or 1394 CD-RAM driver.
- Backup your data to a connected USB or 1394 hard disk driver.
- Backup your data to servers or computers that you have right to access in your network.

Using a strap to prevent drop

The strap hole, in the right side of your computer, is a special mechanism to prevent a possible drop. Especially, while the computer is used in tablet mode, you can tie the computer with a strap, and then seize the strap on your hand when you hold the computer.

Chapter 1

Chapter 2

Chapter 3

Chapter 4

Chapter 5

Appendix

Recovering your system

If unfortunately the operation system of your computer is crashed, you can quickly and easily recover it from:

- A hidden partition of built-in hard disk that has stored a pre-installed image of your operation system.
- The recovery CDs that also has stored a pre-installed image of your operation system.

From a hidden partition of built-in hard disk

A copy of pre-installed image is stored in a hidden partition of your hard disk. It is convenient for you to recover your system without extra effort.

Please refer to **System Recovery Utility Reference Guide**.

From the system recovery CDs

Please refer to **System Recovery Utility Reference Guide**.

NOTE In addition to booting from the internal hard disk, the computer only supports an external boot from the CD-ROM.

Resetting the computer

Once the computer system cannot be shut down properly, reset your computer. Use a needle or something shaped like one to poke the reset switch to restart the computer.

Connection through options

Ports and built-in wireless modules allow you to make connections through your options.

USB link

You can connect or daisy-chain your USB peripheral devices to either USB port. Windows supports "plug-and-play" for the USB links.

- For the device that has driver already installed in the computer, just connect the device to the computer. The connected device will be automatically linked and you can access it and other daisy-chained devices.
- For the devices that do not have driver installed, the computer will guide you to install the driver that comes with the device.

NOTE When removing an USB storage device that is connected to your computer, do not forget to stop the connection before removing it. To stop the connection, please:

- Double click on the icon of the Safely Remove Hardware shown on the taskbar.
 - When a "Safely Remove Hardware" window appears, click on "stop" to stop the connection.
-

IEEE 1394 link

You can connect or chain your 1394 supported devices to either 1394 port. Windows also supports "plug-and-play" for the 1394 links. If the device driver of connected device is already installed in your computer, the connection is made automatically. You can access it and other chained devices. Otherwise, the computer will guide you to install the driver that comes with the device.

Ethernet link

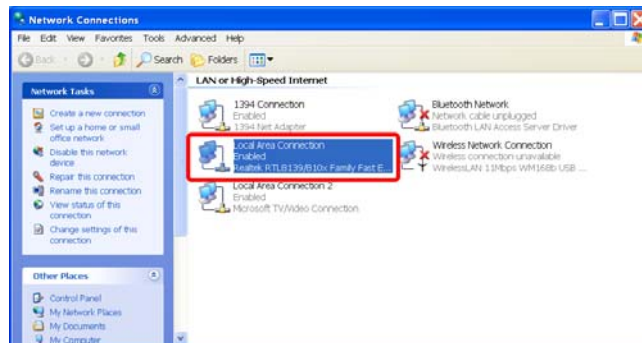
Connect a 10 Base-T Ethernet cable from the Ethernet port to a network jack or hub in your network first.



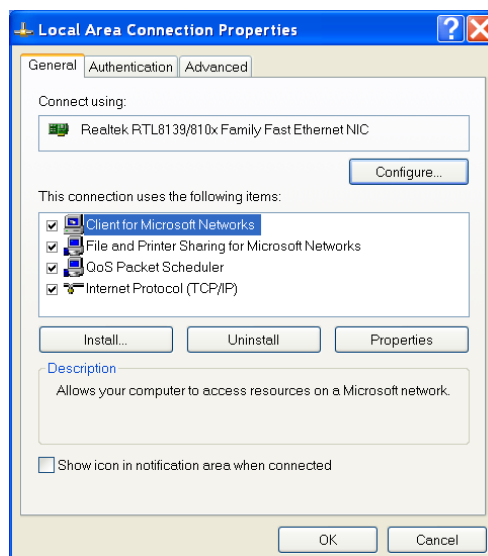
Configuring your connection

If it is the first time you connect the computer to an Ethernet, please follow the steps below to configure your connection:

1. Click on [Start menu][Settings][Control panel] to explore **Control Panel**.
2. Double click on [Network Connections] icon in **Control panel** window. A **Network Connections** window appears.



3. Double click on [Local Area Connection]. A **Local Area Connection Properties** window appears.



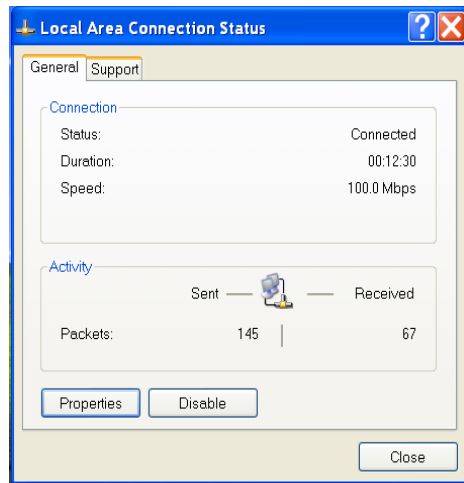
4. Click on [General] tab and refer to **Windows XP user's manual** to complete the TCP/IP configuration under this tab.

Making connection to an Ethernet

If the connection setting configured fits in with the network you wish to link, the link will be self-acting and the services provided to the network members will be activated once the cable is connected.

You can double click on [Local Area Connection] icon in **Network Connections** window again. A **Local Area Connection Status** window will be invoked for you this time. In **Local Area Connection Status** window, you can:

- Check connection status.
- Disable and enable the connection
- Click on [Properties] to invoke **Local Area Connection Properties** window again to change the connection setting.



NOTE You can set "Shows icon in notification area when connected" checked in Local Area Connection Properties window. An Local Area Connection Status icon will show on the taskbar, and you can directly click on the icon to invoke the Local Area Connection Status window.



Wireless communications through the built-in modules

CAUTION Using wireless devices in the aircraft is prohibited. Make sure all your wireless modules are off while you are using FlyBook at anytime during your flight.

NOTE For better signal quality and management, we recommend not to use GPRS/BT/W-LAN at the same time.

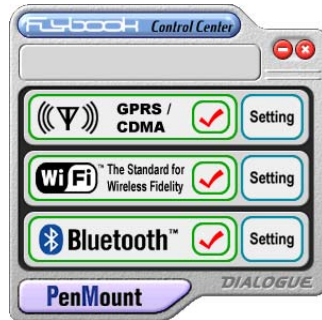
To start wireless communications through the built-in modules, you must turn on the power of the modules first and then make connections through the communication software programs.

You can use hot keys or **FlyBook Control Center** to turn on and off the power of modules.

To use hot keys, please see **Keyboard** section.

The following steps guide you to turn on and off the power through **FlyBook Control Center**:

1. Double click on [FlyBook Control Center] icon in system tray. A **FlyBook Control Center** window appears.
2. Click on module's name or icon to turn on (set checked) and off (set unchecked) the power of a module.

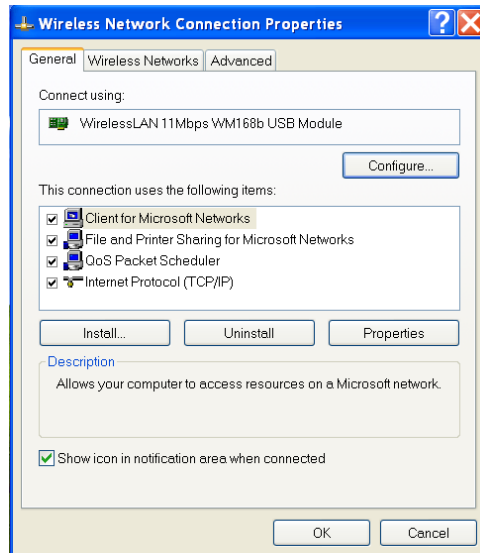
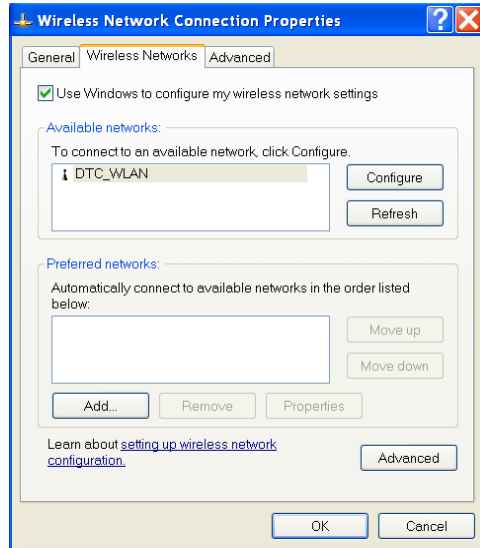


Wireless Network Connection

Although a peer-to-peer connection is allowed for the computer, for the most part, the computer communicates with an access-point to access resource on or over a wireless network.

Configuring your connections

1. Click on [Setting] icon in **FlyBook Control Center** window or double click on [Wireless Network Connection] icon in **Network Connections** window. A **Wireless Network Connection Properties** window appears.
2. Click on [Wireless Networks] tab. You can seek networks, configure the settings for the networks you wish to link and add them to the **Preferred Networks** under this tab.
3. Click on [General] tab and refer to **Windows XP user's manual** to complete the TCP/IP configuration under this tab.



Chapter 1

Chapter 2

Chapter 3

Chapter 4

Chapter 5

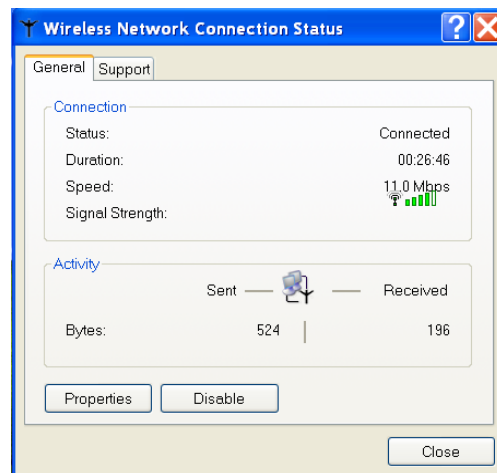
Appendix

Making connection to a Wireless Network

If the power of Wireless Network module is turned on, the computer will automatically seek the preferred networks listed in **Preferred Networks** and connect to the most preferred one found. The services provided to the network members will be activated once the computer is connected to the network.

You can double click on [Wireless Network Connection] icon in **Network Connections** window again. A **Wireless Network Connection Status** window will be invoked for you this time. In **Wireless Network Connection Status** window, you can:

- Check connection status.
- Disable and enable the connection.
- Click on [Properties] to invoke Wireless Network Connection Properties window again to change the connection settings.



Specifications

- Type of network: IEEE 802.11b (Wi-Fi based)
- Transfer rate: (Automatic switching)

-
- Active frequency: 2400~2473 MHz
 - Number of channels: 11
 - Security: Network name (SSID), Network key (64 bits/128 bits)
 - Maximum recommended number of computers to be connected over wireless LAN (during ad hoc connection):10 units or less

NOTE In Wireless Network Connection Properties window, you can set "Shows icon in notification area when connected" checked. A Wireless Network status icon will show on the taskbar, and you can directly click on the icon to invoke the Wireless Network Connection Status window.



Chapter 1

Chapter 2

Chapter 3

Chapter 4

Chapter 5

Appendix

Bluetooth communication (Optional)

When the power of Bluetooth module is turned on, the communication starts automatically. You can find a Bluetooth icon, which is blue in color with a white Bluetooth logo insert, in the system tray.

NOTE

- If the power of Bluetooth module is turned on, but the icon is blue in color with a red Bluetooth logo insert, the communication has not been started yet. Please right-click on the icon and select "Start the Bluetooth Device" to start the communication.

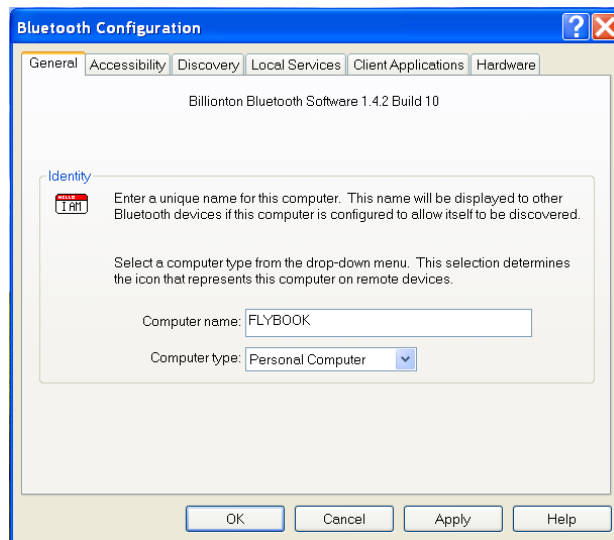


- To stop the communication, you can right-click on the icon again and select "Stop the Bluetooth Device". But it is better for you to turn off the power of the module (Through FlyBook Control Center) in order to conserve the power.
-

Configuring your connections

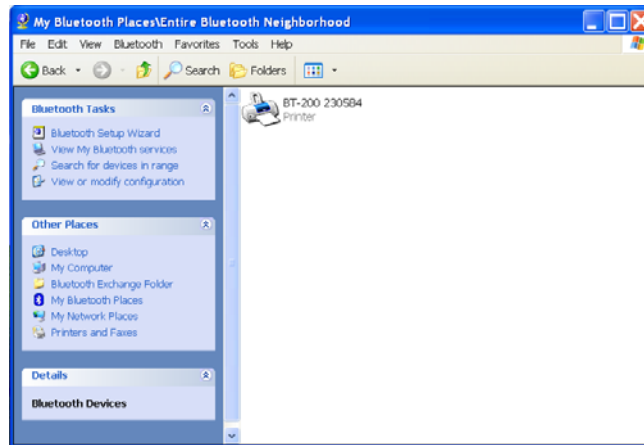
The computer connects to different types of Bluetooth-equipped devices via different types of Bluetooth service protocol. All of the connection settings are configured in **Bluetooth Configuration** window. You can right-click on the Bluetooth icon in system tray and then select [Advanced Configuration] to invoke **Bluetooth Configuration** window.

Please see **Bluetooth Application Note** in your Recovery CD to learn how to configure your connections.

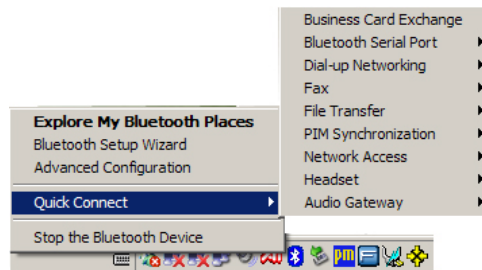


Making connections to Bluetooth-equipped devices

You can right-click on the Bluetooth icon in system tray and then select [Explore My Bluetooth Places] to explore **My Bluetooth Places**. Make connections to your Bluetooth-equipped devices in **My Bluetooth Places** window.



Or you can right-click on the Bluetooth icon in system tray and then select [Quick Connect][Service name] to explore a specific connection service. Make connections to the specific type of devices in the explored window.



Please also see **Bluetooth Application Note** in your Recovery CD to learn how to make connections to your Bluetooth-equipped devices.

GPRS communication (Optional)

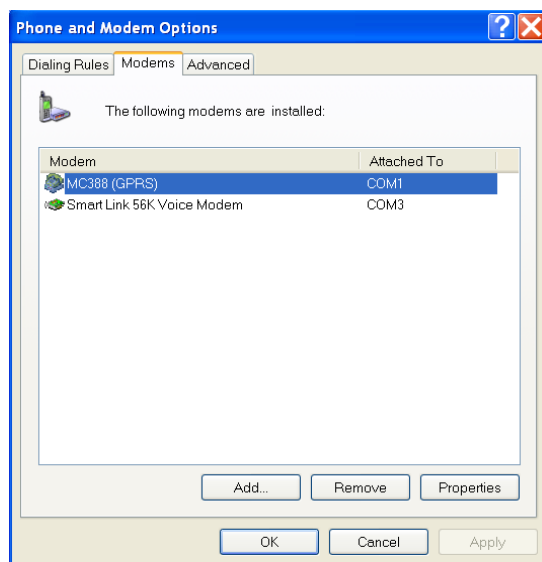
CAUTION For EMI reasons, The Wireless LAN and GPRS are exclusive.

If the GPRS module is available in your computer, first of all, you must apply for a GPRS account and get a SIM card from the network service provider before use. The SIM card is a key that allows you to connect the computer to a GPRS network. You can access Internet resource via the network.

Insert the SIM card into the SIM card slot before turning on the power of the module.

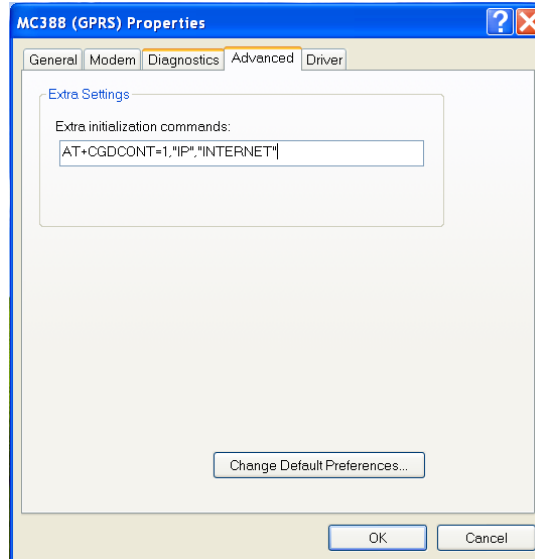
Configuring your connection

1. Click on [setting] of GPRS/CDMA in **FlyBook Control Center** window. A **Telephone and MODEM** window appears.



2. Select "MC388 (GPRS)" (or MC45) and then click on [Properties]. A **MC388 (or MC45) (GPRS) Properties** window appears.

3. Click on [Advanced] tab and then input an initialization command in the **Extra initialization commands** input box.
4. Click on [Ok] to close the window.

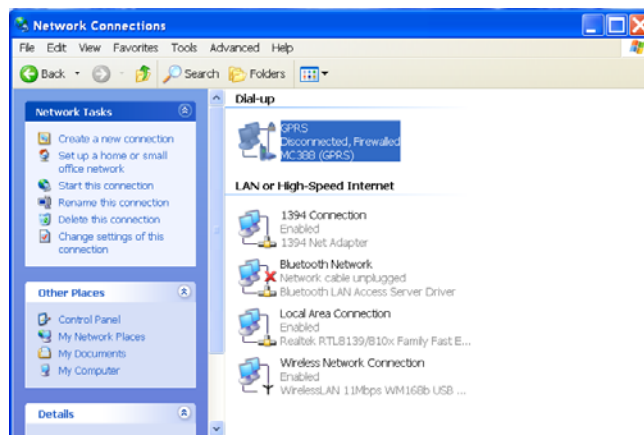


- NOTE**
- The MC388 MODEM is an optional device by your Flybook models.
 - The Extra initialization command is different from network to network. Get the command from your network service provider.
- In **Network Connections** window, run **Create a new connection** wizard to create a dial-up connection for GPRS. If completed, an entry will show in **Network Connections** window.

Making connection to a GPRS network

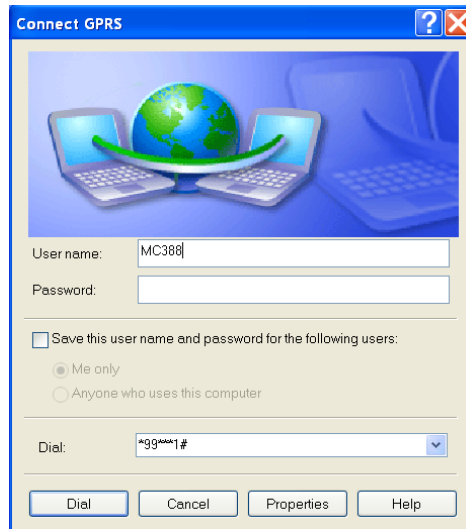
Please follow the steps below to make a GPRS link (If a dial-up connection, named GPRS, is created.):

1. Click on [GPRS] in **Network Connections** window. A **Connect to GPRS** dialogue box appears.



2. Input phone number in **Dial-up** input box, and then input the user name and password of your account.

3. Click on [Dial] to start the link.



If connected, click on [GPRS] again in **Network Connections** window. A connection status window appears this time. In the status window, you can:

- Check connection status.
- Stop the connection.

NOTE The phone number of dial-up also depends on GPRS network. Get the phone number from your network service provider.

Dial-up link through the built-in MODEM

Configuring your connection

In **Networks** window, run **Create a new connection** wizard to create a dial-up connection. If completed, a dial-up entry will show in **Networks** window.

Making a dial-up link

Please follow the steps below to make a dial-up link (If a dial-up connection, named Dial-up, is created.):

1. Connect a phone line from the MODEM port to a telephone jack.
2. Click on [Dial-up] in **Networks** window to invoke a **Dial-up Link** dialogue box.
3. Input dial-up phone number, user name and password of your account.
4. Click on [Dial] to start the connection.



If connected, click on [Dial-up] again in **Networks** window. A connection status window appears this time. In the status window, you can:

- Check connection status.
- Stop the connection.

PC card connection

Windows also supports "plug-and-play" for the PC card connection. If a card is inserted to the PC card slot and Windows cannot find the driver of the card, it will guide you to install a right one. For some device cards, specific application programs are required for the special applications. Please see the instructions of your cards.

PC card insertion

Insert a card to the PC card slot until it clicks into place.



PC card ejection

The ejection rod of the slot is push-push type. Push on the nob of the rod with your fingertip to eject the rod and then push the rod to eject the card.



Chapter 5
Troubleshooting

Under strict test, The Flybook is a sturdy product and you may encounter few problems when using your Flybook is relatively easy to identify and solve. However, you may require service from your network administrator or the manufacturer.

This information aims to help you isolate and resolve many straightforward problems by yourself. And it covers the problems you are most likely to encounter.

If you have tried the solution suggested and all else fails, contact Dialogue's support service with the URL address <http://www.dialogue.com.tw>.

How to identify the problem you encounter

1. Turn off your Flybook.
2. Make sure that the AC adapter is plugged in properly to your Flybook and to the AC power source is active.
3. For avoid a possible cause of failure, it is be suggested that to remove all of devices in the PC Card slot and connected to the external connectors such as USB or IEEE 1394.
4. Turn on your Flybook again when it has been off over ten seconds.
5. The Flybook enter the boot sequence.
6. If the problem has not been resolved, go through the troubleshooting tips as below and try the possible solution suggested.

Some typical problems when you turn on the computer

The Flybook does not start or boot-up

1. If the Power Indicator is not lit, no power is applied to Flybook. Make sure you attached the AC adapter and power cable properly or installed a charged battery.
2. If the Flybook is running on battery power which may be at battery low status and cannot to power up the Flybook or it is faulty.
3. If the Flybook is using the AC adapter, check the power source is active from the AC outlet, airplane seat jack or the car's cigarette lighter. Or the AC adapter is faulty.

The hard drive or the external boot-up device is not accessed

1. If the Hard Drive Indicator is lit, the BIOS setting is incorrectly set for your internal hard drive. To revise the BIOS setting for Primary Master correctly.(See BIOS Setup Utility Reference Guide for more information).
2. Security may be set so that your operation system cannot be started before entering a specific password.
3. If you choose to boot-up from the external device, USB or 1394, make sure it has been power-on and insert the media is bootable.

The screen appears nothing or does not look right

1. The Flybook is set for an CRT or TV only. Press Fn and F10 simultaneously that allows you to change your selection of where to send your screen.

2. The power management system automatically blanks the screen to save power. It has gone into video time-out, standby mode or hibernate mode. You can press any key, move the track-point/ mouse or push power button to turn the display back on.
3. The angle of the display and the brightness levels are not adequate for your lighting conditions. Move the display and press Fn+F1 or Fn+F2 to adjust brightness level until you have visibility.
4. The LCD display has a native resolution of 1024 x 600 (XVGA). If you set the resolution lower than this, the screen will expand to fill the display. It is not full screen on the LCD display or on an external monitor. You can right-click on Windows desktop and select Properties to invoke the Display Properties dialog box. Then click on the Settings tab to make sure that the resolution is set to appropriate resolution.

There is no audio coming from the built-in speakers

1. The volume or the software volume control is turned too low. You can use the volume control buttons to adjust the volume. Refer to Hot Keys section for more information. In Windows environment, You can also adjust the sound volume settings in your operation system and applications.
2. The volume may be muted. In Windows environment, click on the Volume icon on the task bar. If it is red crossed-out or the Mute box is checked, click on it to uncheck the Mute option.
3. The speakers may be turned off. Press Fn and F7 simultaneously to turn the speakers on. Refer to Hot Keys section for more information.
4. If earphones, headphones or external speakers are plugged into the line-out port, the built-in speakers were disabled automatically.

The keyboard or track-point/mouse does not work properly

1. It maybe the system has gone into Suspend To RAM mode. You can push the Power button to resume the system.
2. It maybe the application has locked out your input device. You must try to restart your system.
3. If the keyboard or mouse does not respond on USB or IEEE 1394, to make sure that it is installed properly and the correct software driver for that device is setup.

The PC Card does not seem to work properly

1. The card is not properly installed. Try to remove and re-insert the card.
2. Your system may not have the correct software driver for the card. Try to re-install the correct driver.
3. The card may have been installed while the system is busy so that it is not aware of this installation. Try to close all of applications and restart your system.

The Modem does not receive or transmit properly

1. Make sure the telephone line is firmly connected to the telephone line jack (RJ-11) and it has a dial tone.
2. Check the port settings and the communications parameters (baud rate, parity, data length and stop bits) specified in the communications program.

The GPRS/CDMA module does not work properly

1. Make sure the GPRS/CDMA module is available in your Flybook. You have apply for a GPRS/CDMA account and get a SIM card from the network service provider.
2. Make sure the SIM card be inserted into the SIM card slot properly.
3. Make sure the correct software driver be installed and an initialization command be input in the **Extra initialization commands** input box.

The Wireless LAN is unavailable network connection

1. The possible cause of incorrect network name(SSID) or network key. Make sure you have set the network name(SSID) and network key to the same values as the access point (infrastructure connection) or as the computers to be connected with (Ad Hoc connection).
2. The Flybook be put in poor radio wave condition. You can retry connection after shortening the distance to the computers to be connected with (Ad Hoc connection) or to the access point (infrastructure connection). And You can check the wave condition in **Wireless Network Connection Status** window.
3. Check if the power of wireless LAN is turned on. To verify **Disable Radio** is not checked in **Network setting** window.
4. Make sure you have a right of access or Network authentication to the network to be connected with.
5. You can change channels to avoid active channel duplication.
6. Check the setting of the protocol, work group, shared setting and IP address.

The touch panel does not work properly

1. If the cursor position does not correctly match the pen tip position or the first time use the touch, you must calibrate it. Please refer to **Calibration your touch panel** section.
2. Make sure the touch is not pressed by something.

The battery can not charge or work time too short

1. Verify the battery is properly installed and is not too hot or too cold.
2. Try to run the **Battery Calibration** utility. Please refer to **System Recovery Utility Reference Guide**.
3. The installed battery is dead or faulty. You must purchase one and replace it.

Chapter 1

Chapter 2

Chapter 3

Chapter 4

Chapter 5

Appendix

FLYBOOK

Appendix

Appendix

Appendix A Flybook Models

The following table shows FlyBook models. They differ from CPU, DRAM and wireless options.

Model	CPU	DDR RAM	Wireless LAN	GPRS	Blue Tooth
A33iS	TM5800 1GHz	256MB	11b	None	Optional
A33iG	TM5800 1GHz	256MB	11b	GPRS	Optional
A33iG-tri	TM5800 1GHz	256MB	11b	GPRS Tri-Band	Optional

Appendix B Power On Self Test

Chapter 1

The following is a list of error-and-status messages that Phoenix BIOS and/or your operating system can generate.

- Extended RAM Failed at offset: nnnn

Extended memory not working or not configured properly.If you have an installed memory upgrade module,verify that the module is properly installed. If it is properly installed, you may want to check your Windows Setup to be sure it is not using unavailable memory.

- nnnn Extended RAM Passed

Where nnnn is the amount of memory in kilobytes successfully tested.

- Failing Bits: nnnn The hex number nnnn

This is a map of the bits at the memory address (in System, Extended, or Shadow memory) which failed the memory test. Each 1 (one) in the map indicates a failed bit. This is a serious fault that may cause you to lose data if you continue.

- Fixed Disk 0 Failure or Fixed Disk Controller

The fixed disk is not working or not configured properly. This may mean that the hard drive type identified in your setup utility does not agree with the type detected by the Power On Self Test. Run the setup utility to check for the hard drive type settings and correct them if necessary. If the settings are OK and the message appears when you restart the system, there may be a serious fault which might cause you to lose data if you continue.

- Invalid NVRAM media type

Problem with NVRAM access. In the unlikely case that you see this message you may have some display problems.You can continue operating but should contact your support representative for more information.

- Keyboard controller error

Chapter 2

Chapter 3

Chapter 4

Chapter 5

Appendix

The keyboard controller test failed. You may have to replace your keyboard or keyboard controller but may be able to use an external keyboard.

- Keyboard error

Keyboard not working. You may have to replace your keyboard or keyboard controller but may be able to use an external keyboard.

- Keyboard error nn

BIOS discovered a stuck key and displays the scan code for the stuck key. You may have to replace your keyboard but may be able to use an external keyboard.

- Monitor type does not match CMOS - Run SETUP

Monitor type not correctly identified in Setup. This error probably means your BIOS is corrupted, run the setup utility and set all settings to the default conditions.

- Operating system not found

Operating system cannot be located on either drive C or CD-ROM. Enter the setup utility and see if both the fixed disk and CD-ROM are properly identified and that the boot sequence is set correctly. Unless you have changed your installation greatly, the operating system should be on drive C. If the setup utility is correctly set, your hard drive may be corrupted.

- Parity Check 1 nnnn

Parity error found in the system bus. BIOS attempts to locate the address and display it on the screen. If it cannot locate the address, it displays ????. This is a potentially data destroying failure.

- Parity Check 2 nnnn

Parity error found in the I/O bus. BIOS attempts to locate the address and display it on the screen. If it cannot locate the address, it displays ????. This is a potentially data-destroying failure.

- Press <F1> to resume, <F2> to SETUP

Displayed after any recoverable error message. Press the [F1] key to continue the boot process or the [F2] key to enter Setup and change any settings.

- Previous boot incomplete - Default configuration used

Previous Power On Self Test did not complete successfully. The Power On Self Test will load default values and offer to run Setup. If the previous failure was caused by incorrect values and they are not corrected, the next boot will likely fail also. If using the default settings does not allow you to complete a successful boot sequence, you should turn off the power.

- Real time clock error

Real-time clock fails BIOS test. May require board repair.

- System battery is dead - Replace and run SETUP

The BIOS CMOS RAM memory hold up battery is dead. This is part of your BIOS and is a board mounted battery. You can continue operating but you will have to use setup utility default values or reconfigure your setup utility every time you turn off your computer. The battery has an expected life of 2 to 3 years.

- System RAM Failed at offset: nnnn

System memory failed at offset nnnn of in the 64k block at which the error was detected. This means that there is a fault in your built-in memory. If you continue to operate, you risk corrupting your data.

- nnnn System RAM Passed

Where nnnn is the amount of system memory in kilobytes successfully tested.

- System timer error

The timer test failed. The main clock that operates the computer is faulty. Requires repair of system board.

- UMB upper limit segment address: nnnn

Displays the address of the upper limit of Upper Memory Blocks, indicating released segments of the BIOS memory which may be reclaimed by a virtual memory manager.

Appendix C Tested Devices

DDR RAM Modules

- A-DATA 256M (A-DATA)
- Kingmax 256M (Kingmax)
- Transcend 256M (Samsung)

PCMCIA/CF/CardBus

- IBM MicroDrive
- Lucent Orinoco WLAN
- Socket LP-E 10/100 LAN
- Pretec 56K compact Modem
- Buffalo AirStation WLI-CF-S11G
- Asus wireless WL-100 PCMCIA 802.11b card

USB

- SanDisk cruzer 128M
- Logitech QuickCAM Express
- Billionton USB 2.0 card reader
- Cypress USB 2.0
- Logitech Wheel mouse
- Aten VH-107 7 ports USB hub
- Fujitsu card reader
- Zippy WK-712 USB keyboard+USB hub

-
- Wintek WK-360 USB keyboard
 - External enclosure
 - Juster SP-16050 USB speaker (Philips DSS 330 speaker)
 - Mitsumi D35GUE USB floppy
 - Beckin USB mouse
 - Intopic USB mouse
 - Billionton Bluetooth
 - WLAN PRISM3 IEEE 802.11b
 - Sony MicroVault USB drive 64MB

IEEE 1394

- Prolific PL3507 Combo device

Chapter 1

Chapter 2

Chapter 3

Chapter 4

Chapter 5

Appendix